

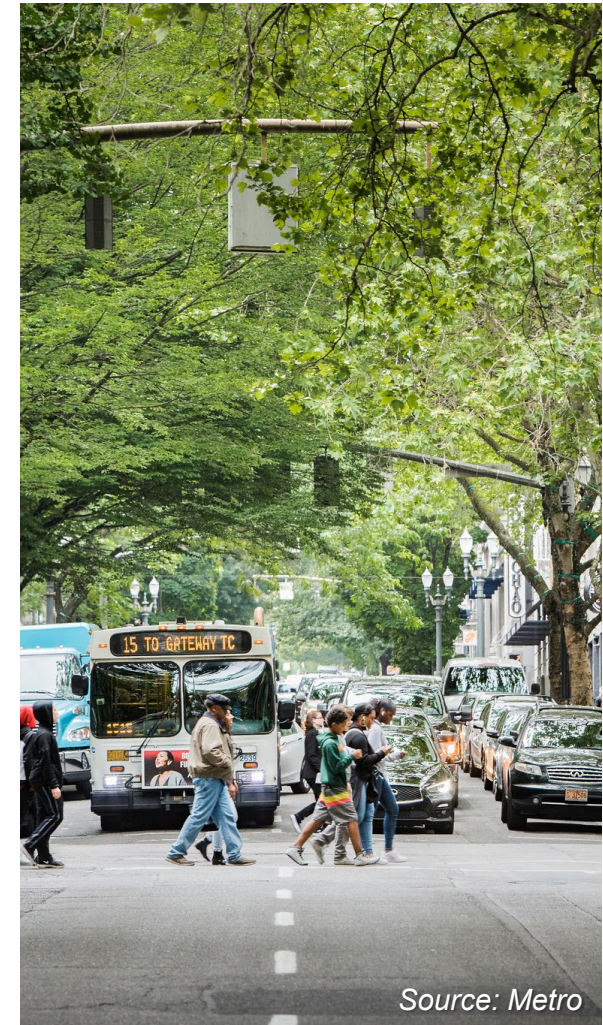


DLCD



Source: DLCD

Climate-Friendly and Equitable Communities



Source: Metro

Program Overview

August 2022

Oregon's Land Use and Transportation Planning System

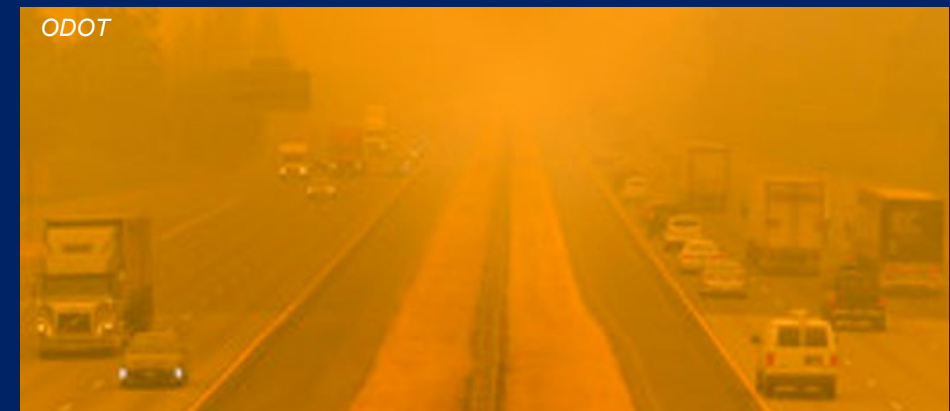
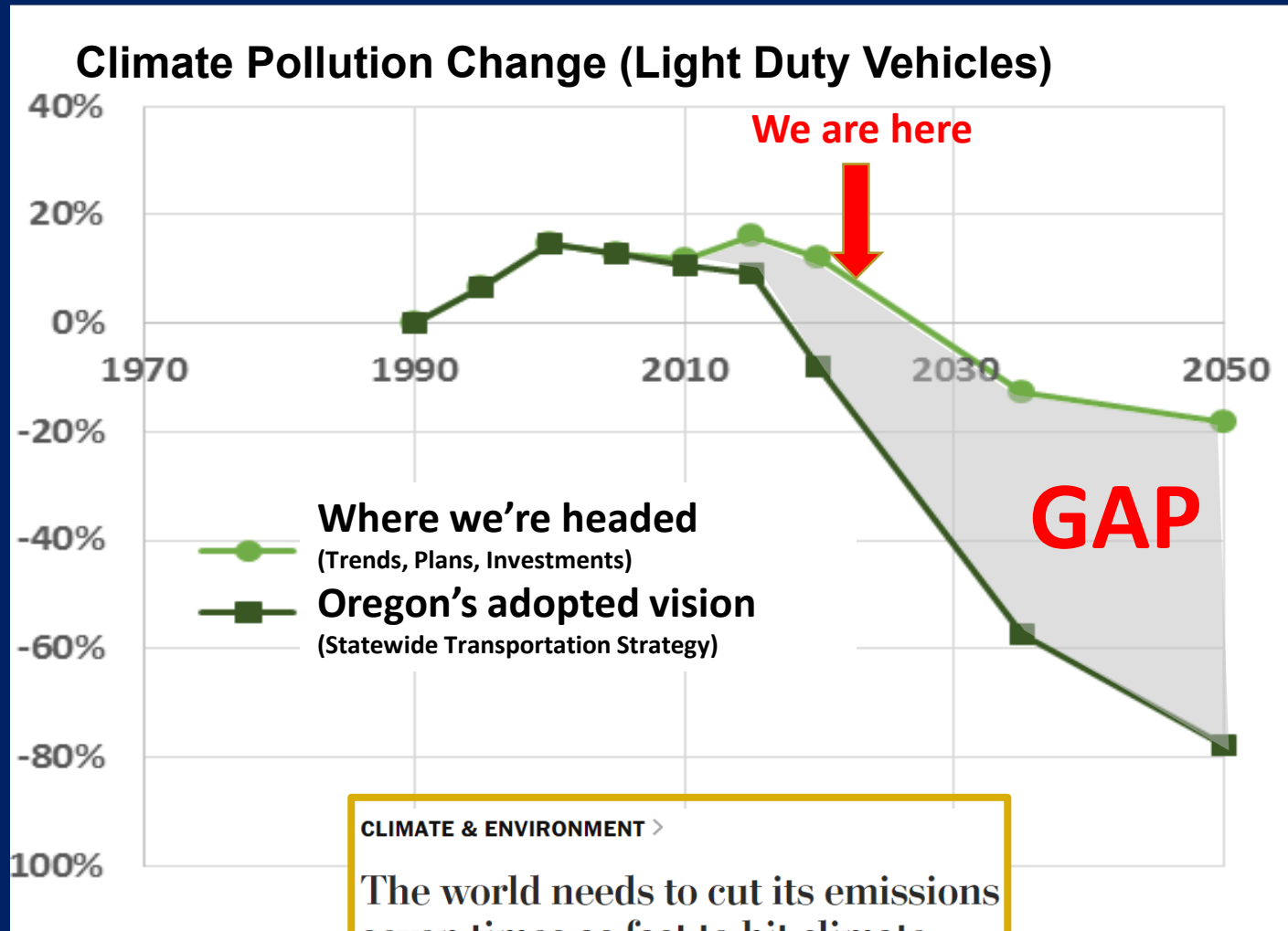
- Legislature launched land use planning program, passes land use laws
- Legislature created Department (DLCD) and Commission to implement planning program
- Commission adopts goals and rules local plans must meet
- Local governments adopt unique comprehensive plans, development codes, and transportation system plans



OREGON

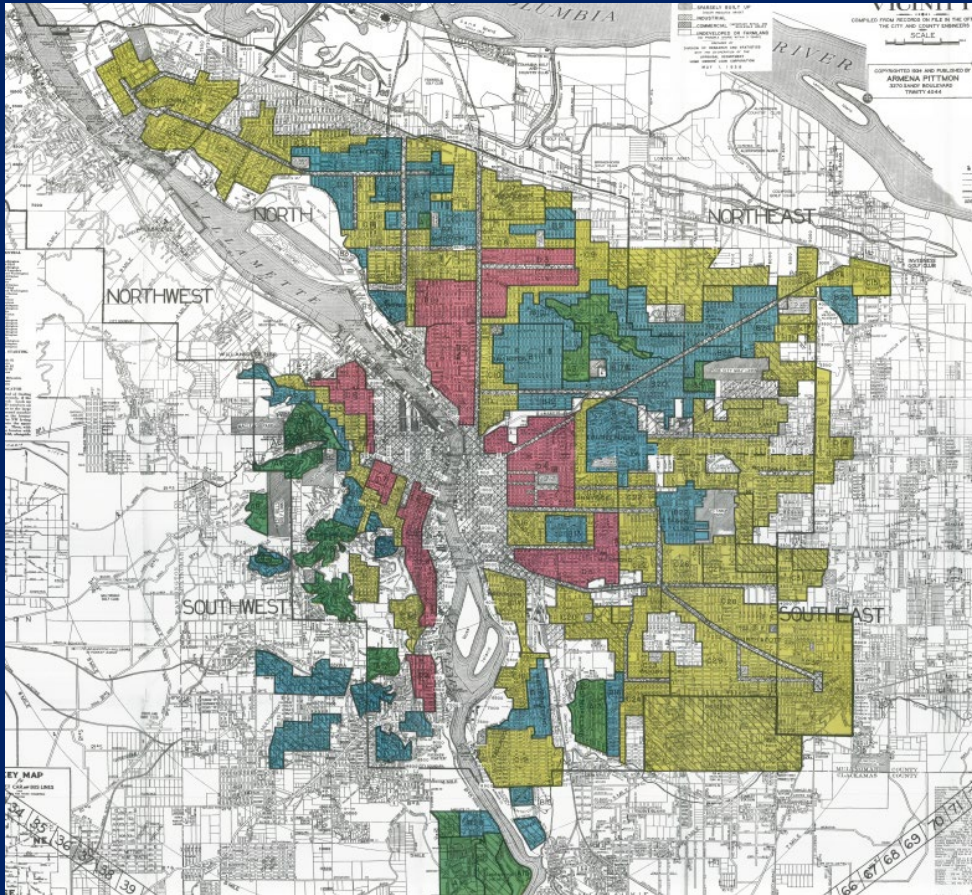
Department of
Land Conservation
& Development

Why this Program: Climate Working to Meet Oregon's Pollution Reduction Targets

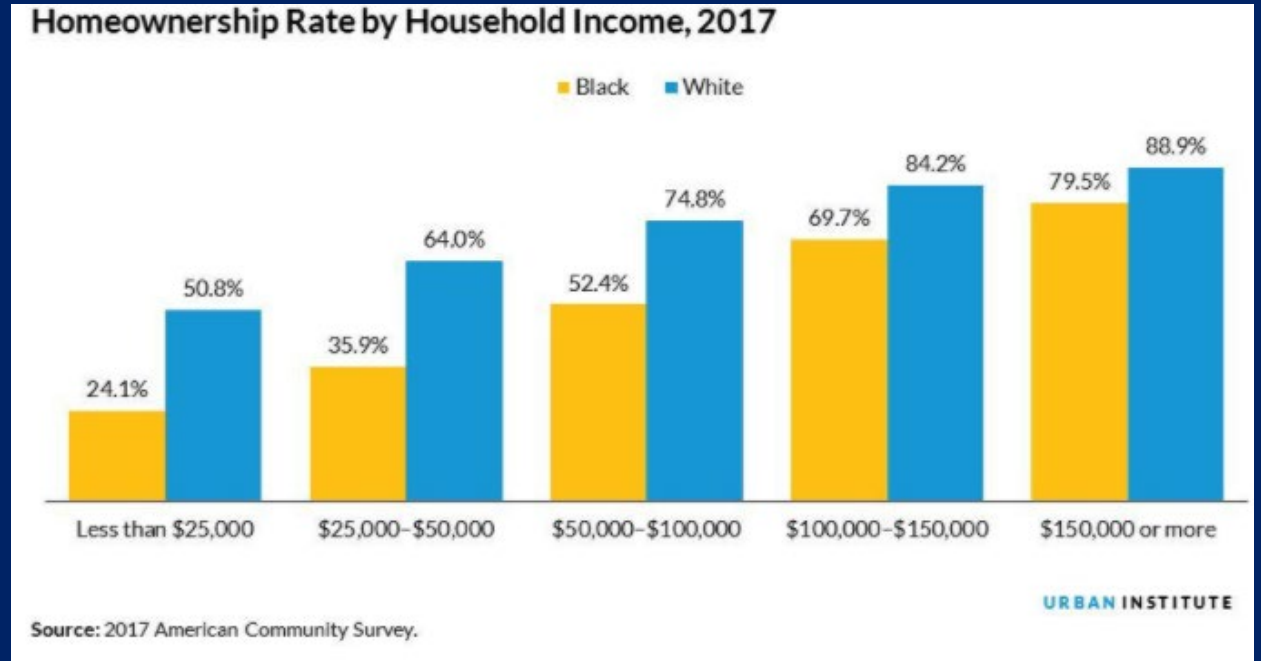


Why this Program: Equity

Working to Create Quality Housing and Transportation Choices



1938 federal Home Owners' Loan Corporation redlining map
Green = best, Blue = "still desirable" Yellow = "Definitely declining"
Red = "hazardous" dsl.richmond.edu/panorama/redlining



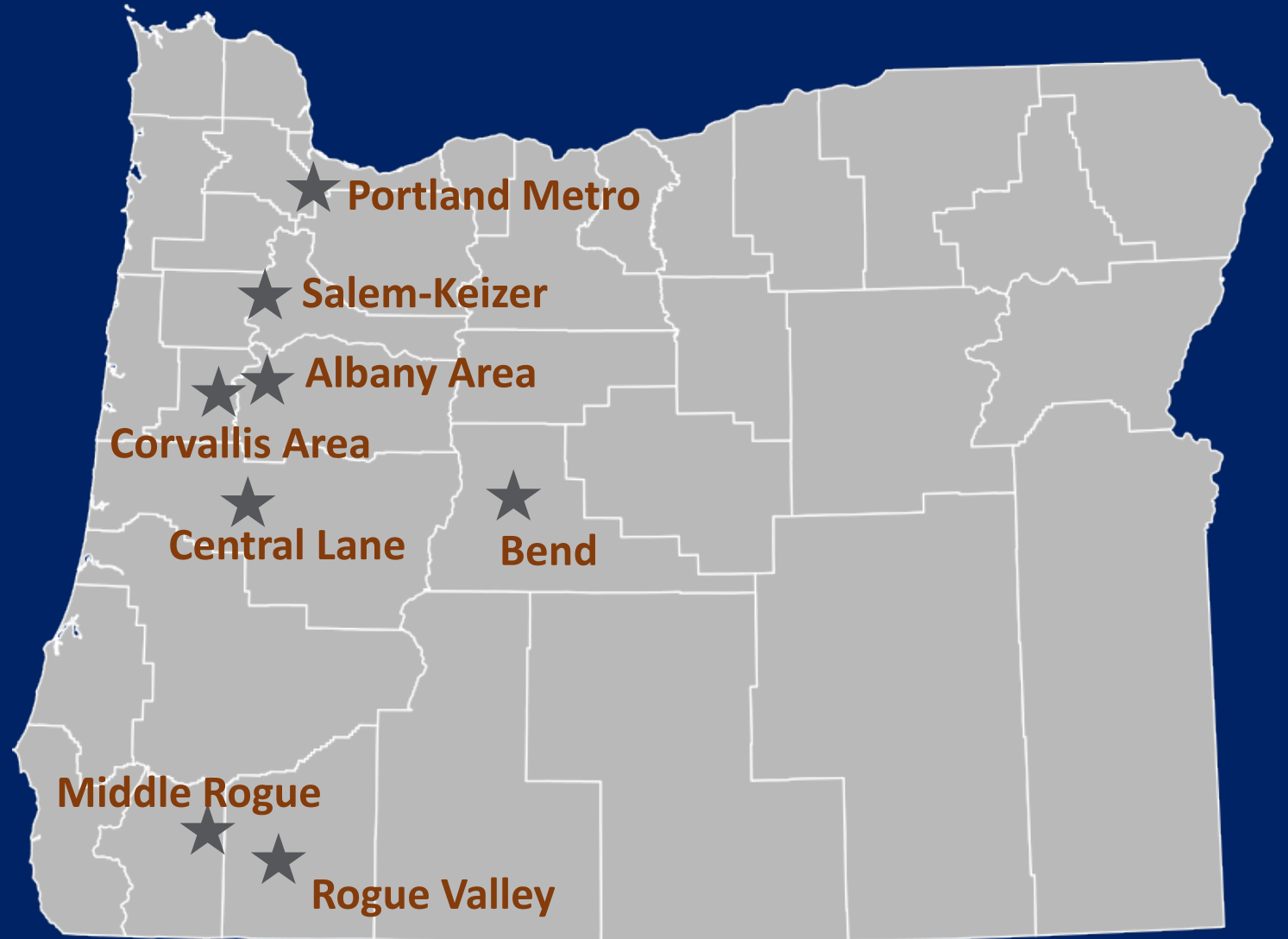
Intergenerational wealth mainly transfers through homes

Today: 71.9% of white households own homes
41.8% of Black households own homes

Program Covers Eight Regions

Communities
outside these areas
are not impacted

Legislatively directed
greenhouse gas
reduction targets
cover these eight
regions



The program works to:

- Meet legislative climate policy and goals**
- Increase housing and employment options**
- Foster vibrant downtowns and centers**
- Improve transportation choices**
- Promote equitable outcomes**

Regional Planning: Preferred Mix of Actions to Meet Pollution Reduction Goals

Largest 3 Regions: Portland Metro, Salem-Keizer, and Eugene-Springfield



How much does the preferred scenario reduce greenhouse gas emissions?

Reference Scenario
(current plans)

-3%

Preferred Scenario

-20%



Source: Metro

In 15 communities

Climate-Friendly Area Zoning

Zone areas to allow walkable cities with a mix of residential, office, retail, services, and public uses.

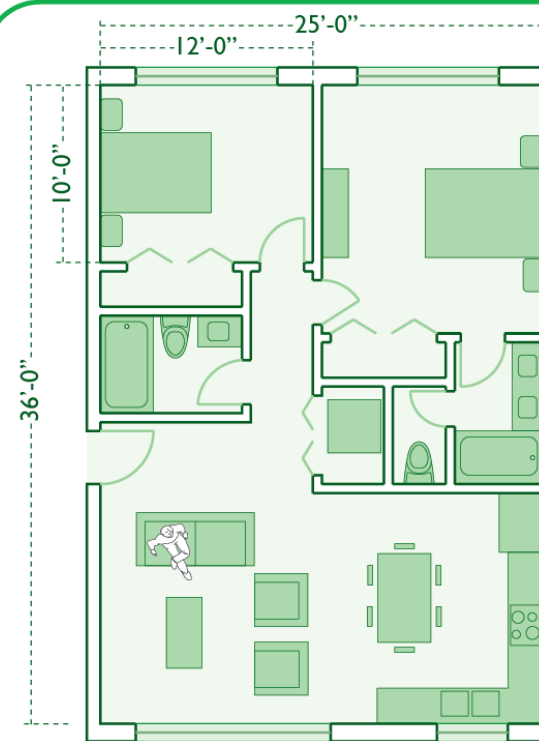
- Imagine downtowns and neighborhood centers
- Choose either density/height standards or outcomes
- High-quality pedestrian, bicycle, and transit networks

In Portland Metro, use Region 2040 centers, *not* climate-friendly areas

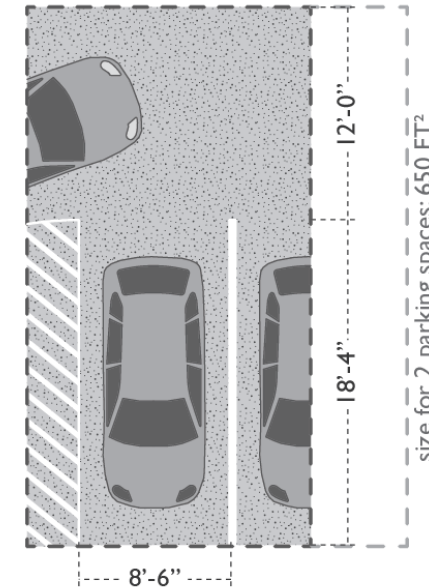
Parking Reform and Management



- Help housing get built
- Help small businesses open and redevelop
- Improve walkability
- Improve equity



2 BEDROOM APARTMENT
900 FT²



1.5 PARKING SPACES
INCLUDING AISLES
488 FT²



Parking Reform

- Market-determined parking near frequent transit
- Market-determined parking for affordable housing and other equity uses
- Mandates no higher than one space/unit multifamily
- Cities choose one of three approaches for reform

No Mandated Parking ≠ No Provided Parking

Evidence shows builders tend to provide parking demanded by tenants

Electric Vehicle Charging

Builds on legislative work

HB 2180 (2021)



New multifamily and multi-use development must include electrical conduit (wiring tubes) to serve 40% of parking spaces

Minimum five residential units
Charging stations, wiring, and power not required

- Existing rules since 90s
- Communities have done good work
- We know we need to do more
- **Connected, safe, and complete networks**



Transportation Planning

Updates to existing
planning rules

Plan for investments in:

- Pedestrian
- Bicycle
- Transit
- *Continue planning for autos & freight*

Prioritize transportation investments in:

- Climate-friendly areas
- Neighborhoods with underserved populations
- Access to key destinations



Transportation Planning

Local plans direct transportation investments

Project selection

- Includes range of factors
- Must meet updated goals
- Projects together must not increase pollution

Measuring success

- Use multiple measures
- Not just moving cars

Expensive street widenings

- Review alternatives



Transportation Planning

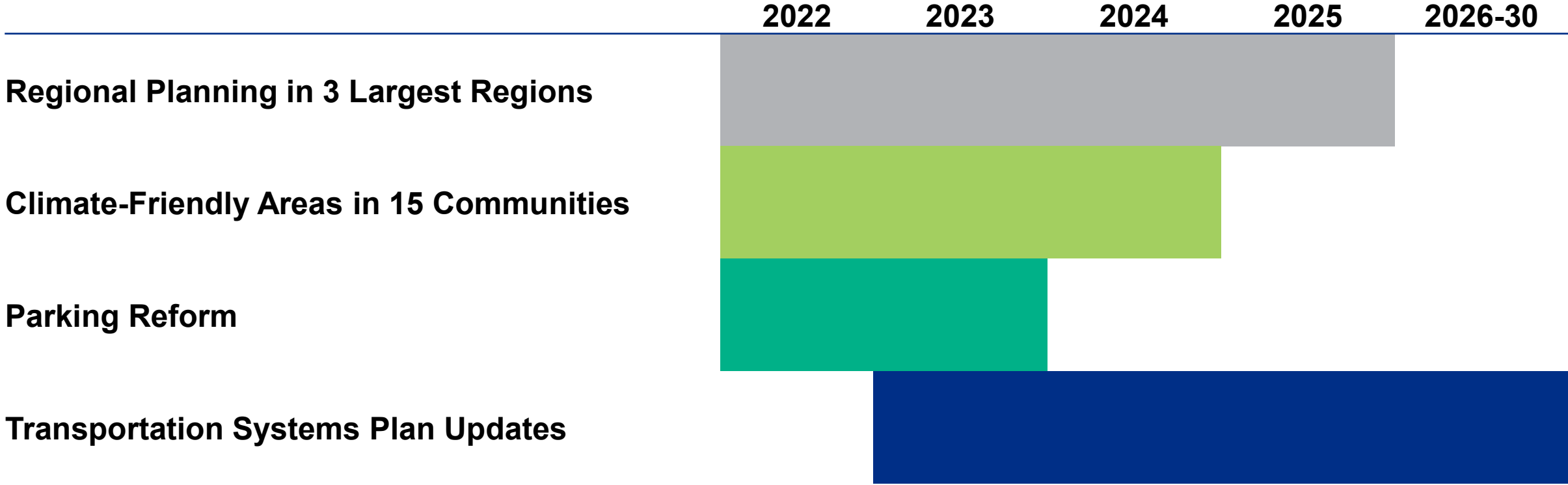
**Prioritize investments
to meet state and
local goals**

Equity Throughout

- **Core work:** boost transportation and housing options for Oregonians
- Anticipate and mitigate displacement that may occur in Climate-friendly areas
- Center voices of underserved populations in decision-making processes
- Equity performance measures

Underserved Populations <i>OAR 660-012-0125</i>	Decision Making <i>OAR 660-012-0130</i>	Equity Analysis <i>OAR 660-012-0135</i>
<ul style="list-style-type: none">• Community-led engagement and decision making• Identify neighborhoods with concentration of underserved	<ul style="list-style-type: none">• Community Involvement Program• Benefits and burdens assessment• Reporting	<ul style="list-style-type: none">• Engage• Assess• Gather data• Align with outcomes• Strategy and indicators• Report back

Implementation Timeline



Learn More Online

Search "DLCD CFEC"



Source: ODOT



Source: Metro



Source: DLCD

Sign up for email updates
oregon.gov/LCD/LAR/Pages/CFEC.aspx