



**OREGON BBUDGET INFORMATION
TRACKING SYSTEM**

**Department of Administrative Services
Budget & Management Division**

Report Manual – Agency Users

Analysis & Comparison Reports	6
ANA100A – Version / Comparison Report	6
Selection Criteria	6
ANA101A – Package Comparison Report	8
ANA102A – Inflation Forecast Report	9
ANA103A – Inflation Analysis Report.....	10
ANA104A – Mass Transit Audit Report.....	11
ANA105A – Standard Inflation Analysis Report	12
Audit Reports	13
AUD003A – Agency Actuals Audit Report	13
AUD004 – Transfers and Special Payments.....	14
AUD100 – Audit Error Report.....	15
Budget Development Reports	16
BDV001A – Agency Worksheet – Revenue & Expenditure Detail.....	16
BDV002A – Detail Revenue & Expenditure – Requested Budget	17
BDV004B – Detail Revenue & Expenditure by Package Group	18
BDV102A – Modified Essential Budget Level	19
BDV104 – Biennial Budget Summary	20
BDV110 – Program Unit Summary by Appropriated Fund	20
BDV200 – Analyst/Appeal Report	22
Budget Execution Reports	23
BEX001A – Budget to Actuals.....	23
BEX100 – Budget Execution Actions	25
Budget Start-Up Reports	26
BSU002A – Cross Reference Report.....	26
BSU003A – Cross Reference Listing & Packages.....	27
BSU004A – Policy Package List by Priority	28
BSU006 – Cross Reference Outcome Report	29
Statewide Queries	30
STW007 – Statewide Query	30
STW009 – Statewide Package Query.....	31
STW011 – Statewide Comparison	32
EXTRACTS	34
EX5_B – Version Extract.....	34
Data Elements	34
Table(s)	34

INTRODCUTION TO REPORTS

Report Standards and Default Printers

All reports print in pre-determined formats that include the following:

- Font Size and Style
- Margins
- Orientation
 - a. The majority of reports print in Landscape format with the exception of some presentation reports that are designed to print in Portrait format.

Report Header information generally includes:

- Agency Name
- Agency Number
- Report Name
- Biennium
- Version Name
- Version Sequence Number

Report Footer information generally includes:

- Date Printed
- Time Printed
- Report Name
- Report Number
- Page Numbers

Default Printer

When using **<Print>** from the Report Viewer or Report Sets Viewer, the reports print to the default printer selected in Windows setup, unless modified by the user. See **Printer Setup** for information on changing the printer.

Report Viewer

Reporting → [Report]

Administrative Svcs, Dept of **Agency Number: 10700**
 Agency Worksheet - Revenues & Expenditures Version: A - 01 - Agency Working
 2013-15 Biennium Cross Reference Number: 10700-000-00-00000
 Administrative Svcs, Dept of

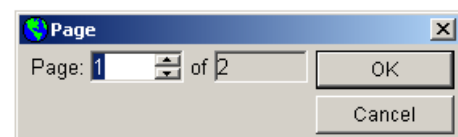
DESCRIPTION	2009-11 Actuals	2011-13 Leg Adopted Budget	2011-13 Emergency Boards	2011-13 Leg Approved Budget	2013-15 Base Budget	2013-15 Current Service Level
BEGINNING BALANCE						
0025 Beginning Balance						
4400 Lottery Funds Ltd	68,143,043	283,069,837	-	283,069,837	228,650,723	228,650,723
4430 Lottery Funds Debt Svc Ltd	6,173,051	3,361,885	-	3,061,885	1,710,274	1,710,274
3010 Other Funds Cap Improvement	3,158,042	3,159,042	-	3,158,042	-	-
3020 Other Funds Cap Construction	7,257,423	10,700,137	-	10,700,137	8,375,957	8,375,957
3200 Other Funds Non-Ltd	240,425,195	240,542,252	-	240,542,252	70,344,624	70,344,624
3400 Other Funds Ltd	180,351,532	167,107,874	-	167,107,874	144,816,323	144,816,323
3430 Other Funds Debt Svc Ltd	51,026,663	32,534,178	-	32,534,178	27,859,558	27,859,558
All Funds	585,537,949	742,174,985	-	742,174,985	486,757,440	486,757,440
0030 Beginning Balance Adjustment						
4400 Lottery Funds Ltd	893,750	(50,513,426)	(5,818,791)	(104,332,127)	(170,811,723)	(170,811,723)
4430 Lottery Funds Debt Svc Ltd	(2,278)	2,148,367	5,065,441	0,914,036	(600,290)	(600,290)
3010 Other Funds Cap Improvement	-	(2,790,204)	-	(2,790,204)	369,838	369,838
3020 Other Funds Cap Construction	-	(4,324,200)	-	(4,324,200)	(4,324,200)	(4,324,200)
3200 Other Funds Non-Ltd	(152,959,407)	79,638,054	(13,300,000)	85,338,054	29,899,147	29,899,147
3400 Other Funds Ltd	(8,226,212)	(22,522,829)	-	(22,522,829)	(11,843,421)	(11,843,421)
3430 Other Funds Debt Svc Ltd	8,874,479	(4,770,648)	-	(4,770,648)	27,887,501	27,887,501
8850 General Fund Revenues	-	-	13,300,000	13,300,000	-	-
All Funds	(149,469,873)	(52,134,986)	47,740	(87,087,295)	(129,862,146)	(129,862,146)
TOTAL BEGINNING BALANCE						

04/25/14 11:27 AM Page 1 of 448 RDV006A - Agency Worksheet - Revenues & Expenditures RDV006A

When reports are generated, they are displayed in the 'Report Viewer'.

Viewing Reports:

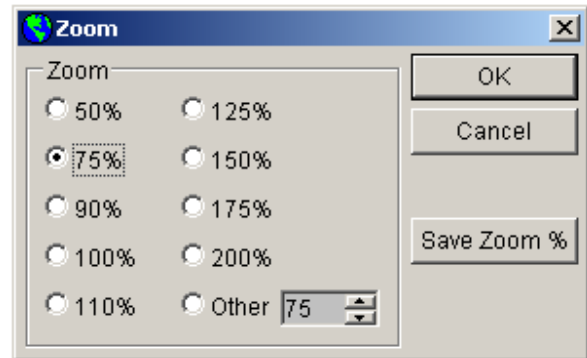
1. Click **<Re-Run>** to generate the report again.
(If the report contains a Selection Criteria window, you are prompted with the Selection Criteria window again. You may then make new selections or run the report again with the same criteria.)
2. Click **<Print>** to print the report. (See Printing Reports)
3. Click **<** or **>** to navigate page-by-page or **<<** or **>>** to navigate to first or last page.
4. Click **Page _ of _** for the Page pop-up. You may then select a specific page to navigate to.
5. Click **<Zoom>** to change the zoom. (See Updating the Zoom %)
6. Click **<Save as Extract>** to export the report to an Excel file. (When this is selected, the selected report is then opened in Excel.)



Updating the Zoom %:

The Zoom window allows you to select a new zoom for your current report or save a default zoom for all reports.

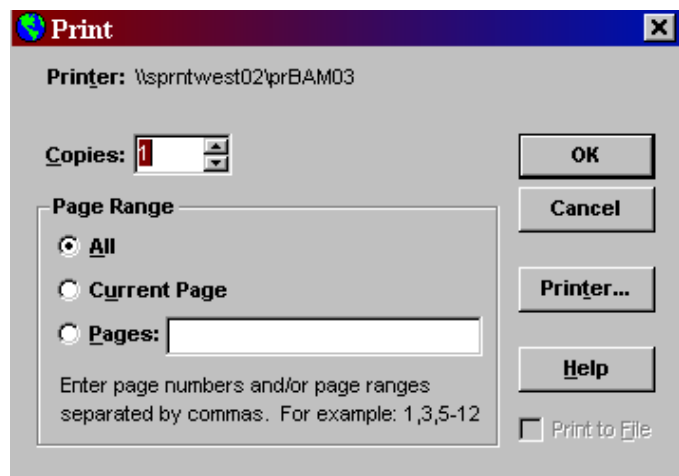
1. Click the radio button next to the **Zoom** percentage you wish to view. If you wish to enter a custom percentage, select the **Other** radio button and enter a custom percentage or use the up/down arrows to scroll to the desired percentage.
2. Click **<OK>** to use this setting for the current open report only – or click **<Save Zoom %>** to Save this setting as your default zoom.
 - a. When reports are selected, the zoom will default to the settings selected here. To modify, repeat the above steps.



Printing Reports

This pop-up appears after selecting **<Print>** from the report viewer.

1. Select the number of **Copies**.
2. Select the radio button for your desired **Page Range**.
 - a. If **'All'** is selected, all pages of the report are printed.
 - b. If **'Current Page'** is selected, only the page which has focus is printed.
 - c. If **'Pages:'** is selected, enter the page numbers and/or page ranges to print.
3. Click **<Printer>** to select a printer other than the printer identified at the top of the window. (The default windows printer is always selected unless.
4. Select **<OK>** to print.



REPORTS

Analysis & Comparison Reports

ANA100A – Version / Comparison Report

This report shows a comparison of two columns dynamically selected by the user. The first calculated column shows a difference in dollars between Columns 1 and 2 and the second calculated column shows a percentage change from Column 1 to Column 2. This report is used by agencies and SABRS to analyze changes in budget data.

When selecting versions and columns be sure to select them in chronological order, with version 2 and column 2 being the more recent of the two version/columns selected.

Selection Criteria	<ul style="list-style-type: none"> • Column 1 – Version • Column 1 – Title • Column 2 – Version • Column 2 – Title • Show Variances Only • Cross Reference
Level(s) of Reporting	<ul style="list-style-type: none"> • Cross Reference
Columns	<ul style="list-style-type: none"> • Dynamically Selected Version/Column • Dynamically Selected Version/Column • Column 2 minus Column 1 • % Change from Col 1 to Col 2

Administrative Svcs, Dept of		Agency Number: 10700			
Version / Column Comparison Report - Detail		Cross Reference Number:10700-030-03-00-00000			
2015-17 Biennium					
Internal Audit					
Description	Agency Working (A-01) 2013-15 Leg Approved Budget	Agency Working (A-01) 2015-17 Base Budget	Column 2 minus Column 1	% Change from Column 1 to Column 2	
	Column 1	Column 2			
BEGINNING BALANCE					
0025 Beginning Balance					
3400 Other Funds Ltd	(54,080)	-	54,080	100.00%	
0030 Beginning Balance Adjustment					
3400 Other Funds Ltd	(8,850)	-	8,850	100.00%	
TOTAL BEGINNING BALANCE					
3400 Other Funds Ltd	(62,930)	-	62,930	100.00%	
REVENUE CATEGORIES					
CHARGES FOR SERVICES					
0415 Admin and Service Charges					
3400 Other Funds Ltd	338,774	338,774	0	-	
TRANSFERS OUT					
2010 Transfer Out - Intrafund					
3400 Other Funds Ltd	(19,612)	(19,612)	0	-	
AVAILABLE REVENUES					
3400 Other Funds Ltd	256,232	319,162	62,930	24.56%	
EXPENDITURES					
PERSONAL SERVICES					
SALARIES & WAGES					
3110 Class/Unclass Sal. and Per Diem					
3400 Other Funds Ltd	131,323	-	(131,323)	-100.00%	
OTHER PAYROLL EXPENSES					
3210 Empl. Rel. Bd. Assessments					
3400 Other Funds Ltd	40	-	(40)	-100.00%	

Table(s)	• Budget (budget)
-----------------	-------------------

ANA101A – Package Comparison Report

This report is used to compare data elements across all packages or within a single package between two versions. It is used by agencies and SABRS to analyze the change in package data.

When selecting versions be sure to select them in chronological order, with version 2 being the more recent of the two versions selected.

Selection Criteria	<ul style="list-style-type: none"> • Cross Reference • Package • Version • Version • Variances Only
Level(s) of Reporting	<ul style="list-style-type: none"> • Cross Reference
Columns	<ul style="list-style-type: none"> • Dynamically Selected Column • Dynamically Selected Column • Column 2 – Column 1 • % Change from Col 1 to Col 2
Table(s)	<ul style="list-style-type: none"> • Budget (budget)

Administrative Svcs, Dept of		Agency Number: 10700		
Package Comparison Report - Detail		Variances ONLY Report		Cross Reference Number: 10700-030-03-00-00000
2013-15 Biennium		Package: Analyst Adjustments		
Internal Audit		Pkg Group: POL	Pkg Type: 090	Pkg Number: 090
Description	Agency GRB Working (J-01)	Agy. Leg. Adopted Working (K-01)	Column 2 Minus Column 1	% Change from Column 1 to Column 2
	Column 1	Column 2		
REVENUE CATEGORIES				
CHARGES FOR SERVICES				
0415 Admin and Service Charges				
3400 Other Funds Ltd	-	(270,103)	(270,103)	100.00%
AVAILABLE REVENUES				
3400 Other Funds Ltd	-	(270,103)	(270,103)	100.00%
TOTAL AVAILABLE REVENUES	-	(\$270,103)	(\$270,103)	100.00%
EXPENDITURES				
PERSONAL SERVICES				
OTHER PAYROLL EXPENSES				
3220 Public Employees Retire Cont				
3400 Other Funds Ltd	(34,042)	(26,188)	7,854	23.07%
P.S. BUDGET ADJUSTMENTS				
3465 Reconciliation Adjustment				
3400 Other Funds Ltd	(10,455)	(21,120)	(10,665)	(102.01%)
PERSONAL SERVICES				
3400 Other Funds Ltd	(44,497)	(47,308)	(2,811)	(6.32%)
TOTAL PERSONAL SERVICES	(\$44,497)	(\$47,308)	(\$2,811)	(6.32%)
EXPENDITURES				
EXPENDITURES				

ANA102A – Inflation Forecast Report

This report calculates inflation amounts based on a selectable driver column and standard inflation rates stored on the Accounts table. The user chooses a column to drive inflation, typically the Base Budget column. The report then subtracts amounts contained in phase-out packages for a Net column. The Net column amounts are multiplied by the standard inflation rates for a Calculated Inflation Amount. Agency users can use this report as an input document for inflation packages.

Selection Criteria	<ul style="list-style-type: none"> • Inflation Driver Column • Cross Reference
Level(s) of Reporting	<ul style="list-style-type: none"> • Cross Reference
Columns	<ul style="list-style-type: none"> • Dynamically Selected Column • Less Phase Out and One-Time Packages • Dynamically Selected Column minus Column 2 • Standard Inflation Rate • Calculated Inflation Forecast
Table(s)	<ul style="list-style-type: none"> • Budget (budget)

Administrative Svcs, Dept of			Agency Number: 10700		
2013-15 Biennium			Version: A - 01 - Agency Working		
Administrative Svcs, Dept of			Cross Reference Number: 10700-030-03-00-00000		
			Internal Audit		
Description	2013-15 Base Budget	Less: Phase-out and One-time Packages	Net 2013-15 Base Budget	Standard Inflation Rate	Calculated Inflation Forecast
Generic Services & Supplies					
4100 Instate Travel					
3400 Other Funds Ltd	2,786	-	2,786	3.00%	84
4150 Employee Training					
3400 Other Funds Ltd	678	-	678	3.00%	20
4175 Office Expenses					
3400 Other Funds Ltd	1,907	-	1,907	3.00%	57
4200 Telecommunications					
3400 Other Funds Ltd	2,229	-	2,229	3.00%	67
4275 Publicity and Publications					
3400 Other Funds Ltd	1,026	-	1,026	3.00%	31
4400 Dues and Subscriptions					
3400 Other Funds Ltd	253	-	253	3.00%	8
4700 Expendable Prop 250 - 5000					
3400 Other Funds Ltd	415	-	415	3.00%	12
4715 IT Expendable Property					
3400 Other Funds Ltd	12	-	12	3.00%	-
Generic Services & Supplies					
3400 Other Funds Ltd	9,306	-	9,306	3.00%	279
Total Generic Services & Supplies	\$9,306	-	\$9,306	3.00%	\$279
Price List Accounts					
4300 Professional Services					
04/24/14 9:25 AM					
Page 1 of 2					
Inflation Forecast Report ANA102A					

ANA103A – Inflation Analysis Report

This report is similar to the Forecast report. The user chooses the driver column typically the Base Budget column. The Net amount is calculated by subtracting the phased-out programs from the selected inflation driver column. For the Analysis report, the Net is compared to inflation packages already in the agency’s budget. The product is the Calculated Inflation Rate used by the agency.

Selection Criteria	<ul style="list-style-type: none"> • Inflation Driver Column • Cross Reference
Level(s) of Reporting	<ul style="list-style-type: none"> • Cross Reference
Columns	<ul style="list-style-type: none"> • Dynamically Selected Column • Less Phase Out and One-Time Packages • Dynamically Selected Column minus Column 2 • Inflation Packages • Calculated Inflation Rate
Table(s)	<ul style="list-style-type: none"> • Budget (budget)

Administrative Svcs, Dept of		Agency Number: 10700			
2013-15 Biennium		Version: A - 01 - Agency Working			
Administrative Svcs, Dept of		Cross Reference Number: 10700-030-03-00-00000			
		Internal Audit			
Description	2013-15 Base Budget	Less: Phase-out and One-time Packages	Net 2013-15 Base Budget	Inflation Packages	Calculated Inflation Rate
4275 Publicity and Publications					
3400 Other Funds Ltd	1,026	-	1,026	25	2.44%
4400 Dues and Subscriptions					
3400 Other Funds Ltd	253	-	253	6	2.37%
4700 Expendable Prop 250 - 5000					
3400 Other Funds Ltd	415	-	415	10	2.41%
4715 IT Expendable Property					
3400 Other Funds Ltd	12	-	12	-	0.00%
Generic Services & Supplies					
3400 Other Funds Ltd	9,306	-	9,306	223	2.40%
Total Generic Services & Supplies	\$9,306	-	\$9,306	\$223	2.40%
Price List Accounts					
4225 State Gov. Service Charges					
3400 Other Funds Ltd	8,502	-	8,502	67,133	789.61%
4300 Professional Services					
3400 Other Funds Ltd	9,398	-	9,398	263	2.80%
4325 Attorney General					
3400 Other Funds Ltd	2,557	-	2,557	381	14.90%
4425 Facilities Rental and Taxes					
3400 Other Funds Ltd	4,014	-	4,014	205	5.11%
Price List Accounts					
3400 Other Funds Ltd	24,471	-	24,471	67,982	277.81%

ANA104A – Mass Transit Audit Report

This report is intended to be used at multiple times during the Budget Development process. It will be mostly used during the CSL phase. The report calculates the maximum Mass Transit allowed by Fund Type. It provides Agencies a tool for either data entry of mass transit or review of what was entered.

Selection Criteria	<ul style="list-style-type: none"> Version
Level(s) of Reporting	<ul style="list-style-type: none"> Cross Reference
Columns	<ul style="list-style-type: none"> Fund Types Total Funds
Table(s)	<ul style="list-style-type: none"> Budget (budget)

ANA104A - Mass Transit Audit Report					
2015-17 Biennium 62900 Forestry, Dept of			A - 01 - Agency Working 62900-050-50-00-00000		
Description	General Fund	Lottery Funds	Other Funds	Federal Funds	Total Funds
Class/Unclass Sal. and Per Diem - Base					
3110 Class/Unclass Sal. and Per Diem	5,809,859	-	3,943,580	-	9,753,439
3160 Temporary Appointments	14,342	-	7,730	-	22,072
3170 Overtime Payments	4,698	-	2,850	-	7,548
3180 Shift Differential	213	-	113	-	326
3190 All Other Differential	9,697	-	6,497	-	16,194
Class/Unclass Sal. and Per Diem - Base	\$5,838,809	-	\$3,960,770	-	\$9,799,579
Total Class/Unclass Sal. and Per Diem	\$5,838,809	-	\$3,960,770	-	\$9,799,579
Mass Transit Rate	0.006	0.006	0.006		
Maximum Mass Transit	\$35,033	-	\$23,765	-	\$58,798
3260 Mass Transit Tax	31,647	-	21,453	-	53,100
Maximum Package 010 Entry	\$3,386	-	\$2,312	-	\$5,698
Under/(Over)Maximum Value	\$3,386	-	\$2,312	-	\$5,698

ANA105A – Standard Inflation Analysis Report

This report is similar to the Inflation Analysis report. The user chooses the driver column typically the Base Budget column. The Net amount is calculated by subtracting the phased-out programs from the selected inflation driver column. For this report both Package 010 and 031 are displayed. The Net is compared to the values entered in these packages, with the product being the Calculated Inflation Rate used by the agency.

Selection Criteria	<ul style="list-style-type: none"> Inflation Driver Column Cross Reference
Level(s) of Reporting	<ul style="list-style-type: none"> Cross Reference
Columns	<ul style="list-style-type: none"> Dynamically Selected Column Less Phase Out and One-Time Packages Dynamically Selected Column minus Column 2 Inflation Packages 010 and 031 Calculated Inflation Rate
Table(s)	<ul style="list-style-type: none"> Budget (budget)

Administrative Svcs, Dept of				Agency Number: 10700		
2013-15 Biennium		Version: A - 01 - Agency Working				
Administrative Svcs, Dept of		Cross Reference Number: 10700-030-03-00-00000				
Internal Audit						
Description	2013-15 Base Budget	Less: Phase-out and One-time Packages	Net 2013-15 Base Budget	Package 010 Non-PICS Psnl Svc / Vacancy	Package 031 Standard Inflation	Calculated Inflation Rate
Generic Services & Supplies						
4100 Instate Travel						
3400 Other Funds Ltd	2,786	-	2,786	-	67	2.41%
4150 Employee Training						
3400 Other Funds Ltd	678	-	678	-	16	2.36%
4175 Office Expenses						
3400 Other Funds Ltd	1,907	-	1,907	-	46	2.41%
4200 Telecommunications						
3400 Other Funds Ltd	2,229	-	2,229	-	53	2.38%
4275 Publicity and Publications						
3400 Other Funds Ltd	1,026	-	1,026	-	25	2.44%
4400 Dues and Subscriptions						
3400 Other Funds Ltd	253	-	253	-	6	2.37%
4700 Expendable Prop 250 - 5000						
3400 Other Funds Ltd	415	-	415	-	10	2.41%
4715 IT Expendable Property						
3400 Other Funds Ltd	12	-	12	-	-	0.00%
Generic Services & Supplies						
3400 Other Funds Ltd	9,306	-	9,306	-	223	2.40%
Total Generic Services & Supplies	\$9,306	-	\$9,306	-	\$223	2.40 %
Price List Accounts						
4300 Professional Services						
<div style="display: flex; justify-content: space-between; font-size: small;"> 04/24/14 10:16 AM Page 1 of 2 Standad Inflation Analysis Report ANA105A </div>						

Audit Reports

AUD003A – Agency Actuals Audit Report

This report shows the user the Actual Expenditures that were loaded into ORBITS from R*Stars, how they have changed the values that were loaded and then compares those two columns to their Legislatively Approved Budget for the biennium that is being reported. This report is used during the Actuals Audit phase.

Selection Criteria	<ul style="list-style-type: none"> Cross Reference
Level(s) of Reporting	<ul style="list-style-type: none"> Cross Reference
Columns	<ul style="list-style-type: none"> Legislatively Approved Budget Actual Revenue & Expenditure data loaded from R*Stars Actuals column on ORBITS Column 2 minus Column 3 Column 3 minus Column 1
Table(s)	<ul style="list-style-type: none"> Budget (budget)

<i>Administrative Svcs, Dept of</i>		<i>Administrative Svcs, Dept of: 10700</i>				
Agency Actuals Audit Report 2015-17 Biennium BAM Administration		Version: A - 01 - Agency Working 10700-002-01-00-00000 Cross Reference Number: All				
Description	2011-13 Leg Approved Budget	2011-13 Biennium R*STARS Actuals	2011-13 Actuals	Difference between ORBITS & R*STARS Actuals	Difference between ORBITS Actuals & LAB	
REVENUE CATEGORIES						
3400 Other Funds Ltd	6,552,366	3,440,313	3,440,313	-	(3,112,053)	
TOTAL REVENUE CATEGORIES	\$6,552,366	\$3,440,313	\$3,440,313	-	(\$3,112,053)	
TRANSFERS OUT						
2010 Transfer Out - Intrafund						
3400 Other Funds Ltd	(1,426,778)	(713,129)	(713,129)	-	713,649	
3430 Other Funds Debt Svc Ltd	-	(211)	(211)	-	(211)	
All Funds	(1,426,778)	(713,340)	(713,340)	-	713,438	
AVAILABLE REVENUES						
3400 Other Funds Ltd	7,253,899	2,727,184	2,871,665	144,481	(4,382,234)	
3430 Other Funds Debt Svc Ltd	-	(211)	-	211	-	
TOTAL AVAILABLE REVENUES	\$7,253,899	\$2,726,973	\$2,871,665	\$144,692	(\$4,382,234)	
EXPENDITURES						
PERSONAL SERVICES						
SALARIES & WAGES						
3110 Class/Unclass Sal. and Per Diem						
3400 Other Funds Ltd	4,050,624	1,723,537	1,723,537	-	(2,327,087)	
3160 Temporary Appointments						
3400 Other Funds Ltd	5,198	3,884	3,884	-	(1,314)	
3170 Overtime Payments						
3400 Other Funds Ltd	4,707	-	-	-	(4,707)	
3190 All Other Differential						
3400 Other Funds Ltd	22,582	375	375	-	(22,207)	
04/24/14 10:22 AM	Page 2 of 6			AUD003A - Agency Actuals Audit Report AUD003A		

AUD004 – Transfers and Special Payments

This report displays transfers in/out and special payments for the reporting agency and all relating transfers in/out and special payments from outside agencies. When transfers and special payments do not balance between agencies an amount will be reported in the Difference column. The user will have the option of printing just the Exception Report which will list only those transfers that are not in balance. This report is used by agencies and SABRS when verifying transfers between agencies.

Selection Criteria	<ul style="list-style-type: none"> • Report Selection (Detail/Exceptions/Detail with Exceptions) • Version • Column • Agencies • Report Agencies with Data Only
Level(s) of Reporting	<ul style="list-style-type: none"> • Agencywide
Columns	<ul style="list-style-type: none"> • Column Locked • Agency • Account No • Appropriated Fund • Dynamically Selected Column • Difference
Table(s)	<ul style="list-style-type: none"> • Budget (budget)

10700 Administrative Svcs, Dept of					
AUD004 - Transfers and Special Payments 2015-17 Biennium					Version: A01 - Agency Working
<i>Column Locked</i>	<i>Agency</i>	<i>Account No</i>	<i>Appropriated Fund</i>	<i>2011-13 Actuals</i>	<i>Difference</i>
Y	10700	1121 Tsfr From Governor, Office of the	3400 Other Funds Ltd	421,503	
Y	10700	2121 Tsfr To Governor, Office of the	4400 Lottery Funds Ltd	(1,815,295)	
Y	10700	2121 Tsfr To Governor, Office of the	3400 Other Funds Ltd	(1,110,416)	
Y	12100	1107 Tsfr From Administrative Svcs	4400 Lottery Funds Ltd	1,815,295	
Y	12100	1107 Tsfr From Administrative Svcs	3400 Other Funds Ltd	1,110,416	
Y	12100	2107 Tsfr To Administrative Svcs	3400 Other Funds Ltd	(421,503)	
		Difference			
Y	10700	1123 Tsfr From OR Business Development	3230 Other Funds Debt Svc Non-Ltd	29,084,379	
Y	10700	2123 Tsfr To OR Business Development	4400 Lottery Funds Ltd	(51,890,159)	
Y	10700	2123 Tsfr To OR Business Development	4430 Lottery Funds Debt Svc Ltd	(81,826,724)	
Y	10700	2123 Tsfr To OR Business Development	3230 Other Funds Debt Svc Non-Ltd	(2,682,435)	
Y	10700	2123 Tsfr To OR Business Development	3400 Other Funds Ltd	(1,178,663)	
Y	12300	1107 Tsfr From Administrative Svcs	4400 Lottery Funds Ltd	51,890,159	
Y	12300	1107 Tsfr From Administrative Svcs	4430 Lottery Funds Debt Svc Ltd	81,826,724	
Y	12300	1107 Tsfr From Administrative Svcs	3400 Other Funds Ltd	1,178,663	
Y	12300	1107 Tsfr From Administrative Svcs	3430 Other Funds Debt Svc Ltd	2,682,435	
Y	12300	2107 Tsfr To Administrative Svcs	3200 Other Funds Non-Ltd	(187,225)	
Y	12300	2107 Tsfr To Administrative Svcs	3430 Other Funds Debt Svc Ltd	(28,897,154)	
		Difference			

AUD100 – Audit Error Report

As budget data is prepared, users can request this report to determine if their budget data passes all of the validation edits. Specific edits have been programmed into the application that allows for a more streamlined audit process. Any edits that are “violated” are listed on this report

Specific edits dictate whether an error occurs in a detail reporting level or in a summary reporting level.

The edits that are present in the system are driven by version. Therefore, the version that the user is in determines the edits that are validated at any given point in time.

Selection Criteria	none
Level(s) of Reporting	<ul style="list-style-type: none"> Agencywide/Cross Reference
Columns	<ul style="list-style-type: none"> Error Number Error Description Account Number Cross Reference Number
Table(s)	<ul style="list-style-type: none"> Budget (budget)

<i>Administrative Svcs, Dept of</i>		<i>Agency Number: 10700</i>		
2015-17 Biennium		Version: A - 01 - Agency Working		
Audit Error Report - ACTUALS COLUMN AUDIT				
<i>Error No.</i>	<i>Error Description</i>	<i>Account Number</i>	<i>Cross Reference Number</i>	<i>Fatal</i>
1050	The Ending Balance of Appropriated Fund 3400 is negative in the 2011-13 Actuals column.		075-03-00-00000	<input type="checkbox"/>
1050	The Ending Balance of Appropriated Fund 3400 is negative in the 2011-13 Actuals column.		099-18-00-00000	<input type="checkbox"/>
1050	The Ending Balance of Appropriated Fund 3400 is negative in the 2011-13 Actuals column.		099-34-00-00000	<input type="checkbox"/>
1090	Expenditure accounts, except for Attrition and Reconciliation accounts, normally have positive amounts. Account 4715, IT Expendable Property, is negative for Fund 3400 in the 2011-13 Actuals column.	4715	004-15-00-00000	<input type="checkbox"/>
1090	Expenditure accounts, except for Attrition and Reconciliation accounts, normally have positive amounts. Account 4300, Professional Services, is negative for Fund 3400 in the 2011-13 Actuals column.	4300	030-01-00-00000	<input type="checkbox"/>
1090	Expenditure accounts, except for Attrition and Reconciliation accounts, normally have positive amounts. Account 4400, Dues and Subscriptions, is negative for Fund 3400 in the 2011-13 Actuals column.	4400	030-03-00-00000	<input type="checkbox"/>
1090	Expenditure accounts, except for Attrition and Reconciliation accounts, normally have positive amounts. Account 4650, Other Services and Supplies, is negative for Fund 3400 in the 2011-13 Actuals column.	4650	060-06-00-00000	<input type="checkbox"/>
1110	Revenue and Transfer-in accounts normally have positive balances. Account 0605, Interest Income, has a negative balance in the 2011-13 Actuals column. Appropriated Fund: 3400	0605	004-17-00-00000	<input type="checkbox"/>
1110	Revenue and Transfer-in accounts normally have positive balances. Account 0410, Charges for Services, has a negative balance in the 2011-13 Actuals column. Appropriated Fund: 3400	0410	011-03-00-00000	<input type="checkbox"/>
1110	Revenue and Transfer-in accounts normally have positive balances. Account 0605, Interest Income, has a negative balance in the 2011-13 Actuals column. Appropriated Fund: 3400	0605	011-06-00-00000	<input type="checkbox"/>
1110	Revenue and Transfer-in accounts normally have positive balances. Account 0605, Interest Income, has a negative balance in the 2011-13 Actuals column. Appropriated Fund: 3400	0605	013-06-00-00000	<input type="checkbox"/>
1110	Revenue and Transfer-in accounts normally have positive balances. Account 0605, Interest Income, has a negative balance in the 2011-13 Actuals column. Appropriated Fund: 3400	0605	040-01-00-00000	<input type="checkbox"/>

04/24/14
10:32 AM

Page 3 of 30

AUD100 - Audit Error Report
AUD100

Budget Development Reports

BDV001A – Agency Worksheet – Revenue & Expenditure Detail

This report is intended to be used by Agencies during the development of their budget. The report shows Actual and Estimated Expenditures and components of Base Budget. Agencies are able to see Revenue and Expenditure detail down to the appropriated fund type, as well as Positions and FTE by account.

Selection Criteria	<ul style="list-style-type: none"> • Cross Reference
Level(s) of Reporting	<ul style="list-style-type: none"> • Cross Reference
Columns	<ul style="list-style-type: none"> • Prior Biennium Actuals • Legislatively Adopted Budget • Emergency Boards • Legislatively Approved Budget • Base Budget • Current Service Level
Table(s)	<ul style="list-style-type: none"> • Budget (budget)

<i>Administrative Svcs, Dept of</i>		<i>Agency Number: 10700</i>				
Agency Worksheet - Revenues & Expenditures		Version: A - 01 - Agency Working				
2015-17 Biennium		Cross Reference Number: 10700-030-03-00-00000				
Internal Audit						
<i>DESCRIPTION</i>	<i>2011-13 Actuals</i>	<i>2013-15 Leg Adopted Budget</i>	<i>2013-15 Emergency Boards</i>	<i>2013-15 Leg Approved Budget</i>	<i>2015-17 Base Budget</i>	<i>2015-17 Current Service Level</i>
PERSONAL SERVICES						
SALARIES & WAGES						
3110 Class/Unclass Sal. and Per Diem						
3400 Other Funds Ltd	103,054	127,296	4,027	131,323	-	-
3160 Temporary Appointments						
3400 Other Funds Ltd	1,021	-	-	-	-	-
3190 All Other Differential						
3400 Other Funds Ltd	2,255	-	-	-	-	-
TOTAL SALARIES & WAGES						
3400 Other Funds Ltd	106,330	127,296	4,027	131,323	-	-
TOTAL SALARIES & WAGES	\$106,330	\$127,296	\$4,027	\$131,323	-	-
OTHER PAYROLL EXPENSES						
3210 Empl. Rel. Bd. Assessments						
3400 Other Funds Ltd	31	40	-	40	-	-
3220 Public Employees' Retire Cont						
3400 Other Funds Ltd	15,294	18,674	-	18,674	-	-
3221 Pension Obligation Bond						
3400 Other Funds Ltd	6,742	25,388	957	26,345	26,345	26,345
3230 Social Security Taxes						
3400 Other Funds Ltd	7,983	9,738	-	9,738	-	-

BDV002A – Detail Revenue & Expenditure – Requested Budget

This report is used by Agencies during the development of their budget. The report shows components of the Agency Request Budget, including Base, Packages and Current Service Level. Agencies are able to see Revenue and Expenditure detail down to the appropriated fund type, as well as Positions and FTE by account.

Selection Criteria	<ul style="list-style-type: none"> • Cross Reference
Level(s) of Reporting	<ul style="list-style-type: none"> • Cross Reference
Columns	<ul style="list-style-type: none"> • Base Budget • Total Essential Packages • Current Service Level • Total Policy Packages • Agency Request Budget
Table(s)	<ul style="list-style-type: none"> • Budget (budget)

<i>Administrative Svcs, Dept of</i>		<i>Agency Number: 10700</i>				
Detail Revenues & Expenditures - Requested Budget		Version: A - 01 - Agency Working				
2013-15 Biennium		Cross Reference Number: 10700-030-02-00-00000				
Statewide Initiatives						
Description	2013-15 Base Budget	Essential Packages	2013-15 Current Service Level	Policy Packages	2013-15 Agency Request Budget	
4150 Employee Training						
3400 Other Funds Ltd	40,260	(6,202)	34,058	9,700	43,758	
4175 Office Expenses						
3400 Other Funds Ltd	40,260	(3,130)	37,130	7,400	44,530	
4200 Telecommunications						
3400 Other Funds Ltd	27,010	(2,424)	24,586	6,000	30,586	
4225 State Gov. Service Charges						
3400 Other Funds Ltd	-	309,568	309,568	12,700	322,268	
4250 Data Processing						
3400 Other Funds Ltd	60,000	(29,280)	30,720	2,100	32,820	
4275 Publicity and Publications						
3400 Other Funds Ltd	3,380	(943)	2,437	1,400	3,837	
4300 Professional Services						
3400 Other Funds Ltd	430,766	(373,413)	57,353	-	57,353	
4375 Employee Recruitment and Develop						
3400 Other Funds Ltd	-	-	-	1,200	1,200	
4400 Dues and Subscriptions						
3400 Other Funds Ltd	3,380	(943)	2,437	1,400	3,837	
4425 Facilities Rental and Taxes						
3400 Other Funds Ltd	-	128,474	128,474	27,900	156,374	
4650 Other Services and Supplies						
3400 Other Funds Ltd	125,463	3,011	128,474	1,500	129,974	
4700 Expendable Prop 250 - 5000						

BDV004B – Detail Revenue & Expenditure by Package Group

This report is used by agencies during the development of their budget. It shows agencies a package breakdown by package type. The report prints an individual column listing for each package that currently exists for the package group and type selected.

Selection Criteria	<ul style="list-style-type: none"> • Cross Reference • Package Group • Package Type
Level(s) of Reporting	<ul style="list-style-type: none"> • Cross Reference
Columns	<ul style="list-style-type: none"> • Total Packages • Packages (column for each Package within the Package Group/Type selected)
Table(s)	<ul style="list-style-type: none"> • Budget (budget)

Administrative Svcs, Dept of		Agency Number 10700				
BDV004B		Version: A - 01 - Agency Working				
2013-15 Biennium		Cross Reference Number: 10700-055-05-00-00000				
Service Delivery						
Description	Total Policy Packages	Pkg: 106 ETS - Equipment Lifecycle Replacement Priority: 00	Pkg: 107 ETS - Support IT Infrastructure Growth Priority: 00	Pkg: 108 ETS - Leverage Technology Priority: 00	Pkg: 109 ETS - Security Priority: 00	Pkg: 111 ETS - Agency Companion POP Priority: 00
3270 Flexible Benefits						
3400 Other Funds Ltd	213,696	-	-	61,056	30,528	122,112
OTHER PAYROLL EXPENSES						
3400 Other Funds Ltd	549,138	-	-	145,664	77,311	326,163
TOTAL OTHER PAYROLL EXPENSES	\$549,138	-	-	\$145,664	\$77,311	\$326,163
PERSONAL SERVICES						
3400 Other Funds Ltd	1,745,538	-	-	447,344	244,159	1,054,035
TOTAL PERSONAL SERVICES	\$1,745,538	-	-	\$447,344	\$244,159	\$1,054,035
SERVICES & SUPPLIES						
4100 Instate Travel						
3400 Other Funds Ltd	5,670	-	-	1,620	810	3,240
4150 Employee Training						
3400 Other Funds Ltd	31,500	-	-	9,000	4,500	18,000
4175 Office Expenses						
3400 Other Funds Ltd	14,000	-	-	4,000	2,000	8,000
4200 Telecommunications						
3400 Other Funds Ltd	14,000	-	-	4,000	2,000	8,000
4225 State Gov. Service Charges						
3400 Other Funds Ltd	22,225	-	-	6,350	3,175	12,700
4250 Data Processing						
3400 Other Funds Ltd	1,869,348	739,548	-	2,800	1,400	1,125,600
4275 Publicity and Publications						

BDV102A – Modified Essential Budget Level

This report is intended to be used by BAM Analysts as an analytical tool when working on the Analyst Recommended Budget. This report shows Revenue and Expenditure detail by account down to the appropriated fund type.

Selection Criteria	<ul style="list-style-type: none"> • Version • Cross Reference
Level(s) of Reporting	<ul style="list-style-type: none"> • Cross Reference
Columns	<ul style="list-style-type: none"> • Legislatively Approved Budget • Base Budget • Current Service Level • Modified Essential Budget Level • Agency Request Budget • Column 34 from the Version Selected (ie: Select G01 Version this column will display the Governor’s Budget)
Table(s)	<ul style="list-style-type: none"> • Budget (budget)

<i>Administrative Svcs, Dept of</i>		<i>Agency Number: 10700</i>					
BDV102A - ARB, Mod CSL, An Rec		Version: G01 - Governor's Printed Budget					
2013-15 Biennium		Cross Reference Number: 10700-030-00-00-00000					
Chief Operating Office							
DESCRIPTION	2011-13 Leg Approved Budget	2013-15 Base Budget	2013-15 Current Service Level	Modified 2013-15 Current Service Level	2013-15 Agency Request Budget	2013-15 Governor's Budget	
8000 General Fund	24,543	24,896	24,896	24,896	24,896	24,896	
3400 Other Funds Ltd	727,857	585,664	585,664	585,664	677,248	677,248	
All Funds	752,400	610,560	610,560	610,560	702,144	702,144	
OTHER PAYROLL EXPENSES							
8000 General Fund	69,004	76,511	77,077	77,077	77,077	77,077	
3400 Other Funds Ltd	1,749,571	1,647,948	1,704,441	1,704,441	1,897,414	1,897,414	
TOTAL OTHER PAYROLL EXPENSES	\$1,818,575	\$1,724,459	\$1,781,518	\$1,781,518	\$1,974,491	\$1,974,491	
P.S. BUDGET ADJUSTMENTS							
3455 Vacancy Savings							
3400 Other Funds Ltd	(59,088)	(59,088)	(23,011)	(23,011)	(23,011)	(23,011)	
3465 Reconciliation Adjustment							
8000 General Fund	(7,911)	-	-	-	-	-	
3400 Other Funds Ltd	(457,950)	-	-	-	-	-	
All Funds	(465,861)	-	-	-	-	-	
3470 Undistributed (P.S.)							
3400 Other Funds Ltd	(211,164)	(211,164)	(211,164)	(211,164)	-	-	
3990 P.S. - BAM Analyst Adjustment							
8000 General Fund	-	(1,007)	(1,007)	(1,007)	-	748,993	

BDV104 – Biennial Budget Summary

This report replaces the old Summary of Biennial Budget spreadsheet that agencies were required to submit with their Agency Request Budget. It is a summarized listing of the current Base Budget, Essential Packages, Current Service Level Budget, Policy Packages and Agency Request Budget. It is intended to be used by Agencies and BAM Analyst during the Agency Request Budget phase.

Selection Criteria	<ul style="list-style-type: none"> • Version • Cross Reference
Level(s) of Reporting	<ul style="list-style-type: none"> • Cross Reference
Columns	<ul style="list-style-type: none"> • Positions • FTE • All Funds Total • Summary Fund Group 2 columns (Fund Types, with a break out of NonLimited for Federal and Other Funds)
Table(s)	<ul style="list-style-type: none"> • Budget (budget) • Merits Table

Summary of 2013-15 Biennium Budget									
Administrative Svcs, Dept of Chief Financial Office 2013-15 Biennium							Agency Working Cross Reference Number: 10700-035-00-00-00000		
Description	Positions	Full-Time Equivalent (FTE)	ALL FUNDS	General Fund	Lottery Funds	Other Funds	Federal Funds	Nonlimited Other Funds	Nonlimited Federal Funds
2011-13 Leg Adopted Budget	117	116.25	31,765,515	-	-	31,765,515	-	-	-
2011-13 Emergency Boards	-	-	(657,129)	-	-	(657,129)	-	-	-
2011-13 Leg Approved Budget	117	116.25	31,108,386	-	-	31,108,386	-	-	-
2013-15 Base Budget Adjustments									
Net Cost of Position Actions									
Administrative Biennialized E-Board, Phase-Out	(79)	(78.25)	(12,260,998)	-	-	(12,260,998)	-	-	-
Estimated Cost of Merit Increase	-	-	-	-	-	-	-	-	-
Base Debt Service Adjustment	-	-	-	-	-	-	-	-	-
Base Nonlimited Adjustment	-	-	-	-	-	-	-	-	-
Capital Construction	-	-	-	-	-	-	-	-	-
Subtotal 2013-15 Base Budget	38	38.00	18,847,388	-	-	18,847,388	-	-	-
Essential Packages									
010 - Non-PICS Pers Svc/Vacancy Factor									
Vacancy Factor (Increase)/Decrease	-	-	106,600	-	-	106,600	-	-	-
Non-PICS Personal Service Increase/(Decrease)	-	-	(575,437)	-	-	(575,437)	-	-	-
Subtotal	-	-	(468,837)	-	-	(468,837)	-	-	-
020 - Phase In / Out Pgm & One-time Cost									
021 - Phase-in									
021 - Phase-in	-	-	-	-	-	-	-	-	-
022 - Phase-out Pgm & One-time Costs									
022 - Phase-out Pgm & One-time Costs	-	-	-	-	-	-	-	-	-
Subtotal	-	-	-	-	-	-	-	-	-
030 - Inflation & Price List Adjustments									
Cost of Goods & Services Increase/(Decrease)	-	-	350,935	-	-	350,935	-	-	-
State Gov't & Services Charges Increase/(Decrease)	-	-	998,954	-	-	998,954	-	-	-
<div style="display: flex; justify-content: space-between;"> 04/24/14 11:19 AM Page 1 of 4 BDV104 - Biennial Budget Summary BDV104 </div>									

BDV110 – Program Unit Summary by Appropriated Fund

This report is intended to be used by Agencies during the development of their budget. This report shows a summary of Expenditures by Appropriated Fund of all Summary reporting levels within an agency.

Selection Criteria	<ul style="list-style-type: none"> Version
Level(s) of Reporting	<ul style="list-style-type: none"> Agencywide
Columns	<ul style="list-style-type: none"> Prior Biennium Actuals Legislatively Adopted Budget Emergency Boards Legislatively Approved Budget Column 34 based on the Version selected (ie: if A01 is selected it will display the Agency Request Budget)
Table(s)	<ul style="list-style-type: none"> Budget (budget)

Administrative Svcs, Dept of		Agency Number: 10700				
2013-15 Biennium						
Summary Cross Reference Number	Cross Reference Description	2009-11 Actuals	2011-13 Leg Adopted Budget	2011-13 Emergency Boards	2011-13 Leg Approved Budget	2013-15 Agency Request Budget
030-00-00-00000	Chief Operating Office					
	8000 General Fund	240,918	272,059	-	272,059	282,073
	3400 Other Funds Ltd	4,390,402	7,114,930	(211,164)	6,903,766	8,060,601
	All Funds	4,631,320	7,386,989	(211,164)	7,175,825	8,342,674
	Authorized Positions	16	24	-	24	23
	Authorized FTE	16.00	24.00	-	24.00	23.00
035-00-00-00000	Chief Financial Office					
	4430 Lottery Funds Debt Svc Ltd	323,068	-	-	-	-
	3400 Other Funds Ltd	24,475,744	31,765,515	(657,129)	31,108,386	15,573,860
	3430 Other Funds Debt Svc Ltd	944,300	-	-	-	-
	All Funds	25,743,112	31,765,515	(657,129)	31,108,386	15,573,860
	Authorized Positions	96	117	-	117	41
	Authorized FTE	95.50	116.25	-	116.25	41.00
040-00-00-00000	Chief Information Office					
	3400 Other Funds Ltd	6,051,576	9,545,311	-	9,545,311	13,276,024
	3430 Other Funds Debt Svc Ltd	8,706,592	-	-	-	-
	All Funds	14,758,168	9,545,311	-	9,545,311	13,276,024
	Authorized Positions	19	16	-	16	22
	Authorized FTE	19.00	16.00	-	16.00	21.00
045-00-00-00000	Chief Human Resource Office					
	3400 Other Funds Ltd	24,571,615	22,665,846	-	22,665,846	50,211,155

BDV200 – Analyst/Appeal Report

This report is intended to be used by the BAM Analyst during the Analyst Recommendation phase of the process. Agencies will use this report when reconciling the Governor’s Budget to their Agency Request Budget. The report displays a summary of the Agency’s Budget at the point in time when the report is run, based on the Version 2 selection. For each package, the report will provide a comparison of what was requested and what was approved.

Selection Criteria	<ul style="list-style-type: none"> • Cross Reference Number • Version 1 • Version 2
Level(s) of Reporting	<ul style="list-style-type: none"> • Cross Reference
Columns	<ul style="list-style-type: none"> • Summary Fund Group 2 (This contains the Fund Types with a break out for Nonlimited OF or FF) • Total Funds • Positions • Full-Time Equivalent (FTE)
Table(s)	<ul style="list-style-type: none"> • Budget (budget)

<i>Administrative Svcs, Dept of</i>		<i>Governor's Printed Budget</i>						<i>Agency Number: 10700</i>	
BDV200 - Analyst/Appeal Report		Version G-01 Governor's Printed Budget						Cross Reference: 10700-035-00-00-00000	
2013-15 Biennium								Chief Financial Office	
Appendix A									
	General Fund	Lottery Funds	Other Funds	Federal Funds	Nonlimited Other Funds	Nonlimited Federal Funds	Total Funds	Positions	Full-Time Equivalent (FTE)
Package 117 Capital Planning									
<u>Package Description</u>									
<u>Analyst Recommendation</u> Recommended As Modified									
Agency Request Budget									
Revenues	-	-	1,140,458	-	-	-	1,140,458		
Personal Services	-	-	594,908	-	-	-	594,908		
Services & Supplies	-	-	545,550	-	-	-	545,550		
Ending Balance	-	-	-	-	-	-	-	2	2.00
Governor's Printed Budget									
Revenues	-	-	1,137,703	-	-	-	1,137,703		
Personal Services	-	-	592,153	-	-	-	592,153		
Services & Supplies	-	-	545,550	-	-	-	545,550		
Ending Balance	-	-	-	-	-	-	-	2	2.00
Difference									
Revenues	-	-	(2,755)	-	-	-	(2,755)		
Personal Services	-	-	(2,755)	-	-	-	(2,755)		
Services & Supplies	-	-	-	-	-	-	-		
Ending Balance	-	-	-	-	-	-	-	-	-

Budget Execution Reports

BEX001A – Budget to Actuals

Agencies will use this report during the execution of their budget. It displays Actuals from R*Stars at the ORBITS Cross Reference level. It will calculate a straight line projection based on the Actuals that are being recorded and the number of months that have passed in the biennium. The user has the option of having the report calculate on specific Categories based on their needs.

Selection Criteria	<ul style="list-style-type: none"> • Cross Reference Number • Include Encumbrances • Account Filter; Category or Account • Straight Line Adjustment Filter (Allows user to select the Categories to perform a Straight Line Projection on)
Level(s) of Reporting	<ul style="list-style-type: none"> • Cross Reference
Columns	<ul style="list-style-type: none"> • Actuals to Date from R*Stars • Calculation of Straight Line • Manual Adjustment • Biennial Projection (Column 1 + 2 + 3) • Legislatively Approved Budget • Column 5 minus Column 4
Table(s)	<ul style="list-style-type: none"> • Budget • Budget to Actuals

<i>Administrative Svcs, Dept of</i>						<i>Agency Number: 10700</i>	
BEX001A - Budget to Actuals						Accounting Close: March 2014	
2013-15 Biennium						Actuals Updated: April 20, 2014	
SW Audit & Budget Reporting						10700-035-03-00-00000	
<i>Description</i>	<i>Actuals-To-Date</i>	<i>Straight Line Adjustment</i>	<i>Manual Adjustment</i>	<i>Biennial Projection</i>	<i>Legislative Approved (LAB)</i>	<i>LAB minus Bien Projection</i>	
BEGINNING BALANCE							
0030 Beginning Balance Adjustment							
3400 Other Funds Ltd	-	-	-	-	378,515	378,515	
REVENUE CATEGORIES							
CHARGES FOR SERVICES							
0415 Admin and Service Charges							
3400 Other Funds Ltd	252,101	-	-	252,101	635,537	383,436	
TRANSFERS OUT							
2010 Transfer Out - Intrafund							
3400 Other Funds Ltd	(8,290)	-	-	(8,290)	(21,840)	(13,550)	
AVAILABLE REVENUES							
3400 Other Funds Ltd	243,811	-	-	243,811	992,212	748,401	
TOTAL AVAILABLE REVENUES	\$243,811	-	-	\$243,811	\$992,212	\$748,401	
EXPENDITURES							
PERSONAL SERVICES							
SALARIES & WAGES							
3110 Class/Unclass Sal. and Per Diem							
3400 Other Funds Ltd	206,372	343,953	-	550,325	564,628	14,303	
OTHER PAYROLL EXPENSES							
3210 Empl. Rel. Bd. Assessments							
3400 Other Funds Ltd	27	45	-	72	120	48	
3220 Public Employees Retire Cont							
3400 Other Funds Ltd	32,729	54,548	-	87,277	79,190	(8,087)	
04/24/14 11:55 AM	Page 1 of 5						BEX001A - Budget to Actuals BEX001A

BEX100 – Budget Execution Actions

Agencies will use this report during the execution of their budget. It displays the Legislatively Adopted Budget, all the actions that have impacted the budget during the biennial cycle and a final Legislatively Approved Budget. The Version that should be selected on this report is the M, N or R versions.

Selection Criteria	<ul style="list-style-type: none"> • Version • Cross Reference
Level(s) of Reporting	<ul style="list-style-type: none"> • Cross Reference
Columns	<ul style="list-style-type: none"> • Legislatively Adopted Budget • Administrative Actions • Emergency Boards • Special/Supplemental Sessions • Ways and Means Actions • Legislatively Approved Budget
Table(s)	<ul style="list-style-type: none"> • Budget • Budget to Actuals

<i>Administrative Svcs, Dept of</i>		<i>Agency Number 10700</i>				
BEX100		Version: M - 01 - Ebd, SS & Adm Act Entry				
2013-15 Biennium		Cross Referenc Number: 10700-040-02-00-00000				
IT Planning & Oversight						
<i>Description</i>	<i>2013-15 Agy. Leg. Adopted</i>	<i>Administrative Actions</i>	<i>Emergency Boards</i>	<i>Special / Supplemental Sessions</i>	<i>Ways and Means Actions</i>	<i>2013-15 Leg Approved Budget</i>
EXPENDITURES						
PERSONAL SERVICES						
SALARIES & WAGES						
3110 CLASS/UNCLASS SAL. AND PER DIEM						
3400 Other Funds Ltd	1,419,048	-	-	(58,159)	-	1,360,889
OTHER PAYROLL EXPENSES						
3210 EMPL. REL. BD. ASSESSMENTS						
3400 Other Funds Ltd	320	-	-	(40)	-	280
3220 PUBLIC EMPLOYEES' RETIRE CONT						
3400 Other Funds Ltd	208,176	-	-	(19,600)	-	188,576
3221 PENSION OBLIGATION BOND						
3400 Other Funds Ltd	56,884	-	-	(404)	-	56,480
3230 SOCIAL SECURITY TAXES						
3400 Other Funds Ltd	107,981	-	-	(10,221)	-	97,760
3250 WORKER'S COMP. ASSESS. (WCD)						
3400 Other Funds Ltd	472	-	-	(59)	-	413
3260 MASS TRANSIT TAX						
3400 Other Funds Ltd	8,890	-	-	(1,205)	-	7,685
3270 FLEXIBLE BENEFITS						
3400 Other Funds Ltd	244,224	-	-	(32,558)	-	211,666
OTHER PAYROLL EXPENSES						
3400 Other Funds Ltd	626,947	-	-	(64,087)	-	562,860
TOTAL OTHER PAYROLL EXPENSES	\$626,947	-	-	(\$64,087)	-	\$562,860
P.S. BUDGET ADJUSTMENTS						
04/24/14		Page 76 of 319			BEX100 - Budget Execution Actions	
12:06 PM					BEX100	

Budget Start-Up Reports

BSU002A – Cross Reference Report

This report lists all of the cross-reference numbers that appear in an agency. The report also indicates when a cross-reference number is 'Active' and able to accept data. This report shows which levels have been determined to be data entry and/or summary levels, as well as documenting the 'parent' or 'roll-to' for each cross-reference number. The Service Code column displays an I, C or N if the Cross-Reference number is used for Capital Improvements, Capital Construction or Non-Limited expenditures.

Selection Criteria	none
Level(s) of Reporting	<ul style="list-style-type: none"> Agencywide
Columns	<ul style="list-style-type: none"> Cross Reference Number Level Type; Summary or Detail Cross Reference Description Roll To / Parent Srvc Code Reporting Level (LVL) Active Indicator
Table(s)	<ul style="list-style-type: none"> Cross Reference Maintenance

State of Oregon							
Administrative Svcs, Dept of Cross Reference Report 2015-17 Biennium				Agency Number: 10700 BAM Analyst: Savarro, Janet Budget Coordinator: Warren, Lori - (503)378-3556 lori.a.warren@state.or.us			
Cross Reference Number	Level Type		Cross Reference Description	Roll To/Parent	Svc Code	Lvl	Active
	Sum- mary	Detail					
022-03-00-00000		A	Technology Support Center	022-00-00-00000		3	Yes
022-04-00-00000		A	Information Systems and Services	022-00-00-00000		3	Yes
022-05-00-00000		A	Accounting Misc Reconciliation	022-00-00-00000		3	Yes
022-06-00-00000		A	DAS Initiatives	022-00-00-00000		3	Yes
023-00-00-00000		B	Oregon Progress Board			2	Yes
023-01-00-00000		A	Oregon Progress Board	023-00-00-00000		3	Yes
023-02-00-00000		A	OPB - Population Survey	023-00-00-00000		3	Yes
025-00-00-00000		B	State Data Center			2	Yes
025-01-00-00000		A	State Data Center - Administration	025-00-00-00000		3	Yes
025-02-00-00000		A	State Data Center - Network	025-00-00-00000		3	Yes
025-03-00-00000		A	State Data Center - Storage	025-00-00-00000		3	Yes
025-04-00-00000		A	State Data Center - Mid-range	025-00-00-00000		3	Yes
025-05-00-00000		A	State Data Center - Distributed Systems	025-00-00-00000		3	Yes
025-06-00-00000		A	State Data Center - COP	025-00-00-00000		3	Yes
025-07-00-00000		A	State Data Center - Voice	025-00-00-00000		3	Yes
025-08-00-00000		A	State Data Center - Mainframe	025-00-00-00000		3	Yes
030-00-00-00000		B	Chief Operating Office			2	Yes
030-01-00-00000		A	Chief Operating Office	030-00-00-00000		3	Yes
030-02-00-00000		A	Statewide Initiatives	030-00-00-00000		3	Yes
030-03-00-00000		A	Internal Audit	030-00-00-00000		3	Yes
030-04-00-00000		A	OEA	030-00-00-00000		3	Yes

04/24/14
12:53 PM

Page 5 of 12

Cross Reference Report
BSU-002A

BSU003A – Cross Reference Listing & Packages

This report lists for an agency, all of the Packages that have been established by the SABRS Staff for use by an Agency in developing their budget. The report lists every package that is available to a cross-reference number.

Selection Criteria	<ul style="list-style-type: none"> • Version • Bud Cycle
Level(s) of Reporting	<ul style="list-style-type: none"> • Agencywide
Columns	<ul style="list-style-type: none"> • Cross Reference Number • Cross Reference Description • Package Number • Priority • Package Description • Package Group
Table(s)	<ul style="list-style-type: none"> • Packages (bud_chg_descr) • Package Assign (bud_chg_descr_assign_v3)

Administrative Svcs, Dept of					
Summary Cross Reference Listing and Packages					Agency Number: 10700
2013-15 Biennium					BAM Analyst: Savarro, Janet
					Budget Coordinator: Warren, Lori - (503)378-3556
Cross Reference Number	Cross Reference Description	Package Number	Priority	Package Description	Package Group
001-00-00-00000	Office of the Director	010	0	Non-PICS Psnl Svc / Vacancy Factor	Essential Packages
001-00-00-00000	Office of the Director	021	0	Phase-in	Essential Packages
001-00-00-00000	Office of the Director	022	0	Phase-out Pgm & One-time Costs	Essential Packages
001-00-00-00000	Office of the Director	031	0	Standard Inflation	Essential Packages
001-00-00-00000	Office of the Director	032	0	Above Standard Inflation	Essential Packages
001-00-00-00000	Office of the Director	033	0	Exceptional Inflation	Essential Packages
001-00-00-00000	Office of the Director	050	0	Fundshifts	Essential Packages
001-00-00-00000	Office of the Director	060	0	Technical Adjustments	Essential Packages
001-00-00-00000	Office of the Director	070	0	Revenue Shortfalls	Policy Packages
001-00-00-00000	Office of the Director	082	0	September 2012 E-Board	Policy Packages
001-00-00-00000	Office of the Director	083	0	December 2012 E-Board	Policy Packages
001-00-00-00000	Office of the Director	090	0	Analyst Adjustments	Policy Packages
002-00-00-00000	Budget and Management Division	010	0	Non-PICS Psnl Svc / Vacancy Factor	Essential Packages
002-00-00-00000	Budget and Management Division	021	0	Phase-in	Essential Packages
002-00-00-00000	Budget and Management Division	022	0	Phase-out Pgm & One-time Costs	Essential Packages
002-00-00-00000	Budget and Management Division	031	0	Standard Inflation	Essential Packages
002-00-00-00000	Budget and Management Division	032	0	Above Standard Inflation	Essential Packages
002-00-00-00000	Budget and Management Division	033	0	Exceptional Inflation	Essential Packages
002-00-00-00000	Budget and Management Division	050	0	Fundshifts	Essential Packages
002-00-00-00000	Budget and Management Division	060	0	Technical Adjustments	Essential Packages
002-00-00-00000	Budget and Management Division	070	0	Revenue Shortfalls	Policy Packages
002-00-00-00000	Budget and Management Division	082	0	September 2012 E-Board	Policy Packages

04/24/14
12:57 PM

Page 1 of 22

Summary Cross Reference Listing and Packages
BSU-003A

BSU004A – Policy Package List by Priority

This report lists policy packages that are available for an agency to use and the summary cross-reference number to which each package has been assigned.

Selection Criteria	<ul style="list-style-type: none"> • Version
Level(s) of Reporting	<ul style="list-style-type: none"> • Agencywide
Columns	<ul style="list-style-type: none"> • Package Priority • Package Number • Package Description • Summary Cross Reference Number • Cross Reference Description
Table(s)	<ul style="list-style-type: none"> • Package (bud_chg_descr) • Package Assign (bud_chg_descr_assign_v3)

<i>Administrative Svcs, Dept of</i>				
Policy Package List by Priority 2013-15 Biennium			Agency Number: 10700 BAM Analyst: Savarro, Janet Budget Coordinator: Warren, Lori - (503)378-3556	
<i>Priority</i>	<i>Policy Pkg Number</i>	<i>Policy Pkg Description</i>	<i>Summary Cross Reference Number</i>	<i>Cross Reference Description</i>
0	106	ETS - Equipment Lifecycle Replacement	055-00-00-00000	Enterprise Technology Services
	107	ETS - Support IT Infrastructure Growth	055-00-00-00000	Enterprise Technology Services
	108	ETS - Leverage Technology	055-00-00-00000	Enterprise Technology Services
	109	ETS - Security	055-00-00-00000	Enterprise Technology Services
	110	ETS - eGov Admin Support	055-00-00-00000	Enterprise Technology Services
	111	ETS - Agency Companion POP	055-00-00-00000	Enterprise Technology Services
	112	ETS - CIO Support	055-00-00-00000	Enterprise Technology Services
	113	EAM - Fleet Vehicle Purchase	060-00-00-00000	Enterprise Asset Management
	114	EAM - Surplus Staffing	060-00-00-00000	Enterprise Asset Management
	115	Procurement Services Strategic Sourcing Te	065-00-00-00000	Enterprise Goods & Services
	116	Supreme Court Building Renovation	060-00-00-00000	Enterprise Asset Management
	117	Capital Planning	035-00-00-00000	Chief Financial Office
	118	Oregon Government Ethics Commission	099-00-00-00000	Special Governmental Payments
	489	Capital Construction Projects	089-00-00-00000	Capital Construction

BSU006 – Cross Reference Outcome Report

This report is similar to the BSU002A report. Along with the Cross Reference Number, Description and Level Type, it also displays the Governor’s Outcome Area where the cross reference number was assigned.

Selection Criteria	<ul style="list-style-type: none"> Version
Level(s) of Reporting	<ul style="list-style-type: none"> Agencywide
Columns	<ul style="list-style-type: none"> Cross Reference Number Level Type; Summary or Detail Cross Reference Description Primary Outcome Secondary Outcome Tertiary Outcome
Table(s)	<ul style="list-style-type: none"> Cross Reference Maintenance (rptng_lvl) Outcomes

BSU006 - Cross Reference Outcome Report			Agency Number: 10700			
Enterprise Security 10700-040-03-00-00000 2013-15 Biennium			BAM Analyst: Savarro, Janet Budget Coordinator Warren, Lori-(503)378-3556 lori.a.warren@state.or.us			
Cross Reference Number	Level Type		Cross Reference Description	Primary Outcome	Secondary Outcome	Tertiary Outcome
	Sum-	Detail				
marv						
040-03-00-00000	A		Enterprise Security	Improving Government		
040-04-00-00000	A		Geospatial Enterprise Office	Improving Government		
040-05-00-00000	A		Statewide Interoperability Program	Improving Government		
040-06-00-00000	A		Strategic Technology Office	Improving Government		
045-00-00-00000	B		Chief Human Resource Office	Improving Government		
045-01-00-00000	A		Administration	Improving Government		
045-02-00-00000	A		HR Policy	Improving Government		
045-03-00-00000	A		Executive Recruitment	Improving Government		
045-04-00-00000	A		Class & Compensation	Improving Government		
045-05-00-00000	A		Workforce Development	Improving Government		
045-06-00-00000	A		Labor Relations	Improving Government		
045-07-00-00000	A		HRIS Replacement	Improving Government		
055-00-00-00000	B		Enterprise Technology Services	Improving Government		
055-01-00-00000	A		Administration	Improving Government		
055-02-00-00000	A		Plans & Controls	Improving Government		
055-03-00-00000	A		Service Solutions	Improving Government		
055-04-00-00000	A		Engineering	Improving Government		
055-05-00-00000	A		Service Delivery	Improving Government		
055-06-00-00000	A		Technology Availability Management	Improving Government		
055-07-00-00000	A		Application Delivery	Improving Government		
060-00-00-00000	B		Enterprise Asset Management	Improving Government		
060-01-00-00000	A		Administration	Improving Government		
060-02-00-00000	A		Planning & Construction Management	Improving Government		

Statewide Queries

STW007 – Statewide Query

The Statewide Query reports allows the user more flexibility when running a report. The user may pick and choose the Cross Reference, Accounts, Funds or Columns they would like to run the report for.

Selection Criteria	<ul style="list-style-type: none"> • Level Tab <ul style="list-style-type: none"> ○ Agency ○ Cross Reference ○ Available & Assigned List Boxes • Category <ul style="list-style-type: none"> ○ Subtotals by Category Group, Sub Category & Account ○ Available & Assigned List Boxes • Funds <ul style="list-style-type: none"> ○ Fund Selection ○ Fund Checkbox • Columns <ul style="list-style-type: none"> ○ Table = Budget ○ Version ○ Column
Level(s) of Reporting	<ul style="list-style-type: none"> • Cross Reference
Columns	<ul style="list-style-type: none"> • Prints based on the selections made in the Selection Criteria window.
Table(s)	<ul style="list-style-type: none"> • Budget

<i>Statewide Query</i>						Adds/Non-Adds: ALL
2015-17 Biennium Administration 10700 Administrative Svcs, Dept of						10700-030-03-00-00000
						Internal Audit
Description	A-01 2011-13 Actuals	A-01 2013-15 Leg Adopted Budget	A-01 2013-15 Emergency Boards	A-01 2013-15 Leg Approved Budget	A-01 2015-17 Base Budget	
BEGINNING BALANCE						
0025 Beginning Balance						
3400 Other Funds Ltd	(1,093,393)	(54,080)	-	(54,080)	-	
0030 Beginning Balance Adjustment						
3400 Other Funds Ltd	-	(8,850)	-	(8,850)	-	
BEGINNING BALANCE						
3400 Other Funds Ltd	(1,093,393)	(62,930)	-	(62,930)	-	
TOTAL BEGINNING BALANCE	(\$1,093,393)	(\$62,930)	-	(\$62,930)	-	
REVENUE CATEGORIES						
CHARGES FOR SERVICES						
0415 Admin and Service Charges						
3400 Other Funds Ltd	163,176	338,774	-	338,774	338,774	
TRANSFERS OUT						
2010 Transfer Out - Intrafund						
3400 Other Funds Ltd	(31,968)	(19,612)	-	(19,612)	(19,612)	
AVAILABLE REVENUES						
3400 Other Funds Ltd	(962,185)	256,232	-	256,232	319,162	
TOTAL AVAILABLE REVENUES	(\$962,185)	\$256,232	-	\$256,232	\$319,162	
EXPENDITURES						
PERSONAL SERVICES						
SALARIES & WAGES						
3110 Class/Unclass Sal. and Per Diem						
3400 Other Funds Ltd	103,054	127,296	4,027	131,323	-	
04/24/14 1:30 PM						
Page 1 of 5						
Statewide Query STW007						

STW009 – Statewide Package Query

The Statewide Package Query reports is similar to the Statewide Query report, it allows the user more flexibility when running a report. The user may pick and choose the Cross Reference, Accounts, Funds or Packages they would like to run the report for.

Selection Criteria	<ul style="list-style-type: none"> • Level Tab <ul style="list-style-type: none"> ○ Agency ○ Cross Reference ○ Available & Assigned List Boxes • Category <ul style="list-style-type: none"> ○ Subtotals by Category Group, Sub Category & Account ○ Available & Assigned List Boxes • Funds <ul style="list-style-type: none"> ○ Fund Selection ○ Fund Checkbox • Packages <ul style="list-style-type: none"> ○ Package Group ○ Package Type ○ Package Number
Level(s) of Reporting	<ul style="list-style-type: none"> • Cross Reference
Columns	<ul style="list-style-type: none"> • Prints Package Numbers based on the selections made.
Table(s)	<ul style="list-style-type: none"> • Budget

Statewide Package		Version: Agency Working				
2013-15 Biennium		Adds/Non-Adds: ALL				
Administration		10700-035-04-00-00000				
10700 Administrative Svcs, Dept of		Capitol Planning & Finance				
Description	Total	Pkg: POL 102 Facilities Assessment & Planning Software Priority: 00	Pkg: POL 117 Capital Planning Priority: 00	Pkg: POL 081 May 2012 E-Board Priority: 00		
3260 Mass Transit Tax						
3400 Other Funds Ltd	2,505	-	2,505	-		
3270 Flexible Benefits						
3400 Other Funds Ltd	61,056	-	61,056	-		
OTHER PAYROLL EXPENSES						
3400 Other Funds Ltd	177,476	-	177,476	-		
TOTAL OTHER PAYROLL EXPENSES	\$177,476	-	\$177,476	-		
P.S. BUDGET ADJUSTMENTS						
3470 Undistributed (P.S.)						
3400 Other Funds Ltd	242,858	-	-	242,858		
PERSONAL SERVICES						
3400 Other Funds Ltd	837,766	-	594,908	242,858		
TOTAL PERSONAL SERVICES	\$837,766	-	\$594,908	\$242,858		
SERVICES & SUPPLIES						
4100 Instate Travel						
3400 Other Funds Ltd	1,350	-	1,350	-		
4150 Employee Training						
3400 Other Funds Ltd	7,000	-	7,000	-		
4175 Office Expenses						
3400 Other Funds Ltd	4,000	-	4,000	-		
4200 Telecommunications						
3400 Other Funds Ltd	3,000	-	3,000	-		
4225 State Gov. Service Charges						
3400 Other Funds Ltd	6,350	-	6,350	-		
4250 Data Processing						
3400 Other Funds Ltd	1,300	-	1,300	-		
4275 Publicity and Publications						

STW011 – Statewide Comparison

The Statewide Comparison is similar to the other Statewide Queries but will allow the user to select two versions and columns to run a comparison against.

Selection Criteria	<ul style="list-style-type: none"> • Level Tab <ul style="list-style-type: none"> ○ Agency ○ Cross Reference ○ Available & Assigned List Boxes • Category <ul style="list-style-type: none"> ○ Subtotals by Category Group, Sub Category & Account ○ Available & Assigned List Boxes • Funds <ul style="list-style-type: none"> ○ Fund Selection ○ Fund Checkbox • Columns <ul style="list-style-type: none"> ○ Table = Budget ○ Version ○ Column ○ Show Variance Only
Level(s) of Reporting	<ul style="list-style-type: none"> • Cross Reference
Columns	<ul style="list-style-type: none"> • Displays the two selected columns • Column 1 minus column 2 • % Change from Column 1 to Column 2
Table(s)	<ul style="list-style-type: none"> • Budget

Statewide Comparison				
2015-17 Biennium Administration 10700 Administrative Svcs, Dept of			Adds/Non-Adds:ALL 10700.000.00.00.00000 Administrative Svcs, Dept of	
Description	A-01 2013-15 Leg Approved Budget	A-01 2015-17 Base Budget	Column 2 Minus Column 1	% Change from Column 1 to Column 2
	Column 1	Column 2		
0605 Interest Income				
4400 Lottery Funds Ltd	1,473,399	1,473,399	-	0.00%
4430 Lottery Funds Debt Svc Ltd	960,565	960,565	-	0.00%
3200 Other Funds Non-Ltd	4,330,277	4,330,277	-	0.00%
3400 Other Funds Ltd	1,654,217	1,654,217	-	0.00%
All Funds	8,418,458	8,418,458	-	0.00%
SALES INCOME				
0705 Sales Income				
3400 Other Funds Ltd	6,511,597	6,511,597	-	0.00%
OTHER				
0975 Other Revenues				
3400 Other Funds Ltd	34,273,066	34,273,066	-	0.00%
3430 Other Funds Debt Svc Ltd	145,627,524	145,627,524	-	0.00%
All Funds	179,900,590	179,900,590	-	0.00%
FEDERAL FUNDS REVENUE				
0995 Federal Funds				
6400 Federal Funds Ltd	331,535,719	331,535,719	-	0.00%
TRANSFERS IN				
1010 Transfer In - Intrafund				
4400 Lottery Funds Ltd	351,462,755	351,462,755	-	0.00%
4430 Lottery Funds Debt Svc Ltd	9,504,475	9,504,475	-	0.00%
3010 Other Funds Cap Improvement	5,992,008	5,992,008	-	0.00%
3020 Other Funds Cap Construction	17,521,286	17,521,286	-	0.00%
3400 Other Funds Ltd	77,506,595	77,506,595	-	0.00%

04/24/14
1:50 PM

Page 4 of 320

Statewide Comparison
STW011

EXTRACTS

EX5_B – Version Extract

The purpose of this extract is to give users a starting point by data analysis. Data is extracted into excel at which point the spreadsheet can then be formatted and re-keying of data is unnecessary.

Selection Criteria	<ul style="list-style-type: none"> Agency Number
Level(s) of Reporting	<ul style="list-style-type: none"> Cross Reference
Columns	<ul style="list-style-type: none"> All columns – 1 through 38 are extracted
Data Elements	<ul style="list-style-type: none"> Cross Reference Number Cross Reference Description Account Type Account Number Account Type Description Appropriated Fund Appropriated Fund Description
Table(s)	<ul style="list-style-type: none"> Budget (budget)

The screenshot shows a Microsoft Excel spreadsheet with the following data:

	A	B	C	D	E	F	G
1	acctng_cost_ctr	rptng_lvl_descr	obj_type	obj_no	obj_type_descr	fund_no	fund_descr
2	Cross Reference Number	Reporting Level Descr	Account Type	Account	Account Type Descr	Fund	Fund Descr
3	10700-088-01-00-00000	Capital Improvements	B	25	Beginning Balance	3010	Other Funds Cap Improvement
4	10700-089-01-00-00000	Capital Construction Programs	B	25	Beginning Balance	3020	Other Funds Cap Construction
5	10700-009-06-00-00000	Federal Surplus Property	B	25	Beginning Balance	3200	Other Funds Non-Ltd
6	10700-013-01-00-00000	Risk Management Administration	B	25	Beginning Balance	3200	Other Funds Non-Ltd
7	10700-004-12-00-00000	STEPS	B	25	Beginning Balance	3200	Other Funds Non-Ltd
8	10700-003-01-00-00000	State Controllers	B	25	Beginning Balance	3200	Other Funds Non-Ltd
9	10700-009-07-00-00000	Publishing and Distribution	B	25	Beginning Balance	3200	Other Funds Non-Ltd
10	10700-090-03-00-00000	Transit District Payments	B	25	Beginning Balance	3200	Other Funds Non-Ltd
11	10700-009-01-00-00000	Purchasing Section	B	25	Beginning Balance	3200	Other Funds Non-Ltd
12	10700-011-05-00-00000	Parking	B	25	Beginning Balance	3200	Other Funds Non-Ltd
13	10700-011-03-00-00000	Operations and Maintenance	B	25	Beginning Balance	3200	Other Funds Non-Ltd
14	10700-004-04-00-00000	Strategic Planning and Review	B	25	Beginning Balance	3200	Other Funds Non-Ltd
15	10700-004-11-00-00000	Enterprise Network Services	B	25	Beginning Balance	3200	Other Funds Non-Ltd
16	10700-005-01-00-00000	PEBB Administration	B	25	Beginning Balance	3200	Other Funds Non-Ltd
17	10700-006-01-00-00000	General Program	B	25	Beginning Balance	3200	Other Funds Non-Ltd
18	10700-002-01-00-00000	Budget and Management Division	B	25	Beginning Balance	3200	Other Funds Non-Ltd
19	10700-003-01-00-00000	State Controllers	B	25	Beginning Balance	3230	Other Funds Debt Svc Non-Ltd
20	10700-011-03-00-00000	Operations and Maintenance	B	25	Beginning Balance	3230	Other Funds Debt Svc Non-Ltd
21	10700-002-01-00-00000	Budget and Management Division	B	25	Beginning Balance	3230	Other Funds Debt Svc Non-Ltd
22	10700-011-05-00-00000	Parking	B	25	Beginning Balance	3230	Other Funds Debt Svc Non-Ltd
23	10700-011-03-00-00000	Operations and Maintenance	B	25	Beginning Balance	3400	Other Funds Ltd
24	10700-093-01-00-00000	Health Care Trust Fund	B	25	Beginning Balance	3400	Other Funds Ltd
25	10700-011-06-00-00000	Project Management	B	25	Beginning Balance	3400	Other Funds Ltd
26	10700-004-01-00-00000	Chief Information Office	B	25	Beginning Balance	3400	Other Funds Ltd
27	10700-002-01-00-00000	Budget and Management Division	B	25	Beginning Balance	3400	Other Funds Ltd
28	10700-099-02-00-00000	Oregon Opportunity Fund	B	25	Beginning Balance	3400	Other Funds Ltd
29	10700-091-01-00-00000	Medicaid Upper Payment Limit	B	25	Beginning Balance	3400	Other Funds Ltd
30	10700-009-01-00-00000	Purchasing Section	B	25	Beginning Balance	3400	Other Funds Ltd
31	10700-021-01-00-00000	Arrest and Return	B	25	Beginning Balance	3400	Other Funds Ltd
32	10700-022-01-00-00000	Operations Division	B	25	Beginning Balance	3400	Other Funds Ltd