

# Oregon Design Criteria Hub

The Oregon Design Criteria Hub is an interactive mapping tool that provides site-specific climatic and geographic design criteria for construction projects permitted using the **Oregon Residential Specialty Code (ORSC)**.

This includes all of the following:

- **Ground snow load**
- **Basic design wind speed**
- **Seismic Design Category**
- **Weathering potential**
- **Frost line depth**
- **Decay potential**
- **Air freezing index**



A feasibility study is currently being conducted for potential future Oregon Structural Specialty Code application of the tool. The tool is being developed by Oregon State University’s (OSU) Oregon Explorer Program, which is a collaboration among OSU Libraries and Press (OSULP) and the Institute for Natural Resources (INR) at OSU.

The first step is for the user to select the report type under “*Select Report Type*” and identify a location by one of the three methods listed (See Figure 1).

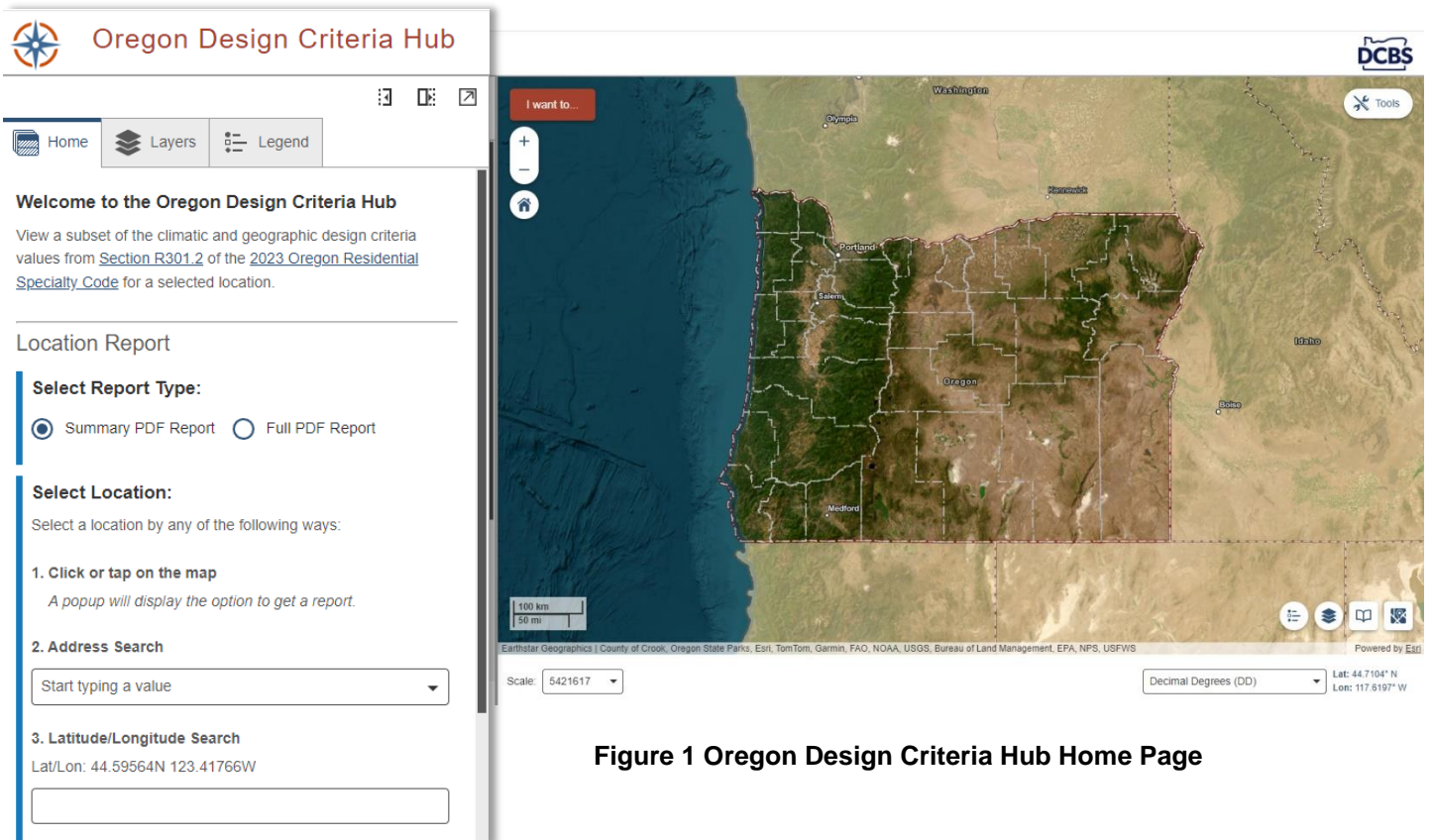


Figure 1 Oregon Design Criteria Hub Home Page

After a report type and location is selected by the user, the tool automatically generates the site-specific climatic and geographic design criteria output per Table R301.2 of the ORSC. The user can view the “Overview” (See Figure 2), click on any of the specific design criteria tabs, associated map layers, info notes, etc. to see more details on each specific output, or click “PDF Report” to get a printable or downloadable four-page detailed report or a one-page summary report (See Figure 3).

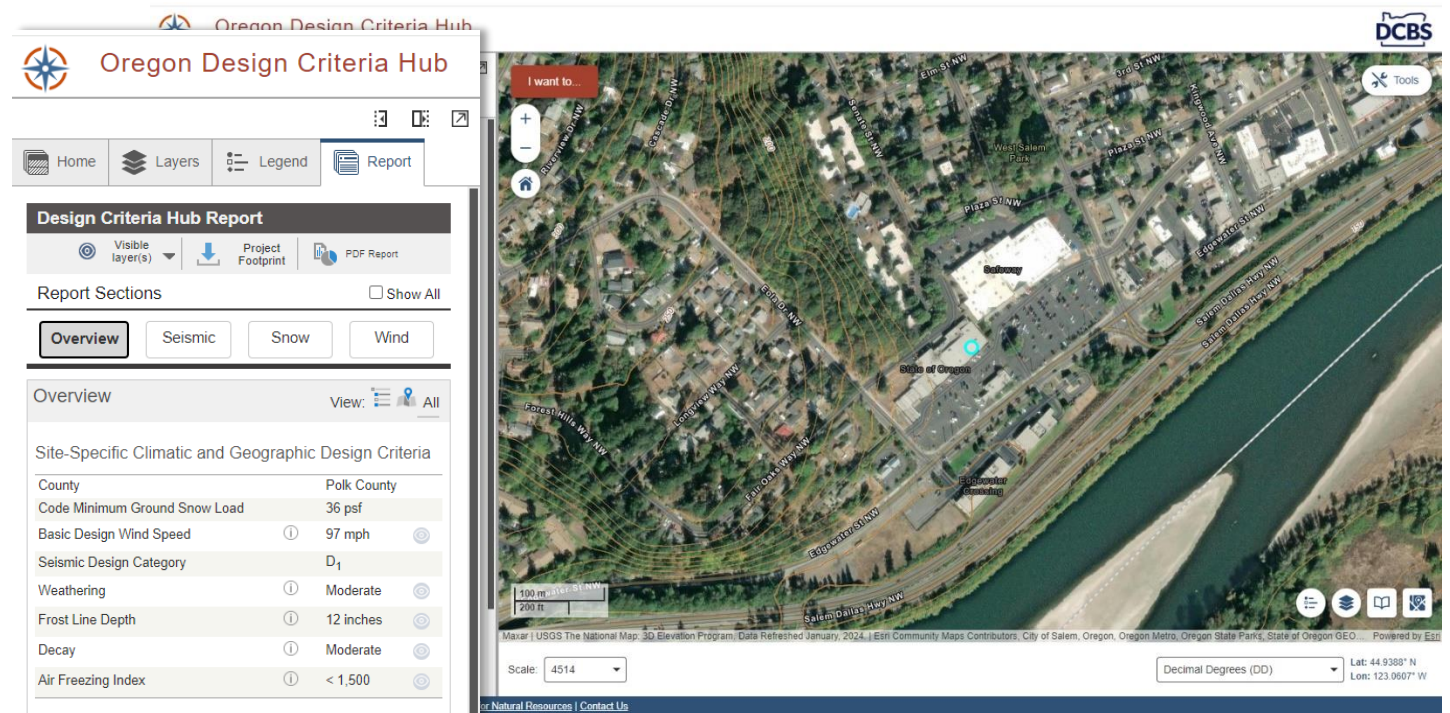


Figure 2 Oregon Design Criteria Hub Report Overview

Figure 3 Oregon Design Criteria Hub Summary Report

### Site-Specific Climatic and Geographic Design Criteria

County	Polk County
Code Minimum Ground Snow Load	36 psf
Basic Design Wind Speed	97 mph
Seismic Design Category	D <sub>1</sub>
Weathering	Moderate
Frost Line Depth	12 inches
Decay	Moderate
Air Freezing Index	< 1,500

See [Section R301.2](#) of the 2023 [Oregon Residential Specialty Code](#) for more information.

#### Site-Specific Climatic and Geographic Design Criteria

County	Polk County
Code Minimum Ground Snow Load	36 psf
Basic Design Wind Speed	97 mph
Seismic Design Category	D <sub>1</sub>
Weathering	Moderate
Frost Line Depth	12 inches
Decay	Moderate
Air Freezing Index	< 1,500

See [Section R301.2](#) of the 2023 [Oregon Residential Specialty Code](#) for more information.

1

Report generated: March 11, 2024 04:01 PM

1

Report generated: March 11, 2024 04:01 PM