



# Traditional Health Workers

*Current Implementation and  
a Vision for the Future*

Changing healthcare  
to work for you.

Created for the Traditional Health  
Worker Commission  
February 27, 2017



# Traditional Health Worker Commission Presentation Overview

- Appreciation for the Opportunity to Share Today
- Who is AllCare Health?
- Current Internal Use of THWs
- Current Regional Use of THWs
- A Vision for the Future
- Questions?





# Susan Fischer, M.Ed.

## Health and Education Integration Coordinator

[susan.fischer@allcarehealth.com](mailto:susan.fischer@allcarehealth.com)

- Background: Educator, home visitor, system coordinator.
- Member of the AllCare Health's Community Engagement and Investment Team
- Partner, Mother, Daughter, and Community Member





# Who is AllCare Health?



Our Mission: Working together to provide quality, cost-effective health care for our communities.

We're changing healthcare to work for the communities we are serving.

# Who is AllCare Health?



We believe in Community.

We live here.

We believe in helping.

We believe in compassionate care.

We believe in forward thinking.

# Current Internal Use of THWs

## An Essential Part of Our Care Coordination Teams

- Currently have 6 Community Health Workers on Staff
  - 2 Based in Jackson County
  - 3 Based in Josephine County
  - 1 Based in Curry County
- Care Coordination Team Structure
  - Team Lead, ICM, TOC, CHW
  - Supported by Medical Directors and Others





# Diana Cooper

## Lived Experience, Local Dedication

- Community Health Worker focusing on Jackson County
- Born and raised in Brookings, OR
- Embodying the Power of Lived Experience
- Assisting with Barriers, Encouraging Growth
- Meeting Clients Where They're At
- Seeing Clients Become Their Own Advocates
- The Challenge of Affordable Housing
- Diana's Magic Wand Wish



# Current External Use of THWs

## An Essential Part of Our Community Services

- Listening to Local Needs and Readiness
- Investing in Other Critical Partners
  - *Southern Oregon Head Start*  
Serving Jackson and Josephine Counties
  - *Josephine County Public Health*  
Serving at DHS SSP, Goodwill, and UCAN
  - *Curry Community Health*  
Serving at the Brookings Harbor School District





# Current External Use of THWs

## An Essential Part of Our Community Services

- Rogue Community College Training Program
- Continuous Quality Improvement
- Gathering Qualitative and Quantitative Data
- Letting the Clients Guide Our Work

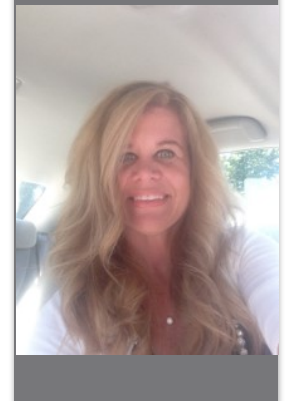
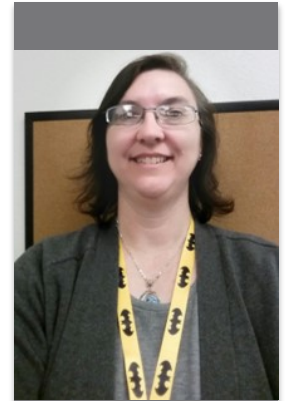




# Heather Ackerman, Serving Elementary Schools

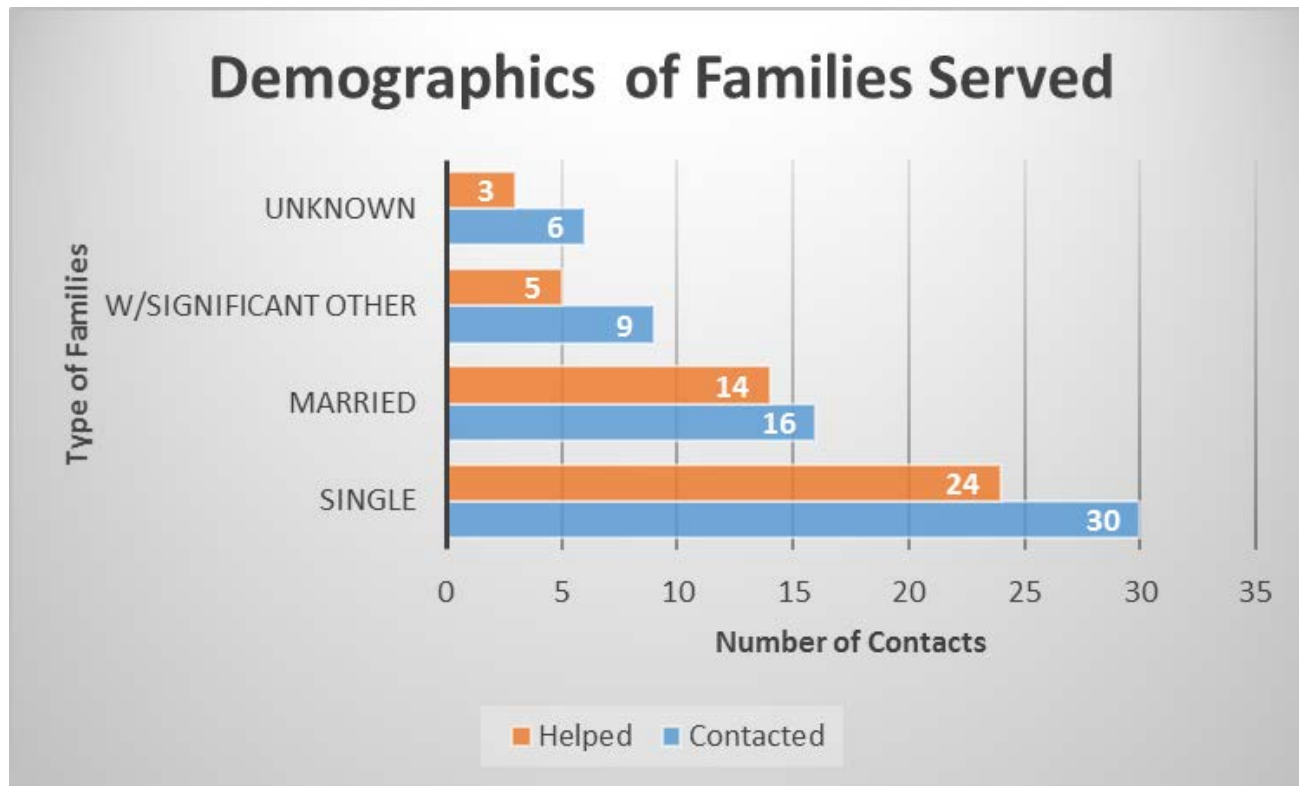
# Lisa Harris, Serving DHS SSP, Goodwill, & UCAN

- Who are Heather and Lisa?
- Employed through Josephine County Public Health
- Deployed to Distinct Locations, but truly a TEAM
- Hired prior to CHW Training
- Periodic Meetings with Site Supervisors to Make Course Corrections



# What their work looks like.

## 4Q2016



Total number of contacts: 61

Total helped: 46

Success rate: 75.4%



# Kerri Ann Young

Siskiyou Pediatrics Clinic, L.L.P.



- Local Clinics and Providers are Using THWs
- Who is Kerri Ann?
- Addressing Barriers, Attending Appointments, Being a Bridge
- “I can’t believe a position like yours exists...”
- “Even a CHW can’t make it rain in a drought...”
- Kerri Ann’s Magic Wand Wish

# A Vision for the Future

## Internal and External Expansion & Strengthening

- Continued Funding of Current Pilots and Project
- Support of Similar Positions in the Community
- Education about and Promotion of Positions
- Exploration of Models for Sustainable Funding
- Support of THW PLCs and Professional Development
- Questions?





Questions?