

Farms Under Threat 2040: Localized impacts in Oregon

Oregon Board of Agriculture

January 17, 2024

Dani Madrone

Pacific Northwest Policy Manager



American Farmland Trust

SAVING THE LAND THAT SUSTAINS US

FUT 2040

Partnership with USDA's NRCS, Conservation Science Partners, and University of Wisconsin-Madison.

Projects future development based on historic patterns (2001 to 2016).

Tool for determining risk and response under scenarios of "business as usual," "runaway sprawl," and "better built cities."

Call to action for farmland preservation and compact urban growth.



Released July 2022

Report and interactive map: <https://farmland.org/project/farms-under-threat/>

Webinar on YouTube

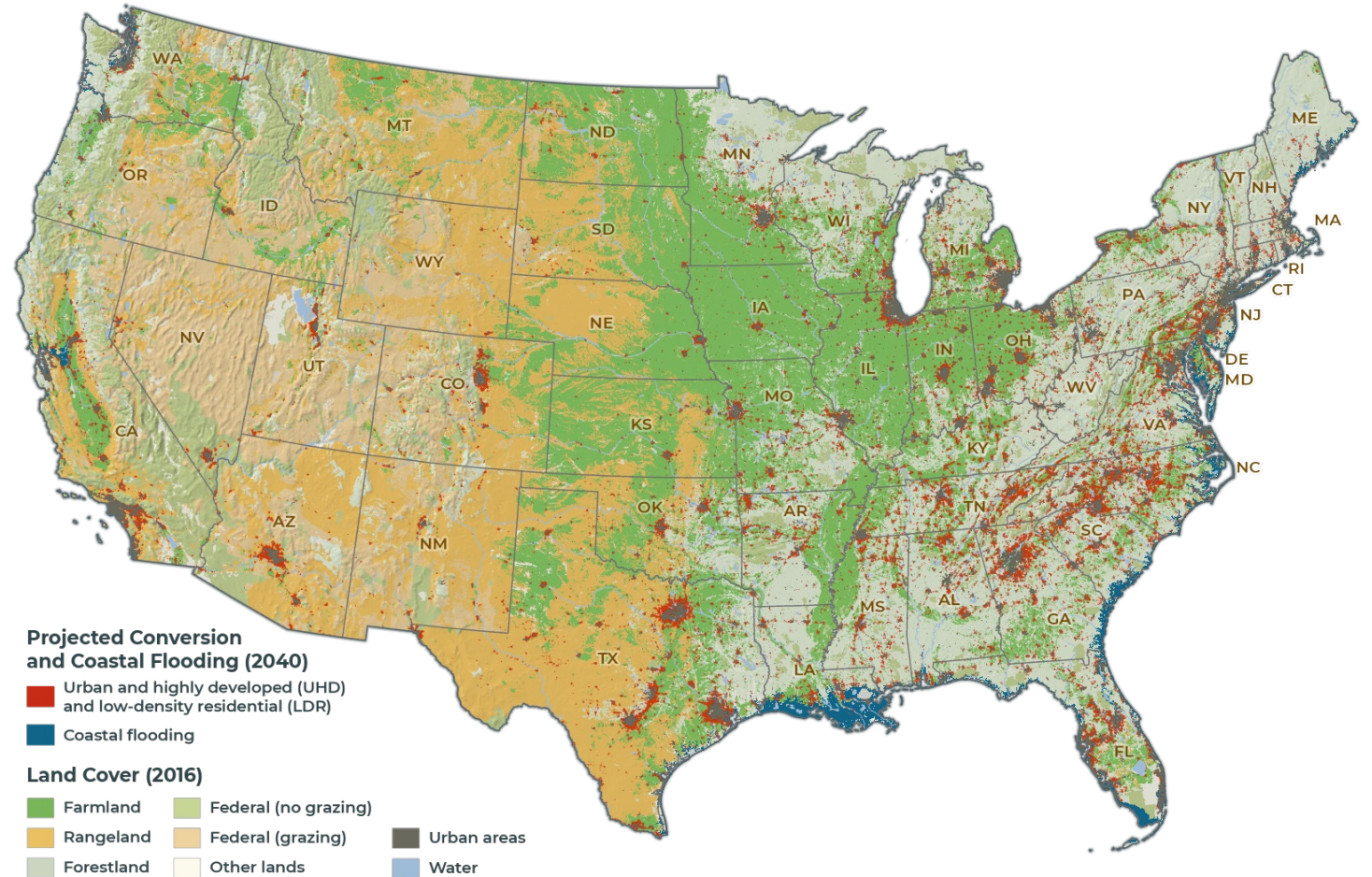
UHD and LDR



Across the nation

Oregon ranks lowest in the nation for the threat of conversion, with the highest policy response.

However, the statewide land use planning system still results in farmland loss every year.

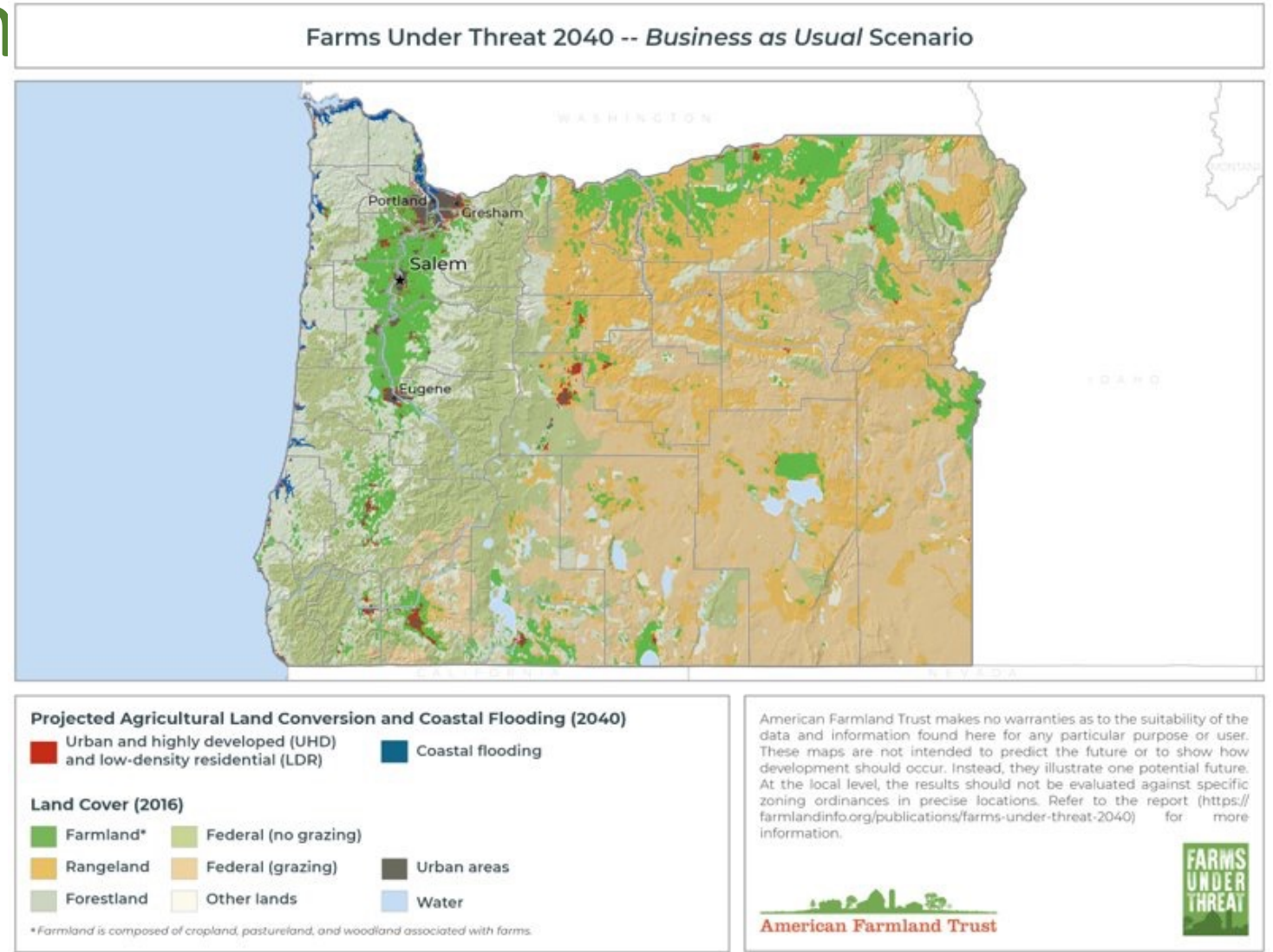


Impacts in Oregon

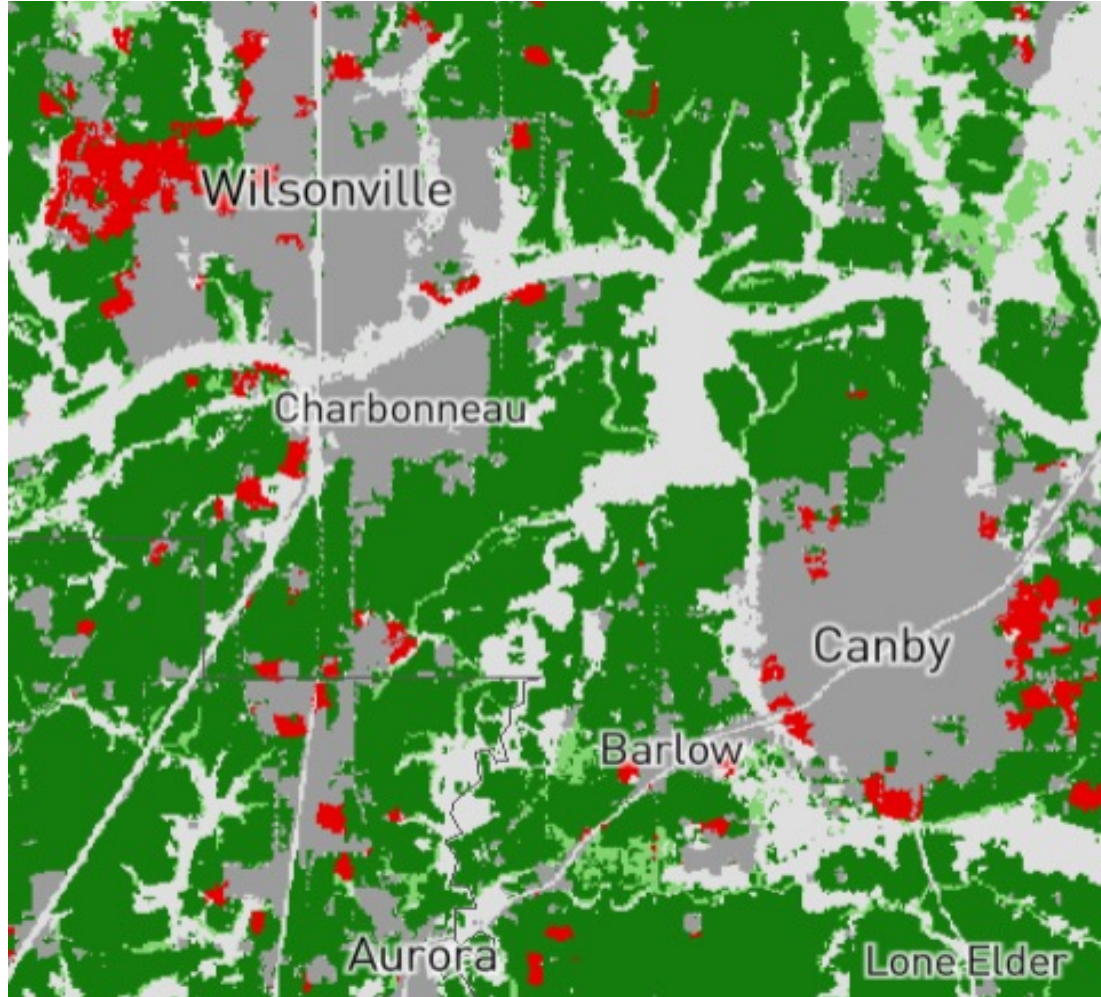
In the Oregon, the loss of farmland is highly localized.

Between 2001 and 2016, Oregon lost 65,800 acres to UHD and LDR.

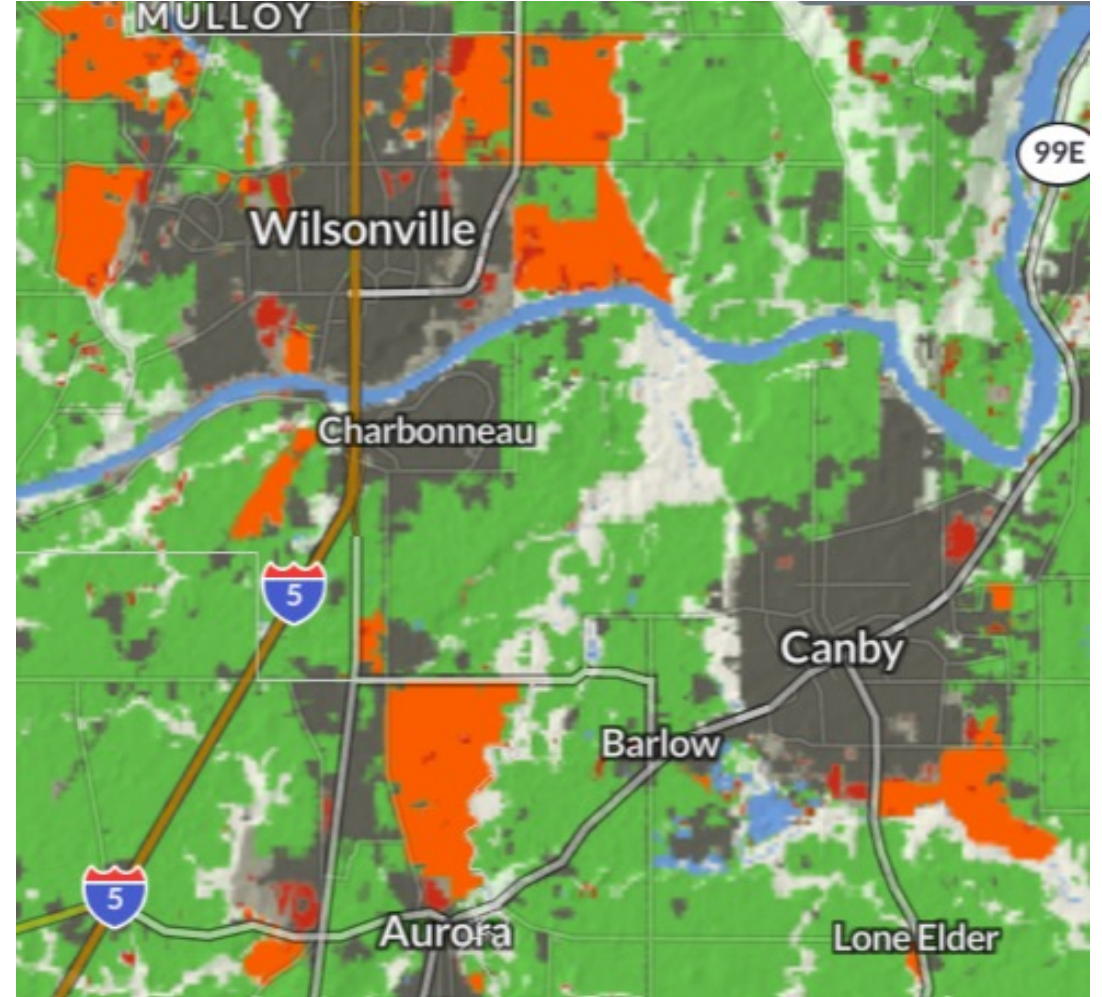
Under the “Business as Usual” scenario, Oregon is predicted to lose another 109,100 acres by 2040.



Wilsonville

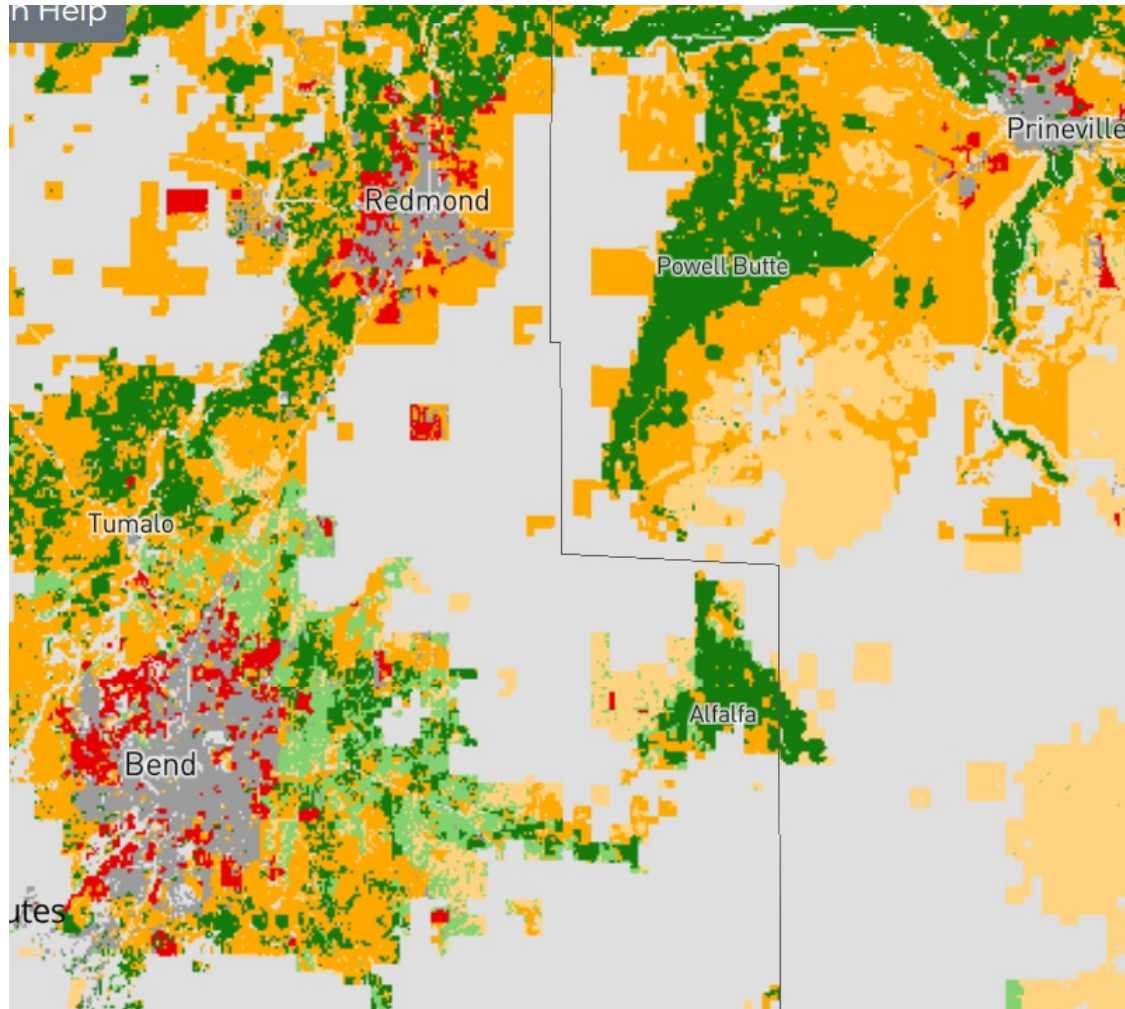


2001-2016 development

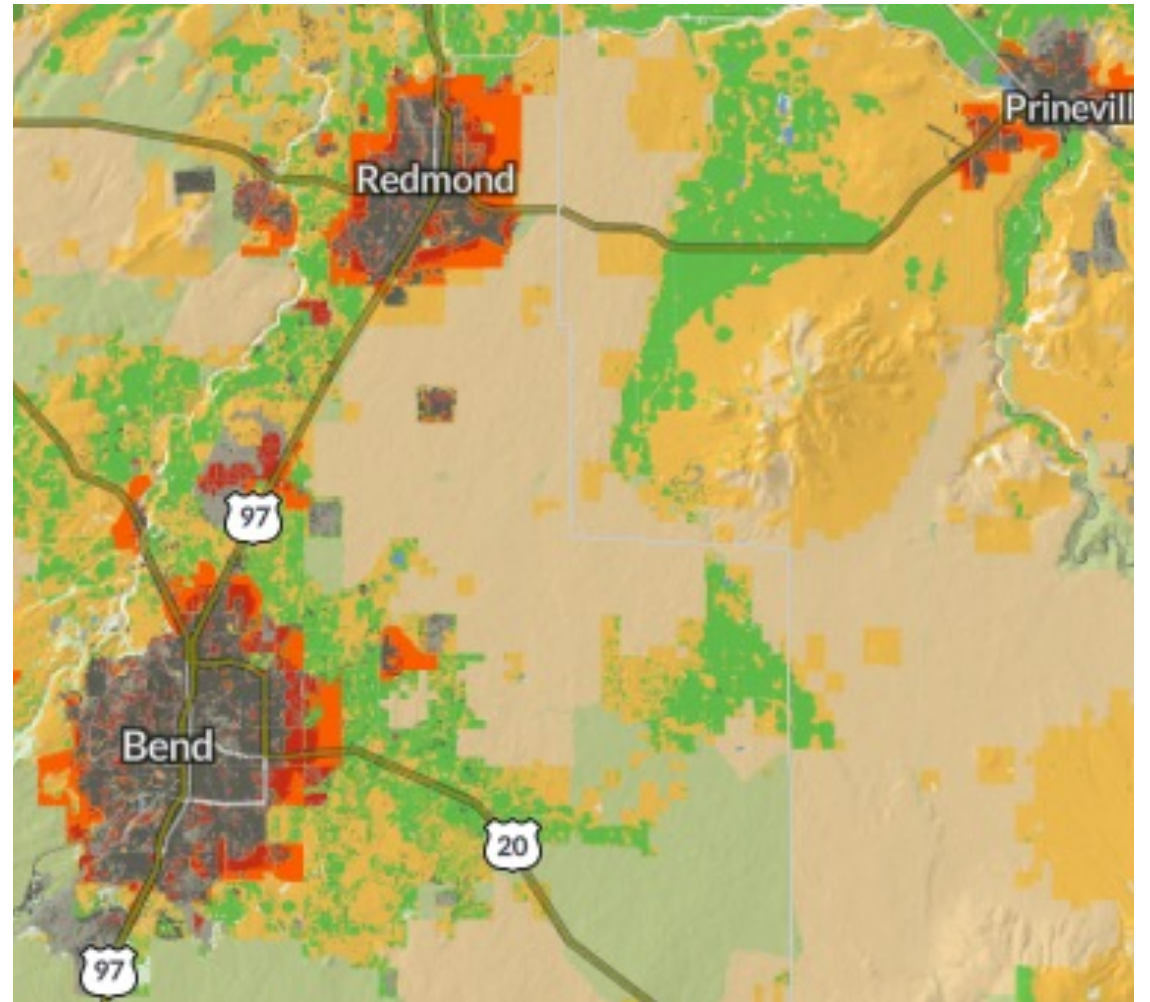


Projected to 2040

Bend

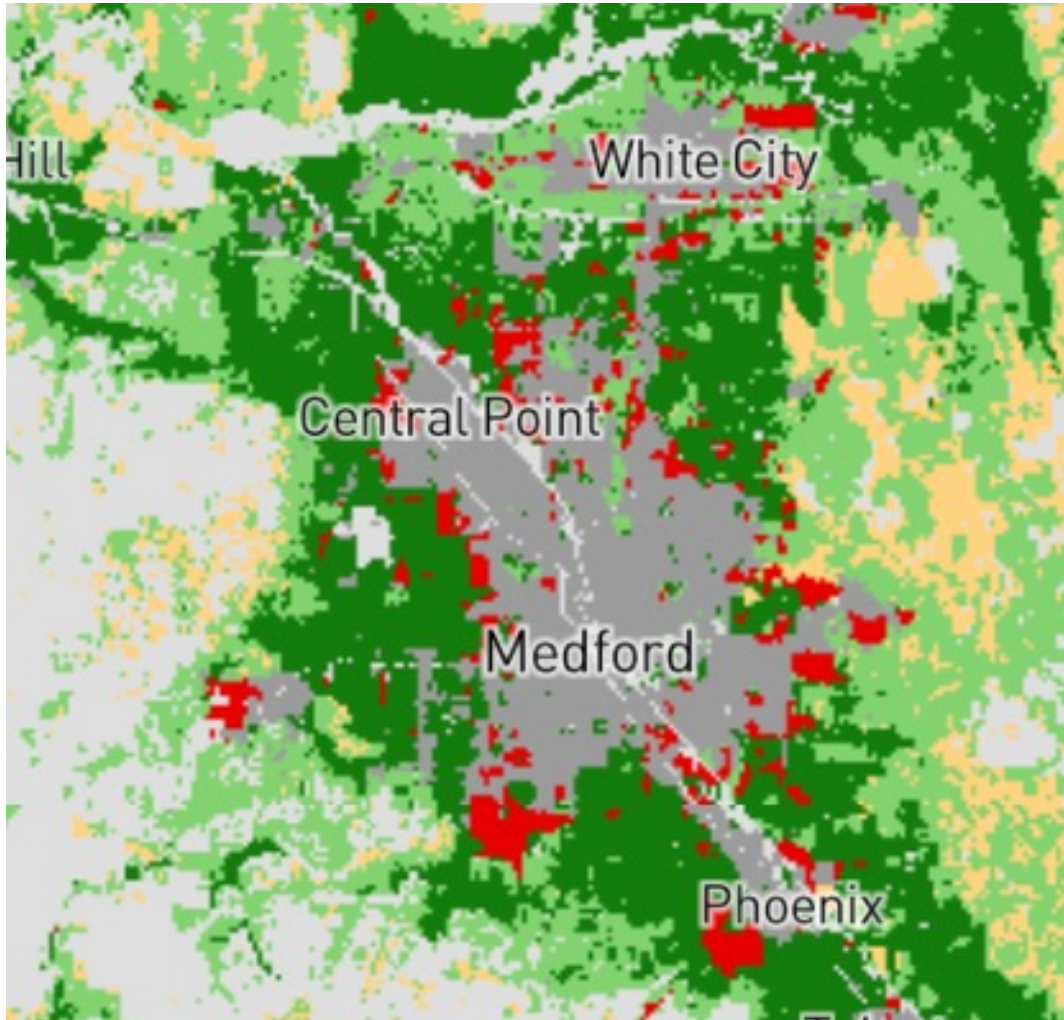


2001-2016 development

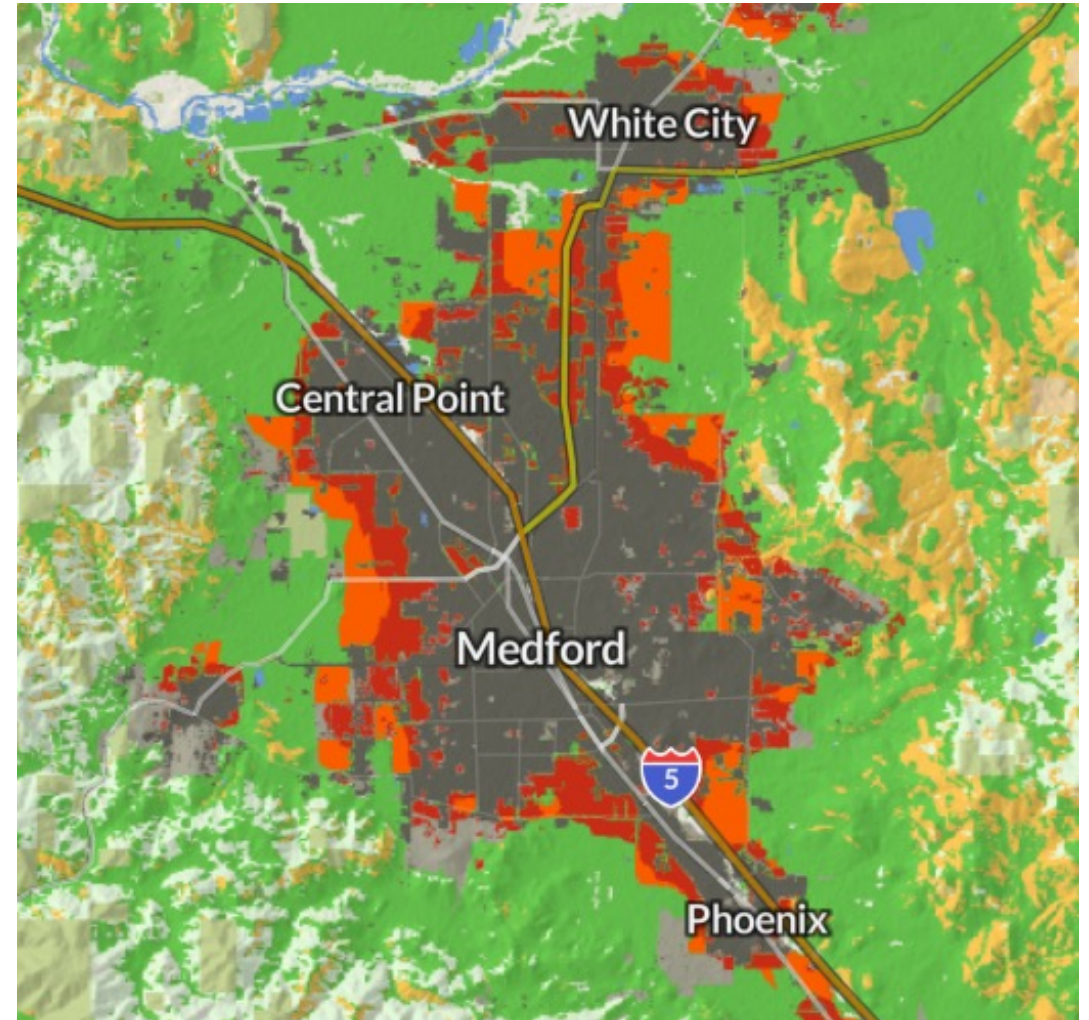


Projected to 2040

Medford



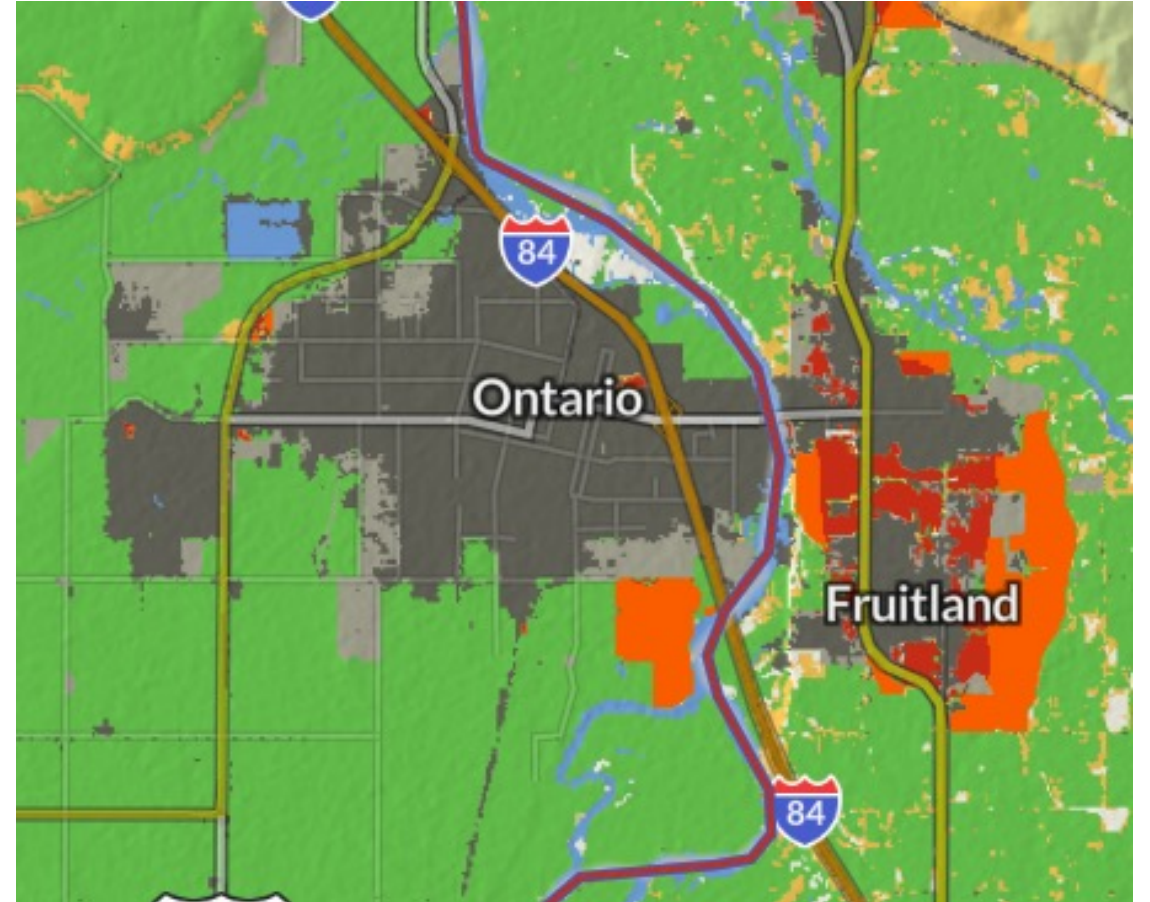
2001-2016 development



Projected to 2040

Pressure across state lines

In 2021, SB 16 allowed Malheur County to rezone 200 acres of farmland to residential.



FUT 2040 Policy Recommendations

Encourage smart growth

- Do not backslide on the statewide land use planning system
- Continue to advance urban density initiatives

Protect agricultural land

- Fund permanent farmland protection
- Understand cumulative impact of nonfarm uses on farmland

Support farmland access

- Succession planning: for every five farmers age 65+, only one is age 35 or younger

Advance smart solar siting

AFT's Smart Solar Recommendations

**Recommendations for State
and Local Governments to
Advance Smart Solar Policy –
report released December
2023**

farmland.org/solar/



AFT's Smart Solar Siting Principles

- **Siting:** Prioritizing Solar Siting on the Built Environment, Contaminated Lands, and Land Not Well-Suited for Farming
- **Soil and Water:** Safeguarding the Ability for Land to be Farmed
- **Agrivoltaics:** Expanding the Development of Solar Arrays that Integrate Farming
- **Shared Benefits:** Promoting Equity and Farm Viability

**No Farms
No Food[®]**



Thank you!

Dani Madrone

Pacific Northwest Policy Manager

Dmadrone@farmland.org