

Examples of Covered Produce

Almonds, apples, apricots, apriums, Artichokes globe-type, Asian pears, avocados, arrowhead, arrowroot, atemoya, babacos, bananas, Belgian endive, blackberries, blueberries, boysenberries, Brazil nuts, broad beans, broccoli, Brussels sprouts, burdock, butterbur, cabbages, Chinese cabbages (Bok Choy, mustard, Napa), cactus, cantaloupes, carambolas, carrots, cauliflower, celeriac, celery, chayote fruit, cherries (sweet), chestnuts, chicory (roots & tops) citrus, crabapple, cowpea beans, cress-garden, cucumbers, curly endive, currants, dandelion leaves, dragon fruit, fennel-Florence, fiddlehead, garlic, genip, ginkgo nut, gooseberries, grapes, green beans, guavas, herbs (basil, chives, cilantro, oregano, parsley), honeydew, huckleberries, Jerusalem artichokes, kale, kiwifruit, kohlrabi, komatsuna, kumquats, leek, lettuce, lychees, longan, loroco, lotus root, macadamia nuts, mangos, microgreens, other melons, mulberries, mushrooms, mustard greens, nectarines, onions, parsnips, peaches, pears, peas, peas-pigeons, peppers (bell and hot), persimmon, pine nuts, pineapples, plantains, plums, plumcots, pomegranate, pomelo, quince, radishes, ramp, raspberries, rhubarb, rutabagas, salsify, scallions, shallots, snow peas, soursop, spinach, sprouts, strawberries, summer squash (like patty pan, yellow and zucchini) swamp cabbage, sweetsop, Swiss chard, tamarillo, taro, tea, ti plant, tomatoes, turmeric, turnips (roots & tops), ulluko, walnuts, watercress, watermelons, yams.

Edible flowers, like nasturtiums, lavender, squash blossoms **are covered.*



ABOUT THE PRODUCE SAFETY RULE

- ODA's Produce Safety Program is nonregulatory. This means we received funding from the FDA for outreach, education and technical assistance. FDA conducts Produce Safety Rule inspections in Oregon.
- One person from every covered farm is required to complete an FDA recognized grower training.
- The Produce Safety Rule is not a substitute for 3rd party audits like GAP, Primus GFS, organic, etc. Even if you are using a 3rd party audit, you can still be inspected, if covered under the PSR.
- ODA has partnered with Oregon State University Extension Faculty to add expertise and increase outreach across the state.

Oregon Department of Agriculture Produce Safety Program

635 Capitol St NE, Salem, OR 97301-2532 USA
971.283.4749 | 503.807.5864
producesafety@oda.oregon.gov
<https://oda.direct/ProduceSafety>

This publication is supported by the Food and Drug Administration (FDA) of the U.S. Department of Health and Human Services (HHS) as part of a financial assistance award U2FFD007422 totaling \$630,000 with 100 percent funded by FDA/HHS. The contents are those of the author(s) and do not necessarily represent the official views of, nor an endorsement, by FDA/HHS, or the U.S. Government.

04/2021; Updated 05/2022

Produce Safety Rule in Oregon



Oregon Department of Agriculture's (ODA) Produce Safety Program is funded through a Food and Drug Administration (FDA) grant.

ODA provides education, outreach and technical assistance for the federal Food Safety Modernization Act's (FSMA) produce safety rule.



**OREGON
DEPARTMENT OF
AGRICULTURE**



ABOUT THE PRODUCE SAFETY TEAM

OREGON'S FARM FOOD SAFETY TEAM

Oregon Department of Agriculture and Oregon State University have partnered to form the Farm Food Safety Team in Oregon. This team is dedicated to working with growers, harvesters, packers and holders to understand the Produce Safety Rule for their operation.



GROWER TRAINING CLASSES

Produce Safety Alliance training meets the rule requirement that one person from every covered operation have attended a recognized training. One- and two-day courses are offered across the state providing an overview of the Produce Safety Rule and best food safety practices for growing, harvesting, packing and holding of produce. Pesticide recertification credits offered.



FREE ON-FARM READINESS REVIEWS

Voluntary, free and confidential site visit to help operators check their alignment with the Produce Safety Rule. Reviewers follow a standard decision tree to determine which parts of the rule apply to the operation.

ADDITIONAL TECHNICAL ASSISTANCE

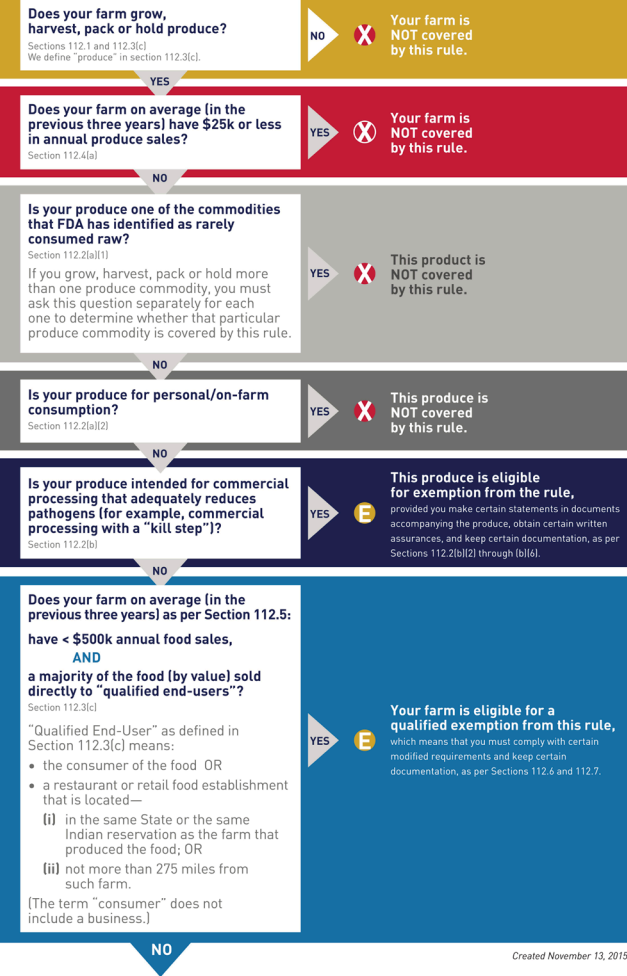
ODA is happy to engage with farms of all sizes to address questions related to the Produce Safety Rule. Phone calls or on-site visits can be utilized to help answer questions, plan for new operations or procedures, or to provide resources on produce safety challenges in your specific operation.

For further information, please contact us at (503) 986-4620 or producesafety@oda.oregon.gov



STANDARDS FOR PRODUCE SAFETY Coverage and Exemptions/Exclusions for 21 PART 112

The Preventive Controls for Human Food rule clarified the definition of a farm to cover two types of farm operations, primary production farms and secondary activities farms. The same definition is used in the Produce Safety rule [section 112.3(c)]. Below are basic criteria that determine whether an operation that meets the definition of "farm" is subject to the produce rule.



YOU ARE COVERED BY THIS RULE.