

Oregon State Board of Education

April 14, 2016

<p>SUBJECT: Redmond Supplemental Plan STAFF NAME & OFFICE: Sarah Drinkwater, Assistant Superintendent, Office of Student Services / T.J. Crockett, Program Analyst, Pupil Transportation & Fingerprinting</p> <p>Redmond School District has submitted a revised supplemental plan for approval.</p>	<p><input checked="" type="checkbox"/> Consent Agenda <input type="checkbox"/> First Reading <input type="checkbox"/> Action <input type="checkbox"/> Information</p>
---	--

BACKGROUND

Oregon Revised Statute (ORS) 327.006 includes supplemental plans approved by the State Board of Education as part of "Approved Transportations Costs. Also, ORS 327.043 requires districts to provide transportation to students identified in a supplemental plan approved by the State Board of Education.

SUMMARY OF PREVIOUS BOARD ACTION

Redmond School District's original supplemental plan was approved in 1992 and amended in 1995.

POLICY ISSUE OR CONCERNS (IF APPLICABLE)

This new plan will amend the current plan and update for changes in the district's attendance boundaries.

EFFECT OF A "YES" OR "NO" VOTE (AS APPROPRIATE)

If approved, the district will be able to claim reimbursement of transporting students in the identified areas to and from school beginning with the current school year.

If the plan is not approved, the current supplemental plan will remain in effect.

STAFF RECOMMENDATION

Approve Approve next month No recommendation at this time
 Prompted by: State law changes Federal law changes other

CHANGED SINCE LAST BOARD MEETING? (IF APPLICABLE)

N/A; first read—hasn't been before board
 No; same as last month
 Yes – As follows:

Oregon State Board of Education

April 14, 2016

FISCAL ANALYSIS (AS APPROPRIATE)

N/A

ATTACHMENTS (e.g., OAR with “track changes” ...)

Attachment 1: Redmond Supplemental Plan and Local Board Resolution to adopt.

Oregon State Board of Education
April 14, 2016



NOV 25 2015

145 SE Salmon Ave | Redmond, OR 97756
www.redmond.k12.or.us

P: 541.923.5437
F: 541.923.5142

November 18, 2015

Oregon Department of Education
255 Capital St. NE
Salem, Or 97301

Re: Supplemental Transportation Plan

Dear Review Team,

The Redmond School District Board of Directors and I are asking that you consider an exception for an area which has emerged as a significant safety concern for our pupil transportation department and the families we serve.

The area is on the southern region of our district and affects high school aged students that attend our new high school, Ridgeview High School. Currently there are seven students within the walking boundary of the school, but must walk to Ridgeview on two unimproved pedestrian routes.

There are no shoulders, sidewalks, or alternative routes available for students to use to maximize their own safety. Traffic travels at high speeds and often before dawn and after dark. The posted speed limit is 45–55 mph and we are aware that often speeds exceed the posted limit. In addition, traffic is at a very high volume as both Helmholtz and South Canal are main arterial routes for parents and commuters. Please see attached maps where you can see blind rises, blind corners, as well as long straight stretches which tempt high rates of speed.

Please don't hesitate to call for any further clarification. Thank you for your consideration of this critical matter on behalf of our kids and families.

Sincerely,

Handwritten signature of Michael D. McIntosh in black ink.

Michael D. McIntosh
Superintendent
Redmond School District

Handwritten signature of Richard C. Bailey in black ink.

Richard C. Bailey
Chairman
Redmond School District Board of Directors

Oregon State Board of Education

April 14, 2016

DRAFT UNTIL BOARD APPROVED

Redmond School District
Board Meeting
October 28, 2015

In Attendance: Chair Rick Bailey, Vice Chair AJ Losoya, Directors Johnny Corbin, Tim Carpenter, Shawn Hartfield, Superintendent Mike McIntosh, RSD Staff, Gina Blanchette, Kelly Richard, Linda Seeberg, Kathy Steinert, Chris Morton, Martha Hinman, David Burke, Lynn Evans, RVHS teacher Karin Crouch.

Chair Bailey called the meeting to order with a quorum of five at 5:30 p.m.

Junior Achievement of Central Oregon District Manager Liz Lotochinski explained how JA empowers young people to own their own economic future by hands-on programs. They are always looking for volunteers as well.

RPA students Katie Bullock and Ethan Flahtery visited and updated the board on RPA happenings; Living History Day on October 10th, The Green Team allowing students to get more involved in an ecofriendly environment, planning for Earth Day, Alice in Wonderland performing November 13th and 14th with both middle and high school students, Camp Tamarack student leaders, and first week of Nov is College Application Week.

Doris Mascal, REA – Thanked the district for keeping SLG's the same as last year. There will be a new teacher meet and greet to welcome our staff on November 13th. There is some concern amongst staff with the tragic shootings in Roseburg, our lockdowns, and Marshal High incident. Teachers do participate in CPI training and appreciate working with Martha and administration.

ACTION ITEMS

Administration of Oath of Office

Chair Bailey presented the Oath of Office to Shawn Hartfield.

Resolution 15:092 Supplemental Budget

Vice Chair Losoya moved to approve Resolution 15:092 to adopt and appropriate a supplemental budget for 2015-16 in the amounts specified in the resolution. The motion was seconded by Director Corbin. Motion carried 5-0.

Fiscal Year 2016-17 Budget Committee Vacancies

Director Corbin moved to declare two openings on the Redmond School Board Budget Committee, and to direct district staff to advertise the vacancies and accept applications, if Missy McVay is interested, the board will appoint her to continue in the position. The motion was seconded by Director Carpenter. Motion carried 5-0.

Fiscal Year 2016-17 Budget Committee Meeting Calendar

Vice Chair Losoya moved to approve the 2016-17 Budget Calendar as presented. The motion was seconded by Director Hartfield. Motion carried 5-0.

Superintendent Contract Amendments

Director Carpenter moved to approve the superintendent contract amendments as presented. The motion was seconded by Vice Chair Losoya. Motion carried 5-0.

Oregon State Board of Education
April 14, 2016

RESOLUTION 16:094
January 27, 2016

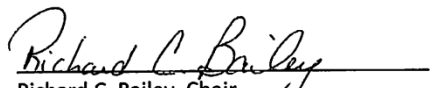
RESOLUTION GRANTING REDMOND SCHOOL DISTRICT
APPLICATION FOR A SUPPLEMENTAL TRANSPORTATION PLAN
TO OREGON DEPARTMENT OF EDUCATION

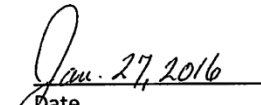
WHEREAS, the Redmond School District Board of Directors is requesting Oregon Department of Education to consider an exception to the transportation plan due to significant safety concerns for our students.

WHEREAS, the Board has determined the area is on the southern regions of the district and affects approximately seven high school aged students within the walking distance from Ridgeview High School. It has been determined there are no shoulders, sidewalks, or alternative routes available for students to use and vehicles travel at high rates of speed through the area of concern.

NOW, THEREFORE, BE IT RESOLVED that the Redmond School District Board of Directors hereby authorizes Superintendent Michael D. McIntosh to submit a proposal for a Supplemental Transportation Plan to consider an exception for an additional reimbursable bus stop within walking distance of Ridgeview High School.

These resolution statements were approved and declared adopted on this 26th day of January.


Richard C. Bailey, Chair
Redmond School District Board of Directors


Date

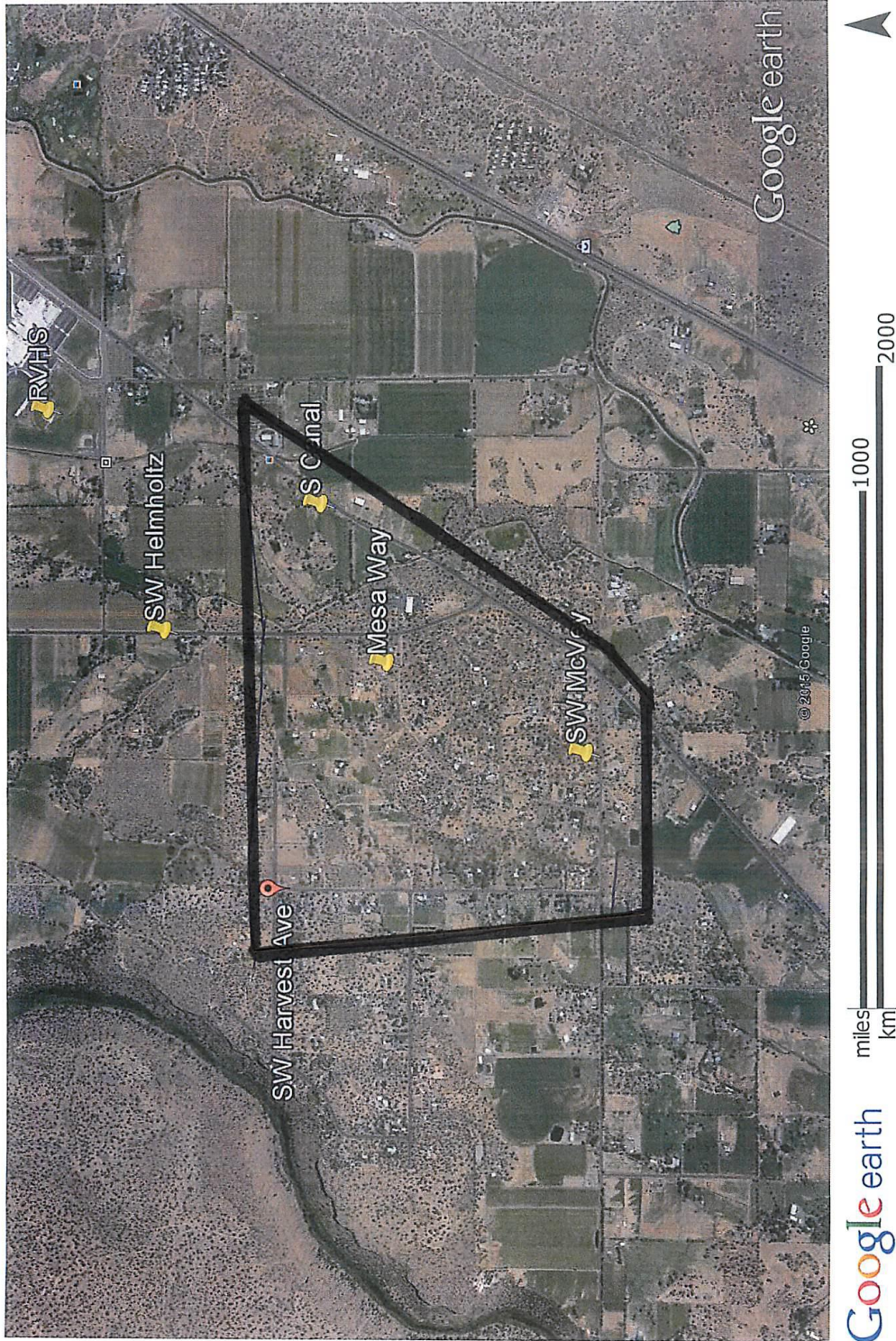
Oregon State Board of Education

April 14, 2016



Oregon State Board of Education

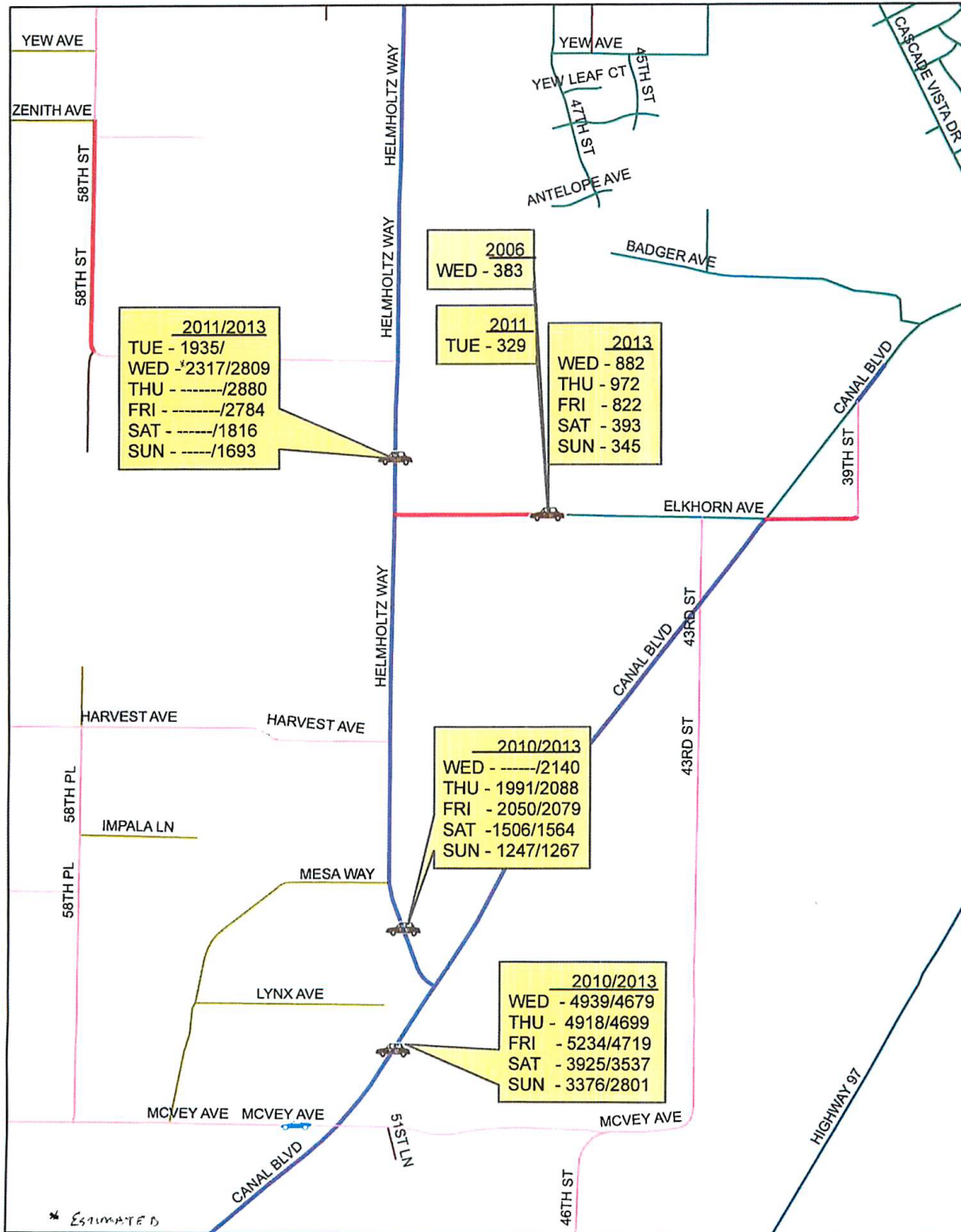
April 14, 2016



Oregon State Board of Education

April 14, 2016

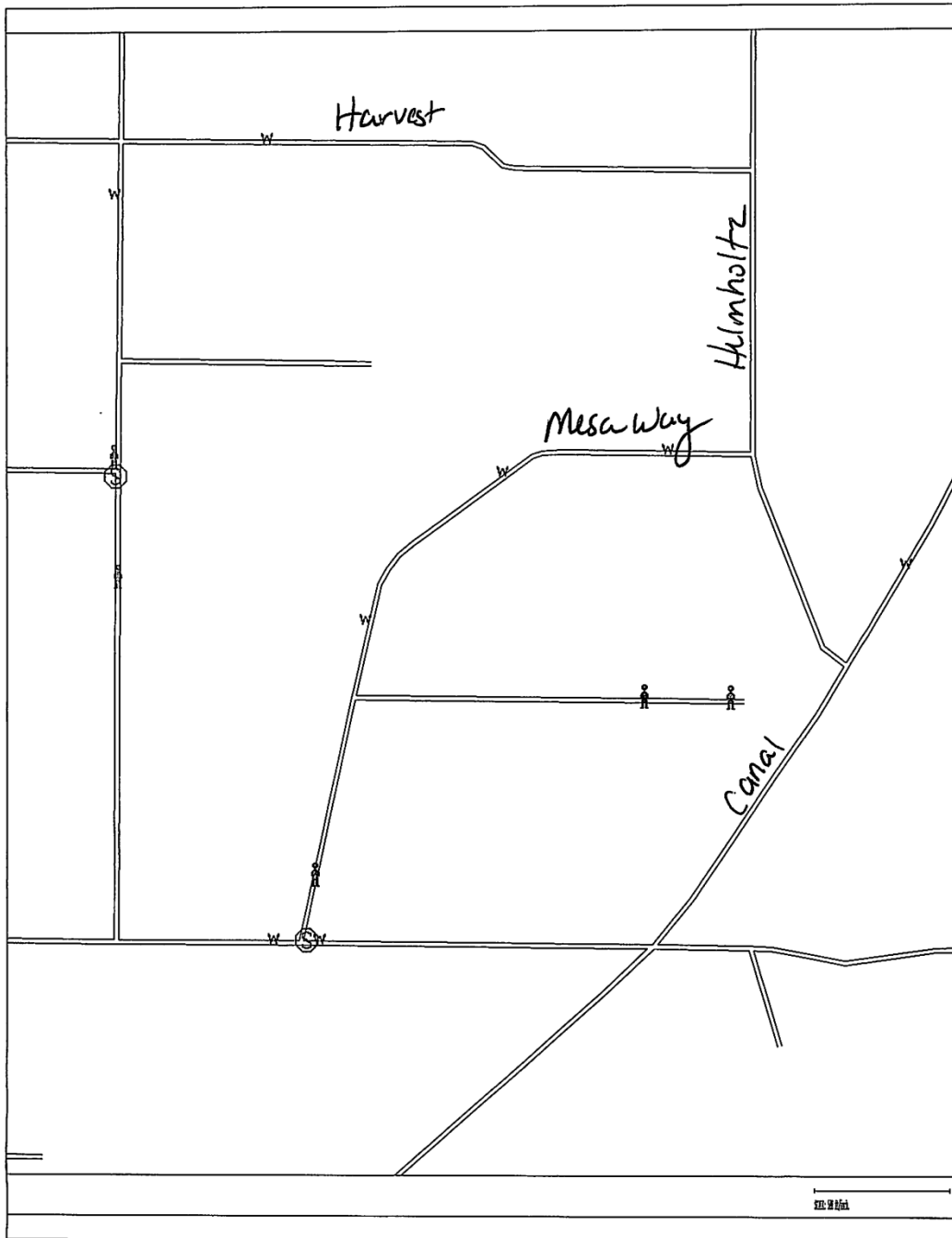
RECORDED ADTs FOR THE AREA OF:
S. CANAL BLVD
HELMHOLTZ WAY
ELKHORN AVE



Oregon State Board of Education

April 14, 2016

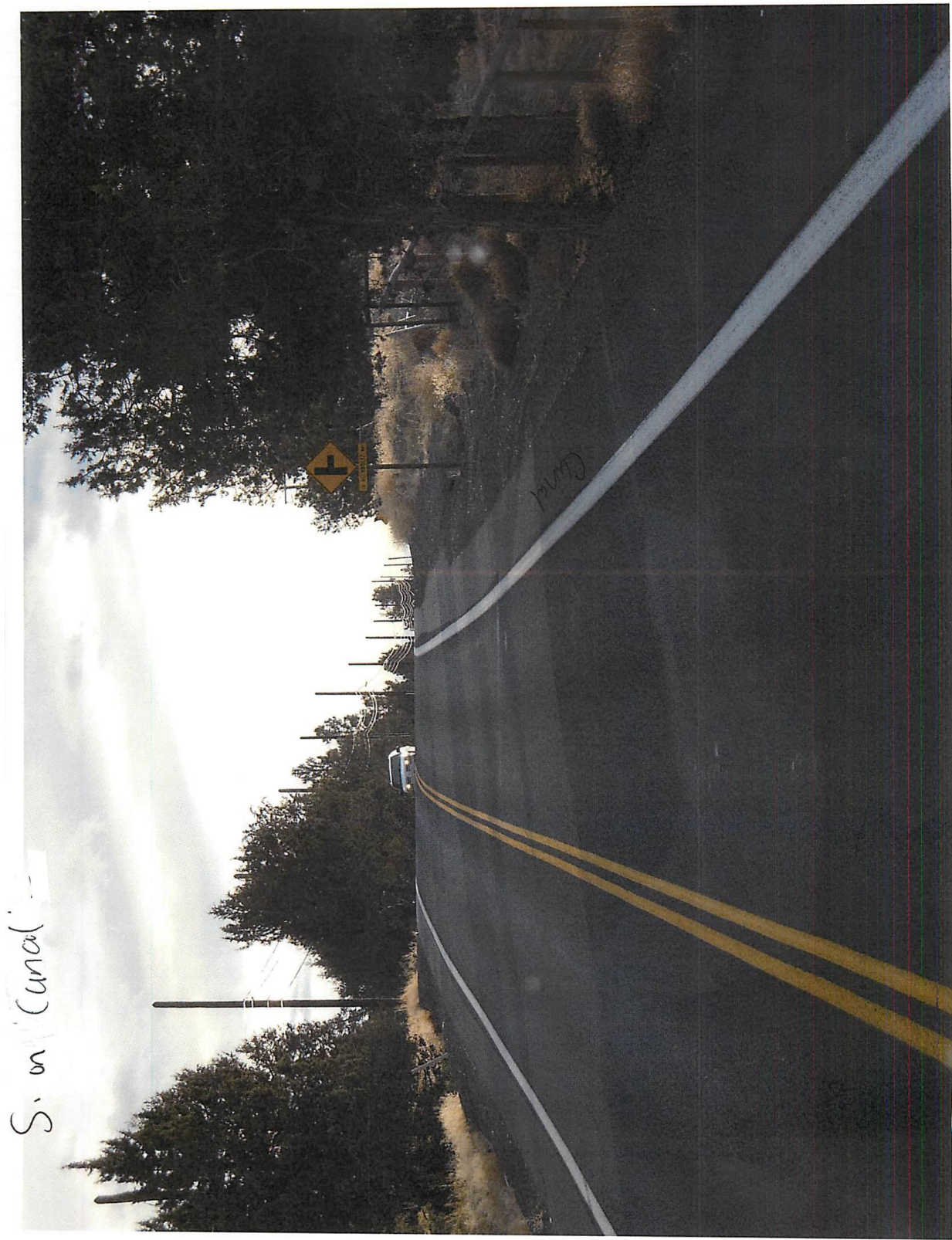
N



S

Oregon State Board of Education

April 14, 2016



Oregon State Board of Education
April 14, 2016



Oregon State Board of Education

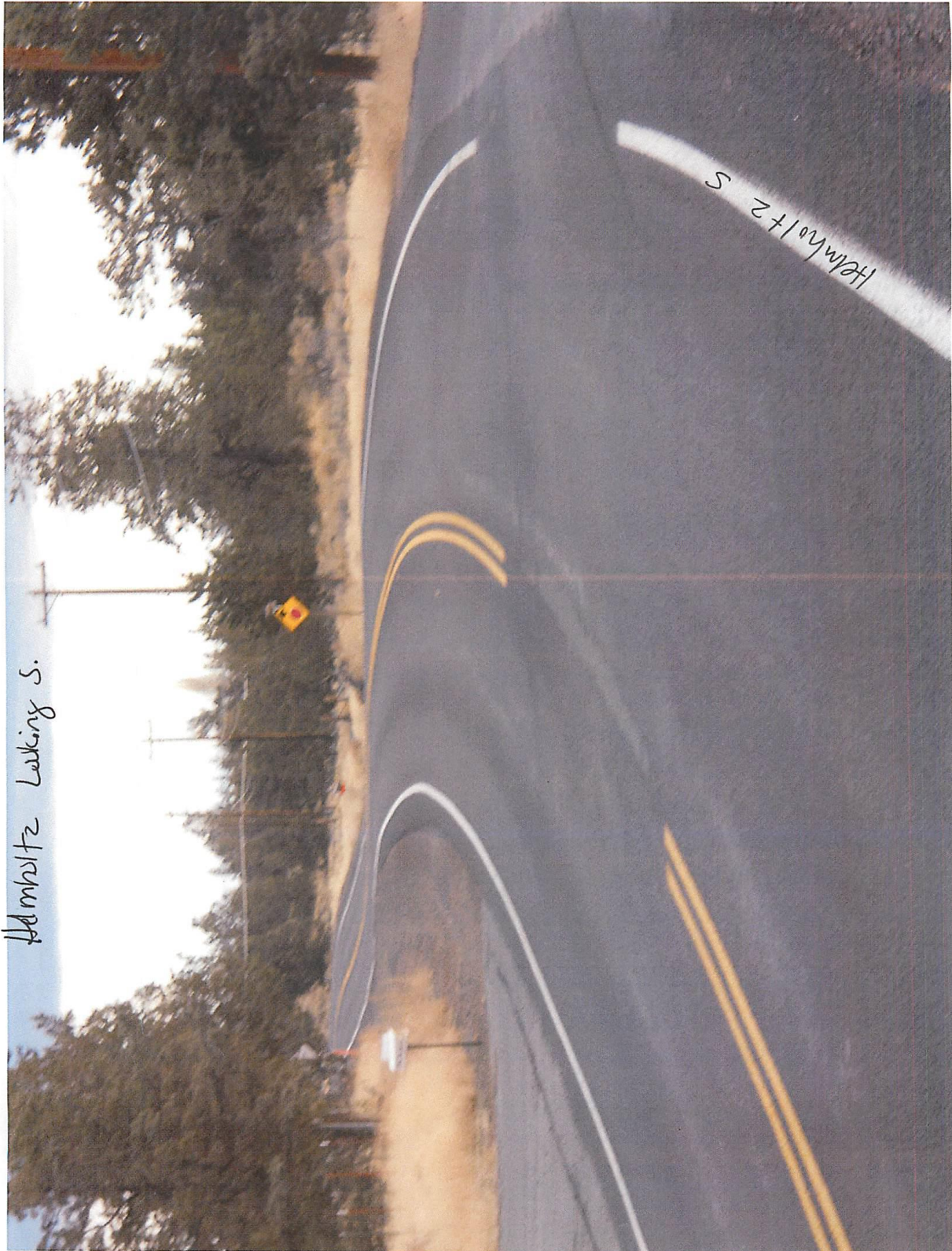
April 14, 2016

S - Canal near KVMS



Oregon State Board of Education

April 14, 2016



Oregon State Board of Education

April 14, 2016



Helmholz working ?

Oregon State Board of Education

April 14, 2016



Oregon State Board of Education
April 14, 2016



Oregon State Board of Education
April 14, 2016



Oregon State Board of Education

April 14, 2016



Humboldt N

Helmholtz N

Oregon State Board of Education

April 14, 2016



Oregon State Board of Education

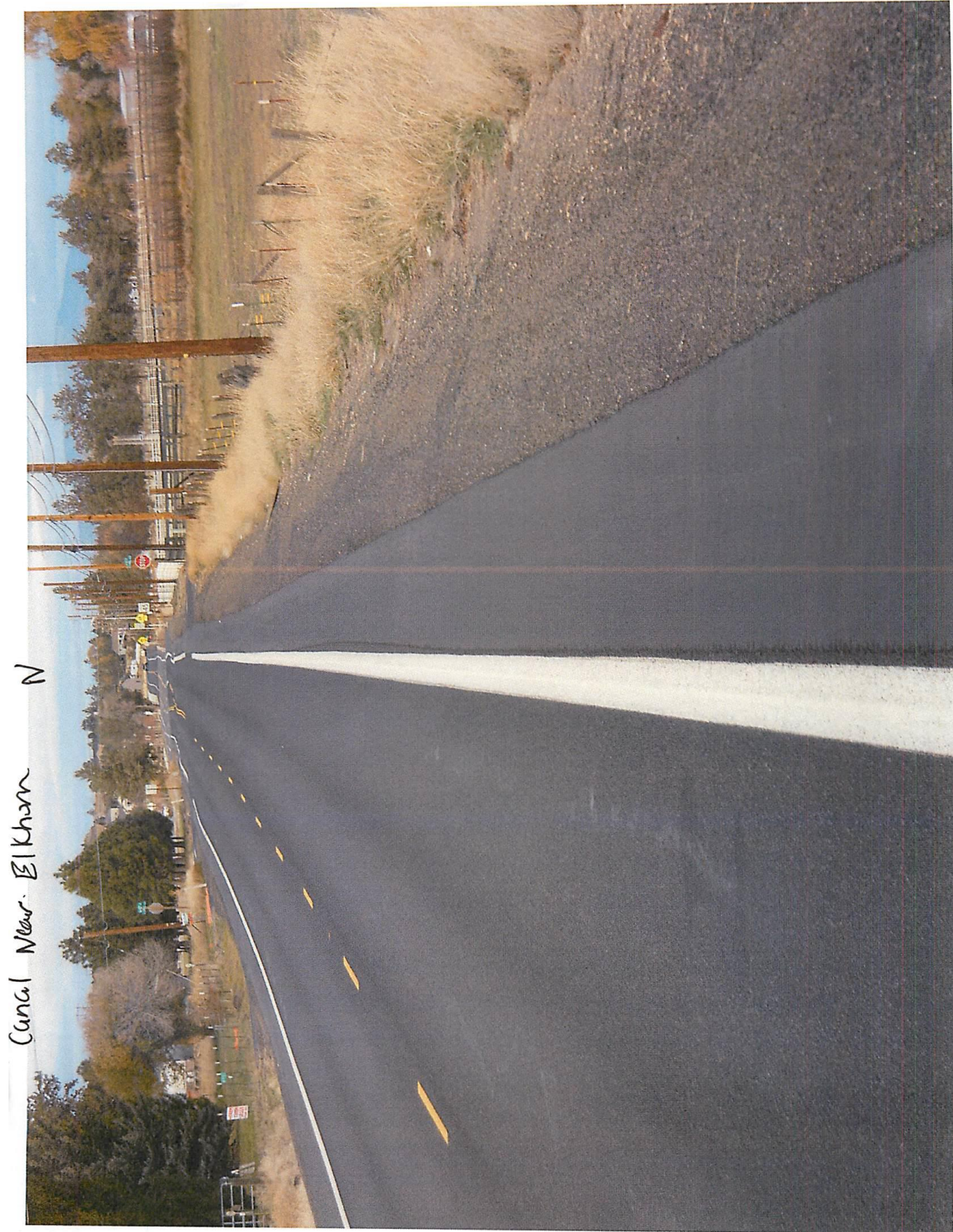
April 14, 2016



Oregon State Board of Education
April 14, 2016



Oregon State Board of Education
April 14, 2016



Oregon State Board of Education

April 14, 2016



Google earth

miles 3
km 5



Mesa + Helmholtz

Oregon State Board of Education

April 14, 2016

N



Google earth

miles 2
km 3



Helmholtz & Harvest