



Willamette

EDUCATION SERVICE DISTRICT

the

Center



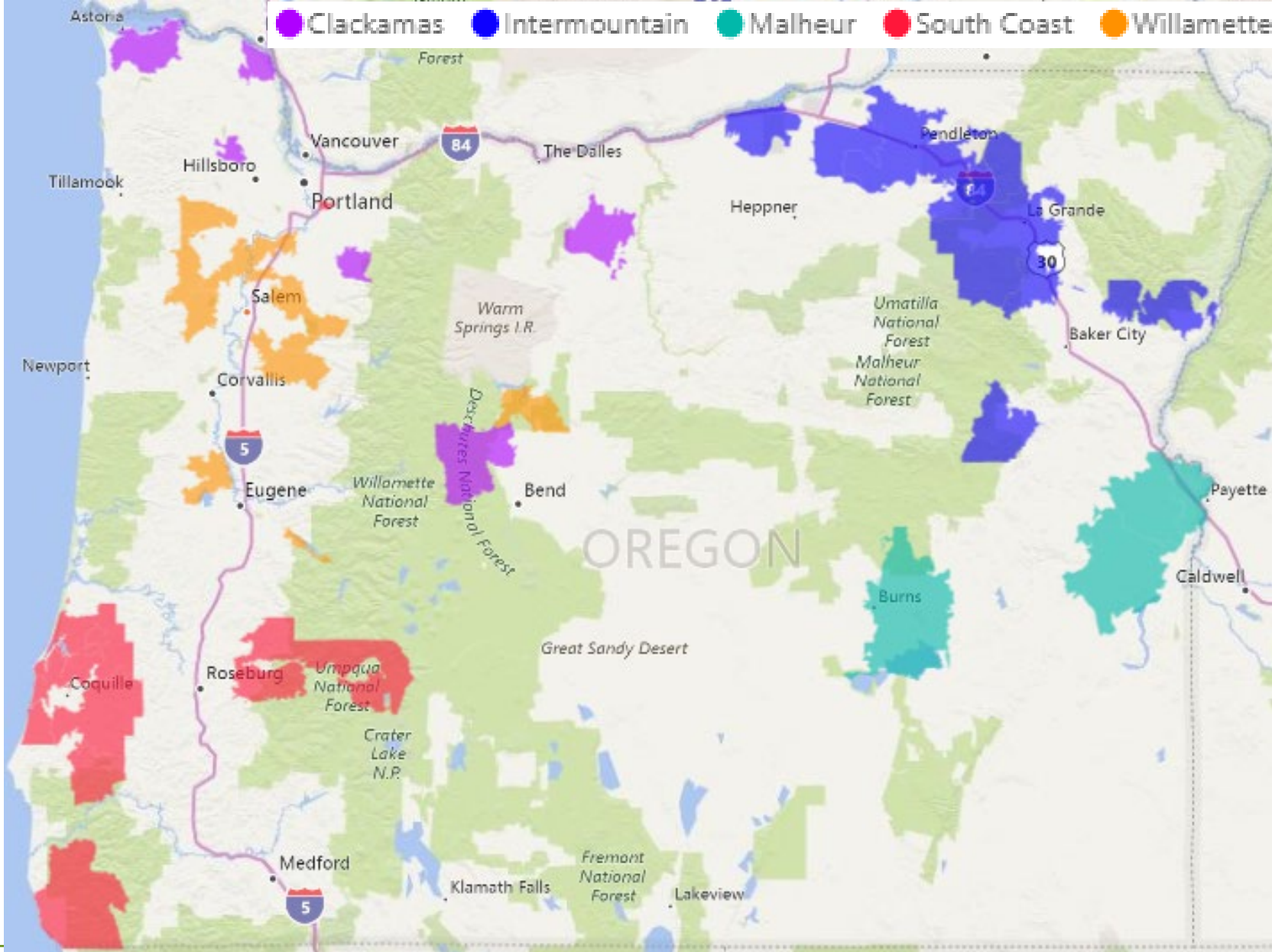
for Education Innovation · Evaluation · Research

January-April ELD TA Data

Process

- ELD Specialists and the ODE Lead were consulted to identify key information to track.
- Logs were developed in Excel capturing information ELD Specialists collect and were revised several times.
- The Evaluator worked with the Specialists to make sure the spreadsheets were functioning correctly.
- Specialists submitted the logs monthly.
- Data was combined into one working Excel spreadsheet for analysis.
- The time period covered is January, 2018-April, 2018.

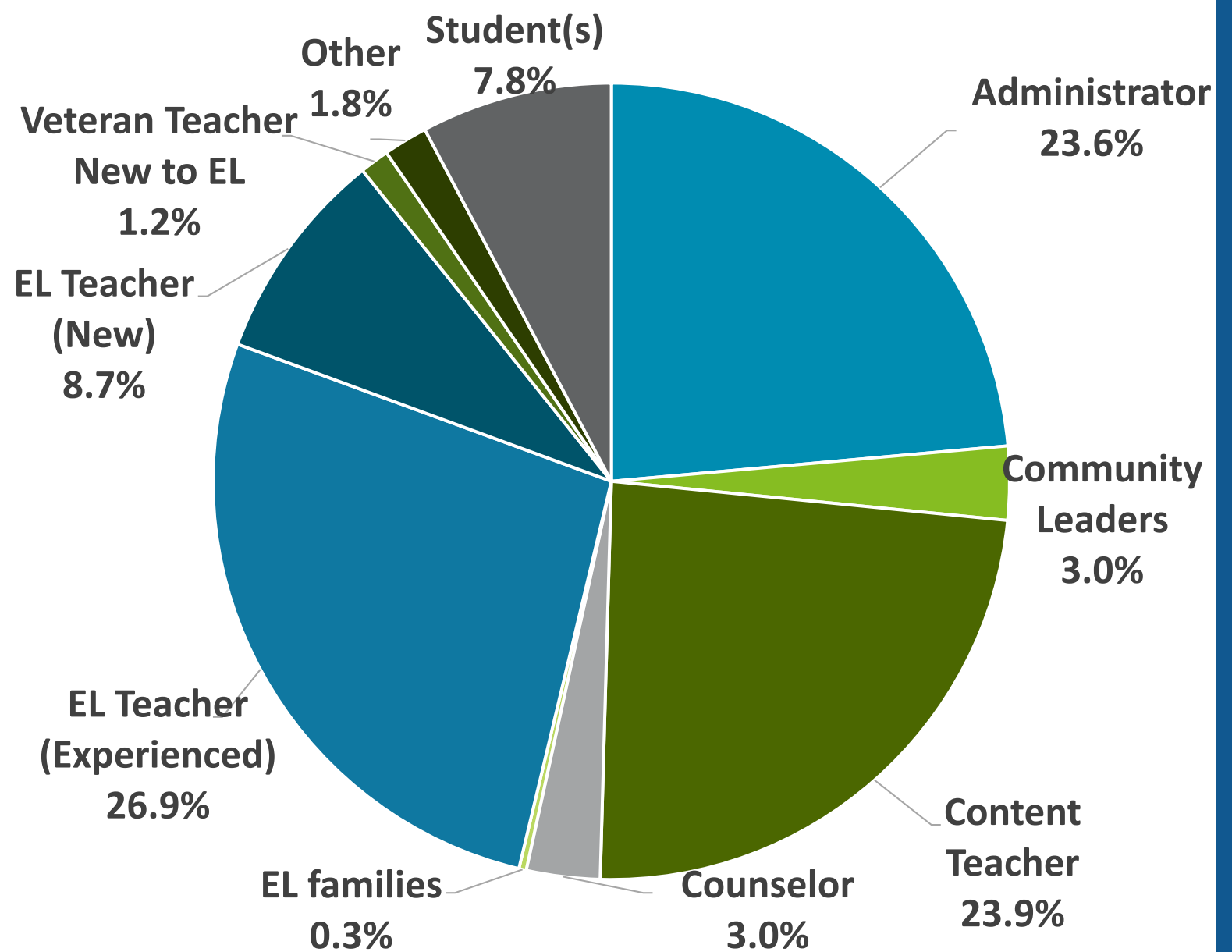
Regions Covered



Recipients of TA included...

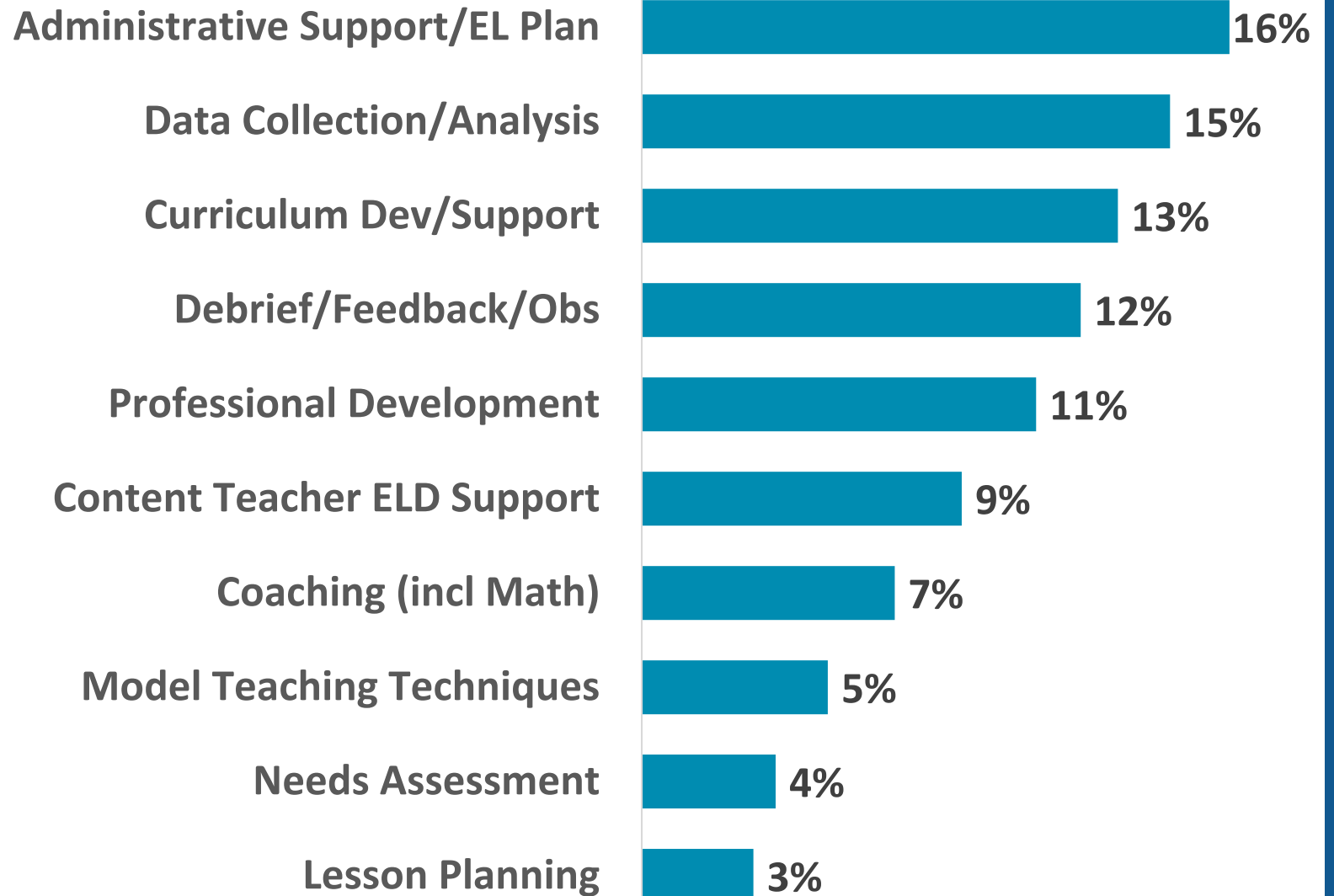
(n=335*)

**This number includes multiple attendees at single meetings, although all attendees were not always captured.*



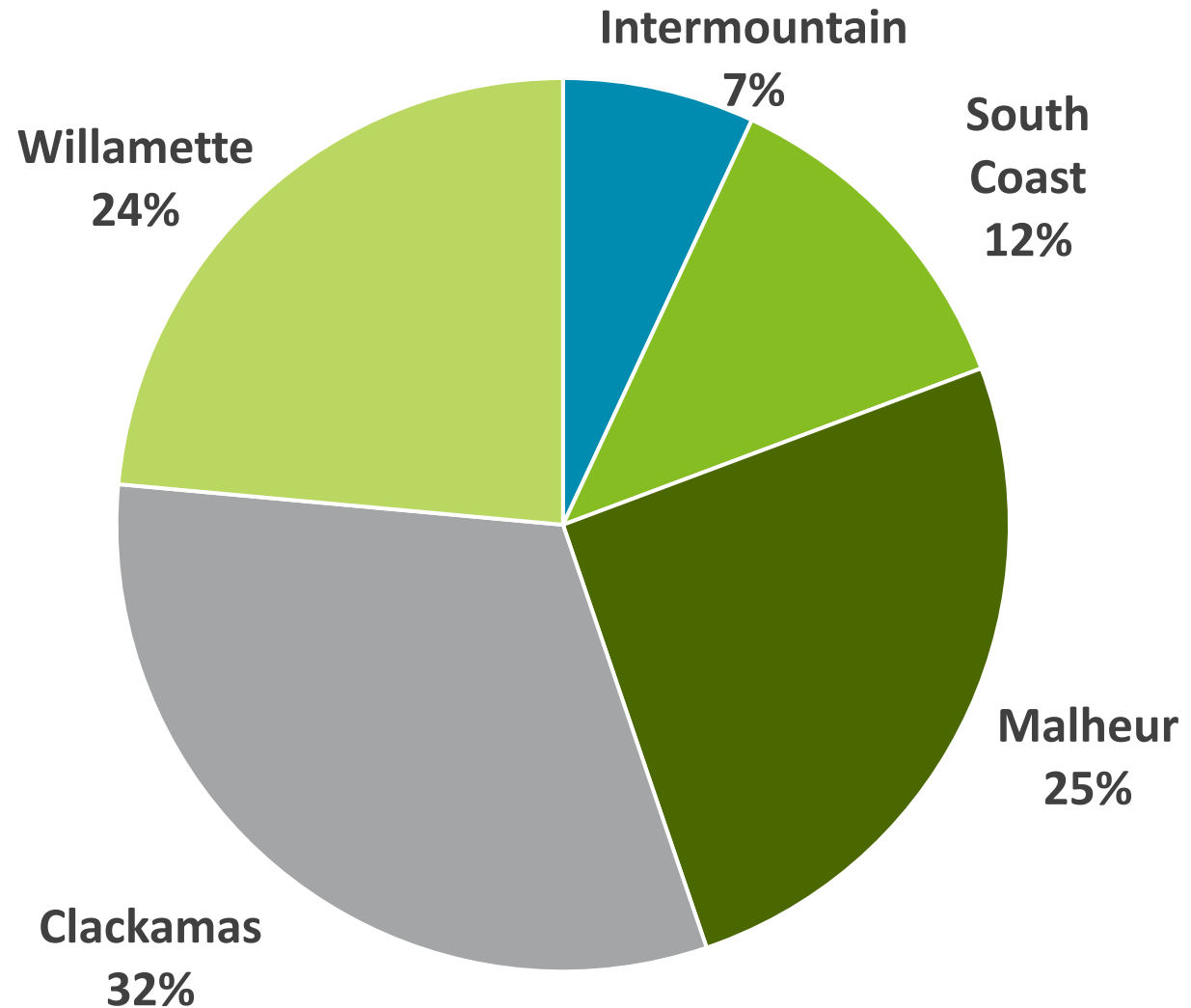
**95% of
TAs
Involved
These 10
Areas** (n=486*)

**Each session could include multiple TA areas.*



Percent of TA Sessions in Each ESD (n=259*)

**This is based on the number of individual visits.*



Grade Levels Associated with TAs

(n=337*)

**This number is based on the numbers of individuals at each session who work in each area.*

