

OREGON PARTNERSHIP

Thursday, April 11th, 1:00 – 2:00pm

800 NE Oregon Street, Room 1B
Portland, OR 97232



Webinar Link: <https://global.gotomeeting.com/join/890713053>

Conference call line for audio: [+1 \(669\) 224-3412](tel:+16692243412)

Access code: 890-713-053

Meeting Objectives:

- Provide update on subcommittee formation
- Finalize health equity framework
- Discuss criteria for strategy identification

Time	Items
1:00 – 1:05pm	Welcome, introductions and meeting purpose
1:05 - 1:10pm	Public Comment
1:10 – 1:20pm	Update on subcommittee formation <ul style="list-style-type: none">• Institutional bias.• Adversity, trauma and toxic stress.• Economic drivers of health• Access to equitable preventive health care.• Behavioral health
1:20 – 1:40pm	Finalize framework
1:40 – 1:55pm	Criteria for strategy identification
1:55 – 2:00pm	Wrap up and next steps

**2020-2024 State Health Improvement Plan
PartnerSHIP Meeting #4
April 11th, 2019**



PUBLIC HEALTH DIVISION

Office of the State Public Health Director

Plan for the hour

- Update on subcommittee formation & work plan
- Finalize framework
- Discuss criteria for strategy identification

Public Comment

PUBLIC HEALTH DIVISION

Office of the State Public Health Director

Oregon
Health
Authority

Subcommittee formation

PUBLIC HEALTH DIVISION

Office of the State Public Health Director

Oregon
Health
Authority

Institutional bias

Confirmed	Pending invitation
<p><i>Kim Sogge, P'SHIP</i> <i>Paul Virtue, P'SHIP</i> <i>Brian Gibbs, P'SHIP</i> <i>Clarice Freitas, P'SHIP</i> Channa Lindsay, Deschutes County</p>	<p><i>OHA - Office of Equity & Inclusion (lead)</i> PLE: Barry Fox-Quamme, Centers for Independent Living Coalitions of Communities of Color Tribes Regional Health Equity Coalitions Local Public Health Authorities Department of Education Department of Human Services Department of Transportation Oregon State Sherriff's Association Coordinated Care Organizations Measurement committees</p>

Adversity, trauma and toxic stress

Confirmed	Pending invitation
<p><i>Laura Williams, P'SHIP</i> <i>Frank Franklin, P'SHIP</i> <i>Kirt Toombs, P'SHIP</i> <i>David Bangsberg, P'SHIP</i> <i>Annie Valtierra Sanchez, P'SHIP</i> Kimberlee Handloser, Jackson County Susan Boldt, Cascade Health Alliance TBD, Trauma Informed Oregon</p>	<p><i>OHA- Maternal & Child Health (lead)</i> PLE: Oregon State Hospital resident PLE: TIO Youth Advisory Council Regional Health Equity Coalitions Tribes TRACES Kevin Modica Alicia Moreland Capria Department of Education Department of Human Services Coordinated Care Organizations Local Public Health Authorities Oregon State Sherriff's Association Danica Brown, NPAIHB Measurement committees</p>

Economic drivers

Confirmed	Pending invitation
<p><i>Victoria Warren Mears, P'SHIP</i> <i>Rebeckah Berry, P'SHIP</i> <i>Kim Sogge, P'SHIP</i> <i>Cat Livingston, P'SHIP</i> <i>Alicia Ramirez, P'SHIP</i> Carly Hood, Oregon Primary Care Association Connor McDonnell, Oregon Housing and Community Services</p>	<p><i>OHA- Health Policy and Analytics (lead)</i> PLE: Consumer Advisory Councils Oregon Office of Public Policy Partners for a Hunger Free Oregon Department of Transportation Department of Education Department of Human Services Oregon State Sherriff's Association</p>

<p>Cord Van Ripper, Cascade Health Alliance Brian Frank, OHSU Jacob Fox, Homes for Good</p>	<p>Tammy Baney, Central Oregon Intergovernmental Council Tribes Regional Health Equity Coalitions Local Public Health Authorities Bureau of Labor and Investigations Coordinated Care Organizations Measurement committees</p>
---	---

Access to equitable preventive care

Confirmed	Pending invitation
<p><i>Cat Livingston, P'SHIP</i> <i>Katie Harris, P'SHIP</i> <i>Kelle Little, P'SHIP</i> <i>Katrina Hedberg, P'SHIP</i> <i>Jim Rickards, P'SHIP</i> Nina Fekaris, National Association of School Nurses Laura McKeane, Allcare Health Senna Tower, United Way Lane County Muriel De Lavergne-Brown, Crook County</p>	<p><i>OHA -HIV/STD/TB (lead)</i> PLE: Oregon State Hospital PLE: Consumer Advisory Councils Jessica Richardson, Harney District Family Care Clinic Danielle Sobel, Oregon Primary Care Association Haven Wheeler, Outside In Oregon Community Health Workers Association Bridgett Canniff, NPAIHB Tribes Regional Health Equity Coalitions Local Public Health Authorities Coordinated Care Organizations Measurement committees</p>

Behavioral health

Confirmed	Pending invitation
<p><i>Holden Leung, P'SHIP</i> <i>Katrina Hedberg, P'SHIP</i> <i>Paul Virtue, P'SHIP</i> <i>Erin Schulten, P'SHIP</i> Athena Goldberg, Allcare Health</p>	<p><i>OHA-Adolescent Health (lead)</i> PLE: Consumer advisory councils (SUD, Children's MH, Adult MH) Alcohol and Drug Policy Commission Alliance for Suicide Prevention Department of Education Department of Human Services Janice Garceau, Deschutes County Charmaine Kinney, Multnomah County Tribes Regional Health Equity Coalitions Oregon State Sherriff's Association Local Public Health Authorities Coordinated Care Organizations</p>

	Measurement committees
--	------------------------

Subcommittee Process Map

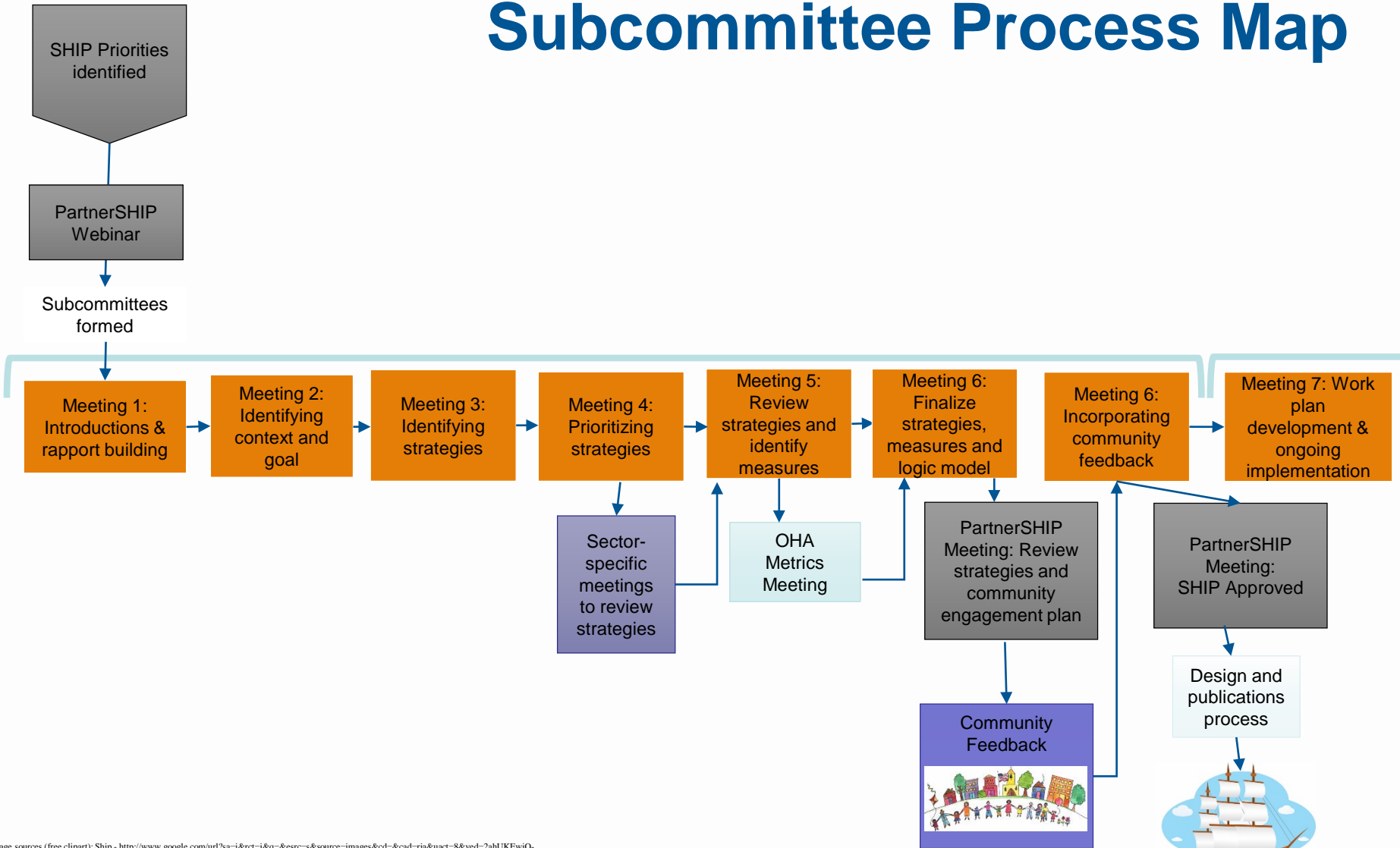


Image sources (free clipart): Ship - <http://www.google.com/url?sa=i&rect=j&q=&esrc=s&source=images&cd=&cad=rja&uact=8&ved=2ahUKEwjQ-ZC8ipThAhWS4J4KHVCLDlcQjRx6BAgBEAU&url=http%3A%2F%2Fdiy.solarpanels.com%2Ffree-clip-art-sailing-ship.html&psig=AOvVaw3surAMa3zsg8ex39aITVmy&ust=1553298627159740>; community - http://www.google.com/url?sa=i&rect=j&q=&esrc=s&source=images&cd=&cad=rja&uact=8&ved=2ahUKEwjcnZDyuThAhXLvp4KHd2KDp0QjRx6BAgBEAU&url=http%3A%2F%2Fclipart-library.com%2Fcommunity-cliparts.html&psig=AOvVaw3ZDEInHOaUTbXq_KPTopAv&ust=1553299275591434



Finalize health equity framework

PUBLIC HEALTH DIVISION

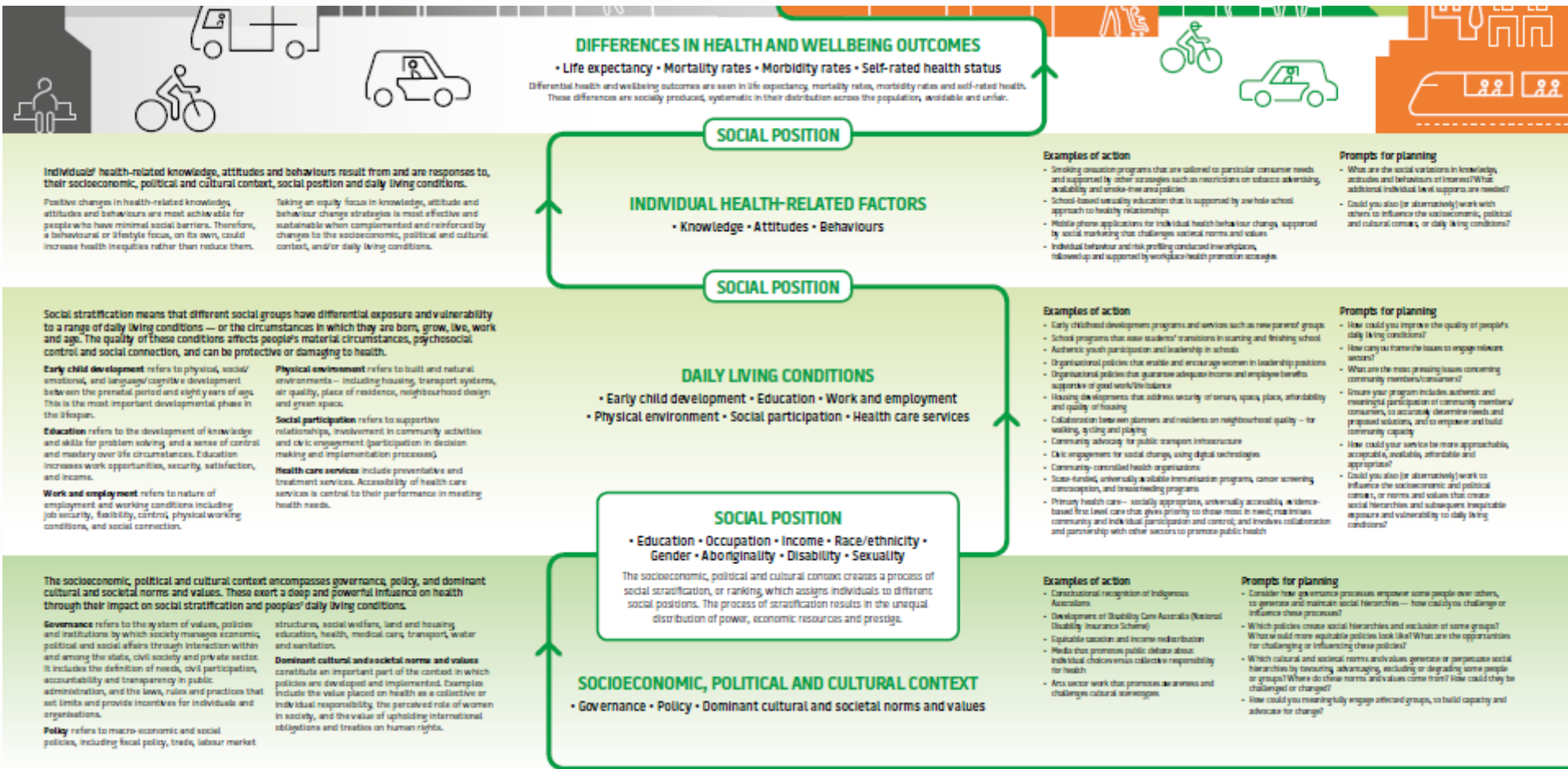
Office of the State Public Health Director

Oregon
Health
Authority

Purpose of frameworks

- Provide an organizational structure for the strategies
- Call out roles and responsibilities of implementers
- Address the interrelatedness of the issues
- Maintain an equity lens
- Tool for subcommittees to maintain focus and consistency across priority areas

Example 4: VicHealth Framework for health equity



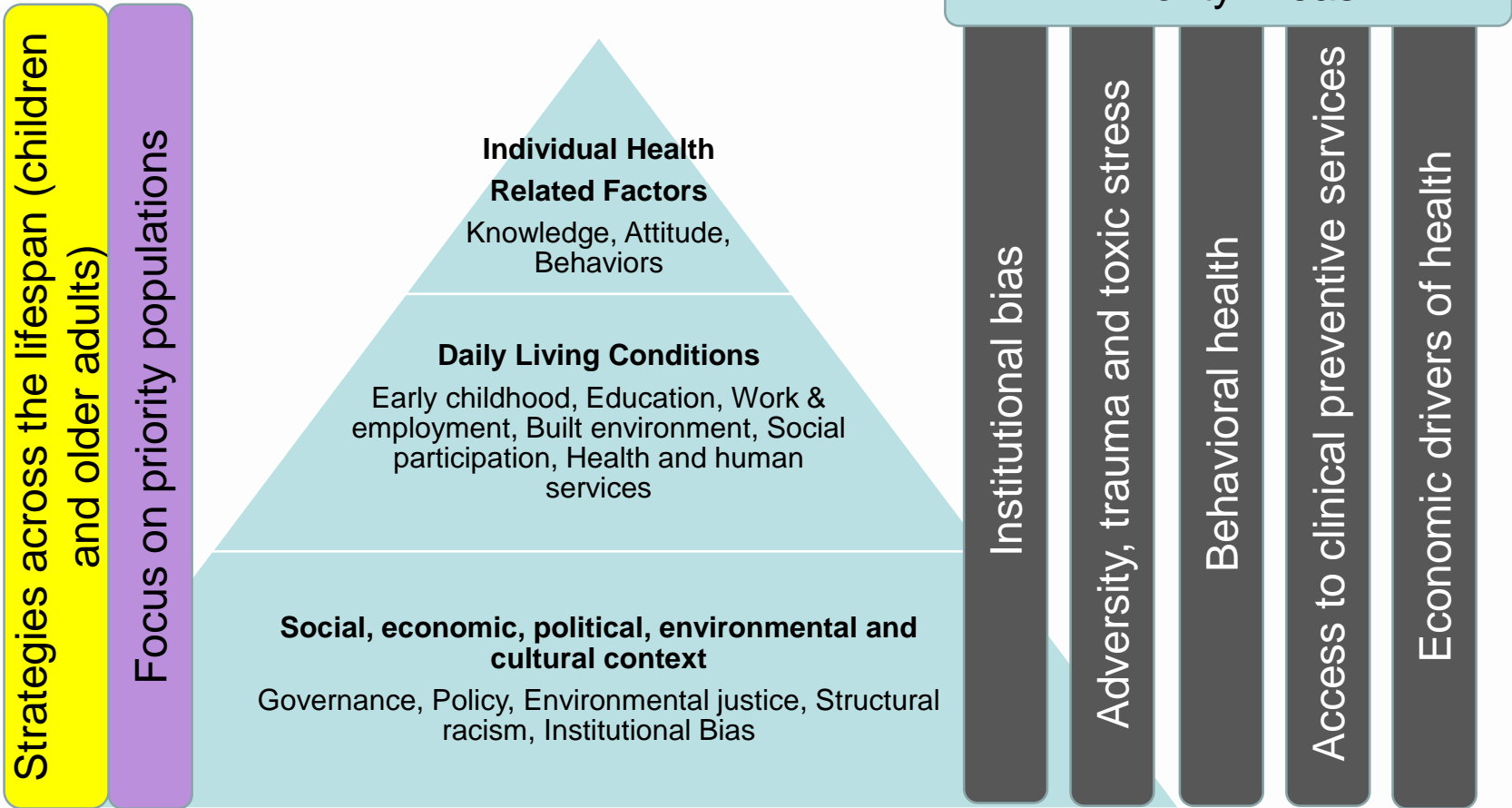
PUBLIC HEALTH DIVISION

Office of the State Public Health Director

Feedback from February meeting

- Racism and institutional bias
- Lifespan approaches
 - Emphasis on children and older adults
- Economic inequalities
- Climate change
- Crosswalk framework with health impact pyramid

2. 2020 SHIP Framework



Health Impact Pyramid

Smallest
Impact

Examples

Counseling
& Education

Public education campaign on impact of trauma on health

Clinical Interventions

Two-generation screening for ACEs

Long-lasting Protective
Interventions

Implement good behavior game in schools,

Changing the Environmental
Context

Increase community resilience, trauma
informed schools and services

Largest
Impact

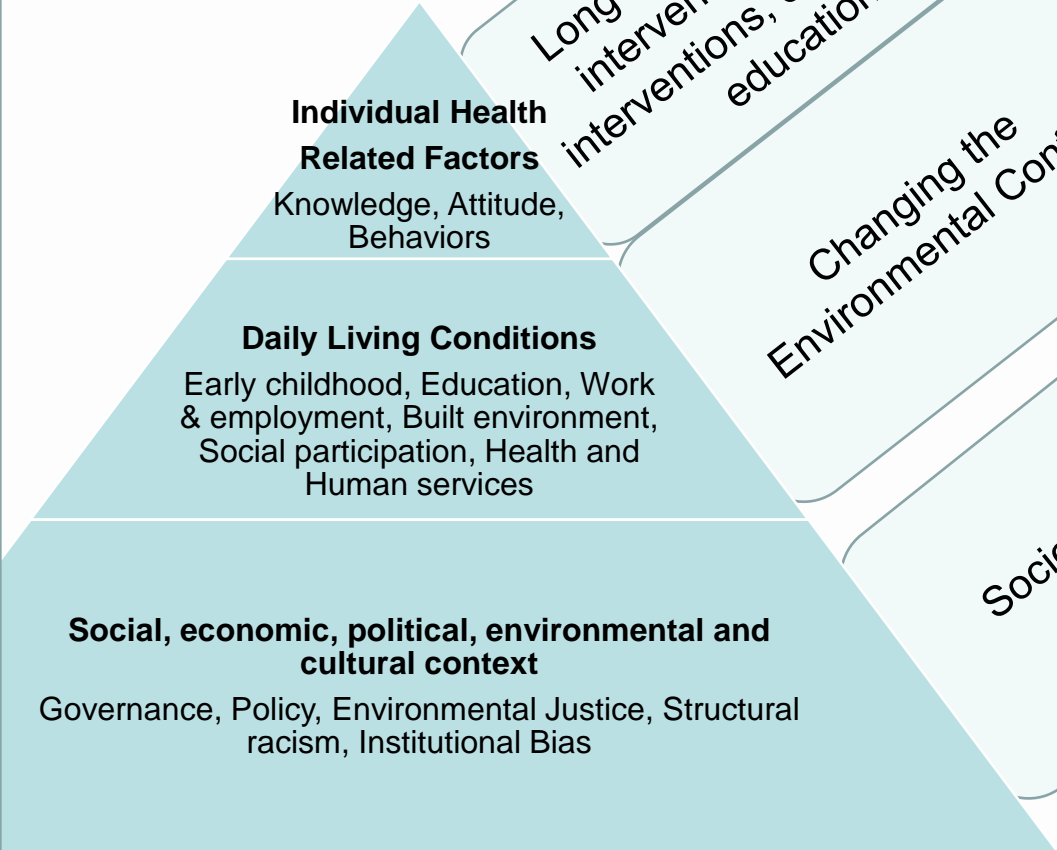
Socioeconomic Factors

Universal home visiting, paid family leave,
criminal justice reform, eliminate institutional
bias

3. Health Impact Pyramid

Strategies across the lifespan

Focus on priority populations



Long lasting protective interventions, clinical interventions, counseling & education

Changing the Environmental Context

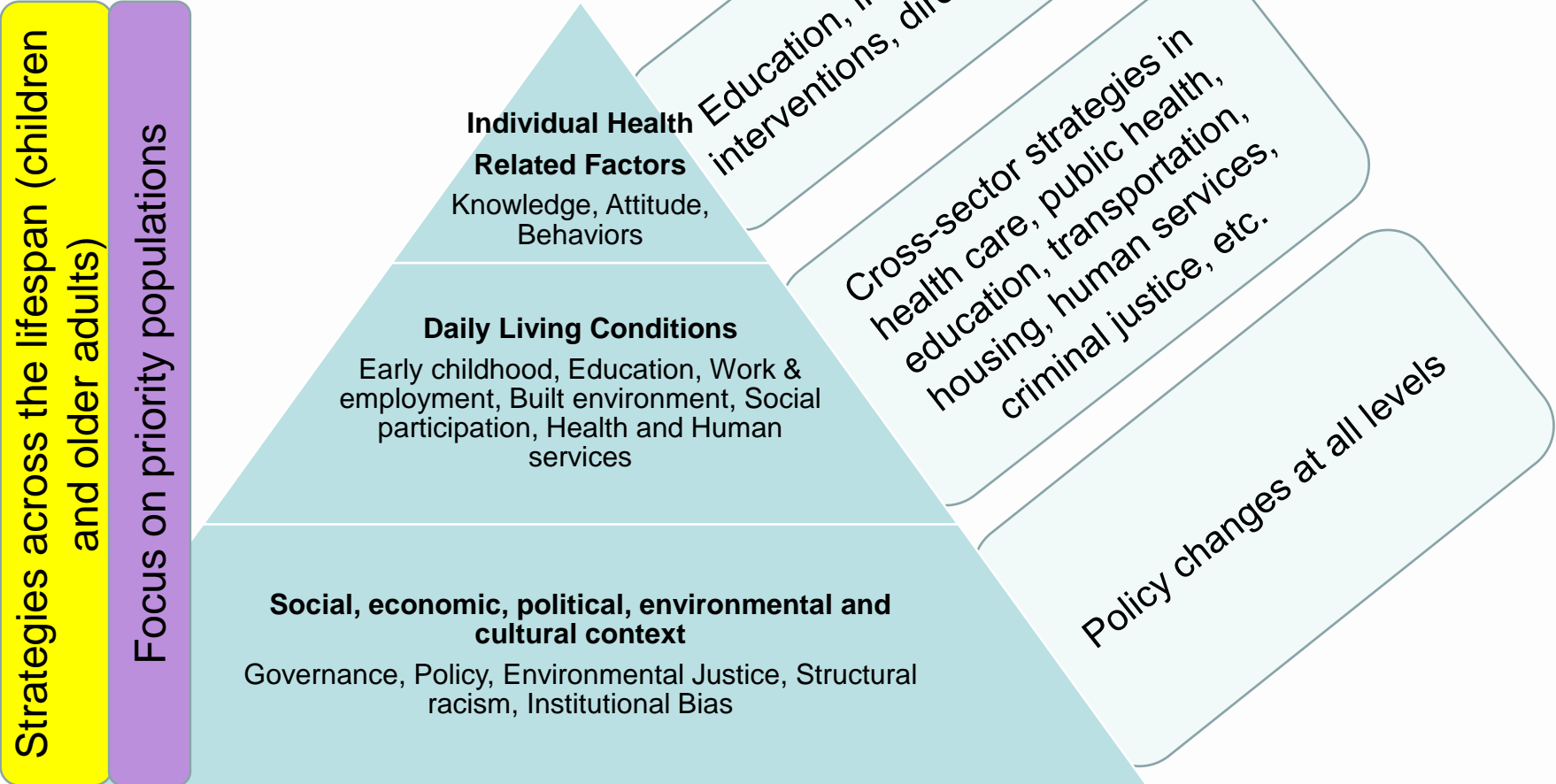
Socioeconomic Factors

Individual Health Related Factors
Knowledge, Attitude, Behaviors

Daily Living Conditions
Early childhood, Education, Work & employment, Built environment, Social participation, Health and Human services

Social, economic, political, environmental and cultural context
Governance, Policy, Environmental Justice, Structural racism, Institutional Bias

4. Strategies



Discuss and approve framework

Are there other changes to the framework you'd like to make?

Do you approve the framework?

PUBLIC HEALTH DIVISION

Office of the State Public Health Director

Oregon
Health
Authority

Criteria for strategy development

PUBLIC HEALTH DIVISION

Office of the State Public Health Director

Oregon
Health
Authority

Strategy criteria

- Similar process used to identify strategic issues. Three criteria were used:
 - Magnitude/Severity
 - Disparities
 - Upstream determinants
- Provide consistency across subcommittees when identifying strategies
- What criteria would you like to use when establishing strategies?

2020-2024 SHIP: Strategy Criteria

Selection criteria	Definition
Proven impact on disparities	<ul style="list-style-type: none">• Strategy addresses disparities in priority populations (POC, low income, disability, LGBTQ, rural/frontier)
Will achieve intended outcome	<ul style="list-style-type: none">• Right strategy for the goal• Strategy aligns with evidence-based, promising practice or is a good idea
Politically feasible	<ul style="list-style-type: none">• Ability to influence and implement a policy change
Resourced or likely to be resourced	<ul style="list-style-type: none">• Funding is available or likely to be available• Local expertise exists
Relevant to community	<ul style="list-style-type: none">• Strategy is in use in local community• Strategy is realistic and of interest from a local perspective
Alignment with other strategic initiatives (locally or federally)	<ul style="list-style-type: none">• Strategy nationally recognized or recommended
Change likely in next 5 years	<ul style="list-style-type: none">• Impacts likely to be seen within 5 years of implementation
Addresses lifespan	<ul style="list-style-type: none">• Relevant to a wide range of age• Relevant to young children or older adults
Legal	<ul style="list-style-type: none">• Currently allowed by law

Discussion

How would you prioritize these criteria?

Which of these criteria, if any, must be met?

Which of these criteria would be nice to have?

Respond @ [PollEv.com/jennysubil321](https://www.poll-ev.com/jennysubil321)

Next Steps & Final Thoughts

- Subcommittees membership will be finalized. Email Christy.j.hudson@state.or.us with additional member suggestions
- Doodle poll will be sent out to schedule subcommittee meetings
- Please complete 3-question evaluation via survey monkey: <https://www.surveymonkey.com/r/LSSRQK6>