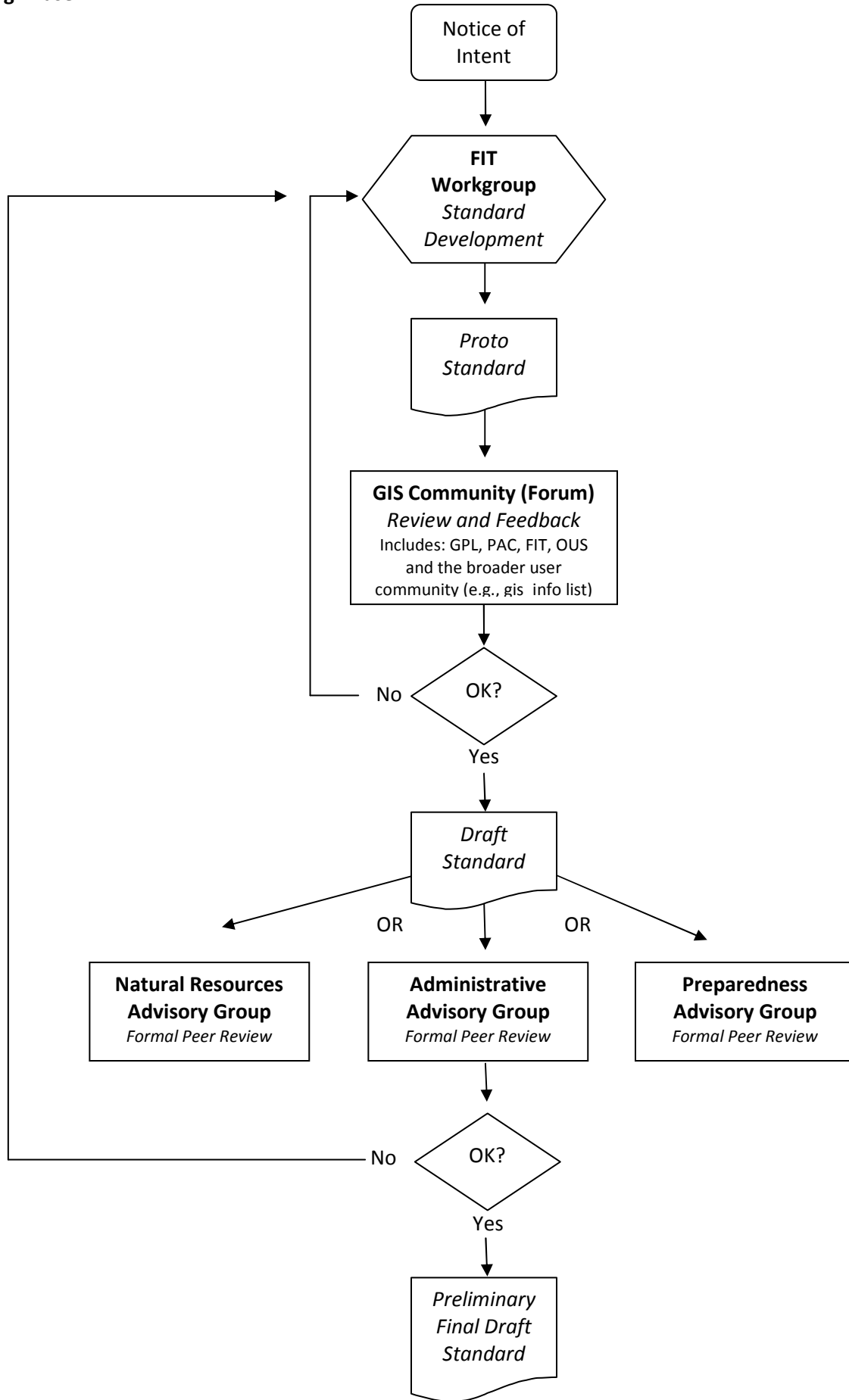


FIT Element Standard Development Process
Drafting Phase



Natural Resources Advisory Group –

<i>FIT Themes</i>	<i>Representative Agencies</i>	<i>Contacts</i>
Bioscience Elevation Geoscience Hydrography	Oregon State University University of Oregon Oregon Water Resources Department Oregon Watershed Enhancement Board Oregon State Parks Department Oregon Department of Forestry Department of Geology and Mineral Industries Oregon Department of Environmental Quality Department of State Lands Oregon Department of Fish and Wildlife United States Geological Survey Oregon Department of Agriculture Local and Regional Governments Oregon Tribes _____ _____ _____ _____	Jimmy Kagan Jay Noller Bob Harmon Ashley Seim Brady Callahan Emmor Nile Rudy Watzig Ian Madin Malavika Bishop Randy Sounhein Jon Bowers Sheri Schneider Ian Madin Brandt Melick Diana Walker _____ _____ _____

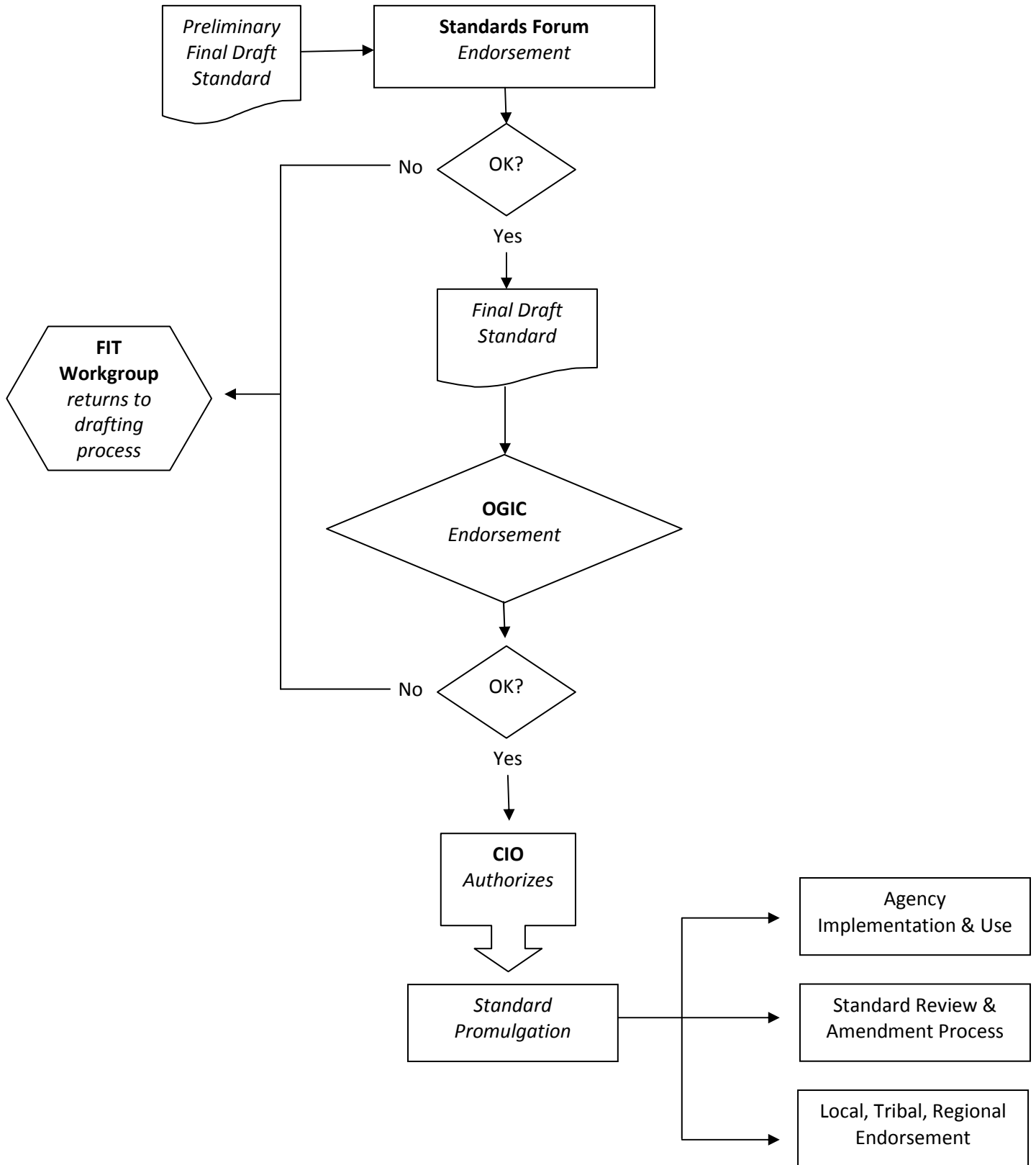
Administrative/Cadastral/Transportation Advisory Group – FIT Themes

<i>FIT Themes</i>	<i>Representatives Agencies</i>	<i>Contacts</i>
Administrative Boundaries Cadastral Geodetic Control Reference Transportation Land Use/Land Cover	Oregon Department of Agriculture Oregon Department of Forestry Oregon Department of Transportation Oregon Department of Revenue Oregon Geospatial Enterprise Office Oregon State University University of Oregon Department of Land Conservation Bureau of Land Management United States Geological Survey Port of Portland Department of Human Services Local and Regional Governments Oregon Tribes _____ _____ _____ _____	Diana Walker Emmor Nile Chad Brady Ken Bays Phil McClellan Bill Clingman Dean Anderson Cress Bates David Mather Jimmy Kagan Randy Dana Corey Plank Brent Blair Jimmy Kagan Eric Brandt Sheri Schneider Sim Ogle Laer Haider _____ _____ _____

Preparedness/Hazards/Utilities Advisory Group – FIT Themes

<i>FIT Themes</i>	<i>Representatives Agencies</i>	<i>Contacts</i>
Preparedness Utilities Hazards Climate Imagery	Oregon Department of Environmental Quality Oregon Emergency Management Department of Geology and Mineral Industries Land Conservation and Development Department of State Lands United States Geological Survey Port of Portland Local and Regional Governments Oregon Tribes _____ _____ _____ _____	Don Pettit David Stuckey Ryan Dalton Ian Madin Christine Shirley Clark Niewendorf Tom Wiley Jonathan Allen Rob Witter Bill Burns Jed Roberts Jason McClaughry Randy Sounhein Sheri Schneider Emmor Nile Sim Ogle _____ _____ _____

Endorsement Phase



FIT Advisory Group Process

Discussion Points

2/18/2011

Advisory group purpose:

- The advisory groups would only be convened virtually.
- They would be developed to provide a non-exhaustive list of potential experts in the field for the FIT elements assigned to that group.
- A FIT group that is seeking review of a standard could use these groups as a resource to obtain a diverse set of peer reviews.

Brainstorming ideas and discussion points for how the advisory groups would be utilized:

- E-mail notification to the entire group that a standard is in review and at the advisory group step - seeking mandatory reviews
- Require 3-5 responses from the group, the standard cannot move forward in the draft process unless this is documented
- Require certain review criteria, e.g. grammar, usability, etc.
- Require a review from a non-Oregon state agency, e.g. tribe, local government, or other state
- Identify that the advisory groups are not exhaustive, if a known expert is not on the advisory list, that person can be a reviewer and potentially added to the advisory group
- Obtain permission from potential advisory group members to be on the list