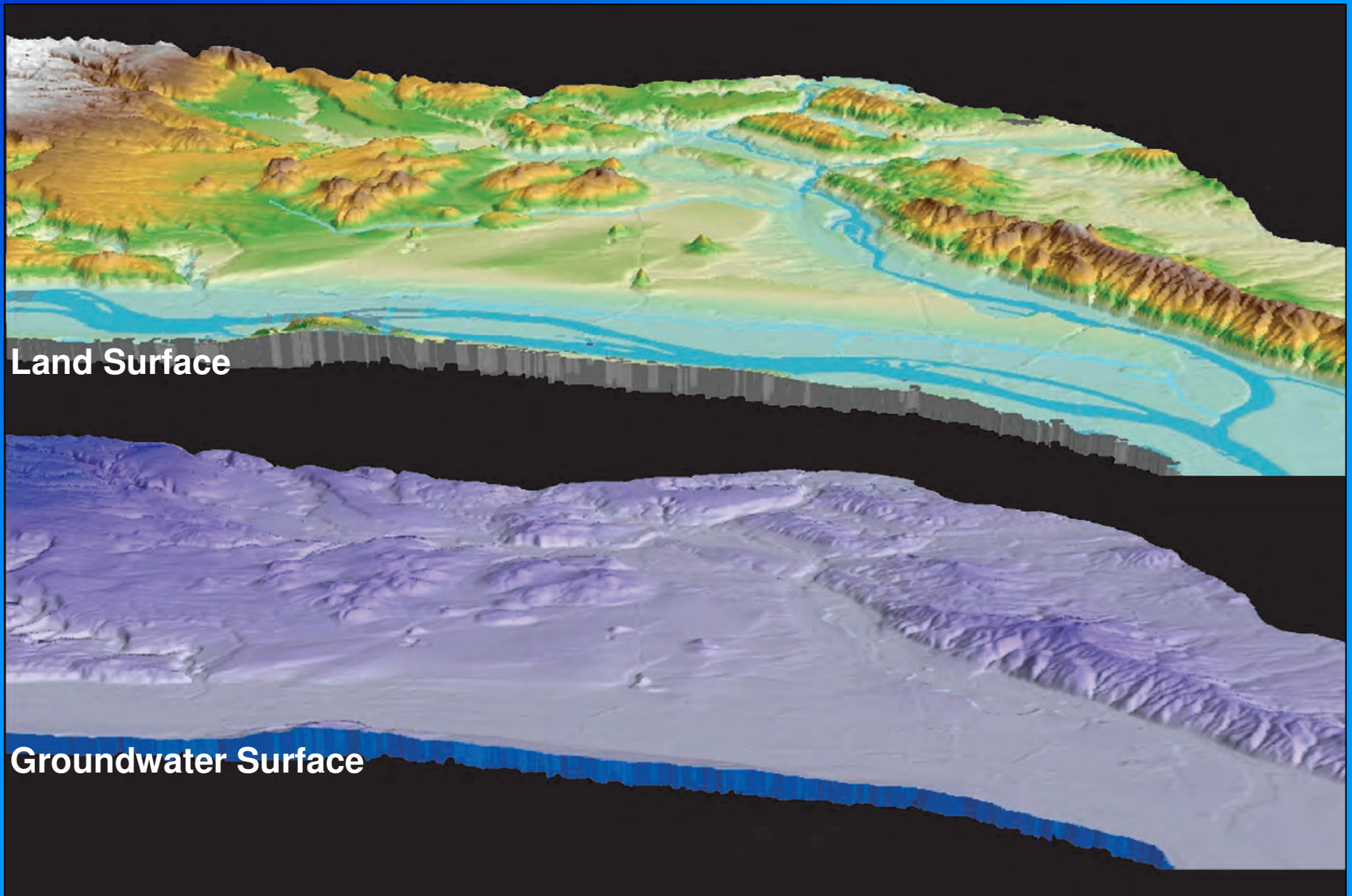
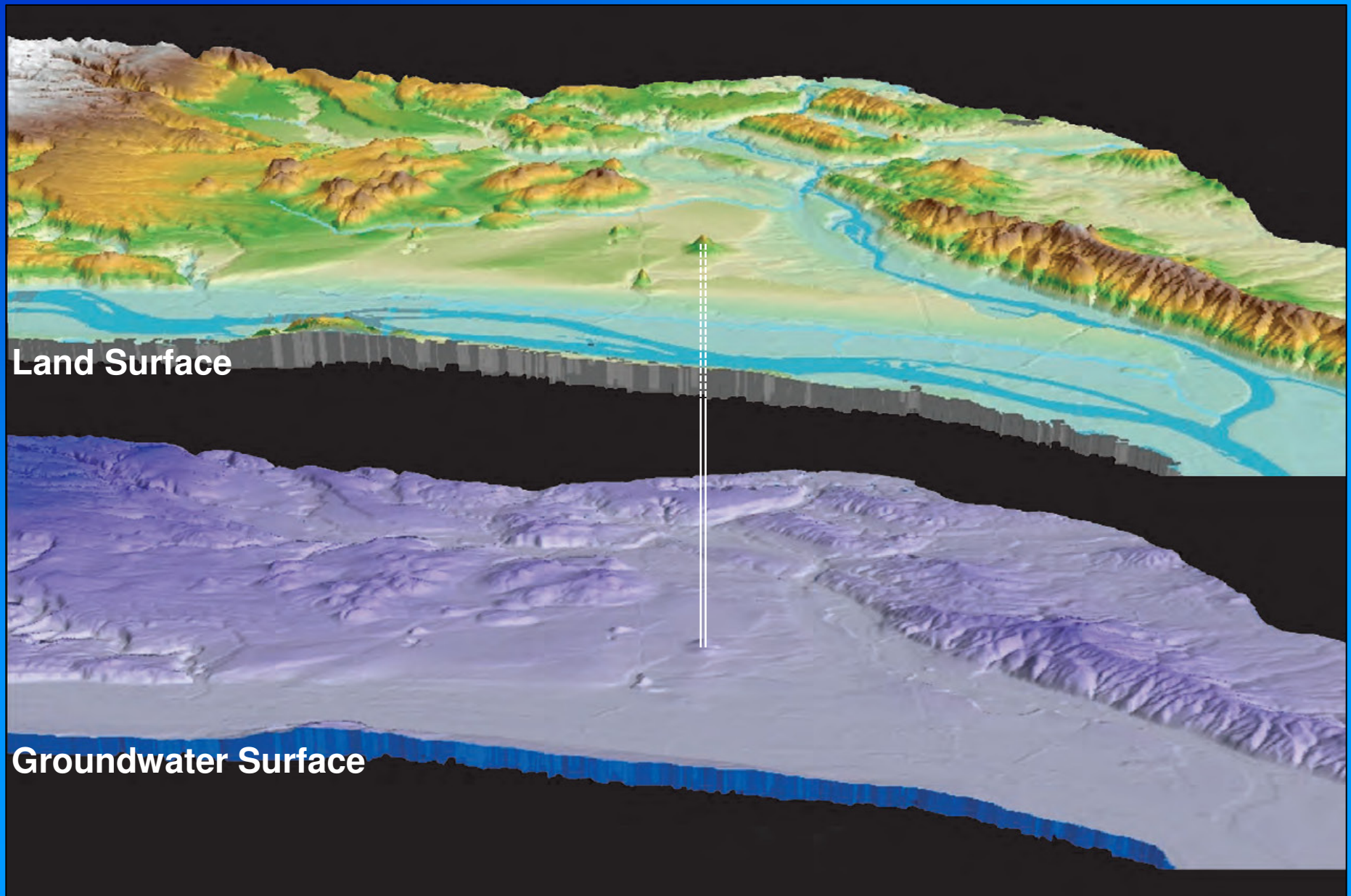


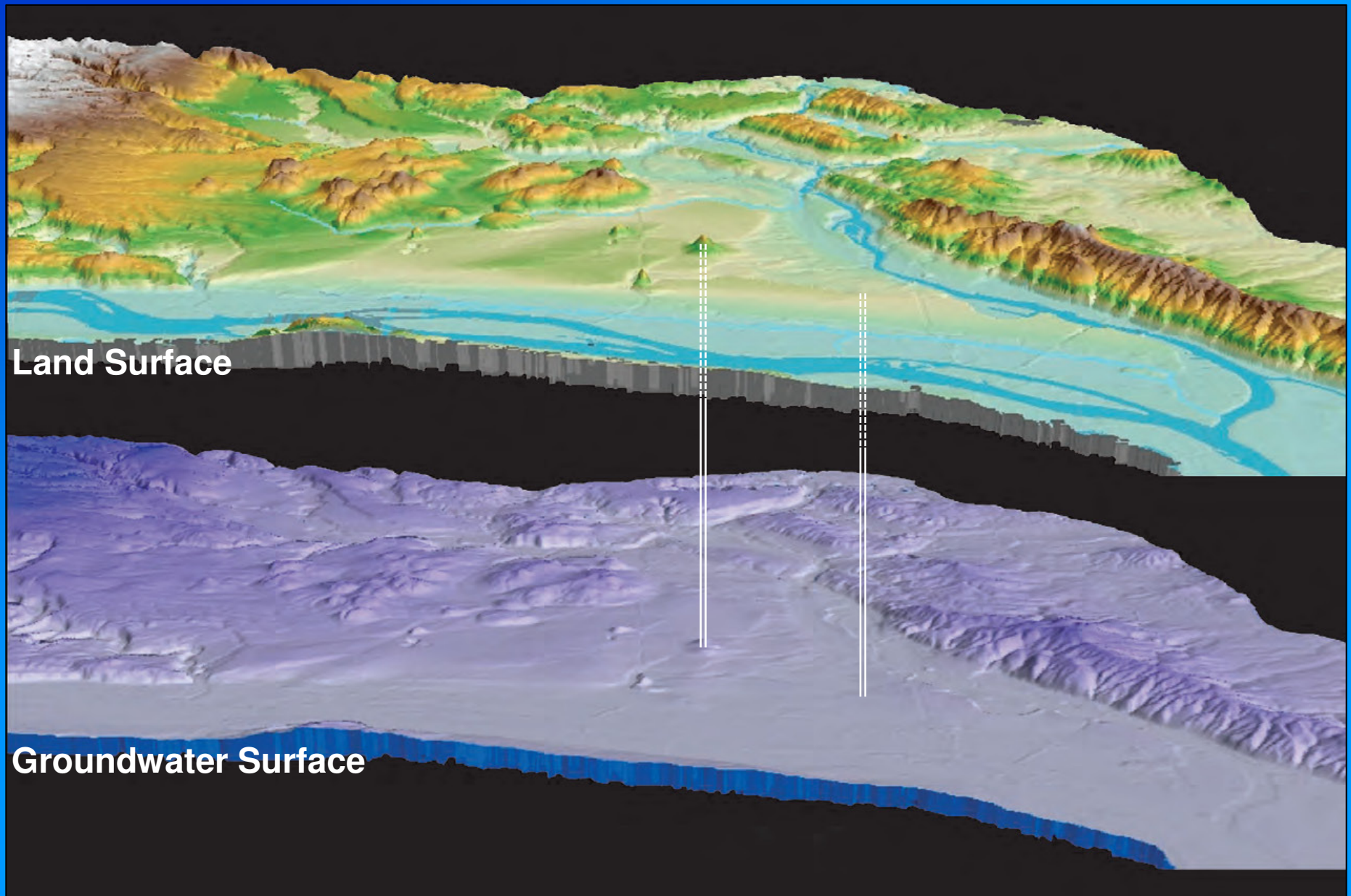
Want to determine Groundwater Surface

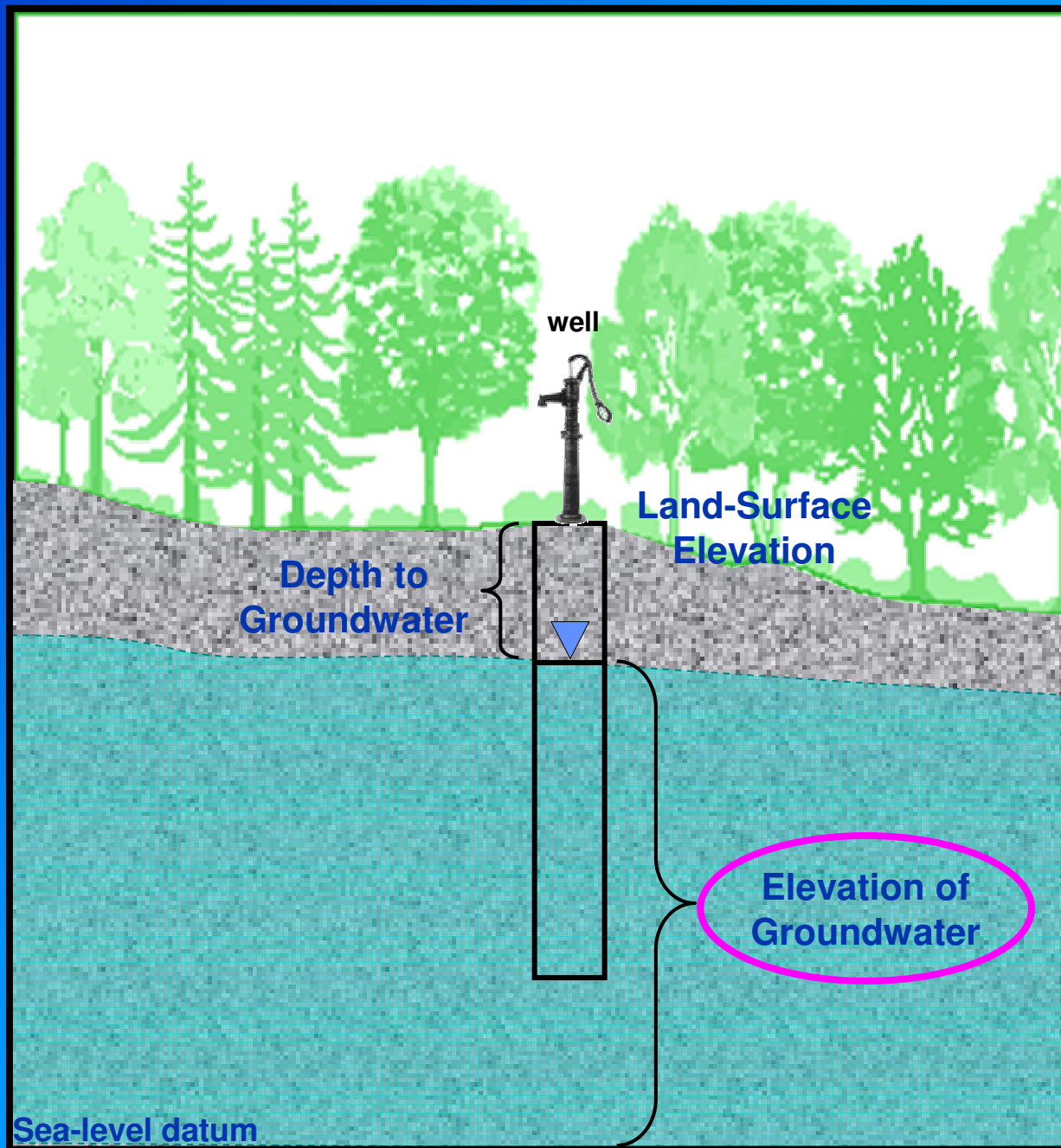


Want to determine Groundwater Surface



Want to determine Groundwater Surface

















Groundwater-Level Elevations

Calculated as the land-surface elevation minus depth to water.

- Depth to water easily measured to 0.01 feet.
- Land-surface elevation methods:

Method	Accuracy	Time	Cost
1:24,000 topo map			\$\$\$
Standard GPS			\$
10- or 30-meter DEM			\$
Land Survey			\$\$\$
Survey-Grade GPS			\$\$\$
LiDAR			\$