

LIDAR at Crater Lake National Park 2010

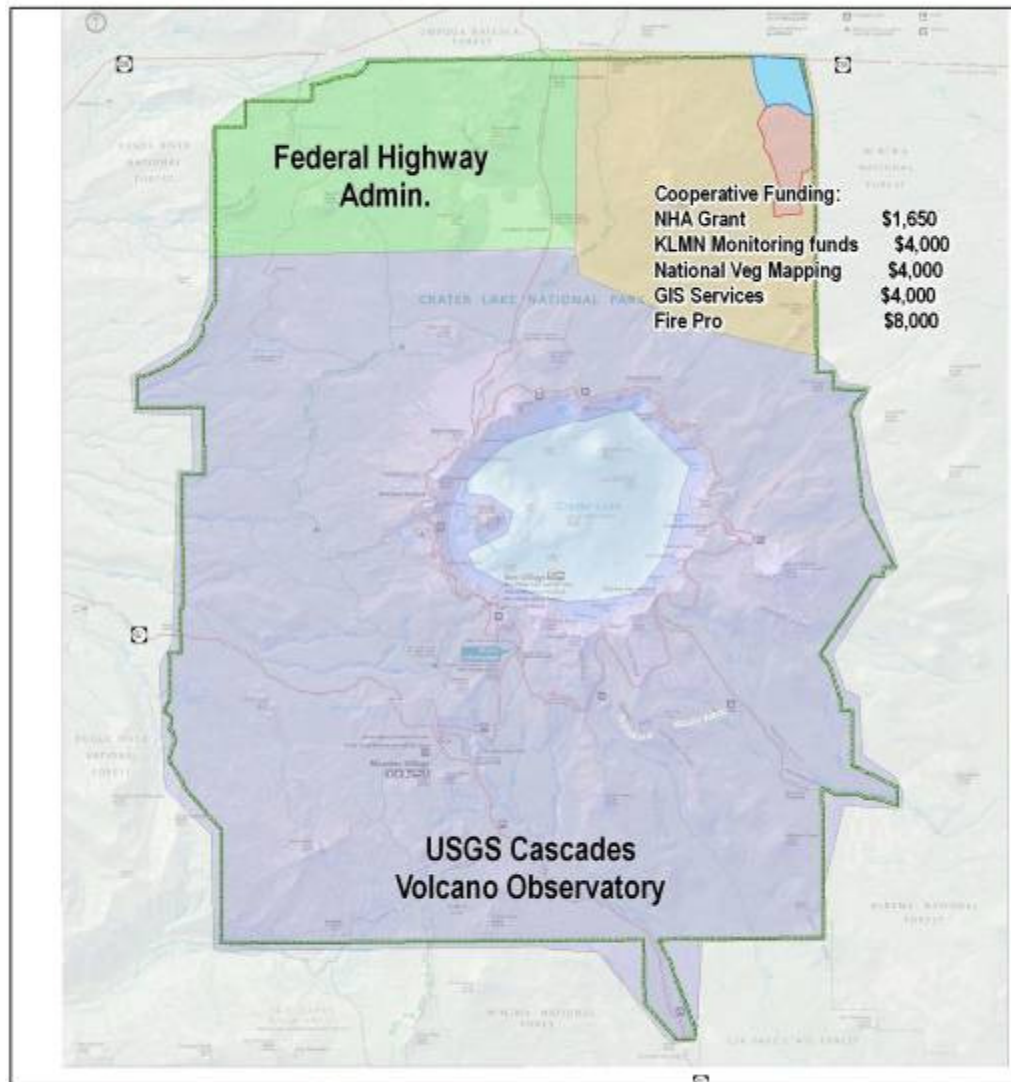
Chris Wayne

Chris_wayne@nps.gov

Crater Lake National Park

Planned Funding for LiDAR Flights 2010

National Park Service
U.S. Department of the Interior



Cooperative Funding:

NHA Grant	\$1,650
KLMN Monitoring funds	\$4,000
National Veg Mapping	\$4,000
GIS Services	\$4,000
Fire Pro	\$8,000

Process 02_21_2009 **Current Funding for LiDAR**

- USGS - CVA
- FHWA
- USGS

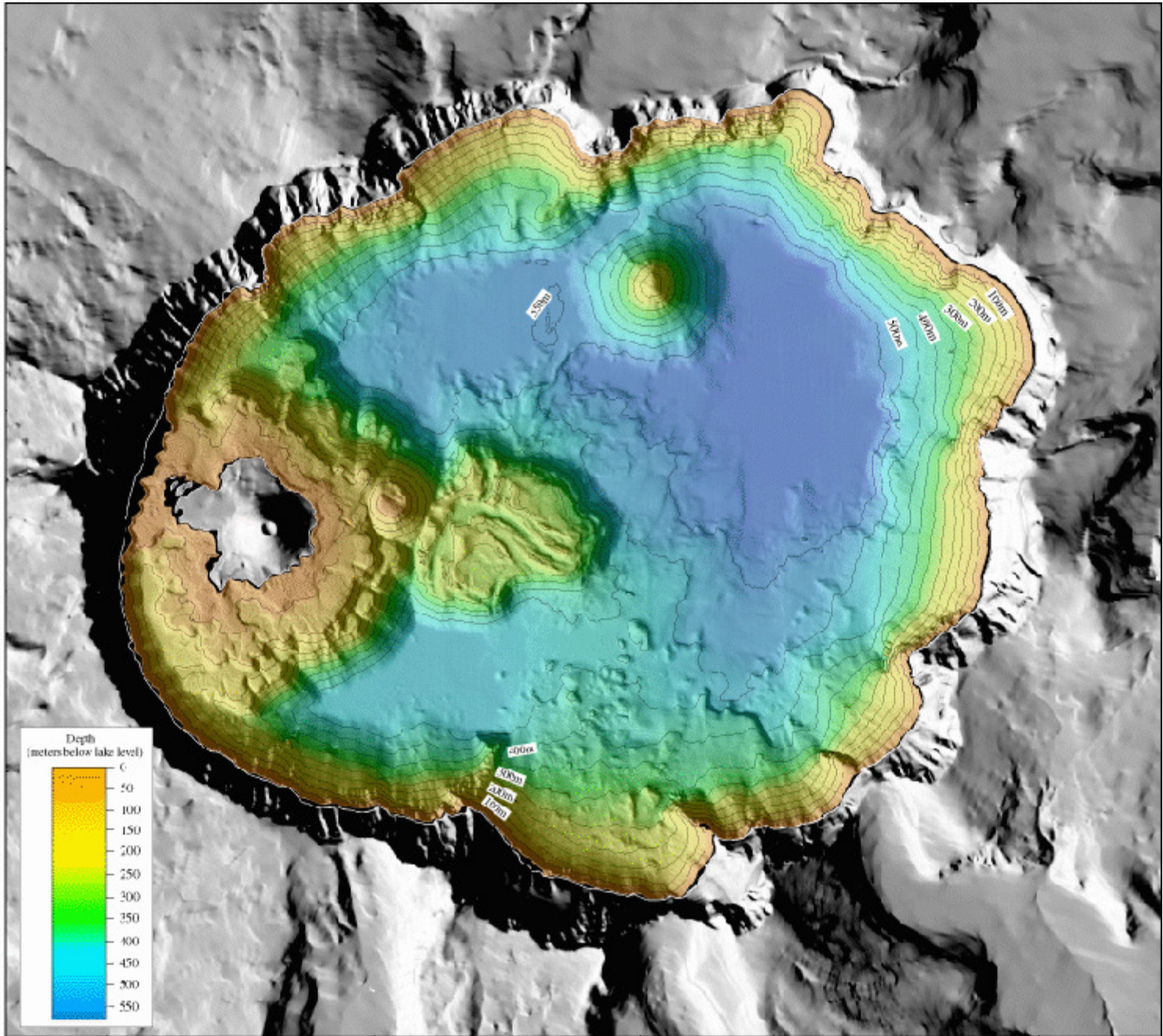
The National Park Service shall not be held liable for improper or incorrect use of the map and/or the data contained herein. No warranty is expressed or implied as to accuracy, reliability, or completeness.

Version: March 10, 2010 10:50 AM
C:\Data\2010\working\map\LiDAR2010\spatial\spatial_data\lha.mxd

Map Projection:
UTM Zone 10 North, IAD 83







1 0 1 Kilometer

Thing to talk about...

- Geology
- Veg mapping
- funding transfer mechanism
- sun cr bull trout
- fire effects monitoring
- too much snow!
- Upper Klamath Basin project