

Oregon Standards Development Effort

The Oregon Geographic Information Council (OGIC) has recently undertaken a data content standards development and approval initiative. This initiative is part of the National Spatial Data Infrastructure Framework data development effort being led in Oregon by the OGIC's Framework Implementation Team.

The OGIC Framework Implementation Team has identified 13 primary Framework data themes, containing over 100 individual data elements. The thirteen Oregon Framework themes include the seven nationally defined Framework themes, as well as six additional data themes that are widely shared or needed in Oregon. The Oregon Framework themes are:

- Geodetic Control
- Elevation
- Cadastral
- Administrative Boundaries
- Hydrography
- Transportation
- Orthoimagery
- Bioscience
- Geoscience
- Cultural
- Climate
- Utilities
- Landcover/Landuse

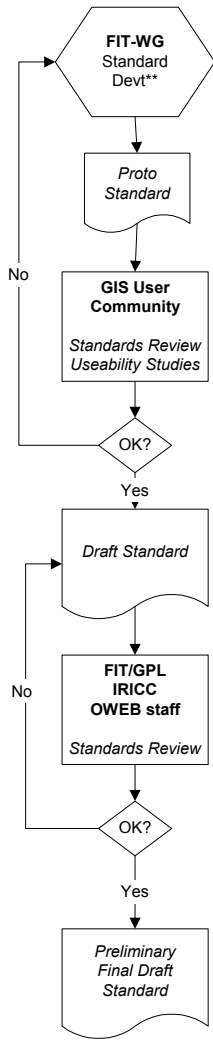
The data content standards initiative also includes some crosscutting issues, such as metadata, data integration, and data archival. The Framework Implementation Team will establish a Standards Work Group to organize and conduct the initiative. The Standards Work Group will publish a Standards Guideline document that will provide direction for the individual Framework Work Groups that will propose a standard for each Framework theme.

There are currently 10 active Framework Work Groups for ten of the thirteen Framework themes. Each Group has two items on its agenda: Develop an implementation plan for the Framework theme; and propose a data content standard for the Framework theme. The individual Framework Work Groups will conduct research to determine if a national standard or other state standard exists that will meet the needs of the GIS community in Oregon, perhaps with slight modification. The attached flowchart indicates the drafting and endorsement phases of the standards initiative. A key element of the process is the presentation of each standard for endorsement by the GIS community at the semiannual Standards Forum.

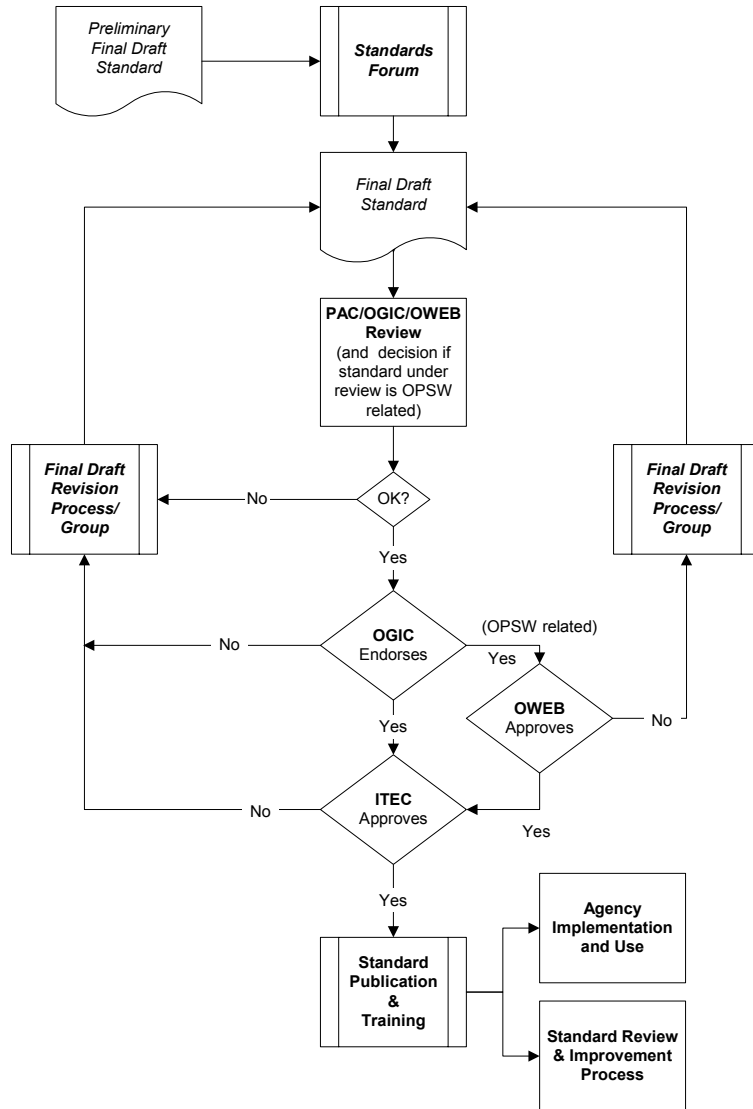
The standards process indicated in the diagram is a very inclusive process and will be driven by the needs of the GIS community. When the community has determined the appropriate standards, those standards will be endorsed at the executive level in state government, mandated for state agencies and academic institutions, and strongly recommended for adoption and use by other levels of government and the private sector.



Drafting Phase
Standard 'Owner': FIT-WG



Endorsement Phase
Standard 'Owner':
Statewide GIS Coordinator



** The relationship of any specific standard under development to the Oregon Plan for Salmon and Watersheds (OPSW) will be made explicit as early as possible.