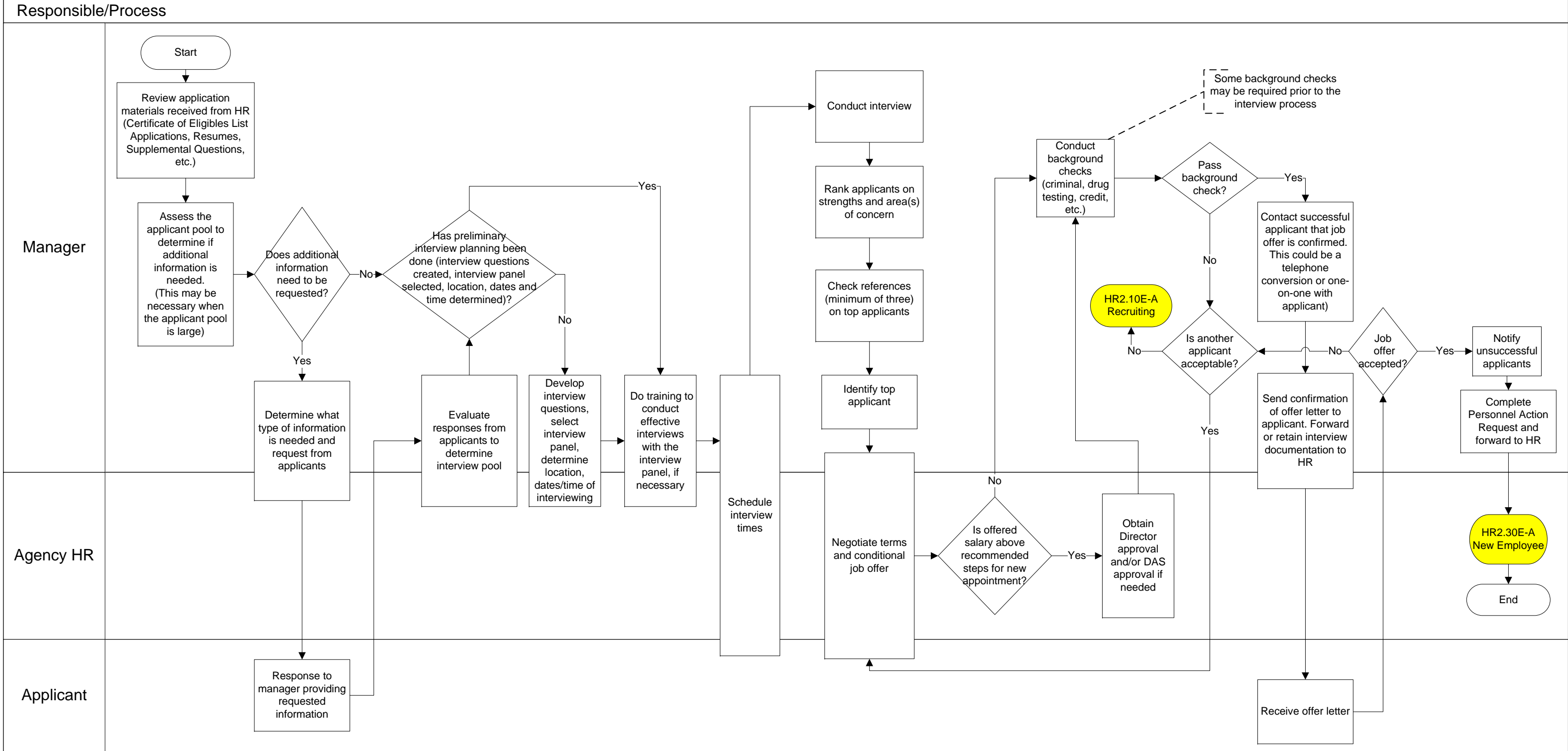


HR2.20E-A Interview – V2.0

DAS HRIS Project As-Is Process Model



- Inputs**
- Position description
 - Application materials
 - Evaluation criteria
 - ORS 240; State Policy; Collective Bargaining Agreement; Oregon Administrative Rules

- Outputs**
- Interview questions, criteria assessment forms and/or interview notes
 - Interview schedule
 - Reference release and reference check forms
 - Copies of letters or log of the calls/in-person to non-selected candidates
 - Original overall process documentation matrix or notes
 - Completed Recruitment Process Documentation Form
 - Offer Letter/Confirmation Offer
 - Criminal Background Check Request Form

- Customers**
- Job Applicants
 - Managers/Director
 - Agency HR
 - DAS
 - Employees

- Systems/Interfaces**
- Applicant/Certification System (APPL/CERT)
 - Law Enforcement Data Base (LEDS)
 - Position Personnel Data Base (PPDB)

- Reports**
- Certificate of Eligibles
 - Monthly, Annual APPL/CERT System Reports