

Go to <https://pebb.benefits.oregon.gov/members>. If you previously registered but don't remember your user name and password, select "Forgot User Name/Password"

PEBB - Benefit Management System - Windows Internet Explorer

https://a-pebbtest.state.or.us/bms_web/lp_b_login_pkg.verify_login

File Edit View Favorites Tools Help

PEBB - Benefit Management System

- Compare Plans
- PEBB Web Site
- Contact Us
- Summary Plan Description
- Forms

- o PEBB benefit number that begins with the letter P followed by eight digits
- o University-assigned ID number
- o Employee ID number that begins with the letters OR followed by seven digits
- ID Number

Select **Save & Continue** and the system will search for your User Name.

Need help? Contact [PEBB](#).

First Name

Last Name

Birth date (mm/dd/yyyy) OR (mm-dd-yyyy)

ID Type

ID Number

Disclaimer | Privacy Policy

Done Local intranet 100%

Enter in your first and last name as it appears on your Social Security card.

PEBB - Benefit Management System - Windows Internet Explorer

https://a-pebbtest.state.or.us/bms_web/lp_login_pkg.verify_login

File Edit View Favorites Tools Help

PEBB - Benefit Management System

- Compare Plans
- PEBB Web Site
- Contact Us
- Summary Plan Description
- Forms

- o PEBB benefit number that begins with the letter P followed by eight digits
- o University-assigned ID number
- o Employee ID number that begins with the letters OR followed by seven digits
- ID Number

Select **Save & Continue** and the system will search for your User Name.

Need help? Contact [PEBB](#).

■ First Name

■ Last Name

■ Birth date (mm/dd/yyyy) OR (mm-dd-yyyy)

■ ID Type

■ ID Number

Disclaimer | Privacy Policy

Done Local intranet 100%

Do not type a space after your name.

PEBB - Benefit Management System - Windows Internet Explorer

https://a-pebbtest.state.or.us/bms_web/lb_login_pkg.verify_login

File Edit View Favorites Tools Help

PEBB - Benefit Management System

- Compare Plans
- PEBB Web Site
- Contact Us
- Summary Plan Description
- Forms

- o PEBB benefit number that begins with the letter P followed by eight digits
- o University-assigned ID number
- o Employee ID number that begins with the letters OR followed by seven digits
- ID Number

Select **Save & Continue** and the system will search for your User Name.

Need help? Contact [PEBB](#).

First Name John

Last Name Johnson

Birth date (mm/dd/yyyy) OR (mm-dd-yyyy)

ID Type

ID Number

Back Save & Continue

Disclaimer | Privacy Policy

Done Local intranet 100%

Enter your birth date using the required formats.

PEBB - Benefit Management System - Windows Internet Explorer

https://a-pebbtest.state.or.us/bms_web/lpb_lg_login_pkg.verify_login

File Edit View Favorites Tools Help

PEBB - Benefit Management System

- Compare Plans
- PEBB Web Site
- Contact Us
- Summary Plan Description
- Forms

PEBB benefit number that begins with the letter P followed by eight digits

University-assigned ID number

Employee ID number that begins with the letters OR followed by seven digits

- ID Number

Select **Save & Continue** and the system will search for your User Name.

Need help? Contact [PEBB](#).

First Name

Last Name

Birth date (mm/dd/yyyy) OR (mm-dd-yyyy)

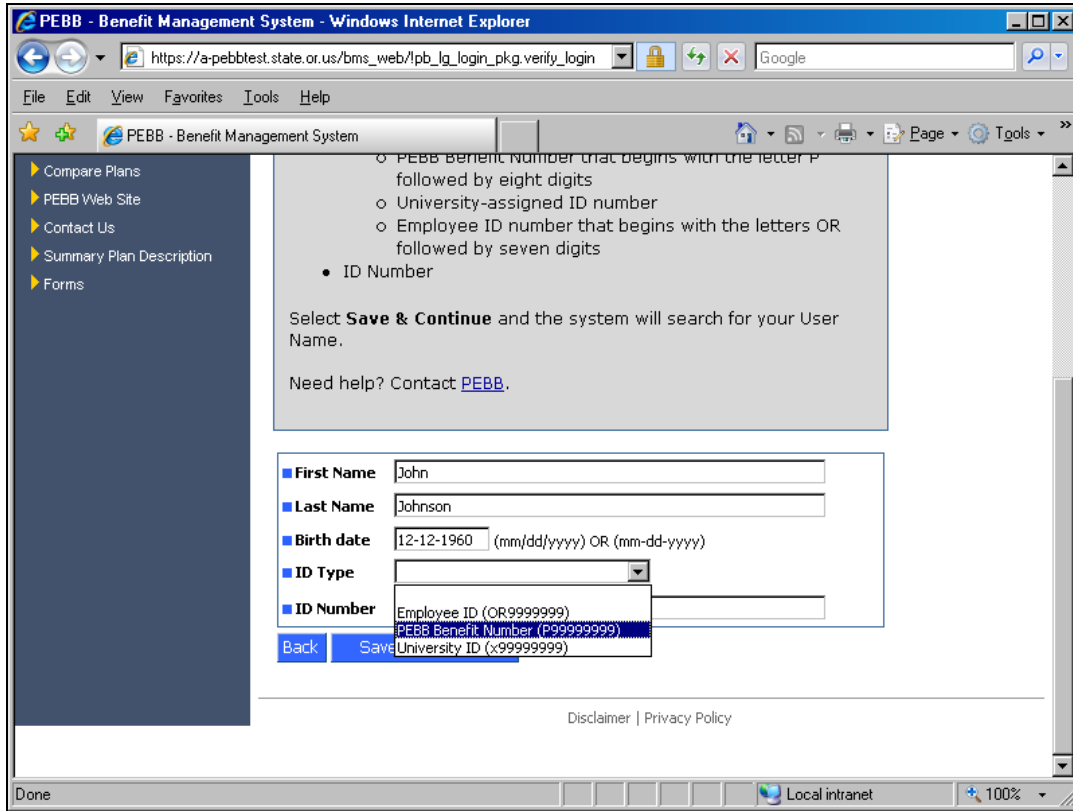
ID Type

ID Number

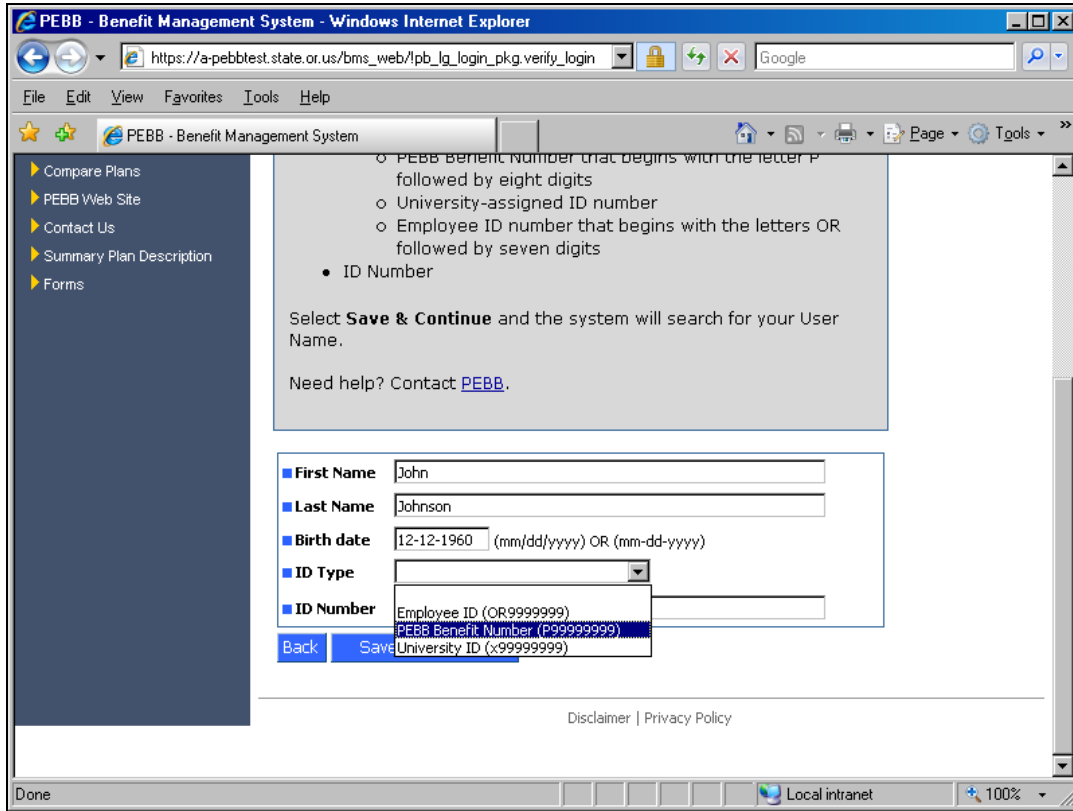
Disclaimer | Privacy Policy

Done Local intranet 100%

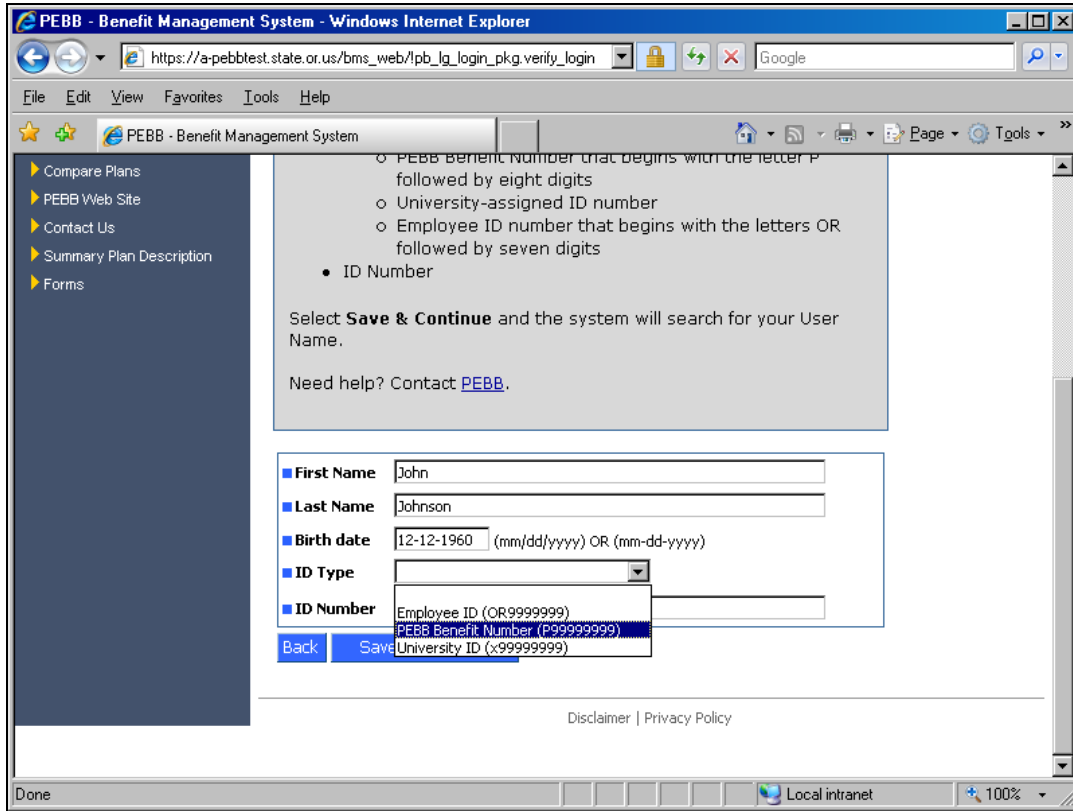
: From the drop-down menu, choose the type of ID you want to use.



Your state employee ID, which starts with OR and is on your agency pay stub.



Your Benefit Number, which starts with a P followed by nine digits. It's on the letter you received from PEBB dated September 22.



Or your university ID, if you are a university employee.

PEBB - Benefit Management System - Windows Internet Explorer

https://a-pebbtest.state.or.us/bms_web/lp_login_pkg.verify_login

File Edit View Favorites Tools Help

PEBB - Benefit Management System

- Compare Plans
- PEBB Web Site
- Contact Us
- Summary Plan Description
- Forms

- o PEBB Benefit Number that begins with the letter P followed by eight digits
- o University-assigned ID number
- o Employee ID number that begins with the letters OR followed by seven digits
- ID Number

Select **Save & Continue** and the system will search for your User Name.

Need help? Contact [PEBB](#).

First Name John

Last Name Johnson

Birth date 12-12-1960 (mm/dd/yyyy) OR (mm-dd-yyyy)

ID Type PEBB Benefit Number (P99999999)

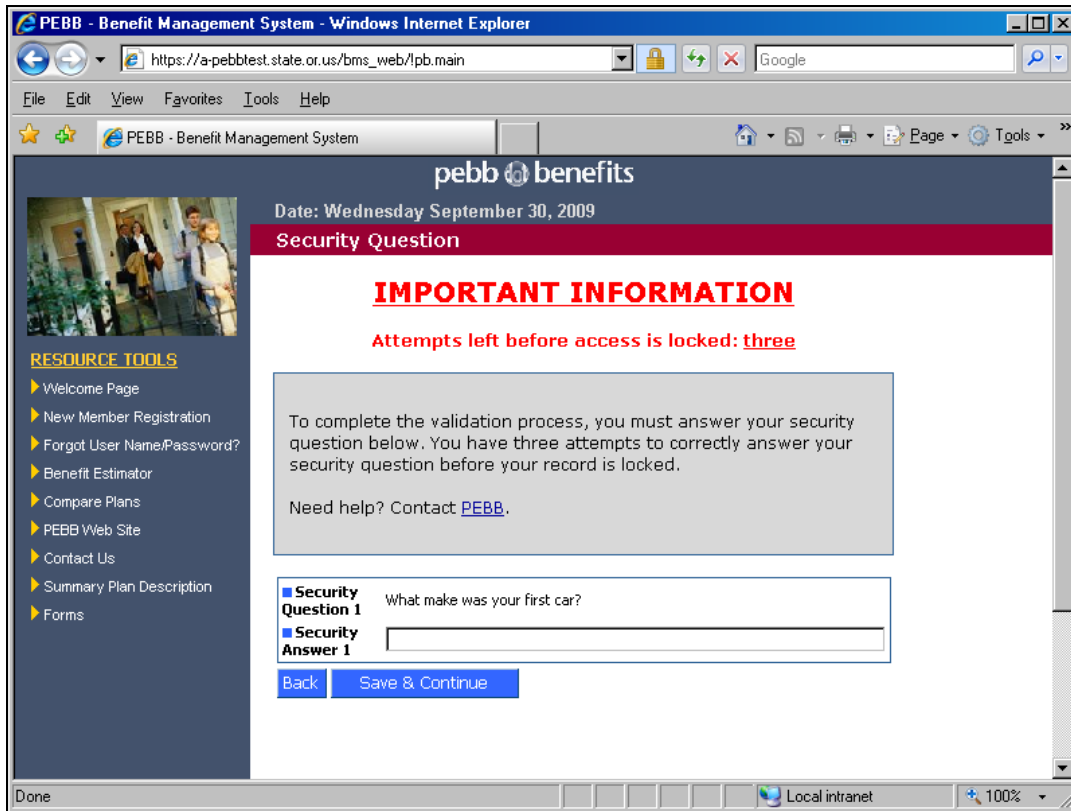
ID Number

Back Save & Continue

Disclaimer | Privacy Policy

Done Local intranet 100%

Now Select “Save and Continue.”



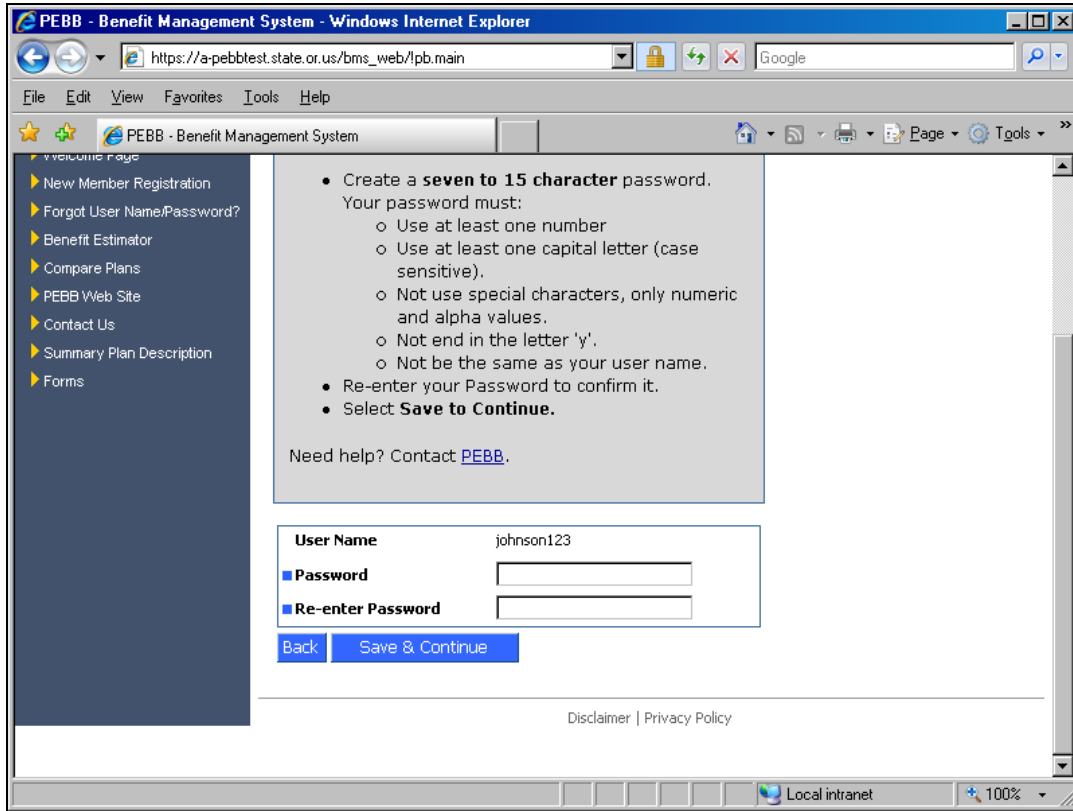
Answer one of the security questions you established when you registered. You have three attempts to answer your security question now. If the system locks you out, call PEBS at (503) 373-1102, Monday through Friday, 8 a.m. to 5 p.m. PEBS will not be available October 16, a mandatory furlough day. Now select "Save & Continue."

The screenshot shows a web browser window titled "PEBB - Benefit Management System - Windows Internet Explorer". The address bar shows the URL "https://a-pebbletest.state.or.us/bms_web/lpb.main". The page content includes a navigation menu on the left with items like "New Member Registration", "Forgot User Name/Password?", "Benefit Estimator", "Compare Plans", "PEBB Web Site", "Contact Us", "Summary Plan Description", and "Forms". The main content area features a list of password requirements:

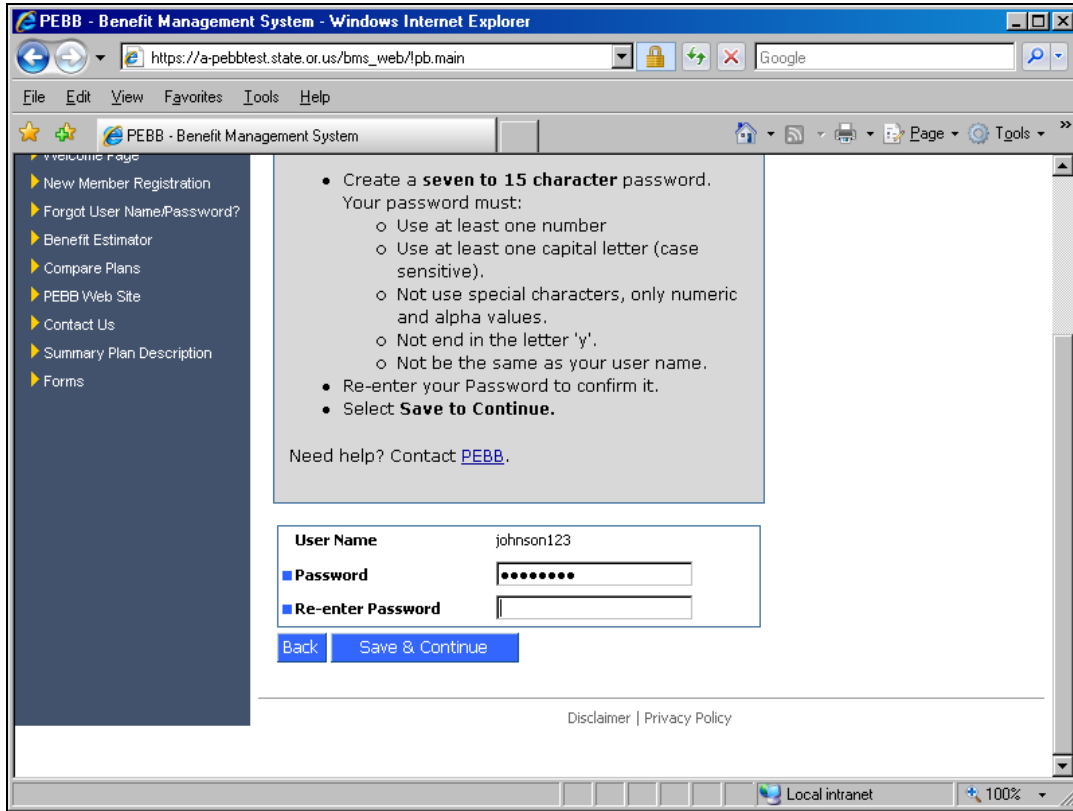
- Create a **seven to 15 character** password.
- Your password must:
 - Use at least one number
 - Use at least one capital letter (case sensitive).
 - Not use special characters, only numeric and alpha values.
 - Not end in the letter 'y'.
 - Not be the same as your user name.
- Re-enter your Password to confirm it.
- Select **Save to Continue**.

Below the requirements is a text input field for "User Name" containing "johnson123". There are two password input fields: "Password" and "Re-enter Password". At the bottom of the form are "Back" and "Save & Continue" buttons. A "Need help? Contact [PEBB](#)." link is also present. The footer contains "Disclaimer | Privacy Policy" and the system status "Local intranet" with a 100% zoom level.

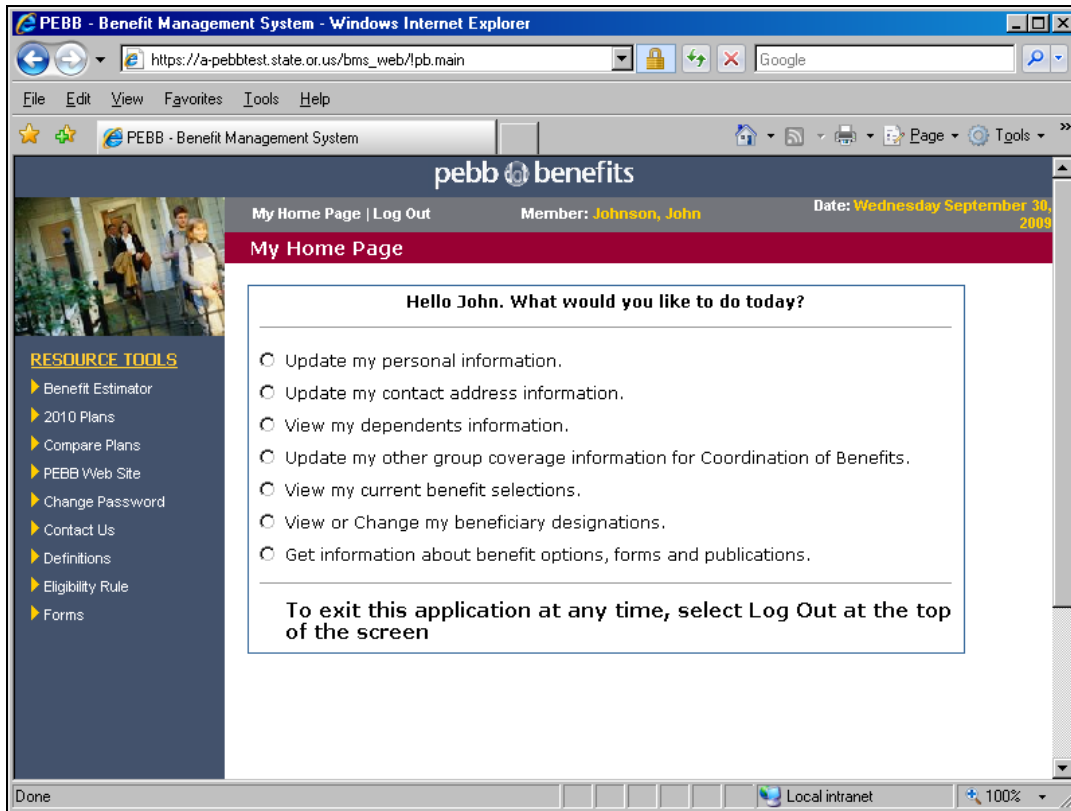
Create and confirm your password. It must be at least seven characters and no more than 15. It must contain at least one capital letter and one number.



It must not end in the letter y. No special characters.



Now select "Save & Continue"



You're at your Home Page. Before going further, turn off your pop-up blocker. Log out at any time by clicking on "Log out" at the top of the page.