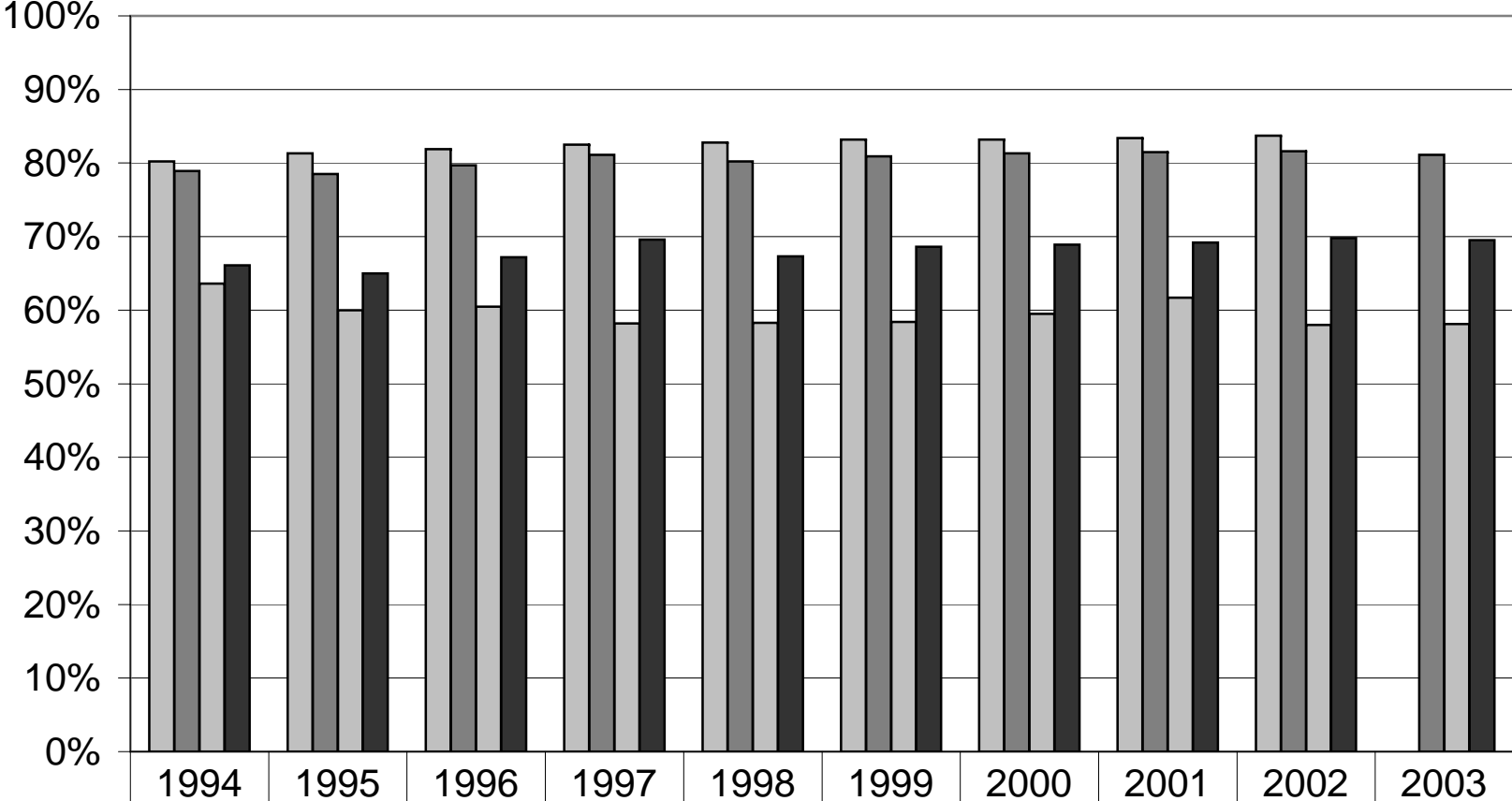


Prenatal Care in 1st Trimester



■ U.S.	80.2%	81.3%	81.9%	82.5%	82.8%	83.2%	83.2%	83.4%	83.7%	
■ Oregon	78.9%	78.5%	79.7%	81.1%	80.2%	80.9%	81.3%	81.5%	81.6%	81.1%
■ OR Self-Pay	63.6%	60.0%	60.5%	58.2%	58.3%	58.4%	59.5%	61.7%	58.0%	58.1%
■ OR Medicaid	66.1%	65.0%	67.2%	69.6%	67.3%	68.6%	68.9%	69.2%	69.8%	69.5%