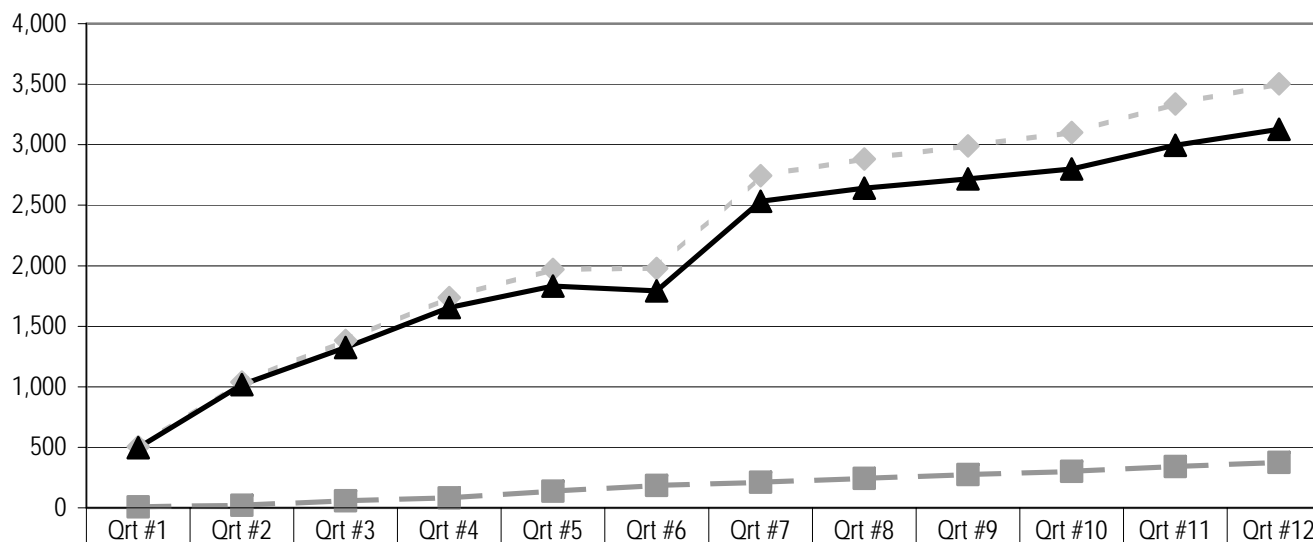


## SPD Appendix C

**Adult Support Services  
Summary of Enrollments and Terminations in Brokerages  
11/1/01 through 10/31/04**



- ◆ - Total Enrollments	505	1040	1382	1738	1970	1978	2743	2882	2991	3101	3336	3504
- ■ - Total Terminations	8	22	57	83	137	185	211	242	274	302	341	376
- ▲ - Net Enrollments	497	1018	1325	1655	1833	1793	2532	2640	2717	2799	2995	3128