

	1991	1992	1993	1994	1995	1996	1997	1998	1999	2000	2001	2002	2003	2004	2005	2006	2007	2008§	2009§	Total
Gilliam	0	0	0	0	0	0	0	0	0	0	0	0	0	0	0	0	0	0	0	0
Grant	0	0	0	0	0	0	0	0	0	0	0	0	0	0	0	0	0	0	0	0
Harney	0	0	0	0	0	0	0	0	0	0	0	0	0	0	0	0	0	0	0	0
Hood River	0	0	0	0	0	0	0	0	0	0	0	0	0	0	0	0	0	0	0	0
Jackson	0	0	1	1	0	0	0	0	0	0	0	1	0	0	0	0	0	1	2	6
Jefferson	0	0	0	0	0	0	0	0	0	0	0	0	0	0	0	0	0	0	0	0
Josephine	0	0	0	0	0	1	0	0	0	0	0	0	0	0	0	0	0	0	0	1
Klamath	0	0	0	1	0	0	0	0	0	0	0	0	0	1	0	0	0	0	0	2
Lake	0	0	0	0	0	0	0	0	0	0	0	0	0	0	0	0	0	0	0	0
Lane	1	1	1	0	1	0	0	0	2	0	0	1	0	0	0	0	1	0	1	9
Lincoln	0	0	0	0	0	0	0	0	0	0	1	0	0	0	0	0	0	1	0	2
Linn	0	0	0	0	0	1	0	0	0	0	0	0	0	0	0	0	1	0	0	2
Malheur	0	1	0	0	0	0	0	0	0	0	0	0	0	0	0	0	0	0	0	1
Marion	0	0	2	0	1	1	0	0	0	0	1	1	0	0	0	4	0	0	0	10
Morrow	0	0	0	0	0	0	0	0	0	0	0	0	0	0	0	0	0	0	0	0
Multnomah	0	0	1	0	3	2	1	1	0	0	0	1	0	1	2	1	1	1	0	15
Polk	0	0	0	0	0	0	0	0	1	0	0	0	0	0	0	0	0	0	0	1
Sherman	0	0	0	0	0	0	0	0	0	0	0	0	0	0	0	0	0	0	0	0
Tillamook	0	0	0	0	0	0	0	0	0	0	0	0	0	0	0	0	0	0	0	0
Umatilla	1	0	0	0	0	0	0	0	0	0	0	0	1	1	0	0	0	0	0	3
Union	0	0	0	0	0	0	0	0	0	0	0	0	0	0	1	0	0	0	0	1
Wallowa	0	0	0	0	0	0	0	0	0	0	0	0	0	0	0	0	0	0	0	0
Wasco	0	0	0	0	0	0	0	0	0	1	0	0	0	0	0	0	0	0	0	1
Washington	0	0	1	0	0	0	0	1	1	0	1	1	1	0	0	1	0	0	0	7
Wheeler	0	0	0	0	0	0	0	0	0	0	0	0	0	0	0	0	0	0	0	0
Yamhill	0	0	0	1	0	0	0	0	0	0	0	0	0	1	0	0	0	0	0	2
**Out of state/Unk. CO.	0	0	0	0	0	2	0	0	1	3	0	0	1	0	0	0	0	0	0	7
Total																				102

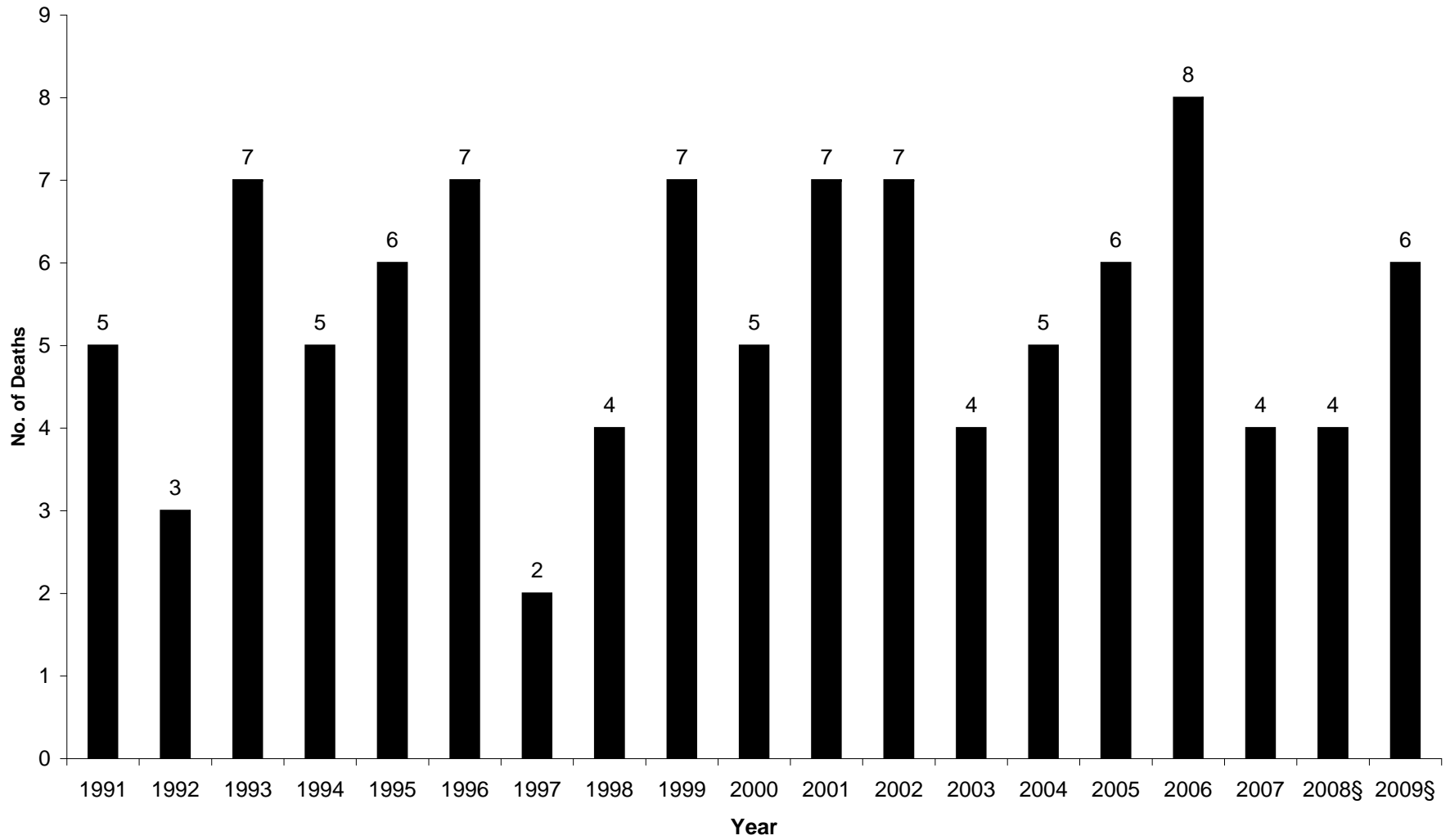
*Active surveillance of Oregon physicians was conducted in 1996 covering 1991-1996.

**Out of state death/delayed death record update

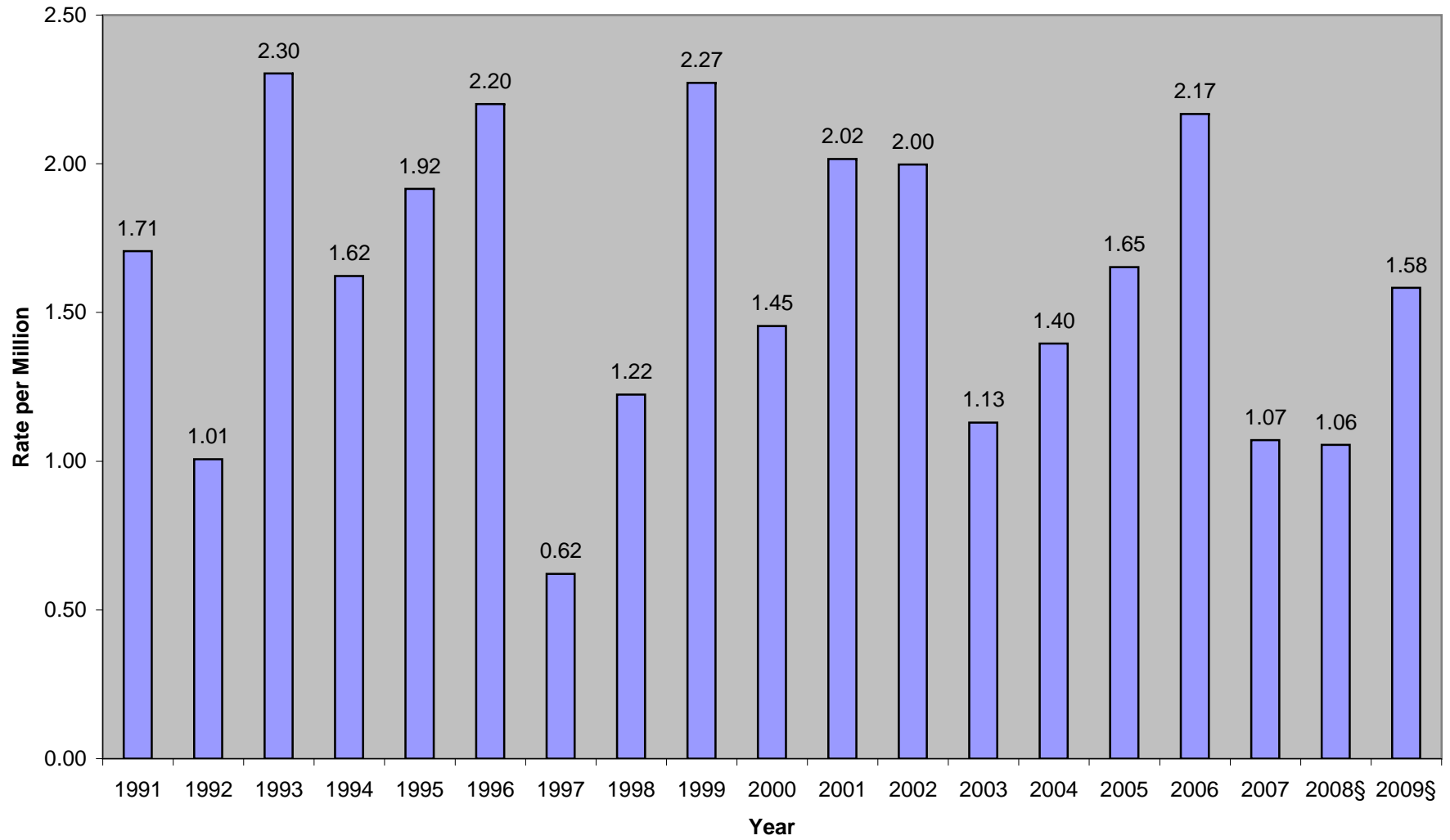
§Data for 2008, and 2009 are provisional.

Death totals include suspect, probable and autopsy confirmed cases of CJD. There have been no deaths due to vCJD in Oregon.

CJD Deaths by Year, Oregon 1991-2009



CJD Mortality Rates by Year, Oregon 1991-2009



CJD Deaths - Overall Age Trends

