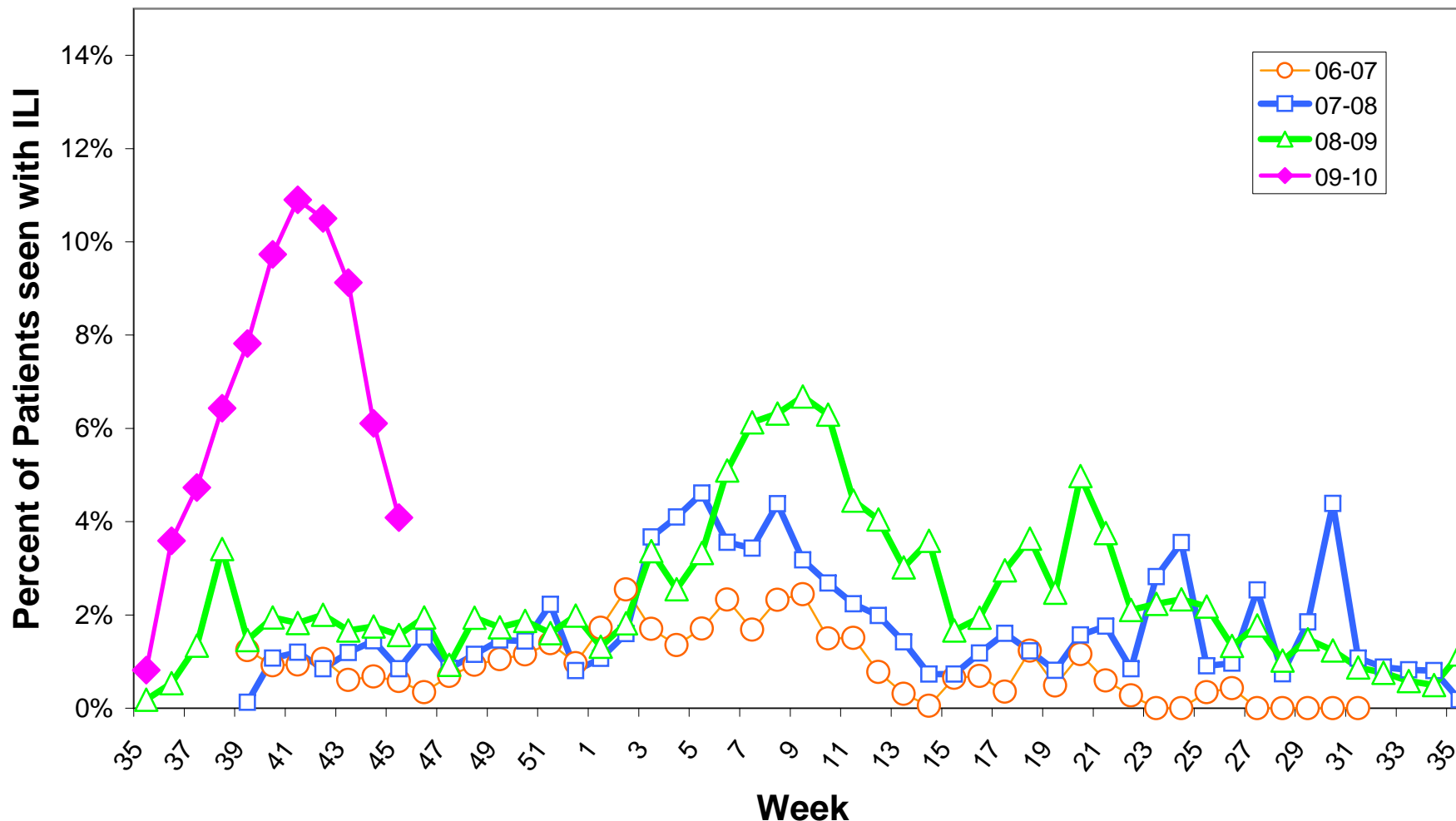


Oregon Outpatient Influenza-Like Illness Surveillance Network (ILINet) Percent of Outpatients with Influenza-like Illness (ILI) 2006-07, 2007-08, 2008-09, 2009-10



Surveillance weeks (1-52) run from Sunday through Saturday.

Sentinel providers report the number of patients seen with influenza-like illness as well as total number of patients seen each week.