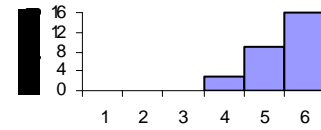
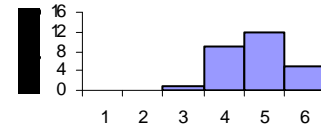




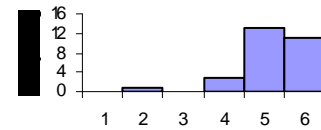
9. The goals of the EPHT program are important.



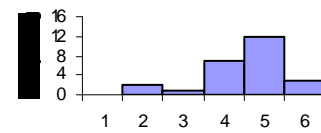
10. The goals of the EPHT program are feasible.



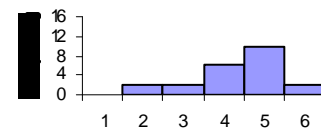
11. The EPHT program will benefit from contributions of OTAG members



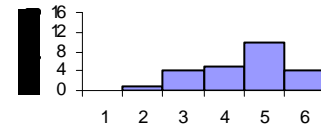
12. The OTAG has had the meeting time needed to discuss the issues.



13. The OTAG has had the meeting time needed to make good recommendations.



14. The EPHT program is responsive to OTAG recommendations.



	n	Mean	Standard Dev.
Q1	16	5.1	0.9
Q2	17	4.5	1.4
Q3	13	4.3	1.1
Q4	16	4.1	1.1
Q5	14	5.1	0.5
Q6	17	5.2	0.7
Q7	17	4.2	1.4
Q8	16	4.9	1.2
Q9	18	5.5	0.7
Q10	18	4.7	0.7
Q11	18	5.1	1.1
Q12	14	4.5	1.1
Q13	12	4.4	1.1
Q14	14	4.6	1.2

## Additional comments:

May be necessary to involve more university researchers in the group to accomplish the goals of EPHT

Info desired on taking data to action plans, how to get resources

It's frustrating to find that many questions are answered by "because CDC insists we do it"

Add the canopy layer

I don't know how OTAG has any effect on project. Seems like most effect is by DUNC group who meets more frequently and has time to discuss

Suggest using LPHA to facilitate taking info to local policy makers and interest groups to develop resources

New work on build environment and climate change seems very good