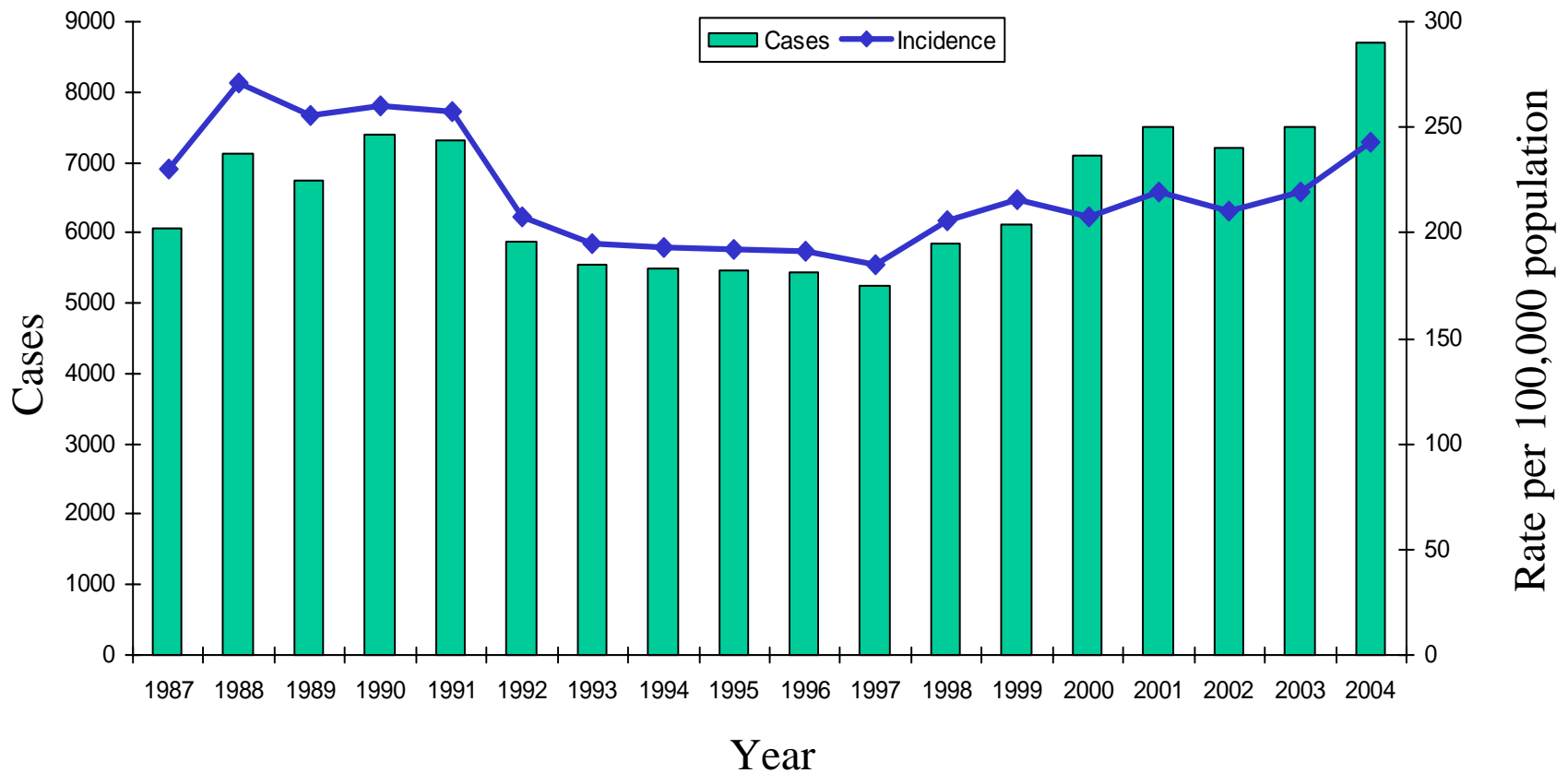


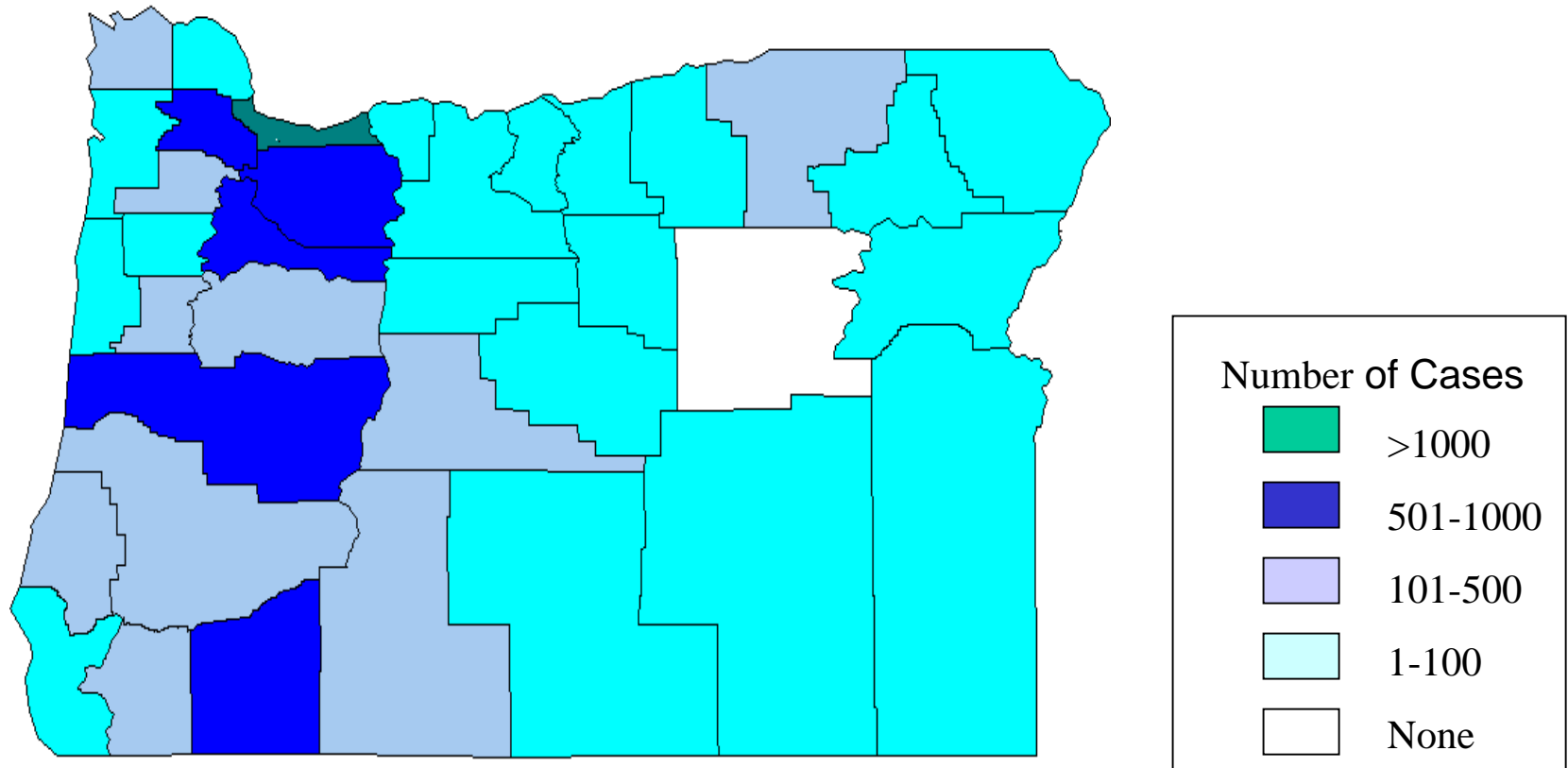
Oregon  
Sexually Transmitted Disease Program  
Chlamydia Case Data  
2004

# Chlamydia Cases and Incidence Oregon, 1987-2004



Note: Chlamydia became reportable in Oregon on July 1, 1987. Case number and rate presented for 1987 were calculated by doubling the cases reported for the last six months of 1987.

# Chlamydia Cases by County of Residence Oregon, 2004



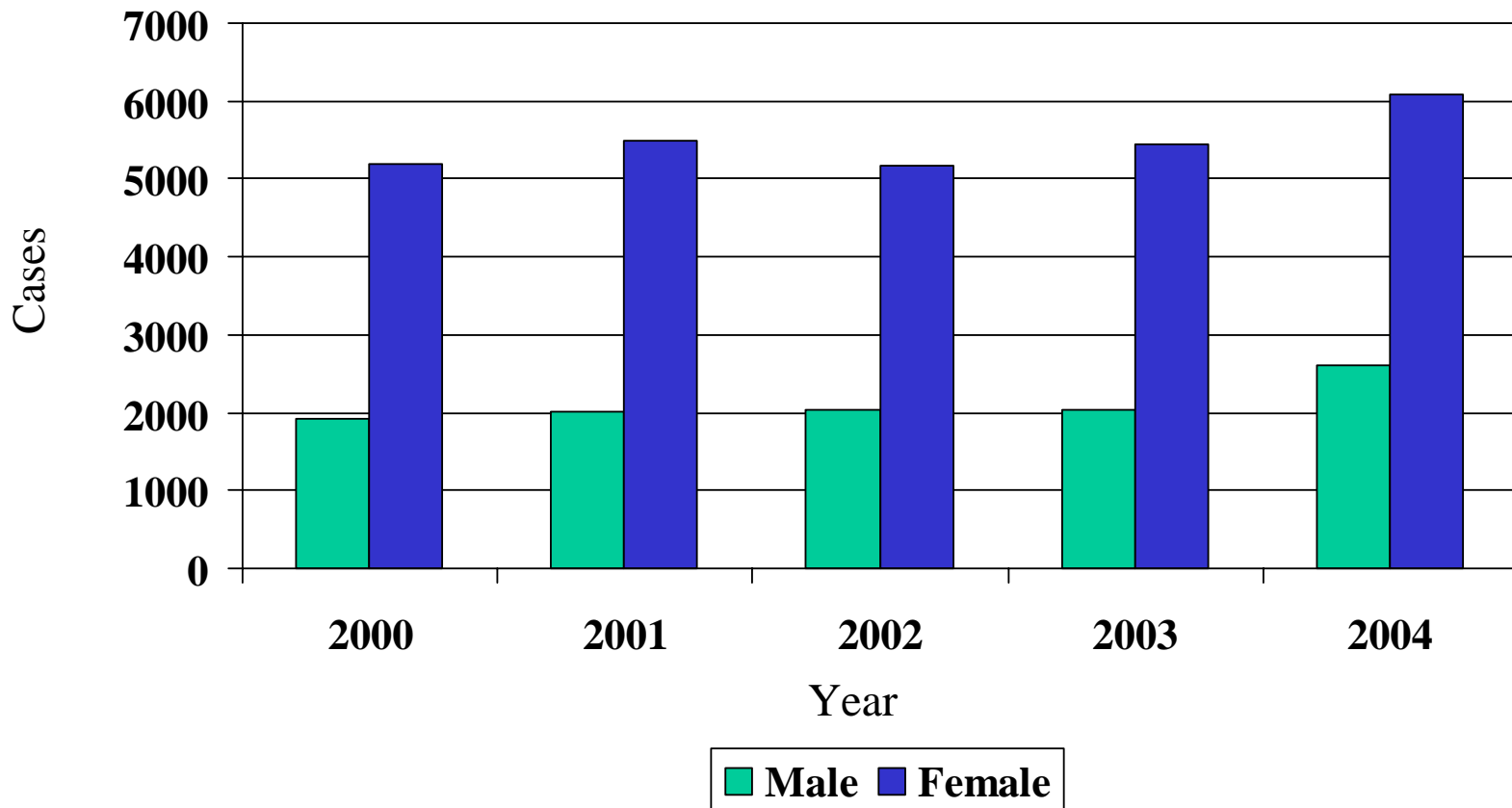
# Chlamydia in the most affected Counties Oregon, 2004

<b>County</b>	<b>Cases</b>	<b>% of State</b>	<b>Incidence*</b>
Multnomah	2623	30%	382.4
Washington	966	11%	201.2
Marion	901	10%	301.9
Lane	841	10%	252.3
Total of 4 counties	5331	61%	---

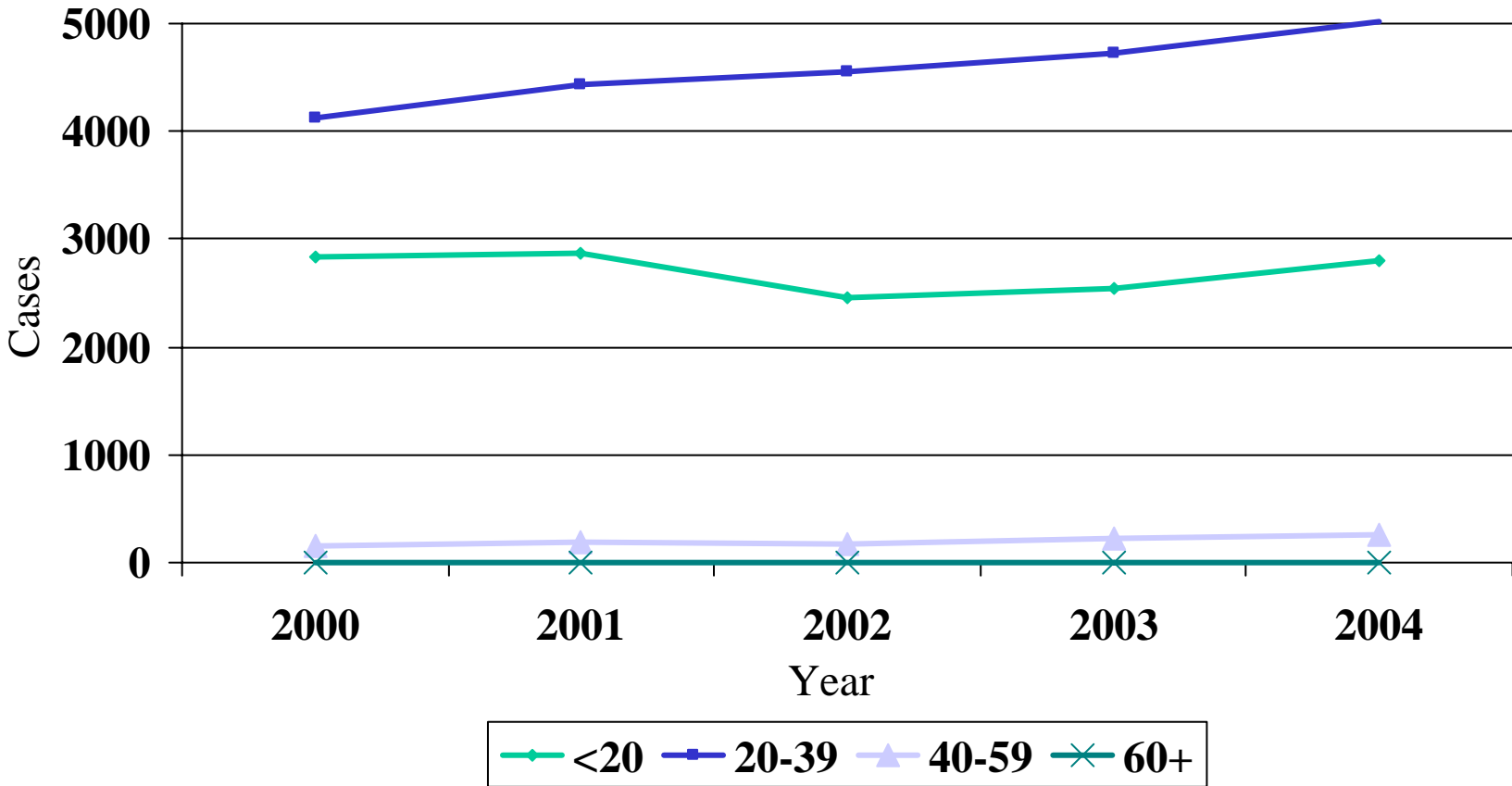
\*per 100,000 population

# Chlamydia Cases by Gender

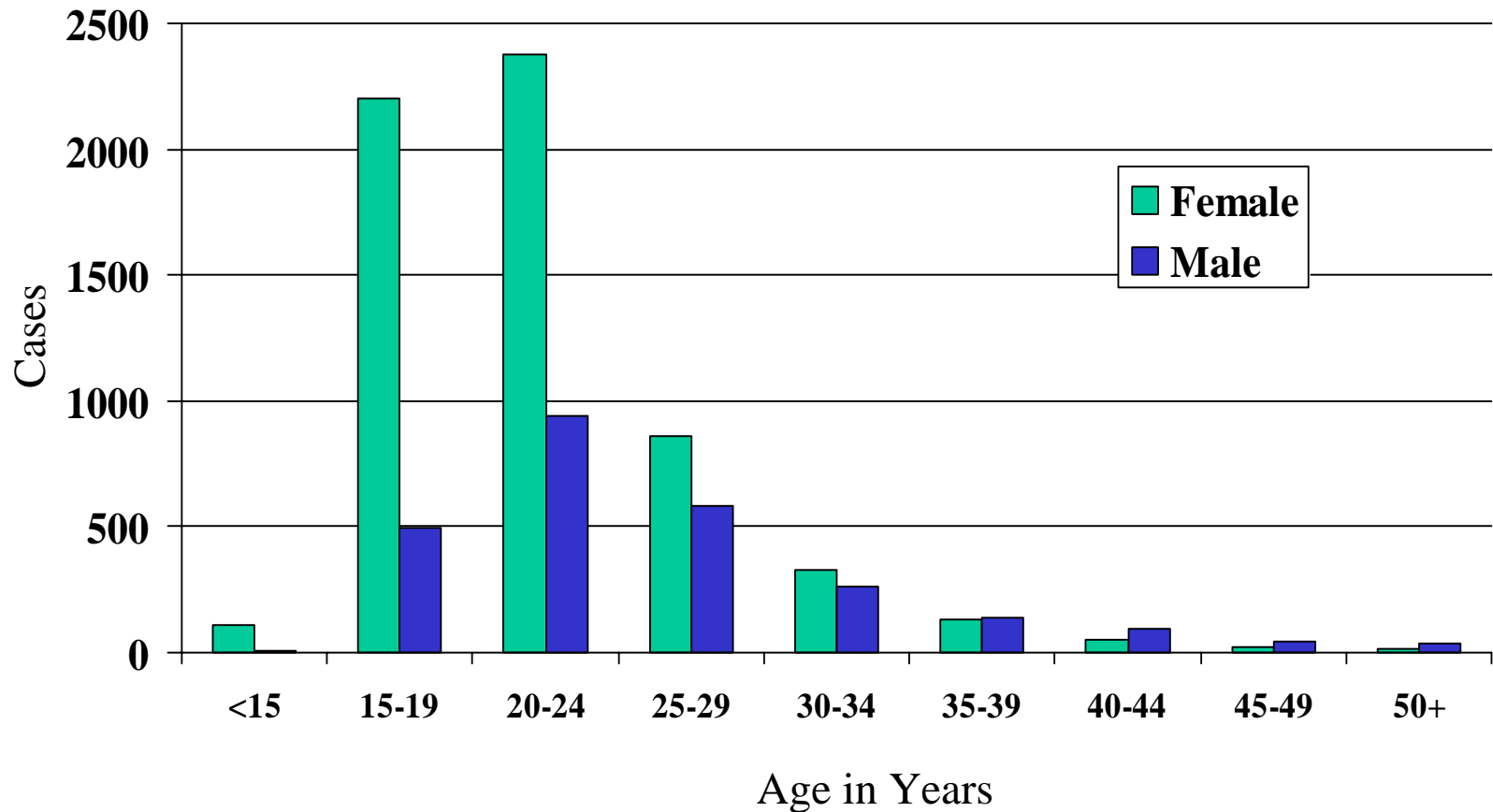
## Oregon, 2000-2004



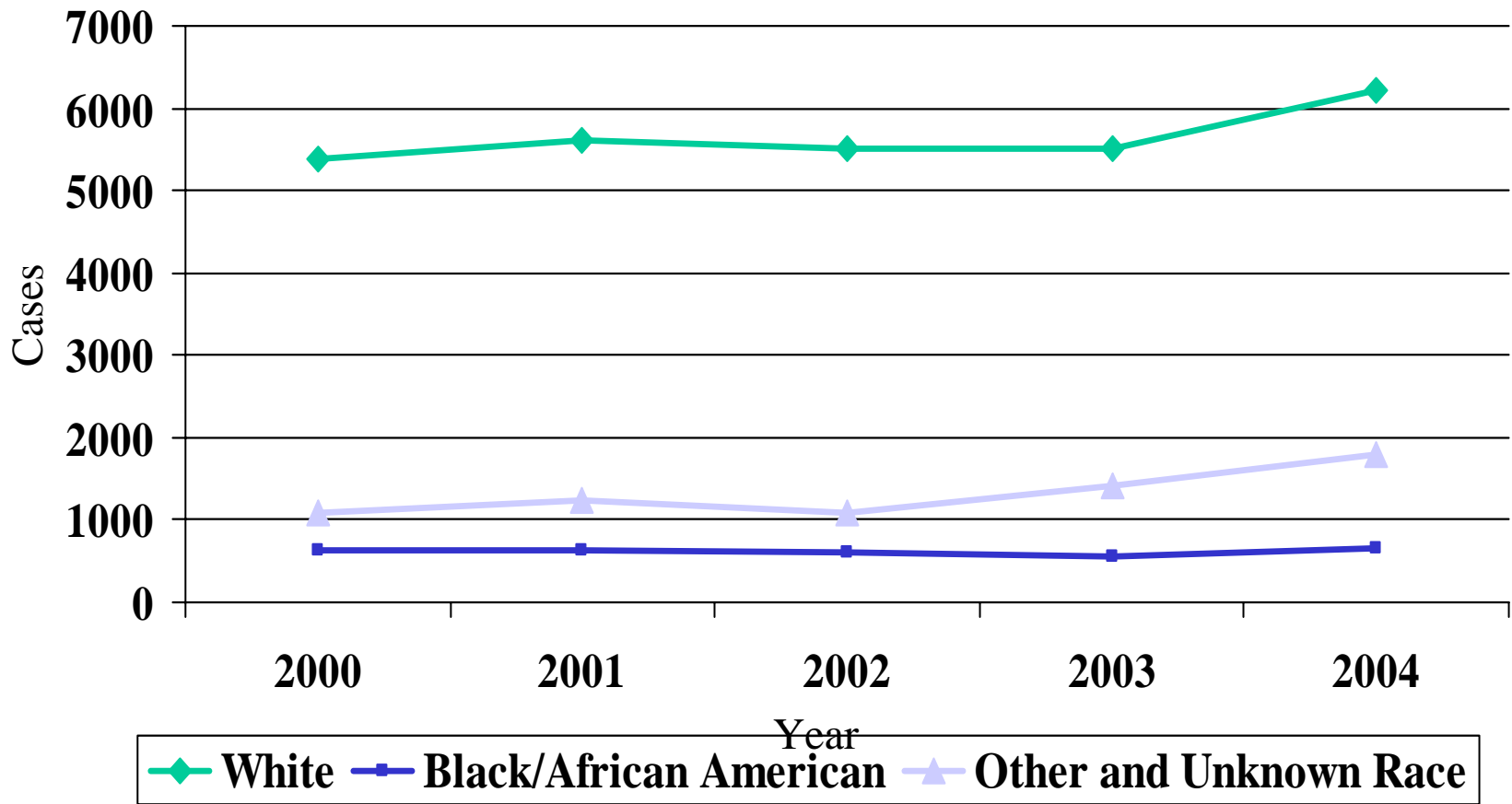
# Chlamydia Cases by Age Group Oregon, 2000-2004



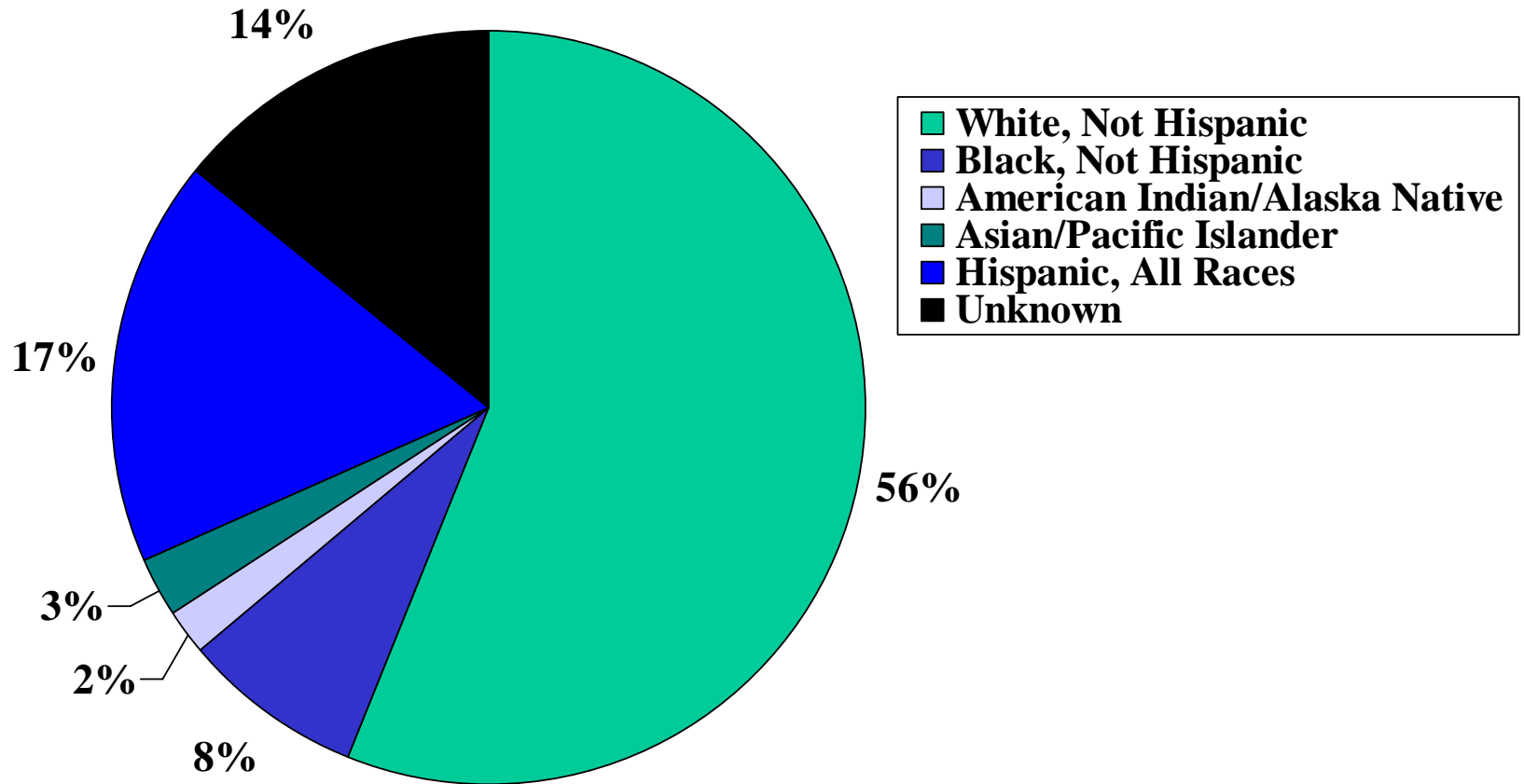
# Chlamydia Cases by Gender and Age Oregon, 2004



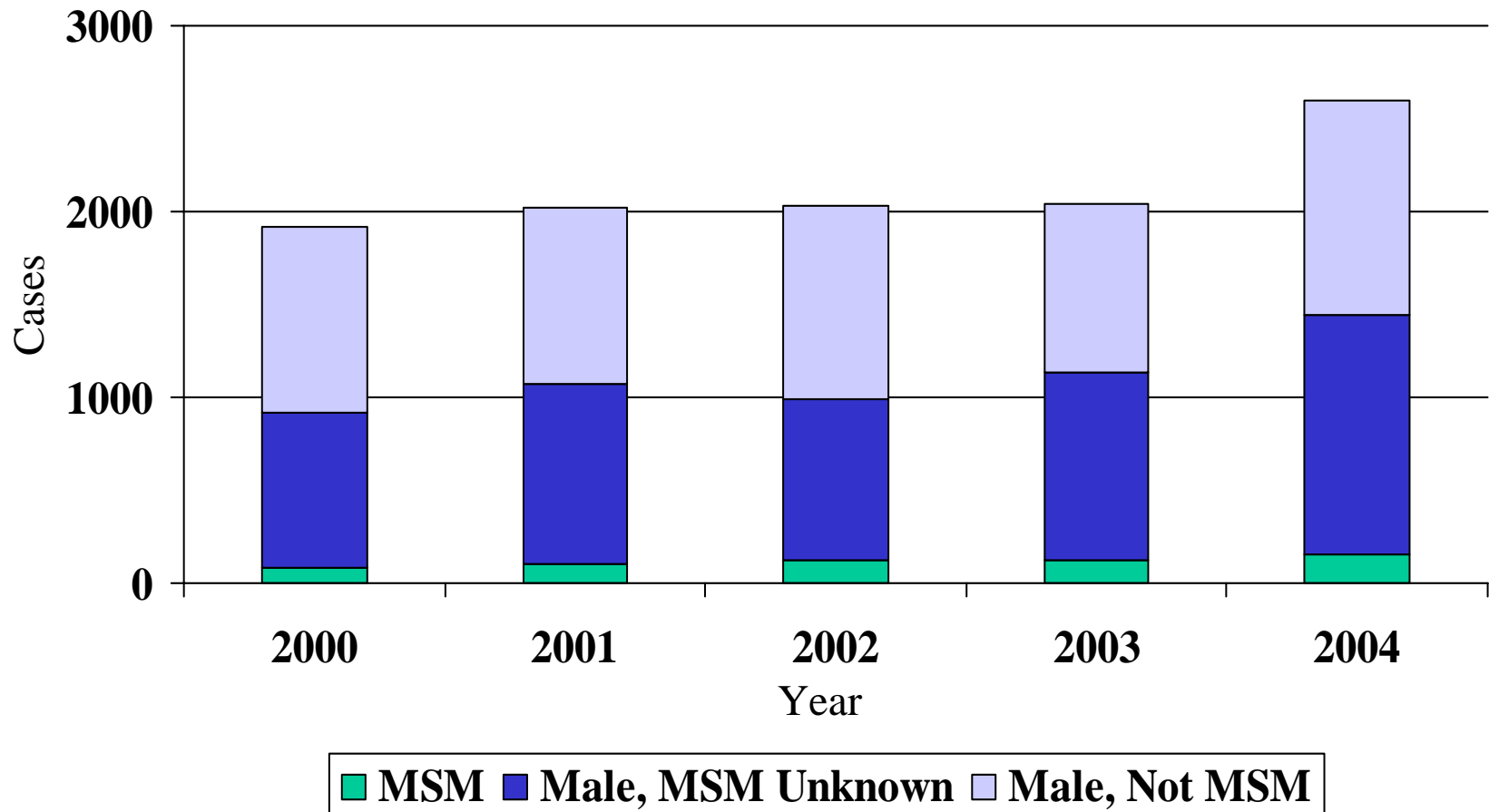
# Chlamydia Cases by Race Oregon 2000-2004



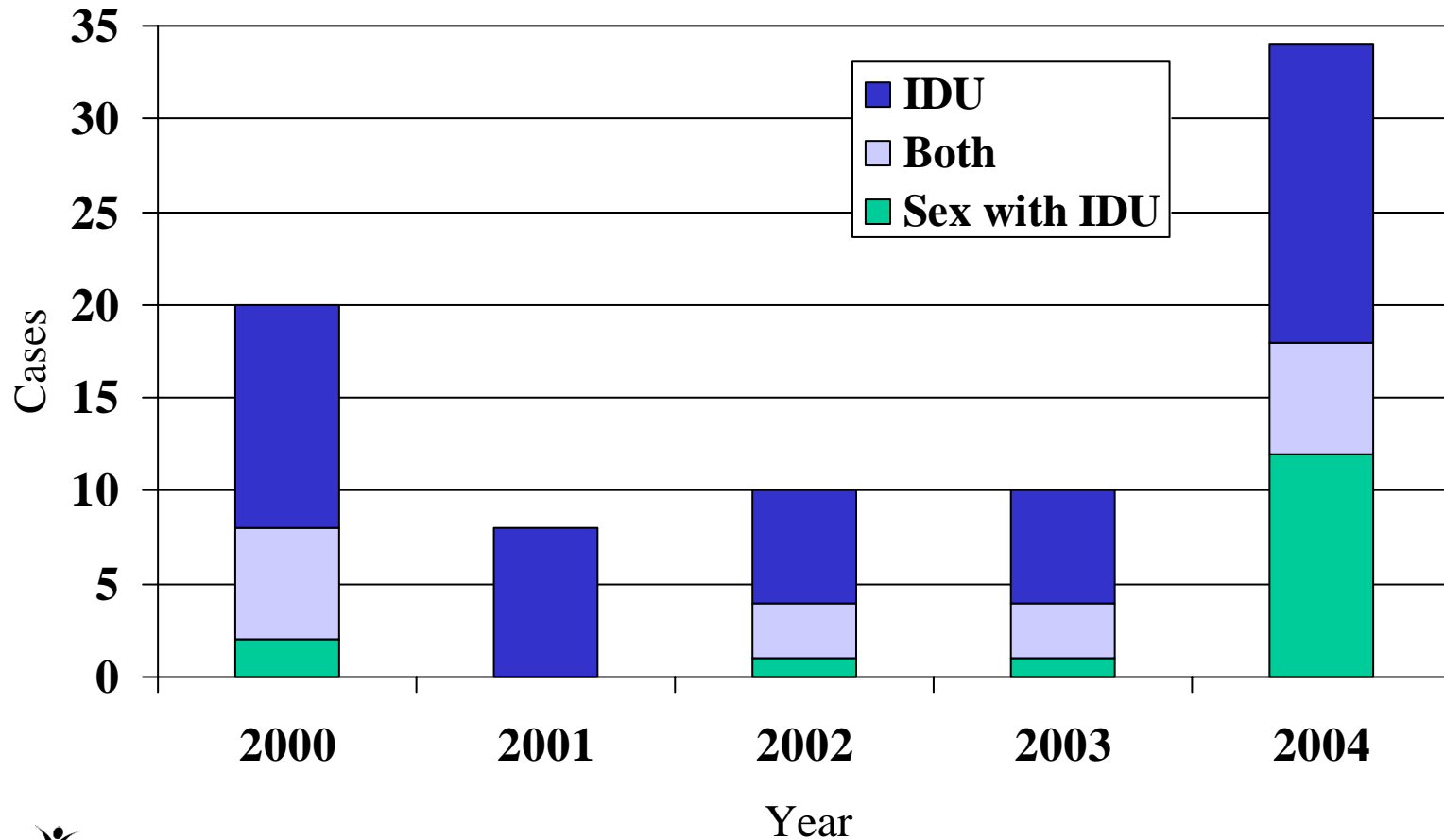
# Chlamydia Cases by Race & Ethnicity Oregon, 2004



# Chlamydia Cases among Men by MSM Status Oregon 2000-2004



# Chlamydia Cases and Injection Drug Use Oregon 2000-2004



# Chlamydia Cases Co-Morbidity with Early Syphilis, and Gonorrhea Oregon, 2000-2004

