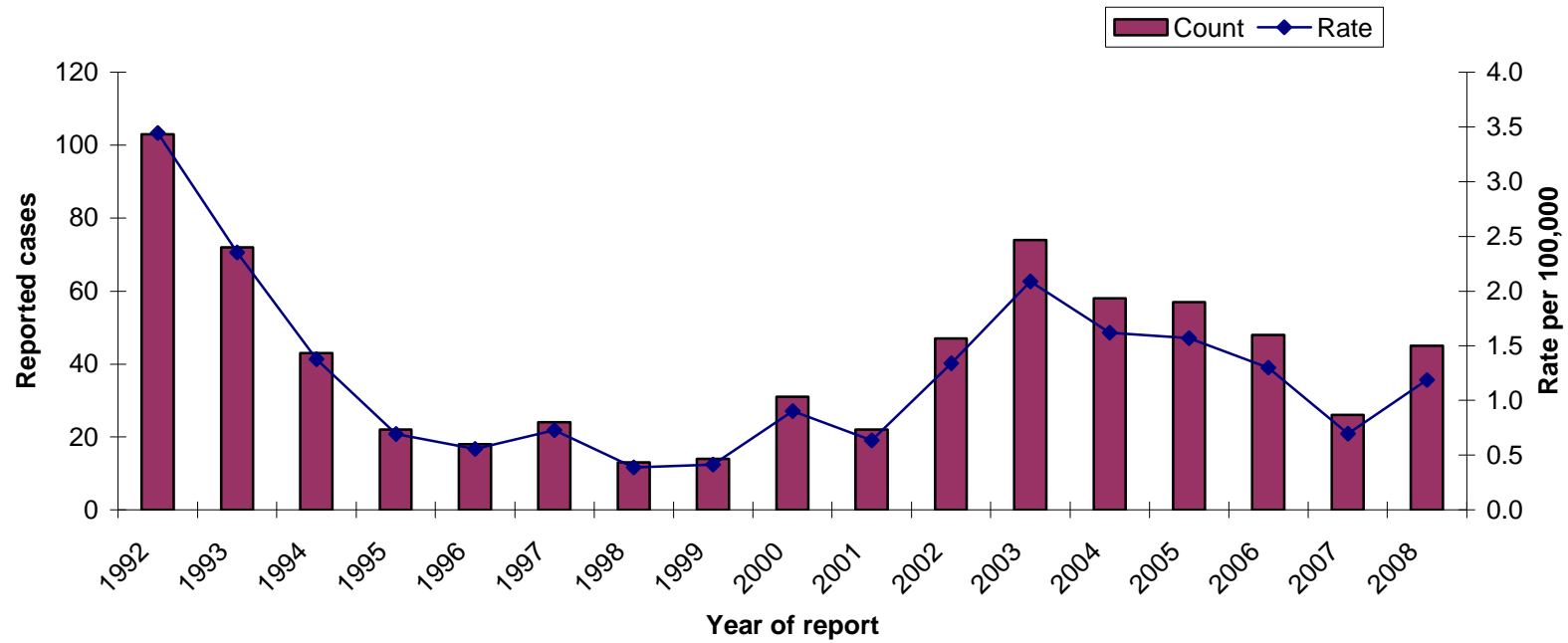
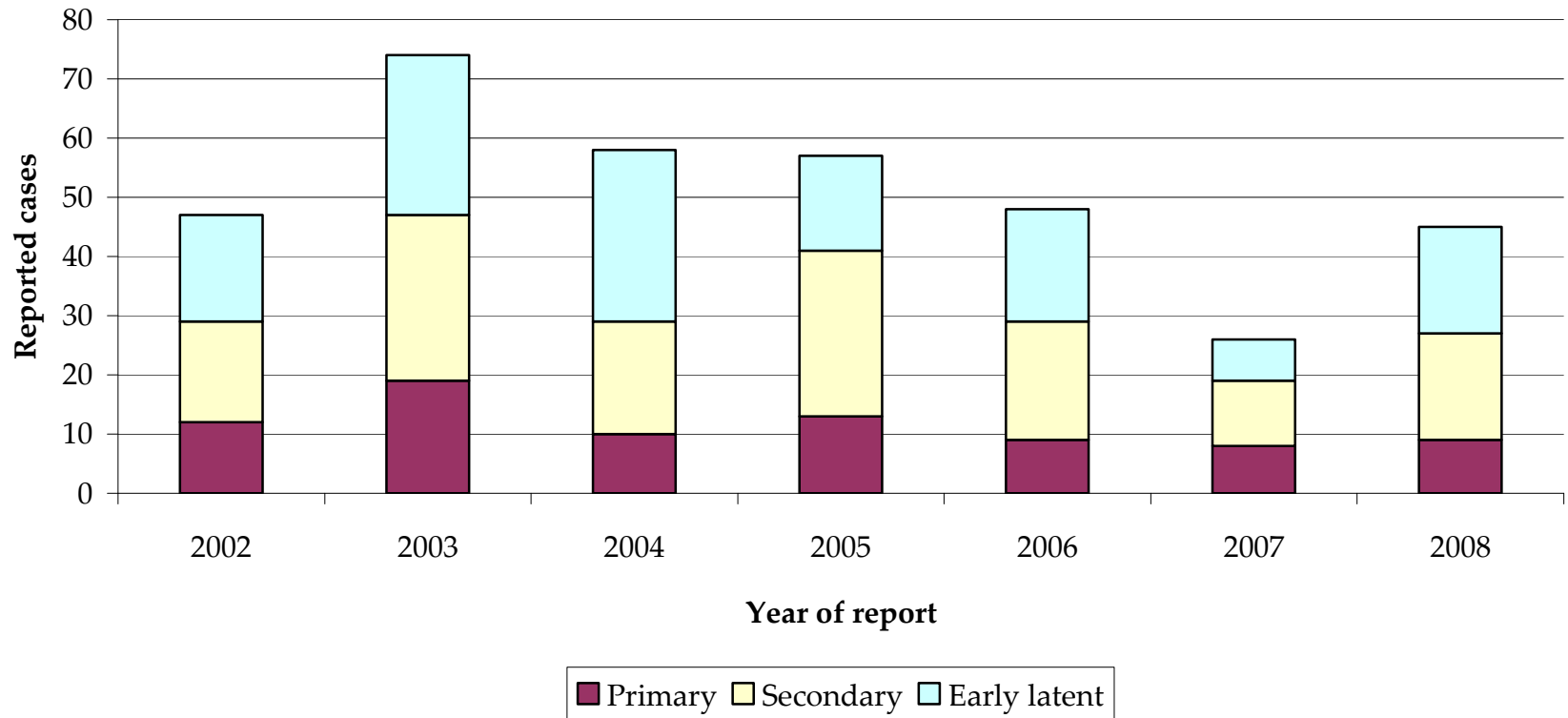


Oregon
Sexually Transmitted Disease Program
Syphilis Case Data
2008

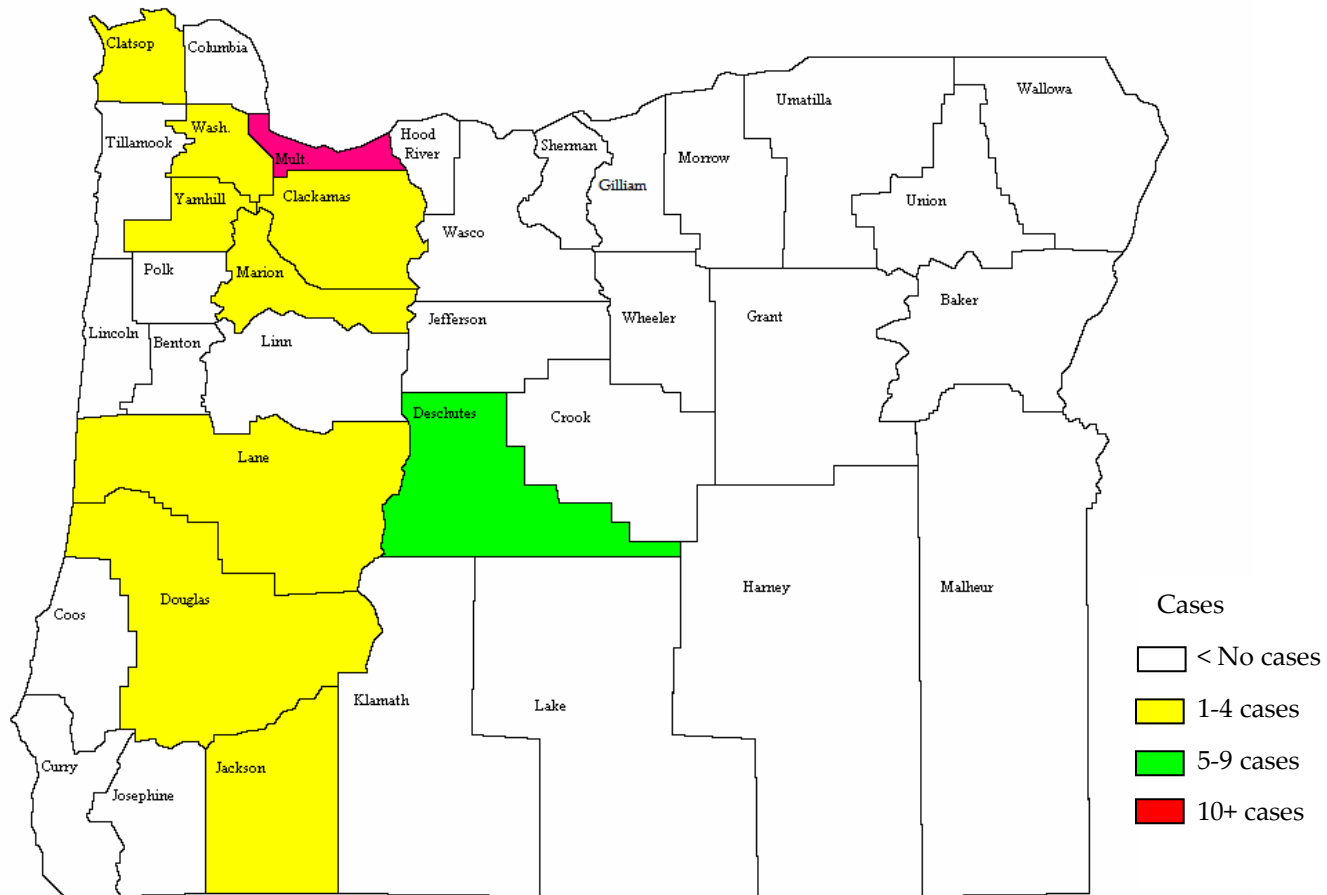
Early syphilis cases and incidence in Oregon, 1992–2008



Early syphilis cases by stage at diagnosis in Oregon, 2002–2008



Early syphilis cases by county of residence, 2008



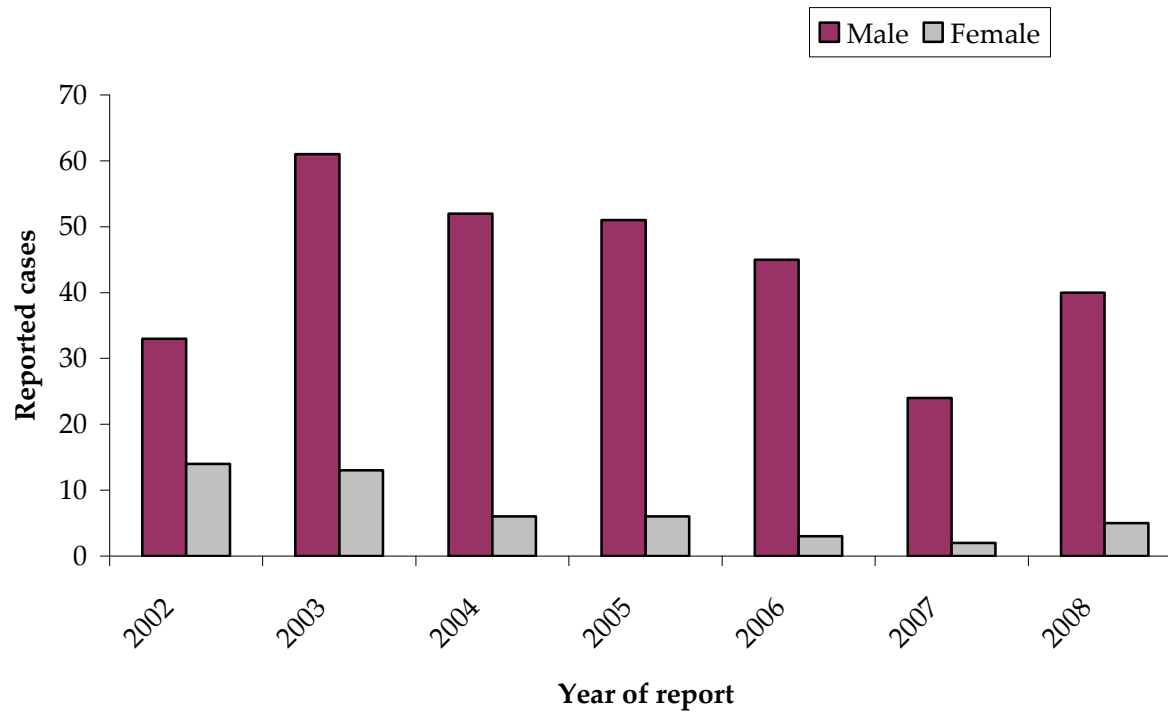
Early syphilis in most affected counties, 2008*

County	Count	Percent of State	Rate/100,000**
CLACKAMAS	3	7%	0.8
DESCHUTES	5	11%	3.0
JACKSON	4	9%	1.9
MULTNOMAH	22	49%	3.1
WASHINGTON	4	9%	0.8
TOTAL	38	84%	NA
OREGON TOTAL	45		1.2

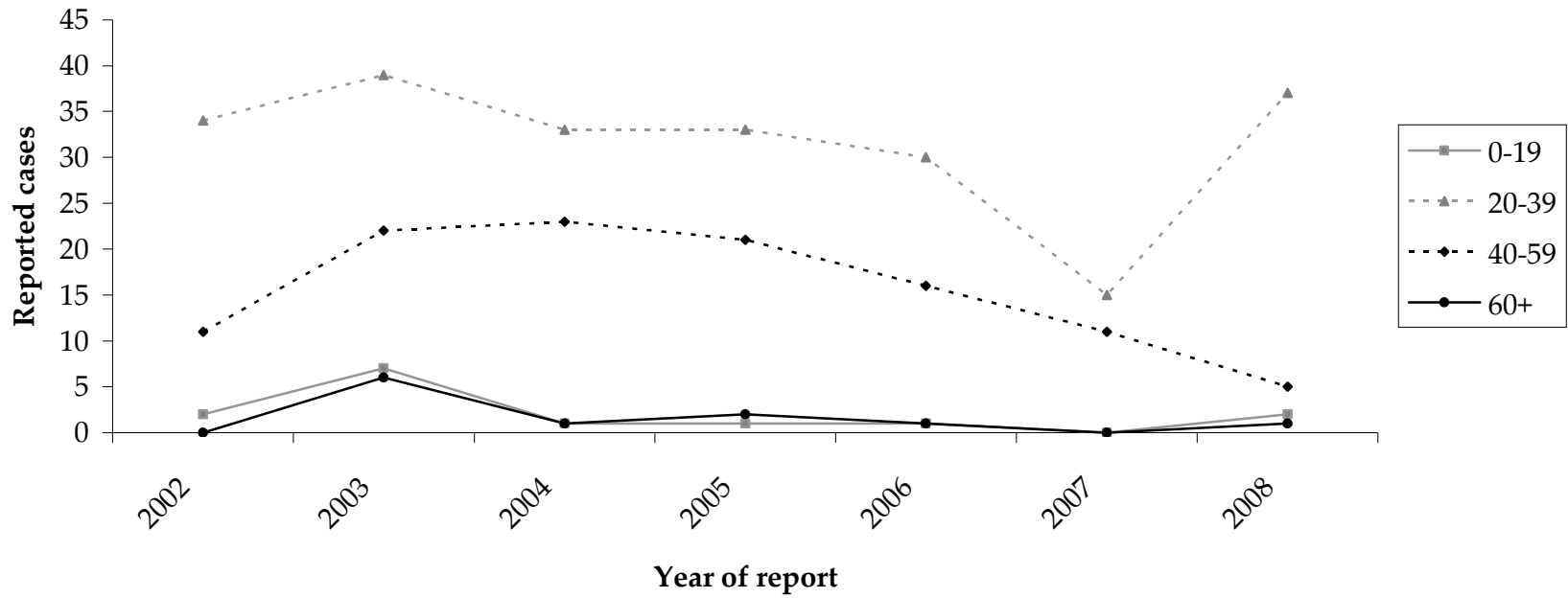
* Primary, secondary or early latent syphilis

** Portland State Univ., Population Research Center, July 1, 2008

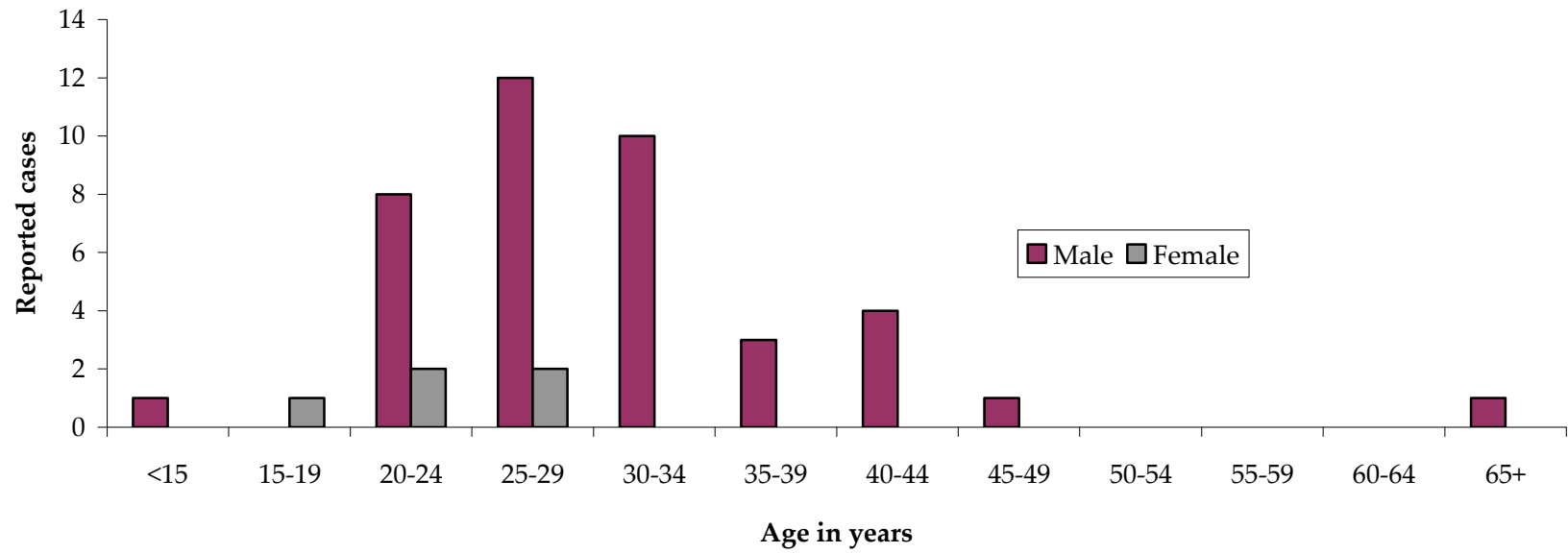
Early syphilis cases by sex, 2002–2008



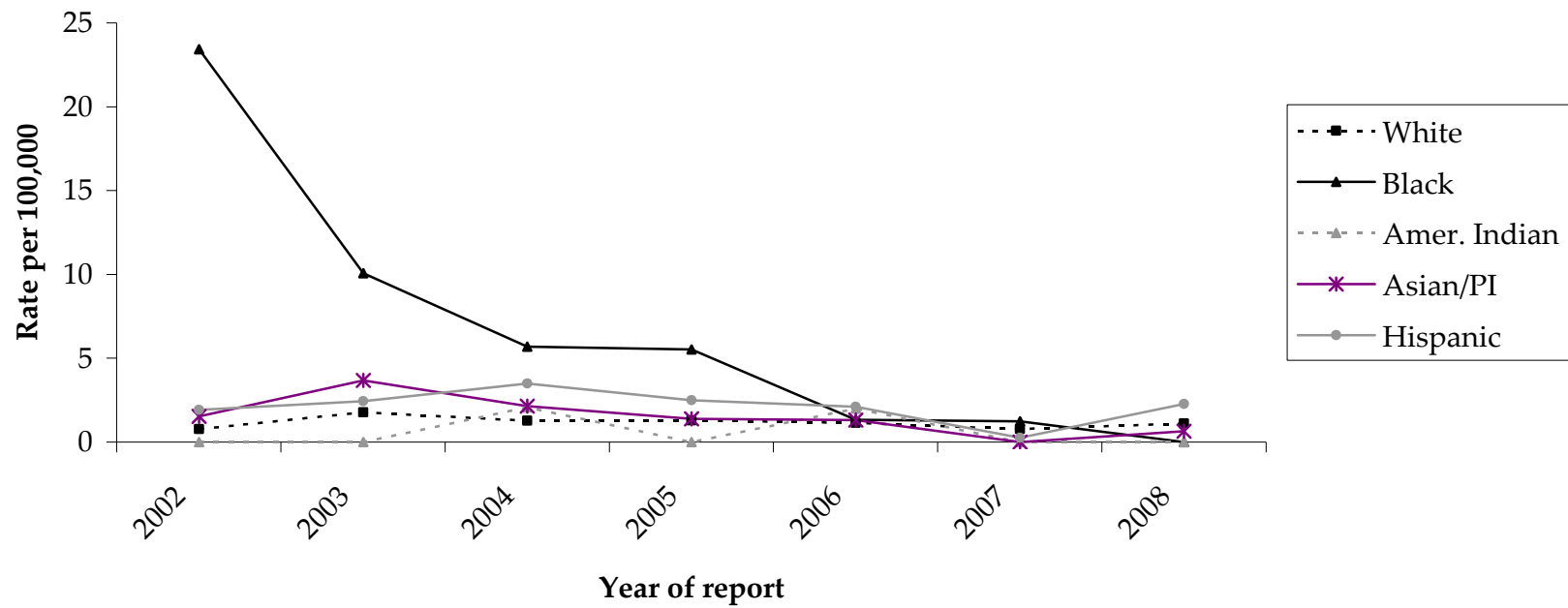
Early syphilis cases by age group, 2002–2008



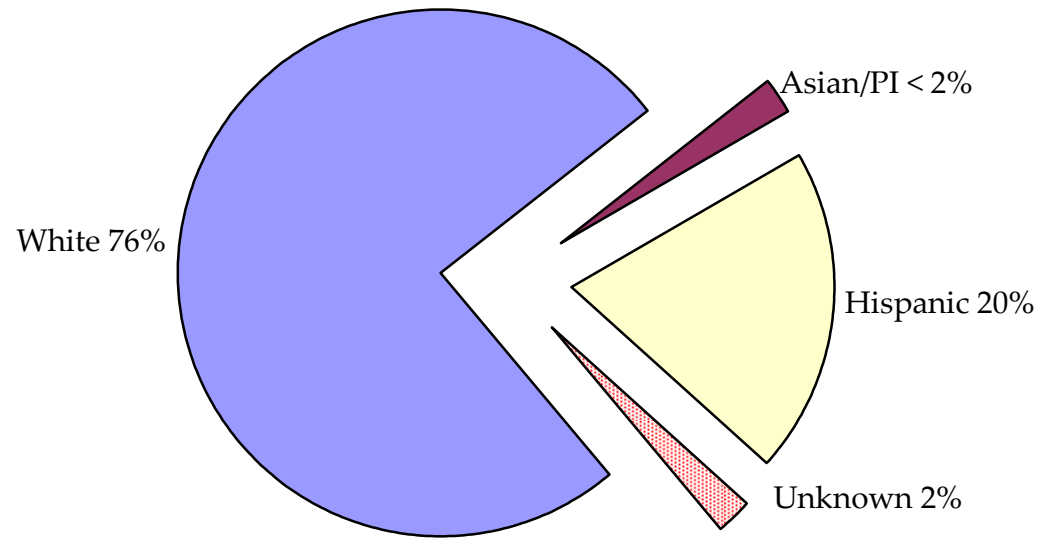
Early syphilis cases by sex and age, 2008



Early syphilis rate by race/ethnicity per 100,000, 2002–2008



Early syphilis by race/ethnicity, 2008



Early syphilis cases among males by MSM status, 2002–2008

