

THIS MAP WAS PREPARED FOR
ASSESSMENT PURPOSE ONLY

0 200 400 800 Feet

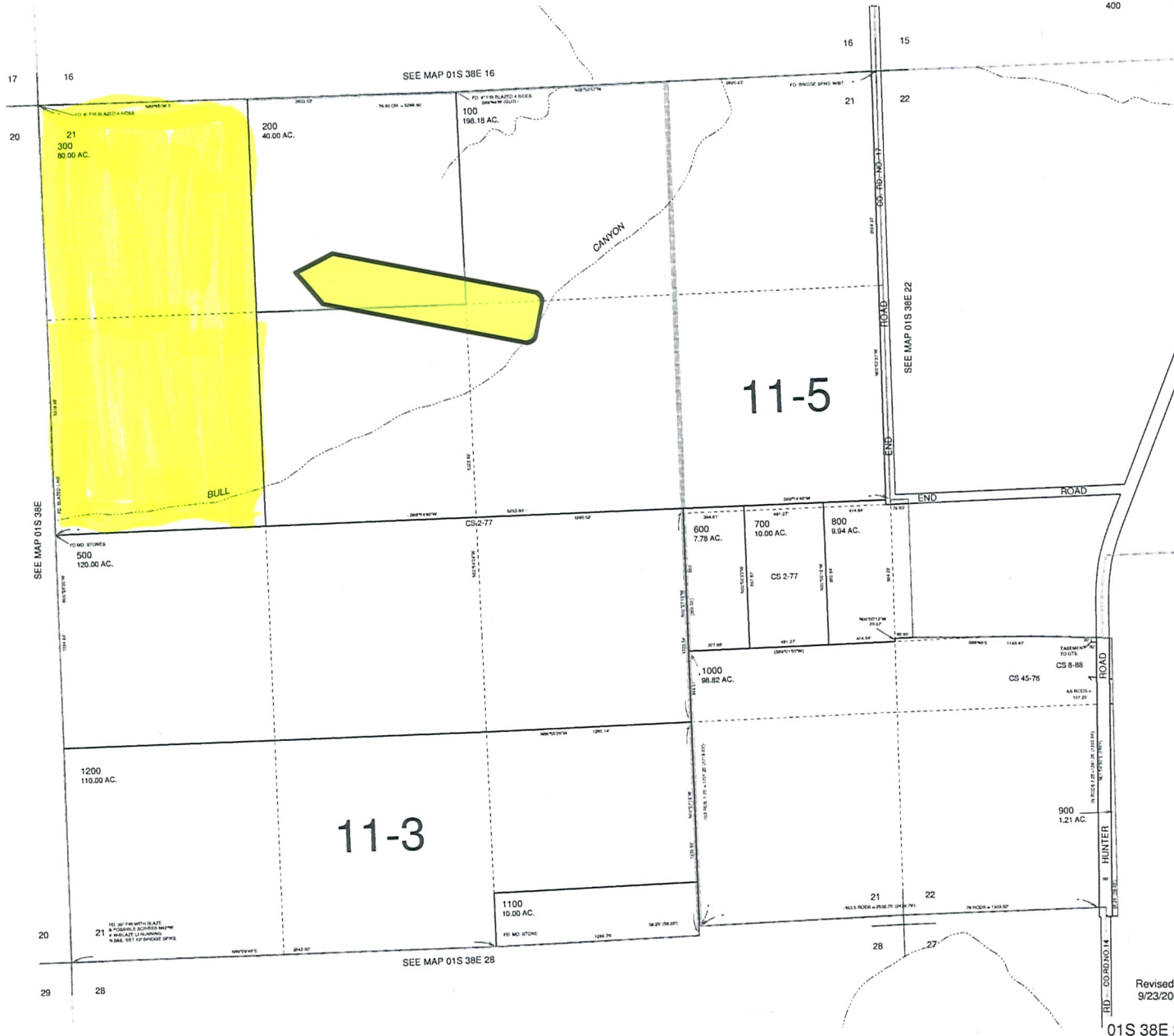
SECTION 21 T.01S. R.38E. W.M.

UNION COUNTY

1" = 400'

01S 38E 21

CANCELLED NO.
400



Revised 9C
9/23/2004

01S 38E 21