

Eelgrass beds of South Slough NERR, Charleston, Oregon
Photos by Tom Gaskill



Fig. 1 Eelgrass (*Zostera marina*) at low tide



Fig. 2 Eelgrass blades indicating the direction of tidal flow



Fig. 3 Juvenile crabs use eelgrass blades for cover and forage



Fig. 4 Dense eelgrass blades provide ideal habitat.

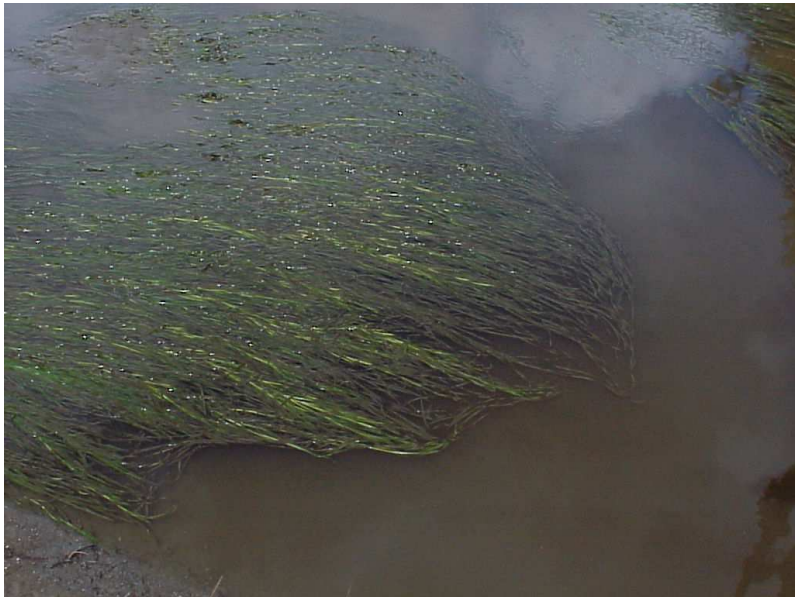


Fig. 5 As the tide rises, eelgrass beds provide vertical structure.



Fig. 6 Rooted in the sediment, the basal sheath contains many blades.



Fig. 7 Seeds are contained within specialized channels on certain blades.



Fig. 8 Eelgrass seeds are one form of reproduction.