

UNEMPLOYMENT INSURANCE STATISTICS

State of Oregon
EMPLOYMENT DEPARTMENT

UI Programs

Janet Orton

(503) 947-1679

janet.l.orton@state.or.us

www.WorkingInOregon.org

LABOR FORCE DATA	This Month	Last Month	Last Year
	Oct 2009	Sep 2009	Oct 2008
Oregon Civilian Labor Force	1,959,561	1,958,482	1,976,552
Total Number Unemployed	210,325	207,856	135,071

UNEMPLOYMENT RATES (CIVILIAN) (%)		Labor Force & Rate Data: www.QualityInfo.org		
Total Unemployment:	Oregon	10.7	10.6	6.8
	National	9.5	9.6	6.0
Seasonally Adjusted:	Oregon	11.3	11.3	7.2
	National	10.2	9.8	6.5

Week # :	46
Ending:	November 21, 2009

UNEMPLOYMENT RATES (%)	THIS WEEK		LAST WEEK		This Month	Last Month	Last Year
	2009	2008	2009	2008	Oct 2009	Sep 2009	Oct 2008
Insured Unemployment: Oregon	5.90	3.89	5.54	3.72	5.39	5.42	3.04
EB Trigger	5.54	3.39	5.55	3.31			
Adjusted Insured Unemployment	7.99	4.25	8.00	4.19			
National Average TUR ¹	11.60	6.30	11.80	6.30			

REGULAR CLAIMS (UI, UCFE, UCX)					Oct 2009	Sep 2009	Oct 2008
Initial Claims (Excl. Liable)²	11,509	12,599	11,854	13,423	54,514	37,289	44,245
Oregon - New	4,470	6,056	5,112	6,820	21,071	14,642	23,628
Additional	6,572	6,073	6,161	6,240	30,771	20,657	18,862
Interstate - Agent	467	470	581	363	2,672	1,990	1,755
Interstate - Liable	293	270	319	270	1,564	1,077	1,164
Weeks Claimed (Excl. Liable)²	98,154	72,740	92,052	66,673	444,245	370,468	245,520
Oregon	93,613	70,029	87,627	64,104	421,207	352,817	234,056
Interstate - Agent	4,541	2,711	4,425	2,569	23,038	17,651	11,464
Interstate - Liable	3,404	2,179	3,292	2,137	15,435	12,512	8,049
New Combined Wage Claims	243	188	173	226	791	624	856
Non-monetary Determinations & Redeter.	2,985	2,485	3,230	2,874	13,018	10,955	12,324

PAYMENTS: REGULAR BENEFITS					Oct 2009	Sep 2009	Oct 2008
First Payments	5,866	4,400	4,314	4,466	18,040	13,348	16,064
Checks Issued	88,884	65,264	86,096	60,998	415,643	350,585	221,529
Gross Amount of Payments (\$) ^{2,4}	27,198,223	18,520,657	26,421,233	17,273,498	129,359,221	109,622,874	62,949,664
Regular Benefit Payments (\$)	25,107,848	18,520,657	24,398,533	17,273,498	119,612,446	101,395,574	62,949,664
Regular Federal Additional Compensation (\$) ³	2,090,375	0	2,022,700	0	9,746,775	8,227,300	0
Average Check Amount (\$) ^{2,4}	306.00	283.78	306.88	283.18	311.23	312.69	284.16
Number Exhausting Benefits	2,652	1,289	2,804	1,286	14,756	12,045	4,874

TRUST FUND					Oct 2009	Sep 2009	Oct 2008
Balance (in Millions) (\$)	\$ 1,195.76	\$ 2,116.00	\$ 1,217.90	\$ 2,076.71	\$ 1,190.98	\$ 1,268.70	\$ 2,067.71

¹ NTUR: Unemployment Compensation Amendment of 1992 specifies that a 2 month average NTUR be used to determine duration levels.

² Excludes WORKSHARE program

³ Federal Additional Compensation program start 3/2/2009 - Adds and additional \$25 to all claims

⁴ Includes FAC Payments

For current and historic UI reports, visit:

<http://www.oregon.gov/EMPLOY/BUDGET/UI/index.shtml>

Week # :	46
Ending:	November 21, 2009

	This Week	Last Week	Cumulative
EXTENDED BENEFITS (EB)	YTD		
Initial Claims (Excl. Liable)	88	834	25,492
Weeks Claimed (Excl. Liable)	519	11,149	273,160
Gross Amount of Payments (\$) ⁴	313,767	3,749,860	94,625,033
EB Benefit Payments (\$)	290,042	3,465,810	87,352,408
EB Federal Additional Compensation (\$) ³	23,725	284,050	7,272,625
Number Exhausting Benefits	41	451	8,613

Oregon HEB Trigger "ON" 02/15/2009.

For a list of states ON EB, visit:

http://www.workforcsecurity.doleta.gov/unemploy/claims_arch.asp

Misc Additional Benefits (AB)			
Initial Claims (Excl. Liable)	4	3	116
Weeks Claimed (Excl. Liable)	39	43	1,914
Gross Amount of Payments (\$)	0	0	0
Number Exhausting Benefits	0	0	0

TRADE ADJUSTMENT ACT (TRA)			
Training Plans	3	3	1,917
Initial Claims	149	106	4,531
Weeks Claimed	5	3	1,636
Gross Amount of TRA Payments (\$) ⁴	727	856	620,562
TRA Benefit Payments (\$)	702	781	585,537
TRA Federal Additional Compensation (\$) ³	25	75	35,025
Certifications	2,575	3	50
Gross Amount of TAA Payments (\$)		791	81,989

WORKSHARE PROGRAM (WS)			
Initial Claims	473	597	17,718
Weeks Claimed	6,487	5,020	215,913
Gross Amount of Payments (\$) ⁴	555,695	613,782	24,388,793
WS Benefit Payments (\$)	450,370	499,632	20,237,019
WS Federal Additional Compensation (\$)	105,325	114,150	4,151,774

TRAINING UI (TUI)			
Applications Accepted	272	347	8,118
Approved	248	308	7,241
Weeks Claimed	4,615	3,954	97,454
Gross Amount of Payments (\$) ⁴	1,599,678	1,447,713	34,735,196
TUI Benefit Payments (\$)	1,486,828	1,347,713	32,529,931
TUI Federal Additional Compensation (\$)	112,850	100,000	2,205,265

SUPPLEMENTAL UI for DISLOCATED WORKERS (SUD)			
Initial Claims	0	10	153
Weeks Claimed	13	115	762
Gross Amount of Payments (\$)	2,135	37,212	267,355

³ Federal Additional Compensation program start 3/2/2009 - Adds and additional \$25 to all claims

⁴ Includes FAC Payments

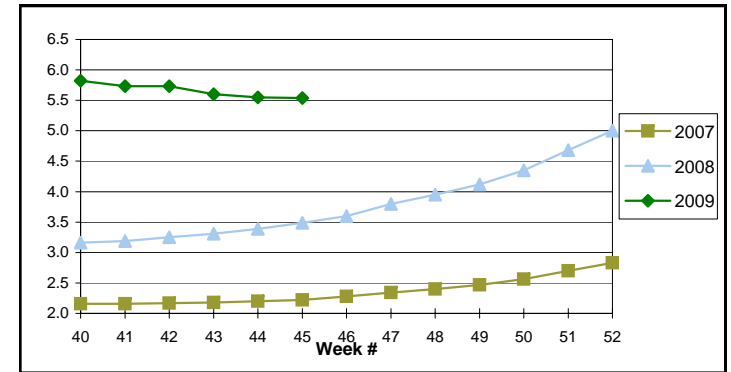
For current and historic UI reports, visit:

<http://www.oregon.gov/EMPLOY/BUDGET/UI/index.sht>

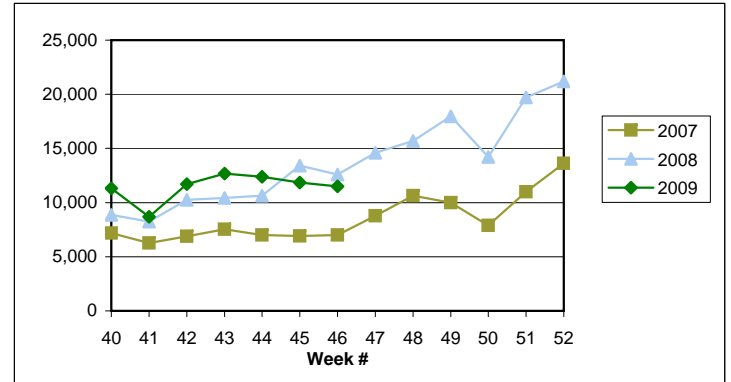
(503) 947-1679

janet.l.orton@state.or.us

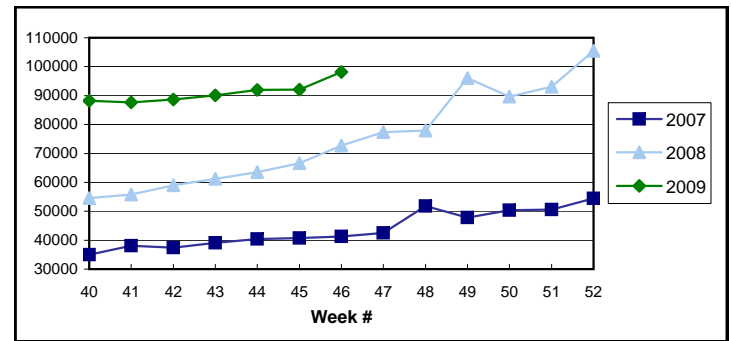
EB Trigger: 5.54



Regular Initial Claims: 11,509



Regular Weeks Claimed: 98,154



Week # : 46
Ending: November 21, 2009

This Week **Last Week** **Cumulative**
 YTD

SELF EMPLOYMENT (SEA) MONTHLY ⁶		Oct '09	Cumulative
Referred		50	517
Enrolled		123	849
Completed		65	290
Weeks Claimed	233	1,147	9,036
Gross Amount of Payments (\$)⁴	94,773	408,524	3,808,280
SEA Benefit Payments (\$)	89,523	380,249	3,611,924
SEA Federal Additional Compensation (\$)³	5,250	28,275	196,356

⁶ These are MONTHLY counts; data in **BOLD** is weekly.

OREGON EXTENDED BENEFITS (OEB)			
Initial Claims (Excl. Liable)	235	697	9,407
Weeks Claimed (Excl. Liable)	1,206	8,024	37,745
Gross Amount of Payments (\$)	176,790	2,150,282	9,919,585
Number Exhausting Benefits	312	247	1,115

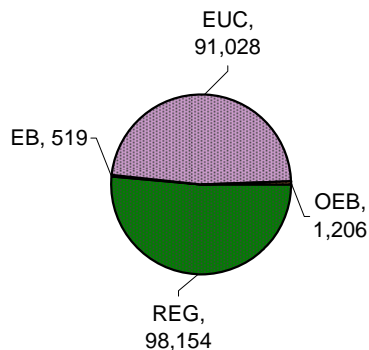
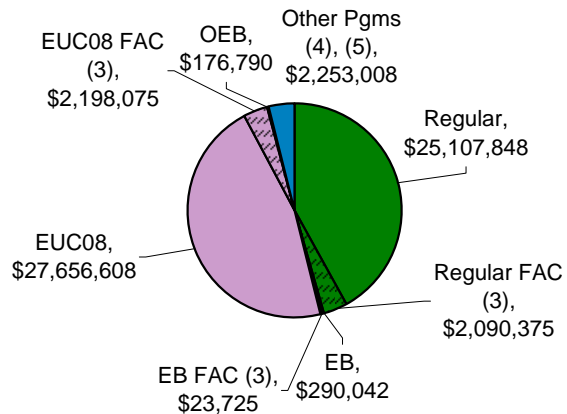
OEB Begins 10/04/2009

EMERGENCY UNEMPLOYMENT COMPENSATION 08 (EUC08)			
Initial Claims (Excl. Liable)	4,260	3,386	135,224
Weeks Claimed (Excl. Liable)	91,028	67,690	2,174,801
Gross Amount of Payments (\$) ⁴	29,854,683	22,900,798	710,890,129
EUC Benefit Payments (\$)	27,656,608	21,238,248	665,182,461
EUC Federal Additional Compensation (\$) ³	2,198,075	1,662,550	45,707,668
Number Exhausting Tier 1 Benefits	1,192	1,895	58,607
Number Exhausting Tier 2 Benefits	1,017	981	31,434
Number Exhausting Tier 2.1 Benefits	21,830	0	25,692
Number Exhausting Tier 3 Benefits	0	0	0

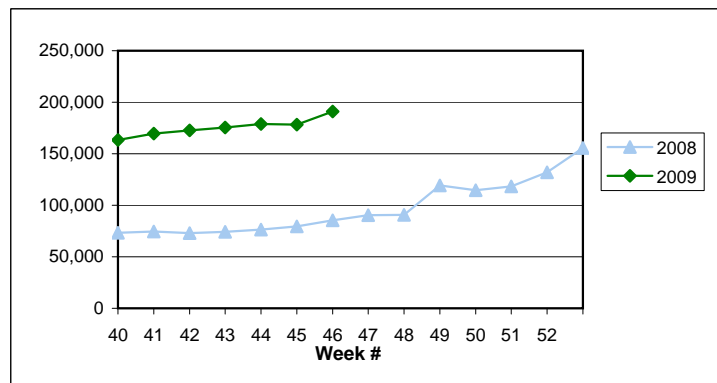
EUC begins 07/06/2008

Benefits Paid By Program
Total Benefits Paid: \$59,796,471

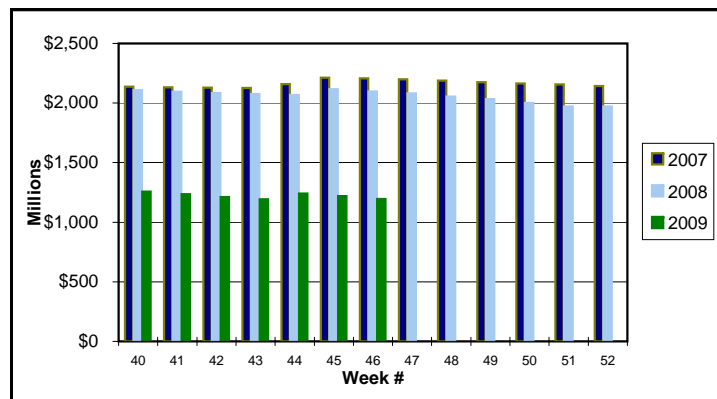
Weeks Claimed - Program by Program
Total: 190,907



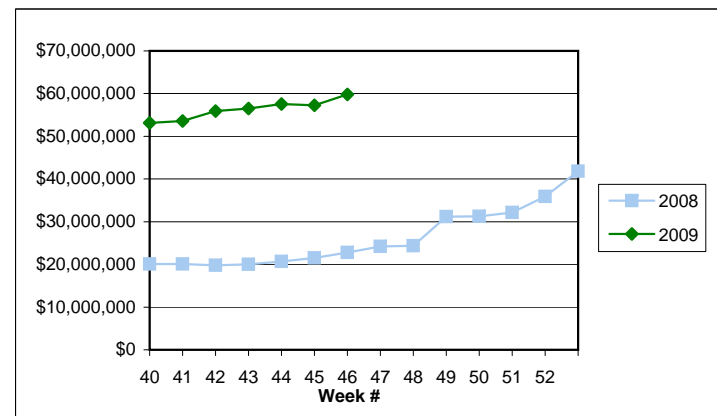
Total Weeks Claimed (Regular + EB + EUC + OEB): 190,907



Trust Fund Balance: \$1,195.76 (in millions)



Total Benefits Paid: \$59,796,471 (4)



³ Federal Additional Compensation program start 3/2/2009 - Adds and additional \$25 to all claims

⁴ Includes FAC Payments

⁵ Other Programs Include AB, TRA, TAA, WS, TUI, SUD, SEA

For current and historic UI reports, visit:

<http://www.oregon.gov/EMPLOY/BUDGET/UI/index.sht>

(503) 947-1679

janet.l.orton@state.or.us