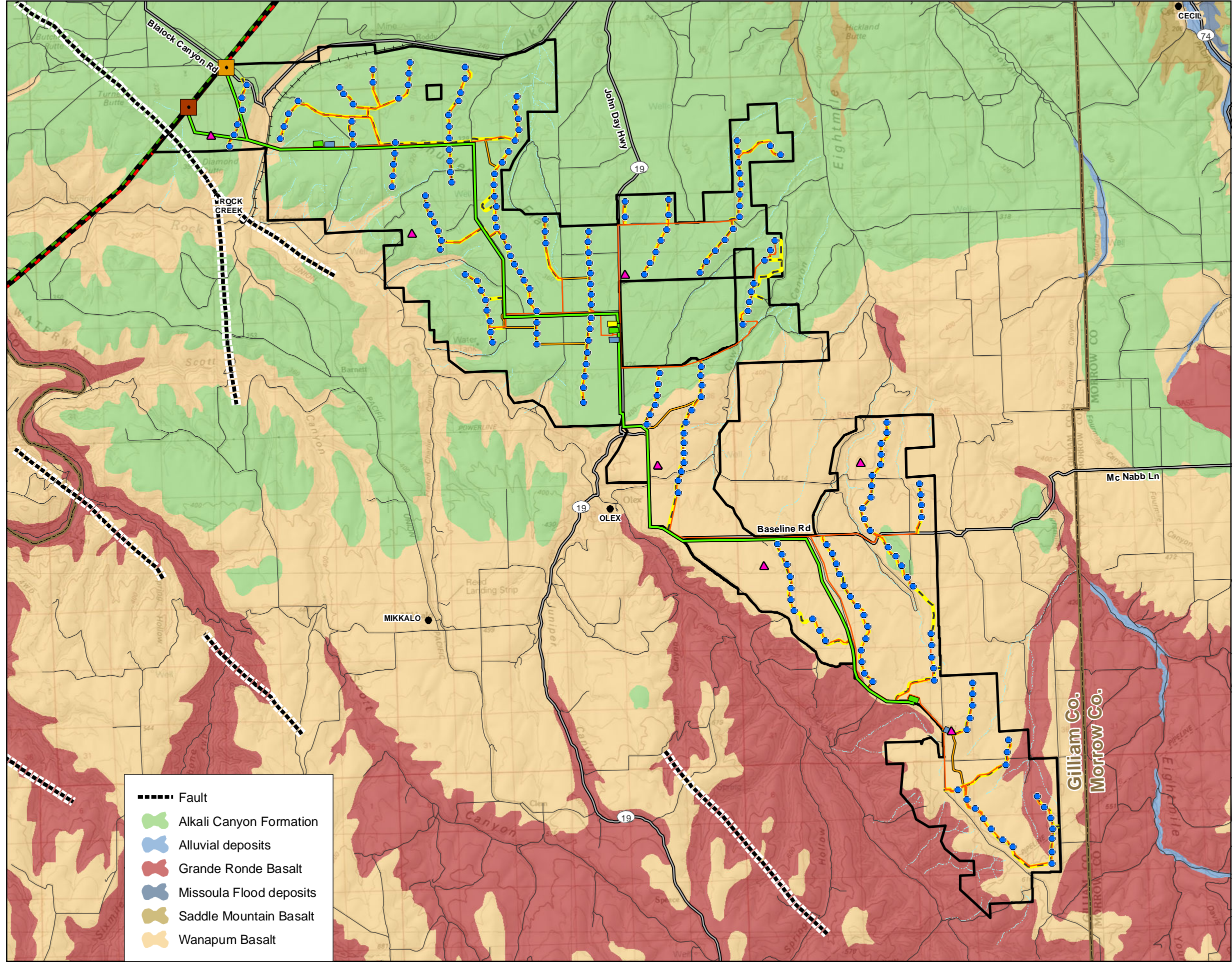


FIGURE H1
Geology Map
 (GE 82.5 1.6 MW
 Maximum Layout)

Baseline Wind Energy Facility



LEGEND

- Site Boundary
- Proposed Permanent Facilities**
- Proposed Turbine
- ▲ Proposed Met Towers
- Proposed Turbine Access Road
- Proposed 230-kV Generator Lead Line
- Proposed 34.5-kV Underground Collection Line
- Proposed O&M Building
- Proposed Substation
- Proposed Temporary Facilities**
- Proposed Crane Path
- Proposed Laydown Area
- Proposed Substations**
- Proposed PGE Cedar Spring Substation (approximate location)
- Proposed BPA Diamond Butte Substation (approximate location)
- Existing Features**
- 230kV Transmission Line
- 500kV Transmission Line
- Highway
- Major Road
- Roads
- Railroads
- Streams
- County Boundary

- Fault
- Alkali Canyon Formation
- Alluvial deposits
- Grande Ronde Basalt
- Missoula Flood deposits
- Saddle Mountain Basalt
- Wanapum Basalt



MAP NOTES:
 Projection: UTM Zone 10 North
 Datum: North American Datum of 1983
 Date: 12/19/2011



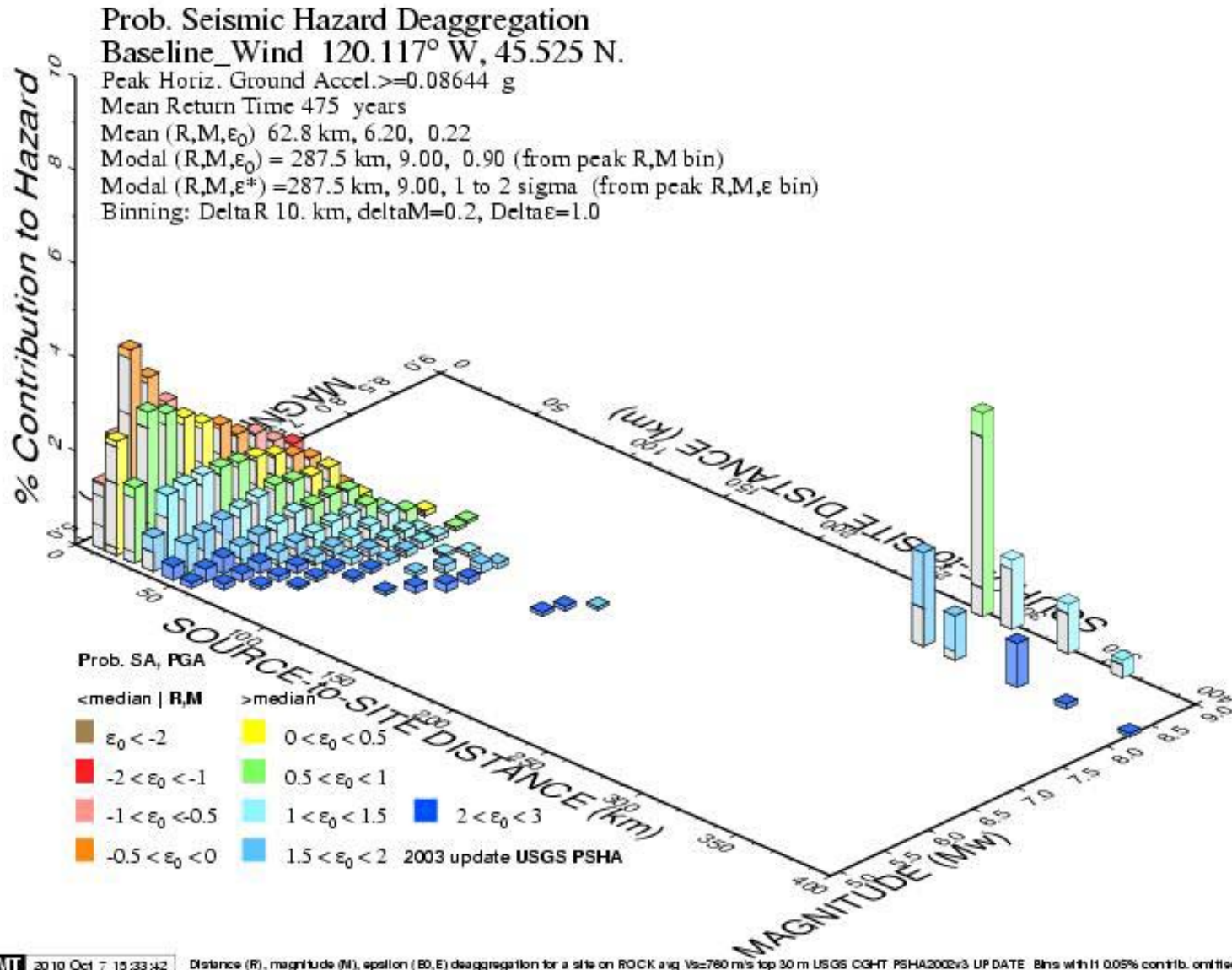


FIGURE H2
 Probabilistic Seismic Hazard Deaggregation - 475-Year Return Time
 Baseline Wind Energy Facility

Prob. Seismic Hazard Deaggregation

Baseline_Wind 120.117° W, 45.525 N.

Peak Horiz. Ground Accel. ≥ 0.1906 g

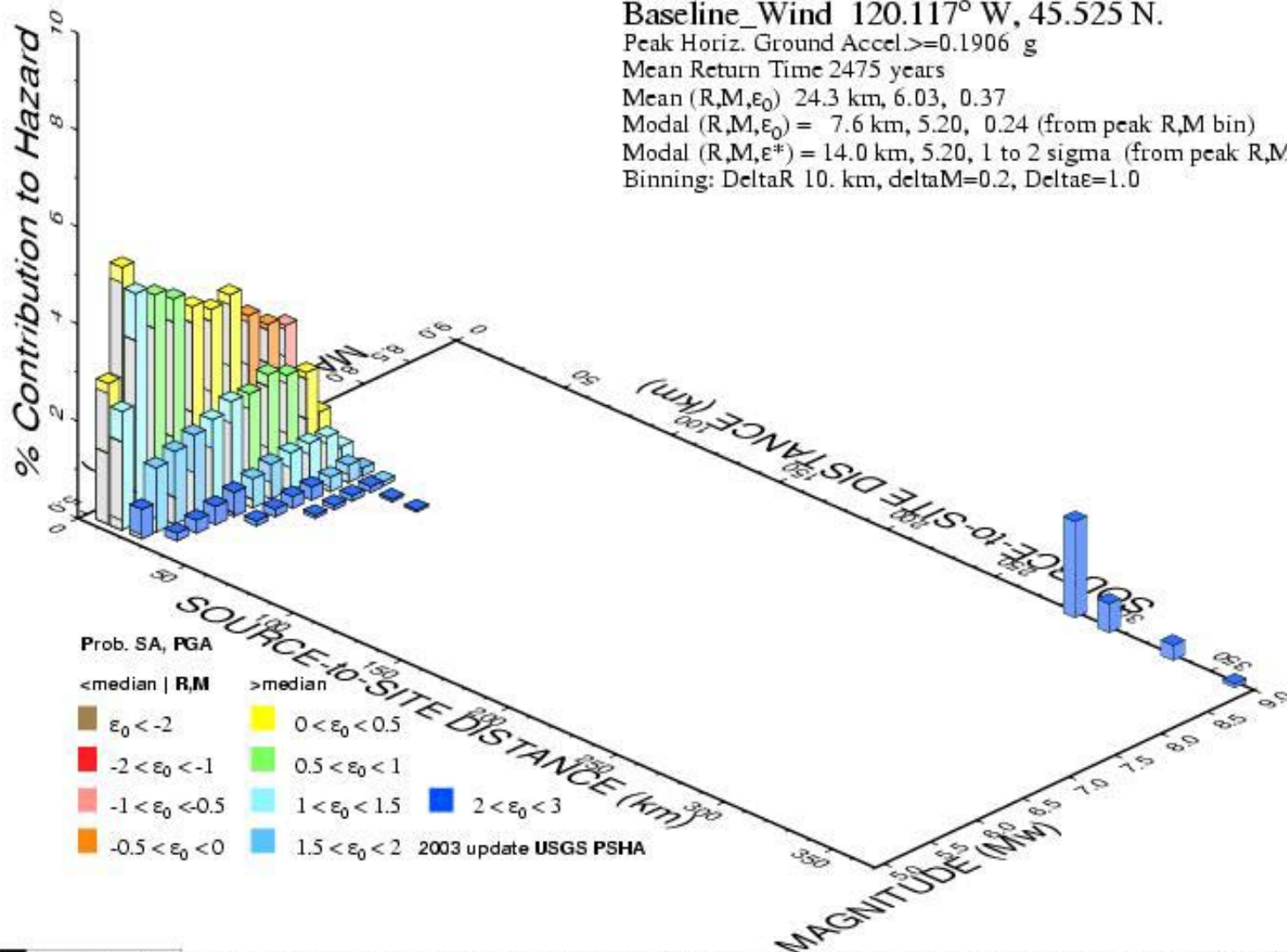
Mean Return Time 2475 years

Mean (R,M, ϵ_0) 24.3 km, 6.03, 0.37

Modal (R,M, ϵ_0) = 7.6 km, 5.20, 0.24 (from peak R,M bin)

Modal (R,M, ϵ^*) = 14.0 km, 5.20, 1 to 2 sigma (from peak R,M, ϵ bin)

Binning: DeltaR 10. km, deltaM=0.2, Delta ϵ =1.0



GMT 2010 Oct 7 15:32:17 Distance (R), magnitude (M), epsilon (E) deaggregation for a site on ROCK at $V_s=780$ m/s top 30 m USGS CGHT PSHA2002v3 UPDATE Bins with 11 0.05% contrib. omitted

FIGURE H3

Probabilistic Seismic Hazard Deaggregation - 2475-Year Return Time

Baseline Wind Energy Facility

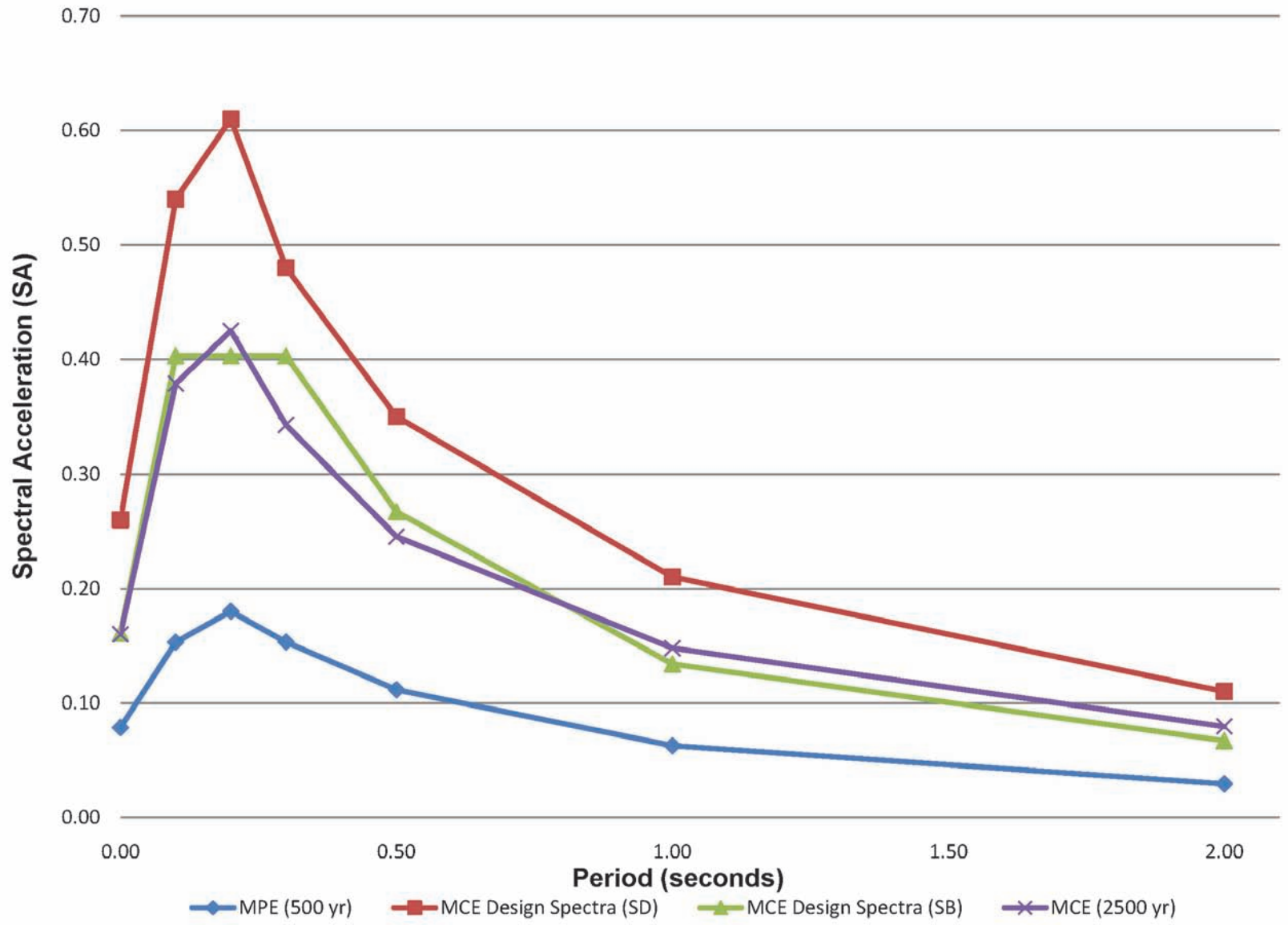


FIGURE H4
 Ground Response Spectra
 Baseline Wind Energy Facility