

# Oregon Approved Insect List

The following insects and other invertebrates are approved for use as pets, pet food, biological control agents, educational displays, and release in Oregon. Note that shipment of some plant pests and some biological control agents across state lines requires a U.S. Department of Agriculture permit (form 526). If you have questions about invertebrates not on this list, permits, releases, etc., check with the Oregon Department of Agriculture (Plant Programs), 635 Capitol Street N.E., Salem, OR 97301-2532, (503) 986-4636. You may view the Oregon Administrative Rules at [http://arcweb.sos.state.or.us/pages/rules/oars\\_600/oar\\_603/603\\_052.html](http://arcweb.sos.state.or.us/pages/rules/oars_600/oar_603/603_052.html).

Key for common usage codes: BC=biological control; ED=education; R=research; H=honey production; C=composter; P=pets; PF=pet food; PL=pollination; RL=releases; B=bait; O=Other.

| Snails (Gastropoda)      |                        | Use |
|--------------------------|------------------------|-----|
| Spike-topped apple snail | <i>Pomacea diffusa</i> | P   |

| Scorpions        |                           | Use  |
|------------------|---------------------------|------|
| Emperor scorpion | <i>Pandinus imperator</i> | ED,P |

| Crustacea        |                            | Use |
|------------------|----------------------------|-----|
| Pillbug          | <i>Armadillium spp.</i>    | ED  |
| Land hermit crab | <i>Coenobita clypeatus</i> | P   |
| Sowbug           | <i>Oniscus spp.</i>        | ED  |

| Earthworms (Annelida)    |                                | Use      |
|--------------------------|--------------------------------|----------|
| Compost earthworm        | <i>Eisenia veneta</i>          | PF, B, C |
| Earthworm                | <i>Lumbricus variegatus</i>    | PF, B, C |
| European earthworm       | <i>Lumbricus terrestris</i>    | PF, B    |
| Grey worm                | <i>Aporrectodea caliginosa</i> | PF, B    |
| Grindal worm or pot worm | <i>Enchytraeus buchholzi</i>   | PF       |
| No common name           | <i>Stylaria spp.</i>           | ED, R    |
| Red worm                 | <i>Lumbricus rubella</i>       | PF       |

| Spiders (Araneae)             |                                      | Use  |
|-------------------------------|--------------------------------------|------|
| Cellar spider                 | <i>Pholcus phalangoides</i>          | ED   |
| Chilean rose-haired tarantula | <i>Grammastola rosea</i>             | ED,P |
| Greenbottle blue tarantula    | <i>Chromatopelma cyaneopubescens</i> | ED,P |
| Mexican redknee tarantula     | <i>Brachypelma smithi</i>            | ED,P |
| Orb weaver spider*            | (Family Araneidae)                   | ED   |
| Pink toed tarantula           | <i>Avicularia avicularia</i>         | ED,P |
| Texan brown tarantula         | <i>Aphonopelma hentzi</i>            | ED,P |
| Wolf spider*                  | (Family Lycosidae)                   | ED   |

\*only from stock collected in the Pacific Northwest

| Millipedes (Diplopoda)        |  | Use  |
|-------------------------------|--|------|
| Desert millipede              | <i>Orthoporus ornatus, O. texicolens</i>         | P    |
| Giant African black millipede | <i>Lophostreptus (=Scaphiostreptus) rutilans</i> | ED,P |
| Giant African millipede       | <i>Archispirostreptus gigas</i>                  | P    |
| Giant millipede               | <i>Thyrophygus spp.</i>                          | ED,P |
| Millipede                     | <i>Spiroboldus spp.</i>                          | ED   |

| Mites (Acari)               |   | Use                |
|-----------------------------|---|--------------------|
| Bindweed gall mite          | <i>Aceria malherbae</i>                   | BC                 |
| Cyclamen mite               | <i>Phytonemus pallidus</i>                | R                  |
| Dried fruit mite            | <i>Carpoglyphus lactis</i>                | predator mite food |
| Dust mite                   | <i>Lepidoglyphus destructor</i>           | predator mite food |
| Flour mite                  | <i>Acaris siro</i>                        | predator mite food |
| Fungus gnat larval predator | <i>Stratiolaelaps aculeifer, S. miles</i> | BC                 |
| Fungus gnat larval predator | <i>Stratiolaelaps scimitus</i>            | BC                 |
| Gorse spider mite           | <i>Tetranychus lintearius</i>             | BC                 |
| Mold mite                   | <i>Tyrophagus putrescentiae</i>           | predator mite food |
| Predatory mite              | <i>Amblyseius barkeri</i>                 | BC                 |
| Predatory mite              | <i>Amblyseius cucumeris</i>               | BC                 |
| Predatory mite              | <i>Amblyseius degenerens</i>              | BC                 |
| Rush skeletonweed gall mite | <i>Eriophyes chondrillae</i>              | BC                 |
| Spider mite predator        | <i>Amblyseius hibisci</i>                 | BC                 |
| Spider mite predator        | <i>Amblyseius mckenziei</i>               | BC                 |
| Spider mite predator        | <i>Galendromus occidentalis</i>           | BC                 |
| Spider mite predator        | <i>Mesoseiulus longipes</i>               | BC                 |
| Spider mite predator        | <i>Neoseiulus californicus</i>            | BC                 |
| Spider mite predator        | <i>Neoseiulus fallacis</i>                | BC                 |
| Spider mite predator        | <i>Phytoseiulus persimilis</i>            | BC                 |
| Tulip bulb mite             | <i>Aceria tulipae</i>                     | R                  |
| Two-spotted spider mite     | <i>Tetranychus urticae</i>                | R                  |



| <b>Roaches (Blattaria)</b>   |                                   | <b>Use</b> |
|------------------------------|-----------------------------------|------------|
| American cockroach           | <i>Periplaneta americana</i>      | ED,R       |
| German cockroach             | <i>Blattella germanica</i>        | ED,R       |
| Giant cockroach              | <i>Blaberus spp.</i>              | ED,P       |
| Hissing cockroach            | <i>Gromphadorhina oblongonata</i> | ED,P       |
| Madagascar hissing cockroach | <i>Gromphadorhina portentosa</i>  | ED,P       |
| Orange-spotted cockroach     | <i>Blaptica dubia</i>             | PF         |
| Oriental cockroach           | <i>Blatta orientalis</i>          | ED,R       |

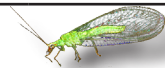
| <b>Mantids (Mantodea)</b> |                                     | <b>Use</b> |
|---------------------------|-------------------------------------|------------|
| Chinese mantis            | <i>Tenodera aridifolia sinensis</i> | ED, BC     |
| European mantis           | <i>Mantis religiosa</i>             | ED, BC     |

| <b>Crickets and Grasshoppers (Orthoptera)</b> |                               | <b>Use</b> |
|---|-------------------------------|------------|
| House cricket                                 | <i>Acheta domesticus</i>      | ED, PF     |
| Tropical house cricket                        | <i>Gryllobates sigillatus</i> | ED, PF     |

| <b>Dragonflies and Damselflies (Odonata)</b> |                     | <b>Use</b> |
|--|---------------------|------------|
| Dragonfly                                    | <i>Aeschna spp.</i> | ED         |

| <b>Thrips (Thysanoptera)</b> |                                   | <b>Use</b> |
|------------------------------|-----------------------------------|------------|
| Gladiolus thrips             | <i>Thrips simplex</i>             | R          |
| Onion thrips                 | <i>Thrips tabaci</i>              | R          |
| Predatory six-spotted thrips | <i>Scolothrips sexmaculatus</i>   | BC*        |
| Tobacco thrips               | <i>Frankliniella fusca</i>        | R          |
| Western flower thrips        | <i>Frankliniella occidentalis</i> | R          |

| <b>Lacewings (Neuroptera)</b> |                            | <b>Use</b> |
|-------------------------------|----------------------------|------------|
| Common green lacewing         | <i>Chrysopa carnea</i>     | BC         |
| Green lacewing                | <i>Chrysopa rufilabris</i> | BC         |



| <b>Isoptera (Termites)</b>   |                                   | <b>Use</b> |
|------------------------------|-----------------------------------|------------|
| Western dampwood termite     | <i>Zootermopsis angusticollis</i> | ED         |
| Western subterranean termite | <i>Reticulitermes hesperus</i>    | ED         |

| <b>True Bugs (Hemiptera)</b> |                             | <b>Use</b> |
|------------------------------|-----------------------------|------------|
| Insidious flower bug         | <i>Orius insidiosus</i>     | BC         |
| Large milkweed bug           | <i>Oncopeltus fasciatus</i> | ED         |
| Tarnished plant bug          | <i>Lygus lineolaris</i>     | ED         |
| Western boxelder bug         | <i>Boisea rubrolineata</i>  | ED         |
| Western tarnished plant bug  | <i>Lygus hesperus</i>       | ED         |

| <b>Plant Lice, Mealybugs, Scales, and Whiteflies (Homoptera)</b> |                                      | <b>Use</b> |
|--|--------------------------------------|------------|
| Artichoke aphid  | <i>Capitophorus elaeagni</i>         | R          |
| Bean aphid   | <i>Aphis fabae</i>                   | R          |
| Bird cherry oat aphid  | <i>Rhopalosiphum padi</i>            | R          |
| Bluegreen aphid  | <i>Acyrtosiphon kondoi</i>           | R          |
| Boat gall aphid  | <i>Hayhurstia atriplicis</i>         | R          |
| Cabbage aphid  | <i>Brevicoryne brassicae</i>         | R          |
| Carrot aphid   | <i>Cavariella aegopodii</i>          | R          |
| Corn root aphid  | <i>Aphis maidiradicis</i>            | R          |
| Cowpea aphid   | <i>Aphis craccivora</i>              | R          |
| English grain aphid  | <i>Sitobion avenae</i>               | R          |
| European fruit lecanium  | <i>arthenolecanium corni</i>         | R          |
| European fruit scale   | <i>Quadraspidiotus ostreaeformis</i> | R          |
| Foxglove aphid   | <i>Aulacorthum solani</i>            | R          |
| Green peach aphid  | <i>Myzus persicae</i>                | R          |
| Greenbug   | <i>Schizaphis graminum</i>           | R          |
| Greenhouse whitefly  | <i>Trialeurodes vaporariorum</i>     | R          |
| Longtailed mealybug  | <i>Pseudococcus longispinus</i>      | R          |
| Melon or cotton aphid  | <i>Aphis gossypii</i>                | R          |
| Oleander aphid   | <i>Aphis nerii</i>                   | R          |
| Oystershell scale  | <i>Lepidosaphes ulmi</i>             | R          |
| Pea aphid  | <i>Acyrtosiphon pisum</i>            | R          |
| Potato aphid   | <i>Macrosiphum euphorbiae</i>        | R          |
| Rose aphid   | <i>Macrosiphum rosae</i>             | R          |
| Rose scale   | <i>Aulacaspis rosae</i>              | R          |
| Spotted alfalfa aphid  | <i>Therioaphis trifolii</i>          | R          |
| Turnip aphid   | <i>Lipaphis pseudobrassicae</i>      | R          |
| Woolly apple aphid   | <i>Eriosoma lanigerum</i>            | R          |

| <b>Beetles (Coleoptera)</b>              |                                    | <b>Use</b> |
|--|------------------------------------|------------|
| Bess beetle                              | <i>Odontotaeniu disjunctus</i>     | E          |
| Black dot leafy spurge flea beetle       | <i>Apthona czwalinae</i>           | BC         |
| Black dot leafy spurge flea beetle       | <i>Apthona nigricutis</i>          | BC         |
| Black-margined loosestrife beetle        | <i>Galerucella californiensis</i>  | BC         |
| Blunt knapweed flower weevil             | <i>Larinus obtusus</i>             | BC         |
| Broad-nosed seed head weevil             | <i>Bangasternus fausti</i>         | BC         |
| Bronze knapweed root borer               | <i>Sphenoptera jugoslavica</i>     | BC         |
| Brown dot leafy spurge flea beetle       | <i>Apthona cyparissiae</i>         | BC         |
| Brown-legged leafy spurge flea beetle    | <i>Apthona lacertosa</i>           | BC         |
| Cadelle                                  | <i>Tenebroides mauritanicus</i>    | ED         |
| Canada thistle stem weevil               | <i>Ceutorhynchus litura</i>        | BC         |
| Cigarette beetle                         | <i>Lasioderma serricorne</i>       | ED, R      |
| Confused flour beetle                    | <i>Tribolium confusum</i>          | ED, R      |
| Convergent ladybeetle                    | <i>Hippodamia convergens</i>       | BC         |
| Copper or amber leafy spurge flea beetle | <i>Apthona flava</i>               | BC         |
| Corn sap beetle                          | <i>Carpophilus dimidiatus</i>      | ED, R      |
| Cowpea weevil                            | <i>Callosobruchus maculatus</i>    | ED, R      |
| Dermestid beetles                        | <i>Dermestes spp.</i>              | ED         |
| Dried fruit beetle                       | <i>Carpophilus hemipterus</i>      | ED, R      |
| Drugstore beetle                         | <i>Stegobium paniceum</i>          | ED         |
| Giant mealworm                           | <i>Zophobas morio</i>              | ED, PF     |
| Golden loosestrife beetle                | <i>Galerucella pusilla</i>         | BC         |
| Gorse seed weevil                        | <i>Exapion ulicis</i>              | BC         |
| Granary weevil                           | <i>Sitophilus granaria</i>         | ED         |
| Granary weevil                           | <i>Sitophilus oryzae</i>           | ED         |
| Histerid beetle                          | <i>Carcinops pumilio</i>           | BC         |
| Klamathweed beetle                       | <i>Chrysolina hyperici</i>         | BC         |
| Klamathweed beetle                       | <i>Chrysolina quadrigemina</i>     | BC         |
| Knapweed root weevil                     | <i>Cyphocleonus achates</i>        | BC         |
| Lesser grain borer                       | <i>Rhyzopertha dominica</i>        | ED         |
| Lesser knapweed flower weevil            | <i>Larinus minutus</i>             | BC         |
| Loosestrife root weevil                  | <i>Hylobius transversovittatus</i> | BC         |
| Loosestrife seed weevil                  | <i>Nanophyes marmoratus</i>        | BC         |
| Mealybug destroyer                       | <i>Crytolaemus montrouzieri</i>    | BC         |
| Mediterranean sage root weevil           | <i>Phrydiuchus tau</i>             | BC         |
| Merchant grain beetle                    | <i>Orzaephilus mercator</i>        | ED         |
| Pea weevil                               | <i>Bruchus pisorum</i>             | ED, R      |
| Puncturevine seed weevil                 | <i>Microlarinus lareynii</i>       | BC         |
| Puncturevine stem weevil                 | <i>Microlarinus lypriformis</i>    | BC         |
| Red flour beetle                         | <i>Tribolium castaneum</i>         | ED, R      |
| Red-necked leafy spurge stem borer       | <i>Oberea erythrocephala</i>       | BC         |
| Sawtoothed grain beetle                  | <i>Orzaephilus surinamensis</i>    | ED         |
| Scotch broom bruchid                     | <i>Bruchidius villosus</i>         | BC         |
| Scotch broom seed weevil                 | <i>Exapion fuscirostre</i>         | BC         |
| Spider mite destroyer                    | <i>Stethorus punctillum</i>        | BC         |
| St. Johnswort borer                      | <i>Agrilus hyperici</i>            | BC         |
| Tansy ragwort flea beetle                | <i>Longitarsus jacobaeae</i>       | BC         |
| Toadflax seed capsule weevil             | <i>Gymnetron antirrhini</i>        | BC         |
| Toadflax stem weevil                     | <i>Mecinus janthinus</i>           | BC         |
| Yellow mealworm                          | <i>Tenebrio molitor</i>            | ED, PF     |
| Yellow mealworm                          | <i>Tenebrio obscurus</i>           | ED, PF     |
| Yellow star thistle bud weevil           | <i>Bangasternus orientalis</i>     | BC         |
| Yellow star thistle flower weevil        | <i>Larinus curtus</i>              | BC         |
| Yellow star thistle hairy weevil         | <i>Eustenopus villosus</i>         | BC         |





| Butterflies and Moths                                    | (Lepidoptera)                          | Use                                       |
|--|--|---|
| Almond moth  | <i>Cadra cautella</i>                  | R   |
| Anise swallowtail butterfly                              | <i>Papilio zelicaon</i>                | ED,RL                                     |
| Beet Armyworm  | <i>Spodoptera exigua</i>               | R   |
| Brown house moth   | <i>Hofmannophila pseudospretella</i>   | R   |
| Butterworm   | <i>Chilecomadia moorei</i>             | PF (USDA permit and irradiation required) |
| Cabbage looper   | <i>Trichoplusia ni</i>                 | R   |
| Cabbage white or imported cabbageworm                    | <i>Pieris rapae</i>                    | ED  |
| Ceanothus silk moth                                      | <i>Hylaphora euryalus</i>              | ED,RL*                                    |
| Cinnabar moth  | <i>Tyria jacobaeae</i>                 | BC  |
| Corn earworm/cotton bollworm/tomato fruitworm            | <i>Helicoverpa zea</i>                 | R   |
| Greater wax moth   | <i>Galleria mellonella</i>             | ED, PF, R                                 |
| Indian meal moth   | <i>Plodia interpunctella</i>           | ED, PF, R                                 |
| Meal moth  | <i>Pyralis farinalis</i>               | ED, PF, R                                 |
| Mediterranean meal moth                                  | <i>Ephestia kuehniella</i>             | ED  |
| Mexican jumping bean                                     | <i>Cydia deshaisiana</i>               | ED, P                                     |
| Mourning cloak   | <i>Nymphalis antiopa</i>               | ED, RL                                    |
| Orange sulfur or alfalfa caterpillar                     | <i>Colias eurytheme</i>                | ED, RL                                    |
| Painted ladies   | <i>Vanessa cardui, V. virginiensis</i> | ED, RL                                    |
| Polyphemus moth  | <i>Antherea polyphemus</i>             | ED *                                      |
| Raisin moth  | <i>Cadra figulilella</i>               | R   |
| Red admiral  | <i>Vanessa atalanta</i>                | ED, RL                                    |
| Russian thistle or tumbleweed casebearer                 | <i>Coleophora klimeschiella</i>        | BC  |
| Russian thistle stem-mining moth or tumbleweed stem moth | <i>Coleophora parthenica</i>           | BC  |
| Rusty tussock moth                                       | <i>Orgyia antiqua</i>                  | R   |
| Saltmarsh caterpillar                                    | <i>Estigmene acrea</i>                 | ED*                                       |
| Scotch broom twig miner                                  | <i>Leucoptera spartifoliella</i>       | BC  |
| Silkworm   | <i>Bombyx mori</i>                     | ED, R                                     |
| Spotted knapweed seedhead moth                           | <i>Metzneria paucipunctella</i>        | BC  |
| St. Johnswort moth                                       | <i>Aplocera plagiata</i>               | BC  |
| Sulfur knapweed moth                                     | <i>Agapeta zoegana</i>                 | BC  |
| Toadflax moth  | <i>Calophasia lunula</i>               | BC  |
| Tobacco budworm  | <i>Heliothis virescens</i>             | R   |
| Tomato hornworm  | <i>Manduca quinquemaculata</i>         | ED, R                                     |
| Tomato hornworm  | <i>Manduca sexta</i>                   | ED, R                                     |
| Western tiger swallowtail butterfly                      | <i>Papilio rutulus</i>                 | ED, RL                                    |
| Whiteline sphinx moth                                    | <i>Hyles lineata</i>                   | ED  |
| Woolly bear  | <i>Pyrrarctia isabella</i>             | ED*                                       |



\*only from stock collected in the western U.S.



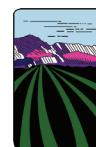
| Diptera (Flies)                 |                                | Use   |
|---------------------------------|--------------------------------|-------|
| Aphid predator midge            | <i>Aphidoletes aphidimyza</i>  | BC    |
| Banded gall fly                 | <i>Urophora affinis</i>        | BC    |
| Black soldier fly               | <i>Hermetia illucens</i>       | C     |
| Blow and bottle flies           | <i>Calliphora spp.</i>         | ED    |
| Bull thistle seed head gall fly | <i>Urophora stylata</i>        | BC    |
| Canada thistle stem gall fly    | <i>Urophora cardui</i>         | BC    |
| Darkwinged fungus gnats         | <i>Bradysia spp.</i>           | R     |
| European hover fly              | <i>Eristalis tenax</i>         | B     |
| Filth fly parasitoid            | <i>Musciidifurax zaraptor</i>  | BC    |
| Filth fly parasitoid            | <i>Nasonia vitripennis</i>     | BC    |
| Filth fly parasitoid            | <i>Spalangia cameroni</i>      | BC    |
| Filth fly parasitoid            | <i>Spalangia endius</i>        | BC    |
| Green clearwing fly             | <i>Terellia virens</i>         | BC    |
| Grey flesh fly                  | <i>Sarcophaga bullata</i>      | ED, R |
| Knapweed peacock fly            | <i>Chaetorellia acrolophi</i>  | BC    |
| Mosquito                        | <i>Culex spp.</i>              | ED, R |
| Ragwort seed head fly           | <i>Botanophila seneciella</i>  | BC    |
| Rush skeletonweed gall midge    | <i>Cystiphora schmidti</i>     | BC    |
| Seedcorn maggot                 | <i>Delia platura</i>           | R     |
| Serpentine leafminer            | <i>Liriomyza brassicae</i>     | R     |
| UV knapweed seed head fly       | <i>Urophora quadrifasciata</i> | BC    |
| Vinegar fly                     | <i>Drosophila hydei</i>        | ED, R |
| Vinegar fly                     | <i>Drosophila melanogaster</i> | ED, R |
| Vinegar fly                     | <i>Drosophila mohavensis</i>   | ED, R |
| Vinegar fly                     | <i>Drosophila virilis</i>      | ED, R |
| Yellow star thistle gall fly    | <i>Urophora sirunaseva</i>     | BC    |
| Yellow star thistle peacock fly | <i>Chaetorellia australis</i>  | BC    |

| Ants, Bees, and Wasps                             | (Hymenoptera)  | Use |
|---|--|-----|
| Alfalfa leafcutter bee                            | <i>Megachile rotundata</i>   | PL  |
| Alkali bee  | <i>Nomia melanderi</i>   | PL  |
| Aphid parasitoid                                  | <i>Aphidius aphidimyza</i>   | BC  |
| Aphid parasitoid                                  | <i>Aphidius colemani</i>   | BC  |
| Aphid parasitoid                                  | <i>Aphidius ervi</i>   | BC  |
| Aphid parasitoid                                  | <i>Aphidius matricariae</i>  | BC  |
| Aphid parasitoid                                  | <i>Lysiphlebus testaceipes</i>   | BC  |
| Aphid parasitoid                                  | <i>Trioxys pallidus</i>  | BC  |
| Blue orchard bee or mason bee                     | <i>Osmia lignaria propinqua</i>  | PL  |
| Bumblebees native to Oregon                       | e.g. <i>Bombus vosnesenskii</i> , <i>B. bifarius</i> , <i>B. californicus</i> , <i>B. griseocolis</i> , <i>B. melanopygus</i> , <i>B. mixtus</i> | PL  |
| Egg and larval parasitoid of stored product pests | <i>Bracon hebetor</i>  | BC  |
| Egg and larval parasitoid of stored product pests | <i>Cotesia plutellae</i>   | BC  |
| European honeybee                                 | <i>Apis mellifera mellifera</i>  | PL  |
| Harvester ant                                     | <i>Pogonomyrmex owyheeii</i>   | ED  |
| Harvester ant                                     | <i>Pogonomyrmex salinus</i>  | ED  |
| Italian honeybee                                  | <i>Apis mellifera ligustica</i>  | PL  |
| Parasitoid of Lepidoptera eggs                    | <i>Trichogramma minutum</i>  | BC  |
| Parasitoid of Lepidoptera eggs                    | <i>Trichogramma platneri</i>   | BC  |
| Parasitoid of Lepidoptera eggs                    | <i>Trichogramma pretiosum</i>  | BC  |
| Weevil larva parasitoid                           | <i>Anisopteromalus calandrae</i>   | BC  |
| Whitefly parasitoid                               | <i>Encarsia formosa</i>  | BC  |
| Whitefly parasitoid                               | <i>Eretmocerus californicus</i>  | BC  |



### For further information please contact:

Oregon Department of Agriculture  
 Plant Division  
 635 Capitol St. NE  
 Salem, OR 97301-2532  
 503-986-4636 or 1-800-525-0137  
[www.oregon.gov/ODA](http://www.oregon.gov/ODA)



**Oregon**  
 Department  
 of Agriculture



revised: 6/2017