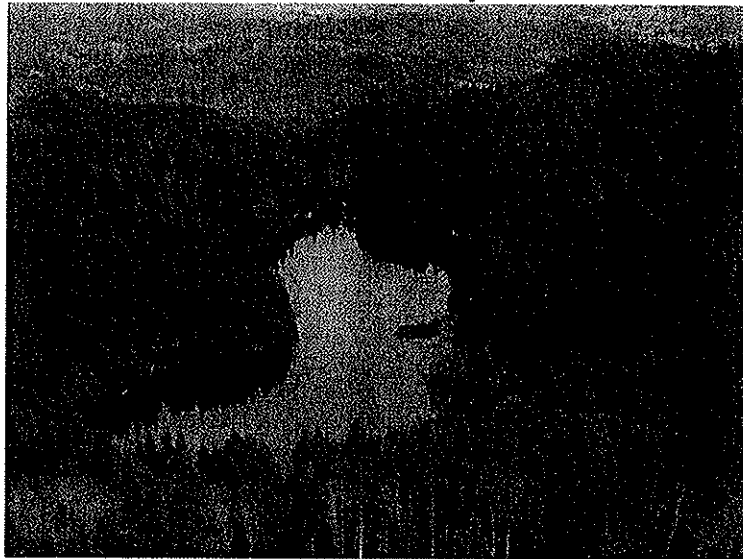
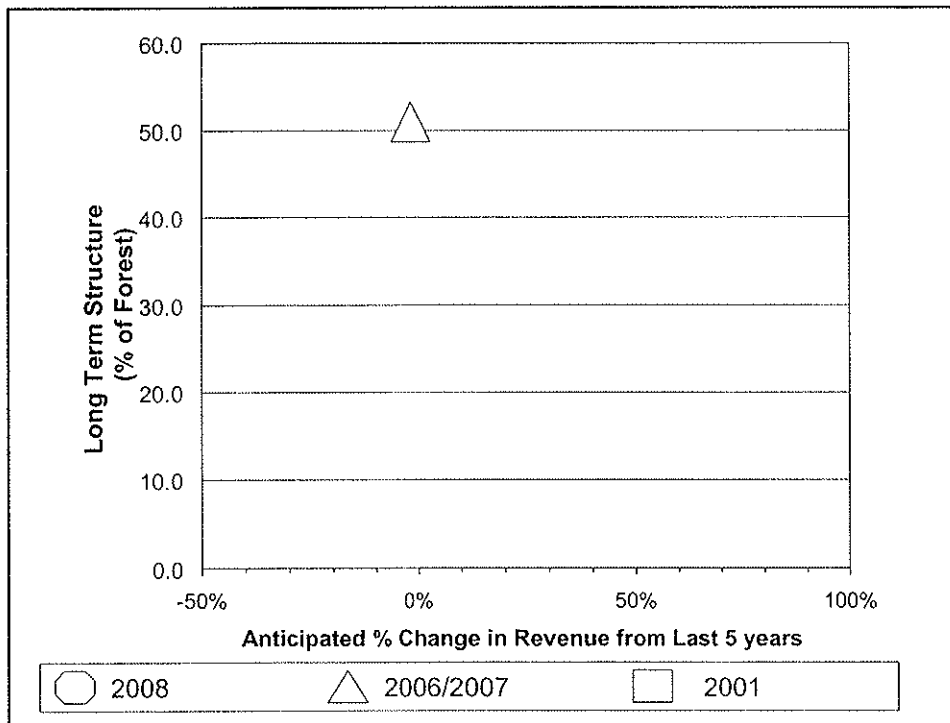
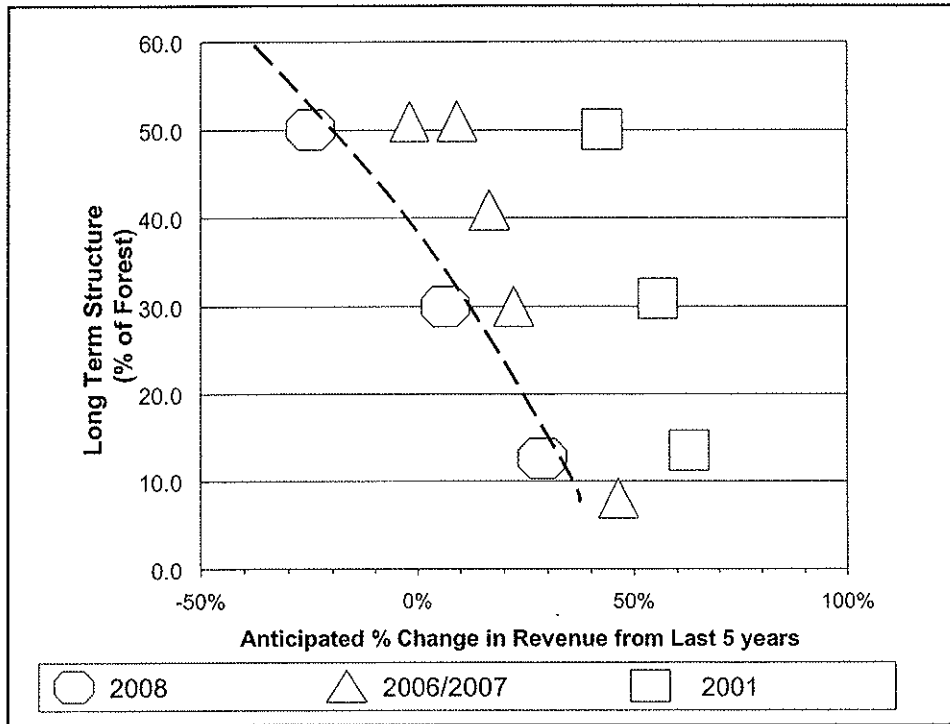
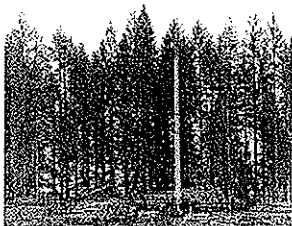
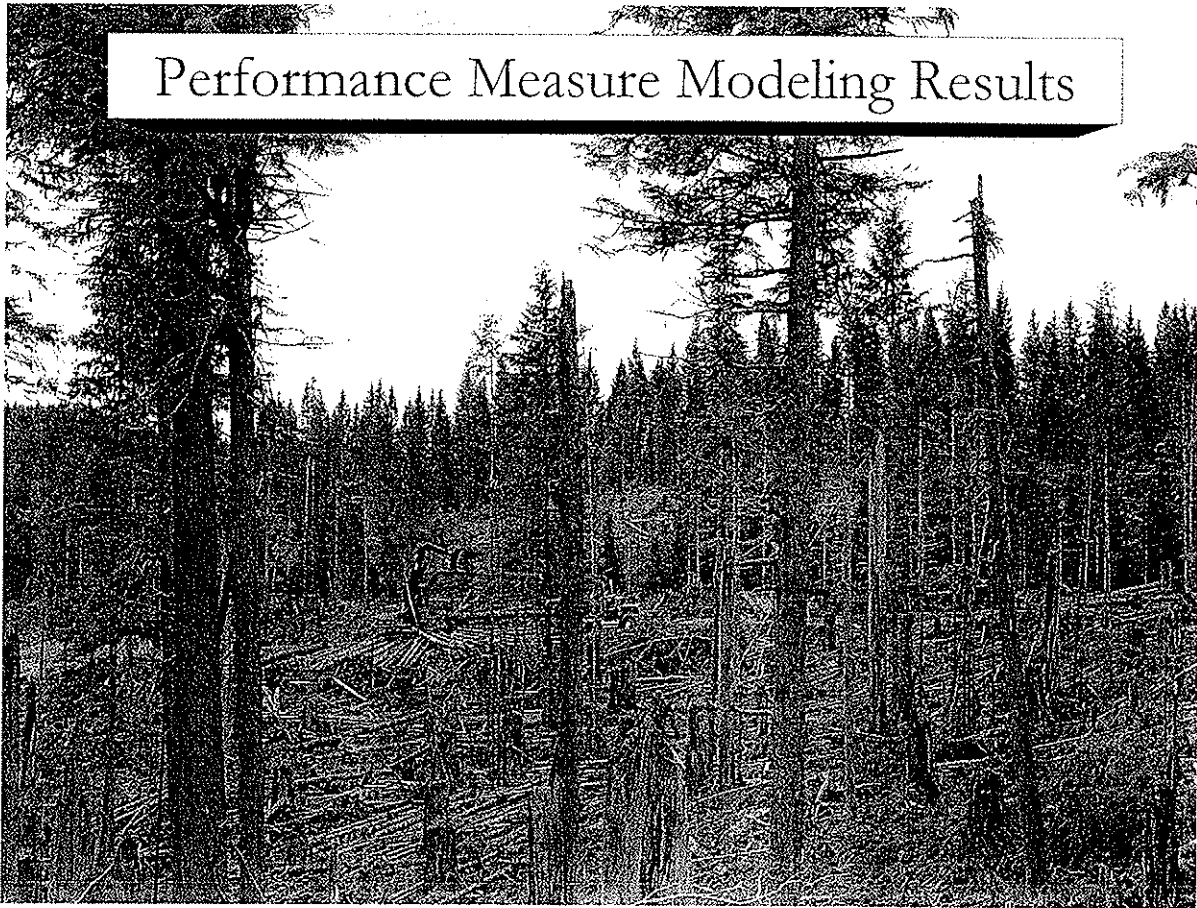


*Welcome*  
Board of Forestry Meeting  
November 6, 2008





# Performance Measure Modeling Results



## Presentation Outline



- **Model Scenario Results**
  - Performance Measure Model
  - NW FMP Comparison Model – “Base Case”
  - Wood Emphasis Comparison Model
  
- **Achievement of Performance Measure Targets**

--	--

# Performance Measure Scenario

---

- Strive to meet 17 – 20% complex structure target in 20 years
- Strive to increase revenue by 30 – 35% in 20 years
- Model outputs displayed for 80 years

--	--

## Performance Measure Scenario Strategy Development

---

- Department decisions to utilize :
  - Guiding Principles, Vision and Goals form Chapter 3 NW FMP
  - NW FMP Aquatic and Riparian Strategies
  - NW FMP Green Tree Retention, Snags and Down Wood Strategies
  - ODF take avoidance policies for Northern Spotted Owls and Marbled Murrelets

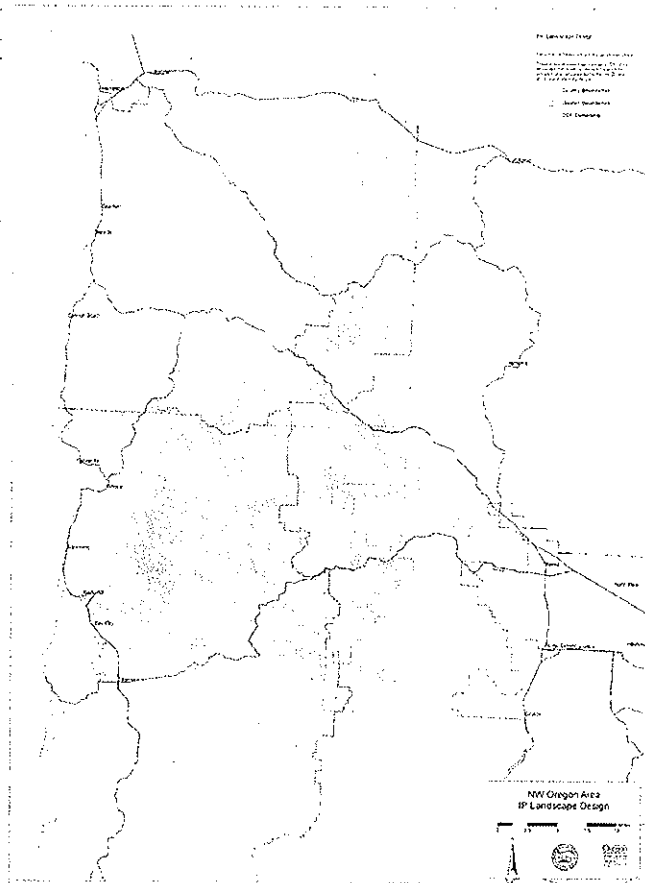
---

---

## 20% Complex Structure landscape Design

---

Designed to provide the  
greatest benefit for  
Species of Concern in  
the next 20 years



---

---

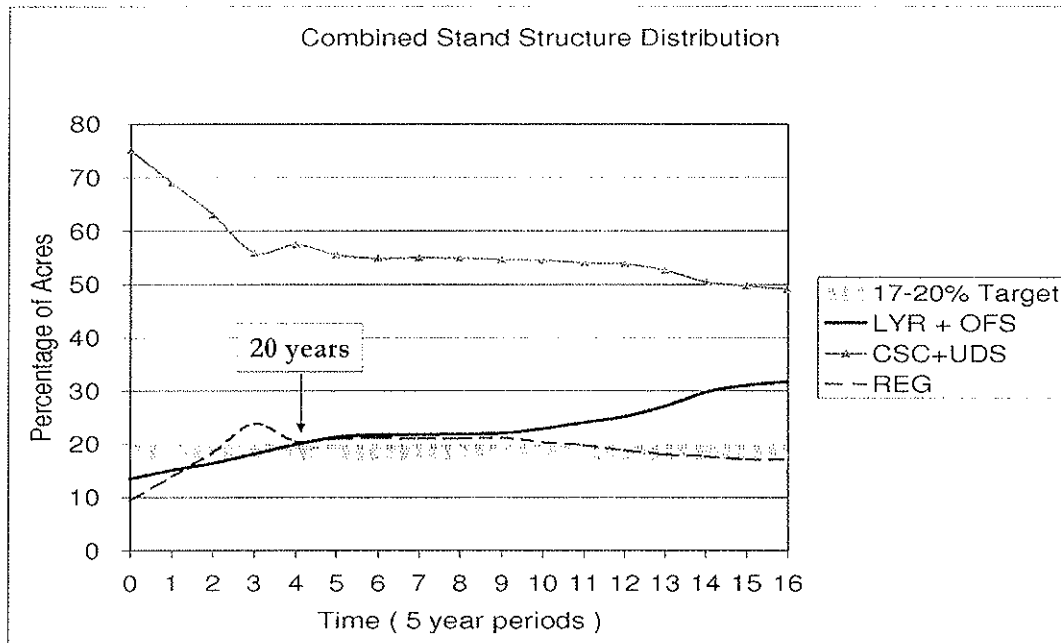
## Performance Measure Scenario Model Assumptions

- Assumes:
  - Areas designated for 17- 20% complex can not be clear cut in first 20 years (thinning is allowed)
  - Clear cutting can occur after 20 years in areas noted above
  - Salmon Anchor Habit policies remain in place until 2013
  - Harvest of severely infected stand with Swiss Needle Cast on Tillamook District occurs in the first 15 years

---

---

## Performance Measure Model Results for Stand Structure (Target = 17-20% in 20 Years)



---

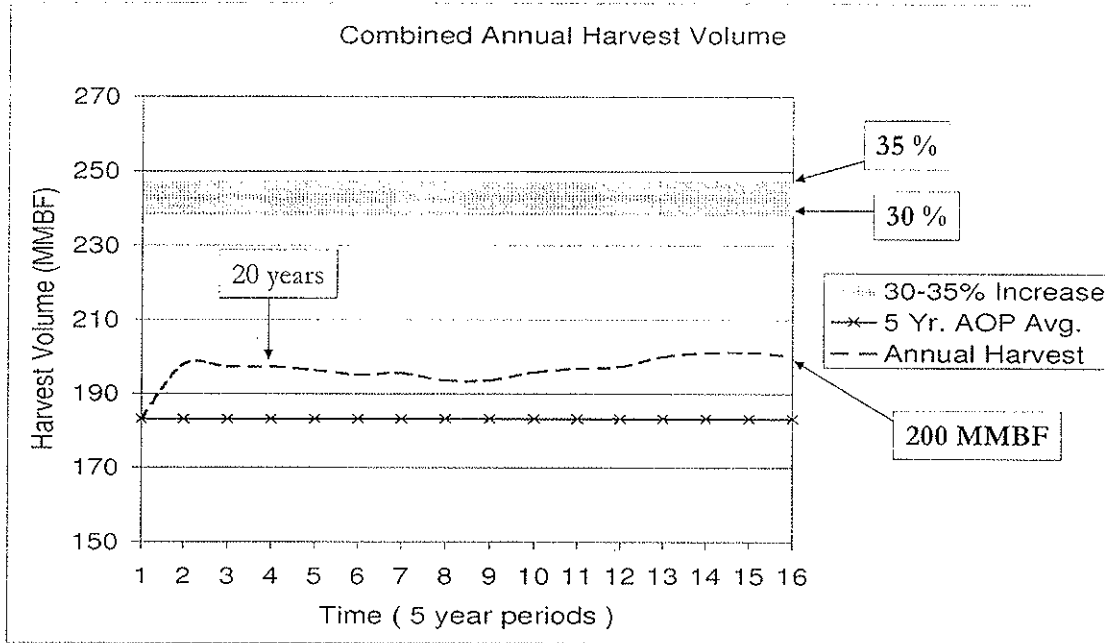
---

## Performance Measure Model Results for Stand Structure (Target = 17-20% in 20 Years)

---

- 17% Complex Structure Achieved in 15 years
- 20 % Complex Structure Achieved in 20 years
- Predicted 32% Complex Structure would be achieved in 80 years if management strategies remained the same beyond 20 years

Performance Measure Model Results for Revenue Increase  
(Target = 30-35% Increase)

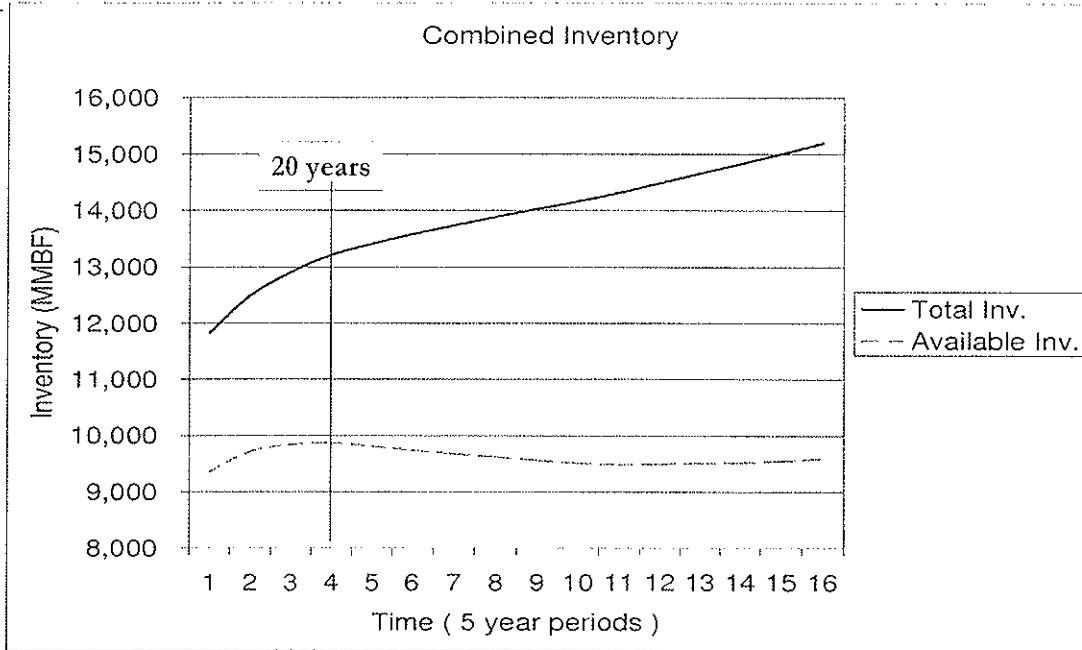


Performance Measure Model Results for Harvest Volume  
(Target = 30-35% Increase)

- Approximately 9% increase in revenue is achieved
- This is derived from a non-declining sustained yield of 200 MMBF
- The majority of the volume increase is from the Clatsop State Forest
- Increasing occurs in 5 years and is sustainable over time
- Baseline harvest level is 183.2 MMBF based on an average of previous five years Annual Operations Plan objectives

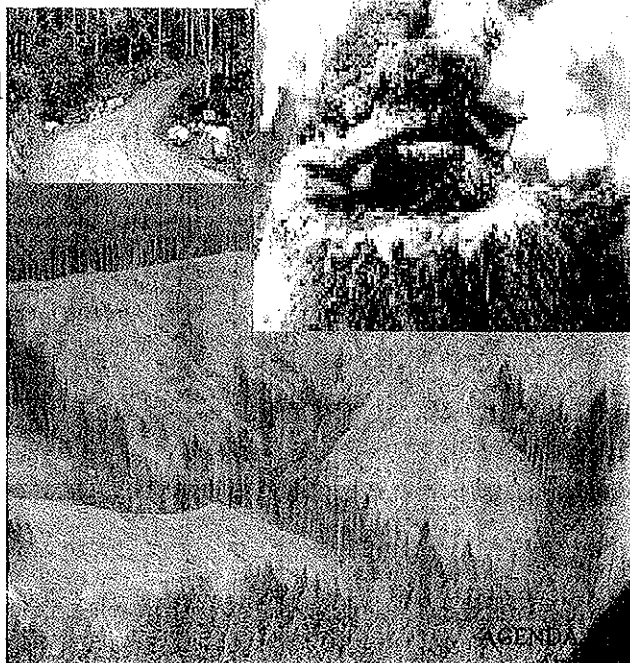
Performance measure model results for standing timber inventory:

- Total inventory increases over time
- Available inventory is harvested at a sustainable level



## Description of Unavailable Acres

- FPA Requirements
- Administratively Removed
- Roads
- Non-Forest
- Riparian Inner Zones
- Marbled Murrelet Management Areas
- Northern Spotted Owl Areas
- Operationally Limited Areas

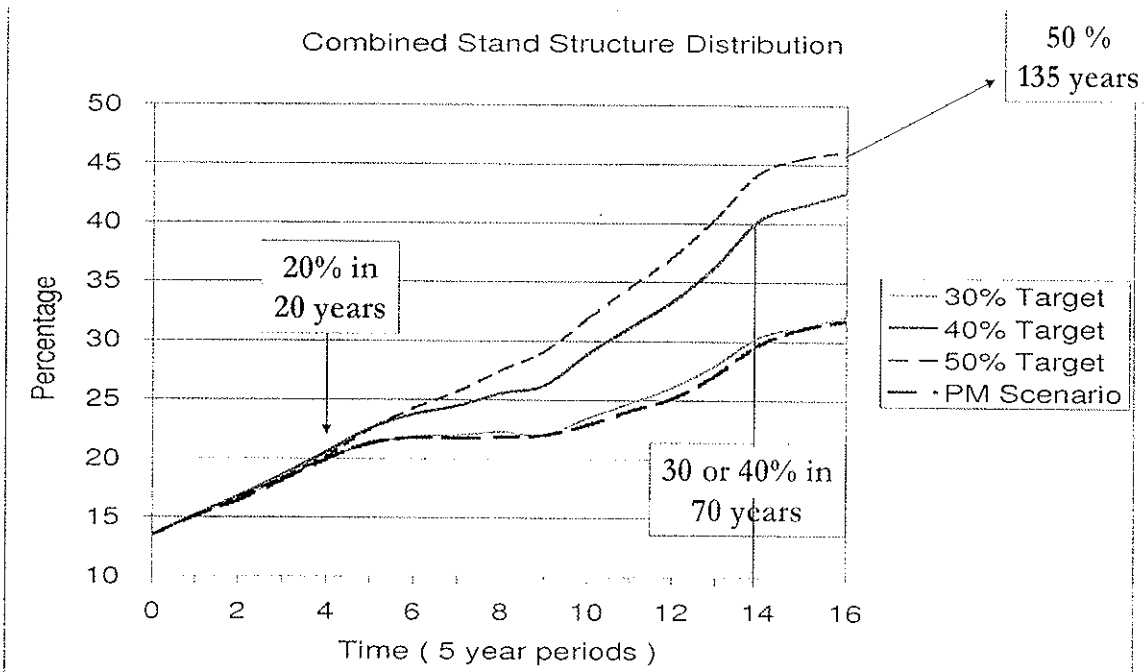


## Future Options After 20 Years

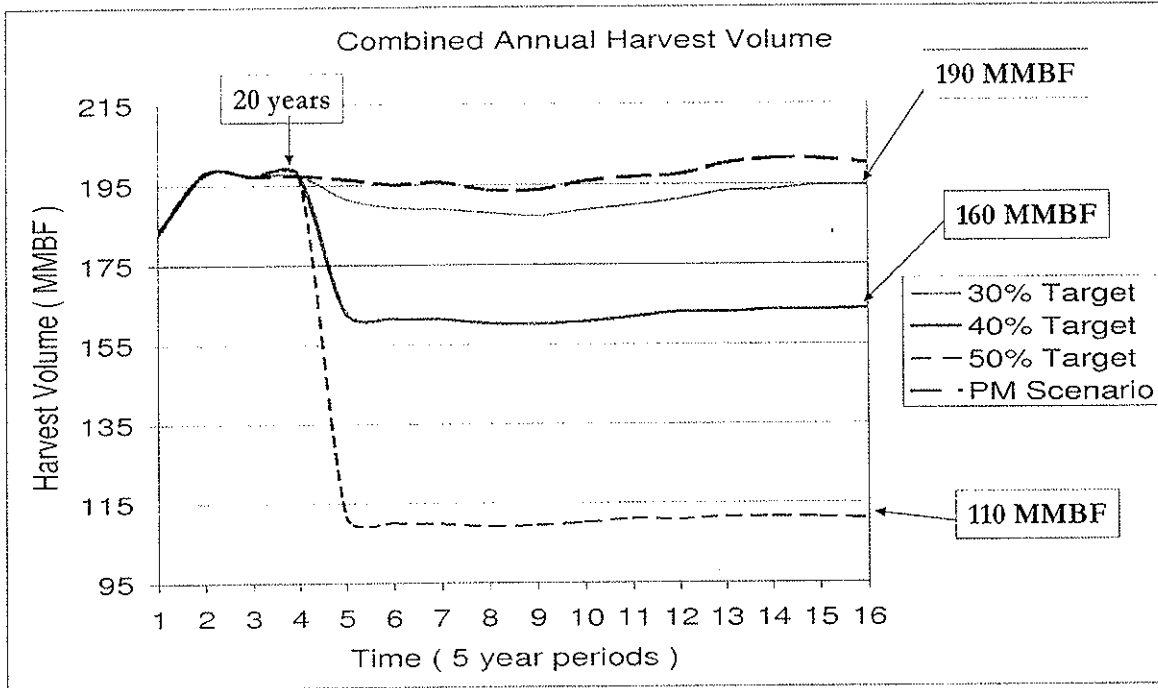


- Trends were modeled for changes to complex structure targets after 20 years of implementing the performance measure model
- Trends were modeled increasing to 30%, 40% and 50% complex structure after 20 years

### Expected time to achieve different complex structure goals if directed after 20 Years



Model results for changes in timber volume if an alternative structure targets is desired After 20 Years



## NW FMP - Base Case Scenario

- Simulates NW FMP strategies as being implemented
- Basis for comparison to Performance Measure model



---

---

# NW FMP - Base Case Scenario

## Model Strategies

---



- **Simulates:**
  - All strategies in Performance Measure model
  - Utilizes 50% desired future condition landscape design
  - No clear cutting allowed in mapped landscape design until desired future condition is achieved (thinning allowed)

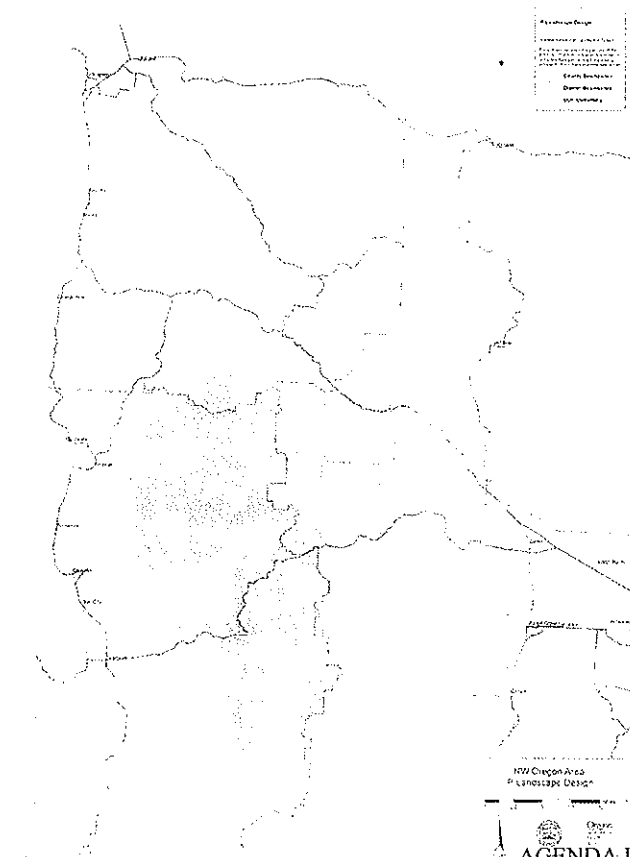
---

---

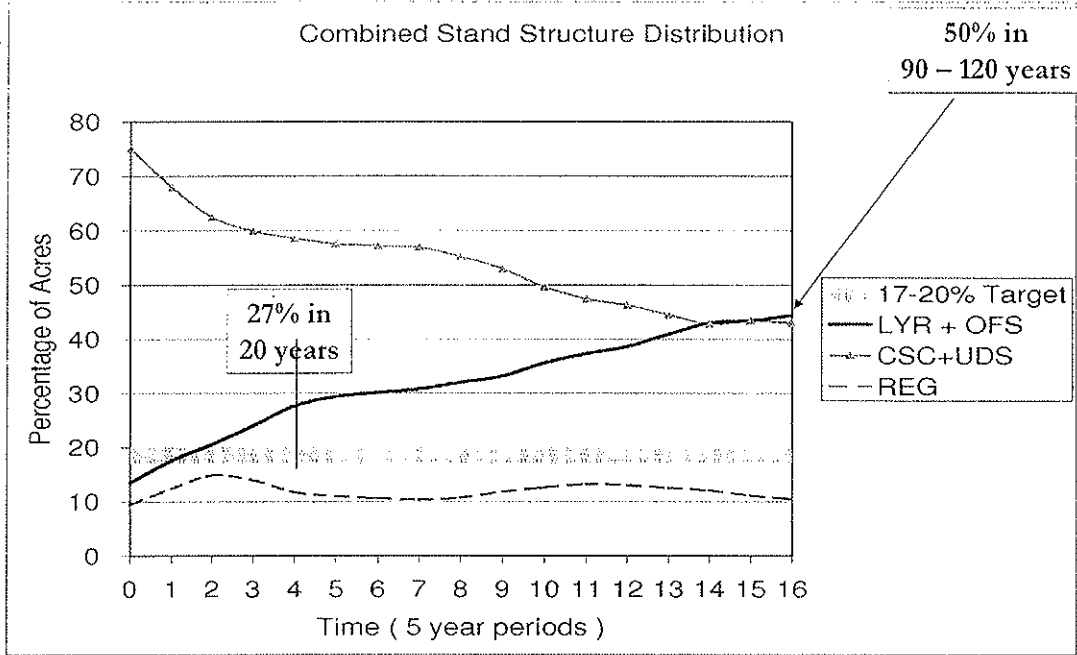
### 50% Complex Structure Landscape Design

---

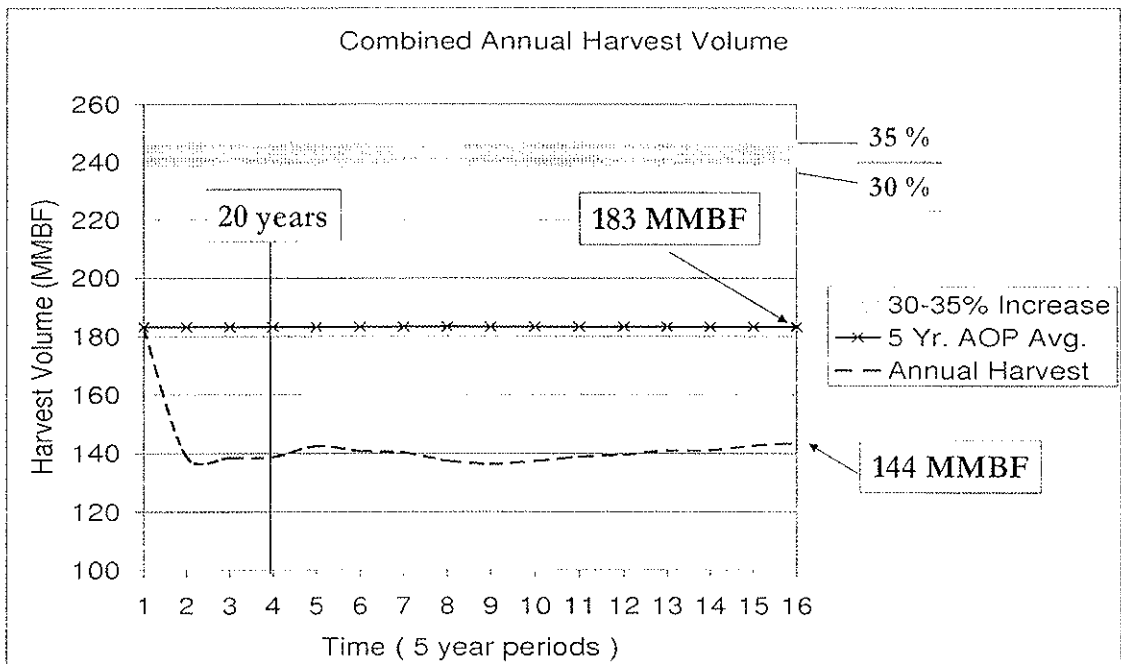
Designed to provide for a functional arrangement stand types in terms of habitat values for native fish and wildlife



**Base Case - Stand Structure**  
 (Target = 50% Complex Structure Long Term)

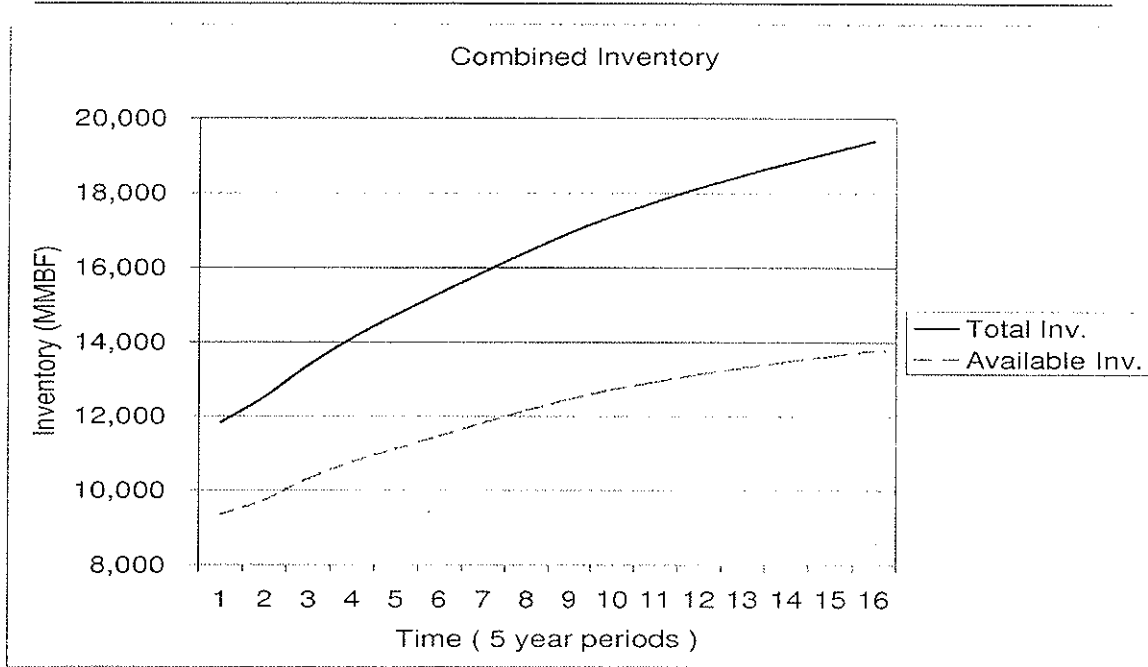


**Base Case - Predicted Revenue**  
 (Target = Sustainable and Predictable Revenue)



**Base Case - timber inventory:**

- Total inventory increases over time
- Available inventory increases over time



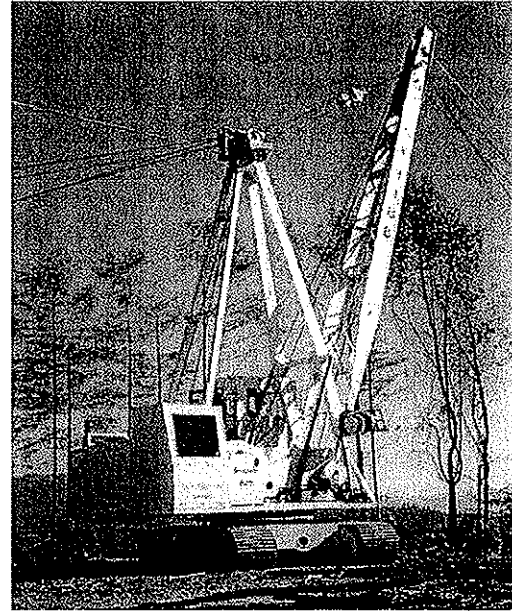
## Wood Emphasis Scenarios



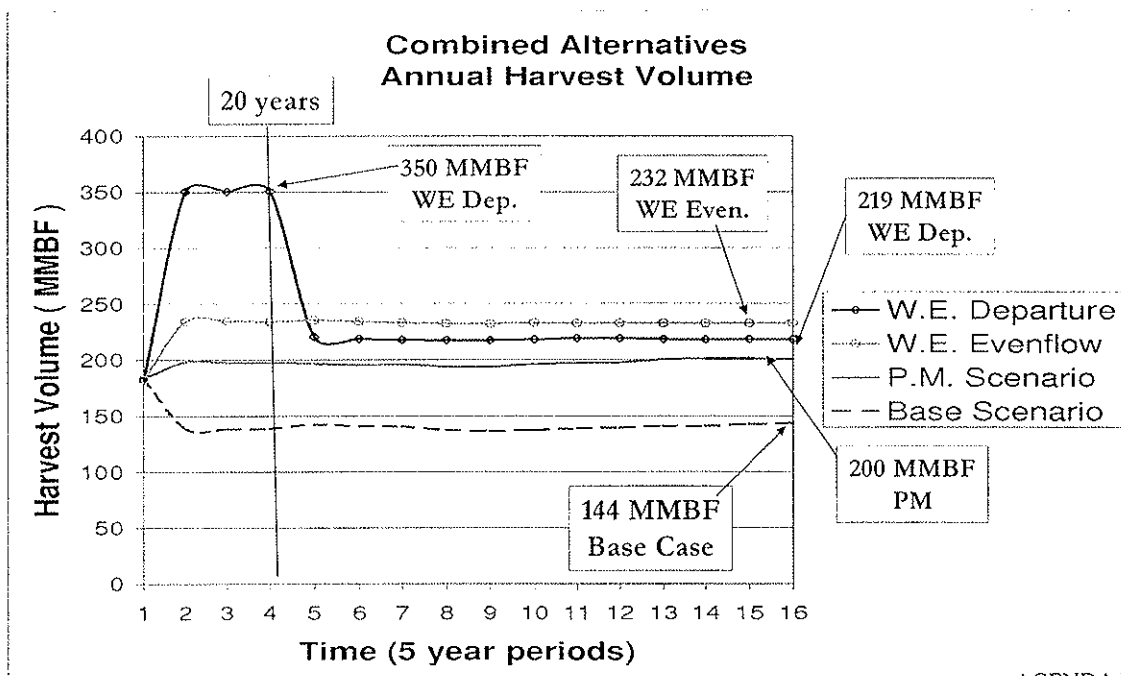
- Two scenarios modeled
- Departure from long term even flow in years 5 to 20, then even flow
- Even flow of timber in years 5 to 80
- Both scenarios used current harvest levels for the first 5 years

# Wood Emphasis Strategies

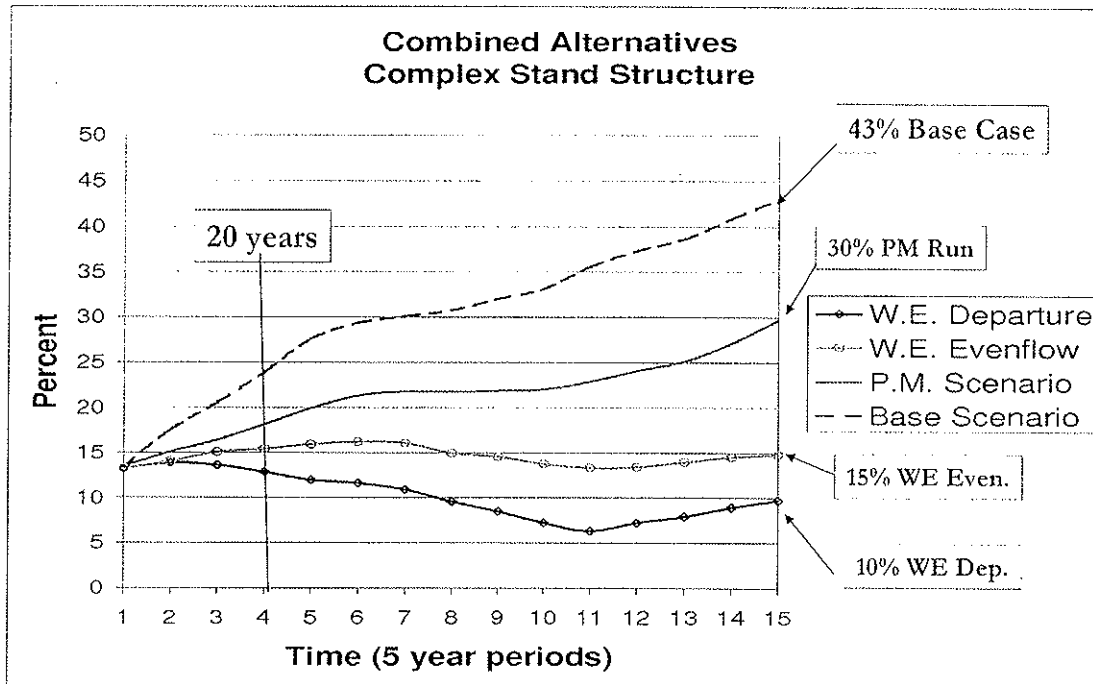
- FPA Stream Rules
- ODF Take Avoidance
- No Complex Structure Goal
- Strive for high NPV
- Average Clear Cut Age 50 years



## Comparison of Modeled Volume Outputs



## Comparison of Modeled Stand Structure Outputs



## Performance Measure Model Results Compared with all Performance Measure Targets

### PM 1 - Net Return on Asset Value - ROAV:

- **Target:** Achieve a ROAV (5-year average) consistent with the achievement of the target established for performance measure #3 (financial contributions to government services)
- **Result:** Achievement of this performance measure is linked to the results of PM No. 3. Since the target for PM No. 3 could not be attained, the result is the target for PM

--	--

## Performance Measure Model Results Compared with all Performance Measure Targets

---

### PM 2 - Financial Contributions to Communities:

- **Target:** Maintain or improve this measure, consistent with other performance measures targets
- **Result:** Results indicate alignment with the target of “maintain or improve.”



--	--

## Performance Measure Model Results Compared with all Performance Measure Targets

---

### PM 3 - Financial Contributions to Government Services:

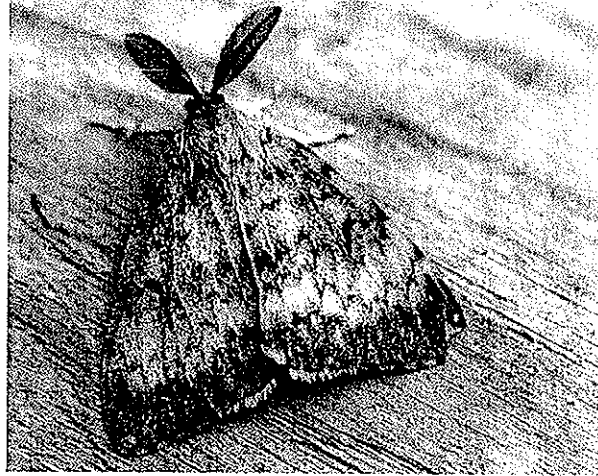
- **Target:** Increase the annual revenues (5-year average), adjusted for inflation, produced by BOF lands by 30-35 percent within the next ten years, and meet or exceed that level for the subsequent ten years
- **Result:** An increase of approximately 9 percent was able to be achieved within the first 10 years and sustained for a sustained for the subsequent 10 years

--	--

## Performance Measure Model Results Compared with all Performance Measure Targets

PM 4 - State forest area affected by  
or at risk of Invasive species, pests,  
disease and fire:

- **Target:** Maintain or improve these three measures, consistent with other performance measures targets
- **Results:** Indicate alignment with the target of “maintain or improve .”



--	--

## Performance Measure Model Results Compared with all Performance Measure Targets

PM 5 - Forest road risks to water quality and fish

Habitat:

- **Target:** Reduce the miles of hydrologically connected roads to less-than 15 percent; reduce the number of road crossings that are barriers to fish passage to less-than 2 percent within the next ten years
- **Results:** Indicate alignment with the target of “maintain or improve;” consistent with the Biennial Performance Report data

--	--

## Performance Measure Model Results Compared with all Performance Measure Targets

---

### PM 6 - Quantities of habitat by FMP stand-structure type and habitat components, and the use of those areas by native fish and wildlife:

- **Target:** Increase the percent of the landscape in complex structure to at least 17 to 20 percent over the next two decades; identify specific strategies (including landscape design modifications) to maintain, enhance, and restore habitats for species of concern
- **Results:** To be reported next by ODF and ODFW Staff Specialists

--	--

## Performance Measure Model Results Compared with all Performance Measure Targets

---

### PM 7 - Recreation and Educational Programs:

- **Target:** Maintain current recreational and educational benefits consistent with existing and anticipated future resources
- **Results:** Indicate alignment with the target of “maintain or improve .” It is recognized that increasing revenue, consistent with the results of PM 3, will produce benefits in terms of revenue to maintain recreation trails, facilities and educational programs

--	--

## Performance Measure Model Results Compared with all Performance Measure Targets

PM 8 - Public & Stakeholder  
Involvement, PM- 9 Oregonian's  
Awareness & Support:

- **Target:** Maintain or improve these three measures, consistent with other performance measures targets
- **Results:** Indicate alignment with the target of “maintain or improve;” consistent with the Biennial Performance Report data



--	--

## Questions and Discussion

