



## Background

In March, 3 questions posed for issue paper development:

- How and where should performance measures be codified into policy?
- Are any adjustments to BOF/State Forester decision authorities warranted?
- *What adjustments to review framework to incorporate PMs and make more effective?*

## Background

- BOF issue scan process (2007)
- Work needed on SF planning, decision making, and review framework
- January – work plan reviewed with Board;
- March - Background paper

## Presentation Overview

- Context for Adaptive Management
- Performance Measure Reporting
- Research and Monitoring Assessments
- Information Review and Analysis
- Next Steps

## Context for Adaptive Management

---

- General description of Adapt. Mgmt. in FMPs
- Move from the general to the specific

## Research and Monitoring Assessments

---

- Scheduled review of scientific information
  - Research and monitoring themes
  - FMP management strategies
  - Academic research
  - Expert opinion

## Performance Measure Reporting

---

- Biennial schedule (Next report Nov.08)
- Allow assessment of:
  - Meeting performance measure targets
  - Need adjustment to measures, targets, metrics
  - Potential changes to management practices
  - Review process working as expected

## Anticipated Review Schedule

---

RESEARCH & MONITORING REVIEW

R&M Performance Measure Strategy Integration Body/FCO  
 Young Stand Management  
 Forest Health  
 Aquatic and Riparian Habitat  
 Shore State Wildlife Habitat

## Research and Monitoring Assessments

- Requests for review
  - BOF (e.g. result of systematic evidence review, changing values, response to public request)
  - Division staff, resource specialists, district personnel
  - General public at BOF meetings

## Research and Monitoring Assessments

- Requests relate to:
  - Research and monitoring of specific issues
  - Interpretation and modifications to policies
  - Review of studies for change proposals
  - External reviews suggesting adjustments
- Scientific and policy review same for scheduled and requested reviews

## Pathways for Information Gathering and Analysis

Pathway	Advantages	Disadvantages
Biennial review of performance measures	Transparent, predictable review cycle Opportunity to adjust targets or measures	Quantitative targets not available for all measures Unpredictable changes may not occur.
Scheduled review of research & monitoring themes	Transparent, predictable review cycle Focus on management strategies	Sufficient information may not be available at designated review points Staff/time/budget constraints
Requests for review of information	Responds to new issues	Less transparent, complex process Could lead to "system overload" if not properly managed.

## Information Review and Analysis

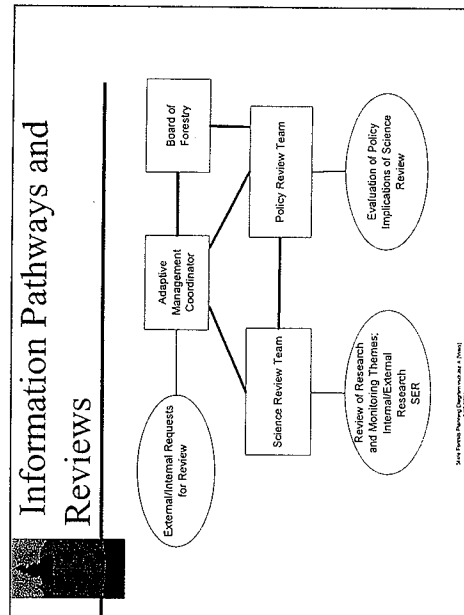
- Many sources of information:
  - BOF Performance Measure reports
  - ODF research monitoring projects
  - "Other" academic research
  - Operational feedback
  - General public

### Information Review and Analysis

- “Science Phase” → Science Review Team
  - Interpret information for scientific implications
  - Make recommendations for use in policy discussions
- “Policy Phase” → Policy Review Team
  - Internal or external
  - Recommendations to BOF, State Forester, etc.


### Information Review and Analysis

- Recommendations could be for:
  - No change
  - Revision of guidance
  - Adjustment of management strategies or performance measures/targets
  - Additional research
- Outline options reflecting tradeoffs related to policy decisions



### Information Review and Analysis

- Recommendations for change could result from:
  - New information about the forest
  - Results of effectiveness monitoring projects
  - Desired outputs not achieved
  - Change in interpretation of balance needed to achieve GPV



## Responsibilities of Science and Policy Review Teams

Information Source	Science Review Team	Policy Review Team
BOF Performance Measures	Evaluate info to determine meeting PM targets Assess changes in relationships among all PMs Report conclusions to Policy Review Team	Assess policy relevance of meeting/not meeting PM targets Assess policy relevance of changes in relationships among PMs Recommend no action, additional data collection, or proposals to change targets/measures as necessary
Research and Monitoring Themes FMP Management Strategies	Evaluate info related to current theme: •ODF research and monitoring •Academic research •Expert opinion Report conclusions to Policy Review Team	Assess policy relevance of conclusions from Science Review Team Recommend no action, additional research, or proposals to change management strategies as necessary
Requested Review of Scientific Information	Determine scientific relevance of request Determine timing of review (e.g. with PM review or with R&M review) Evaluate info related to request: •ODF research and monitoring •Academic research •Expert opinion Report conclusions to Policy Review Team	Assess policy relevance of conclusions from Science Review Team Recommend no action, additional research, or proposals to change management strategies



## Next Steps

- BOF to provide guidance for further development of the information management process
- Department incorporates feedback into final description of the processes in Adapt. Mgmt.
- Return with specific recommendations