

NORTHEAST OREGON DISTRICT



2008 STATISTICAL REPORT

Marvin D. Brown
State Forester

John Buckman
District Forester

DISTRICT FORESTER'S COMMENTS

You may notice the new look to our annual report for Northeast Oregon (NEO) District this year. In an effort to be efficient and concise, the District's Annual Report will focus on providing you with easy to review charts, graphs and short narratives to illustrate the accomplishments, trends and challenges faced by the District. Please take a few minutes to visit with District staff if more information is needed on any topic that is included in this report.

By recent standards, the fire activity in NEO District was modest and the District did well in minimizing acres burned and controlling fire suppression costs. The one notable exception to the modest season occurred in the Pendleton Unit. The west side of the District was pushed hard in early August by abundant lightning but managed to hang-on and staff several high potential fires with personnel from the District and our cooperators. On a District basis, this was a welcomed relief and we hope the start of a new trend.

NEO District is embarking on a district-wide forestland classification review. This review, led by the efforts in Wallowa County, is long overdue and will assist the District in assuring and implementing a fair and equitable forestland classification and assessment program. The District is appreciative of local support that we have obtained from the County Commissioners in northeast Oregon and the landowners that have volunteered their time and insight to assist on this important project.

The Private Forest program in NEO continues to adapt and respond to opportunities to assist landowners in their efforts at managing their forests. In addition to administering the Oregon Forest Practices Act and providing key assistance to the fire program, these foresters have been very active administering significant National Fire Plan fuel reduction grants with landowners in the District.

Lastly, I would like to express my sincere appreciation to the staff in NEO District. This business requires long hours and hard work to address workload spikes associated with fire and field activities. To a person, the District employees continue to rise to these challenges to accomplish the needed work.

John Buckman
Northeast Oregon District Forester

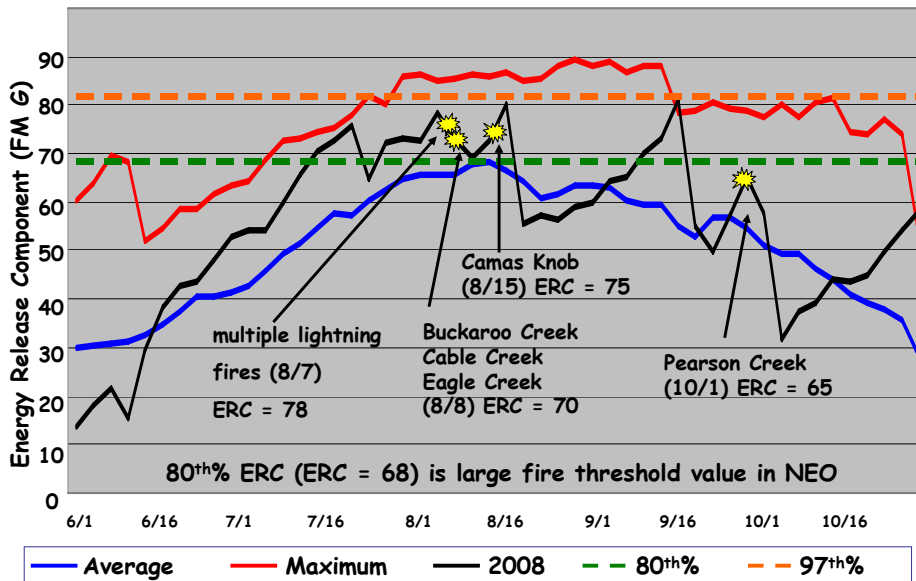
BUDGET COMMITTEE MEMBERS

The Northeast Oregon District continues to have a strong Budget Committee that is supportive of District activities and provides valued input to manage and improve District operations.

- **Chris Heffernan**, Union County, Budget Committee Chair, non-industrial private landowner and rancher.
- **John Warness**, Union County, EOFPA President, Regional Manager Northeast Oregon Operations for Forest Capital Partners.
- **Bob Messinger**, Union County, small non-industrial forest owner.
- **Lyle Defrees**, Baker County, EOFPA Director, non-industrial private landowner and rancher.
- **Bill Shumway**, Baker County, EOFPA Director, non-industrial private landowner and rancher.
- **Pat Sullivan**, Baker County, non-industrial private landowner and rancher.
- **Elwayne Henderson**, Wallowa County, non-industrial private landowner and forest operator.
- **Mack Birkmaier**, Wallowa County, non-industrial private landowner and rancher.
- **Hank Howard**, Umatilla County, forest and rangeland manager for Pacific Northwest Tree Farm.
- **Bob Holowecky**, Umatilla County, private forester representing Pendleton Ranches and Cunningham Sheep.

PROTECTION FROM FIRE

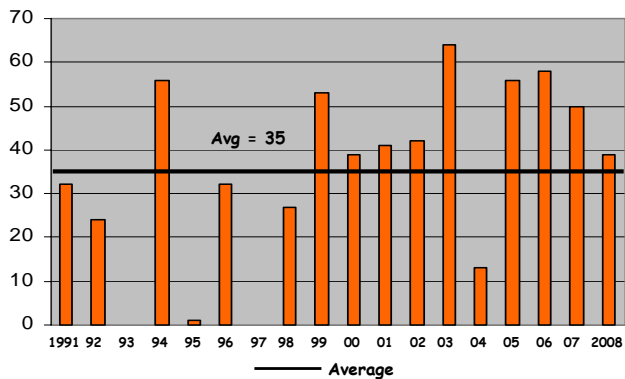
NEO - ERC (1988 - 2008)



- Good snow pack and early summer moisture.
- Dry fall extended the fire season.
- Seven new maximum Energy Release Component (ERC) values; all late season.

NEO District Days with ERC above 68 (1991-2008)

(ERC of 68 is the large fire threshold value in NEO)



Significant or Large Fires NEO District 2008

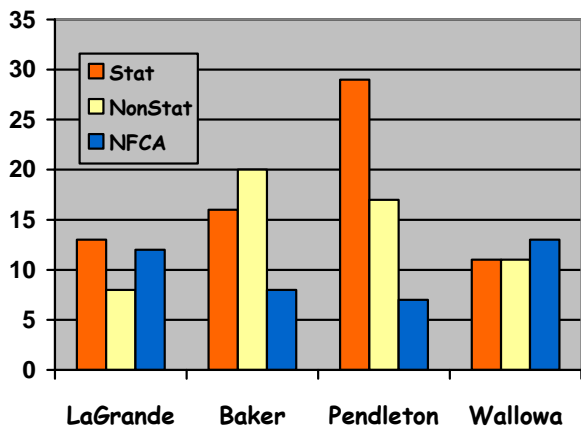
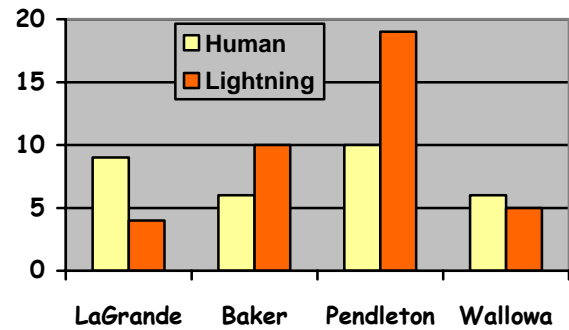
Fire Name	ODF Acres	Total Acres
Eagle Creek	223	375
Buckaroo	54	54
Camas Knob	123	123
Cable Creek	93	93
Pearson Creek	22	22

** All Pendleton Unit fires

Fire Season Highlights

- 88.4% of fires were 10 acres or less.
- A total of 38 lightning fires in 2008 was well below our 10 year average of 53.
- Of the 38 lightning fires, 22 were started from storms in Umatilla County spanning just two days.
- Four type 3 fires were managed with local resources by the Pendleton Unit.
- Below average number of Statistical Fires (69) and Protected Acres burned (683).
- NEO averages 90 Statistical Fires and 3,947 acres over the last ten years.

Fires by Cause



The Past 10 Years in NEO

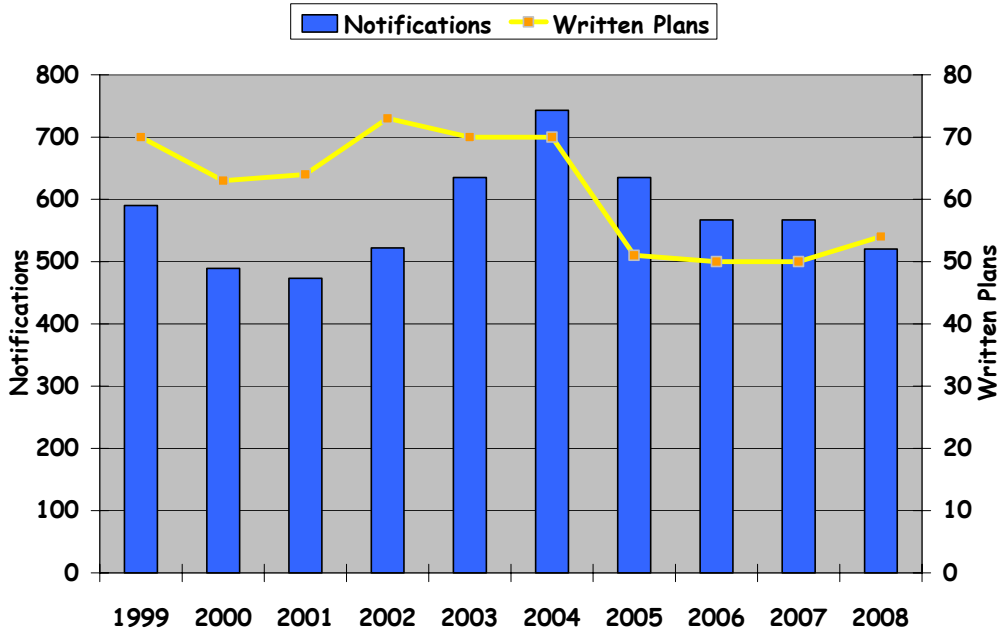
Year	# Of Fires	Acreege
2008	69	683
2007	113	10,127
2006	85	3,311
2005	69	2,057
2004	80	39
2003	91	1,613
2002	90	1,407
2001	110	15,320
2000	79	4,375
1999	114	542
Average	90	3,947

PRIVATE FOREST PROGRAMS

Forest Practices Act Administration

Below are the FPA administration numbers and 10 year comparison graphs.

FPA 10 Year Comparison



Oregon Tree Farmer of the Year

Ted and Mary Brown with Wisdom Creek Ranch were awarded Union County Tree Farmer of the Year and also Oregon Tree Farmer of the Year.

Eastern Oregon Area Operator of the Year

Ken Eberhard Logging in Union County was nominated for Eastern Oregon Operator of the year and received a merit award for his efforts.

Letters of Commendation

Jerod Schwabauer of Forest Capital Partners, Henderson Logging, and Paul Tate Logging were awarded Letters of Commendation for their outstanding Forest Practices achievements.

National Fire Plan Implementation

Following is a summary of the National Fire Plan Accomplishments in the NEO District for 2008.

ODF Unit	Acres Treated (2008)	Acres Treated (2002 To 2008)
Baker Sub-Unit (Baker County)	682	5,674
La Grande Unit (Union County)	500	2,386
Pendleton Unit (Umatilla County)	473	2,836
Wallowa Unit (Wallowa County)	104	1,368
TOTAL	1,759	12,264

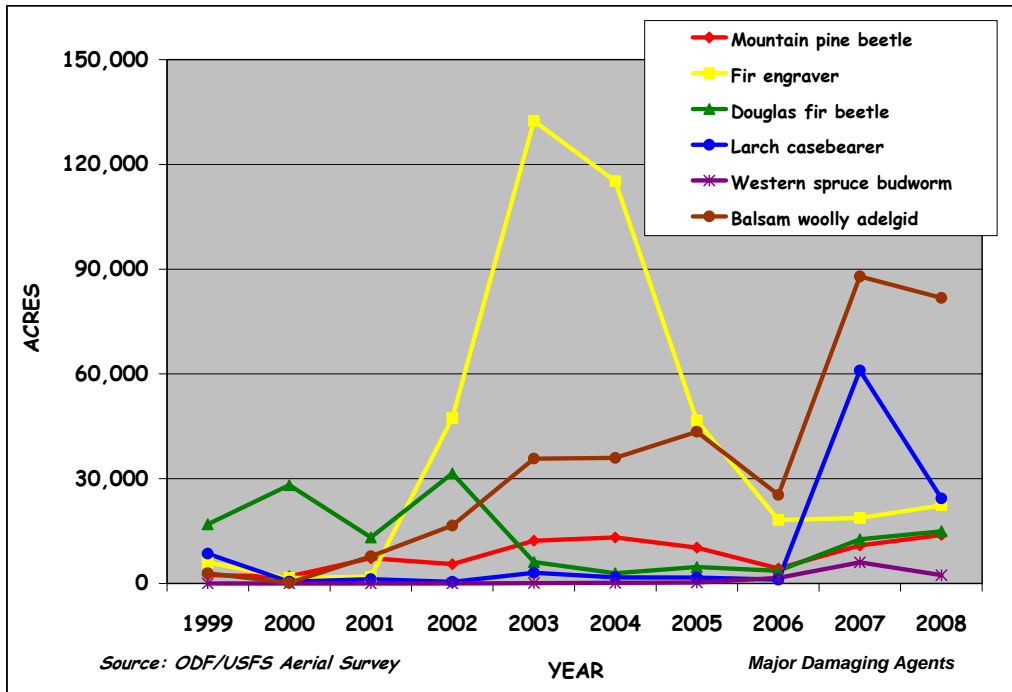
Forestry Assistance

During 2008, forestry assistance accomplishments included:

Non-commercial thinning	2,947 Acres
Fuel reduction/slash treatment	2,616 Acres
Tree planting	73 Acres
Commercial thin/salvage harvest	3,400 Acres
Stewardship Plans	14,351 Acres
Wildlife/fish habitat enhancement	45 Acres
Riparian enhancement	65,750 Feet
Cultural Resource Site Protection	80 Acres
Insect and disease tech advice	3,310 Acres
Marketing assistance	9,715 Acres

2008 Forest Health Condition Report

Ten-year damage trend of the major insect and pests affecting Northeast Oregon:



Cooperative Work Program

Cooperative work projects offer excellent opportunities to accomplish a variety of projects with cooperators, create training opportunities for employees, extend employment for NEO District employees and defray landowner protection program costs. In 2008, cooperative work partners included; ODOT, ODF&W, OSP, USFS, Private Lands Forest Network, Forest Capital Partners, Umatilla County and the City of Pendleton. In total, NEO District was reimbursed over \$370,000 in 2008 on cooperative work projects.

Personnel Changes

Julia Lauch, accepted the Assistant Unit Forester position in Pendleton. She came to NEO District from Western Lane District.

Daryl Cockram, long term Forest Officer in Baker City accepted a full time job with ODOT.

Northeast Oregon District Organization Chart

