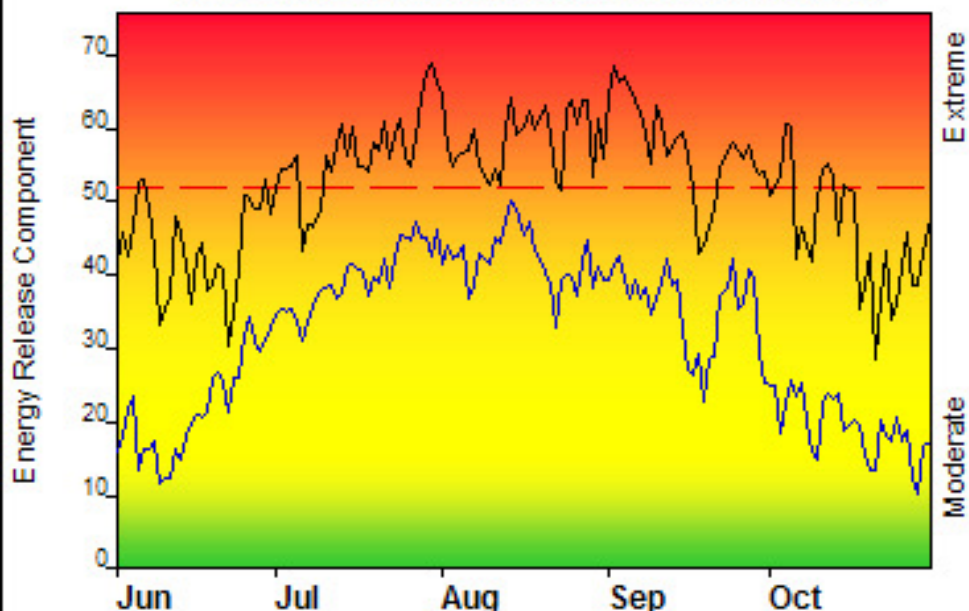


FIRE DANGER -- North Cascades ODF

Maximum, Average, and 89th Percentile, based on 11 years data



Fire Danger Area:

- ◆ North Cascades ODF
- ◆ Weather Zones 805,806
- ◆ Horse Ck, Eagle Ck. 2:1
- * Meets NWCG Wx Station Standards



Fire Danger Interpretation:



- EXTREME** -- Use extreme caution
- (Caution)** -- Watch for change
- Moderate** -- Lower Potential, but always be aware

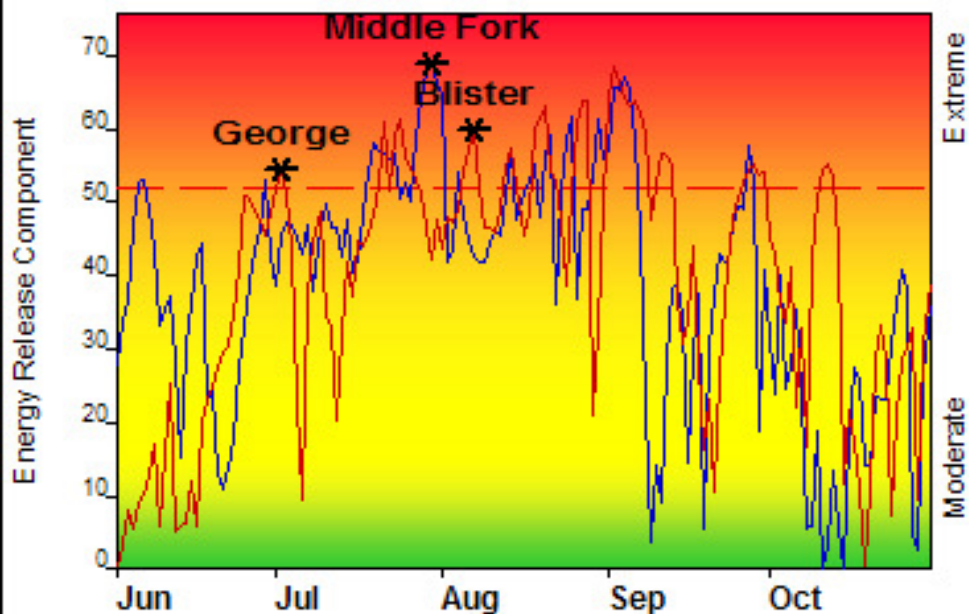
Maximum -- Highest Energy Release Component by day for 2000 - 2010

Average -- shows peak fire season over 11 years (1882 observations)

89th Percentile -- Only 11% of the 1882 days from 2000 - 2010 had an Energy Release Component above 52

Local Thresholds - Watch out: Combinations of any of these factors can greatly increase fire behavior:
 20' Wind Speed over 15 mph, RH less than 30%,
 Temperature over 85, Woody fuel Moisture less than 120

Years to Remember: 2003 2006



Fuel Model: K - Light Slash

Remember what Fire Danger tells you:

- ✓ Energy Release Component gives seasonal trends calculated from 2 pm temperature, humidity, daily temperature & rh ranges, and precip duration.
- ✓ Wind is NOT part of ERC calculation.
- ✓ Watch local conditions and variations across the landscape -- Fuel, Weather, Topography.
- ✓ Listen to weather forecasts -- especially WIND.

Past Experience:

* WATCH OUT SITUATION: Offshore Flow/East Wind events cause low humidity and warm temperatures with poor night-time recoveries; particularly during spring and late summer/fall.

*100 hour Fuel Moisture less than 13 is a Watch Out threshold.

*Heavy loading of 100 & 1000 hour fuels and slash make line construction slow and difficult and line holding challenging.

Responsible Agency: ODF North Cascade District
 FF+4.0.2 05/05/2011-14:59 (C:\FEWGW\May2011_NCAS_DB)

Design by NWCG Fire Danger Working Team