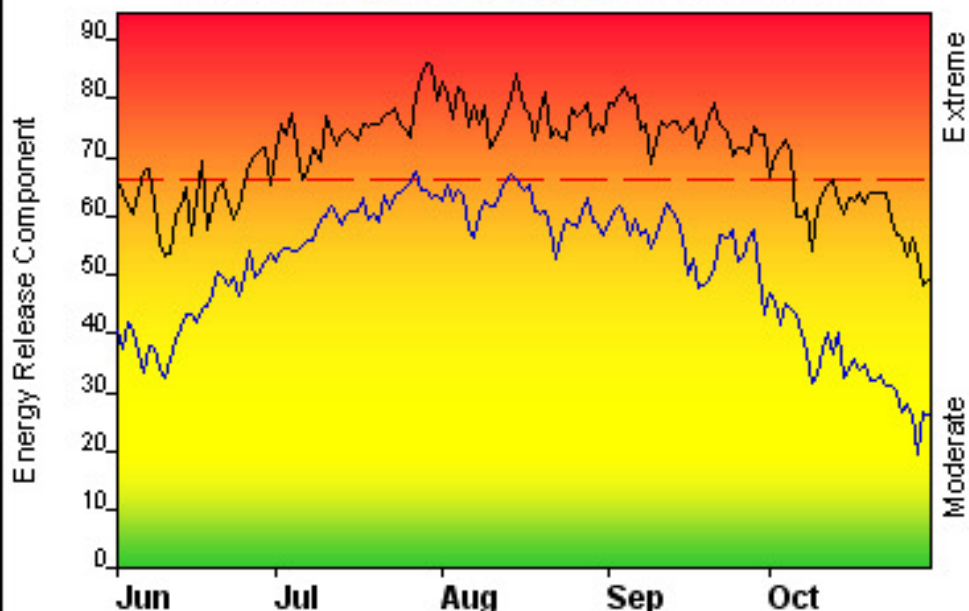


FIRE DANGER -- The Dalles Unit ODF

Maximum, Average, and 80th Percentile, based on 13 years data



Fire Danger Area:

- ◆ The Dalles Unit
- ◆ Wx zone 609
- ◆ Wasco, Middle Mt (2.5:1)
- * Meets NWCG Wx Station Standards

Fire Danger Interpretation:



- EXTREME** -- Use extreme caution
- (Caution)** -- Watch for change
- Moderate** -- Lower Potential, but always be aware

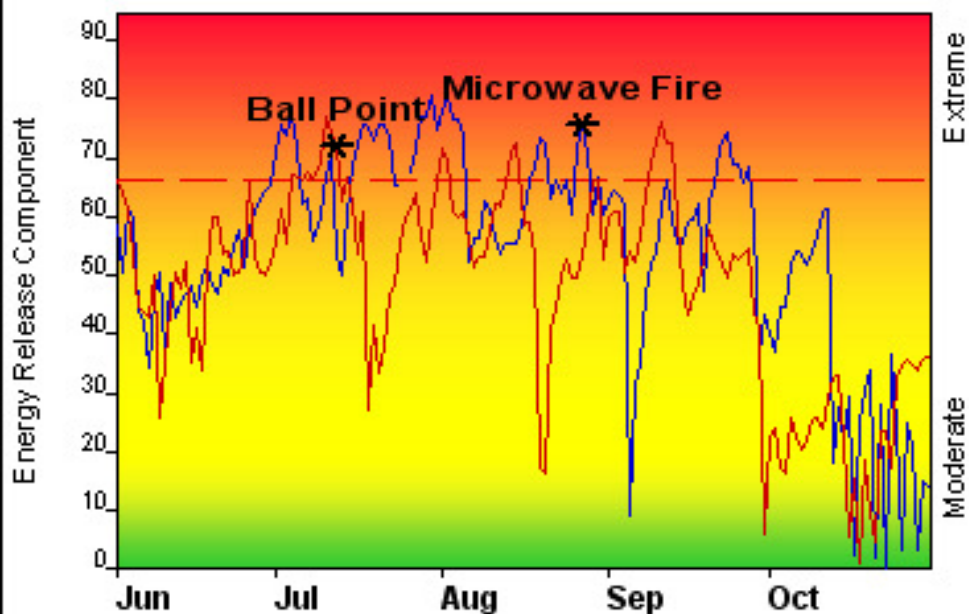
Maximum -- Highest Energy Release Component by day for 1998 - 2010

Average -- shows peak fire season over 13 years (1984 observations)

80th Percentile -- Only 20% of the 1984 days from 1998 - 2010 had an Energy Release Component above 66

Local Thresholds - Watch out: Combinations of any of these factors can greatly increase fire behavior:
20' Wind Speed over 15 mph, RH less than 25%, Temperature over 85, Woody fuel Moisture less than 85

Years to Remember: 2009 2007



Fuel Model: K - Light Slash

Remember what Fire Danger tells you:

- ✓ Energy Release Component gives seasonal trends calculated from 2 pm temperature, humidity, daily temperature & rh ranges, and precip duration.
- ✓ Wind is NOT part of ERC calculation.
- ✓ Watch local conditions and variations across the landscape -- Fuel, Weather, Topography.
- ✓ Listen to weather forecasts -- especially WIND.

Past Experience:

1000hr Fuel moisture less than 12% is an indicator of large fire growth.

Wind events in the Gorge are a major factor in large fire growth regardless of the ERC.

East Wind events are a special concern in the fall. Wind gusts of 30-80 mph are not uncommon.

Responsible Agency: ODF

FF+3.0.5 05/03/2011-14:24 (C:\Fire\NFDRS\ODF\The Dalles\20100502_Thedalles_cost.mdb)

Design by NWCG Fire Danger Working Team