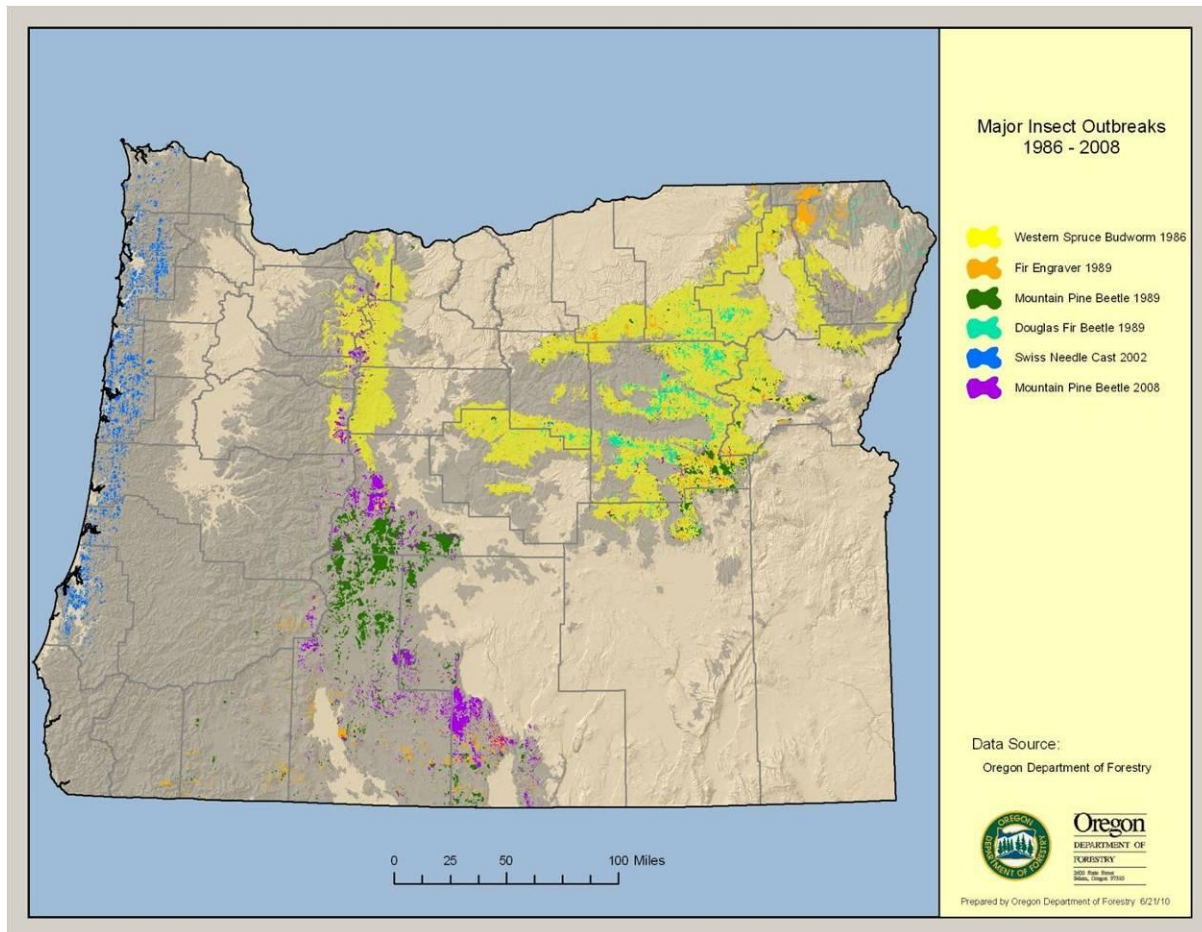


Figure 3: Estimated peak extents of major insect and disease outbreaks on Oregon forest lands as assessed by aerial surveys (1980-2009).^{1, 2}



¹ Large insect and disease outbreaks were recorded prior to these events, but aerial surveys were not done in a consistent manner nor were they conducted over forest lands Statewide.

² Overstory tree mortality is not generally observed from defoliating agents like Swiss needle cast or Western spruce budworm; however, these events can increase susceptibility to other agents.