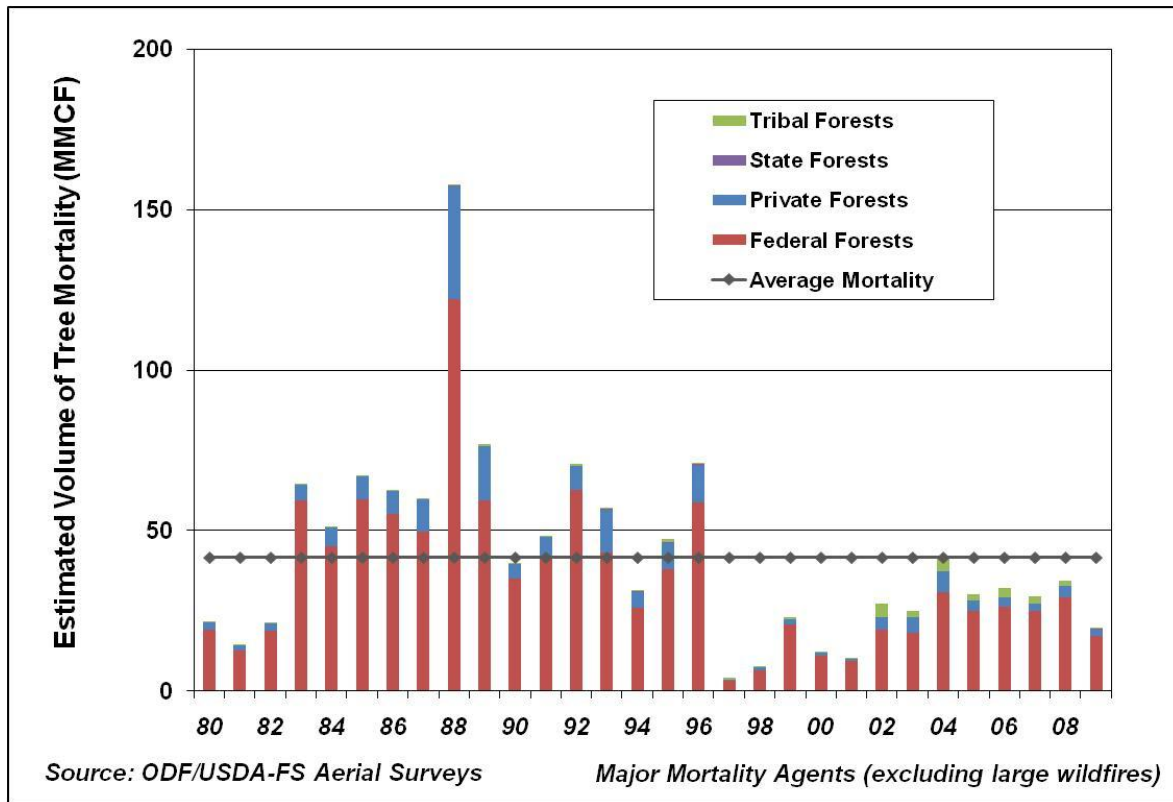


Figure 2: Estimated annual volume (MMCF) of tree mortality and the long-term average for Oregon forest lands as assessed by aerial surveys (1980-2009).^{1,2}



¹ Aerial detection surveys occurred prior to 1980, but were not done in a consistent manner nor were they conducted on forest lands Statewide.

² Does not include areas affected by defoliating agents that do not normally cause tree mortality or the majority of root diseases and mistletoes, which are not usually detected by aerial surveys. Does include small areas (<100 acres) affected by wildfire as these are not tracked by other efforts; however, these represent <1% of the overall tree mortality detected.