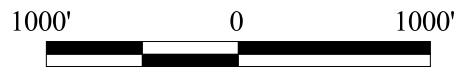


FY 2007  
 Doty's Derby  
 Sec. 22, T03N, R06W, W.M.  
 Tillamook County

Attachment C: Key Resources ( SAH )

Approximate Net Acreage:  
 Area 1: 77 Acres (MC)  
 TOTAL: 77 Acres

1 : 12000  
 1 Inch = 1000 Feet



- Timber Sale Boundary
- x— Surveyed Route of the Salem-Astoria Military Road
- - - - - Right-of-Way Boundary
- ▬▬▬ Highway
- ═══ Existing Roads
- - - - - Construction, Surfaced
- ▬▬▬ Improvement, Surfaced
- Perennial - Type F Streams
- - - - - Perennial - Type N Streams
- Salmon Anchor Habitat (SAH)
- ▭ ODF Ownership

Forest Grove District GIS  
 10/24/05  
 This product is for informational use and  
 may not be suitable for legal, engineering,  
 or surveying purposes.