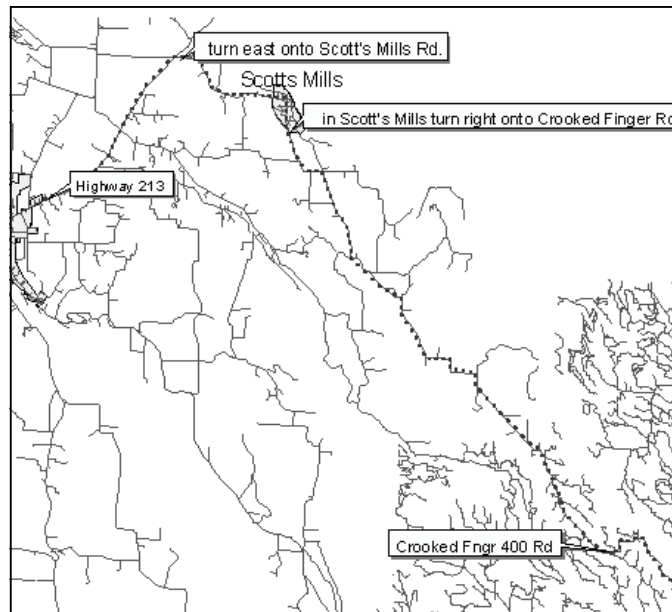


KNOW BEFORE YOU GO...

- Pack it In, Pack it Out: Where trash receptacles are not provided, carry out garbage and leave the area clean for the next visitor to enjoy.
- Camping and Campfires: Butte Creek Falls Trail is a day-use area only. Campsites are located 1/2 mile east of the trailhead. Campfires are allowed in designated metal fire rings only. Please do not leave campfires unattended and make sure fires are completely extinguished when you leave
- Use of Firearms: Discharging firearms is prohibited in designated recreation areas. It is illegal to discharge firearms in this area.
- Motorized Vehicles: All motorized vehicles are restricted to maintained gravel roads only. Off-road use is prohibited.
- Logging Operations: Please be cautious in areas where logging is taking place. Log trucks can not stop quickly, give them the right of way.
- Fire prevention: Be aware of fire regulations and restrictions during fire season.

Getting there:

- From the city of Silverton, take Hwy. 213 north to Scotts Mills Road and turn east.
- Proceed to the town of Scotts Mills, drive through town until you reach the Crooked Finger Road, then turn right.
- Continue 9.6 miles to the end of pavement, then 2 miles over gravel road to the CF 400 Rd., then turn left.
- Travel 2 miles down this route to the Butte Creek Falls Trailhead, with parking and a restroom.
- Or keep going 1/2 of a mile further to Butte Creek Campground.

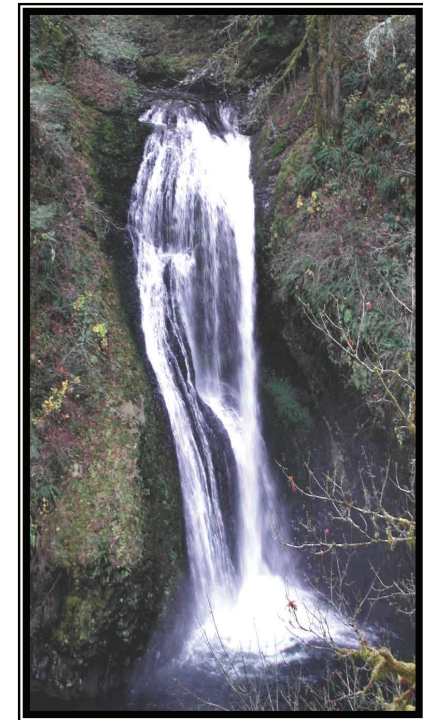


Santiam State Forest

22965 NORTH FORK RD SE
LYONS, OR 97358

Phone: 503-859-2151

Welcome to Butte Creek Falls & Butte Creek Campground Santiam State Forest



Trailhead:

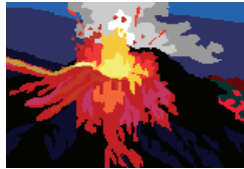
The Butte Creek Falls Trail is for hiking only. This short but moderately difficult trail winds its way through Douglas-fir, hemlock and many different types of vegetation. Don't grab the Devil's Club! It's thorns are sharp. And in the summer look for the orange fruit of the Salmon Berry, which some consider very tasty.

Campground:

A campground 1/2 mile upstream provides three campsites adjacent to the creek. This small campground is a popular destination and provides a restroom, trash service, picnic tables and fire rings. Each site is \$10 per night and \$2 per extra vehicle per night.

Geology:

15 million years ago, massive lava flows helped to create the two waterfalls that the trail leads to. The largest fall is 70 ft tall and crashes down into a deep, cold pool.



Management:

The Oregon Department of Forestry manages the Butte Creek Falls Trail. Our agency, with the assistance of local citizens, clubs and government officials has developed a new recreation management plan. This plan provides direction for implementing recreation in the forest. You will see many changes taking place at the Santiam State Forest. New facilities and trails will be constructed and old favorites will be improved to increase public safety and enjoyment.



Butte Creek Falls Trail

Total miles: 0.85 miles
Elevation gain/loss: 300 feet
Difficulty level: Moderate
Open to: Hiking only



Devil's Club

One of the most valuable medicinal plants for native peoples, Devil's Club is used to treat ailments such as arthritis and boils to tuberculosis and prevention of lice. The wood is excellent for making fishing lures.

