



Oregon

Theodore R. Kulongoski, Governor

Department of Transportation
Technical Services
Roadway Engineering Section
355 Capitol Street NE, Room 222
Salem, OR 97301-3871
Telephone 503-986-3714
FAX 503-986-3749

DATE: January 19, 2007


Addenda No. 01

TO: PLAN HOLDERS

PREPARED BY:


Calvin Larwood

APPROVED BY:

 P.E.

SUBJECT: HCRH Interpretive Sites & Signs
Historic Columbia River Highway
Multnomah, Hood River, and Wasco Counties
Grading, Drainage, Paving, Signing, and Roadside Development Project
(Bids to be opened and read February 1, 2007)

The following changes are made to the Project Special Provisions:

1. Subsection **00170.65(b) When Federal Funds Are Involved** - This subsection is replaced with the following subsection:

00170.65(b) When Federal Funds Are Involved - Replace the paragraph that begins "The Contractor shall pay..." with the following paragraph:

The Contractor shall pay the wage rate and fringe benefits listed in the publication "General Wage Determination Issued Under the Davis-Bacon and Related Acts from the U.S. Secretary of Labor", unless a higher wage rate and fringe benefits are required pursuant to Oregon Laws 2005, Chapter 360, (see Senate Bill 477) as provided in the Oregon Bureau of Labor and Industries (BOLI) publication titled "Prevailing Wage Rates for Public Works Contracts in Oregon subject to BOTH the State PWR and federal Davis-Bacon Act", which are incorporated herein by reference. See the Project Wage Rates page included with these Special Provisions for the web site address where these publications are available.

2. Subsection **00170.65(c) When No Federal Funds Are Involved** - This entire subsection is deleted.

3. Subsection **00225.11(a-2) Type** - The paragraph that begins with the words "Delete the bullet..." is deleted.
4. Subsection **00225.27 Flaggers** - The following paragraph is added after the bulleted item that begins "Highly visible...":

Replace the bullet that begins "For flaggers farthest from..." with the following bullet:

- Use a STOP/SLOW paddle for advance flagging. Cover the STOP face of the STOP/SLOW paddle during flagging operation.

5. Subsection **00225.44 Temporary Illumination** - This subsection is replaced with the following subsection:

00225.44 Temporary Illumination - Add the following sentence to the end of this subsection:

Install temporary illumination and Contractor equipment lighting, in a manner that does not shine the light directly into approaching traffic.

6. Subsection **00225.47 Flaggers** - This subsection is added after subsection **00255.44**:

00225.47 Flaggers - Replace the paragraph that begins "Locate flaggers far enough..." with the following paragraph:

Locate flaggers far enough in advance of the work area to permit adequate time for the motorist to respond to the flagger's instruction. All flaggers, including advance flaggers, shall use the STOP/SLOW paddle.

7. Subsection **00225.80(a) Quantity Limitations** - The first sentence of the paragraph that begins with the words " Replace this..." is replaced with the following:

Replace this subsection with the following subsection:

8. Section **02001 Concrete** - This Section is added after Section 01095. See attachment for full text.

9. Section **02010 Portland Cement** - This Section is added after Section 02001:

SECTION 02010 - PORTLAND CEMENT

Comply with Section 02010 of the Standard Specifications supplemented and/or modified as follows:

02010.20 Blended Hydraulic Cement - In the paragraph that begins with "Blended Hydraulic Cement...", replace the words "Type SM slag-modified portland cement" with the words "Type I(SM) slag-modified portland cement".

02010.20 Blended Hydraulic Cement - Replace the second bulleted item with the following bullet:

- The pozzolan constituent of the blended cement shall be a fly ash conforming to 02030.10 or GGBFS conforming to 02030.40.

10. Section **02030 Modifiers** - This Section is added after Section 02010:

SECTION 02030 - MODIFIERS

Comply with Section 02030 of the Standard Specifications supplemented and/or modified as follows:

02030.00 Scope - Replace this subsection with the following:

02030.00 Scope - This Section includes the requirements and tolerances for fly ash, silica fume, latex and ground granulated blast furnace slag (GGBFS) used in portland cement concrete.

The following changes are made to the Project Plans:

1. Plan sheets 1 and 2B-7 are replaced with revised plan sheets 1 and 2B-7.

These changes will be included in the Contract for this Project. It is understood that your Bid will be submitted accordingly.

Make copies of the new Bid Sheets to replace the Special Provisions Bid Schedule Sheets.

CRL:CRL

Attachments: Revised Plan Sheets
New Special Provisions Section 02001

SECTION 02001 - CONCRETE

Comply with Section 02001 of the Standard Specifications supplemented and/or modified as follows:

02001.01 Abbreviations and Definitions - Add the following abbreviations and definition:

cm - Cementitious Materials (portland cement, fly ash, silica fume, ground granulated blast furnace slag)

GGBFS - Ground Granulated Blast Furnace Slag

High Performance Concrete (HPC) - Structural concrete, with enhanced durability and strength characteristics, for use in structures where improved durability and performance is required.

02001.10 General - Replace the "Modifiers" reference with the following:

Modifiers (fly ash, silica fume, latex, GGBFS).....02030

02001.30(a) Structural Concrete - Add the following after the parenthesis:

"or when high performance concrete (HPC) is specified"

02001.30(d) Classes - Add the following paragraph before Table 02001-1:

HPC is required when the letters "HPC" precede the *f*'c. For example, Class HPC30 - 19.0 (Class HPC4400 - 3/4) indicates high performance concrete with an *f*'c of 30 MPa (4400 psi) with a nominal maximum size aggregate of 19.0 mm (3/4 inch).

Add the following to Table 02001-1:

METRIC

Type of Concrete	Class	Minimum Cementitious Content	Maximum Water Cementitious Ratio	Trial Batch for New Designs	Test Records for Existing Designs	Aggregate Source Quality Tests	Aggregate Quality Control Testing	Certified Technicians Required
Structural Concrete	HPC25 MPa	340 kg ²	0.40 ²	Required	Required	Required	Required	QCT CCT CAgT
	HPC30 MPa	370 kg ²	0.40 ²					
	HPC35 MPa and above	390 kg ²	0.40 ²					

ENGLISH

Type of Concrete	Class	Minimum Cementitious Content	Maximum Water Cementitious Ratio	Trial Batch for New Designs	Test Records for Existing Designs	Aggregate Source Quality Tests	Aggregate Quality Control Testing	Certified Technicians Required
Structural Concrete	HPC3600	570 lb ²	0.40 ²	Required	Required	Required	Required	QCT CCT CAgT
	HPC4350	630 lb ²	0.40 ²					
	HPC5000 and above	660 lb ²	0.40 ²					

² All cementitious material (portland cement, fly ash, and silica fume). Fly ash shall be 30% by mass (weight) of the total cementitious materials. Silica fume shall be 4% by mass (weight) of the total cementitious materials.

02001.41(b) Fly Ash - Replace this subsection with the following:

(b) Fly Ash - Except for HPC, fly ash may be used in concrete to replace a portion of the cement and as an additive to increase the total amount of cementitious materials. As a replacement for cement, fly ash may comprise up to 20% of the minimum specified cement content.

Additionally, the maximum allowable percent of fly ash shall be 35% of the total cementitious materials, provided that the mix design contains at least 80% of the minimum specified cement content as shown in Table 02001-1.

02001.41(d) Chemical Admixtures - Add the following paragraph after the first paragraph:

Use high range water reducing admixtures (HRWRA) in all HPC. Add other water reducing admixtures (WRA) as needed.

02001.41(e) Coarse Aggregates - Add the following bullet to the end the bulleted list:

- Proportion all HPC to include a minimum coarse aggregate solid volume of 0.40 m³/m³ (cubic yard per cubic yard) of concrete.

02001.42 New Mix Designs - In the sentence that begins "Structural concrete on projects...", add the following after the parentheses:

"and all structural concrete, Class HPC"

02001.42(a) Trial Batch Method - Replace this subsection with the following:

(a) Trial Batch Method - Make at least one trial batch for each class of mixture, except for CGC. Prepare and test the trial batch using the same ingredients and proportions that will be used on the Project. In order to ensure proper workability on site, simulate the haul time and

mixing conditions that are forecast to occur on the Project. Cast, cure and test three or more cylinders for compressive strength. Notify the Engineer at least 48 hours in advance of when trial batches will be performed. The Engineer may witness the preparation and testing.

02001.42(b) Plastic Concrete - Replace all references of "water-cement ratio" with "water-cementitious ratio".

02001.45(h-1) Tests on Plastic Concrete - Replace "cement content and water-cement ratio" to "cementitious content and "water-cementitious ratio".

Add the following subsections:

02001.45(i) Latex - Identify the:

- Manufacturer or Brand
- Type

02001.45(j) Silica Fume - Identify the:

- Manufacturer or Brand
- Trade name
- Type - slurry or dry densified

02001.50 Concrete Mix Tolerances and Limits General - Modify Table 02001-3 as follows:

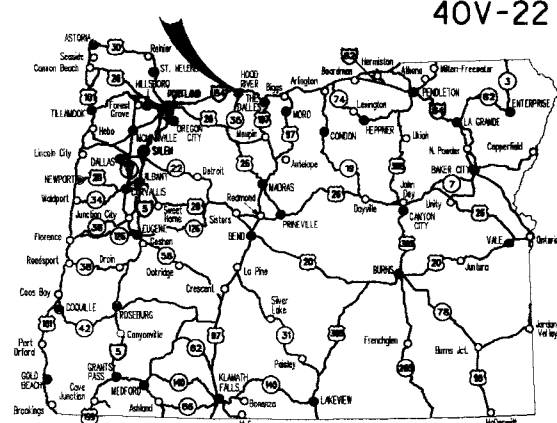
Under the Limits column, replace "75 mm - 200 mm (3" - 4")" with "75 mm - 200 mm (3" - 8)".

In the last row of the table, replace "Maximum Water-Cement Ration express as $w/(c+p)$ " with "Maximum water-cementitious ratio express as w/cm ", and replace "Water-cement ratio may not exceed the values in Table 02001-1" with "Water-cementitious ratio may not exceed the values in Table 02001-1".

STATE OF OREGON
DEPARTMENT OF TRANSPORTATION

PLANS FOR PROPOSED PROJECT

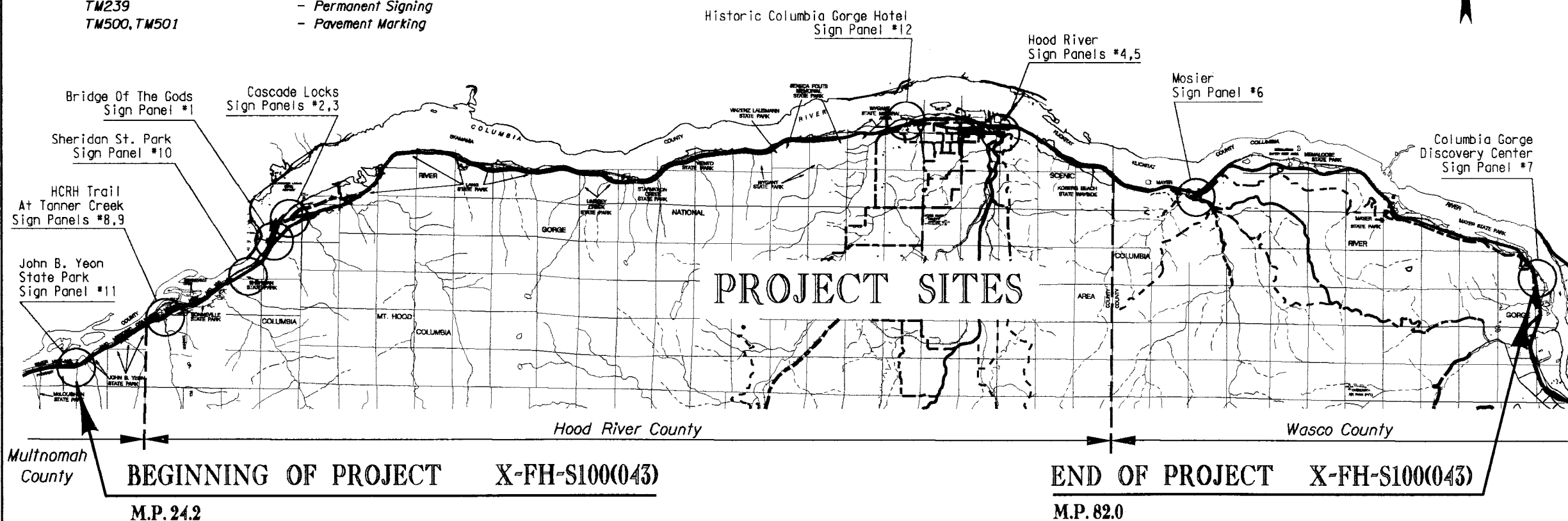
GRADING, DRAINAGE, PAVING, SIGNING, AND ROADSIDE DEVELOPMENT
HCRH INTERPRETIVE SITES AND SIGNS
HISTORIC COLUMBIA RIVER HIGHWAY
MULTNOMAH, HOOD RIVER AND WASCO COUNTIES
FEBRUARY 2007



Overall Length Of Project - 93.0 Km (57.8 mi)

INDEX OF SHEETS	
SHEET NO.	DESCRIPTION
1	Title Sheet
2B Thru 2B-6 Incl.	Details
2B-7 Thru 2B-24 Incl.	Interpretive Sign Panel Details
2B-25	Color Palette Exhibit For Signs
3	Cascade Locks General Construction
3A	Cascade Locks General Construction Plan And Profile
4	Cascade Locks Grading, Drainage, & Utilities Plan
5	Cascade Locks Roadside Development Plan
6	Hood River General Construction
7	Hood River Grading, Drainage, & Utilities Plan
8	Hood River Roadside Development Plan
9	Mosier General Construction
10	Non-Urban Interpretive Panel Locations
11	Non-Urban Interpretive Panel Locations

- Standard Dwg. Nos.**
- BR720 - Gravity Retaining Wall
 - RD105 - Disabled Person Parking
 - RD300, RD350, RD370 - Drainage
 - RD700, RD715, RD720, RD725 - Curbs, Islands, Sidewalks, And Dwys.
 - RD820 - Fence Gates
 - RD900, RD905, RD910, RD911 - Traffic Control
 - RD1010, RD1040 - Erosion Control
 - TM100, TM105 - Temporary Signing
 - TM239 - Permanent Signing
 - TM500, TM501 - Pavement Marking



PLANS PREPARED FOR
OREGON DEPARTMENT OF TRANSPORTATION
BY:

9755 SW BARNES RD.
SUITE 300
PORTLAND, OREGON 97225
+503-626-0455
+503-526-8775 FAX
WHPACIFIC.COM

PLANNERS ENGINEERS SURVEYORS LANDSCAPE ARCHITECTS

- OREGON TRANSPORTATION COMMISSION
- Stuart Foster CHAIRMAN
 - Gail L. Achterman COMMISSIONER
 - Michael Nelson COMMISSIONER
 - Randall Papé COMMISSIONER
 - John Russell COMMISSIONER
- DIRECTOR OF TRANSPORTATION



OREGON DEPARTMENT OF TRANSPORTATION
CONCURRENCE

TECHNICAL SERVICES MANAGING ENGINEER _____ DATE _____

ODOT/HCRH
INTERPRETIVE SITES AND SIGNS
HISTORIC COLUMBIA RIVER HIGHWAY
MULTNOMAH, HOOD RIVER & WASCO COUNTIES

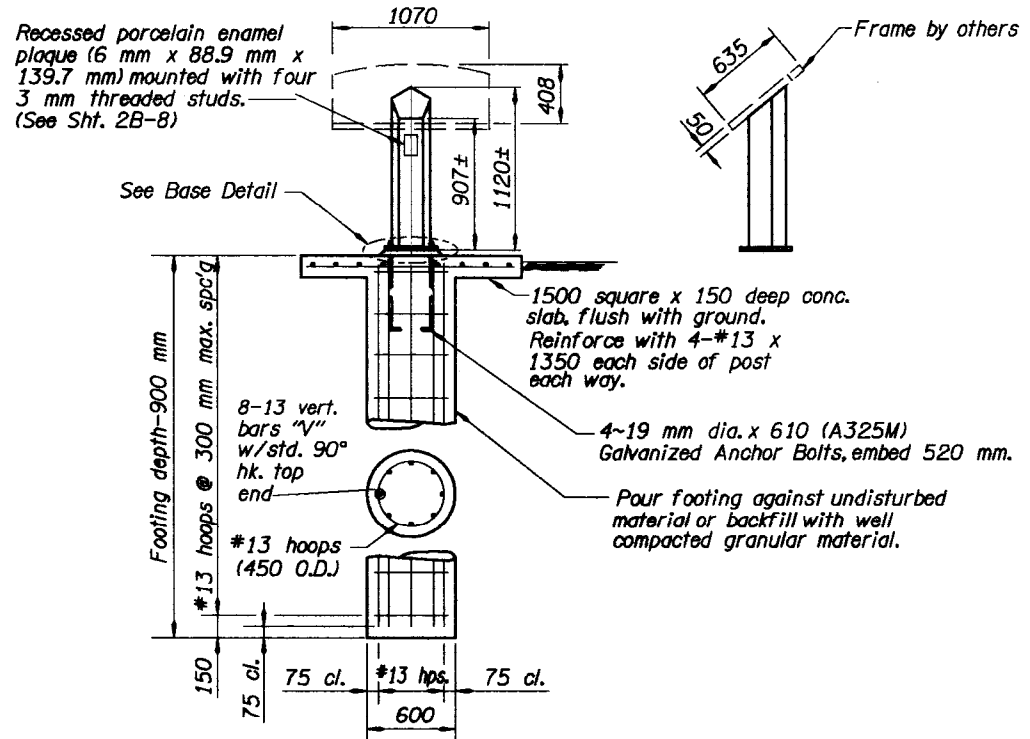
FEDERAL HIGHWAY ADMINISTRATION	PROJECT NUMBER	SHEET NO.
REGION 10	OREGON DIVISION	1

ATTENTION :
Oregon Law Requires You To Follow Rules Adopted By The Oregon Utility Notification Center. Those Rules Are Set Forth In OAR 952-001-0010 Through OAR 952-001-0090. You May Obtain Copies Of The Rules From The Center, Or Answers To Questions About The Rules By Calling (503) 232-1987.

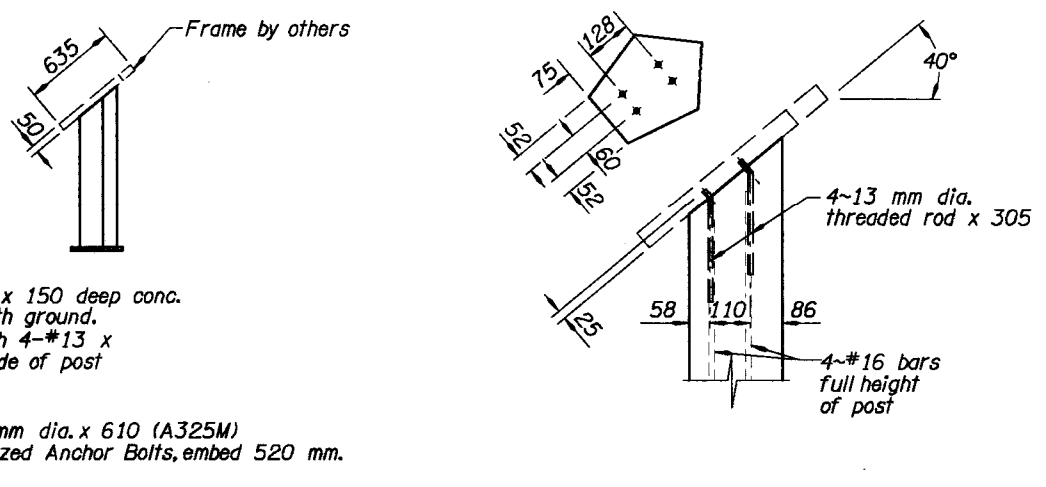


01/19/07 - Added Std. Drg. No.

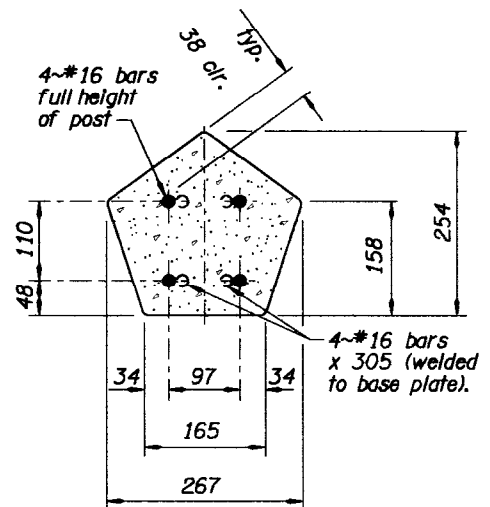
1/24/2007



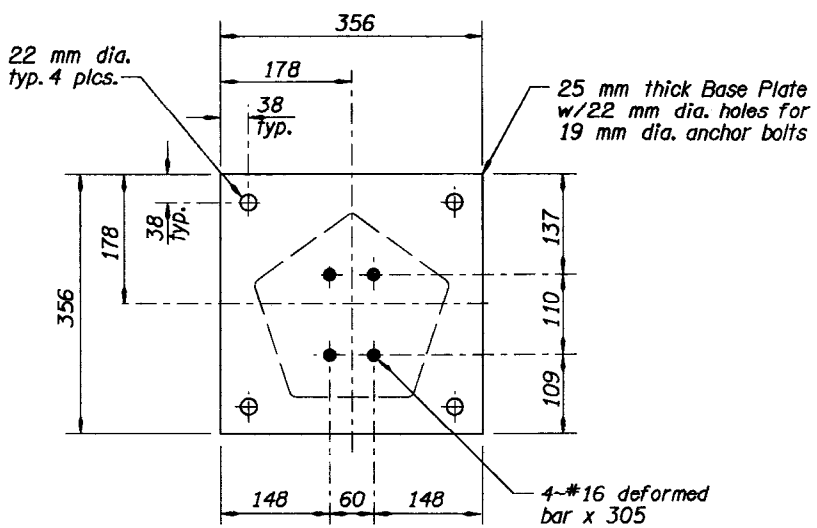
SIGN POST
Scale: 1:25



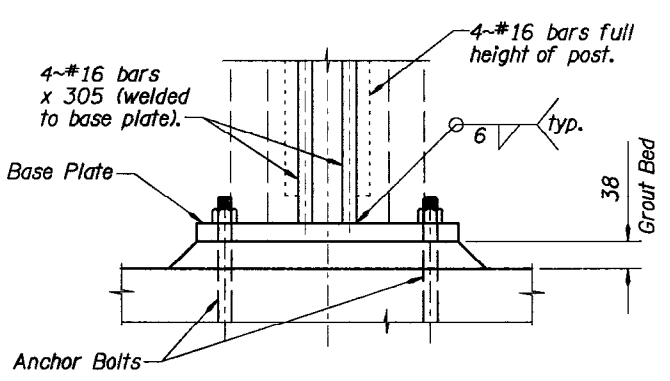
FRAME ATTACHMENT
Scale: 1:10



POST DETAIL
Scale: 1:5



BASE PLATE
Scale: 1:5



BASE DETAIL
Scale: 1:5

GENERAL NOTES:

All material and workmanship shall conform to the "Oregon Standard Specifications for Construction 2002" of the Oregon State Department of Transportation, Highway Division. Sign supports are designed in accordance with the AASHTO Standard Specifications for Structural Supports for Highway Signs, Luminaires, and Traffic Signals.

Footing concrete shall be minor structure concrete (f'c = 25 MPa) Class 25 - 37.5 or 19.

Precast concrete signpost shall be Class 35 - 19.

All reinforcing steel shall conform to ASTM Specification A615M, Grade 420, or ASTM A706M.

Structural steel shall conform to AASHTO Specification M223M (ASTM A572M) Grade 345 unless shown otherwise.

Shims shall be fabricated from brass shim stock conforming to ASTM B36M.

All bolts shall be high strength bolts conforming to ASTM Specification A325M. Nuts for high strength bolts shall be well lubricated heavy hexagon nuts conforming to ASTM Specification A563M, Class 10S. Hardened steel washers shall conform to ASTM Specification F436M.

Steel sheet for keepers shall conform to ASTM Specification A526M.

Base plate holes shall be sub-drilled and reamed to size. Base plate slots shall be saw cut or machine guided flame cut.

Keeper sheet metal shall be galvanized in accordance with ASTM A653M, Coating G165. All other steel including fasteners shall be hot-dip galvanized after fabrication. Remove galvanizing runs and beads on all slip surfaces. Nuts for high strength bolts may be retapped after galvanizing.

- BASE PLATE BOLTING PROCEDURE:**
1. Assemble post to footing slab as shown in Base Detail.
 2. Shim and grout as required to plumb post.
 3. Tighten bolts in a systematic order.
 4. Burr threads at junction with nut using a center punch.

NOTE: (For bolts and/or anchor rods with decimal designations) All bolts and/or anchor rods with decimal designations (i.e. 15.9 dia.) shall be considered to be equivalent Customary U.S. Units (i.e. 5/8" dia.) and shall be high strength bolts or anchor rods conforming to ASTM Specification A325 or A449 or low strength bolts or anchor rods conforming to ASTM Specification A307. Nuts for bolts and/or anchor rods shall be lubricated heavy hex nuts conforming to ASTM Specification A563, grade DH. Compressible direct tension indicator washers for these bolts and/or anchor rods shall conform to ASTM Specification F959. Hardened steel washers shall conform to ASTM Specification F436. All torques for high strength bolts and/or anchor rods with decimal designations shall be considered to be equivalent Customary U.S. Units.

01/19/07 - Changed General Note Text

All Dimensions Are In Millimeters (mm) Unless Otherwise Noted.

<p>9755 SW Barnes Rd. Suite 300 Portland, Oregon 97225 (503)626-0455 (503)526-0775 Fax whpacific.com</p>		<p>OREGON DEPARTMENT OF TRANSPORTATION ROADWAY ENGINEERING SECTION</p>	
		<p>ODOT/HCRH INTERPRETIVE SITES AND SIGNS COLUMBIA RIVER HIGHWAY MULTNOMAH, HOOD RIVER & WASCO COUNTIES</p> <p>Reviewed By - Ken S. Rehms Designed By - Elizabeth L. Betts Drafted By - Elizabeth L. Betts</p>	
<p>SIGNPOST DETAILS</p>		<p>SHEET NO. 2B-7</p>	