



Oregon

Theodore R. Kulongoski, Governor

Department of Transportation

Technical Services

Roadway Engineering Section

355 Capitol Street NE, Room 222

Salem, OR 97301-3871

DATE: May 18, 2009

Addenda No. 1

TO: PLAN HOLDERS

PREPARED BY: Christopher N. Suite

APPROVED BY: Edward G. ... P.E.

SUBJECT: I-5: Tongue & Groove Barrier Replacement Section
Pacific Highway
Marion County
Barrier Project
(Bids to be opened and read May 28, 2009)

The following changes are made to the Project Bid Booklet:

1. The following changes are made to the Project Bid Items:

a. Quantity changes:

<u>Number</u>	<u>Item</u>	<u>Quantity</u>	
		<u>Original</u>	<u>New</u>
0210	GUARDRAIL, TYPE 2A	75.00	263.00
0260	CONCRETE BARRIER	5,335.00	5,248.00
0270	CONCRETE BARRIER, TALL	37,410.00	37,323.00
0280	MOVE EXISTING CONCRETE BARRIER	175.00	164.00
0340	CL-6 CHAIN-LINK FENCE	40.00	120.00
0350	CL-4 CHAIN-LINK FENCE WITH PLASTIC PICKETS	16,335.00	16,296.00

b. Name changes:

<u>Number</u>	<u>Item</u>
0200	PG 64-22 ASPHALT IN HMAC

Make a copy of and use the new attached Bid Sheets. A Bid **not** including these new Bid Sheets **will be rejected as non-responsive.**

The following changes are made to the Project Special Provisions:

1. Subsection **00195.10(d) Asphalt Cement Price Adjustment** - The **Pay Item** is replaced with the following:

PG 64-22 Asphalt in Level 3, ¾ Inch Open HMAC
2. Subsection **00745.40 Season and Temperature Limitations** - The following paragraph is added after the paragraph that begins "In the table...":

In the table, for From To Inclusive of Open Graded Mixes Less than 2 inches or 2 inches and Greater, replace 3/15 9/30 with All Year under the Level 3 and Level 4 column.
3. **Section 00810 – Metal Guardrail** - This Section is replaced with the following Section:

SECTION 00810 - METAL GUARDRAIL

Comply with Section 00810 of the Standard Specifications modified as follows:

00810.90 Payment – Add the following paragraph to the end of this subsection:

No separate or additional payment shall be made for drilling through pavement for guardrail post installation as this work will be considered incidental to the applicable Pay Item.

4. **Section 01050 – Fences** - This Section is replaced with the following Section:

SECTION 01050 - FENCES

Comply with Section 01050 of the Standard Specifications modified as follows:

01050.90 Payment – Add the following paragraph to the end of this subsection:

No separate or additional payment shall be made for providing and installing anchor plates and resin bonded anchor bolts as this work will be considered incidental to the applicable Pay Item.

The following changes are made to the Project Plans:

1. Plan sheets 2, 2A, 3, 4, 5, 7, 8, 9A, and 10A are replaced with revised plan sheets 2, 2A, 3, 4, 5, 7, 8, 9A, and 10A.

I-5: Tongue & Groove Barrier Replacement Section
Pacific Highway
Marion County
Barrier Project
(Bids to be opened and read May 28, 2009)

Addenda No. 1

These changes will be included in the Contract for this Project. It is understood that your Bid will be submitted accordingly.

Make copies of the new Bid Sheets to replace the Special Provisions Bid Schedule Sheets.

BLS:bls

Attachments: New Bid Sheets
Revised Plan Sheets

BID SCHEDULE

CONTRACT ID: 14037

PROJECT: I-5: TONGUE & GROOVE BARRIER
REPLACEMENT

PROJECT KEY: 16350

ADDENDUM NUMBER: 1

ITEM NO	ITEM DESCRIPTION	QUANTITY AND UNITS	UNIT PRICE (IN FIGURES)	BID AMOUNT (IN FIGURES)
SECTION 0001 TEMPORARY FEATURES AND APPURTENANCES				
0010	0210-0100000A MOBILIZATION	LS ALL		
0020	0225-0100000A TEMPORARY PROTECTION AND DIRECTION OF TRAFFIC	LS ALL		
0030	0225-0102000J TEMPORARY SIGNS	SQFT 1,050.00		
0040	0225-0105000E TEMPORARY BARRICADES, TYPE III	EACH 12.00		
0050	0225-0138000E TEMPORARY IMPACT ATTENUATOR, TRUCK MOUNTED	EACH 2.00		
0060	0225-0141400E REPAIR TEMPORARY IMPACT ATTENUATOR, TRUCK MOUNTED	EACH 6.00		
0070	0225-0145000E TEMPORARY PLASTIC DRUMS	EACH 150.00		
0080	0225-0162000E SEQUENTIAL ARROW SIGNS	EACH 2.00		
0090	0225-0164000E PORTABLE CHANGEABLE MESSAGE SIGNS	EACH 2.00		
0100	0225-0168000T FLAGGERS	HOUR 600.00		
0110	0225-0168100E FLAGGER STATION LIGHTING	EACH 4.00		
0120	0280-0100000A EROSION CONTROL	LS ALL		

BID SCHEDULE

CONTRACT ID: 14037

PROJECT: I-5: TONGUE & GROOVE BARRIER
REPLACEMENT

PROJECT KEY: 16350

ADDENDUM NUMBER: 1

ITEM NO	ITEM DESCRIPTION	QUANTITY AND UNITS	UNIT PRICE (IN FIGURES)	BID AMOUNT (IN FIGURES)
0130	0290-0100000A POLLUTION CONTROL PLAN	LS ALL		

SECTION 0002 ROADWORK

0140	0305-0100000A CONSTRUCTION SURVEY WORK	LS ALL		
0150	0310-0106000A REMOVAL OF STRUCTURES AND OBSTRUCTIONS	LS ALL		
0160	0330-0105000K GENERAL EXCAVATION	CUYD 110.00		

SECTION 0003 BASES

0170	0620-0104000J COLD PLANE PAVEMENT REMOVAL, 0 - 2 INCHES DEEP	SQYD 70.00		
0180	0640-0101000M AGGREGATE SHOULDERS	TON 3,500.00		

SECTION 0004 WEARING SURFACES

0190	0745-0311000M LEVEL 3, 3/4 INCH OPEN HMAC	TON 3,600.00		
0200	0745-0620000M PG 64-22 ASPHALT IN HMAC	TON 220.00		

SECTION 0005 PERMANENT TRAFFIC SAFETY AND GUIDANCE DEVICES

0210	0810-0104000F GUARDRAIL, TYPE 2A	FOOT 263.00		
------	-------------------------------------	-------------	--	--

BID SCHEDULE

CONTRACT ID: 14037

PROJECT: I-5: TONGUE & GROOVE BARRIER
REPLACEMENT

PROJECT KEY: 16350

ADDENDUM NUMBER: 1

ITEM NO	ITEM DESCRIPTION	QUANTITY AND UNITS	UNIT PRICE (IN FIGURES)	BID AMOUNT (IN FIGURES)
0220	0810-0107000F GUARDRAIL, TYPE 3	213.00 FOOT		
0230	0810-0126000E GUARDRAIL TRANSITION	17.00 EACH		
0240	0810-0129000E GUARDRAIL TERMINALS, NON-FLARED	18.00 EACH		
0250	0812-0101000F ADJUSTING GUARDRAIL	275.00 FOOT		
0260	0820-0100000F CONCRETE BARRIER	5,248.00 FOOT		
0270	0820-0127000F CONCRETE BARRIER, TALL	37,323.00 FOOT		
0280	0820-9Z90000F MOVE EXISTING CONCRETE BARRIER	164.00 FOOT		
0290	0840-0105000E DELINEATORS, TYPE 5	872.00 EACH		

SECTION 0006 PERMANENT TRAFFIC CONTROL AND ILLUMINATION SYSTEMS

0300	0905-0100000A REMOVE EXISTING SIGNS	ALL LS		
0310	0905-0101000A REMOVE AND REINSTALL EXISTING SIGNS	ALL LS		
0320	0910-0100000K WOOD SIGN POSTS	60.00 FBM		
0330	0940-0113000J TYPE "G" SIGNS IN PLACE	4.00 SQFT		

SECTION 0007 RIGHT-OF-WAY DEVELOPMENT AND CONTROL

BID SCHEDULE

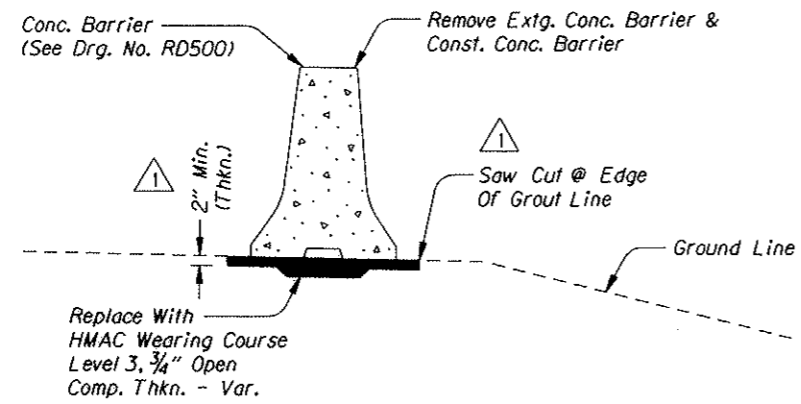
CONTRACT ID: 14037

PROJECT: I-5: TONGUE & GROOVE BARRIER
REPLACEMENT

PROJECT KEY: 16350

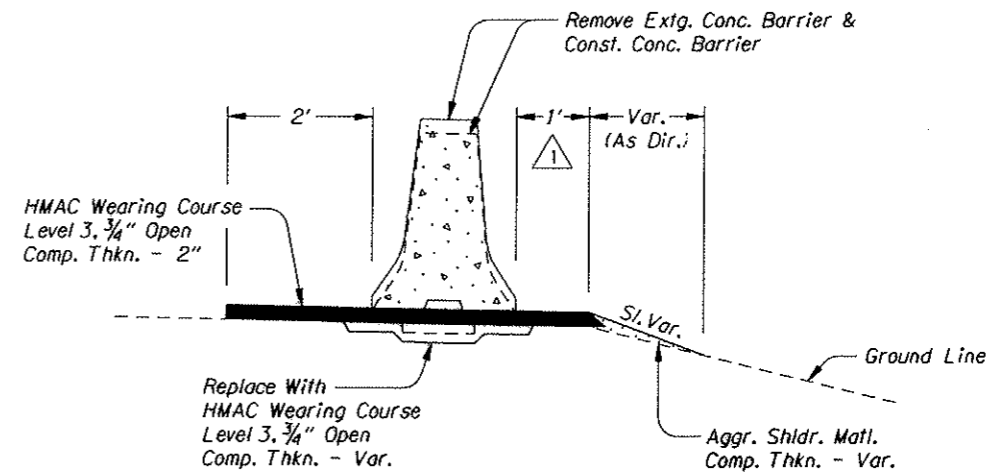
ADDENDUM NUMBER: 1

ITEM NO	ITEM DESCRIPTION	QUANTITY AND UNITS	UNIT PRICE (IN FIGURES)	BID AMOUNT (IN FIGURES)
0340	1050-0135000F CL-6 CHAIN-LINK FENCE	120.00 FOOT		
0350	1050-0155000F CL-4 CHAIN-LINK FENCE WITH PLASTIC PICKETS	16,296.00 FOOT		
TOTAL BID				



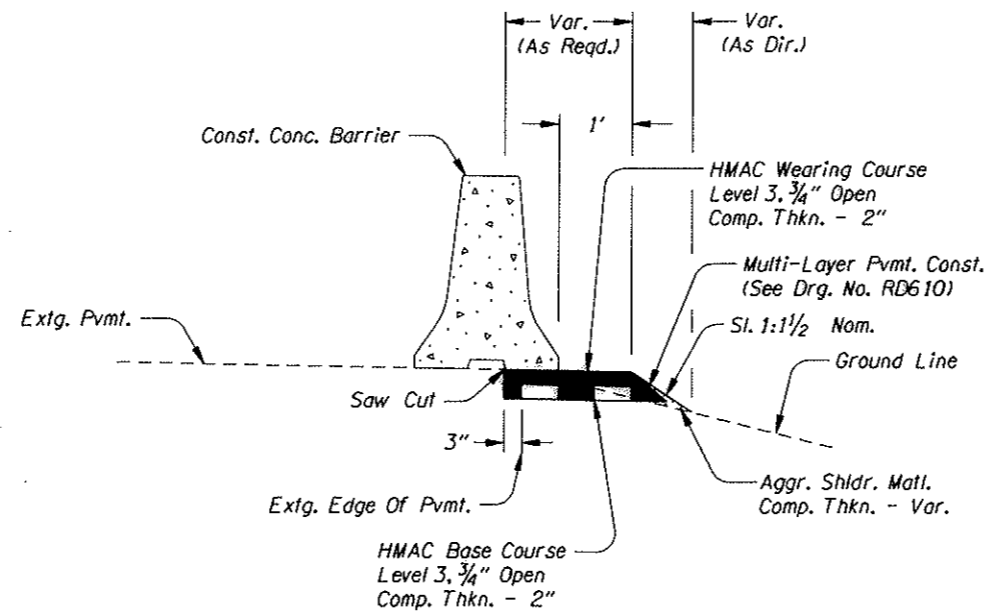
(Patching Of Extg. Keyway)

BARRIER PAVING, METHOD "A"



(Barrier Pad For Future Overlay)

BARRIER PAVING, METHOD "B"



(New Barrier Pad)

BARRIER PAVING, METHOD "C"

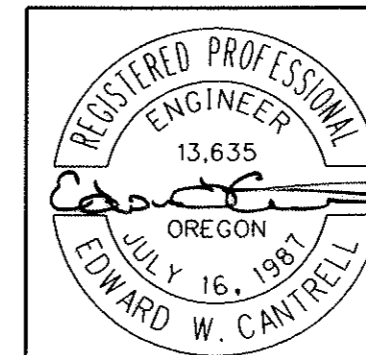
△ Revised 5-21-2009, Added Notes

OREGON DEPARTMENT OF TRANSPORTATION

REGION 2 TECH CENTER

**1-5 TONGUE & GROOVE
BARRIER REPLACEMENT SEC.
PACIFIC HIGHWAY
MARION COUNTY**

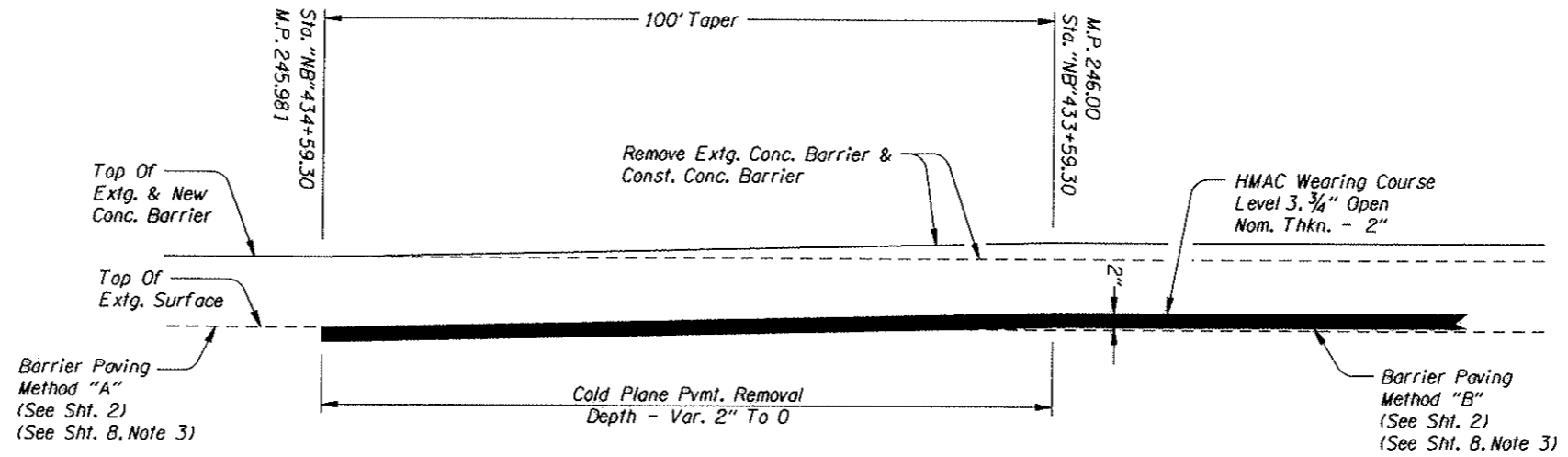
Design Team Leader - Carol Cartwright
Designed By - Don Clark
Drafted By - Larry D. Garrison



RENEWS: 12-31-2009

DETAILS

SHEET NO.
2



△ TAPER AT INLAY TO OVERLAY TRANSITION

△ Revised 5-21-2009, Changed Detail

OREGON DEPARTMENT OF TRANSPORTATION

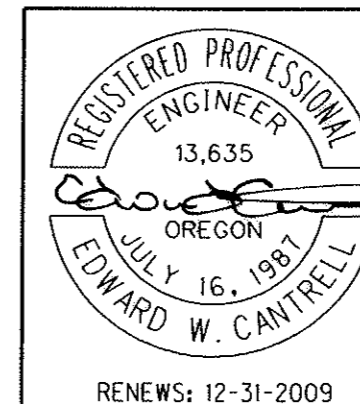
REGION 2 TECH CENTER

**I-5: TONGUE & GROOVE
BARRIER REPLACEMENT SEC.**
PACIFIC HIGHWAY
MARION COUNTY

Design Team Leader - Carol Cartwright
Designed By - Don Clark
Drafted By - Larry D. Garrison

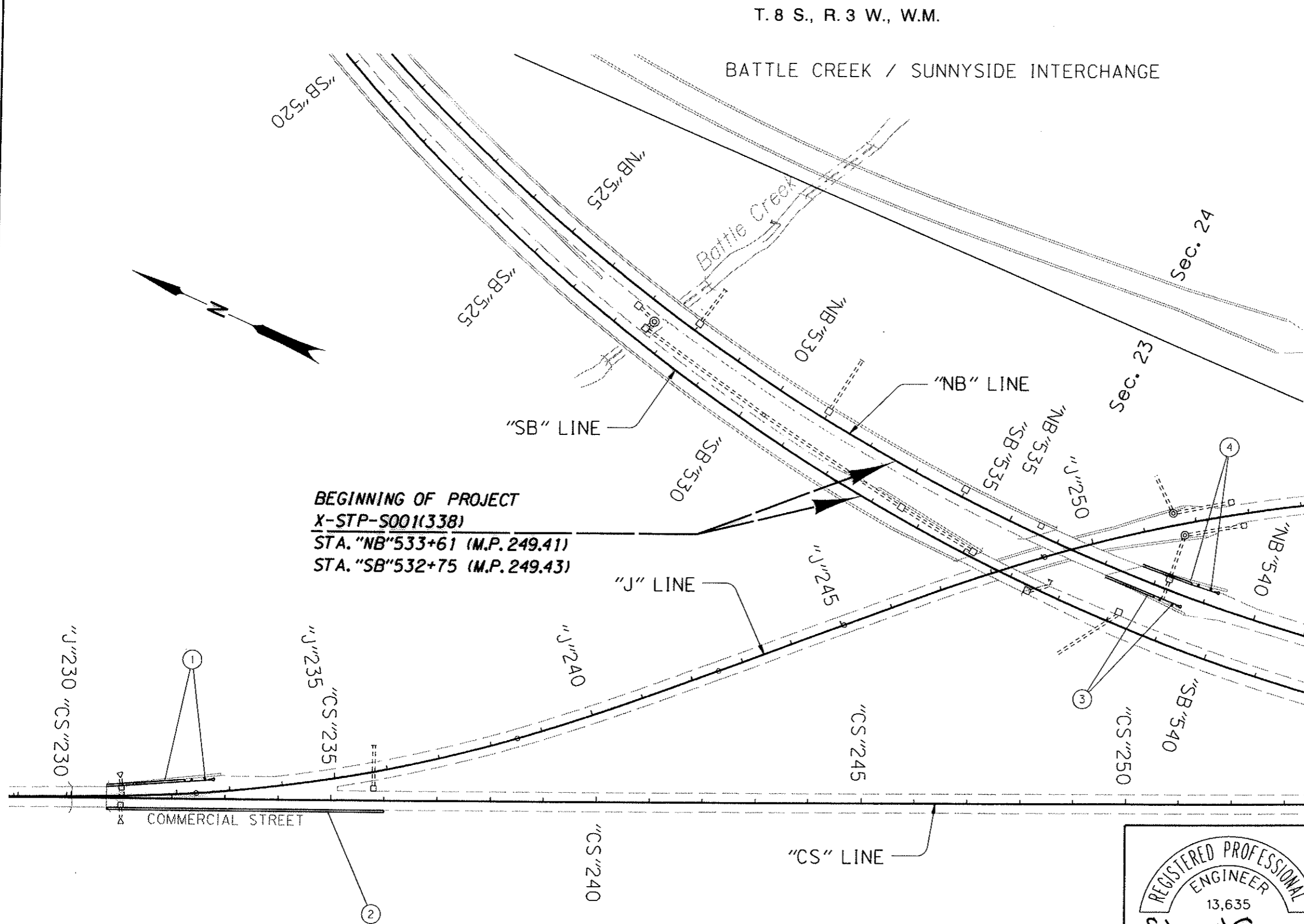
DETAILS

SHEET NO.
2A



T. 8 S., R. 3 W., W.M.


BATTLE CREEK / SUNNYSIDE INTERCHANGE



BEGINNING OF PROJECT
X-STP-S001(338)
STA. "NB"533+61 (M.P. 249.41)
STA. "SB"532+75 (M.P. 249.43)

- 42V-120
- ① Sta. "J"230+65 To Sta. "J"232+83.06, Lt.
 Remove Extg. Conc. Barrier - 220'
 Remove Extg. Earth Berm - 8 Cu. Yd.
 Const. Conc. Barrier - 138.4'
 (Anchor Barrier & Plug Scuppers)
 Const. Guardrail - 12.5' (Type 2A)
 - 12.5' (Type 3)
 Flare Rate=0, W=1', E=0
 Const. Guardrail To Barrier Transition
 Const. Conc. Barrier Transition To Bridge Rail
 Const. 37.5' Guardrail Terminal, Non-flared
 (Test Level 3)
 Inst. Yellow Type 5 Delineators - 5
 (For Details, See Sht. 2, Method "A")
 (See Drg. Nos. RD400, RD405, RD410,
 RD415, RD420, RD500, RD516 & RD520)
 - ② Sta. "CS"230+80 To Sta. "CS"235+95.9, Rt.
 Remove Extg. Conc. Barrier - 520'
 Const. Conc. Barrier - 515.9'
 (Anchor Barrier & Plug Scuppers)
 Const. Conc. Barrier Transition To Bridge Rail
 Const. Trailing End Terminal
 Inst. White Type 5 Delineators - 9
 (For Details, See Sht. 2, Method "A")
 (See Drg. No. RD510)
 - ③ Sta. "NB"537+10 To Sta. "NB"538+77.73, Rt.
 Remove Extg. Conc. Barrier - 165'
 Const. Conc. Barrier - 88.1'
 (Anchor Barrier & Plug Scuppers)
 Const. Guardrail - 12.5' (Type 2A)
 - 12.5' (Type 3)
 Flare Rate=0, W=1', E=0
 Const. Guardrail To Barrier Transition
 Const. Conc. Barrier Transition To Bridge Rail
 Const. 37.5' Guardrail Terminal, Non-flared
 (Test Level 3)
 Inst. White Type 5 Delineators - 4
 (For Details, See Sht. 2, Method "A")
 - ④ Sta. "NB"537+75 To Sta. "NB"539+42.73, Lt.
 Remove Extg. Conc. Barrier - 165'
 Const. Conc. Barrier - 88.1'
 (Anchor Barrier & Plug Scuppers)
 Const. Guardrail - 12.5' (Type 2A)
 - 12.5' (Type 3)
 Flare Rate=0, W=1', E=0
 Const. Guardrail To Barrier Transition
 Const. Conc. Barrier Transition To Bridge Rail
 Const. 37.5' Guardrail Terminal, Non-flared
 (Test Level 3)
 Inst. White Type 5 Delineators - 4
 (For Details, See Sht. 2, Method "A")

NOTE:
 Inst. Barrier Delineator Markers @ 50' Spacing

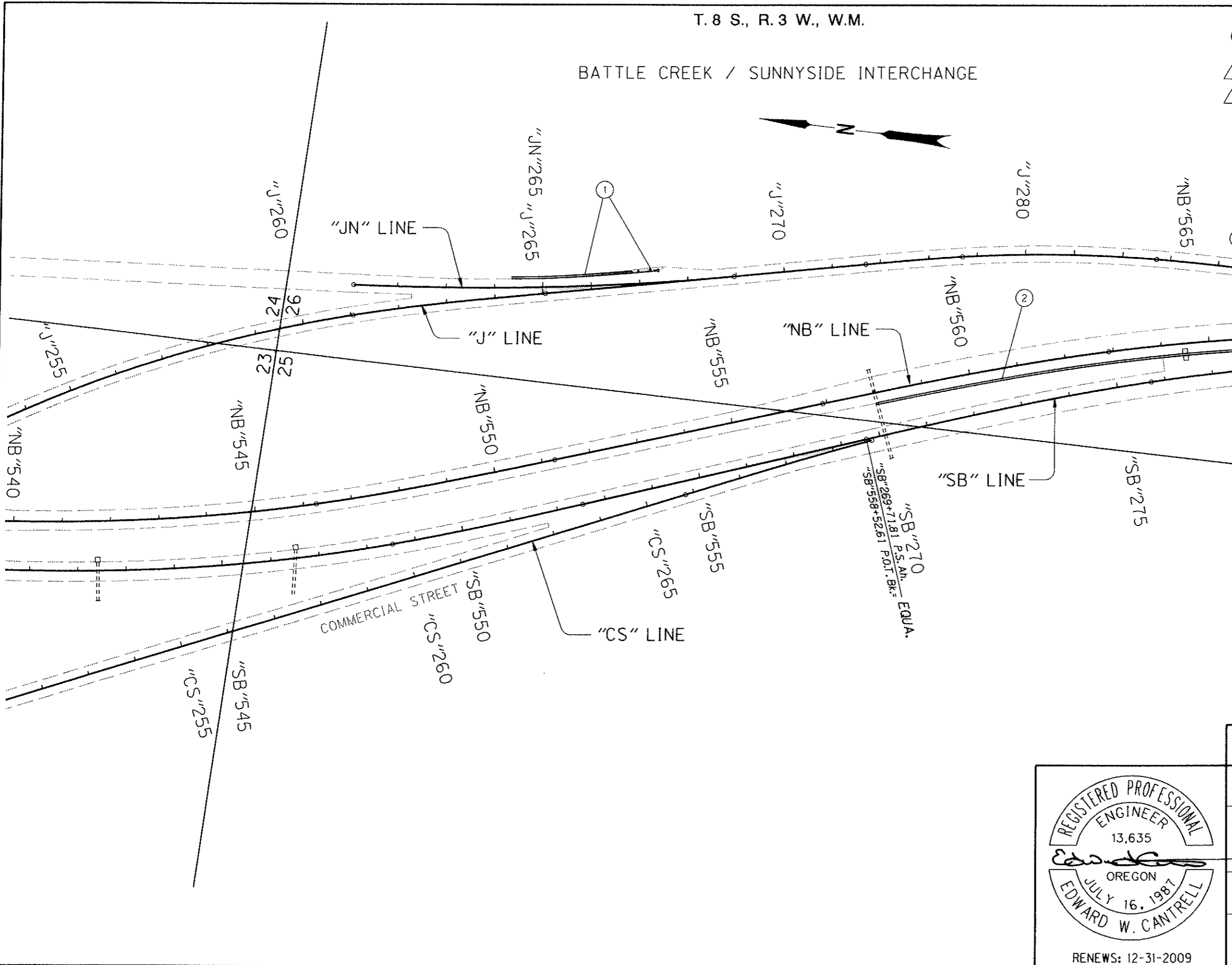
 OREGON DEPARTMENT OF TRANSPORTATION	
REGION 2 TECH CENTER	
1-5: TONGUE & GROOVE BARRIER REPLACEMENT SEC. PACIFIC HIGHWAY MARION COUNTY	
Design Team Leader - Carol Cartwright Designed By - Don Clark Drafted By - Larry D. Garrison	
GENERAL CONSTRUCTION	SHEET NO. 3

REGISTERED PROFESSIONAL
ENGINEER
13,635
Edward W. Cantrell
OREGON
JULY 16, 1987
EDWARD W. CANTRELL
RENEWS: 12-31-2009

⚠ Revised 5-21-2009, Changed Notes

T. 8 S., R. 3 W., W.M.

BATTLE CREEK / SUNNYSIDE INTERCHANGE



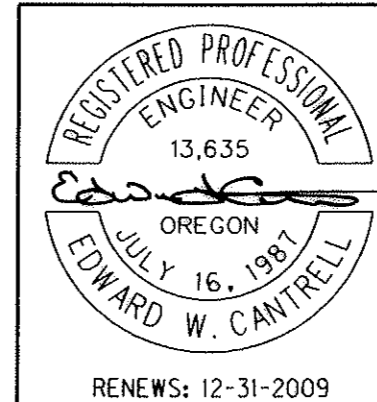
42V-120

- ① Sta. "JN"264+35 To Sta. "JN"267+53.73, Lt.
Remove Extg. Conc. Barrier - 313'
Remove Extg. Earth Berm - 8 Cu. Yd.
Const. Conc. Barrier - 239.1'
(Anchor Barrier)
Const. Guardrail - 12.5' (Type 2A)
- 12.5' (Type 3)
Flare Rate=0, W=1', E=0
Const. Guardrail To Barrier Transition
Const. Trailing End Terminal
Const. 37.5' Guardrail Terminal, Non-flared
(Test Level 3)
Inst. White Type 5 Delineators - 5
(For Details, See Sht. 2, Method "A")

- ② Sta. "NB"558+00 To Sta. "NB"565+04.67, Rt.
Remove Extg. Conc. Barrier - 704.67'
Const. Tall Conc. Barrier - 704.67'
Const. Trailing End Terminal
Inst. Yellow Type 5 Delineators - 14
(For Details, See Sht. 2, Method "A")
(See Drg. Nos. RD515 & RD545)

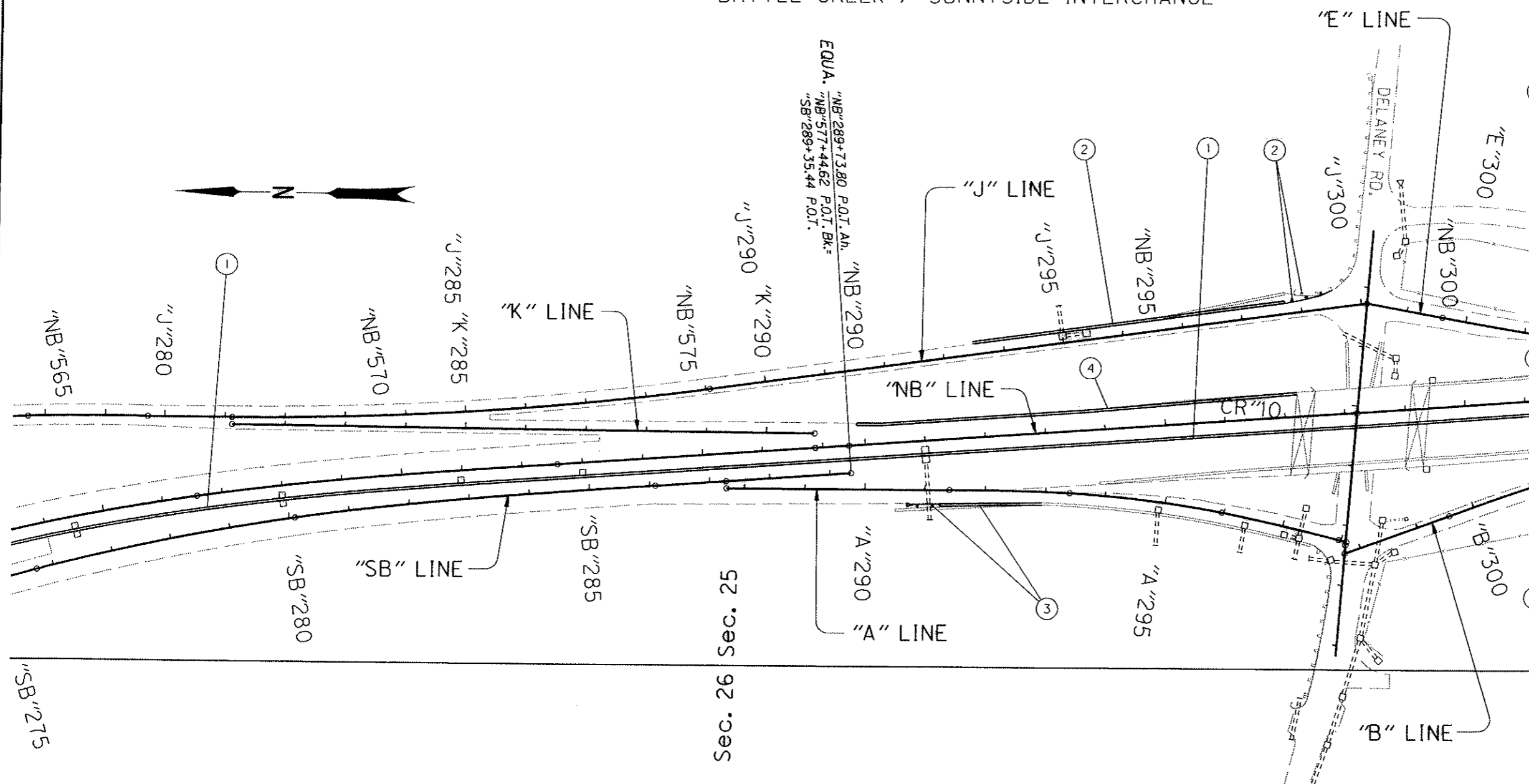
Revised 5-21-2009, Changed Notes

NOTE:
Inst. Barrier Delineator Markers @ 50' Spacing



OREGON DEPARTMENT OF TRANSPORTATION	
REGION 2 TECH CENTER	
1-5: TONGUE & GROOVE BARRIER REPLACEMENT SEC. PACIFIC HIGHWAY MARION COUNTY	
Design Team Leader - Carol Cortwright Designed By - Don Clark Drafted By - Larry D. Garrison	
GENERAL CONSTRUCTION	SHEET NO. 4

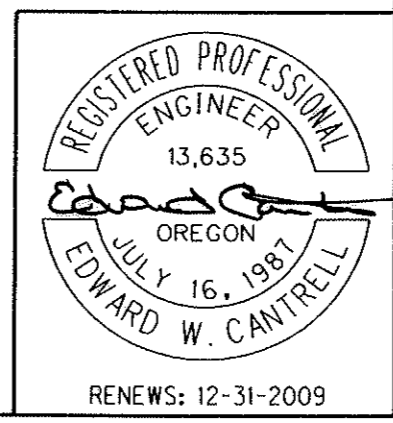
BATTLE CREEK / SUNNYSIDE INTERCHANGE



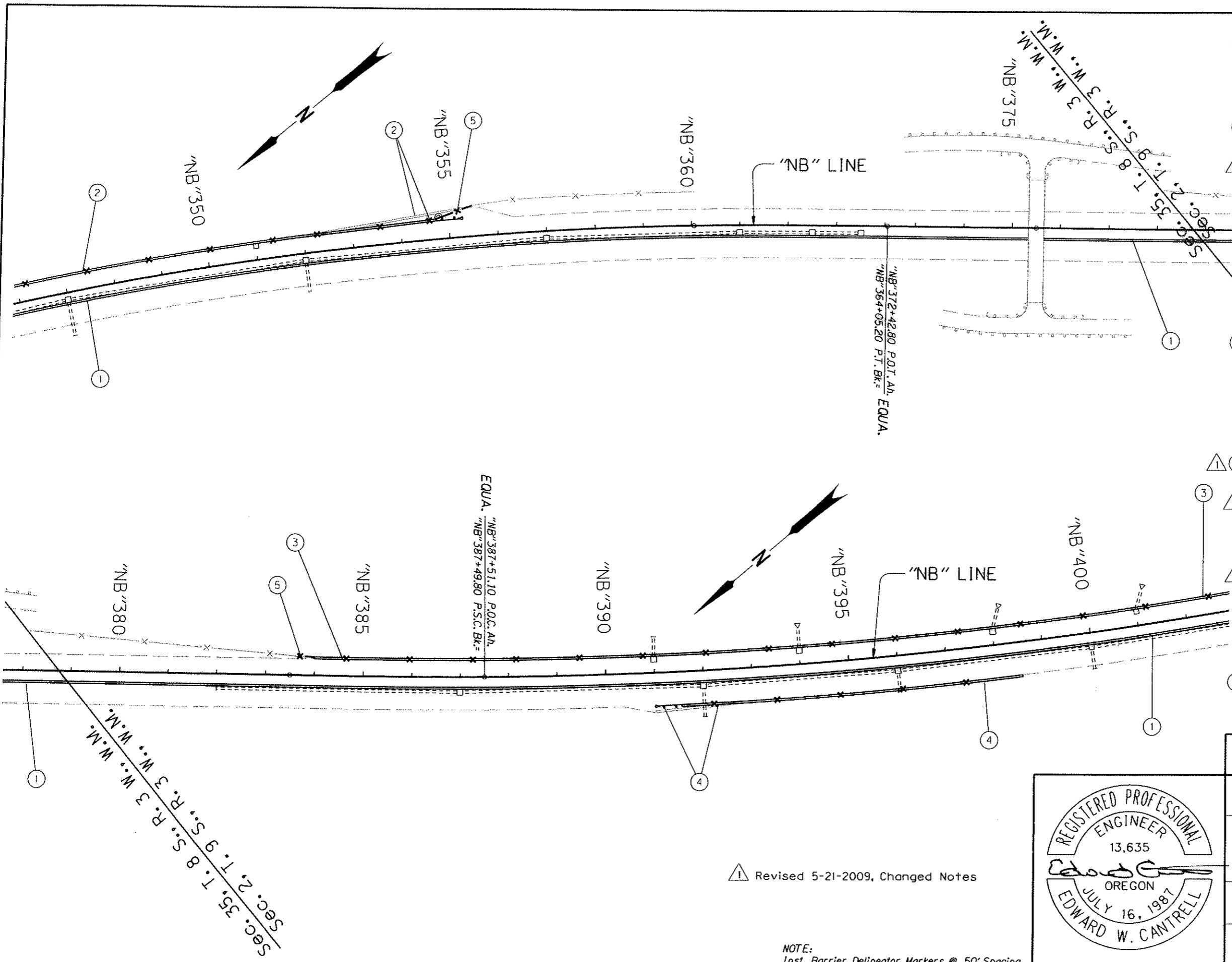
- ① Sta. "NB"565+04.67 To Sta. "NB"300+11.43, Lt.
Remove Extg. Conc. Barrier - 2,277.6'
Const. Tall Conc. Barrier - 2,277.6'
(Anchor Barrier)
Inst. Yellow Type 5 Delineators - 46
(For Details, See Sht. 2, Method "A")
- ② Sta. "J"293+50 To Sta. "J"299+50, Lt.
Remove Extg. Conc. Barrier - 525'
Remove Extg. Guardrail - 50'
Remove Earth Berm - 8 Cu. Yd.
Const. Conc. Barrier - 528.5'
(Anchor Barrier)
Const. Trailing End Terminal
Const. Guardrail - 37.5' (Type 2A)
- 12.5' (Type 3)
Connect To Extg. Guardrail
Const. Guardrail To Barrier Transition
(Post Holes To Be Drilled As Designated)
Inst. White Type 5 Delineators - 10
(For Details, See Sht. 2, Method "A")
- ③ Sta. "A"290+56.77 To Sta. "A"293+00, Rt.
Remove Extg. Conc. Barrier - 88.1'
Remove Earth Berm - 8 Cu. Yd.
Move Extg. Pinned Conc. Barrier - 163.6'
(Anchor Barrier)
Const. Guardrail - 12.5' (Type 2A)
- 12.5' (Type 3)
Const. Guardrail To Barrier Transition
Const. 37.5' Guardrail Terminal, Non-flared
(Test Level 3)
(Post Holes To Be Drilled As Designated)
Inst. White Type 5 Delineators - 13
(For Details, See Sht. 2, Method "A")
- ④ Sta. "NB"289+90.2 To Sta. "NB"297+20, Lt.
Const. Conc. Barrier - 729.8'
(Anchor Barrier)
Const. Conc. Barrier Transition To Bridge Rail
Const. Trailing End Terminal
Inst. White Type 5 Delineators - 15

NOTE:
Inst. Barrier Delineator Markers @ 50' Spacing

⚠ Revised 5-21-2009, Changed Notes



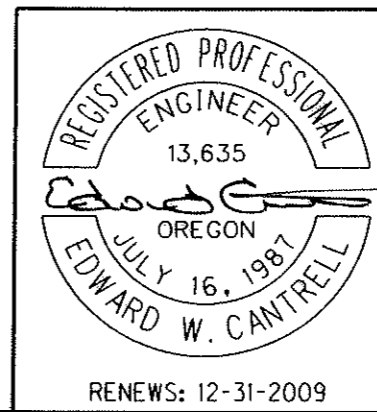
OREGON DEPARTMENT OF TRANSPORTATION	
REGION 2 TECH CENTER	
1-5: TONGUE & GROOVE BARRIER REPLACEMENT SEC. PACIFIC HIGHWAY MARION COUNTY	
Design Team Leader - Coral Cartwright Designed By - Don Clark Drafted By - Larry D. Garrison	
GENERAL CONSTRUCTION	SHEET NO. 5



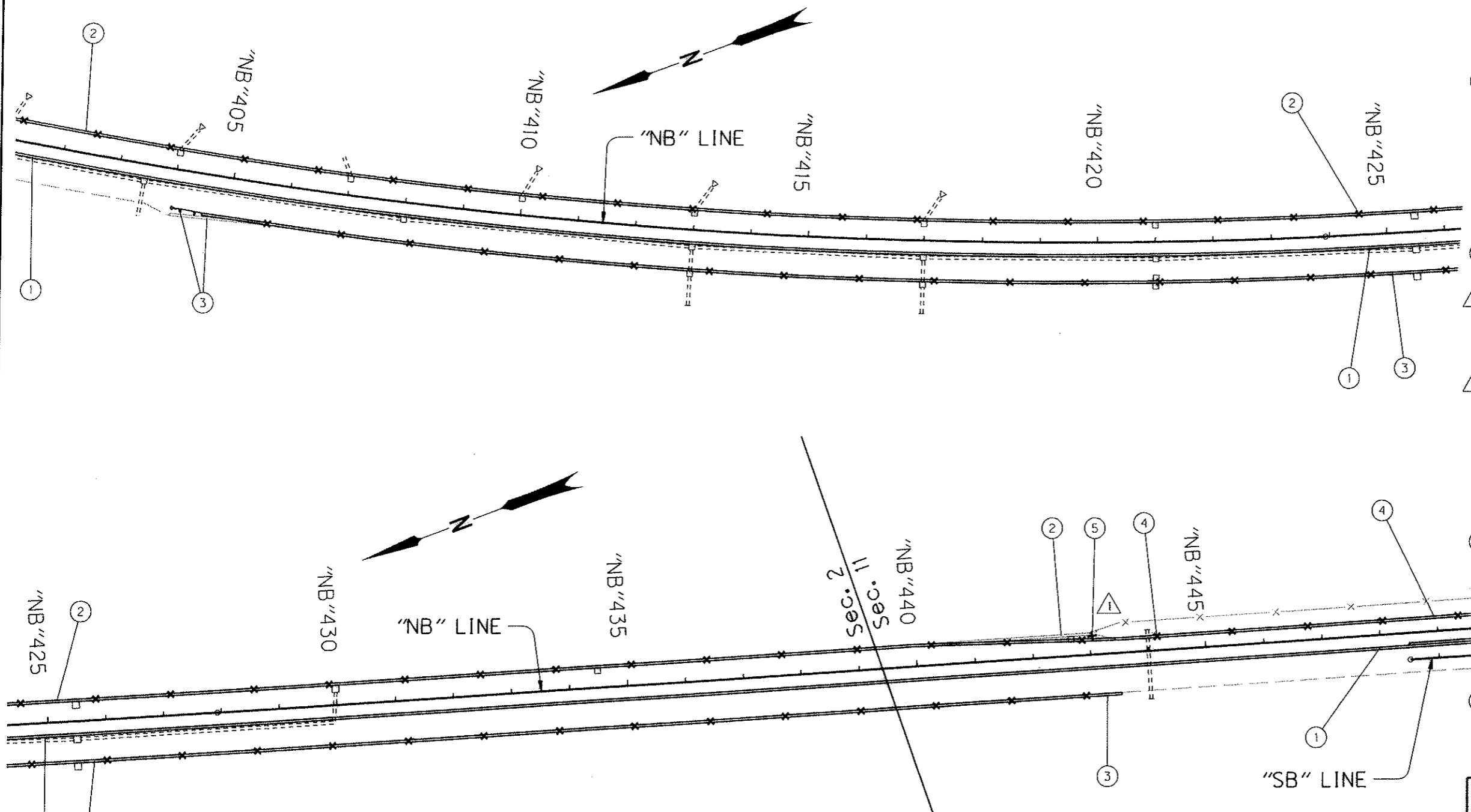
- ① Sta. "NB"347+42.76 To Sta. "NB"402+12.33, Rt.
Remove Extg. Conc. Barrier - 4,630.7'
Const. Tall Conc. Barrier - 4,630.7'
(Anchor Barrier)
Inst. Yellow Type 5 Delineators - 93
(For Details, See Sht. 2A, Method "A")
- ② Sta. "NB"347+12 To Sta. "NB"355+46.65, Lt.
Remove Extg. Conc. Barrier - 850'
Remove Earth Berm - 8 Cu. Yd.
Const. Tall Conc. Barrier - 755'
(Anchor Barrier)
Const. Guardrail Transition To Tall Conc. Barrier
Const. Type CL-4 Fence With Plastic Pickets On Barrier
Const. Guardrail - 12.5' (Type 2A) - 12.5' (Type 3)
Const. Guardrail To Barrier Transition
Const. 37.5' Guardrail Terminal, Non-flared (Test Level 3)
(Post Holes To Be Drilled As Designated)
Inst. Yellow 5 Delineators - 16
(For Details, See Shts. 2, Method "A" & 2A-2)
(See Drg. No. RD570)
- ③ Sta. "NB"384+00 To Sta. "NB"402+00.72, Lt.
Remove Extg. Conc. Barrier - 1,799.4'
Const. Tall Conc. Barrier - 1,799.4'
(Anchor Barrier)
Const. Trailing End Terminal
Const. Type CL-4 Fence With Plastic Pickets On Barrier
Inst. White Type 5 Delineators - 36
(For Details, See Shts. 2, Method "A" & 2A-2)
- ④ Sta. "NB"391+03.44 To Sta. "NB"398+50, Rt.
Remove Extg. Conc. Barrier - 750'
Remove Earth Berm - 8 Cu. Yd.
Const. Tall Conc. Barrier - 666.9'
(Anchor Barrier)
Const. Trailing End Terminal
Const. Guardrail Transition To Tall Conc. Barrier
Const. Type CL-4 Fence With Plastic Pickets On Barrier
Const. Guardrail - 12.5' (Type 2A) - 12.5' (Type 3)
Const. Guardrail To Barrier Transition
Const. 37.5' Guardrail Terminal, Non-flared (Test Level 3)
(Post Holes To Be Drilled As Designated)
Inst. White Type 5 Delineators - 14
(For Details, See Shts. 2, Method "B" & 2A-2)
- ⑤ Const. Type CL-6 Fence - 100'

⚠ Revised 5-21-2009, Changed Notes

NOTE:
Inst. Barrier Delineator Markers @ 50' Spacing



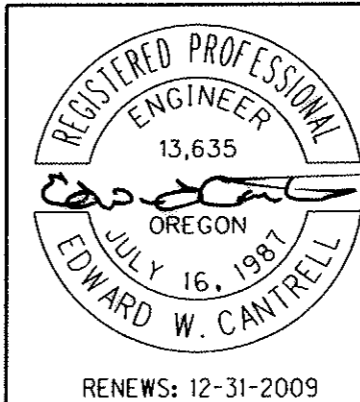
OREGON DEPARTMENT OF TRANSPORTATION	
REGION 2 TECH CENTER	
I-5: TONGUE & GROOVE BARRIER REPLACEMENT SEC. PACIFIC HIGHWAY MARION COUNTY	
Design Team Leader - Coral Cortwright Designed By - Don Clark Drafted By - Larry D. Garrison	
GENERAL CONSTRUCTION	SHEET NO. 7



- ① Sta. "NB"402+012.33 To Sta. "NB"449+05.91, Rt.
Remove Extg. Conc. Barrier - 4,693.6'
Const. Tall Conc. Barrier - 4,693.6'
(Anchor Barrier)
Inst. Yellow Type 5 Delineators - 94
(For Details, See Sht. 2, Method "A")
- ② Sta. "NB"402+00.72 To Sta. "NB"443+53.22, Lt.
Remove Extg. Conc. Barrier - 4,100'
Remove Earth Berm - 8 Cu. Yd.
Const. Tall Conc. Barrier - 4,152.5'
(Anchor Barrier)
Const. Type CL-4 Fence With
Plastic Pickets On Barrier
Inst. White Type 5 Delineators - 83
(For Details, See Shts. 2, Method "A" & 2A-2)
- ③ Sta. "NB"404+07.27 To Sta. "NB"443+50, Rt.
Remove Extg. Conc. Barrier - 3,950'
Remove Earth Berm - 8 Cu. Yd.
Const. Tall Conc. Barrier - 3,863.1'
(Anchor Barrier)
Const. Trailing End Terminal
Const. Guardrail Transition To Tall Conc. Barrier
Const. Type CL-4 Fence With
Plastic Pickets On Barrier
Const. Guardrail - 12.5' (Type 2A)
- 12.5' (Type 3)
Const. Guardrail To Barrier Transition
Const. 37.5' Guardrail Terminal, Non-flared
(Test Level 3)
(Post Holes To Be Drilled As Designated)
Inst. White Type 5 Delineators - 74
(For Details, See Shts. 2, Method "A" & "B", 2A & 2A-2)
- ④ Sta. "NB"443+53.2 To Sta. "NB"449+06.89, Lt.
Const. Tall Conc. Barrier - 553.7'
(With Scuppers & Anchor Barrier)
Const. Type CL-4 Fence With
Plastic Pickets On Barrier
Inst. White Type 5 Delineators - 11
(For Details, See Shts. 2, Method "C" & 2A-2)
- ⑤ Const. Type CL-6 Fence - 20'

NOTE:
Inst. Barrier Delineator Markers @ 50' Spacing

△ Revised 5-21-2009, Changed Notes



OREGON DEPARTMENT OF TRANSPORTATION	
REGION 2 TECH CENTER	
1-5: TONGUE & GROOVE BARRIER REPLACEMENT SEC. PACIFIC HIGHWAY MARION COUNTY	
Design Team Leader - Carol Cartwright Designed By - Don Clark Drafted By - Larry D. Garrison	
GENERAL CONSTRUCTION	SHEET NO. 8

① Sta. "NB"449+05.91 To Sta. "NB"464+15.91, Rt.
 Remove Extg. Conc. Barrier - 794'
 Const. Tall Conc. Barrier - 1,510'
 (With Scuppers & Anchor Barrier)
 Const. Trailing End Terminal
 Inst. Yellow Type 5 Delineators - 30
 (For Details, See Sht. 2 Method "A")

② Sta. "NB"449+06.89 To Sta. "NB"475+99.72, Lt.
 Remove Extg. Guardrail - 100'
 Const. Tall Conc. Barrier - 2,692.83'
 (With Scuppers & Anchor Barrier)
 Const. Type CL-4 Fence With
 Plastic Pickets On Barrier
 Inst. White Type 5 Delineators - 54
 (For Details, See Shts. 2, Method "C" & 2A-2)

③ Sta. "NB"475+99.72 To Sta. "NB"494+03.28, Lt.
 Remove Extg. Conc. Barrier - 1,800'
 Remove Earth Berm - 8 Cu. Yd.
 Const. Conc. Barrier - 1,723.9'
 (Anchor Barrier)
 Const. Tall Conc. Barrier To Conc. Barrier Transition
 Const. Guardrail - 12.5' (Type 2A)
 - 12.5' (Type 3)
 Const. Guardrail To Barrier Transition
 Const. 37.5' Guardrail Terminal, Non-flared
 (Test Level 3)
 Inst. White Type 5 Delineators - 35
 (For Details, See Sht. 2 Method "A")
 (See Drg. No. RD560)

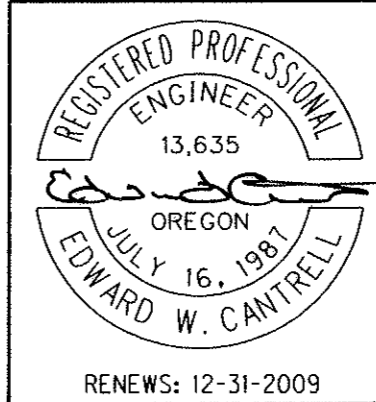
④ Sta. "SB"474+75 To Sta. "SB"475+50, Rt.
 Remove Extg. Guardrail - 75'
 Const. Guardrail - 37.5' (Type 2A)
 Const. Guardrail Terminal, Non-flared
 (Test Level 3)
 (Post Holes To Be Drilled As Designated)

⑤ Sta. "SB"486+40.85 To Sta. "SB"494+00, Rt.
 Remove Extg. Barrier - 750'
 Remove Earth Berm - 8 Cu. Yd.
 Const. Conc. Barrier - 679.5'
 (Anchor Barrier)
 Const. Trailing End Terminal
 Const. Guardrail - 12.5' (Type 2A)
 - 12.5' (Type 3)
 Const. Guardrail To Barrier Transition
 Const. 37.5' Guardrail Terminal, Non-flared
 (Test Level 3)
 Inst. White Type 5 Delineators - 15
 (For Details, See Sht. 2 Method "A")

⑥ Sta. "NB"448+50 To Sta. "NB"464+27.06, Rt.
 Const. Tall Conc. Barrier - 1,497.4'
 (With Scuppers & Anchor Barrier)
 Const. Trailing End Terminal
 Const. Guardrail - 12.5' (Type 2A)
 - 12.5' (Type 3)
 Const. Guardrail To Barrier Transition
 Const. 37.5' Guardrail Terminal, Non-flared
 (Test Level 3)
 Inst. Yellow Type 5 Delineators - 30
 (For Details, See Sht. 2, Method "A")

⚠ Revised 5-21-2009, Changed Notes

NOTE:
 Inst. Barrier Delineator Markers @ 50' Spacing



OREGON DEPARTMENT OF TRANSPORTATION	
REGION 2 TECH CENTER	
I-5: TONGUE & GROOVE BARRIER REPLACEMENT SEC. PACIFIC HIGHWAY MARION COUNTY	
Design Team Leader - Carol Cortwright Designed By - Don Clark Drafted By - Larry D. Garrison	
CONSTRUCTION NOTES	SHEET NO. 9A

① See Sht. 9A, Note 3
Remove Extg. Conc. Barrier
Const. Conc. Barrier

② Sta. "NB"500+00 To Sta. "NB"509+11.57, L1.
Remove Extg. Conc. Barrier - 588'
Remove Extg. Guardrail - 38'
Remove Earth Berm - 8 Cu. Yd.
Adjust Extg. Guardrail - 275'
Const. Conc. Barrier - 515.9'
(Anchor Barrier)
① Const. Guardrail - 12.5' (Type 2A)
- 25' (Type 3)
Const. Guardrail To Barrier Transition - 2
Connect To Extg. Guardrail
Const. 37.5' Guardrail Terminal, Non-flared
(Test Level 3)
(Post Holes To Be Drilled As Designated)
Inst. White Type 5 Delineators - 11
(For Details, See Sht. 2 Method "A")

③ Sta. "SB"501+18.35 To Sta. "SB"503+50, L1.
Remove Extg. Conc. Barrier - 225'
Remove Earth Berm - 8 Cu. Yd.
Const. Tall Conc. Barrier - 151'
(With Scuppers & Anchor Barrier)
Const. Trailing End Terminal
① Const. Guardrail - 12.5' (Type 2A)
- 12.5' (Type 3)
Const. Guardrail To Barrier Transition
Const. 37.5' Guardrail Terminal, Non-flared
(Test Level 3)
(Post Holes To Be Drilled As Designated)
Inst. Yellow Type 5 Delineators - 3
(For Details, See Sht. 2 Method "A")

④ Sta. "SB"499+54.77 To Sta. "SB"503+50, Rt.
Remove Extg. Conc. Barrier - 400'
Remove Earth Berm - 8 Cu. Yd.
Const. Tall Conc. Barrier - 314.6'
(With Scuppers & Anchor Barrier)
Const. Trailing End Terminal
① Const. Guardrail - 12.5' (Type 2A)
- 12.5' (Type 3)
Const. Guardrail To Barrier Transition
Const. 37.5' Guardrail Terminal, Non-flared
(Test Level 3)
(Post Holes To Be Drilled As Designated)
Inst. Yellow Type 5 Delineators - 7
(For Details, See Sht. 2 Method "A")

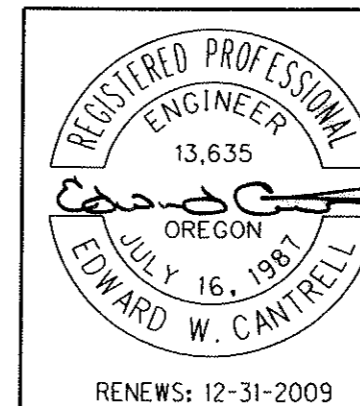
⑤ Sta. "NB"503+13 To Sta. "NB"509+09.55, Rt.
Remove Extg. Conc. Barrier - 588'
Const. Tall Conc. Barrier - 515.9'
(With Scuppers & Anchor Barrier)
Const. Trailing End Terminal
① Const. Guardrail - 12.5' (Type 2A)
- 12.5' (Type 3)
Const. Guardrail To Barrier Transition
Const. 37.5' Guardrail Terminal, Non-flared
(Test Level 3)
(Post Holes To Be Drilled As Designated)
Inst. Yellow Type 5 Delineators - 11
(For Details, See Sht. 2 Method "A")

⑥ Sta. "D"501+00 To Sta. "D"501+37.5, L1.
Remove Extg. Guardrail - 38'
Const. 37.5' Guardrail Terminal, Non-flared
(Test Level 3)
Connect To Extg. Guardrail
(Post Holes To Be Drilled As Designated)

⑦ Sta. "B"504+12.5 To Sta. "B"504+50, Rt.
Remove Extg. Guardrail - 38'
Const. 37.5' Guardrail Terminal, Non-flared
(Test Level 3)
Connect To Extg. Guardrail
(Post Holes To Be Drilled As Designated)

① Revised 5-21-2009, Changed Notes

NOTE:
Inst. Barrier Delineator Markers @ 50' Spacing



OREGON DEPARTMENT OF TRANSPORTATION	
REGION 2 TECH CENTER	
I-5: TONGUE & GROOVE BARRIER REPLACEMENT SEC. PACIFIC HIGHWAY MARION COUNTY	
Design Team Leader - Carol Cartwright Designed By - Don Clark Drafted By - Larry D. Garrison	
CONSTRUCTION NOTES	SHEET NO. 10A