



Oregon

Theodore R. Kulongoski, Governor

Department of Transportation
Technical Services
Roadway Engineering Section
355 Capitol Street NE, Room 222
Salem, OR 97301-3871
Telephone 503-986-3714
FAX 503-986-3749

DATE: January 15, 2009

Addenda No. 1

TO: PLAN HOLDERS

PREPARED BY: *Shane Terwilliger*
Shane Terwilliger PLS

APPROVED BY: *Carol A. Cartwright*
Carol Cartwright PE

SUBJECT: I-5 @ Kuebler Interchange Improvements Section
Pacific Highway
Marion County
Grading, Drainage, Structures, Paving, Signing, Illumination,
Signals & Roadside Development Project
(Bids to be opened and read January 22, 2009)

The following changes are made to the Project Bid Booklet:

1. The following changes are made to the Project Bid Items:

a. Quantity changes:

<u>Number</u>	<u>Item</u>	<u>Quantity</u>	
		<u>Original</u>	<u>New</u>
0340	12 INCH STORM SEWER PIPE, 5FT DEPTH	837	883
00390	CONCRETE INLETS, TYPE G2-MA	1	2

b. Added items:

<u>Number</u>	<u>Item</u>	<u>Unit</u>	<u>Quantity</u>
1240	TYPE "G-2" SIGNS IN PLACE	SQFT	17

c. Name changes:

<u>Number</u>	<u>Item</u>
1070	CROSSWALK CLOSURE BARRICADES

Make a copy of and use the new attached Bid Sheets. A Bid **not** including these new Bid Sheets **will be rejected as non-responsive**.

The following changes are made to the Project Special Provisions:

1. Subsection **00930.80 Measurement** - The following item and estimated quantity (lbs) is added to the table:

Adjustable Sign Mounts.....24

2. Section 00902 – Crosswalk Closure Barricade - This Section is added after Section 00867:

SECTION 00902 - CROSSWALK CLOSURE BARRICADES

Section 00902, which is not a Standard Specification, is included in this Project by Special Provision.

Description

00902.00 Scope - This work consists of constructing crosswalk closure barricades as shown.

Materials

00902.10 Materials - Furnish materials meeting the following requirements:

Commercial Grade Concrete	00440
Steel	02530
Signs	00940

Construction

00902.40 General - Construct crosswalk barricades as shown or directed.

Measurement

00902.80 Measurement - The quantities of crosswalk closure barricades will be measured on the unit basis.

Payment

00902.90 Payment - The accepted quantities of work done under this Section will be paid for at the Contract unit price, per each, for the item "Crosswalk Closure Barricades".

Payment will be payment in full for furnishing and placing all materials, and for furnishing all equipment, labor, and incidentals necessary to complete the work as specified.

3. Section **1070 - Mailbox Supports** - This entire Section is deleted.

The following changes are made to the Project Plans:

1. Plan sheets 2D, 4, 4A, 4C, 5A, 6, GA-3, GA-4, 80864, 80865, S-10653, S-10655, S-10656, are replaced with revised plan sheets 2D, 4, 4A, 4C, 5A, 6, GA-3, GA-4, 80864, 80865, S-10653, S-10655, S-10656.

These changes will be included in the Contract for this Project. It is understood that your Bid will be submitted accordingly.

Make copies of the new Bid Sheets to replace the Special Provisions Bid Schedule Sheets.

ST:ms

Attachments: New Bid Sheets
Revised Plan Sheets

BID SCHEDULE

CONTRACT ID: 13973

PROJECT: I-5 @ KUEBLER INTERCHANGE
IMPROVEMENTS

PROJECT KEY: 14054

ADDENDUM NUMBER: 1

ITEM NO	ITEM DESCRIPTION	QUANTITY AND UNITS	UNIT PRICE (IN FIGURES)	BID AMOUNT (IN FIGURES)
---------	------------------	--------------------	----------------------------	----------------------------

SECTION 0001 TEMPORARY FEATURES AND APPURTENANCES

0010	0100-0100000T ON-THE-JOB TRAINING	HOUR	1,200.00	
0020	0210-0100000A MOBILIZATION	LS	ALL	
0030	0225-0100000A TEMPORARY PROTECTION AND DIRECTION OF TRAFFIC	LS	ALL	
0040	0225-0102000J TEMPORARY SIGNS	SQFT	1,120.00	
0050	0225-0104000E TEMPORARY BARRICADES, TYPE II	EACH	5.00	
0060	0225-0105000E TEMPORARY BARRICADES, TYPE III	EACH	10.00	
0070	0225-0133000E TEMPORARY IMPACT ATTENUATOR	EACH	1.00	
0080	0225-0138000E TEMPORARY IMPACT ATTENUATOR, TRUCK MOUNTED	EACH	1.00	
0090	0225-0141200E REPAIR TEMPORARY IMPACT ATTENUATOR	EACH	2.00	
0100	0225-0141400E REPAIR TEMPORARY IMPACT ATTENUATOR, TRUCK MOUNTED	EACH	1.00	
0110	0225-0145000E TEMPORARY PLASTIC DRUMS	EACH	120.00	

BID SCHEDULE

CONTRACT ID: 13973

PROJECT: I-5 @ KUEBLER INTERCHANGE
IMPROVEMENTS

PROJECT KEY: 14054

ADDENDUM NUMBER: 1

ITEM NO	ITEM DESCRIPTION	QUANTITY AND UNITS	UNIT PRICE (IN FIGURES)	BID AMOUNT (IN FIGURES)
0120	0225-0150000F TEMPORARY REMOVABLE TAPE	200.00 FOOT		
0130	0225-0162000E SEQUENTIAL ARROW SIGNS	1.00 EACH		
0140	0225-0164000E PORTABLE CHANGEABLE MESSAGE SIGNS	2.00 EACH		
0150	0225-0168000T FLAGGERS	600.00 HOUR		
0160	0225-0168100E FLAGGER STATION LIGHTING	3.00 EACH		
0170	0225-9Z90000F RELOCATING EXISTING CONCRETE BARRIER	2,467.00 FOOT		
0180	0280-0100000A EROSION CONTROL	ALL LS		
0190	0280-0106000E CHECK DAM	6.00 EACH		
0200	0280-0110000E CONSTRUCTION ENTRANCE	1.00 EACH		
0210	0280-0114000E INLET PROTECTION	22.00 EACH		
0220	0280-9Z90000F COMPOST FILTER BERM	6,000.00 FOOT		
0230	0280-9Z90000F COMPOST FILTER SOCK	320.00 FOOT		
0240	0280-9Z90000J COMPOST EROSION BLANKET	12,650.00 SQYD		

BID SCHEDULE

CONTRACT ID: 13973

PROJECT: I-5 @ KUEBLER INTERCHANGE
IMPROVEMENTS

PROJECT KEY: 14054

ADDENDUM NUMBER: 1

ITEM NO	ITEM DESCRIPTION	QUANTITY AND UNITS	UNIT PRICE (IN FIGURES)	BID AMOUNT (IN FIGURES)
0250	0290-0100000A POLLUTION CONTROL PLAN	LS ALL		

SECTION 0002 ROADWORK

0260	0305-0100000A CONSTRUCTION SURVEY WORK	LS ALL		
0270	0310-0106000A REMOVAL OF STRUCTURES AND OBSTRUCTIONS	LS ALL		
0280	0320-0100000A CLEARING AND GRUBBING	LS ALL		
0290	0330-0123000K EMBANKMENT IN PLACE	CUYD 49,500.00		
0300	0330-0126000K STONE EMBANKMENT	CUYD 12,500.00		
0310	0331-0109000J 18 INCH SUBGRADE STABILIZATION	SQYD 900.00		
0320	0350-0104000J RIPRAP GEOTEXTILE, TYPE 2	SQYD 19,500.00		
0330	0350-0105000J SUBGRADE GEOTEXTILE	SQYD 3,200.00		

SECTION 0003 DRAINAGE AND SEWERS

0340	0445-035012AF 12 INCH STORM SEWER PIPE, 5 FT DEPTH	FOOT 883.00		
0350	0445-0700120E SLOPED END SECTIONS, 12 INCH	EACH 1.00		

BID SCHEDULE

CONTRACT ID: 13973

PROJECT: I-5 @ KUEBLER INTERCHANGE
IMPROVEMENTS

PROJECT KEY: 14054

ADDENDUM NUMBER: 1

ITEM NO	ITEM DESCRIPTION	QUANTITY AND UNITS	UNIT PRICE (IN FIGURES)	BID AMOUNT (IN FIGURES)
0360	0470-0101000E CONCRETE STORM SEWER MANHOLES	2.00 EACH		
0370	0470-0105000E CONCRETE MANHOLES, SHALLOW	2.00 EACH		
0380	0470-0315000E CONCRETE INLETS, TYPE G-2	7.00 EACH		
0390	0470-0319000E CONCRETE INLETS, TYPE G-2MA	2.00 EACH		
0400	0480-0100000F DRAINAGE CURBS	1,360.00 FOOT		
0410	0490-0100000E ADJUSTING BOXES	2.00 EACH		
0420	0490-0104000E CONNECTION TO EXISTING STRUCTURES	1.00 EACH		
0430	0490-0105000E ADJUSTING INLETS	4.00 EACH		
0440	0490-0120000E MINOR ADJUSTMENT OF MANHOLES	2.00 EACH		
0450	0490-9Z90000E MANHOLE ORIFICE ENLARGEMENT	1.00 EACH		

SECTION 0004 BRIDGES

0460	0510-0108000A GRANULAR STRUCTURE BACKFILL	ALL LS		
0470	0520-0100000A FURNISH PILE DRIVING EQUIPMENT	ALL LS		

BID SCHEDULE

CONTRACT ID: 13973

PROJECT: I-5 @ KUEBLER INTERCHANGE
IMPROVEMENTS

PROJECT KEY: 14054

ADDENDUM NUMBER: 1

ITEM NO	ITEM DESCRIPTION	QUANTITY AND UNITS	UNIT PRICE (IN FIGURES)	BID AMOUNT (IN FIGURES)
0480	0520-0134000F FURNISH PP 20 X 0.5 STEEL PILES	750.00 FOOT		
0490	0520-0319000E DRIVE PP 20 X 0.5 STEEL PILES	10.00 EACH		
0500	0520-0330000E REINFORCED PILE TIPS	10.00 EACH		
0510	0520-0430000E PP 20 X 0.5 STEEL PILE SPLICES	2.00 EACH		
0520	0530-0100000A REINFORCEMENT	ALL LS		
0530	0540-0102000A FOUNDATION CONCRETE, CLASS 3600	ALL LS		
0540	0540-0204000A DECK CONCRETE, CLASS HPC4500	ALL LS		
0550	0540-0302000A GENERAL STRUCTURAL CONCRETE, CLASS 3600	ALL LS		
0560	0540-0401000J SAW CUT TEXTURING	348.00 SQYD		
0570	0545-0100000J REINFORCED CONCRETE BRIDGE END PANELS	207.00 SQYD		
0580	0550-0100000F BI 53 PRECAST PRESTRESSED GIRDERS	737.00 FOOT		
0590	0583-0103000F 1-1/4 INCH ELECTRICAL CONDUIT	98.00 FOOT		
0600	0587-0109000A CONCRETE BRIDGE RAIL	ALL LS		

BID SCHEDULE

CONTRACT ID: 13973

PROJECT: I-5 @ KUEBLER INTERCHANGE
IMPROVEMENTS

PROJECT KEY: 14054

ADDENDUM NUMBER: 1

ITEM NO	ITEM DESCRIPTION	QUANTITY AND UNITS	UNIT PRICE (IN FIGURES)	BID AMOUNT (IN FIGURES)
0610	0596-0104000J RETAINING WALL, MSE	2,650.00 SQFT		
0620	0596-0106000F MSE WALL COPING	240.00 FOOT		
0630	0599-0100000J CONCRETE SLOPE PAVING	1,435.00 SQFT		
0640	0599-0103000F SLOPE PAVING CURBS	161.00 FOOT		

SECTION 0005 BASES

0650	0620-0104000J COLD PLANE PAVEMENT REMOVAL, 0 - 2 INCHES DEEP	10,400.00 SQYD		
0660	0641-0102000M AGGREGATE BASE	7,200.00 TON		

SECTION 0006 WEARING SURFACES

0670	0745-0302000M LEVEL 3, 1/2 INCH DENSE HMAC	4,900.00 TON		
0680	0745-0312000M LEVEL 3, 1/2 INCH OPEN HMAC	310.00 TON		
0690	0745-0640000M PG 70-22 ASPHALT IN HMAC	330.00 TON		

SECTION 0007 PERMANENT TRAFFIC SAFETY AND GUIDANCE DEVICES

0700	0810-0104000F GUARDRAIL, TYPE 2A	2,575.00 FOOT		
------	-------------------------------------	------------------	--	--

BID SCHEDULE

CONTRACT ID: 13973

PROJECT: I-5 @ KUEBLER INTERCHANGE
IMPROVEMENTS

PROJECT KEY: 14054

ADDENDUM NUMBER: 1

ITEM NO	ITEM DESCRIPTION	QUANTITY AND UNITS	UNIT PRICE (IN FIGURES)	BID AMOUNT (IN FIGURES)
0710	0810-0107000F GUARDRAIL, TYPE 3	25.00 FOOT		
0720	0810-0120000E GUARDRAIL ANCHORS, TYPE 1 MODIFIED	3.00 EACH		
0730	0810-0122000E GUARDRAIL END PIECES, TYPE B	1.00 EACH		
0740	0810-0126000E GUARDRAIL TRANSITION	2.00 EACH		
0750	0810-0129000E GUARDRAIL TERMINALS, NON-FLARED	2.00 EACH		
0760	0810-0130000E GUARDRAIL TERMINALS, FLARED	1.00 EACH		
0770	0810-9Z90000A EXTRA FOR GUARDRAIL SHIN PROTECTORS	ALL LS		
0780	0820-0100000F CONCRETE BARRIER	335.00 FOOT		
0790	0851-0101000F PAVEMENT LINE REMOVAL	1,656.00 FOOT		
0800	0851-0103000E PAVEMENT LEGEND REMOVAL	2.00 EACH		
0810	0865-0107000F THERMOPLASTIC, NON-PROFILE, 120 MILS, EXTRUDED	12,108.00 FOOT		
0820	0867-0103000E PAVEMENT LEGEND, TYPE B: ARROWS	4.00 EACH		
0830	0867-0131000E PAVEMENT LEGEND, TYPE B: BICYCLE LANE STENCIL	2.00 EACH		

BID SCHEDULE

CONTRACT ID: 13973

PROJECT: I-5 @ KUEBLER INTERCHANGE
IMPROVEMENTS

PROJECT KEY: 14054

ADDENDUM NUMBER: 1

ITEM NO	ITEM DESCRIPTION	QUANTITY AND UNITS	UNIT PRICE (IN FIGURES)	BID AMOUNT (IN FIGURES)
0840	0867-0145000J PAVEMENT BAR, TYPE B	SQFT	250.00	

SECTION 0008 PERMANENT TRAFFIC CONTROL AND ILLUMINATION SYSTEMS

0850	0905-0100000A REMOVE EXISTING SIGNS	LS	ALL	
0860	0910-0100000K WOOD SIGN POSTS	FBM	200.00	
0870	0920-0100000A SIGN SUPPORT FOOTINGS	LS	ALL	
0880	0930-0108000A ADJUSTABLE SIGN MOUNTS	LS	ALL	
0890	0930-0111000A MULTI-POST BREAKAWAY SIGN SUPPORTS	LS	ALL	
0900	0930-0112000A TRIANGULAR BASE BREAKAWAY SIGN SUPPORTS	LS	ALL	
0910	0930-0117000A SQUARE TUBE SIGN SUPPORTS	LS	ALL	
0920	0940-0109000J TYPE "F" SIGNS IN PLACE	SQFT	16.00	
0930	0940-0113000J TYPE "G" SIGNS IN PLACE	SQFT	282.00	
0940	0940-0114000J TYPE "G1" SIGNS IN PLACE	SQFT	14.00	
0950	0940-0124000J TYPE "W1" SIGNS IN PLACE	SQFT	33.00	

BID SCHEDULE

CONTRACT ID: 13973

PROJECT: I-5 @ KUEBLER INTERCHANGE
IMPROVEMENTS

PROJECT KEY: 14054

ADDENDUM NUMBER: 1

ITEM NO	ITEM DESCRIPTION	QUANTITY AND UNITS	UNIT PRICE (IN FIGURES)	BID AMOUNT (IN FIGURES)
0960	0940-0127000J TYPE "W4" SIGNS IN PLACE	SQFT 30.00		
0970	0940-0134000J TYPE "Y1" SIGNS IN PLACE	SQFT 25.00		
0980	0963-0102000F 42 INCH DIAMETER SIGNAL SUPPORT DRILLED SHAFT	FOOT 18.50		
0990	0970-0100000A POLE FOUNDATIONS	LS ALL		
1000	0970-0101000A LIGHTING POLES, FIXED BASE	LS ALL		
1010	0970-0103000A LIGHTING POLE ARMS	LS ALL		
1020	0970-0104000A LUMINAIRES, LAMPS, AND BALLASTS - UNDERDECK	LS ALL		
1030	0970-0104000A LUMINAIRES, LAMPS, AND BALLASTS - COBRA HEAD	LS ALL		
1040	0970-0105000A SWITCHING, CONDUIT, AND WIRING	LS ALL		
1050	0970-0106000A REFURBISHING AND REINSTALLING EXISTING ILLUMINATION SYSTEMS	LS ALL		
1060	0990-0102000A TRAFFIC SIGNAL MODIFICATION	LS ALL		
1070	0902-0100000E CROSSWALK CLOSURE BARRICADES	EACH 1.00		

SECTION 0009 RIGHT-OF-WAY DEVELOPMENT AND CONTROL

BID SCHEDULE

CONTRACT ID: 13973

PROJECT: I-5 @ KUEBLER INTERCHANGE
IMPROVEMENTS

PROJECT KEY: 14054

ADDENDUM NUMBER: 1

ITEM NO	ITEM DESCRIPTION	QUANTITY AND UNITS	UNIT PRICE (IN FIGURES)	BID AMOUNT (IN FIGURES)
1080	1030-0102000E SEEDING MOBILIZATION	EACH 1.00		
1090	1030-0108000R PERMANENT SEEDING	ACRE 4.00		
1100	1030-0118000R WATER QUALITY SEEDING	ACRE 0.60		
1110	1040-0100000E SOIL TESTING	EACH 1.00		
1120	1040-0107000K SOIL CONDITIONER	CUYD 540.00		
1130	1040-0112000E CONIFER TREES, 4 FT HEIGHT	EACH 75.00		
1140	1040-0125000E DECIDUOUS TREES, 3/4 INCH CALIPER	EACH 3.00		
1150	1040-0126000E DECIDUOUS TREES, 1 INCH CALIPER	EACH 10.00		
1160	1040-0152000E SHRUBS, SIZE 18" - 24", BARE ROOT	EACH 764.00		
1170	1040-0153000E SHRUBS, NO. 1 CONTAINER	EACH 405.00		
1180	1040-0154000E SHRUBS, NO. 2 CONTAINER	EACH 165.00		
1190	1040-0156000E SHRUBS, SIZE 18" - 24", CONTAINER	EACH 60.00		
1200	1040-0190000K BARK MULCH	CUYD 250.00		

BID SCHEDULE

CONTRACT ID: 13973

PROJECT: I-5 @ KUEBLER INTERCHANGE
IMPROVEMENTS

PROJECT KEY: 14054

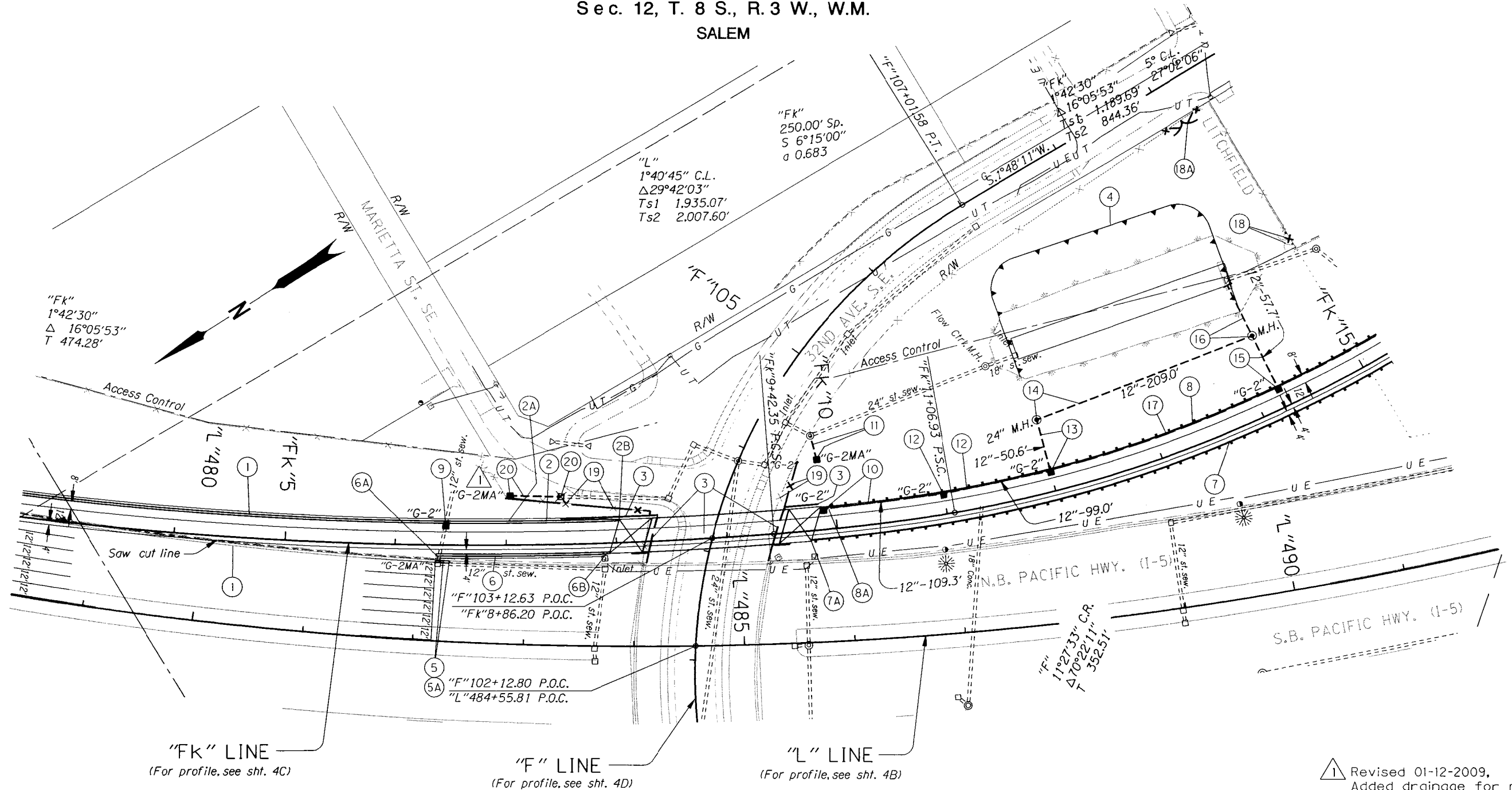
ADDENDUM NUMBER: 1

ITEM NO	ITEM DESCRIPTION	QUANTITY AND UNITS	UNIT PRICE (IN FIGURES)	BID AMOUNT (IN FIGURES)
1210	1050-0135000F CL-6 CHAIN-LINK FENCE	FOOT 14.00		
1220	1050-0240000F REMOVING AND REBUILDING FENCE	FOOT 178.00		
1230	1091-9Z90000A WATER QUALITY SWALE	LS ALL		

SECTION 0010 ADDED BID ITEMS

1240	0940-0115000J TYPE "G2" SIGNS IN PLACE	SQFT 17.00		
TOTAL BID				

STRUCTURAL DETAILS CHECKED *MAS*



"FK" LINE
(For profile, see sht. 4C)

"F" LINE
(For profile, see sht. 4D)

"L" LINE
(For profile, see sht. 4B)

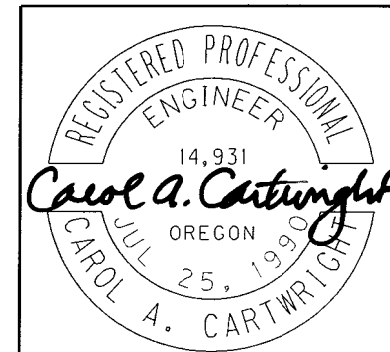
△ Revised 01-12-2009,
Added drainage for note 20

OREGON DEPARTMENT OF TRANSPORTATION

REGION 2 TECH CENTER

**I-5 @ KUEBLER INTERCHANGE
IMPROVEMENTS SEC.
PACIFIC HIGHWAY
MARION COUNTY**

Design Team Leader - Carol Cartwright
Designed By - John Lucas
Drafted By - Deborah Gentner-Day



RENEWS: 12-31-2009

GENERAL CONSTRUCTION

SHEET
NO.
4

STRUCTURAL DETAILS CHECKED *MAS*

① See sht. 3, note 1
Remove & reinstall extg. conc. shldr. barrier

② Sta. "L"482+17.0, Rt. To Sta. "Fk"8+03.4, Lt.
Const. precast conc. shldr. barrier - 151'

②A Connect to reinstalled barrier

②B Const. conc. barrier transition to bridge rail - 14.2'
Plug scuppers

(For details, see sht. 2B-3)
(See drg. no. RD520)

③ Sta. "Fk"8+27.0 To Sta. "Fk"9+48.5
Structure No. 20665

Const. structure - 121.5'

Rdwy. width - 28'

Reinf. panel at bridge ends
Const. retaining walls

(For drg. nos., see sht. 1A)

④ Reconst. swale/detention pond
(For details, see sht. GJ-1)

⑤ Sta. "L"482+17.0 To Sta. "L"482+29.5
Remove extg. conc. shldr. barrier - 12.5'

Const. conc. barrier trailing end terminal

⑤A Connect to extg. conc. shldr. barrier
(See drg. no. RD510)

⑥ Sta. "Fk"6+37.0 To Sta. "Fk"7+94.2
Const. precast conc. shldr. barrier - 151'

⑥A Const. conc. barrier trailing end terminal

⑥B Const. conc. barrier transition to bridge rail - 6.2'

(For details, see sht. 2B-3)

⑦ Sta. "Fk"9+75.4 To Sta. "Fk"22+00.8
Const. guardrail - 1,275' (type 2A)

Const. guardrail - 12.5' (type 3)

⑦A Const. guardrail transition to conc. bridge rail
(See drg. nos. RD400, RD405, RD410, RD415 & BR203)

⑧ Sta. "Fk"9+86.4 To Sta. "K"699+30.6
Const. guardrail - 1,300' (type 2A)

Const. guardrail - 12.5' (type 3)

⑧A Const. guardrail transition to conc. bridge rail

⑨ Sta. "Fk"6+45.75

Const. type "G-2" inlet

Connect to extg. 12" sew. pipe

(See drg. no. RD364)

⑩ Sta. "Fk"9+88.6 To Sta. "Fk"10+99.4

Const. type "G-2" inlet

Inst. 12" sew. pipe - 109.3'

5' depth

(See drg. nos. RD300, RD326, RD380, RD384 & RD386)

⑪ Sta. "Fk"9+87.0 To Sta. "Fk"9+83.1

Const. type "G-2MA" inlet

Inst. 12" sew. pipe - 22.5'

5' depth

Connect to extg. manhole

(See drg. nos. RD336 & RD364)

⑫ Sta. "Fk"10+99.4 To Sta. "Fk"12+00

Const. type "G-2" inlet

Inst. 12" sew. pipe - 99.0'

5' depth

⑬ Sta. "Fk"12+00 To Sta. "Fk"12+00

Const. type "G-2" inlet

Inst. 12" sew. pipe - 50.6'

5' depth

Inst. slope anchors

(See drg. no. RD330)

⑭ Sta. "Fk"12+00 To Sta. "Fk"14+22.7

Const. manhole, 24" dia.

Inst. 12" sew. pipe - 209'

5' depth

(See drg. nos. RD342, RD344 & RD356)

⑮ Sta. "Fk"14+22.7 To Sta. "Fk"14+22.7

Const. type "G-2" inlet

Inst. 12" sew. pipe - 57.7'

5' depth

Inst. slope anchors

⑯ Sta. "Fk"14+22.7 To Sta. "Fk"14+22.7

Const. manhole

Inst. 12" sew. pipe - 51.5'

5' depth

⑰ Const. P.C. Conc. drainage curb

(See drg. no. RD700)

⑱ Remove extg. double "CL-6" locked gate

Const. type "CL-6" fence

Connect to extg. fence

⑱A

Remove extg. fence

Reinstall double "CL-6" locked gate

Connect to extg. fence

(See drg. no. RD815)

⑲ Remove extg. type "CL-6" fence

Rebuild type "CL-6" fence



⑳ Sta. "Fk"7+03.8 To Sta. "Fk"7+50.8

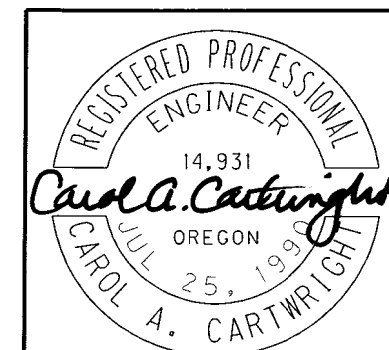
12" sew. pipe (in pl.)

Remove extg. inlet

Const. type "G-2MA" inlet

Extend - 46.5', 5' depth

⚠ Revised 01-12-2009,
Added note 20



RENEWS: 12-31-2009

OREGON DEPARTMENT OF TRANSPORTATION

REGION 2 TECH CENTER

**I-5 @ KUEBLER INTERCHANGE
IMPROVEMENTS SEC.
PACIFIC HIGHWAY
MARION COUNTY**

Design Team Leader - Carol Cartwright

Designed By - John Lucas

Drafted By - Deborah Gentner-Day

NOTES

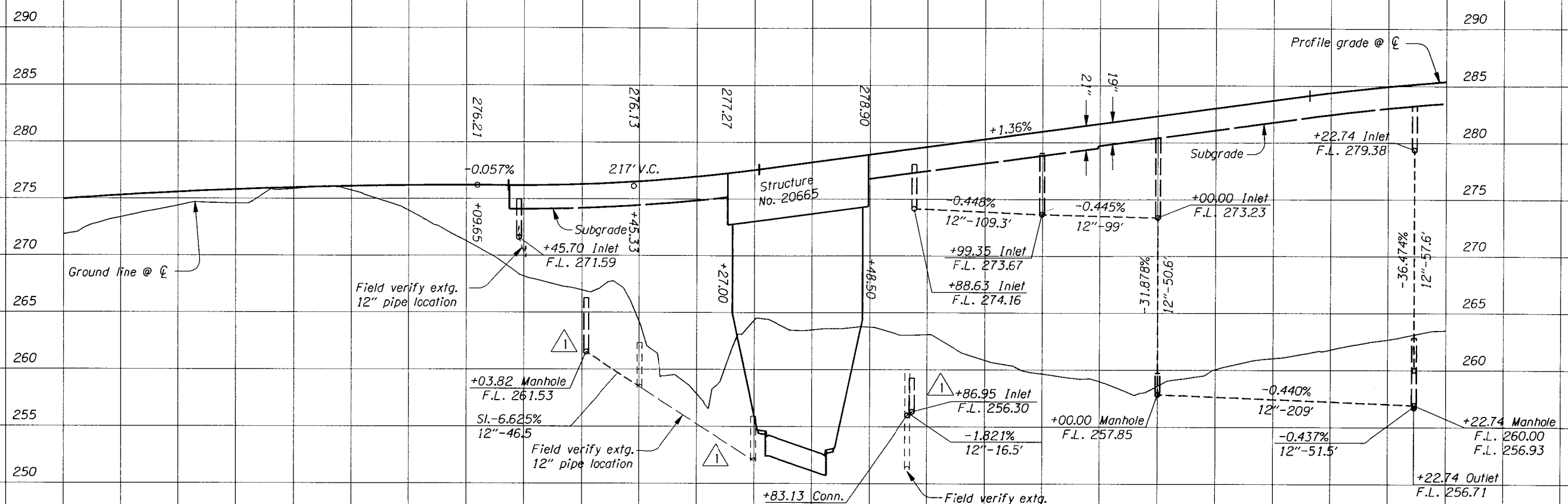
SHEET
NO.

4A

"FK" LINE

MAS

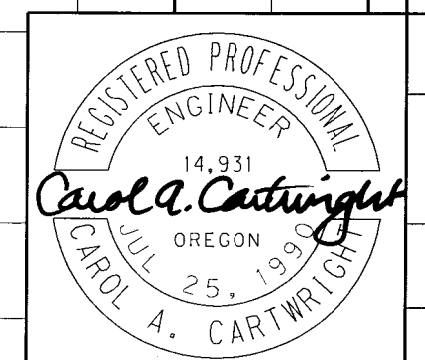
STRUCTURAL DETAILS CHECKED



Emb. in place - 205
 Stone emb. - 565

Emb. in place 19,575
 Stone emb. 4,095

⚠ Revised 01-12-2009,
 Changed station callout
 Added existing drainage
 Added new drainage



OREGON DEPARTMENT OF TRANSPORTATION

REGION 2 TECH CENTER

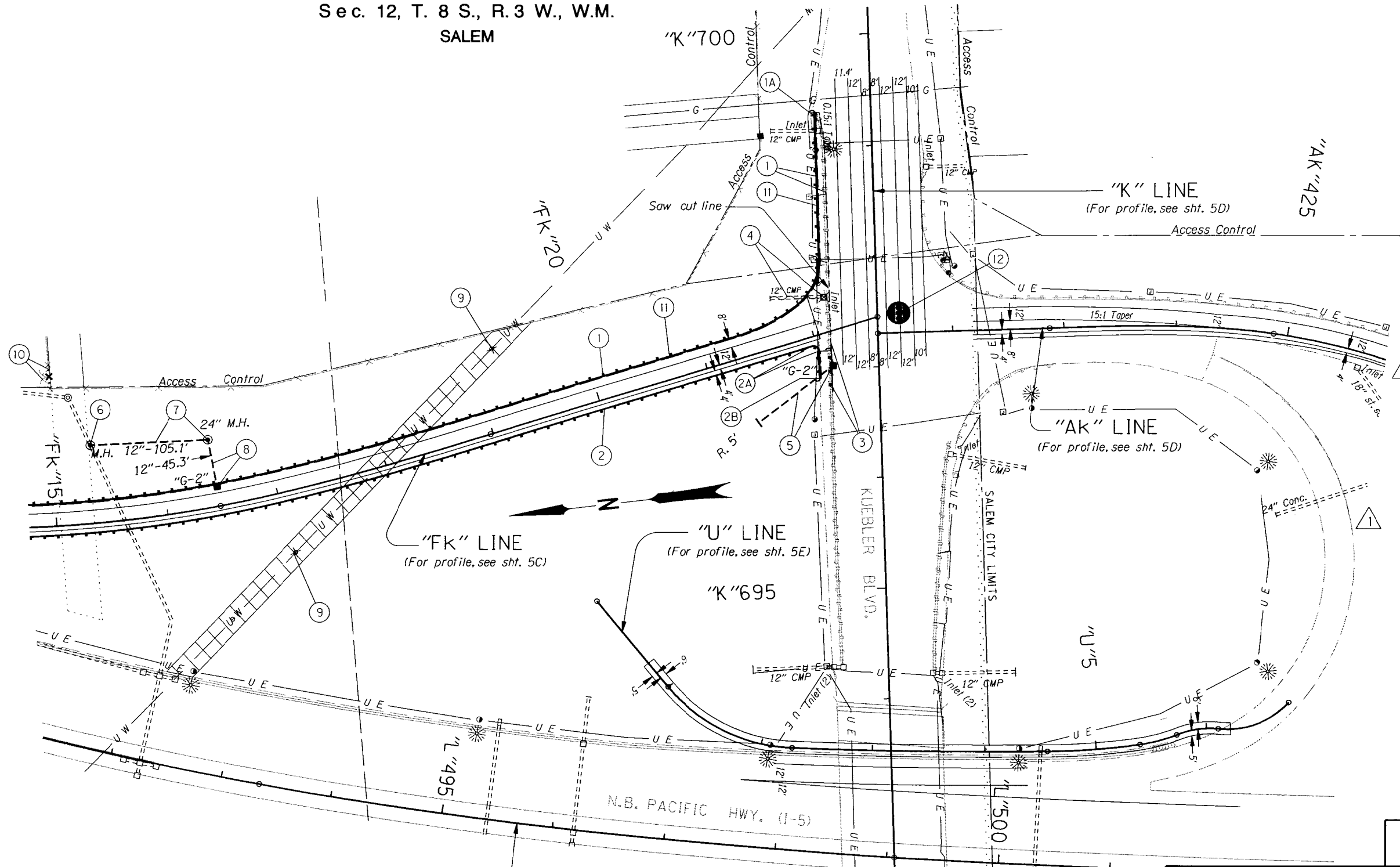
I-5 @ KUEBLER INTERCHANGE IMPROVEMENTS SEC.
 PACIFIC HIGHWAY
 MARION COUNTY

Design Team Leader - Carol Cartwright
 Designed By - John Lucas
 Drafted By - Deborah Gentner-Day

PROFILE

SHEET NO. 4C

RENEWS: 12-31-2009

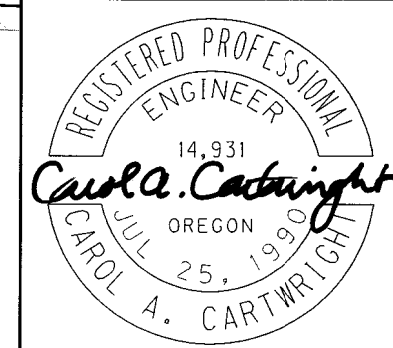


- ① See sht. 4A, note 8
Remove extg. guardrail - 150'
Const. guardrail
- ①A Const. guardrail terminal, non flared
Test level 3
(See drg. no. RD420)
- ② See sht. 4A, note 7
Const. guardrail
- ②A Const. anchor - 3 (type 1 mod.)
- ②B Inst. end piece (type B)
- ③ Sta. "K"696+78.5 To Sta. "K"697+70.9±
Remove extg. guardrail - 100'
Const. guardrail terminal, non-flared
Test level 3
Inst. shin protectors
Flare rate=0, W=1', E=0
(For details, see sht. 2B)
(See drg. no. RD420)
- ④ Sta. "K"697+65
Remove inlet
Plug & abandon extg. pipe
- ⑤ Sta. "K"697+02.4
Const. type "G-2" inlet
Inst. 12" sew. pipe - 86.5'
5' depth
Inst. slope anchors
- ⑥ Sta. "FK"15+36.6
Const. manhole
- ⑦ Sta. "FK"15+36.6 To Sta. "FK"16+47.6
Const. manhole, 24" dia.
Inst. 12" sew. pipe - 105.1'
5' depth
- ⑧ Sta. "FK"16+47.6 To Sta. "FK"16+47.6
Const. type "G-2" inlet
Inst. 12" sew. pipe - 45.3'
5' depth
Inst. slope anchors
- ⑨ Adjust water valve box - 2
- ⑩ See sht. 4A, Note 18
- ⑪ See sht. 4A, Note 17
Const. P.C. Conc. drainage curb
- ⑫ Remove extg. traffic signal
Inst. traffic signal
(For drg. nos., see sht. 1A)

△ Revised 01-12-2009,
Removed extg. guardrail

Restricted work area
Shown thus:
(For details, see sht. 2B)

Plug And Abandon Extg. Pipe Shown Thus:



RENEWS: 12-31-2009

OREGON DEPARTMENT OF TRANSPORTATION

REGION 2 TECH CENTER

**I-5 @ KUEBLER INTERCHANGE
IMPROVEMENTS SEC.
PACIFIC HIGHWAY
MARION COUNTY**

Design Team Leader - Carol Cartwright
Designed By - John Lucas
Drafted By - Deborah Gentner-Day

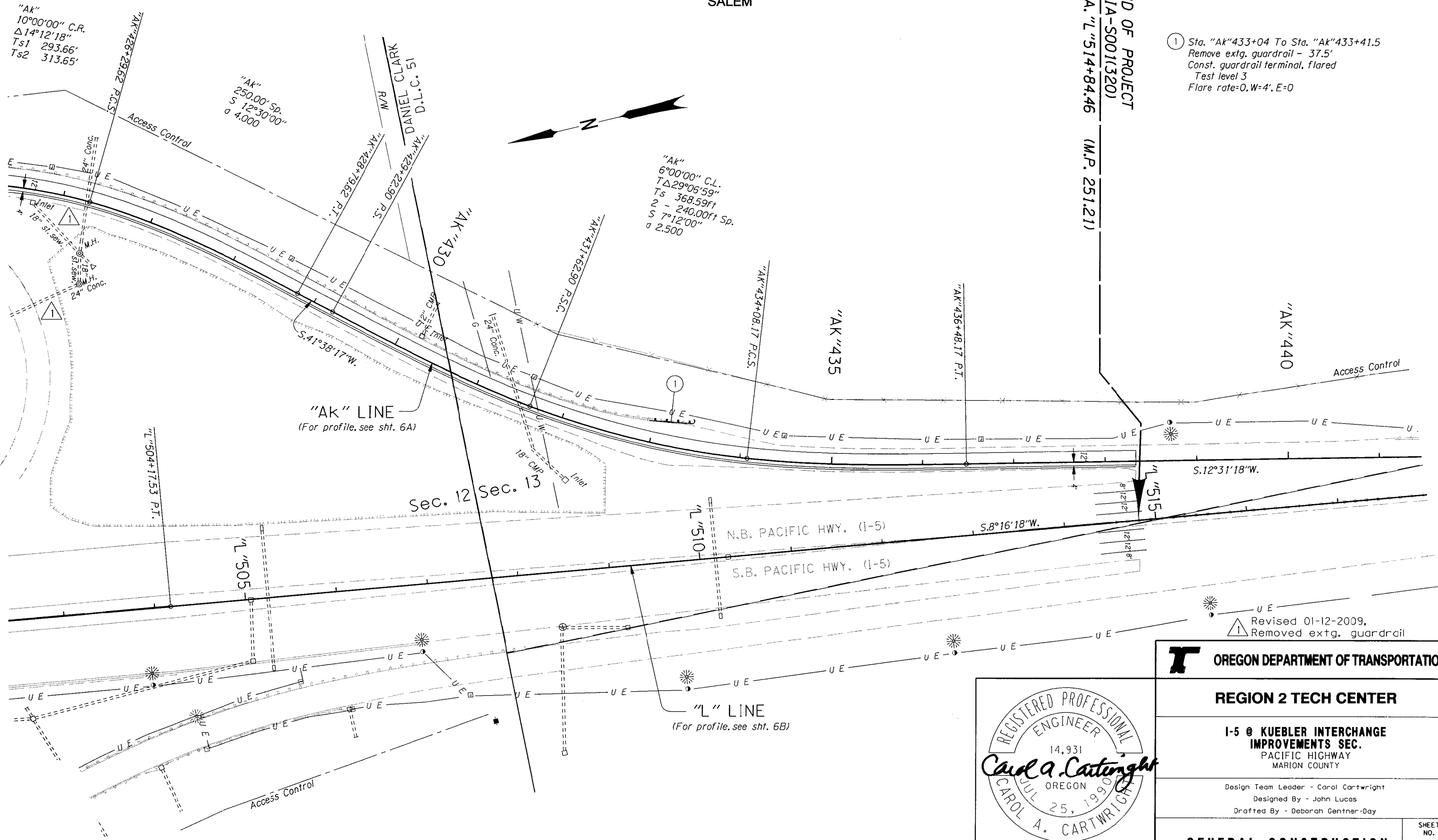
GENERAL CONSTRUCTION

SHEET NO.
5A

T. 8 S., R. 3 W., W.M.
SALEM

END OF PROJECT
OT1A-S001(320)
STA. "L" 514+84.46 (M.P. 251.21)

- ① Sta. "AK" 433+04 To Sta. "AK" 433+41.5
Remove extg. guardrail - 37.5'
Const. guardrail terminal, flared
Test level 3
Flare rate=0,W=4',E=0



REGISTERED PROFESSIONAL
ENGINEER
14,931
Carol A. Cartwright
OREGON
JUL 25, 1996
CAROL A. CARTWRIGHT

RENEWS: 12-31-2009

OREGON DEPARTMENT OF TRANSPORTATION

REGION 2 TECH CENTER

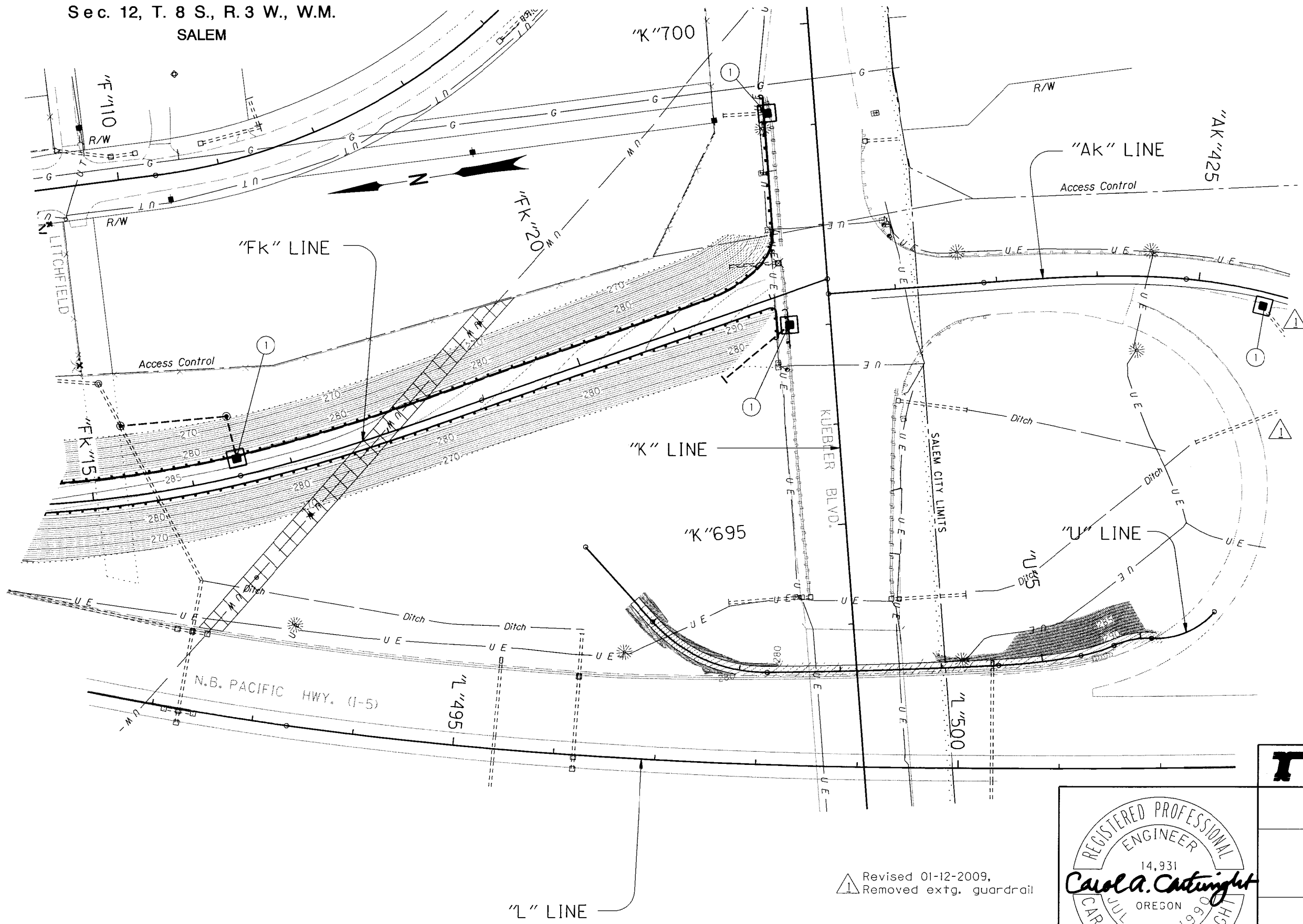
I-5 @ KUEBLER INTERCHANGE IMPROVEMENTS SEC.
PACIFIC HIGHWAY
MARION COUNTY

Design Team Leader - Carol Cartwright
Designed By - John Lucas
Drafted By - Deborah Gentner-Day

GENERAL CONSTRUCTION

SHEET NO. **6**

① Const. inlet protection
(Type 1, 2, 3)



- LEGEND**
- Fill slope
 - Cut slope
 - Inlet Protection
 - ▨ Construction Entrance
 - ▧ Restricted work area (For details, see sht. 2B)

OREGON DEPARTMENT OF TRANSPORTATION

REGION 2 TECH CENTER

I-5 @ KUEBLER INTERCHANGE IMPROVEMENTS SEC.
PACIFIC HIGHWAY
MARION COUNTY

Design Team Leader - Carol Cartwright
Designed By - John Lucas
Drafted By - Deborah Gentrer-Day

EROSION CONTROL PLAN

SHEET NO.
GA-3



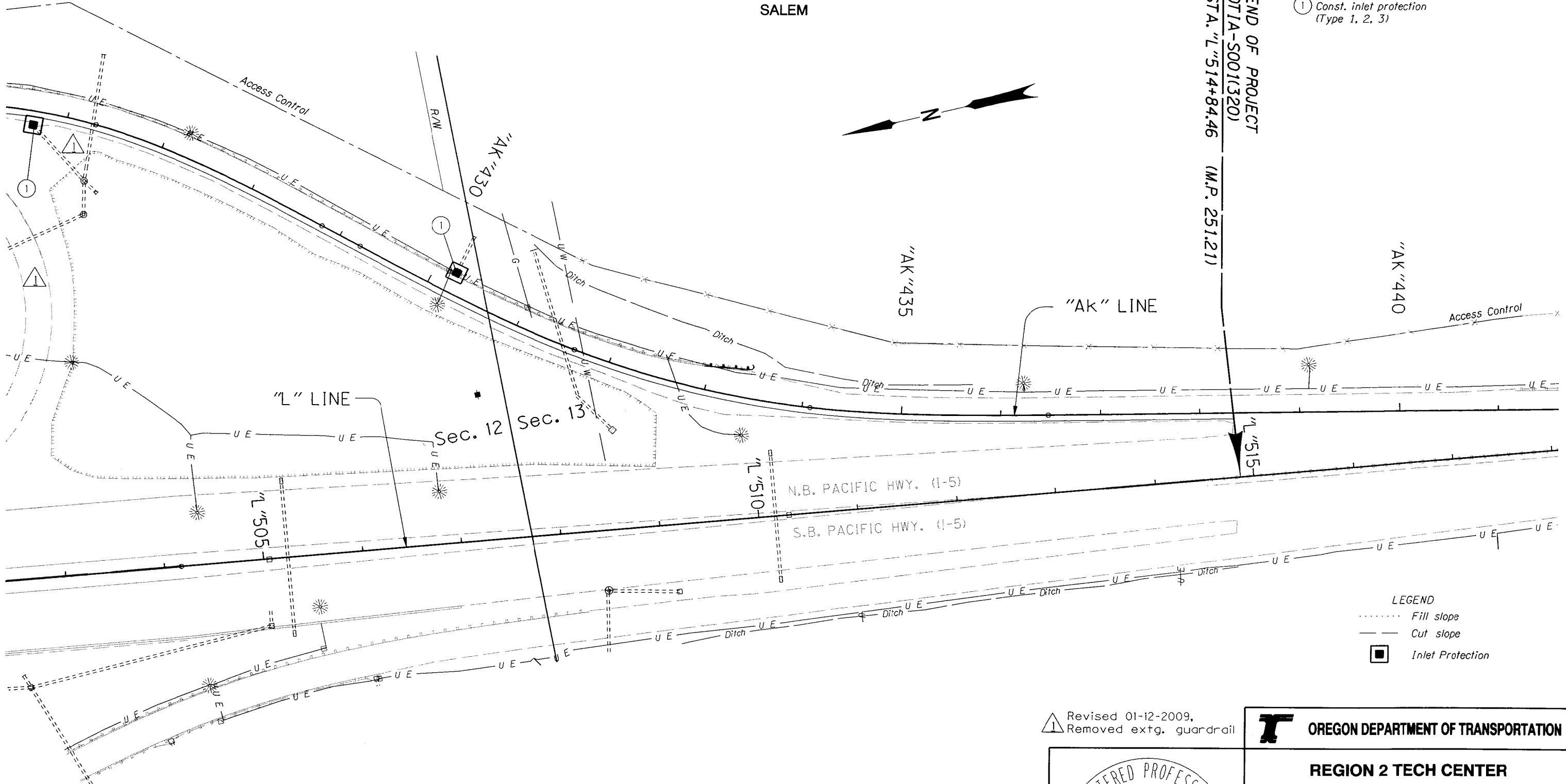
RENEWS: 12-31-2009

T. 8 S., R. 3 W., W.M.
SALEM

42V-23

① Const. inlet protection
(Type 1, 2, 3)

END OF PROJECT
OT1A-S001(320)
STA. "L" 514+84.46 (M.P. 251.21)

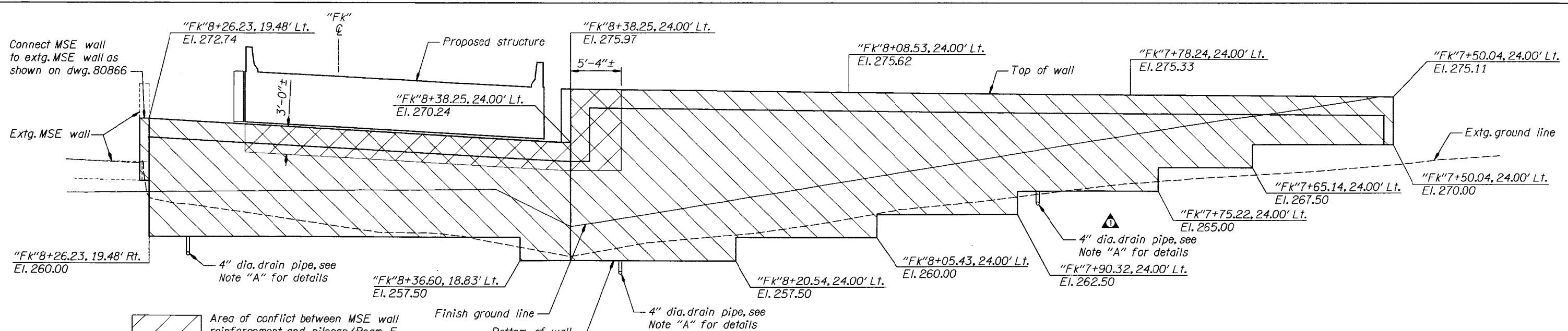


LEGEND
 Fill slope
 --- Cut slope
 ◻ Inlet Protection

⚠ Revised 01-12-2009,
Removed extg. guardrail



OREGON DEPARTMENT OF TRANSPORTATION	
REGION 2 TECH CENTER	
I-5 @ KUEBLER INTERCHANGE IMPROVEMENTS SEC. PACIFIC HIGHWAY MARION COUNTY	
Design Team Leader - Carol Cartwright Designed By - John Lucas Drafted By - Deborah Gentner-Day	
EROSION CONTROL PLAN	SHEET NO. GA-4



BENT 1 MSE WALL DEVELOPED ELEVATION
(Outside face of wall looking back on station)

NOTE "A"
Connect 4" dia. solid drain pipe to perforated pipe with a T-connection at back of wall (four locations) and run pipe to the following locations:
Bent 1 MSE Wall:
Sta. "FK"7+94.00, 38' Lt., El. 263.0
Sta. "FK"8+45.50, 16' Rt., El. 256.0
Sta. "FK"8+50.50, 26' Lt., El. 256.0
Bent 2 MSE Wall:
Sta. "FK"9+24.61, 18' Rt., El. 258.0
Sta. "FK"9+48.78, 43' Lt., El. 258.0
Provide metal screens at pipe outlets to prevent debris and rodent entry into pipe.

MSE Wall Notes:
Design wall in conformance with the requirements of AASHTO Standard Specifications For Highway Bridges (17th Edition) and ODOT Retaining Structures Manual utilizing only inextensible reinforcement.
For internal stability design calculations, consider the Loading Conditions on dwg. 80866, a site peak bedrock acceleration (A) of 0.16 and 0.22 for 500-year and 1000-year return period earthquakes (respectively) and use the following soil property values:
Angle of internal friction of granular backfill in structure = 34°
Density of granular backfill in structure = 130 pcf
Cohesion of granular backfill in structure = 0

Provide a minimum service life of 100 years for all components. Use the following rates of loss for galvanized steel reinforcements:
Galvanizing loss = 15 um/year for first 2 years
Galvanizing loss = 4 um/year for subsequent years
Carbon steel loss = 12 um/year after zinc depletion

External stability has been analyzed and B = 0.85H provides acceptable safety factors for sliding, overturning, and bearing capacity.

Provide Class 3600 - 1" or 3/4" concrete for precast concrete facing panels and MSE wall coping.

Provide reinforcing conforming to ASTM A706M or ASTM A615M, Grade 420.

Bar Size	4	5	6	7	8	9	10	11
*Uncoated Splice Length	1'-4"	1'-8"	2'-0"	2'-8"	3'-6"	4'-4"	5'-7"	6'-9"

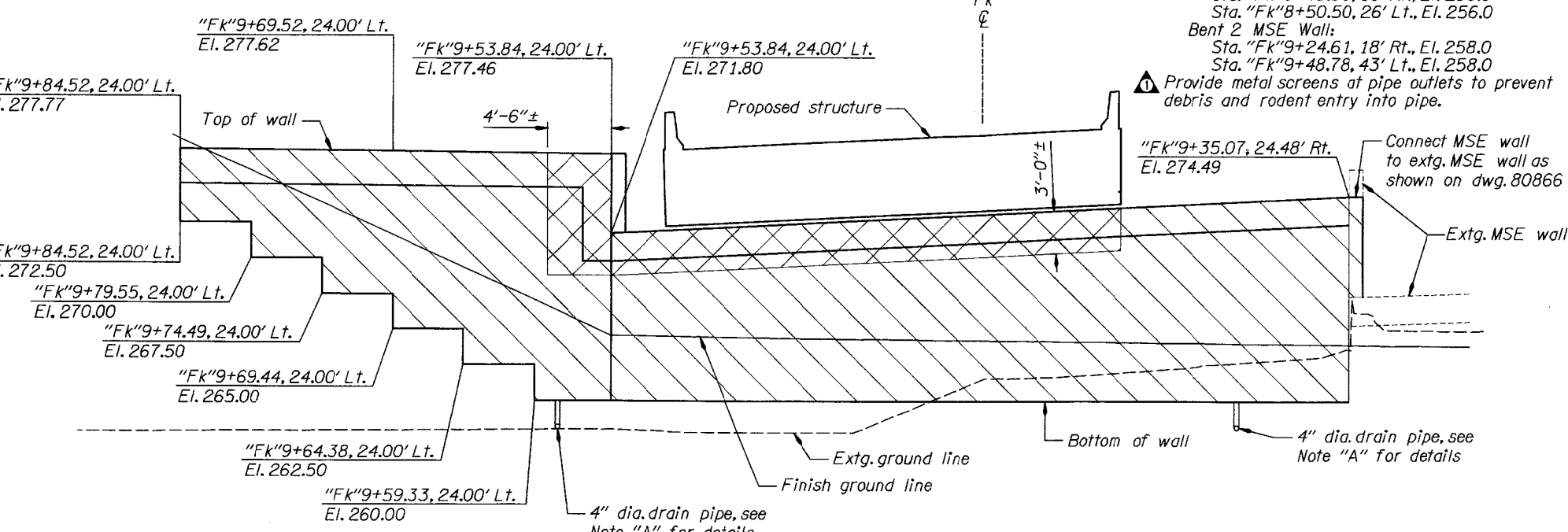
*Increase length 40% for bars with more than 12" of fresh concrete below bar.

Provide "Ashlar Stone" architectural finish for MSE wall face panels. Extend architectural finish from top of walls to 2'-0" below finish grade.

Construct MSE wall facing vertical (zero batter).

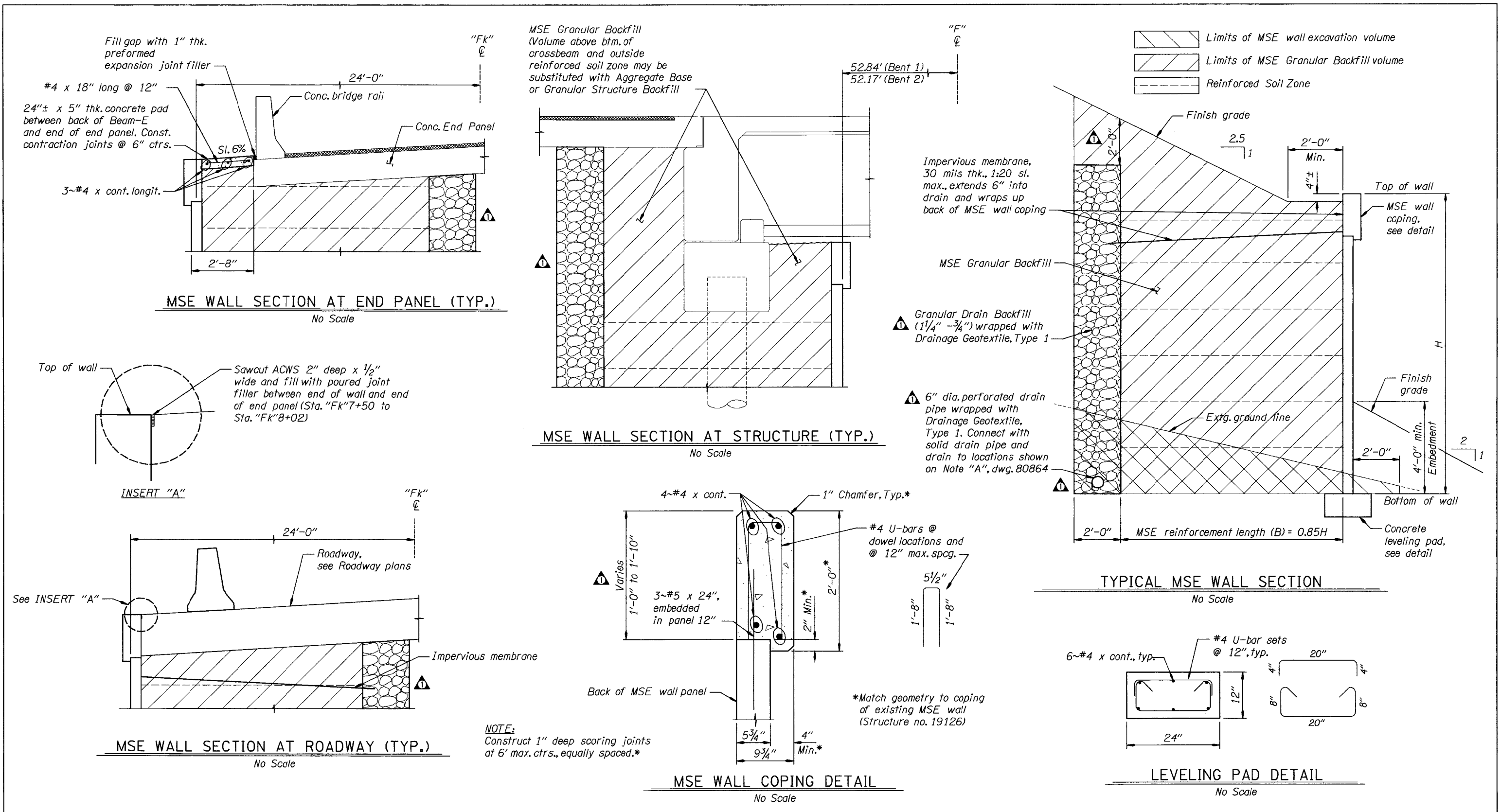
Allow for up to 4" of differential wall settlement between locations of tallest and shortest wall height (a minimum differential wall settlement ratio of 1/90). Indicate in the working drawings how the anticipated settlement will be incorporated into the wall fabrication and/or construction. Estimated wall settlement up to 6".

Consider the obstruction of pilecap and Beam-E in the wall design as required by AASHTO LRFD Bridge Design Specifications (4th Edition), Section 11.10.10.4.



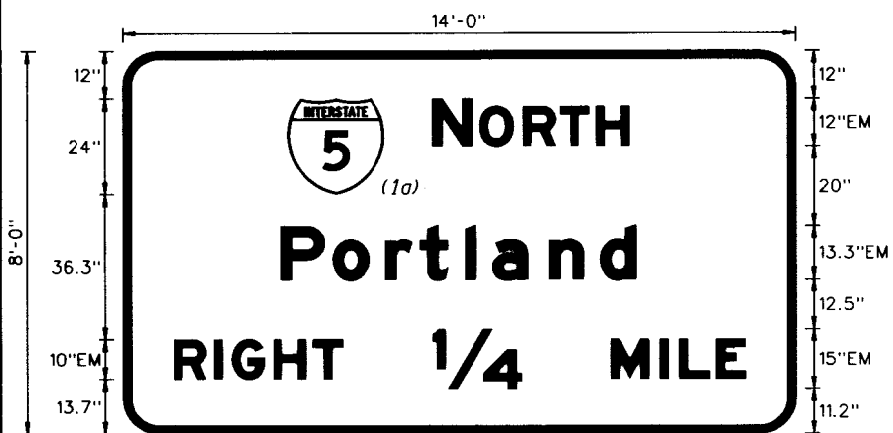
BENT 2 MSE WALL DEVELOPED ELEVATION
(Outside face of wall looking ahead on station)

DATE 1-13-09	REVISION Detail revised, notes added/ revised	BY MAS	DRAFTER: Sandra Gish			STRUCTURE NO. 20665	KUEBLER BLVD. RAMP TO HWY. 1 NB OVER FAIRVIEW IND. DR. S.E. I-5 @ KUEBLER INTERCHANGE IMPROVEMENTS SEC. PACIFIC HWY. (M.P. C251.78N) MARION COUNTY	SHEET 14 OF 17
			DESIGNER: Matthew Stucker, P.E.			DATE NOV 2008		DRAWING NO. 80864
ACCOMPANIED BY DWGS. See dwg. 80851.			CHECKER: Mark Lusby, P.E.			CALC. BOOK 6053	MSE WALL DEVELOPED ELEVATION	80864
			REVIEWER: Al Heyn, P.E.			REGION 2 TECH CENTER		

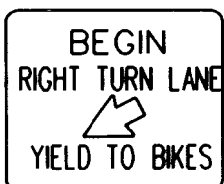


DATE	REVISION	BY	DRAFTER: Sandra Gish		STRUCTURE NO.	KUEBLER BLVD. RAMP TO HWY. 1 NB OVER FAIRVIEW IND. DR. S.E. I-5 @ KUEBLER INTERCHANGE IMPROVEMENTS SEC. PACIFIC HWY. (M.P. C251.78N) MARION COUNTY	SHEET
	1-13-09	Details revised, notes added/revised	MAS		DESIGNER: Matthew Stucker, P.E.		20665
ACCOMPANIED BY DWGS. See dwg. 80851.			CHECKER: Mark Lusby, P.E.		DATE	MSE WALL SECTIONS AND DETAILS	OF
			REVIEWER: Al Heyn, P.E.		NOV. 2008		17
				REGION 2 TECH CENTER	CALC. BOOK		DRAWING NO.
					6053		80865

SIGN DETAILS



Sign No. 1



Sign No. 6



Sign No. 9



Sign No. 10



Sign No. 11



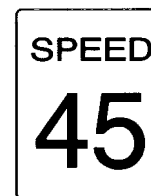
Sign No. 12



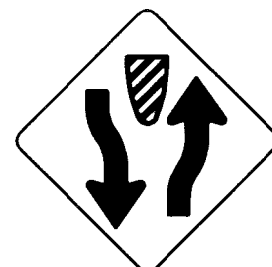
Sign No. 2



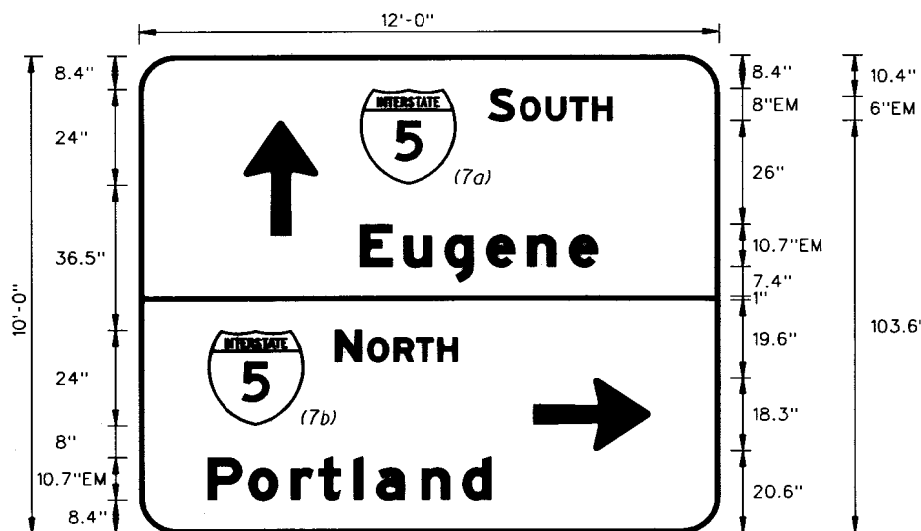
Sign No. 3



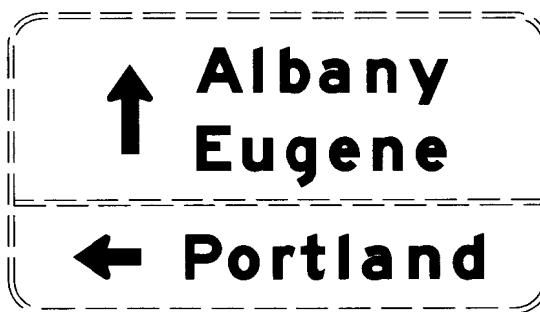
Sign No. 4



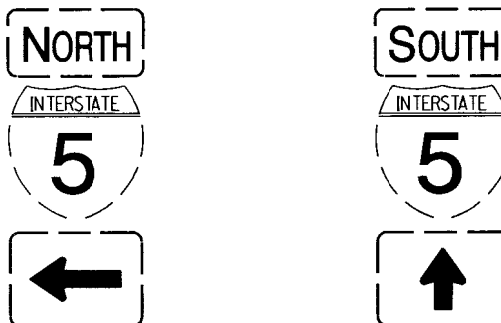
Sign No. 5



Sign No. 7



Sign No. 8



NOTE: Signs with broken borders are existing signs.

12-18-08: Revised sign dimensions.



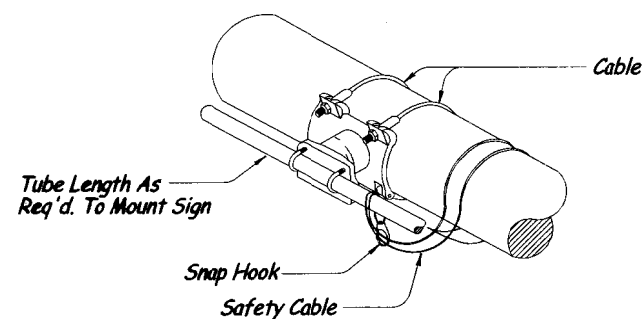
OREGON DEPARTMENT OF TRANSPORTATION
REGION 2 TRAFFIC UNIT

I-5 @ KUEBLER INTERCHANGE IMPROVEMENTS
PACIFIC HIGHWAY
MARION COUNTY

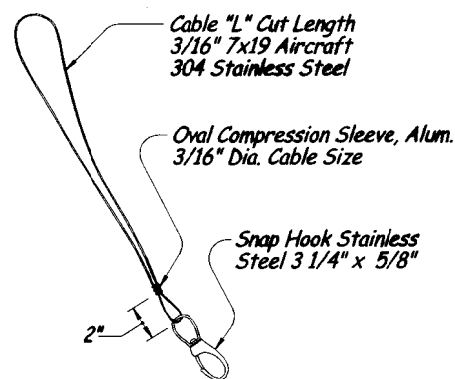
DESIGNED BY: John Meranda
REVIEWED BY: Jason Motley
DRAWN BY: John Meranda
FC: 001 MP: 251.46-251.89

PERMANENT SIGNING

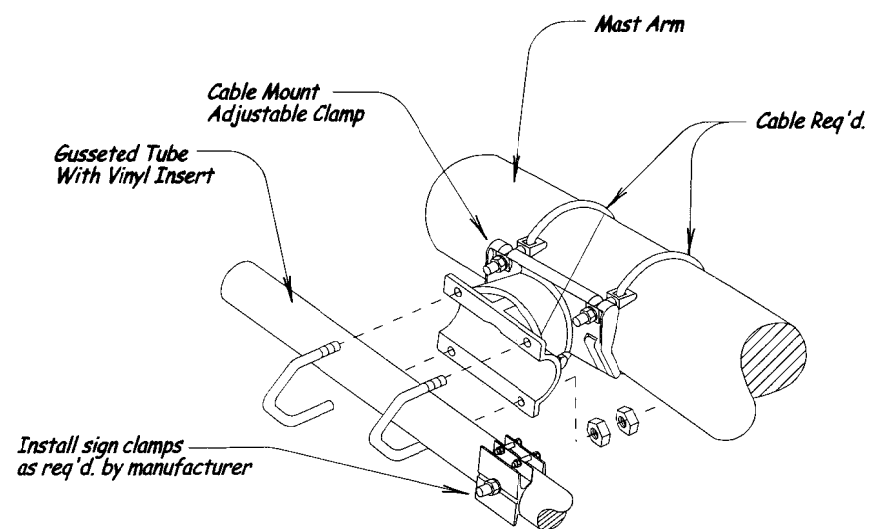
T.R.S. DWG. NO. S-10653



SAFETY CABLE INSTALLATION

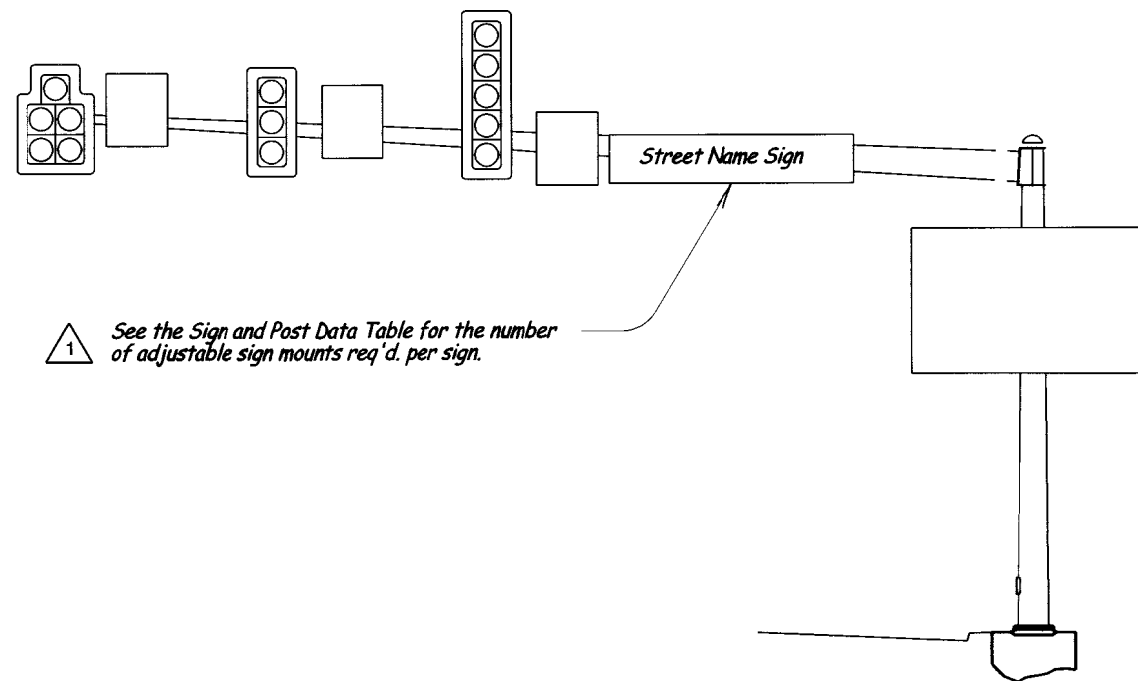


SAFETY CABLE



MAST ARM INSTALLATION DETAIL OF ADJUSTABLE SIGN MOUNT FOR OVERHEAD STREET NAME SIGN

12-18-08: Revised legend descriptions.

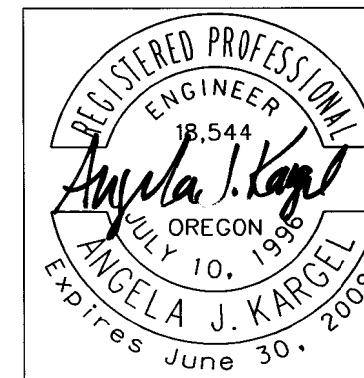


1 See the Sign and Post Data Table for the number of adjustable sign mounts req'd. per sign.

GENERAL MOUNTING DETAIL FOR OVERHEAD STREET NAME SIGN

Note to designers:

- 1.) Suggested maximum sign face of 16 square feet per sign mount. Multiple sign mounts may be needed for long signs.
- 2.) Specify the number of sign mounts per sign in the Sign and Post Data Table.



OREGON DEPARTMENT OF TRANSPORTATION
REGION 2 TRAFFIC UNIT

I-5 @ KUEBLER INTERCHANGE IMPROVEMENTS
PACIFIC HIGHWAY
MARION COUNTY

DESIGNED BY: John Meranda
REVIEWED BY: Jason Molley
DRAWN BY: John Meranda
FC: 001 MP: 251.46-251.89

PERMANENT SIGNING

T.R.S. DWG. NO. **S-10655**

