



Oregon

Theodore R. Kulongoski, Governor


Department of Transportation
Technical Services
Roadway Engineering Section
355 Capitol Street NE, Room 222
Salem, OR 97301-3871
Telephone 503-986-3714
FAX 503-986-3749

DATE: May 19, 2009


Addenda No. 1

TO: PLAN HOLDERS

PREPARED BY:


David Stitz
Sr. Specification Writer
David Evans and Associates, Inc.

APPROVED BY:


Michael W. Reynolds, P.E.
Project Manager
David Evans and Associates, Inc.

SUBJECT: I-84: The Dalles-Fifteen Mile Cr IM-B226 Section
Columbia River Highway
Wasco County
Grading, Paving & Barrier Project
(Bids to be opened and read May 28, 2009)

The following changes are made to the Project Bid Booklet:

1. DESCRIPTION OF WORK page - The paragraph under COMPLETION TIME LIMIT is replaced with the following:

There are two Contract Times on this Project as follows:

- (1) Complete all Work to be done under the Contract for Stages I, II and III from Station "L" 2471+90 to Station "L" 2496+00 not later than August 31, 2009.
- (2) Complete all Work to be done under the Contract not later than December 31, 2009.

2. The following changes are made to the Project Bid Items:

a. Quantity changes:

<u>Number</u>	<u>Item</u>	<u>Quantity</u>	
		<u>Original</u>	<u>New</u>
0040	TEMPORARY SIGNS	890.00	650.00
0050	TEMPORARY BARRICADES, TYPE III	100.00	50.00
0080	TEMPORARY IMPACT ATTENUATOR, TRUCK MOUNTED	4.00	2.00
0090	REPAIR TEMPORARY IMPACT ATTENUATOR, TRUCK MOUNTED	2.00	6.00
0100	TEMPORARY PLASTIC DRUMS	294.00	100.00

b. Added item:

<u>Number</u>	<u>Item</u>	<u>Unit</u>	<u>Quantity</u>
0550	REMOVAL OF MEDIAN BARRIER	LS	ALL

Make a copy of and use the new attached Bid Sheets. A Bid **not** including these new Bid Sheets **will be rejected as non-responsive**.

The following changes are made to the Project Special Provisions:

- DESCRIPTION OF WORK page - The paragraph under COMPLETION TIME LIMIT is replaced with the following:

There are two Contract Times on this Project as follows:

- Complete all Work to be done under the Contract for Stages I, II and III from Station "L" 2471+90 to Station "L" 2496+00 not later than August 31, 2009.
 - Complete all Work to be done under the Contract not later than December 31, 2009.
- Subsection 00170.65(b) When Federal Funds Are Involved - This entire subsection is deleted.
- Subsection 00170.70(a) Insurance Coverages - This subsection is replaced with the following subsection:

00170.70(a) Insurance Coverages - The following insurance coverages and dollar amounts are required pursuant to this subsection:

Insurance Coverages	Combined Single Limit per Occurrence	Annual Aggregate Limit
Commercial General Liability	\$2,000,000	\$5,000,000
Commercial Automobile Liability	\$1,000,000	(aggregate limit not required)

4. Subsection 00180.40(c) Specific Limitations - The following paragraph is added prior to the paragraph that begins "Be aware of and subject to...":

Do not start Stage IV east of Station "L" 2471+90 until after September 8, 2009, unless approved by the Engineer.

5. Subsection 00180.50(h) Contract Time - This subsection is replaced with the following subsection:

00180.50(h) Contract Time - There are two Contract Times on this Project as follows:

(1) Complete all Work to be done under the Contract for Stages I, II and III from Station "L" 2471+90 to Station "L" 2496+00 not later than August 31, 2009.

(2) Complete all Work to be done under the Contract not later than December 31, 2009.

6. Subsection 00180.85(b) Liquidated Damages - This subsection is replaced with the following subsection:

00180.85(b) Liquidated Damages - Add the following paragraphs:

There are two daily amounts of liquidated damages on this Project as follows:

Liquidated damages for failure to complete the Work on time required by 00180.50(h-1) will be \$ 800 per Calendar Day *. Liquidated damages for failure to complete the Work on time required by 00180.50(h-2) will be \$ 1,200 per Calendar Day *. If liquidated damages should become payable concurrently under the combination of 00180.50(h-1) and (h-2), liquidated damages will be \$ 1,200 per Calendar Day *.

* Calendar Day amounts are applicable when the Contract time is expressed on the Calendar Day or fixed date basis.

7. Subsection 00220.40(e) Lane Restrictions - The following paragraph is added after the paragraph that begins "In addition to the above Weekday...":

The Contractor shall also consider and evaluate increased traffic volumes at certain times of the year, and work with the Engineer to control traffic in accordance with 00220.02 Public Safety and Mobility.

8. Subsection 00310.80 Measurement - The paragraph that begins with the words "The estimated quantity..." is replaced with the following:

The estimated quantity for removal of median barrier is 20,135 feet.

The following changes are made to the Project Plans:

1. Plan sheets 2C, 2C-5, 2C-8, 2C-12, 2C-13, 2C-16, 2C-17 and 2C-20 are replaced with revised plan sheets 2C, 2C-5, 2C-8, 2C-12, 2C-13, 2C-16, 2C-17 and 2C-20.

These changes will be included in the Contract for this Project. It is understood that your Bid will be submitted accordingly.

Make copies of the new Bid Sheets to replace the Special Provisions Bid Schedule Sheets.

dajs:

Attachments: New Bid Sheets
Revised Plan Sheets

BID SCHEDULE

CONTRACT ID: 14039

PROJECT: I-84: THE DALLES-FIFTEEN MILE CR
IM-B226

PROJECT KEY: 16320

ADDENDUM NUMBER: 1

ITEM NO	ITEM DESCRIPTION	QUANTITY AND UNITS	UNIT PRICE (IN FIGURES)	BID AMOUNT (IN FIGURES)
---------	------------------	--------------------	-------------------------	-------------------------

SECTION 0001 TEMPORARY FEATURES AND APPURTENANCES

0010	0100-0101000T TRAINING	2,790.00 HOUR	20.00	55800.00
0020	0210-0100000A MOBILIZATION	ALL LS		
0030	0225-0100000A TEMPORARY PROTECTION AND DIRECTION OF TRAFFIC	ALL LS		
0040	0225-0102000J TEMPORARY SIGNS	650.00 SQFT		
0050	0225-0105000E TEMPORARY BARRICADES, TYPE III	50.00 EACH		
0060	0225-0126000F TEMPORARY CONCRETE BARRIER, REFLECTORIZED	20,000.00 FOOT		
0070	0225-0132000F MOVING TEMPORARY CONCRETE BARRIER	20,000.00 FOOT		
0080	0225-0138000E TEMPORARY IMPACT ATTENUATOR, TRUCK MOUNTED	2.00 EACH		
0090	0225-0141400E REPAIR TEMPORARY IMPACT ATTENUATOR, TRUCK MOUNTED	6.00 EACH		
0100	0225-0145000E TEMPORARY PLASTIC DRUMS	100.00 EACH		
0110	0225-0149000E TEMPORARY FLEXIBLE PAVEMENT MARKERS	6,000.00 EACH		

BID SCHEDULE

CONTRACT ID: 14039

PROJECT: I-84: THE DALLES-FIFTEEN MILE CR
IM-B226

PROJECT KEY: 16320

ADDENDUM NUMBER: 1

ITEM NO	ITEM DESCRIPTION	QUANTITY AND UNITS	UNIT PRICE (IN FIGURES)	BID AMOUNT (IN FIGURES)
0120	0225-0150000F TEMPORARY REMOVABLE TAPE	3,000.00 FOOT		
0130	0225-0153000F TEMPORARY STRIPING	225,000.00 FOOT		
0140	0225-0154000F STRIPE REMOVAL	300,000.00 FOOT		
0150	0225-0162000E SEQUENTIAL ARROW SIGNS	2.00 EACH		
0160	0225-0164000E PORTABLE CHANGEABLE MESSAGE SIGNS	3.00 EACH		
0170	0225-0168000T FLAGGERS	600.00 HOUR		
0180	0225-0168100T FLAGGER STATION LIGHTING	600.00 HOUR		
0190	0225-9Z90000E TEMPORARY CONCRETE BARRIER CONNECTION	4.00 EACH		
0200	0280-0100000A EROSION CONTROL	ALL LS		
0210	0280-0101000J PLASTIC SHEETING	31.00 SQYD		
0220	0280-0112000F SEDIMENT FENCE, SUPPORTED	100.00 FOOT		
0230	0280-0114000E INLET PROTECTION	4.00 EACH		
0240	0280-9Z90000E BIOFILTER BAGS	10.00 EACH		

BID SCHEDULE

CONTRACT ID: 14039

PROJECT: I-84: THE DALLES-FIFTEEN MILE CR
IM-B226

PROJECT KEY: 16320

ADDENDUM NUMBER: 1

ITEM NO	ITEM DESCRIPTION	QUANTITY AND UNITS	UNIT PRICE (IN FIGURES)	BID AMOUNT (IN FIGURES)
0250	0280-9Z90000E EMPTY SAND BAGS	EACH 50.00		
0260	0280-9Z90000E STRAW BALES	EACH 5.00		
0270	0280-9Z90000M HAZARDOUS MATERIAL DISPOSAL - PAINT WASTE	TON 0.10		
0280	0290-0100000A POLLUTION CONTROL PLAN	LS ALL		
0290	0290-9Z90000A RE-USE AND RECYCLING PLAN	LS ALL		

SECTION 0002 ROADWORK

0300	0305-0100000A CONSTRUCTION SURVEY WORK	LS ALL		
0310	0310-0106000A REMOVAL OF STRUCTURES AND OBSTRUCTIONS	LS ALL		
0320	0310-0119000F ASPHALT PAVEMENT SAW CUTTING	FOOT 930.00		
0330	0330-0105000K GENERAL EXCAVATION	CUYD 876.00		
0340	0331-0109000J 18 INCH SUBGRADE STABILIZATION	SQYD 350.00		
0350	0350-0105000J SUBGRADE GEOTEXTILE	SQYD 1,752.00		

SECTION 0003 BASES

BID SCHEDULE

CONTRACT ID: 14039

PROJECT: I-84: THE DALLES-FIFTEEN MILE CR
IM-B226

PROJECT KEY: 16320

ADDENDUM NUMBER: 1

ITEM NO	ITEM DESCRIPTION	QUANTITY AND UNITS	UNIT PRICE (IN FIGURES)	BID AMOUNT (IN FIGURES)
0360	0610-0103000A RECONDITIONING EXISTING ROADWAY	LS	ALL	
0370	0620-0120000J COLD PLANE PAVEMENT REMOVAL, 2 INCHES DEEP	SQYD	1,247.00	
0380	0620-0123000J COLD PLANE PAVEMENT REMOVAL, 4 INCHES DEEP	SQYD	86,780.00	
0390	0641-0115000M 1 INCH - 0 AGGREGATE BASE	TON	2,119.00	

SECTION 0004 WEARING SURFACES

0400	0730-0100000M EMULSIFIED ASPHALT FOR TACK COAT	TON	32.00	
0410	0745-0422000M LEVEL 4, 1/2 INCH DENSE LIME TREATED HMA	TON	22,725.00	
0420	0745-0642000M PG 70-28 ER ASPHALT IN HMA	TON	1,365.00	
0430	0748-0110000J 18 INCH ASPHALT CONCRETE PAVEMENT REPAIR	SQYD	250.00	
0440	0758-0203000J CONCRETE PAVEMENT SPALL REPAIR	SQYD	100.00	
0450	0758-9Z90000J JOINTED REINFORCED CONCRETE PAVEMENT REPAIR	SQYD	10,605.00	

SECTION 0005 PERMANENT TRAFFIC SAFETY AND GUIDANCE DEVICES

0460	0810-0107000F GUARDRAIL, TYPE 3	FOOT	12.50	
------	------------------------------------	------	-------	--

BID SCHEDULE

CONTRACT ID: 14039
PROJECT KEY: 16320

PROJECT: I-84: THE DALLES-FIFTEEN MILE CR
IM-B226
ADDENDUM NUMBER: 1

ITEM NO	ITEM DESCRIPTION	QUANTITY AND UNITS	UNIT PRICE (IN FIGURES)	BID AMOUNT (IN FIGURES)
0470	0810-0126000E GUARDRAIL TRANSITION	EACH 1.00		
0480	0810-0128000E GUARDRAIL CONNECTIONS	EACH 1.00		
0490	0820-0100000F CONCRETE BARRIER	FOOT 20,135.00		
0500	0840-0105000E DELINEATORS, TYPE 5	EACH 385.00		
0510	0857-0101000L CONTINUOUS RUMBLE STRIPS	MILE 5.75		
0520	0860-0200000F LONGITUDINAL PAVEMENT MARKINGS - PAINT	FOOT 116,900.00		
0530	0867-0145000J PAVEMENT BAR, TYPE B	SQFT 275.00		

SECTION 0006 RIGHT-OF-WAY DEVELOPMENT AND CONTROL

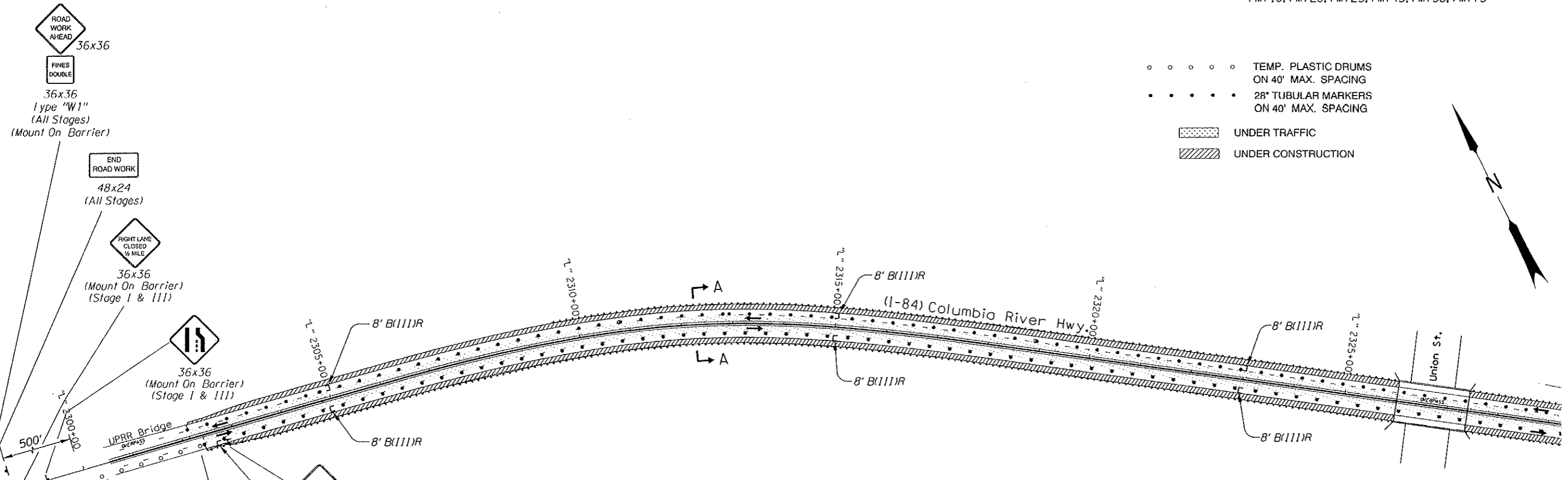
0540	1030-0109000R PERMANENT SEEDING, MIX NO. 1	ACRE 0.50		
------	---	-----------	--	--

SECTION 0007 ADDED BID ITEMS

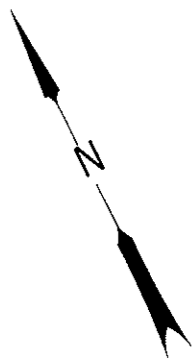
0550	0310-0108000A REMOVAL OF MEDIAN BARRIER	LS ALL		
TOTAL BID				

STAGE I

To Be Accompanied By Drg. Nos. RD205, RD500, TM204, TM500, TM503, TM670, TM671, TM676, TM681, TM685, TM700, TM705, TM710, TM720, TM725, TM745, TM750, TM775

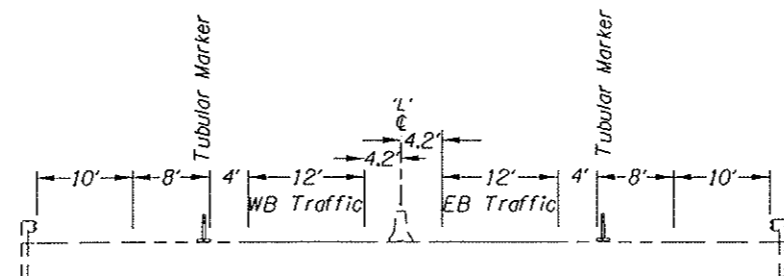


- ○ ○ ○ ○ TEMP. PLASTIC DRUMS ON 40' MAX. SPACING
- ● ● ● ● 28" TUBULAR MARKERS ON 40' MAX. SPACING
- UNDER TRAFFIC
- UNDER CONSTRUCTION

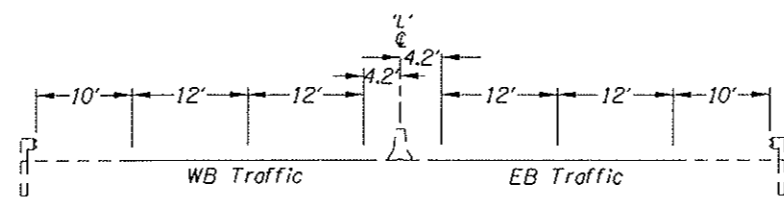


Revised	DATE	APPROVED	REVISION
Δ	05/09	K.R.R.	Revise Section Text

- Notes:
1. Cover Or Remove All Signs That Conflict With Temporary Signs And Staging As Directed By The Engineer.
 2. All Dimensions Are Shown In Inches Unless Otherwise Noted.
 3. All Signs Are Type "04" Unless Shown Otherwise.



SECTION A-A



SECTION A-A (HOLIDAY TRAFFIC)

- IMMEDIATE GRADING LIMITS
- FINAL GRADING LIMITS
- UNDER TRAFFIC
- EXISTING GROUND
- TOP OF STAGE, TEMP. OR FINAL SURFACING

REGISTERED PROFESSIONAL ENGINEER
 12.197
 OREGON
 JULY 15, 1983
 KEITH R. RUDISIL
 EXPIRES 12/31/10

OREGON DEPARTMENT OF TRANSPORTATION

DAVID EVANS AND ASSOCIATES INC.
 2100 Southwest River Parkway
 Portland, Oregon 97201 Ph: 503.223.6663

I-84: THE DALLES-FIFTEEN MILE CR IM-B226
 COLUMBIA RIVER HIGHWAY
 WASCO COUNTY

Reviewed By - Terry Wheeler
 Designed By - Keith Rudisil
 Drafted By - Mike Loux

TRAFFIC CONTROL PLAN

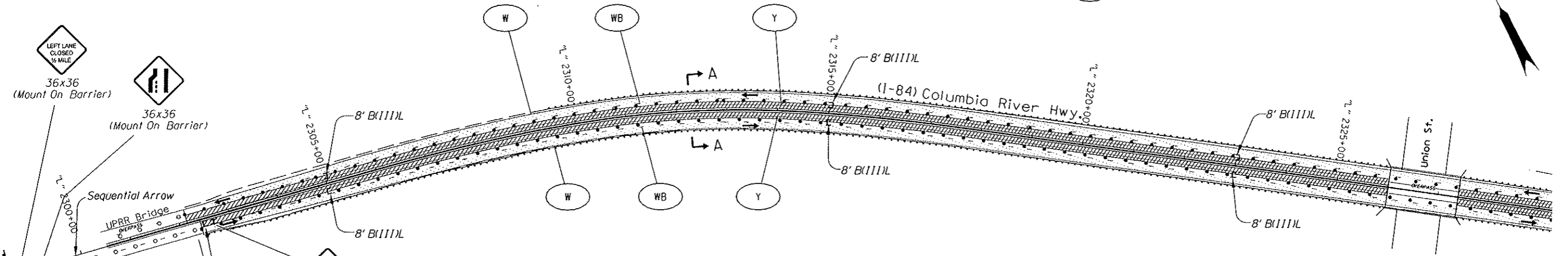
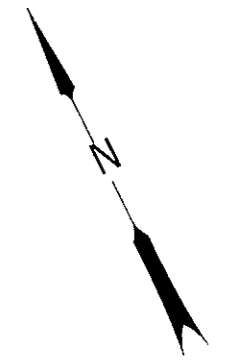
SHEET NO. 2C

STAGE II
Phase 1

- o o o o o TEMP. PLASTIC DRUMS ON 40' MAX. SPACING
- 28" TUBULAR MARKERS ON 40' MAX. SPACING

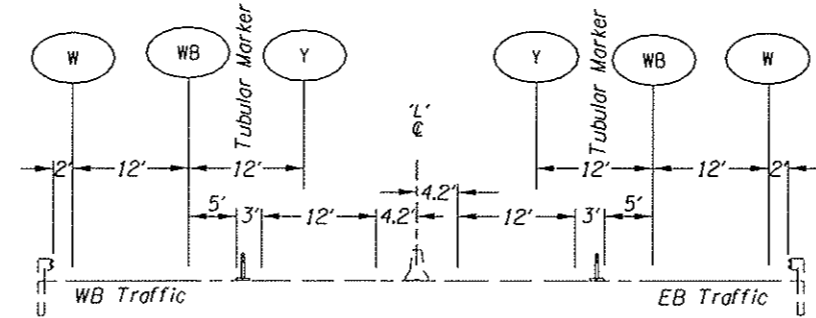
- UNDER TRAFFIC
- UNDER CONSTRUCTION

- Inst. 4" white line
- Inst. 4" white broken line
- Inst. 4" yellow line

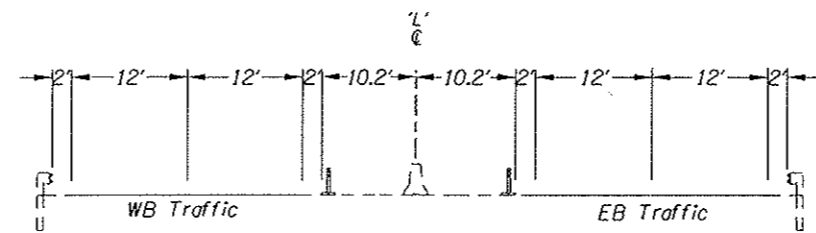


Revised	DATE	APPROVED	REVISION
Δ	05/09	K.R.R.	Revise Section Text

- Notes:
1. Cover Or Remove All Signs That Conflict With Temporary Signs And Staging As Directed By The Engineer.
 2. All Dimensions Are Shown In Inches Unless Otherwise Noted.
 3. All Signs Are Type "04" Unless Shown Otherwise.
 4. Unlabeled Items Were Installed On A Previous Stage.



SECTION A-A



SECTION A-A
(HOLIDAY TRAFFIC)

- IMMEDIATE GRADING LIMITS
- FINAL GRADING LIMITS
- UNDER TRAFFIC
- EXISTING GROUND
- TOP OF STAGE, TEMP. OR FINAL SURFACING

REGISTERED PROFESSIONAL ENGINEER
12,197
Keith R. Rudisil
OREGON
JULY 15, 1983
KEITH R. RUDISIL
EXPIRES 12/31/10

OREGON DEPARTMENT OF TRANSPORTATION

DAVID EVANS AND ASSOCIATES INC.
2100 Southwest River Parkway
Portland Oregon 97201 Ph: 503.223.6663

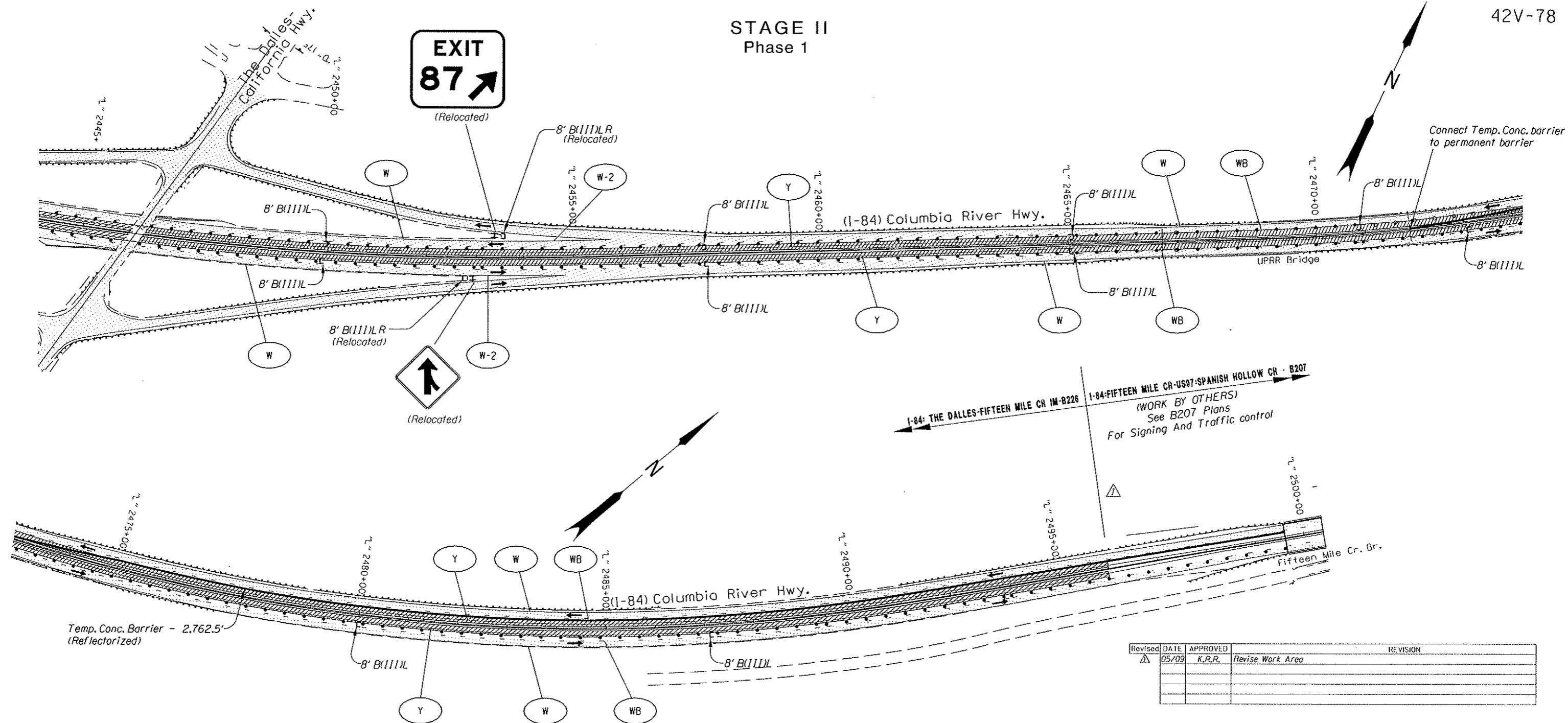
I-84: THE DALLES-FIFTEEN MILE CR IM-B226
COLUMBIA RIVER HIGHWAY
WASCO COUNTY

Reviewed By - Terry Wheeler *T.W.*
Designed By - Keith Rudisil
Drafted By - Mike Loux

TRAFFIC CONTROL PLAN

SHEET NO. 2C-5

STAGE II
Phase 1

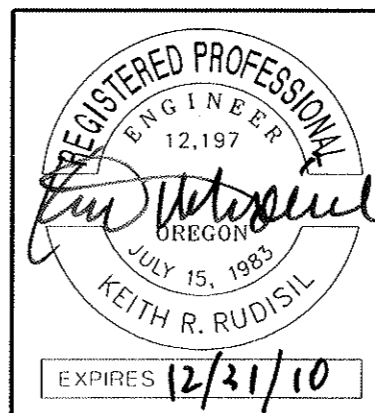


Revised	DATE	APPROVED	REVISION
Δ	05/09	K.R.R.	Revise Work Area

- W Inst. 4" white line
- W-2 Inst. 8" white line
- WB Inst. 4" white broken line
- Y Inst. 4" yellow line

- ○ ○ ○ ○ TEMP. PLASTIC DRUMS ON 40' MAX. SPACING
- ● ● ● ● 28" TUBULAR MARKERS ON 40' MAX. SPACING
- [Dotted Pattern] UNDER TRAFFIC
- [Hatched Pattern] UNDER CONSTRUCTION

Notes:
 1. Cover Or Remove All Signs That Conflict With Temporary Signs And Staging As Directed By The Engineer.
 2. All Dimensions Are Shown In Inches Unless Otherwise Noted.
 3. All Signs Are Type "04" Unless Shown Otherwise.
 4. Unlabeled Items Were Installed On A Previous Stage.



OREGON DEPARTMENT OF TRANSPORTATION

DAVID EVANS AND ASSOCIATES INC.
 2100 Southwest River Parkway
 Portland Oregon 97201 Ph: 503.223.6663

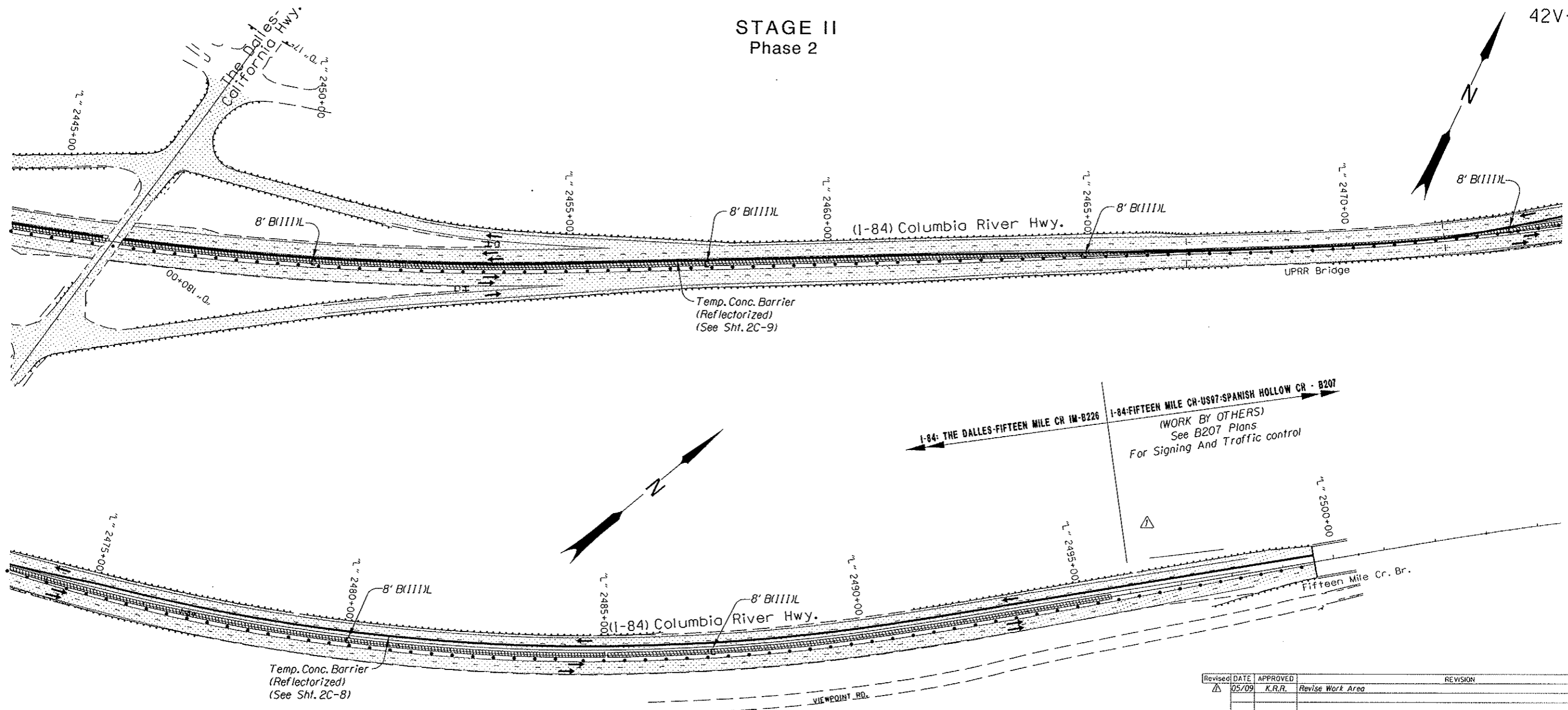
I-84: THE DALLES-FIFTEEN MILE CR IM-B226
 COLUMBIA RIVER HIGHWAY
 WASCO COUNTY

Reviewed By - Terry Wheeler *T.W.*
 Designed By - Keith Rudisil
 Drafted By - Mike Loux

TRAFFIC CONTROL PLAN

SHEET NO. **2C-8**

STAGE II
Phase 2



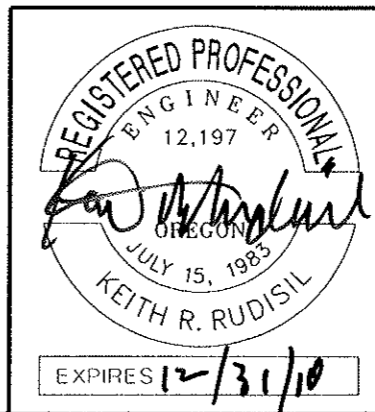
I-84: THE DALLES-FIFTEEN MILE CR IM-B226
I-84:FIFTEEN MILE CR-US97-SPANISH HOLLOW CR - B207
(WORK BY OTHERS)
See B207 Plans
For Signing And Traffic control

Revised DATE	APPROVED	REVISION
05/09	K.R.R.	Revise Work Area

- o o o o o TEMP. PLASTIC DRUMS ON 40' MAX. SPACING
- 28" TUBULAR MARKERS ON 40' MAX. SPACING

- UNDER TRAFFIC
- UNDER CONSTRUCTION

Notes:
 1. Cover Or Remove All Signs That Conflict With Temporary Signs And Staging As Directed By The Engineer.
 2. All Dimensions Are Shown In Inches Unless Otherwise Noted.
 3. All Signs Are Type "04" Unless Shown Otherwise.
 4. Unlabeled Items Were Installed On A Previous Stage.



OREGON DEPARTMENT OF TRANSPORTATION

DAVID EVANS AND ASSOCIATES INC.
 2100 Southwest River Parkway
 Portland Oregon 97201 Ph: 503.223.6663

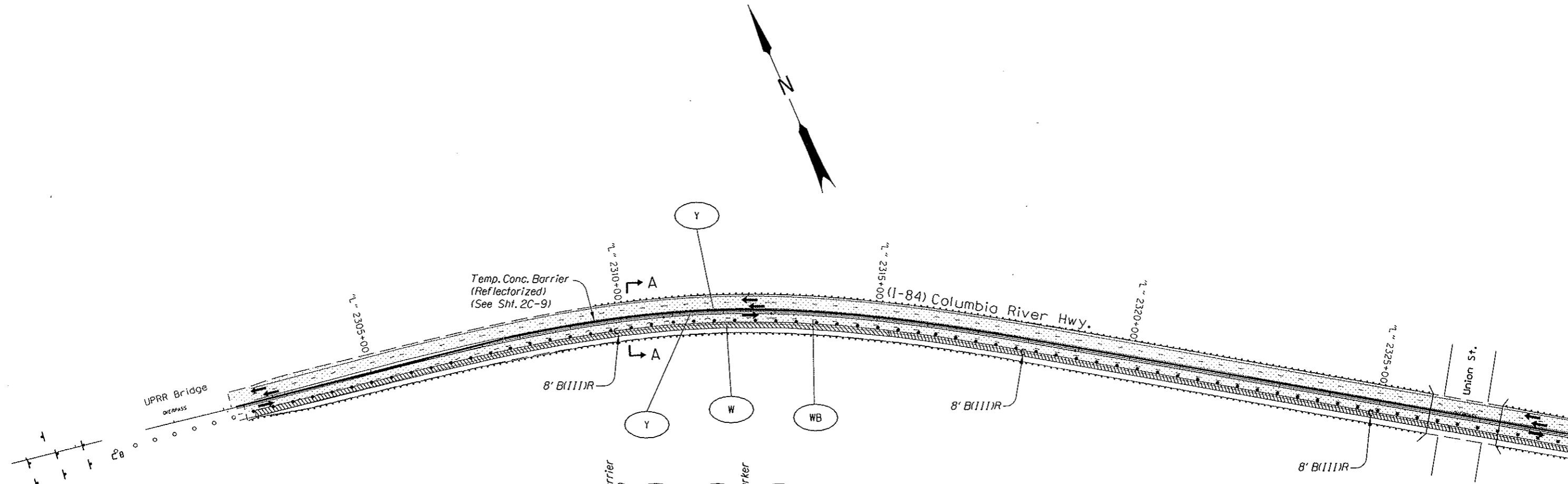
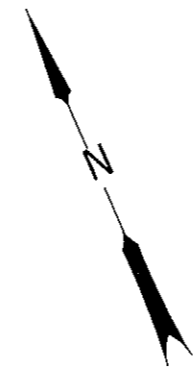
I-84: THE DALLES-FIFTEEN MILE CR IM-B226
 COLUMBIA RIVER HIGHWAY
 WASCO COUNTY

Reviewed By - Terry Wheeler *T.W.*
 Designed By - Keith Rudisil
 Drafted By - Mike Laux

TRAFFIC CONTROL PLAN

SHEET NO. 2C-12

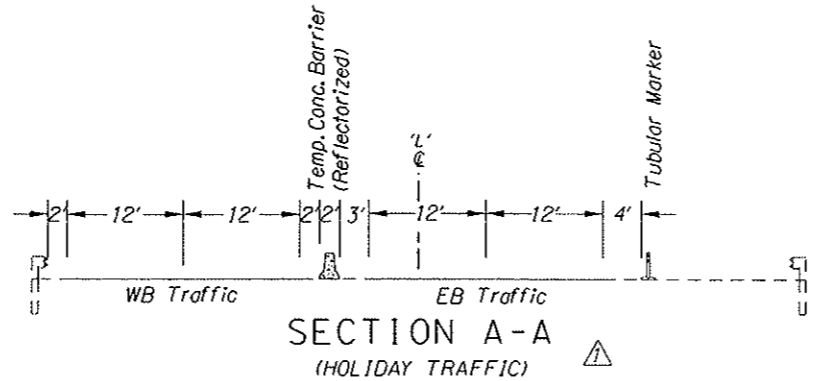
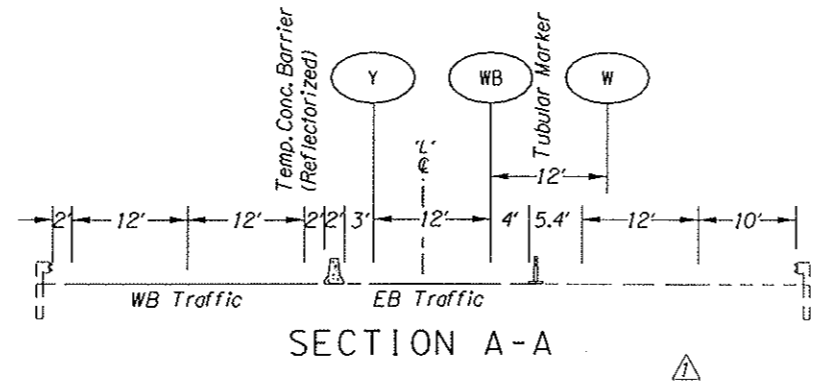
STAGE III



——— IMMEDIATE GRADING LIMITS
 - - - FINAL GRADING LIMITS
 ——— UNDER TRAFFIC
 - - - EXISTING GROUND
 - - - TOP OF STAGE, TEMP. OR FINAL SURFACING

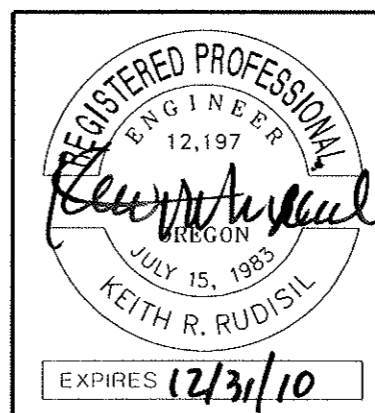
○ ○ ○ ○ ○ TEMP. PLASTIC DRUMS ON 40' MAX. SPACING
 ● ● ● ● ● 28" TUBULAR MARKERS ON 40' MAX. SPACING

UNDER TRAFFIC
 UNDER CONSTRUCTION
 (W) Inst. 4" white line
 (Y) Inst. 4" yellow line
 (WB) Inst. 4" white broken line



Notes:
 1. Cover Or Remove All Signs That Conflict With Temporary Signs And Staging As Directed By The Engineer.
 2. All Dimensions Are Shown In Inches Unless Otherwise Noted.
 3. All Signs Are Type "04" Unless Shown Otherwise.
 4. Unlabeled Items Were Installed On A Previous Stage.

Revised	DATE	APPROVED	REVISION
△	05/09	K.R.R.	Revise Section Text



OREGON DEPARTMENT OF TRANSPORTATION
 DAVID EVANS AND ASSOCIATES INC.
 2100 Southwest River Parkway
 Portland Oregon 97201 Pn: 503.223.6663

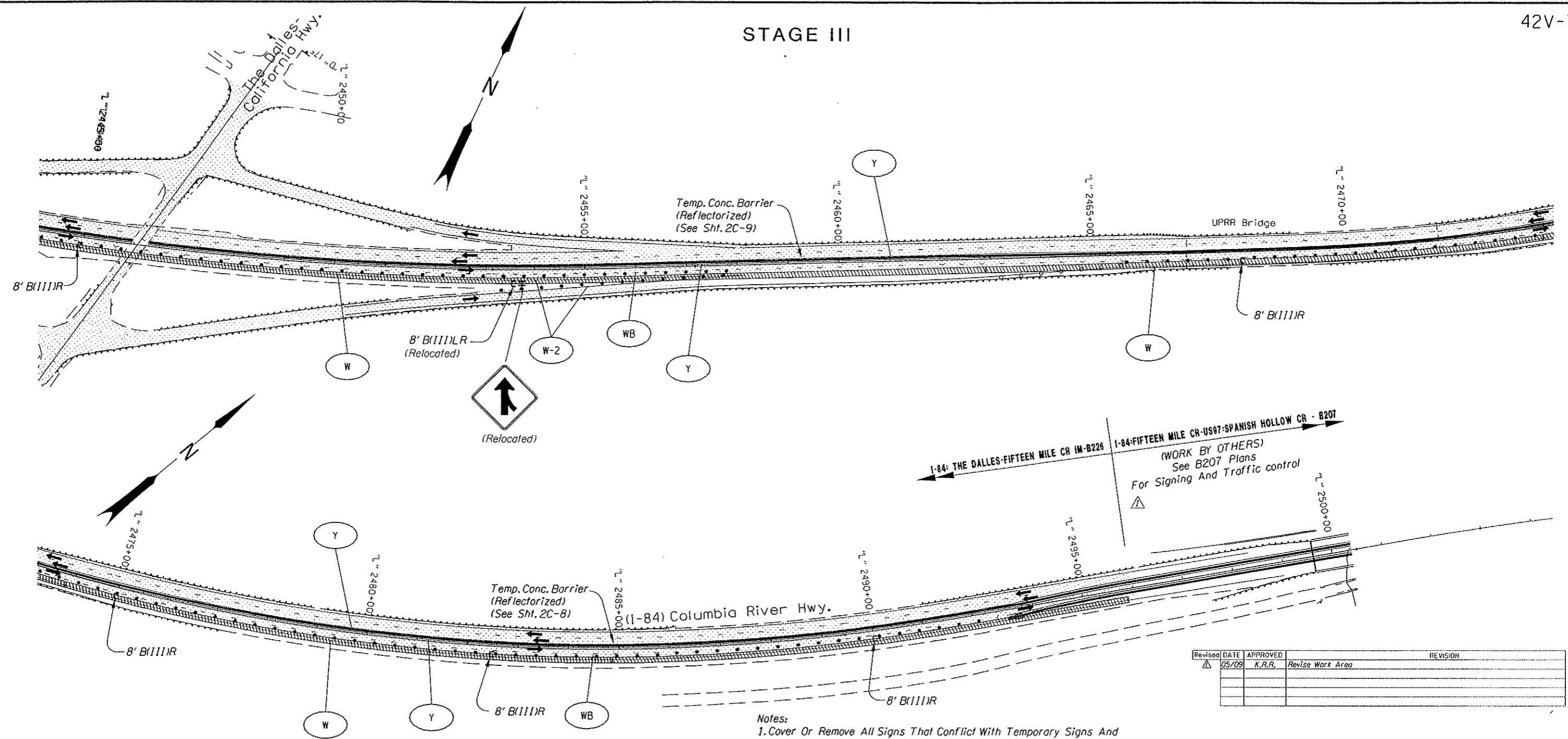
I-84: THE DALLES-FIFTEEN MILE CR IM-B226
 COLUMBIA RIVER HIGHWAY
 WASCO COUNTY

Reviewed By - Terry Wheale *T.W.*
 Designed By - Keith Rudisil
 Drafted By - Mike Loux

TRAFFIC CONTROL PLAN

SHEET NO. 2C-13

STAGE III



I-84: THE DALLES-FIFTEEN MILE CR IM-B226
 I-84:FIFTEEN MILE CR-US97-SPANISH HOLLOW CR - B207
 (WORK BY OTHERS)
 See B207 Plans
 For Signing And Traffic control

Revised	DATE	APPROVED	REVISION
Δ	05/09	K.R.R.	Revise Work Area

- Notes:
1. Cover Or Remove All Signs That Conflict With Temporary Signs And Staging As Directed By The Engineer.
 2. All Dimensions Are Shown In Inches Unless Otherwise Noted.
 3. All Signs Are Type "04" Unless Shown Otherwise.
 4. Unlabeled Items Were Installed On A Previous Stage.

- ○ ○ ○ ○ TEMP. PLASTIC DRUMS ON 40' MAX. SPACING
- ● ● ● ● 28" TUBULAR MARKERS ON 40' MAX. SPACING

- UNDER TRAFFIC
- UNDER CONSTRUCTION
- Inst. 4" white line
- Inst. 4" yellow line
- Inst. 8" white line
- Inst. 4" white broken line

REGISTERED PROFESSIONAL ENGINEER
 12,197

 OREGON
 JULY 15, 1983
 KEITH R. RUDISIL
 EXPIRES 12/31/10

OREGON DEPARTMENT OF TRANSPORTATION

DAVID EVANS AND ASSOCIATES INC.
 2100 Southwest River Parkway
 Portland Oregon 97201 Ph: 503.223.6663

I-84: THE DALLES-FIFTEEN MILE CR IM-B226
 COLUMBIA RIVER HIGHWAY
 WASCO COUNTY

Reviewed By - Terry Wheel *T.W.*
 Designed By - Keith Rudisil
 Drafted By - Mike Loux

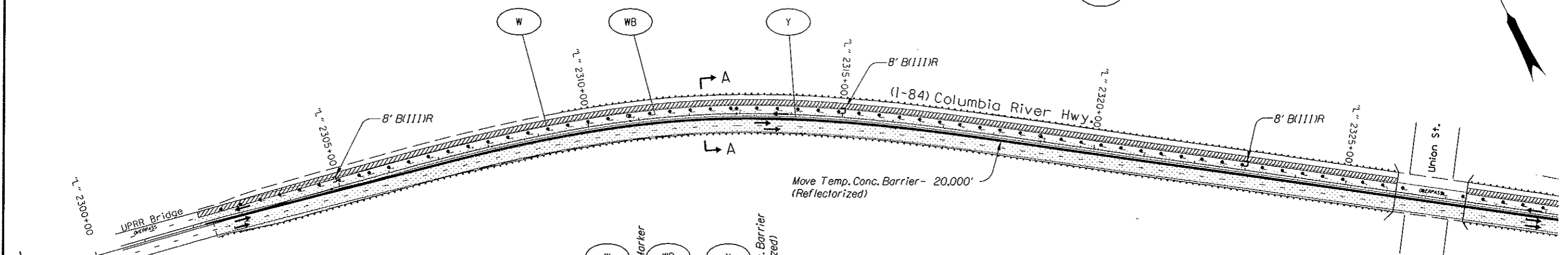
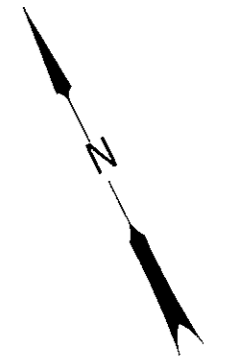
TRAFFIC CONTROL PLAN

SHEET NO. 2C-16

STAGE IV

42V-78

- W Inst. 4" white line
- WB Inst. 4" white broken line
- Y Inst. 4" yellow line



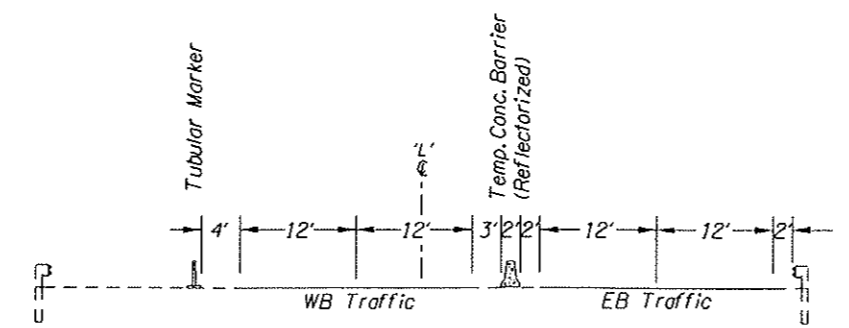
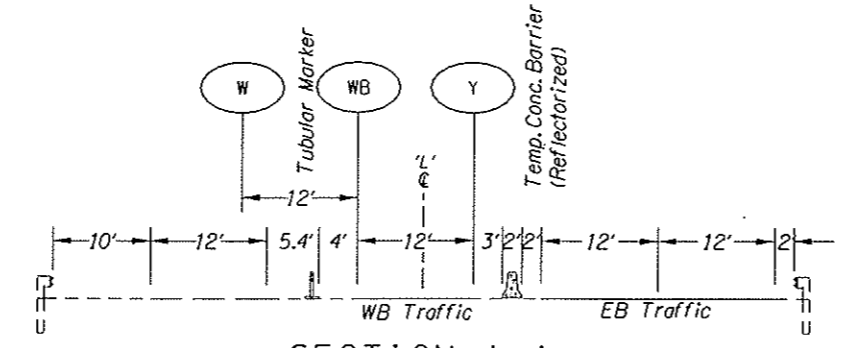
Revised	DATE	APPROVED	REVISION
Δ	05/09	K.R.R.	Revise Section Text

- Notes:
1. Cover Or Remove All Signs That Conflict With Temporary Signs And Staging As Directed By The Engineer.
 2. All Dimensions Are Shown In Inches Unless Otherwise Noted.
 3. All Signs Are Type "04" Unless Shown Otherwise.
 4. Unlabeled Items Were Installed On A Previous Stage.
 5. Leave W.B. White Fog Line. Remove W.B. Yellow And Skip Lines.

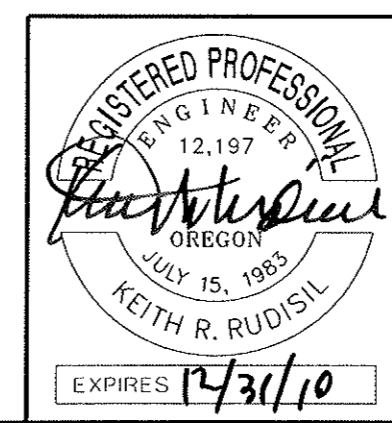
- ○ ○ ○ ○ TEMP. PLASTIC DRUMS ON 40' MAX. SPACING
- ● ● ● ● 28" TUBULAR MARKERS ON 40' MAX. SPACING

- UNDER TRAFFIC
- UNDER CONSTRUCTION

- IMMEDIATE GRADING LIMITS
- FINAL GRADING LIMITS
- UNDER TRAFFIC
- EXISTING GROUND
- TOP OF STAGE, TEMP. OR FINAL SURFACING



SECTION A-A
(HOLIDAY TRAFFIC)



OREGON DEPARTMENT OF TRANSPORTATION

DAVID EVANS AND ASSOCIATES INC.
2100 Southwest River Parkway
Portland Oregon 97201 Ph: 503.223.6663

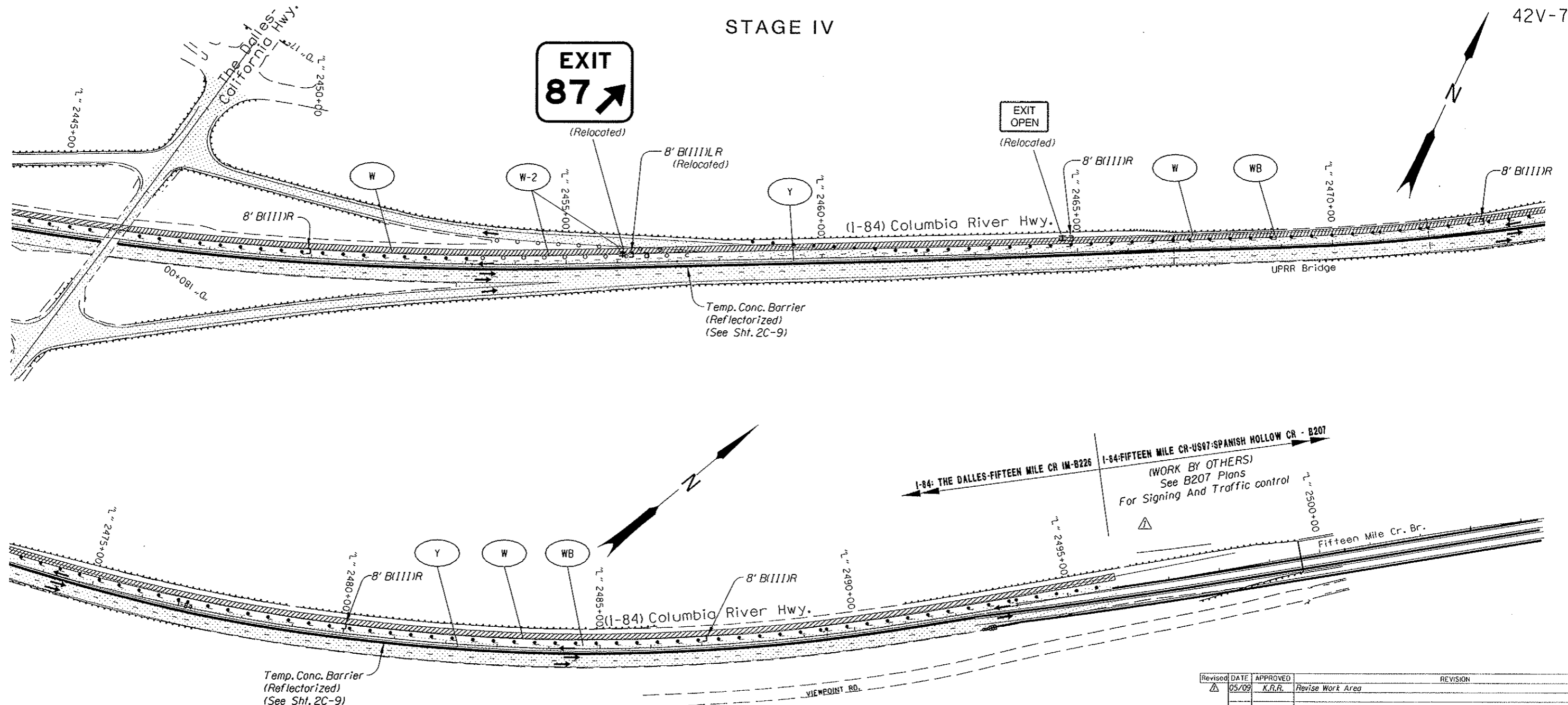
I-84: THE DALLES-FIFTEEN MILE CR IM-B226
COLUMBIA RIVER HIGHWAY
WASCO COUNTY

Reviewed By - Terry Wheeler *T.W.*
Designed By - Keith Rudisil
Drafted By - Mike Loux

TRAFFIC CONTROL PLAN

SHEET NO. **2C-17**

STAGE IV



I-84: THE DALLES-FIFTEEN MILE CR IM-B226
 I-84:FIFTEEN MILE CR-US97-SPANISH HOLLOW CR - B207
 (WORK BY OTHERS)
 See B207 Plans
 For Signing And Traffic control

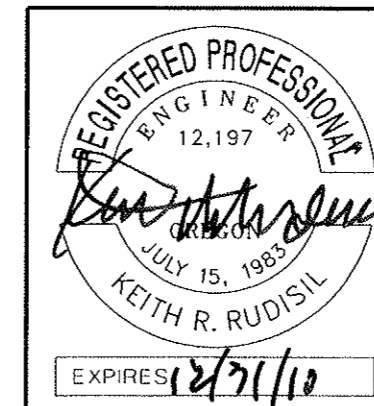
Temp. Conc. Barrier
 (Reflectorized)
 (See Sht. 2C-9)

Revised	DATE	APPROVED	REVISION
Δ	05/09	K.R.R.	Revise Work Area

- Notes:
1. Cover Or Remove All Signs That Conflict With Temporary Signs And Staging As Directed By The Engineer.
 2. All Dimensions Are Shown In Inches Unless Otherwise Noted.
 3. All Signs Are Type "04" Unless Shown Otherwise.
 4. Unlabeled Items Were Installed On A Previous Stage.

- W Inst. 4" white line
- W-2 Inst. 8" white line
- WB Inst. 4" white broken line
- Y Inst. 4" yellow line

- ○ ○ ○ ○ TEMP. PLASTIC DRUMS ON 40' MAX. SPACING
- ● ● ● ● 28" TUBULAR MARKERS ON 40' MAX. SPACING
- ▨ UNDER TRAFFIC
- ▩ UNDER CONSTRUCTION



OREGON DEPARTMENT OF TRANSPORTATION

DAVID EVANS AND ASSOCIATES INC.
 2100 Southwest River Parkway
 Portland Oregon 97201 Pn: 503.223.6663

I-84: THE DALLES-FIFTEEN MILE CR IM-B226
 COLUMBIA RIVER HIGHWAY
 WASCO COUNTY

Reviewed By - Terry Wheeler *T.W.*
 Designed By - Keith Rudisil
 Drafted By - Mike Loux

TRAFFIC CONTROL PLAN

SHEET NO. **2C-20**