



# Oregon

Theodore R. Kulongoski, Governor

Department of Transportation  
Technical Services  
Roadway Engineering Section  
355 Capitol Street NE, Room 222  
Salem, OR 97301-3871  
Telephone 503-986-3714  
FAX 503-986-3749

DATE: April 14, 2009

## Addenda No. 1

TO: PLAN HOLDERS

PREPARED BY: Shane Terwilliger P.L.S.  
Shane Terwilliger

APPROVED BY: Carol A. Cartwright P.E.  
Carol Cartwright

SUBJECT: US101: Neahkahnne Mountain Rock Wall Repair Section  
Oregon Coast Highway  
Tillamook County  
Grading, Drainage, Structure, and Paving Project  
(Bids to be opened and read April 23, 2009)

### The following changes are made to the Project Bid Booklet:

1. The following changes are made to the Project Bid Items:

a. Quantity changes:

<u>Number</u>	<u>Item</u>	<u>Quantity</u>	
		<u>Original</u>	<u>New</u>
0110	Temporary Striping	2584	2744
0120	Stripe Removal	2584	2744

b. Added items:

<u>Number</u>	<u>Item</u>	<u>Unit</u>	<u>Quantity</u>
0350	Thermoplastic, Profile, 120 Mils, Extruded	Foot	2600

Make a copy of and use the new attached Bid Sheets. A Bid **not** including these new Bid Sheets **will be rejected as non-responsive**.

**The following changes are made to the Project Special Provisions:**

1. Section **00160 - SOURCE OF MATERIALS** - This Section is replaced with the following Section:

**SECTION 00160 - SOURCE OF MATERIALS**

Comply with Section 00160 of the Standard Specifications modified as follows:

**00160.30 Agency-Furnished Material** - The Agency will furnish the listed items at the following locations:

- Approximately 12 stones (dislodged from the wall in a recent accident), located at the Seaside Maintenance Yard, 836 Avenue S., Seaside, OR 97138. Contact Dan McFadden 503-738-5753, to arrange contractor pick-up.
  - Photos of the wall, prior to the accident, available at the Project Manager's office.
2. Subsection **00220.40(e)(2) Weekends** - This subsection is replaced with the following subsection:  
**00220.40(e)(2) July through August Weekends** - Between 6:00 p.m. on Friday and midnight on Sunday.
  3. Subsection **00225.02 General Requirements** - The last paragraph that begins with the words " Provide two copies ...." is deleted.
  4. Subsection **00225.05 Contractor Traffic Control Plan** - This subsection is replaced with the following subsection:

**00225.05 Contractor Traffic Control Plan** - Replace this subsection, except for the subsection number and title, with the following:

The Contractor will be allowed to use the Agency's TCP, modify the Agency's TCP, or use a different TCP. Submit the following, for approval, five calendar days before the preconstruction conference:

**(a) Agency or Contractor TCP** - If the Agency's TCP is used without modification, a written notification indicating that the Agency's TCP will be used without modification.

If the Contractor will be using a modified Agency TCP, or if the Contractor will not be using the Agency TCP, include the following:

- Proposed TCP showing all TCM and quantities of all TCD.
- Proposed order and duration of the TCM.

- A detailed temporary striping plan.

**(b) Tourist-Oriented Directional (TOD) and Business Logo Signs** - Two copies of a sketch map of the Project showing all existing tourist-oriented directional (TOD) and business logo signs and a written narrative describing how these signs will be kept in service and protected throughout all the construction stages.

If there are no TOD signs on the project, a written notification that no TOD signs exist within the project limits.

5. Subsection **00225.43(j) Temporary Signal Stop Line Markings** - This entire subsection is deleted.
6. Subsection **00225.95 Traffic Signal** - - This entire subsection is deleted.
7. Subsection **00290.20(c-3) Reuse, Recycle, and Dispose of Materials** - This subsection is replaced with the following subsection:

**00290.20(c-3) Reuse, Recycle, and Dispose of Materials** - Replace the bullet that begins "Reuse demolition..." with the following bullet:

- Reuse demolition debris.

8. Subsection **00598.00 Scope** – Add the following:

This Work also includes acquiring the Agency provided stones (SP0160.30) and incorporating them into the wall in their original locations.

9. Subsection **00598.30 Personnel Qualification** - The paragraph that begins with the words "The Master Stonemason shall ...." is replaced with the following:

The Master Stonemason shall be on site during all phases of rock wall dismantling and construction, unless an alternate is approved by the Engineer.

10. Subsection **00598.40 General** - The first sentence of the paragraph that begins with the words " The rock wall face shall slope..... " is replaced with the following:

The rock wall face shall slope toward the highway at 12V (vertical) to 1H (horizontal).

11. Section **00865 - LONGITUDINAL PAVEMENT MARKINGS - DURABLE** - This Section is added after Section 0850:

#### **SECTION 00865 - LONGITUDINAL PAVEMENT MARKINGS - DURABLE**

Comply with Section 00865 of the Standard Specifications.

12. Subsection **04100.01(c)** - Add the following sentence:

Testing will be at no additional cost to the Agency.

13. Subsection **04100.10 General** - Item number 2, "2. Masonry Cement: ASTM C91-93" of the materials list is deleted. Renumber the list.

14. Subsection **04100.43 Mixing Setting Mortar** - The first sentence of the paragraph that begins with the words " While mixer is in operation..... " is replaced with the following:

While mixer is in operation, add three-fourths of the required water, one half of the aggregate, and all of the lime and cement; then the remainder of the aggregate.

**The following changes are made to the Project Plans:**

1. Plan sheets 2, 2B-3, 3A are replaced with revised plan sheets 2, 2B-3, 3A.

These changes will be included in the Contract for this Project. It is understood that your Bid will be submitted accordingly.

Make copies of the new Bid Sheets to replace the Special Provisions Bid Schedule Sheets.

Attachments: New Bid Sheets  
Revised Plan Sheets

BID SCHEDULE

CONTRACT ID: 14007

PROJECT: US101: NEAHKAHNIE MTN ROCK WALL  
REPAIR

PROJECT KEY: 15474

ADDENDUM NUMBER: 1

ITEM NO	ITEM DESCRIPTION	QUANTITY AND UNITS	UNIT PRICE (IN FIGURES)	BID AMOUNT (IN FIGURES)
---------	------------------	--------------------	----------------------------	----------------------------

SECTION 0001 TEMPORARY FEATURES AND APPURTENANCES

0010	0210-0100000A MOBILIZATION	LS	ALL	
0020	0225-0100000A TEMPORARY PROTECTION AND DIRECTION OF TRAFFIC	LS	ALL	
0030	0225-0102000J TEMPORARY SIGNS	SQFT	340.00	
0040	0225-0105000E TEMPORARY BARRICADES, TYPE III	EACH	6.00	
0050	0225-0126000F TEMPORARY CONCRETE BARRIER, REFLECTORIZED	FOOT	402.00	
0060	0225-0132000F MOVING TEMPORARY CONCRETE BARRIER	FOOT	578.00	
0070	0225-0133000E TEMPORARY IMPACT ATTENUATOR	EACH	2.00	
0080	0225-0136000E MOVING TEMPORARY IMPACT ATTENUATORS	EACH	4.00	
0090	0225-0141200E REPAIR TEMPORARY IMPACT ATTENUATOR	EACH	2.00	
0100	0225-0145000E TEMPORARY PLASTIC DRUMS	EACH	56.00	
0110	0225-0153000F TEMPORARY STRIPING	FOOT	2,744.00	
0120	0225-0154000F STRIPE REMOVAL	FOOT	2,744.00	

BID SCHEDULE

CONTRACT ID: 14007

PROJECT: US101: NEAHKAHNNIE MTN ROCK WALL  
REPAIR

PROJECT KEY: 15474

ADDENDUM NUMBER: 1

ITEM NO	ITEM DESCRIPTION	QUANTITY AND UNITS	UNIT PRICE (IN FIGURES)	BID AMOUNT (IN FIGURES)
0130	0225-0158000E PORTABLE TRAFFIC SIGNAL	EACH 2.00		
0140	0225-0164000E PORTABLE CHANGEABLE MESSAGE SIGNS	EACH 2.00		
0150	0225-0168000T FLAGGERS	HOUR 700.00		
0160	0225-0168100E FLAGGER STATION LIGHTING	EACH 4.00		
0170	0280-0100000A EROSION CONTROL	LS ALL		
0180	0280-0112000F SEDIMENT FENCE, SUPPORTED	FOOT 835.00		
0190	0290-0100000A POLLUTION CONTROL PLAN	LS ALL		

SECTION 0002 ROADWORK

0200	0305-0100000A CONSTRUCTION SURVEY WORK	LS ALL		
0210	0310-0106000A REMOVAL OF STRUCTURES AND OBSTRUCTIONS	LS ALL		
0220	0330-0105000K GENERAL EXCAVATION	CUYD 400.00		
0230	0390-0105000K LOOSE RIPRAP, CLASS 50	CUYD 2.00		
0240	0390-0108000K LOOSE RIPRAP, CLASS 100	CUYD 6.00		

SECTION 0003 DRAINAGE AND SEWERS

BID SCHEDULE

CONTRACT ID: 14007

PROJECT: US101: NEAHKAHNIE MTN ROCK WALL  
REPAIR

PROJECT KEY: 15474

ADDENDUM NUMBER: 1

ITEM NO	ITEM DESCRIPTION	QUANTITY AND UNITS	UNIT PRICE (IN FIGURES)	BID AMOUNT (IN FIGURES)
0250	0445-010012AF 12 INCH CULVERT PIPE, 5 FT DEPTH	12.00 FOOT		
0260	0470-0307000E CONCRETE INLETS, TYPE CG-2	2.00 EACH		
0270	0470-0315000E CONCRETE INLETS, TYPE G-2	2.00 EACH		
0280	0480-0100000F DRAINAGE CURBS	17.00 FOOT		

SECTION 0004 BRIDGES

0290	0596-0105000J REBUILD ROCK RETAINING WALL	3,615.00 SQFT		
------	--	------------------	--	--

SECTION 0005 BASES

0300	0640-0100000M AGGREGATE BASE	200.00 TON		
------	---------------------------------	---------------	--	--

SECTION 0006 WEARING SURFACES

0310	0744-0202000M LEVEL 2, 1/2 INCH DENSE MHMAC MIXTURE	70.00 TON		
0320	0759-0110000F CONCRETE CURBS, STANDARD CURB	740.00 FOOT		
0330	0759-0128000J CONCRETE WALKS	2,590.00 SQFT		

SECTION 0007 PERMANENT TRAFFIC SAFETY AND GUIDANCE DEVICES

BID SCHEDULE

CONTRACT ID: 14007

PROJECT: US101: NEAHKAHNIE MTN ROCK WALL  
REPAIR

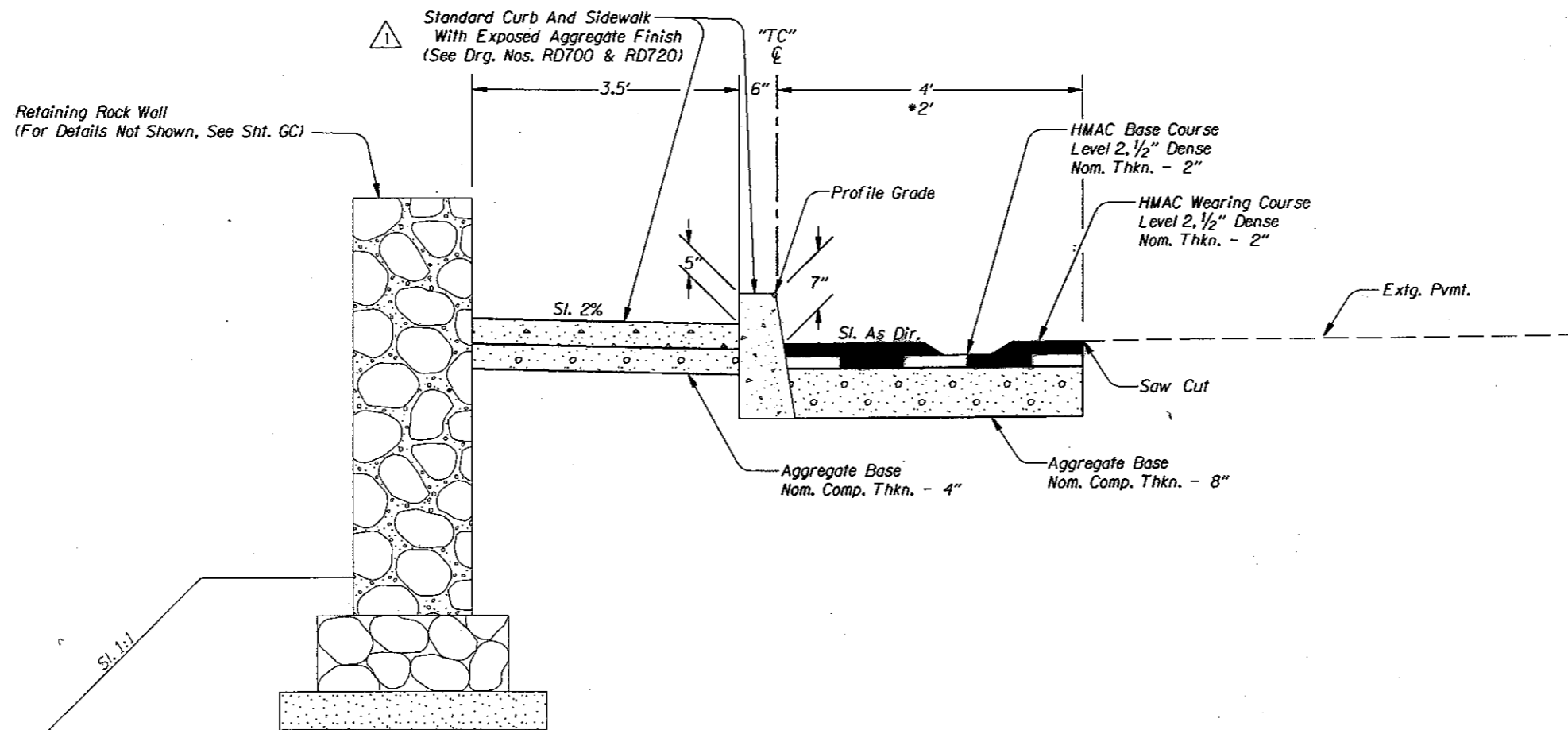
PROJECT KEY: 15474

ADDENDUM NUMBER: 1

ITEM NO	ITEM DESCRIPTION	QUANTITY AND UNITS	UNIT PRICE (IN FIGURES)	BID AMOUNT (IN FIGURES)
0340	0867-0144000J PAVEMENT BAR, TYPE A	100.00 SQFT		

SECTION 0008 ADDED BID ITEMS

0350	0865-0103000F THERMOPLASTIC, PROFILE, 120 MILS, EXTRUDED	2,600.00 FOOT		
	TOTAL BID			



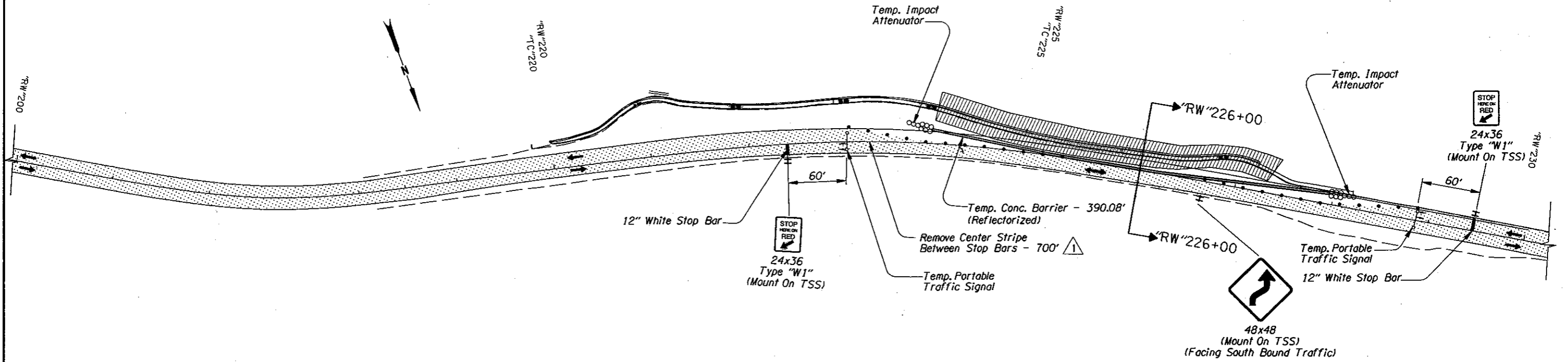
"TC" LINE

STA. "TC" 220+00 To STA. "TC" 224+80  
 \*STA. "TC" 224+80 To "TC" 226+80  
 STA. "TC" 226+80 To "TC" 227+40

Revised 04-15-2009  
 Changed Note



<b>OREGON DEPARTMENT OF TRANSPORTATION</b>	
<b>REGION 2 TECH CENTER</b>	
US101: NEAHKAHNNIE MOUNTAIN ROCK WALL REPAIR OREGON COAST HIGHWAY TILLAMOOK COUNTY	
Design Team Leader - Carol Cartwright Designed By - Bob Bakonen Drafted By - Karen L. Wright	
<b>DETAILS</b>	SHEET NO. <b>2</b>



▲ Revised 04-15-2009  
Added Note

For Section "RW"226+00 Details,  
See Sht. 2B-4

- UNDER TRAFFIC
- UNDER CONSTRUCTION
- • • • • 28" TUBULAR MARKERS ON 20' MAX. SPACING



RENEWS: 6-30-2009

OREGON DEPARTMENT OF TRANSPORTATION

REGION 2 TECH CENTER

US101: NEAHKAHNIE MOUNTAIN ROCK WALL REPAIR  
OREGON COAST HIGHWAY  
TILLAMOOK COUNTY

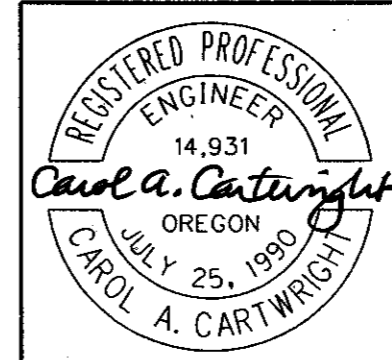
Traffic Control Plans Designer - Jason Motley  
Alignment & Staging Designer - Bob Bakanen  
Drafter - Karen L. Wright

TRAFFIC CONTROL PLAN

SHEET NO.  
2B-3

- ① Sta. "TC"220+00 To Sta. "TC"227+40, Lt.  
Reconst. Rockwall  
(For Details, See Sht. GC)
- ② Sta. "TC"221+00, Lt.  
Const. Parallel Sidewalk Ramp  
(For Details, See Sht. 2A-2)  
(See Drg. No. RD755)
- ③ Sta. "TC"220+00 To Sta. "TC"227+40, Lt.  
Const. P.C. Conc. Standard Curb - 740'  
(For Details, See Sht. 2)  
(See Drg. No. RD700)
- ④ Sta. "TC"220+00 To Sta. "TC"227+40, Lt.  
Const. P.C. Conc. Sidewalk  
Exposed Aggregate Finish - 2590 Sq. Ft.  
(For Details, See Sht. 2)  
(See Drg. No. RD720)
- ⑤ Sta. "TC"220+20, Rt.  
Const. Type "CG-2" Inlet  
Conn. To Extg. 18" Culv. Pipe  
5' Depth  
(See Drg. Nos. RD300 & RD366)
- ⑥ Sta. "TC"219+83 To Sta. "TC"220+00  
Const. P.C. Conc. Drainage Curb - 17'
- ⑦ Sta. "TC"219+83, Lt.  
Const. Scour Protection Riprap (Class 50) - 1.5 Cu. Yd.  
(For Details, See Sht. 2A)
- ⑧ Sta. "TC"220+16.2, Lt.  
Const. Energy Dissipater  
Const. Loose Riprap (Class 100) - 1.7 Cu.Yds.  
(For Details, See Sht. 2A)
- ⑨ Sta. "TC"220+16.2, Rt.  
Const. Type "G-2" Inlet, Elev. 574'  
Conn. To Extg. 18" Culv. Pipe  
5' Depth  
(See Drg. No. RD364)
- ⑩ Sta. "TC"224+78.4, Rt.  
Const. Type "G-2" Inlet, Elev. 574'  
Conn. To Extg. 18" Culv. Pipe  
5' Depth
- ⑪ Sta. "TC"224+78.4, Lt.  
Const. Energy Dissipater  
Const. Loose Riprap (Class 100) - 1.7 Cu.Yds.  
(For Details, See Sht. 2A)
- ⑫ Sta. "TC"222+00, Lt.  
Const. Parallel Sidewalk Ramp  
(For Details, See Sht. 2A-2)
- ⑬ Sta. "TC"223+00, Lt.  
Const. Parallel Sidewalk Ramp  
(For Details, See Sht. 2A-2)
- ⑭ Sta. "TC"224+00, Lt.  
Const. Parallel Sidewalk Ramp  
(For Details, See Sht. 2A-2)
- ⑮ Sta. "TC"227+04, Lt.  
Const. Parallel Sidewalk Ramp  
(For Details, See Sht. 2A-2)
- ⑯ Sta. "TC"227+08.2, Lt.  
Const. Energy Dissipater  
Const. Loose Riprap (Class 100) - 1.7 Cu.Yds.  
(For Details, See Sht. 2A)
- ⑰ Sta. "TC"227+08.2, Lt.  
Const. Type "CG-2" Inlet  
Inst. 12" Culv. Pipe - 12'  
5' Depth  
Acceptable Materials:  
Asph. Coated 2 2/3" x 1/2" 16 Ga.  
Aluminized Steel C.M.P.  
Class IV Reinf. Conc.  
Corrugated Polyethylene  
Water Tight Joints Required
- ⑱ Const. Sediment Fence - 835'  
Supported  
(See Drg. No. RD1040)

⚠ Revised 04-15-2009  
Changed Note



RENEWS: 12-31-2009

<b>OREGON DEPARTMENT OF TRANSPORTATION</b>	
<b>REGION 2 TECH CENTER</b>	
US101: NEAHKAHNE MOUNTAIN ROCK WALL REPAIR OREGON COAST HIGHWAY TILLAMOOK COUNTY	
Design Team Leader - Carol Cartwright Designed By - Bob Bakanen Drafted By - Karen L. Wright	
<b>CONSTRUCTION NOTES</b>	SHEET NO. <b>3A</b>