



# Oregon

Theodore R. Kulongoski, Governor

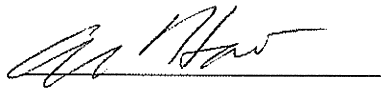
Department of Transportation  
Technical Services  
Roadway Engineering Section  
355 Capitol Street NE, Room 222  
Salem, OR 97301-3871  
Telephone 503-986-3714  
FAX 503-986-3749

DATE: September 1, 2009


## Addenda No. 1

TO: PLAN HOLDERS

PREPARED BY:



APPROVED BY:

 P.E.

SUBJECT: OR140: Warner Highway Curve Correction (MP 21) Section  
Warner Highway  
Lake County  
Grading, Drainage, Structure & Paving Project  
(Bids to be opened and read September 10, 2009)

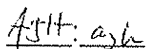
### The following changes are made to the Project Special Provisions:

1. Subsection 00330.41(a-9) Excavation Below Grade - This entire subsection is deleted.
2. Subsection 00330.91(d) General Excavation - This entire subsection is deleted.
3. Subsection 00330.94 Embankment Basis Payment - This entire subsection is deleted.

### The following changes are made to the Project Plans:

1. Plan sheet 1A is replaced with revised plan sheet 1A.
2. Plan sheets GH, GH-2, and GH-3 are added.

These changes will be included in the Contract for this Project. It is understood that your Bid will be submitted accordingly.



Attachments: Revised Plan Sheets  
New Plan Sheets

Standard Drg. Nos.

Standard Drg. Nos.

INDEX OF SHEETS, CONT'D.	
SHEET NO.	DESCRIPTION
2 Thru 2A-8 Incl.	Typical Sections
2B Thru 2B-5 Incl.	Details
2C Thru 2C-11	Traffic Control Plans
2D	Pipe Data Sheet
3 Thru 5A Incl.	General Construction & Profiles
GEO/HYDRO/ENVIRO	
GA Thru GA-3 Incl.	Erosion Control
GB	Geotechnical Data
GE Thru GE-2 Incl.	Parsnip CR Culvert
GF	Fish Passage Details
GG & GG-2	Temporary Water Management Plan
GG-3	Temporary Water Management Details
GH Thru GH-3 Incl.	Wetland & Waterway Protection Plan
GJ	Water Quality Swale Details
GM	Mandatory Disposal Site
GM-2	Mandatory Disposal Site Cross Sections
GP Thru GP-4 Incl.	Waterway Enhancement Details
GX	Irrigation Headgate Details
BRIDGE	
	Structure 03937A
81725	Bridge Rail Replacement
81726	Details on Rail and Approach Roadway Slab
TRAFFIC	
ST	Striping Plan
S-08258	Sign Installation Plan
S-08259	Sign Installation Plan
S-08260	Sign Installation Plan
S-08261	Sign Details
S-08262	Sign And Post Data Table



- RD150 - Slope Rounding
- RD300 - Trench Backfill, Bedding, Pipe Zone and Multiple Installations
- RD317 - Culvert Embankment Protection
- RD322 - Safety End Section Metal Pipe
- RD324 - Safety End Section Concrete Pipe
- RD326 - Coupling Bands for Corrugated Metal Pipe
- RD336 - Standard Storm Sewer Manhole
- RD364 - Concrete Inlets Type G-1, G-2, G-2M, & G-2MA
- RD380 - Aluminum & Steel Corrugated Pipe Fill Height Tables
- RD386 - Circular Concrete Pipe Fill Height Table
- RD390 - Fill Height Table for HDPE Pipe
- RD400 - Guardrail and Metal Median Barrier
- RD405 - Guardrail and Metal Median Barrier Parts
- RD410 - Guardrail Parts (Thrie Beam)
- RD415 - Guardrail and Metal Median Barrier Parts
- RD420 - Energy Absorbing Terminal
- RD440 - Guardrail Installation at Bridge Ends
- RD450 - Guardrail Anchors (Steel)
- RD470 - Guardrail Over Low-Fill Culverts
- RD610 - Asphalt Pavement Details
- RD700 - Curbs
- RD715 - Approaches and Non-Sidewalk Driveways
- RDB10 - Barbed and Woven Wire Fences
- RD1000 - Construction Entrances
- RD1005 - Check Dams
- RD1035 - Sediment Barrier (Type 3)
- RD1040 - Sediment Fence, Supported Sediment Fence, Unsupported

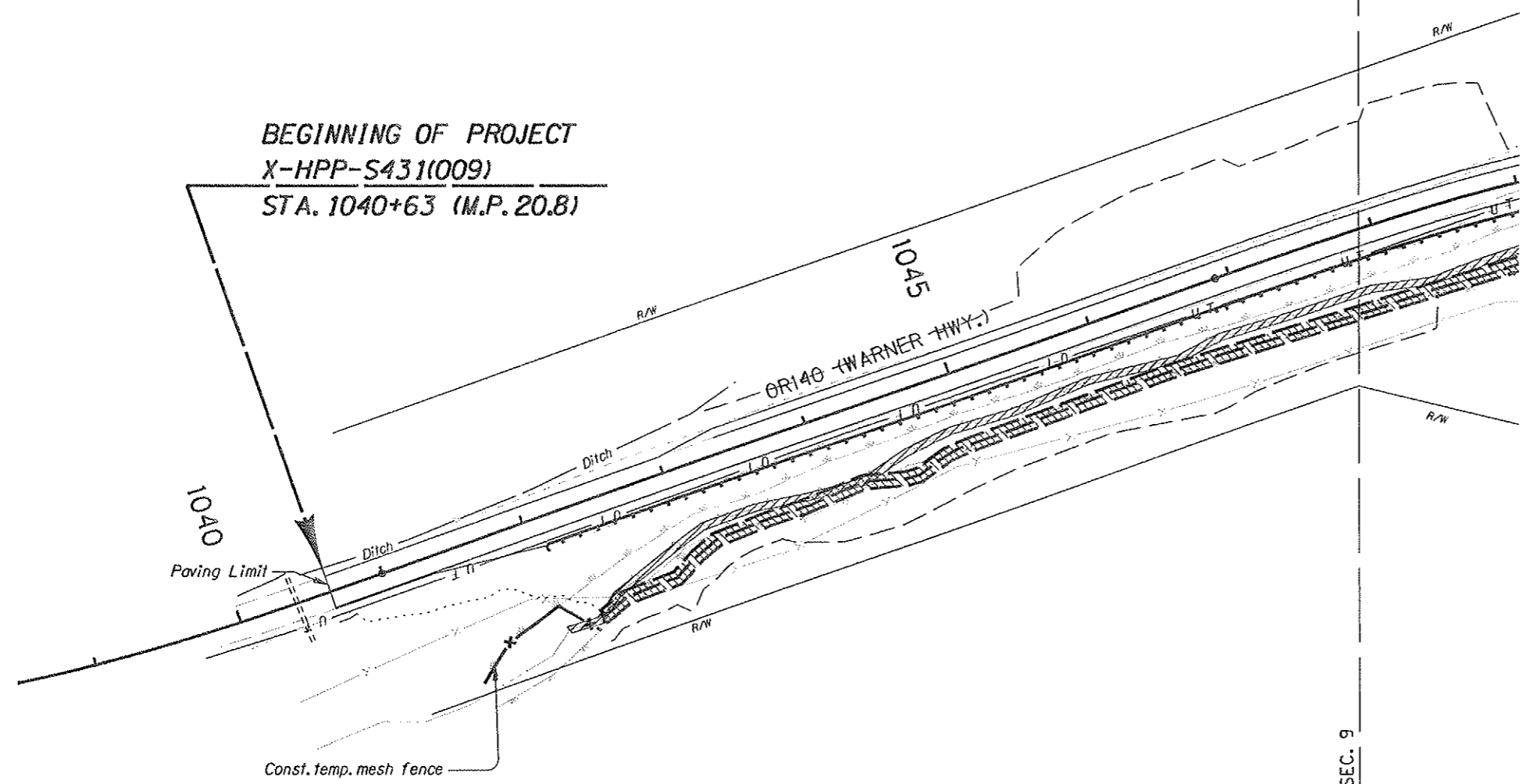
- TM200 - Sign Installation Details
- TM201 - Miscellaneous Sign Placement Details
- TM204 - Flag Board Mounting Detail
- TM222 - Installation Details Milepost Marker Posts
- TM500 - Pavement Marking Standard Detail Blocks
- TM560 - Alignment Layout: General
- TM570 - Traffic Delineators
- TM571 - Traffic Delineators Steel Post Details
- TM670 - Wood Post Sign Supports
- TM671 - 3 Second Gust Wind Speed Isotach
- TM800 - Tables, Abrupt Edge, and PCMS Details
- TM820 - Temporary Barricades
- TM821 - Temporary Sign Supports
- TM850 - 2-Lane, 2-way Roadways
- TM870 - Bridge Construction
- BR233 - Thrie-Beam Rail and Transition
- BR266 - Modified Type 2A Rail
- BR720 - Standard Gravity Retaining Wall Details
- BR800 - Box Culvert Wingwalls Details
- BR825 - Cast-in-Place Box Culverts (8'x4', 8'x6', 8'x8')
- R/W Map No. 11B-3-6

No.	REVISIONS	DATE	BY
1	Added sheets	8-10-09	RWT

<b>OR140: WARNER HIGHWAY</b> <b>CURVE CORRECTION (M.P. 21) SEC.</b> WARNER HIGHWAY LAKE COUNTY		
FEDERAL HIGHWAY ADMINISTRATION	PROJECT NUMBER	SHEET NO.
OREGON DIVISION	X-HPP-S431 (009)	1A

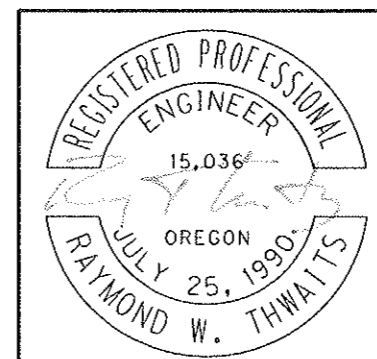


BEGINNING OF PROJECT  
X-HPP-S431(009)  
STA. 1040+63 (M.P. 20.8)



- Cut slope line
- Fill slope line
- Wetland boundary
- Extg. channel
- New channel
- No entry prior to July 1, 2009
- No entry after October 15, 2009

W 1/2 NW 1/4 SEC. 9



RENEWS: 6-30-10

OREGON DEPARTMENT OF TRANSPORTATION

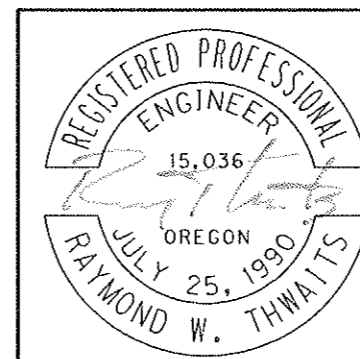
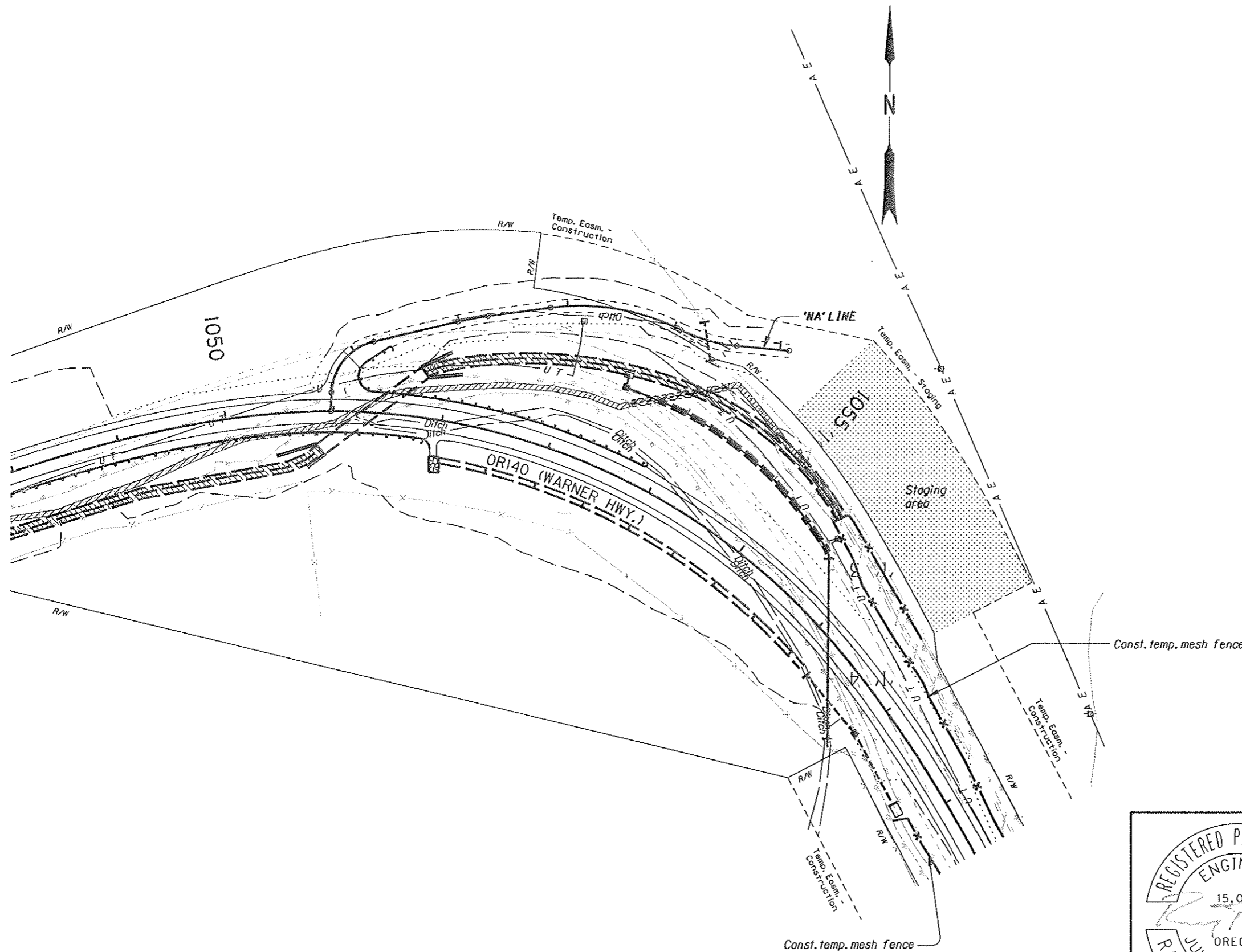
REGION 4 TECHNICAL CENTER

OR140: WARNER HIGHWAY  
CURVE CORRECTION (M.P. 21) SEC.  
WARNER HIGHWAY  
LAKE COUNTY

Designed By - Raymond W. Thwaits  
Drafted By - Joseph J. Rodriguez

WETLANDS & WATERWAY  
PROTECTION PLAN

SHEET  
NO.  
GH



RENEWS: 6-30-10

**OREGON DEPARTMENT OF TRANSPORTATION**

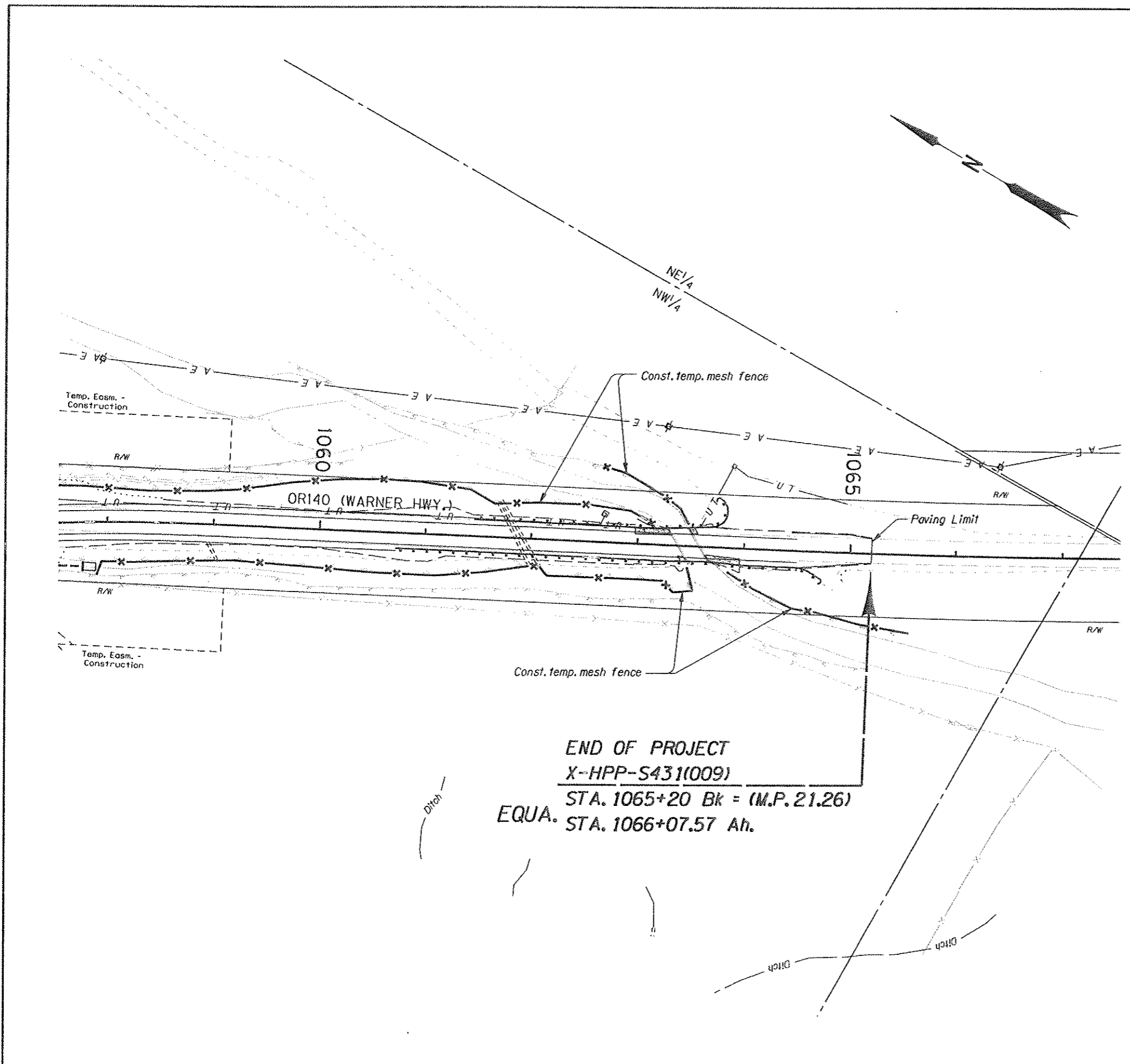
**REGION 4 TECHNICAL CENTER**

**OR140: WARNER HIGHWAY  
CURVE CORRECTION (M.P. 21) SEC.  
WARNER HIGHWAY  
LAKE COUNTY**

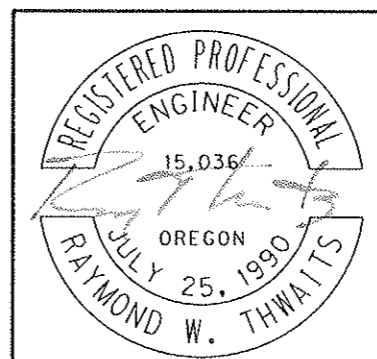
Designed By - Raymond W. Thwaits  
Drafted By - Joseph J. Rodriguez

**WETLANDS & WATERWAY  
PROTECTION PLAN**

SHEET NO.  
**GH-2**



END OF PROJECT  
 X-HPP-S431(009)  
 STA. 1065+20 Bk = (M.P. 21.26)  
 EQUA. STA. 1066+07.57 Ah.



RENEWS: 6-30-10

**OREGON DEPARTMENT OF TRANSPORTATION**

**REGION 4 TECHNICAL CENTER**

**OR140: WARNER HIGHWAY  
 CURVE CORRECTION (M.P. 21) SEC.  
 WARNER HIGHWAY  
 LAKE COUNTY**

Designed By - Raymond W. Thwaitts  
 Drafted By - Joseph J. Rodriguez

**WETLANDS & WATERWAY  
 PROTECTION PLAN**

SHEET NO.  
**GH-3**