



Oregon

Theodore R. Kulongoski, Governor

Department of Transportation
Technical Services
Roadway Engineering Section
355 Capitol Street NE, Room 222
Salem, OR 97301-3871
Telephone 503-986-3714
FAX 503-986-3749

DATE: May 13, 2009

Addenda No. 1

TO: **PLAN HOLDERS**

PREPARED BY: Bob Knorr
Bob Knorr, E.I.T.

APPROVED BY: Steven D. Rodolf P.E.
Steven D. Rodolf, P.E.

SUBJECT: (SPFLD) Section
Lane County
Thurston Elementary: Bike Shelter and Path Project
(Bids to be opened and read May 21, 2009)

The following changes are made to the Project Special Provisions:

1. Subsection **00560.80 Measurement** - This subsection is replaced with the following subsection:

The estimated quantity of structural steel is:

Structure	Steel Type	Quantity (Pound)
Bike Shelter	Steel Rolled Beam	4625 lbs

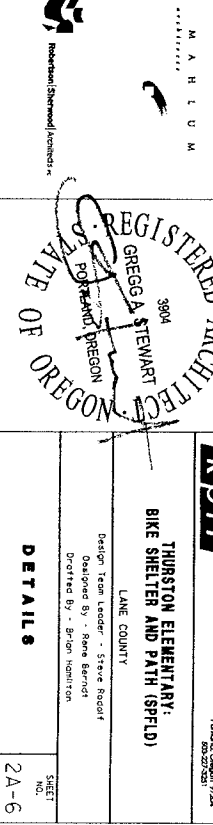
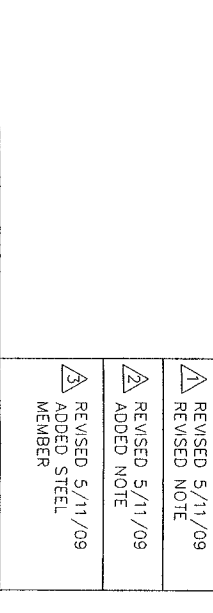
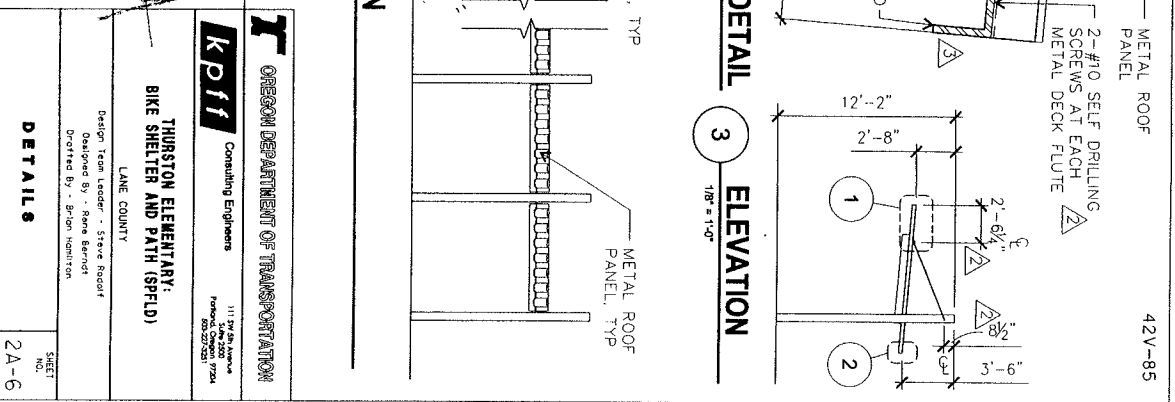
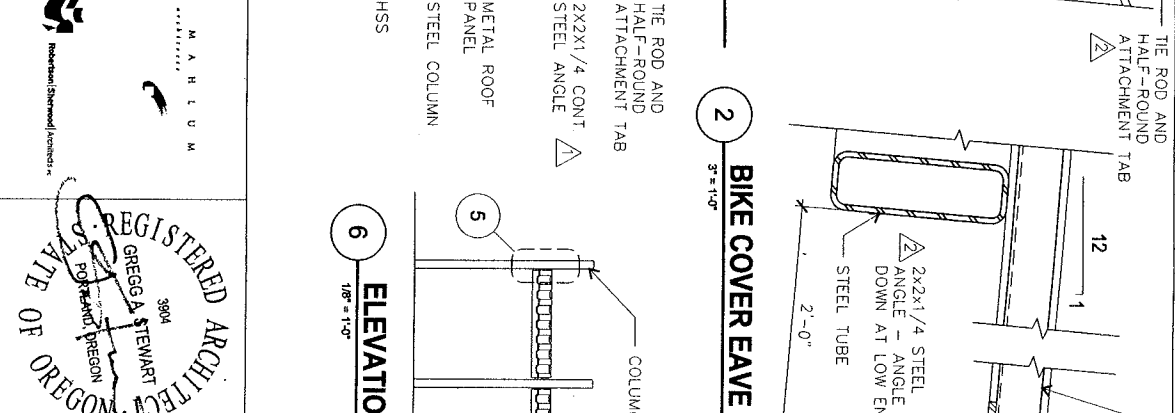
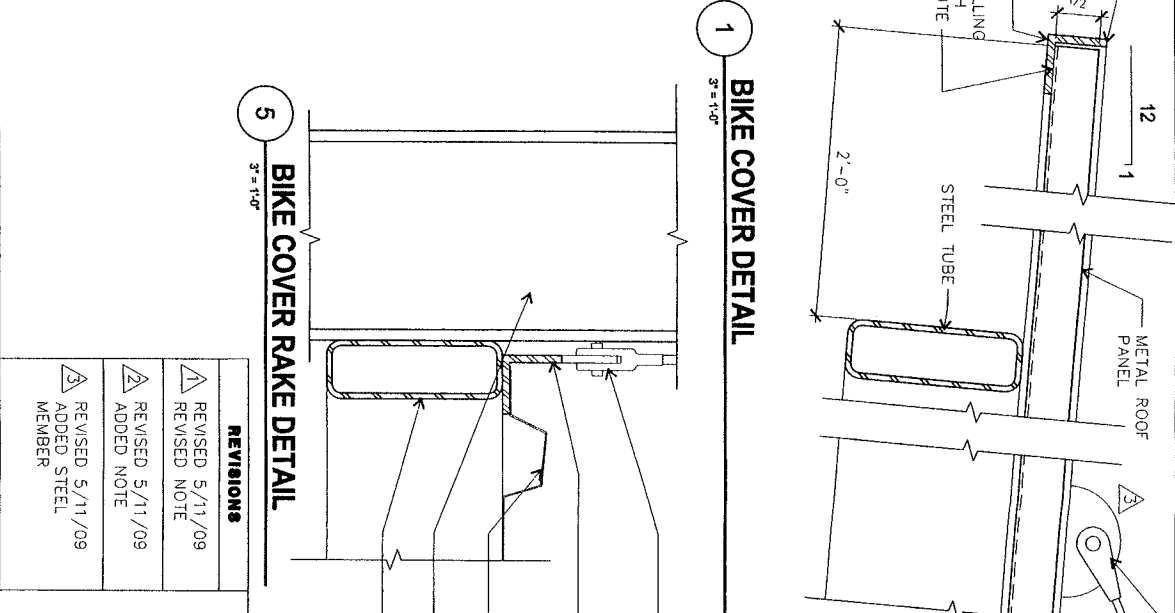
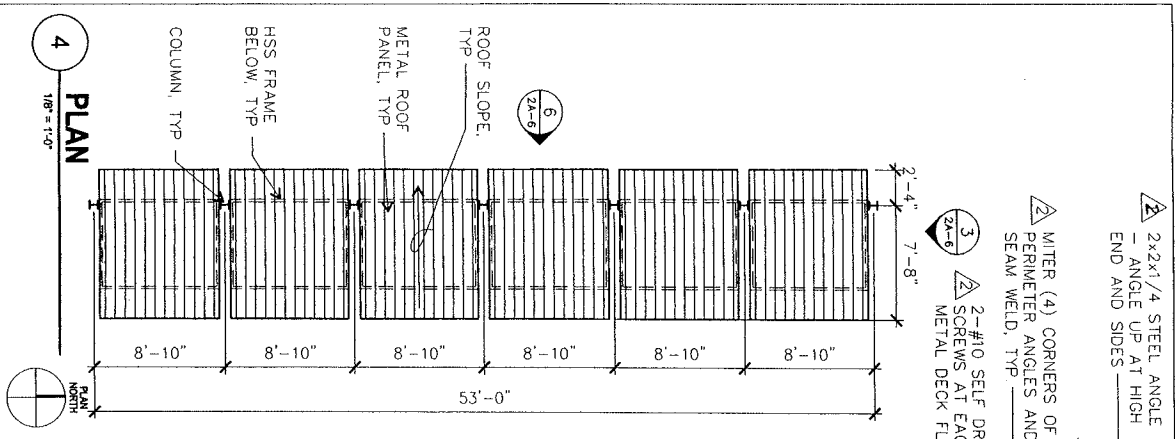
The following changes are made to the Project Plans:

1. Plan sheet 2A-6 is replaced with revised plan sheet 2A-6

These changes will be included in the Contract for this Project. It is understood that your Bid will be submitted accordingly.

REK:rek

Attachments: Revised Plan Sheet



REVISIONS

△	REVISED 5/11/09	REVISION
△	REVISED NOTE	REVISION
△	REVISED 5/11/09	REVISION
△	ADDED NOTE	REVISION
△	REVISED 5/11/09	REVISION
△	ADDED STEEL MEMBER	REVISION

M A R T I N
 ARCHITECTS
 3804 GREGG A STEWART
 PORTLAND OREGON
 503.233.8231

REGISTERED ARCHITECT
 GREGG A STEWART
 STATE OF OREGON
 3804 GREGG A STEWART
 PORTLAND OREGON
 503.233.8231

OREGON DEPARTMENT OF TRANSPORTATION
 Consulting Engineers
 1111 SW 4th Avenue
 Portland, OR 97204
 503.223.7231

THURSTON ELEMENTARY:
 BIKE SHELTER AND PATH (SPFLD)
 LANE COUNTY

Design Team Leader - Steve Record
 Designed By - Steve Record
 Drawn By - Brian Morrison

DETAILS

SHEET No. 2A-6