

NW 1/4 SEC.19 T.6S., R1E. W.M.
 SW 1/4 SEC.19 T.6S., R1E. W.M.

NE 1/4 SEC.19 T.6S., R1E. W.M.
 SE 1/4 SEC.19 T.6S., R1E. W.M.

SURVEY NARRATIVE
 CASCADE HIGHWAY SOUTH @ ABIQUA ROAD NE
 MARION COUNTY

This survey was conducted to resolve the right-of-way centerline location for the portion of the Cascade Hwy. S. (OR213) between mile point 26.34, and mile point 26.62, in the vicinity of Abiqua Rd. NE, (known locally as "Rocky Four Corners"), to perpetuate found monumentation, and to provide a basis for describing any additional Right-of-Way which may be acquired to accommodate future highway improvements. And to record facts relating to R/W on Co. Rd. 654.

Field work was performed by ODOT Highway Division Staff between March and May 1993. A Wild-Heerbrug T-2000 electronic theodolite, DI-5 distance meter, and GRE3 data collector were used to acquire and record field observations. Data was transferred and processed using intergraph corporation electronic theodolite interface and interactive coordinate geometry software.

An extensive search was made of county records to determine the monumentation from public and private sources likely to be encountered. Existing State Highway Right-of-Way is described by Highway Division Drawing 5B-8-13, which is available for inspection in Rm 200 Transportation Building, Salem Oregon. Marion County Road 654 is shown by County Road Journal Vol 3, Pp. 80-83, and Commissioners Journal, Vol. 5, Pg. 277 to be 60 feet wide by reason of the establishment date. Market Road 77 is shown by a Located Line Map as being a 50 foot width.

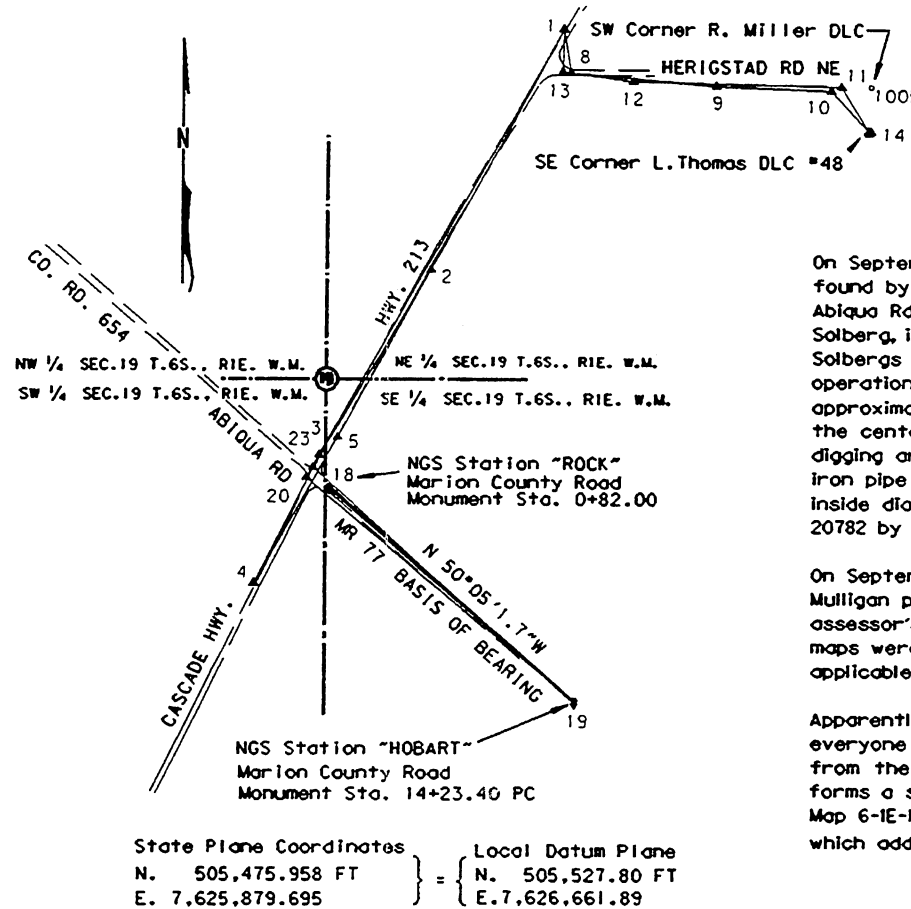
During the field search, insufficient monumentation was found to completely define the State Highway right-of-way centerline, so both edges of pavement and centerline striping were used as a basis for re-establishing the centerline. The record right-of-way alignment was placed in a computer model and rotated to obtain a "best fit" to the tied edges of pavement and striping. On Abiqua Rd. NE, county monuments at sta. 0+82.0 P.C. aka (Station "Rock"), and sta 14+23.4 P.C. aka (Station "Hobart") were used to establish centerline on M.R. 77, east of the state highway. Found monuments at 1000, and 1004 were used to establish alignment west of the state highway, then projected eastward to intersection at sta 0+82.0 to provide control on Abiqua Road for contemplated improvements.

All coordinates shown on this map are on a local datum plane which represents true ground distances. Bearings are Oregon State Grid North Zone. TO CONVERT LDP COORDINATES TO STATE PLANE COORDINATES, MULTIPLY THE LDP COORDINATES BY 0.99989744.

Basis of bearing for this survey is the published grid azimuth between NGS monuments "HOBART" and "ROCK". NAD-83 state plane coordinates of "Hobart" are noted in the control diagram.

Traverse points set during this survey were not set on, and do not represent property lines, or right-of-way lines, and are intended solely for the Divisions own use in support of any proposed or future transportation related projects. Points may be destroyed by future highway operations. It is not the intent of the Highway Division to perpetuate these traverse points as monuments.

CASCADE HIGHWAY SOUTH TRAVERSES
 NO SCALE



On September 22, 1993 Mrs. Ann Mulligan told me that the 1/2" rebar, point #1004, found by our crew, was set by Mr. Mulligan, taping 25' from the center line of Abiqua Rd. to mark the approximate location of their NW corner, as set by Mr. Solberg, in CS 29382. The property owners acted to preserve the location of Mr. Solbergs 3/8" iron rod, at the time it was destroyed by a county fill placing operation in front of their property. I checked the 25 foot distance from the approximate center of the road to the 1/2 inch rebar, and I measured 21 feet to the center of an 8 inch diameter fence corner post near the rebar. Upon digging around the base of the corner post, I recovered a badly twisted piece of iron pipe about 28 inches in length, on cutting the pipe open I measured an inside diameter of 3/8 inches. I believe this is the 1/2 inch pipe set in CS 20782 by David Bascue.

On September 24, 1993 I discussed the 50' R/W shown on his survey #29382 of the Mulligan property, with Albert Solberg. His R/W is based on the county assessor's map. Mr. Solberg stated; at the time (1982) of his survey, assessor maps were not easy to obtain. His practice was to make a sketch of the applicable portions of the assessor's map and place his notations on it.

Apparently, since MR 77 going eastward from the state highway, is a 50' R/W, everyone has been projecting that width onto Co. Rd. 654, which goes westward from the same intersection. I believe the confusion is because Co. Rd. 654, forms a short connection between MR77, and MR 74, which is labeled on Assessor Map 6-IE-19 as MR 77. Also, Assessor Map 6-IE-19D shows a 50' width on Co. Rd. 654, which adds to the confusion.

REGISTERED
 PROFESSIONAL
 LAND SURVEYOR

OREGON
 JULY 26, 1985
 JAMES H. HALLORAN
 2149

EXPIRES DEC.31, 1993

LEGEND

- ◊ FOUND GEODETIC POINT
- ▲ SET TRAVERSE POINT
- △ FOUND MONUMENT USED AS TRAVERSE POINT
- FOUND MONUMENT NOTED IN LIST
- ✕ FENCE
- RIGHT-OF-WAY
- - EDGE OF PAVEMENT
- ⊕ PROTRACTED CENTER OF SECTION (NOT MONUMENTED)

OREGON DEPARTMENT OF TRANSPORTATION
 RIGHT-OF-WAY RESOLUTION SURVEY
 AND
 MONUMENT RECOVERY AND CONTROL MAP

CASCADE HWY S
 AT ABIQUA RD
 MARION COUNTY

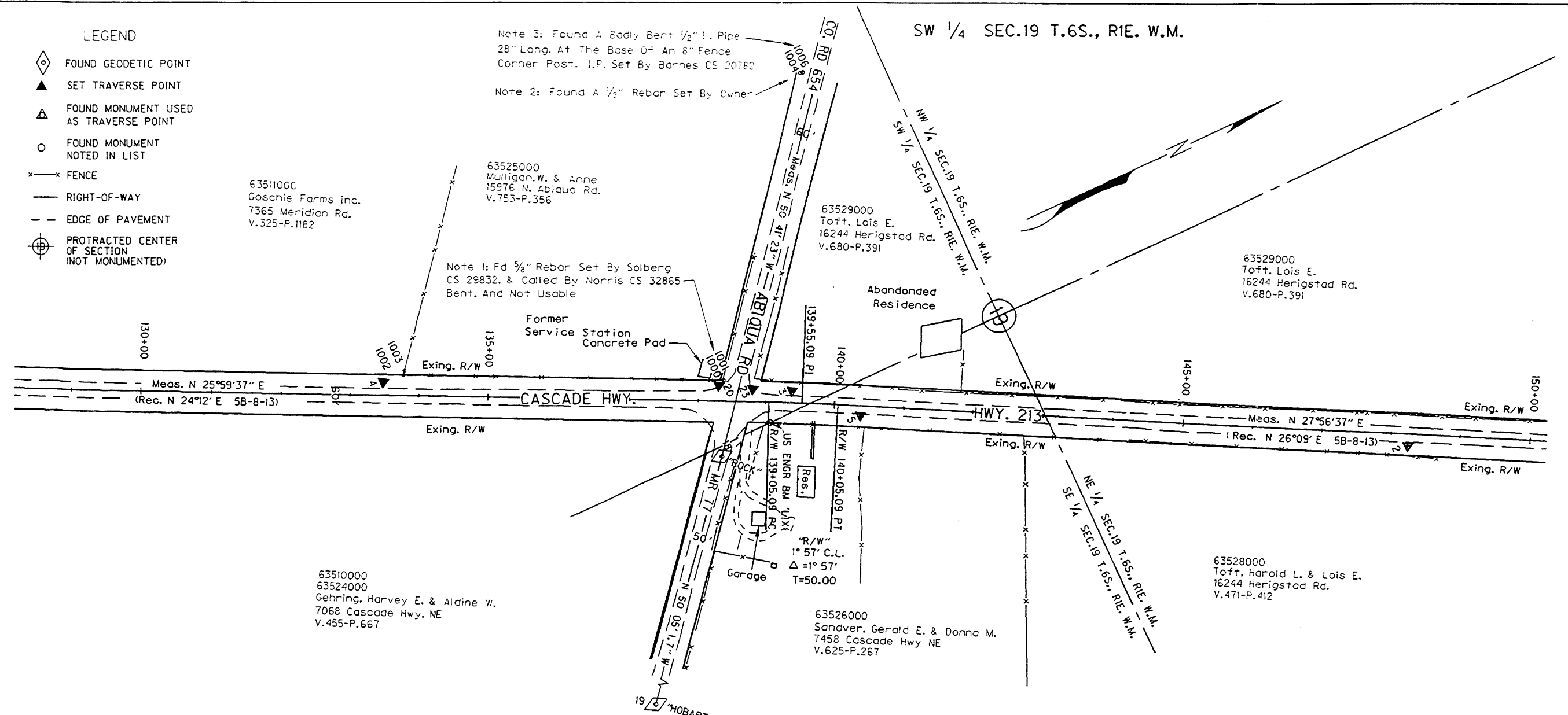
OCT 8, 1993

O.D.O.T. REGION 2 LOCATION
 2960 STATE ST. SALEM, OR. 97310
 O.D.O.T. FILE NO. IS-219

SHEET 1 OF 2

LEGEND

- ◊ FOUND GEODETIC POINT
- ▲ SET TRAVERSE POINT
- △ FOUND MONUMENT USED AS TRAVERSE POINT
- FOUND MONUMENT NOTED IN LIST
- FENCE
- RIGHT-OF-WAY
- - - EDGE OF PAVEMENT
- ⊕ PROTRACTED CENTER OF SECTION (NOT MONUMENTED)



TO CONVERT LDP COORDINATES TO STATE PLANE COORDINATES: MULTIPLY LDP'S BY 0.99989744

POINT NO.	DESCRIPTION	DATE FOUND	C/L STATION	C/L OFFSET	LDP COORDINATES NORTHING EASTING	COMMENTS
1	SET 1/2" SQ. IRON ROD W/STAMPED "ODOT #1"	5-4-93	N/A	N/A	508285.09 7626562.82	ODOT Traverse Point
2	SET 1/2" SQ. IRON ROD W/RED PLA. CAP STAMPED "OSHD 2"	5-4-93	N/A	N/A	507289.58 7626036.63	ODOT Traverse Point
3	SET 1/2" SQ. IRON ROD W/RED PLA. CAP STAMPED "3"	3-12-93	N/A	N/A	506522.95 7625591.72	ODOT Traverse Point
4	SET 1/2" SQ. IRON ROD W/RED PLA. CAP STAMPED "4"	3-12-93	N/A	N/A	505991.88 7625330.64	ODOT Traverse Point
5	SET 1/2" SQ. IRON ROD W/RED PLA. CAP STAMPED "5"	3-12-93	N/A	N/A	506596.45 7625665.11	ODOT Traverse Point
8	SET 1/2" SQ. IRON ROD W/RED PLA. CAP	3-17-93	N/A	N/A	508107.53 7626595.15	ODOT Traverse Point
9	SET 1/2" SQ. IRON ROD W/RED PLA. CAP	3-17-93	N/A	N/A	508066.54 7627201.00	ODOT Traverse Point
10	SET 1/2" SQ. IRON ROD W/RED PLA. CAP	3-17-93	N/A	N/A	508056.83 7627665.08	ODOT Traverse Point
11	SET 1/2" SQ. IRON ROD W/RED PLA. CAP	3-17-93	N/A	N/A	508073.98 7627705.96	ODOT Traverse Point
12	SET 1/2" SQ. IRON ROD W/RED PLA. CAP	3-17-93	N/A	N/A	508076.67 7626853.78	ODOT Traverse Point
13	SET 1/2" SQ. IRON ROD W/RED PLA. CAP	3-17-93	N/A	N/A	508112.03 7626561.30	ODOT Traverse Point
14	FOUND 3" BRASS DISK IN CONC. CYL.	3-17-93	N/A	N/A	507890.35 7627825.78	SE Corner DLC #48
18	FOUND 3" BRASS DISK IN MONUMENT BOX "0+82.00"-ROCK	5-4-93	N/A	N/A	506388.75 7625632.79	NGS Azi Pt. Co. C/L mon.
19	FOUND 3" BRASS DISK IN MONUMENT BOX "14+23.40"-HOBART	5-4-93	N/A	N/A	505527.80 7626661.89	NGS Sta. Co. C/L mon.
20	SET 1/2" SQ. IRON ROD W/RED PLA. CAP STAMPED "20"	5-4-93	N/A	N/A	506430.16 7625537.60	ODOT Traverse Point
23	SET PK. W/BRASS WASHER STAMPED "OSHD 23"	5-4-93	N/A	N/A	506471.04 7625565.07	ODOT Traverse Point
1000	FOUND 1/2" REBAR	3-17-93	138+36.48	29.48 LT	506435.78 7625535.66	CS#32865
1001	FOUND 5/8" REBAR - Disturbed, 0.9' West of 1000	3-17-93	138+36.48		506436.22 7625534.82	See Note 1
1002	FOUND 1/2" REBAR	3-17-93	133+77.01	29.23 LT	506022.61 7625334.20	CS#29382, CS#32865
1003	FOUND 3/4" IRON PIPE	3-17-93	133+78.56	35.60 LT	506026.80 7625329.15	CS#20782, 29382, 32865
1004	FOUND 1/2" REBAR	3-17-93	139+34.34	472.97 LT	506723.90 7625184.00	See Note 2
1005	FOUND 3" BRASS DISK IN CONC. CYL.	3-17-93	N/A	N/A	508075.45 7627827.02	SW Corner R. Miller DLC
1006	FOUND 8" FENCE COR. POST & 1/2" IRON PIPE	10-6-93	N/A	N/A	506728.20 7625184.76	See Note 3

ALIGNMENT TABLE

STATION	LDP COORDINATES NORTHING EASTING
R/W 123+90.51 POT	505123.08 7624928.12
R/W 139+05.09 PC	506484.46 7625591.91
R/W 140+50.09 PT	506573.58 7625637.26
R/W 150+59.34 POT	507504.91 7626131.29

REGISTERED PROFESSIONAL LAND SURVEYOR

OREGON JULY 26, 1985 JAMES H. HALLORAN 2149

EXPIRES DEC. 31, 1993

OREGON DEPARTMENT OF TRANSPORTATION
RIGHT-OF-WAY RESOLUTION SURVEY
AND
MONUMENT RECOVERY AND CONTROL MAP

CASCADE HWY S
AT ABIQUA RD
MARION COUNTY

OCT 20, 1993 SCALE: 1" = 100'
O.D.O.T. REGION 2 LOCATION
2960 STATE ST. SALEM, OR. 97310
O.D.O.T. FILE NO. 1S-219 SHEET 2 OF 2