



ODOT Surveyors Conference

FAQ about the ORGN

Randy Oberg, PLS
Geodetic Survey Associate
ODOT Geometrics Unit

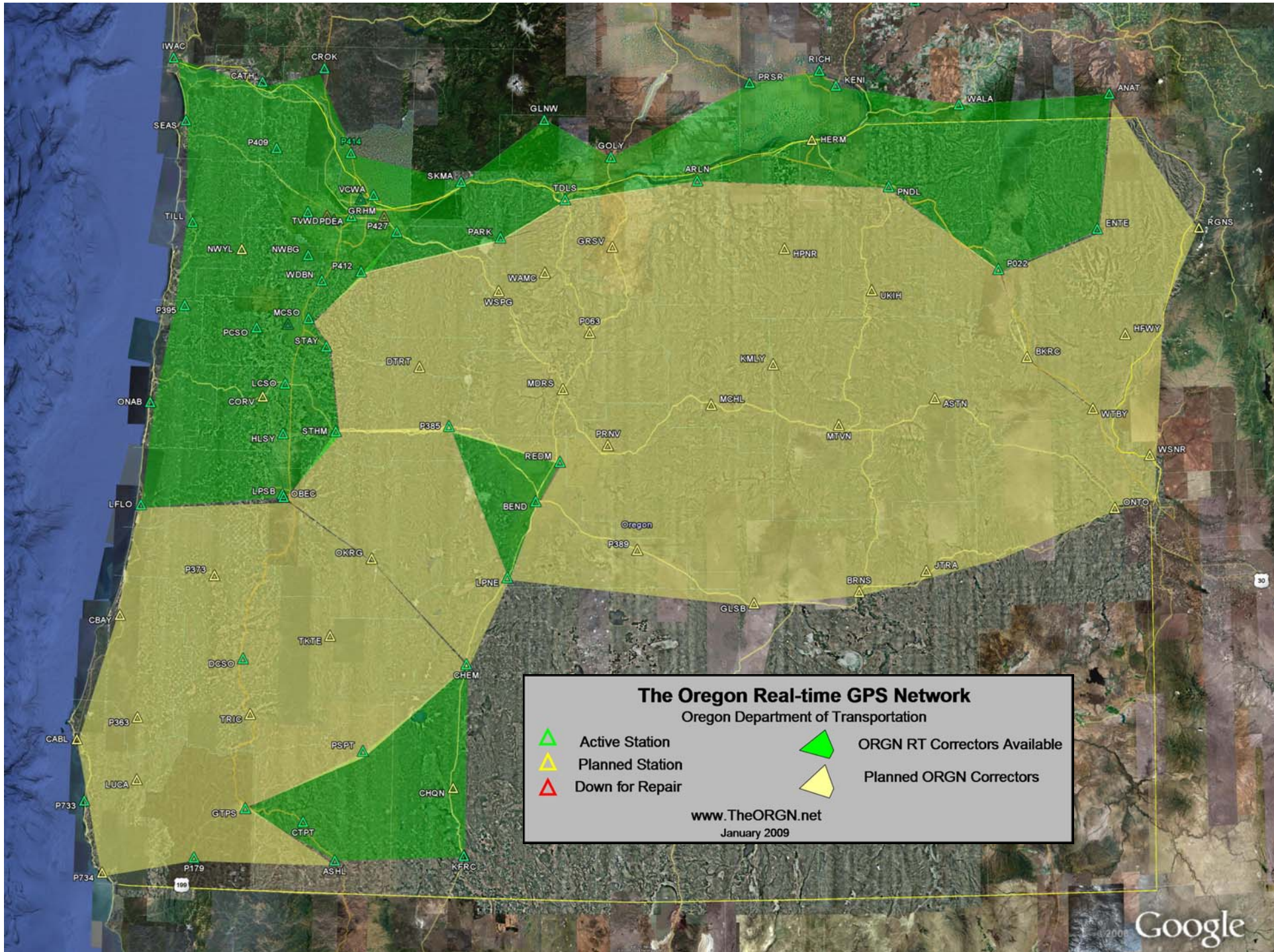


Most common Questions are about
coverage

**When are you going to get
more?**

**When will you have coverage
in my area?**

Check the coverage map on theorgn.net



The Oregon Real-time GPS Network

Oregon Department of Transportation

- | | | | |
|---|-----------------|---|------------------------------|
|  | Active Station |  | ORGN RT Correctors Available |
|  | Planned Station |  | Planned ORGN Correctors |
|  | Down for Repair | | |

www.TheORGN.net
January 2009

Why am I not getting correctors from the ORGN?

Rover Configuration

- Cellular
 - Are you getting to the Internet
 - Rover cell modem configuration
 - Outside of the cell data coverage area
- I.P & Port
- What is my User name and Password

GGA (NMEA data string sent to ORGN giving position, reference station used and position quality).



spidernwadmin@odot.state.or.us

Wed 1/28/2009 1:00 PM

28/01/2009 20:57:07: Rover user rejected. No GPGLL message received. Access denied.

28/01/2009 20:59:07: Rover user rejected. No GPGLL message received. Access denied. <end>

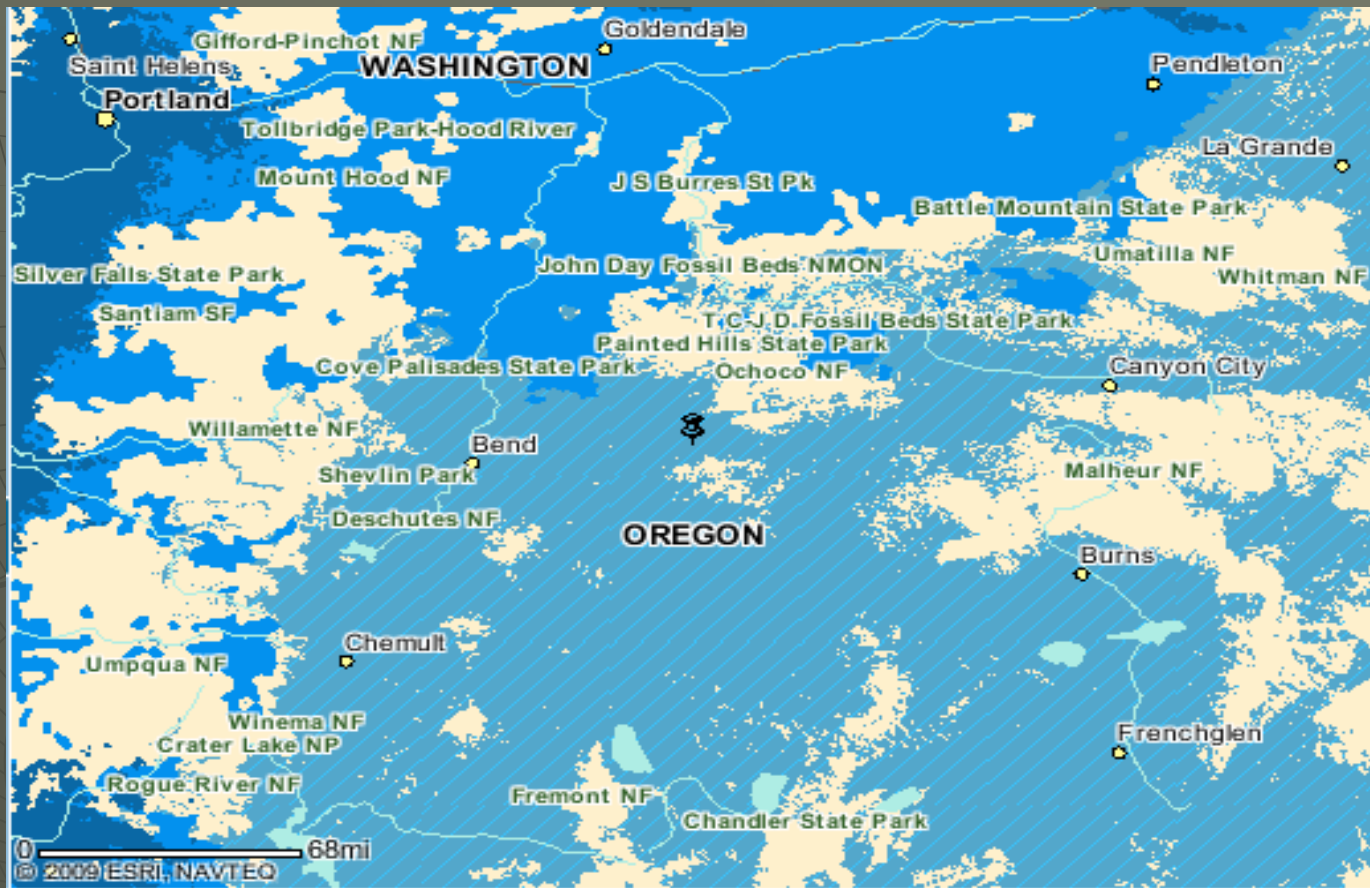
How can we Support you?

	T	U	V	W	X	Y	Z
ier	Sensor	Data Collector	DC Software	DC S/W Ver.	Cell Phone A: Provider	Cell Phone A: Type	Cell Phone A: Mc
	ATX1230	RX1250	SmartWorx	5.6	Verizon	CDMA	Multitech Verizon GF
A	R8	Trimble TSCe/TSC2	Trimble Survey Controller/TDS	11.33/4.5	Verizon	CDMA	G'zOne Type S
A	1200				Unicel	GSM	
	1200				Unicel	GSM	
	Pro XH	Ranger	TerraSync	3.01	Cingular		
	R-8	TSC2	Survey Controller	12.21	ATT	GSM	Enfora GSM 0110-01
	RX1250		SmartWorx	5.62	Verizon	CDMA	RAZR V3 (Bluetooth)
	R8		Trimble Survey Controller		AT&T	GSM	cingular 8525
	R8	Trimble	TSC2	12.21	AT&T	GSM	GSM
	R8 Model 2	Trimble TSWC 2	Trimble Survey Controller	12.21	AT&T	GSM	GSM
						CDMA	LG cu400
						CDMA	Multitech
	5800	ACU					Sony Erickson
A	1200				Unicel	GSM	
A	1200				Verizon	CDMA	GFU19
B	1200				Verizon	CDMA	GFU19
	5700	TSC2	Trimble Survey Controller	11.32	ATT	GSM	Cingular 8125
	GeoXH				Verizon		Treo 700wx
		Smart station					
	4800	TSC2	Trimble Survey Controller	12.21	Verizon	CDMA	Samsung SCH-i760
	R8	TSC2	Survey Controller		ATT	Internal r8 modem	
	5800	TSC2	Trimble Survey controller	11.21	Unicel	GSM	Motorola v361
	5700	Ranger	Trimble Survey Controller	11.32	Unicel	GSM	Motorola v197
	R8	Trimble controler		SCS900	ATT	GSM	i-phone
	3/HiPer/HiPer Lite+/HiPe	Topcon FC-200	Topcon Topsurv	7.1			
	5700	Trimble ACU	Survey Controller	11.22	Unicel	GSM	Nokia
	ProMark 500	Mobile Mapper CX	Fast Survey by Magellan	latest??	Verizon	CDMA	Blackberry Curve w
	RX1250			5.63	Verizon	CDMA	
	R6	TSC2	Trimble Survey Controller	v12.22	Unicel	GSM	MOTORAZR v3
	mojoRTK	mojoRTK	mojoRTK	1776	Aeris Communications		Kyrocera 200
	F180				ATT		
	L1 GPS NAP100	Magellan ProMark III	Windows CE/Carlson				
	R8	TSC2	Surv_Ce Fast Survey	4.2/2.1.1	Verizon	CDMA	LG VX8350
			Survey Controller		ATT	GSM	
1	GX1230	RX1210T		6	Unicell	GSM	GFU24 Siemans MC
2	GX1230	RX1210T		6	Unicell	GSM	GFU24 Siemans MC
	HyperLite+	FC-2000	Topcon Topsurv	7	ATT/US Cellular	GSM	
	HyperLite+	FC-2000	Topcon Topsurv	7	ATT/US Cellular	GSM	
	4800	TDS Ranger	TDS Survey max	4.7	US Cellular	GSM	
	RX1250 (smartover)				Verizon	CDMA	

More Questions

1. **How many people can use the same User name and Password?**
 - One (at a time)
 - Error message we see too many concurrent users
2. **What cell company provides the best coverage?**
 - Talk to Local providers
 - Check Data coverage maps on web

ATT Data Coverage March 2009

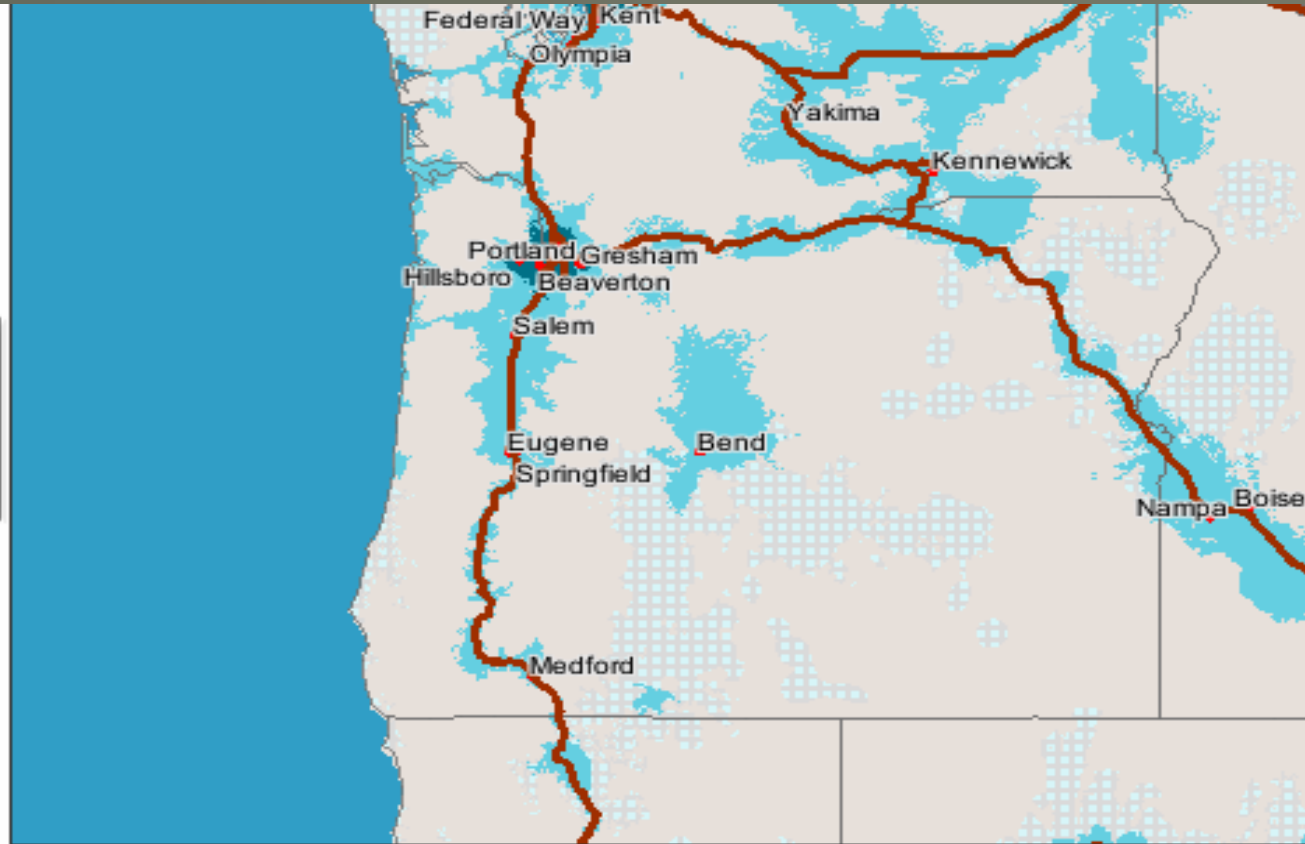


Zoom and Re-center Re-center [Print Map](#)

Data Coverage Legend






- 3G/Mobile Broadband* (in select areas) , Video Share^x
- EDGE/GPRS*
- Partner EDGE^
- Partner GPRS^
- No Service Available

T-Mobile Data Coverage March 2009



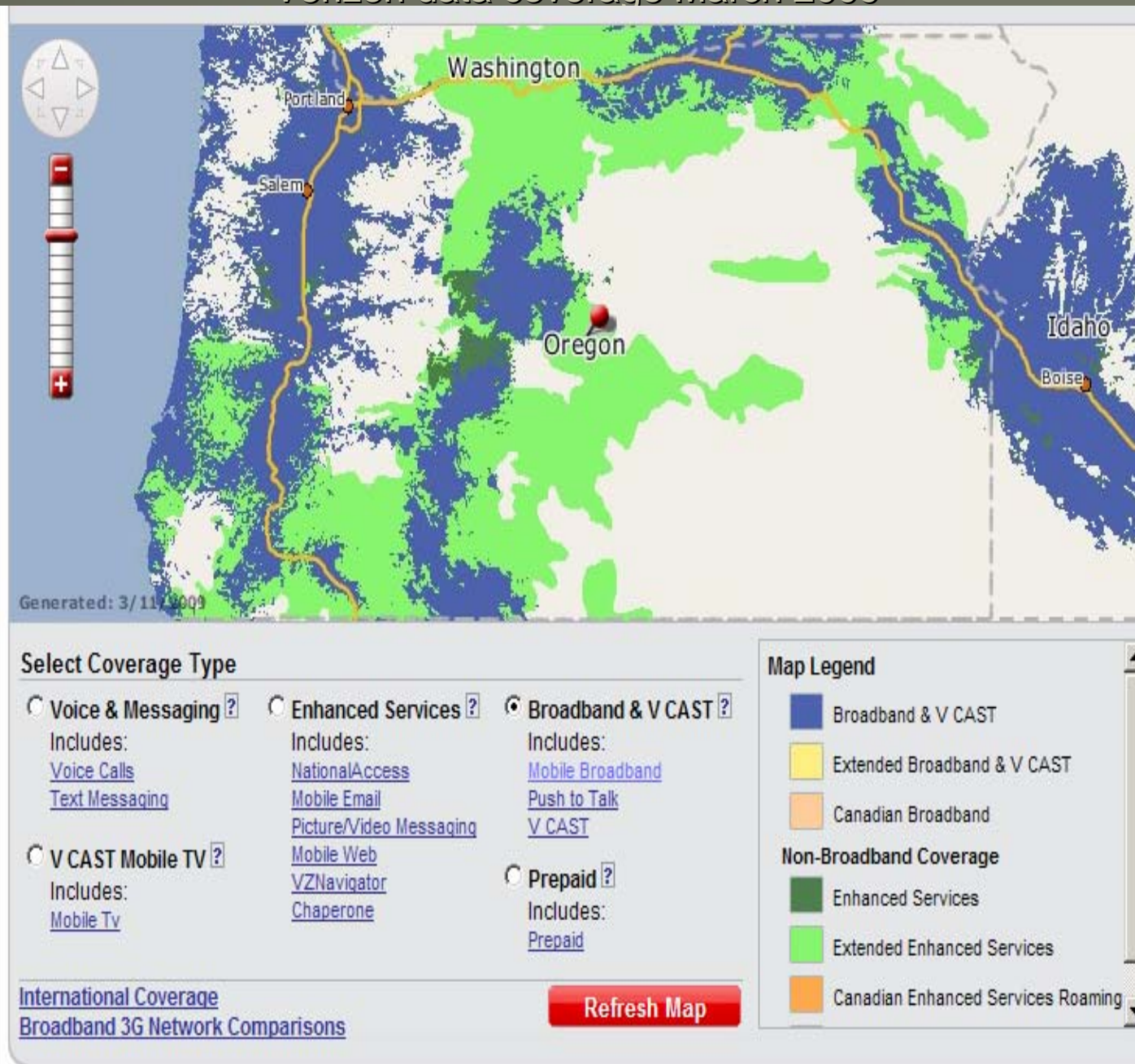
Mobile-to-mobile minutes and data services are not available in certain roaming areas included on T-Mobile's coverage maps.

Map Legend

- | | | |
|--|---|---|
|  Address Location |  T-Mobile HotSpot |  Display |
|  EDGE Data Roaming Coverage |  Roaming HotSpot
(Additional charges apply) | |

[Find a T-Mobile HotSpot >](#)

Verizon data coverage March 2009



Update Unicel to Verizon

- ◆ Change out Equipment, Cell Phones not Leica Cellular Modems
- ◆ Continue providing GSM service in rural areas
- ◆ GSM service No upgrades to 3G service.
- ◆ Partnership between Unicel and ATT will continue with Verizon providing roaming service in rural areas.
- ◆ So what do I do with my Unicel Modem?

Why am I not Hitting my Old Control Points when using the ORGN?

- ◆ Datum (LDP, State plane, HARN, Assumed)
- ◆ Coordinate Quality
- ◆ ORGN coverage
- ◆ GPS Equipment (fixed position or not)



Questions or Comments

What works and

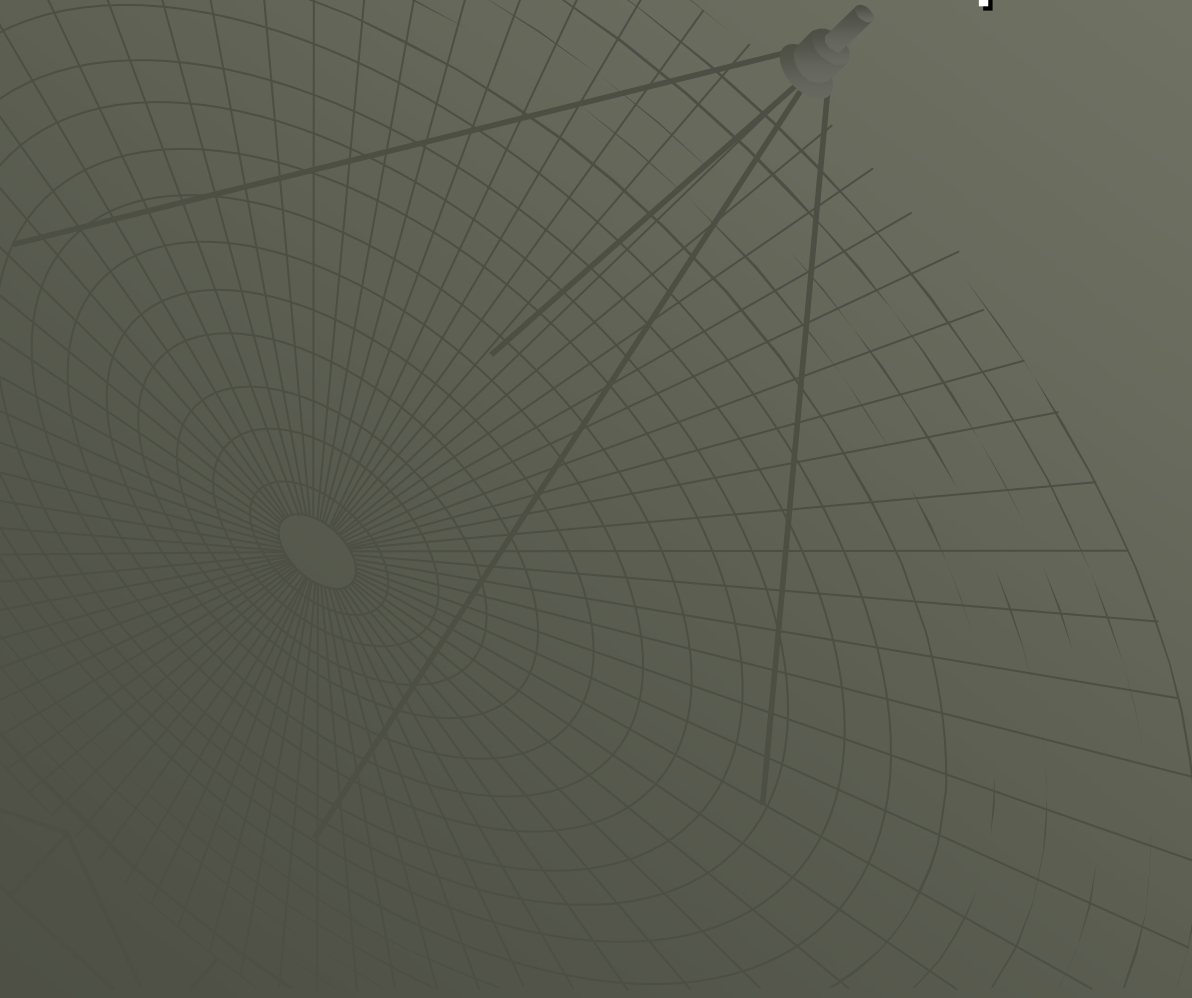
What could we do Better

ORGN Contacts

- ◆ www.TheORGN.net
- ◆ E-mail: orgn@odot.state.us
- ◆ Ron Singh 503-986-3033
- ◆ Ken Bays 503-986-3543
- ◆ Randy Oberg 503-986-3041

What Datum is the ORGN on?

NAD 83 CORS 96 Epoch 2002



What you Brand of Receiver will work?

