



**SUPPORT SERVICES
SECTION**

Purchasing and Contract Management Unit
455 Airport Rd. SE, Building K
Salem, OR 97301-5348
Telephone: (503) 986-2997
FAX: (503) 986-6910
Email: daniel.d.butcher@odot.state.or.us

Date: Monday, August 27, 2007
To: RFI #730-00035-07 Interested Parties
From: Daniel D. Butcher, Contracts Specialist
Re: Addendum #2 to RFI **730-00035-07:**
ODOT SOLAR HIGHWAY DEMONSTRATION PROJECT(S)

This document contains two sections. Section 1 contains an addendum to the RFI. Section two is a Question and Answer, supported by pictures, prompted by an interested party.

This Addendum modifies the Request for Information (RFI) Document only to the extent indicated herein. All other areas not changed or otherwise modified by this Addendum shall remain in full force and effect. This Addendum is hereby made an integral part of the original RFI document.

Section 1: Changes to the RFI. (Deletions show as ~~strike-through~~, and added text is underlined.)

On page 1, top of page:

CLOSE DATE: ~~SEPT 15~~ **OCTOBER 1, 2007**

Section: Questions and Answers. The following section does not make changes to the RFP but seeks to clarify matters.

An interested party to this RFI asked if ODOT was considering installing solar panels on its facilities as well as on structures and highway rights of way, as part of any future demonstration projects. The answer is yes. While the right-of-way model is the one of primary investigative interest, ODOT is interested in investigating other reasonable locations for siting solar panels on ODOT-owned properties. The Umatilla Port of Entry (POE) facility offers potential, both the buildings themselves and the surrounding sound wall. Responders should remember to identify innovative features in proposed financing, operating, owning and/or maintaining of the project.

Facts describing the Umatilla POE north side sound wall:

- The sound wall is 1,485 feet in length. According to plans, 1125 feet of it is 15' high, the remaining 360 feet is 12' high.
- There are two facilities located on the property; the main Operations building, where trucks are weighed and permits are issued, and the Truck Inspection building, located about 100 yards northeast of the Operations building. Both buildings run east - west and both rooflines face south. The Operations roofline is approximately 108 feet long while the Truck Inspection building roofline is 120 feet long.
- Power: The Operations building is supplied by PacifiCorp, while the Truck Inspection building is supplied by UEC (Umatilla Electrical Co-op) (see note below and Table 1).
- There are two truck stops directly across from the POE, the Crossroads Truck Stop and the Tesoro Truck Stop, as well as the Umatilla Post Office.
- Square footage of the Operations building is approximately 2,940 sq. ft. (98 x 30). The Truck Inspection building is approximately 6,340 sq. ft. (54 x 120 - 12 x 12); both are single story facilities.
- The entire property is approximately 4 acres.

Table 1 shows amount (dollars) and quantity (kwh) by month from July 2005 through July 2007. Some accounting errors exist in data prior to January 2007; Data from January 2007 forward is more accurate.

Table 1. Electrical Service Expenditures, Umatilla POE, July 2005 through July 2007

Process Date Year	Process Date Month	Transaction Amount	Transaction Qty kwh
2005	Jul	340.34	5,343.00
	Aug	598.97	9,207.00
	Sep	598.26	8,887.00
	Oct	294.11	3,654.00
	Nov	1,161.37	16,802.00
	Dec	370.75	6,224.00
2006	Jan	391.74	4,970.00
	Feb	1,097.54	16,549.00
	Mar	671.00	9,570.00
	Apr	645.85	9,529.00
	May	256.86	3,152.00
	Jun	1,217.73	17,978.00
	Jul	\$494	8,257.00
	Aug	\$1,001	14,526.00
	Sep	\$422	6,863.00
	Oct	\$677	9,830.00
	Nov	\$743	11,036.00
	Dec	\$815	11,847.00
2007	Jan	\$1,341	17,262.00
	Feb	\$106	5,655.00
	Mar	\$803	11,301.00
	Apr	\$679	9,561.00
	May	\$650	9,105.00
	Jun	\$729	10,425.00
	Jul	\$581	8,499.00
2006	Jul	\$9	6.00
2007	Jul	\$222	1,415.00
		\$16,917	247,453.00

Exhibit A – Pictures of Umatilla Port of Entry Sound Wall

Picture #1. Sound Wall looking East.



Picture #2. East end of Sound Wall



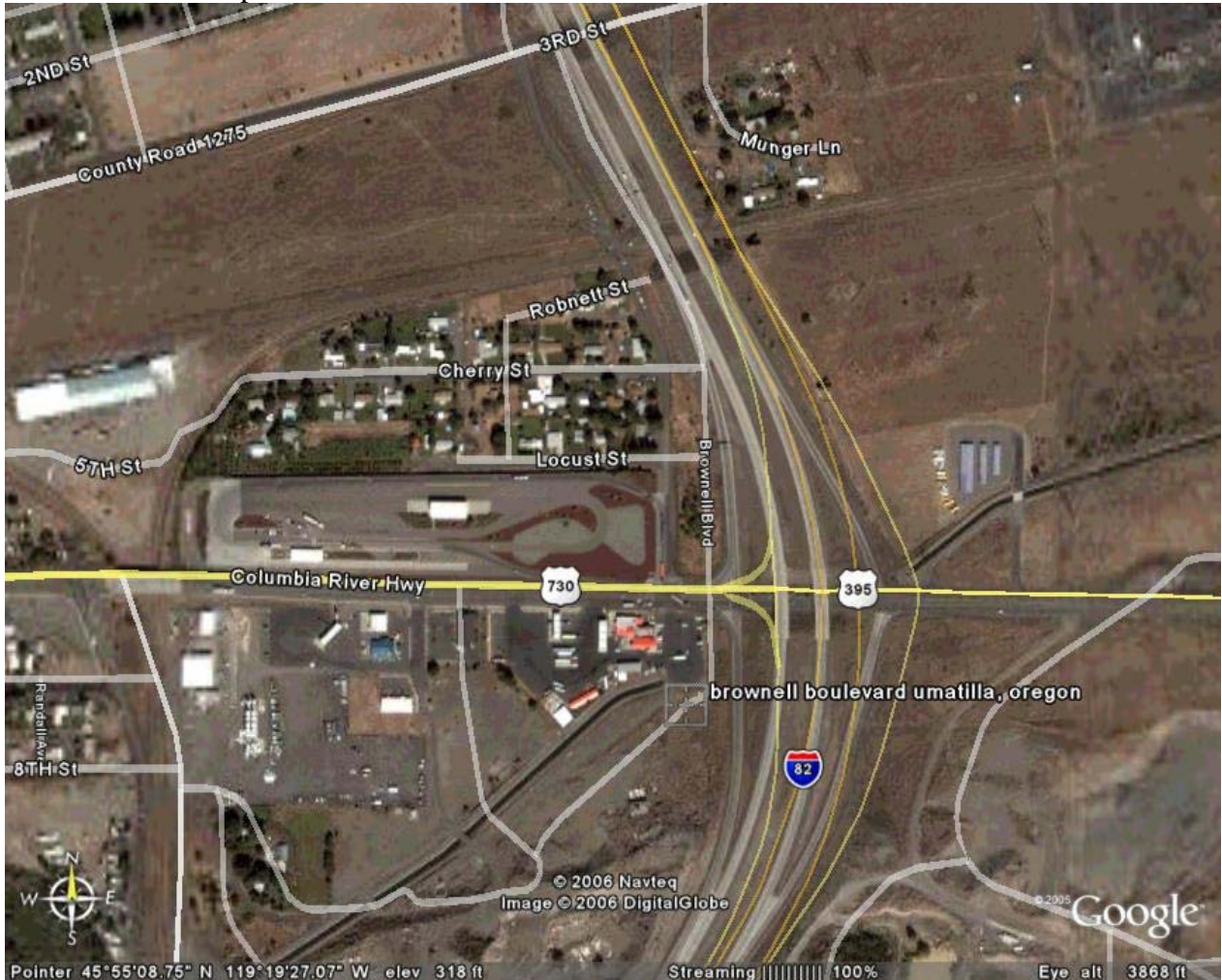
Picture #3. Sound wall looking West.



Picture #4. West end of sound wall.



Picture #5. Aerial photo of Umatilla POE.



END OF QUESTIONS AND ANSWERS #2

Interested parties are invited to submit any additional questions in writing by mail or email on or before September 15, 2007 to:

Allison Hamilton, Project Director
Oregon Innovative Partnerships Program
Oregon Department of Transportation
355 Capitol St NE, Room 115
Salem, OR 97301-3871

Email: Allison.M.HAMILTON@odot.state.or.us