

Appendix B: Oregon Demographic, Income and Road Use Data

This appendix provides additional statistical context to help policymakers understand and respond appropriately to Oregon trends in road finance and road use. The tables and figures relate to material presented in Chapter 2 of the Road User Fee Pilot Program Report to the 73rd Oregon Legislative Assembly (June 2005).

Table B1 simply presents the annual data from which these figures and many of the figures in Chapter 2 of the Road User Fee Pilot Program Report were drawn.

Oregon state population comes from Portland State University Population Research Center and the US Census Bureau. Per capita personal income was obtained from the Northwest Area Foundation Indicator Website (see sources identified in Figure B2). Oregon statewide vehicle miles traveled (VMT) and gasoline tax revenue data is provided by the Oregon Department of Transportation.

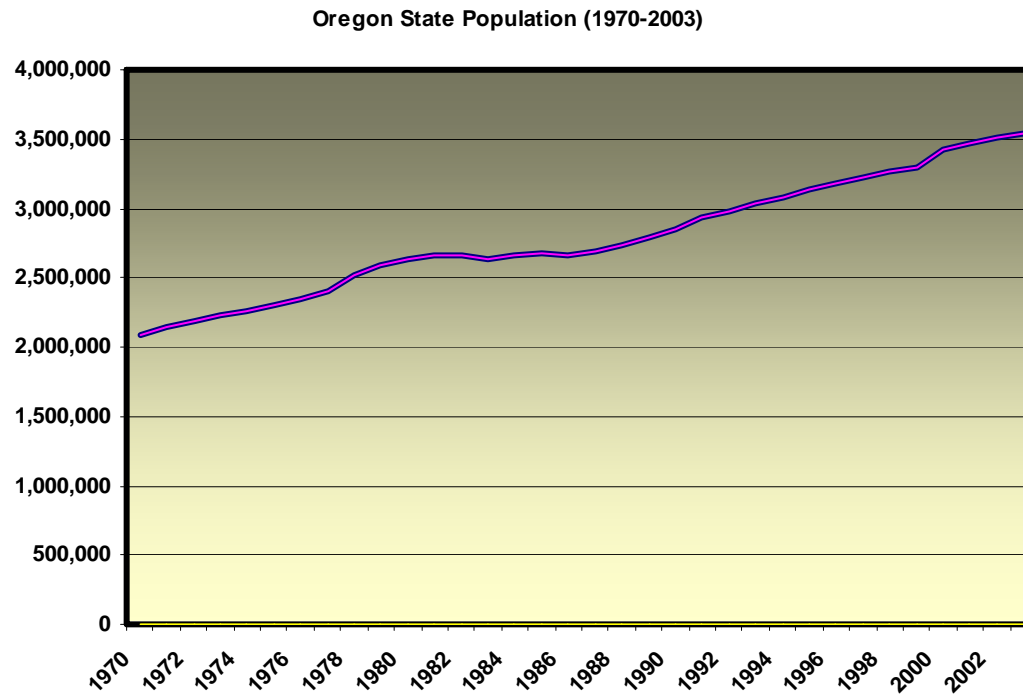
Figure B1 shows Oregon population growth from 1970 to 2003. Figures B2 and B3 show Oregon per capita personal income for the same period, in constant 2003 dollars (i.e., adjusted for inflation) and in current dollars (not adjusted for inflation), respectively.

Figure B4, Annual Percentage Change in Population, Per Capita Income and VMT (1970-2003), represents an attempt to pull a number of different data sets together and show the relationship between them by expressing each of them in terms of annual percentage changes from the previous year. Despite differences in magnitude caused thereby, the *profile* defined by the bars for each indicator reflect roughly the same set of interrelated economic circumstances. Like the other indicators, aggregate VMT has shown overall growth during the past three decades. Exceptions occur in 1973-74 (the Arab Oil Crisis), 1980 and 1982 (the trough of the Reagan Era Recession), and in the most recent economic downturn, percentage changes in VMT actually went negative in 2000 and 2002.

TABLE B1: OREGON DEMOGRAPHIC, INCOME, ROAD USE AND GASOLINE TAX REVENUE DATA

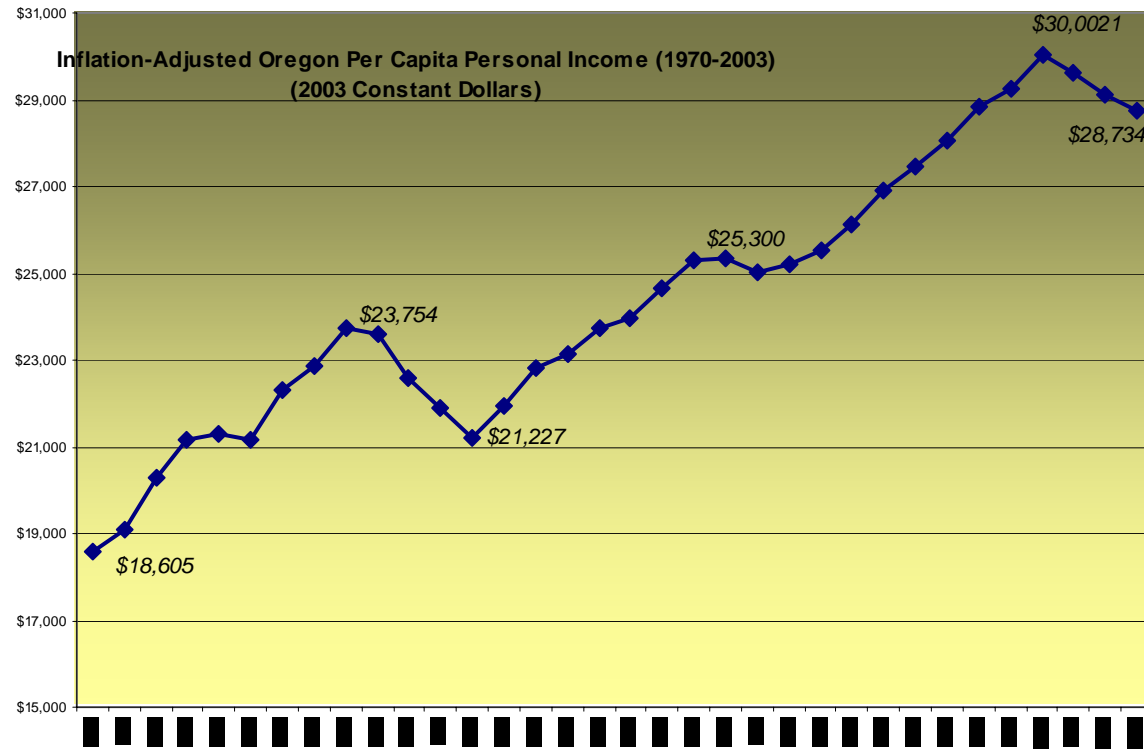
Year	Oregon State Population	REAL Per Capita Personal Income	Statewide Vehicle Miles Traveled (VMT) (in billions)	VMT Per Capita	Oregon State Gas Tax Revenues (\$M)	Cents/mile (constant 2002 dollars)	%change in population	%change in real per capita personal income (\$2003 Dollars)	%change in VMT	Per Capita VMT percent change
1970	2,091,533	\$18,606	11.553	5524	\$266.33	2.31				
1971	2,143,010	\$19,078	12.996	6064	\$280.87	2.16	2.46%	2.54%	12.49%	9.79%
1972	2,183,270	\$20,268	13.805	6323	\$291.91	2.11	1.88%	6.24%	6.23%	4.27%
1973	2,224,900	\$21,177	14.179	6373	\$289.78	2.04	1.91%	4.48%	2.71%	0.79%
1974	2,266,000	\$21,292	13.681	6037	\$246.73	1.80	1.85%	0.54%	-3.52%	-5.27%
1975	2,299,000	\$21,170	14.501	6307	\$238.90	1.65	1.46%	-0.57%	5.99%	4.47%
1976	2,341,750	\$22,325	15.847	6767	\$242.00	1.53	1.86%	5.46%	9.28%	7.29%
1977	2,396,100	\$22,870	17.298	7219	\$239.70	1.39	2.32%	2.44%	9.16%	6.69%
1978	2,521,850	\$23,754	18.838	7470	\$235.17	1.25	5.25%	3.87%	8.90%	3.47%
1979	2,584,350	\$23,591	19.059	7375	\$209.54	1.10	2.48%	-0.69%	1.18%	-1.27%
1980	2,633,156	\$22,584	17.797	6759	\$169.56	0.95	1.89%	-4.27%	-6.62%	-8.36%
1981	2,660,735	\$21,913	18.624	7000	\$157.83	0.85	1.05%	-2.97%	4.65%	3.56%
1982	2,656,185	\$21,228	18.167	6840	\$161.59	0.89	-0.17%	-3.13%	-2.45%	-2.29%
1983	2,635,000	\$21,927	19.337	7339	\$161.04	0.83	-0.80%	3.29%	6.44%	7.29%
1984	2,660,000	\$22,812	20.590	7741	\$177.63	0.86	0.95%	4.04%	6.48%	5.48%
1985	2,675,800	\$23,158	21.355	7981	\$191.13	0.89	0.59%	1.52%	3.72%	3.10%
1986	2,661,500	\$23,750	21.799	8191	\$208.47	0.96	-0.53%	2.56%	2.08%	2.63%
1987	2,690,000	\$23,986	22.349	8308	\$224.81	1.01	1.07%	0.99%	2.52%	1.44%
1988	2,741,000	\$24,652	23.151	8446	\$260.85	1.13	1.90%	2.78%	3.59%	1.66%
1989	2,791,000	\$25,300	24.085	8630	\$287.48	1.19	1.82%	2.63%	4.03%	2.17%
1990	2,842,321	\$25,355	25.110	8834	\$311.30	1.24	1.84%	0.22%	4.25%	2.37%
1991	2,930,000	\$25,030	25.162	8588	\$330.40	1.31	3.08%	-1.28%	0.21%	-2.79%
1992	2,979,000	\$25,226	25.877	8686	\$353.44	1.37	1.67%	0.79%	2.84%	1.15%
1993	3,038,000	\$25,527	26.130	8601	\$375.14	1.44	1.98%	1.19%	0.98%	-0.98%
1994	3,082,000	\$26,148	26.807	8698	\$398.53	1.49	1.45%	2.44%	2.59%	1.13%
1995	3,132,000	\$26,914	27.813	8880	\$395.09	1.42	1.62%	2.93%	3.75%	2.10%
1996	3,181,000	\$27,440	28.877	9078	\$396.05	1.37	1.56%	1.95%	3.83%	2.23%
1997	3,217,000	\$28,051	29.202	9078	\$389.42	1.33	1.13%	2.23%	1.13%	-0.01%
1998	3,267,550	\$28,832	30.298	9272	\$397.47	1.31	1.57%	2.78%	3.75%	2.15%
1999	3,300,800	\$29,247	30.866	9351	\$396.72	1.29	1.02%	1.44%	1.88%	0.85%
2000	3,421,399	\$30,021	30.665	8963	\$382.56	1.25	3.65%	2.65%	-0.65%	-4.16%
2001	3,471,700	\$29,612	30.991	8927	\$377.68	1.22	1.47%	-1.36%	1.06%	-0.40%
2002	3,504,700	\$29,113	30.915	8821	\$366.89	1.19	0.95%	-1.69%	-0.25%	-1.19%
2003	3,541,500	\$28,734	31.359	8855	\$362.69	1.16	1.05%	-1.30%	1.44%	0.38%
% Change 1970-2003	69.33%	54.43%	171.44%	60.31%	36.18%	50.17%				

Figure B1: Oregon Population Growth (1970 - 2003)



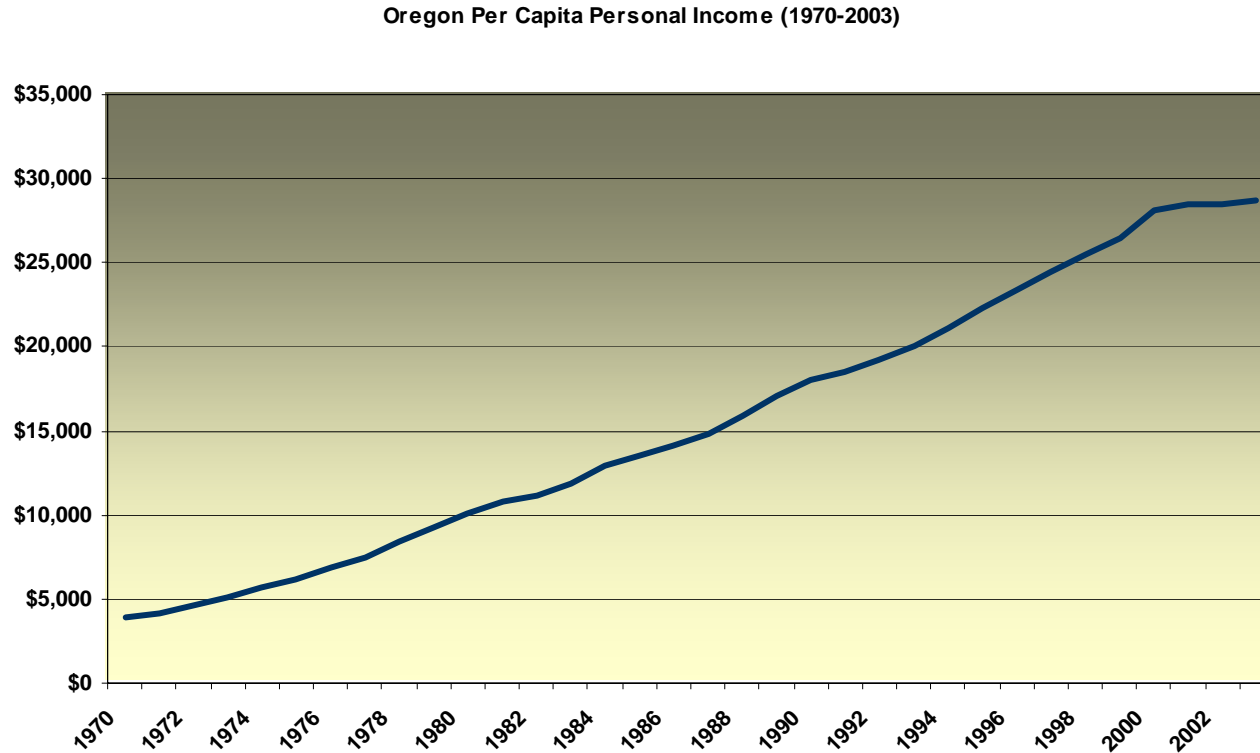
*Source: Oregon DOT Office of Innovative Partnerships and Alternative Funding (May 2005)
Population data from Portland State University Population Research Center. 1970, 1980, 1990 and 2000 data are from the US Census Bureau; remaining population numbers are taken from the Center's annual population report.*

Figure B2: Inflation-Adjusted Oregon Per Capita Personal Income (1970-2003) in Constant 2003 Dollars



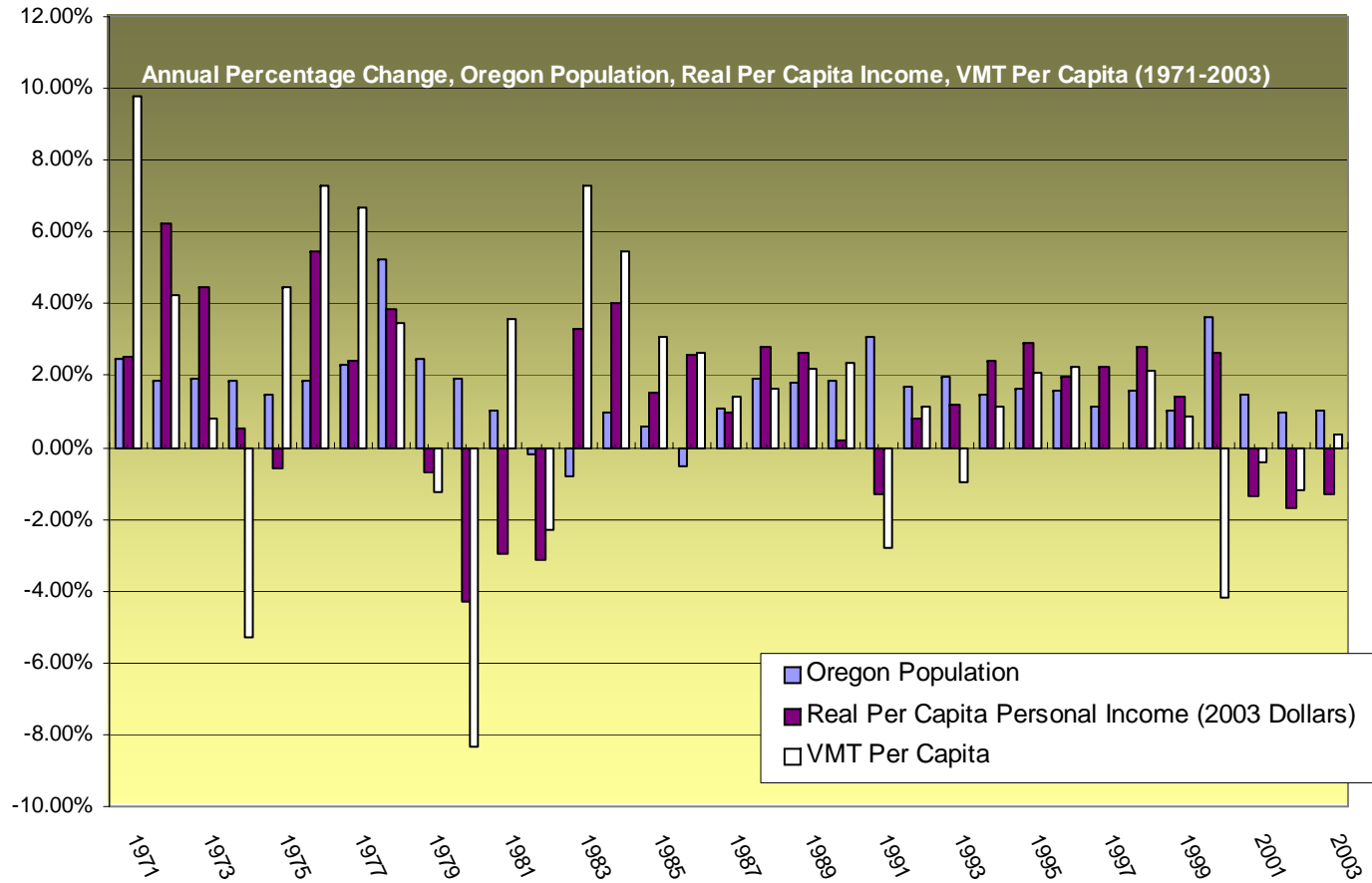
Source: Oregon DOT, May 2005; Data obtained electronically on May 15, 2005 from Northwest Area Foundation Indicator Website: <http://www.indicators.nwaf.org/DownloadIndicatorData>. Data Source: 1970-2003 Bureau of Economic Analysis, Regional Economic Data, Local Area Personal Income, Table CA1-3, <http://www.bea.gov/beat/regional/reis/> Adjusted dollar values by the CPI-U, which is the most commonly used CPI. Base year is 2003, meaning that all dollar values are expressed in terms of 2003 dollars.

**Figure B3: Oregon Per Capita Personal Income (1970-2003)
(Current Dollars, Not Adjusted for Inflation)**



Source: Oregon DOT Office of Innovative Partnerships and Alternative Funding (May 2005). Annual per capita personal income for Oregon 1970-2003 is from the website of the US Department of Commerce Bureau of Economic Analysis. State personal income tables can be found at <http://www.bea.doc.gov/bea/regional/spi/>

Figure B4: Annual Percentage Change in Oregon Population, Per Capita Income and VMT (1971-2003)



Source: Oregon DOT Office of Innovative Partnerships and Alternative Funding (May 2005)