

THIS MAP WAS PREPARED FOR ASSESSMENT PURPOSE ONLY.

NE1/4 SW1/4 SEC.11 T.27S. R.6W. W.M. DOUGLAS COUNTY

REVISED ON 5-1-07

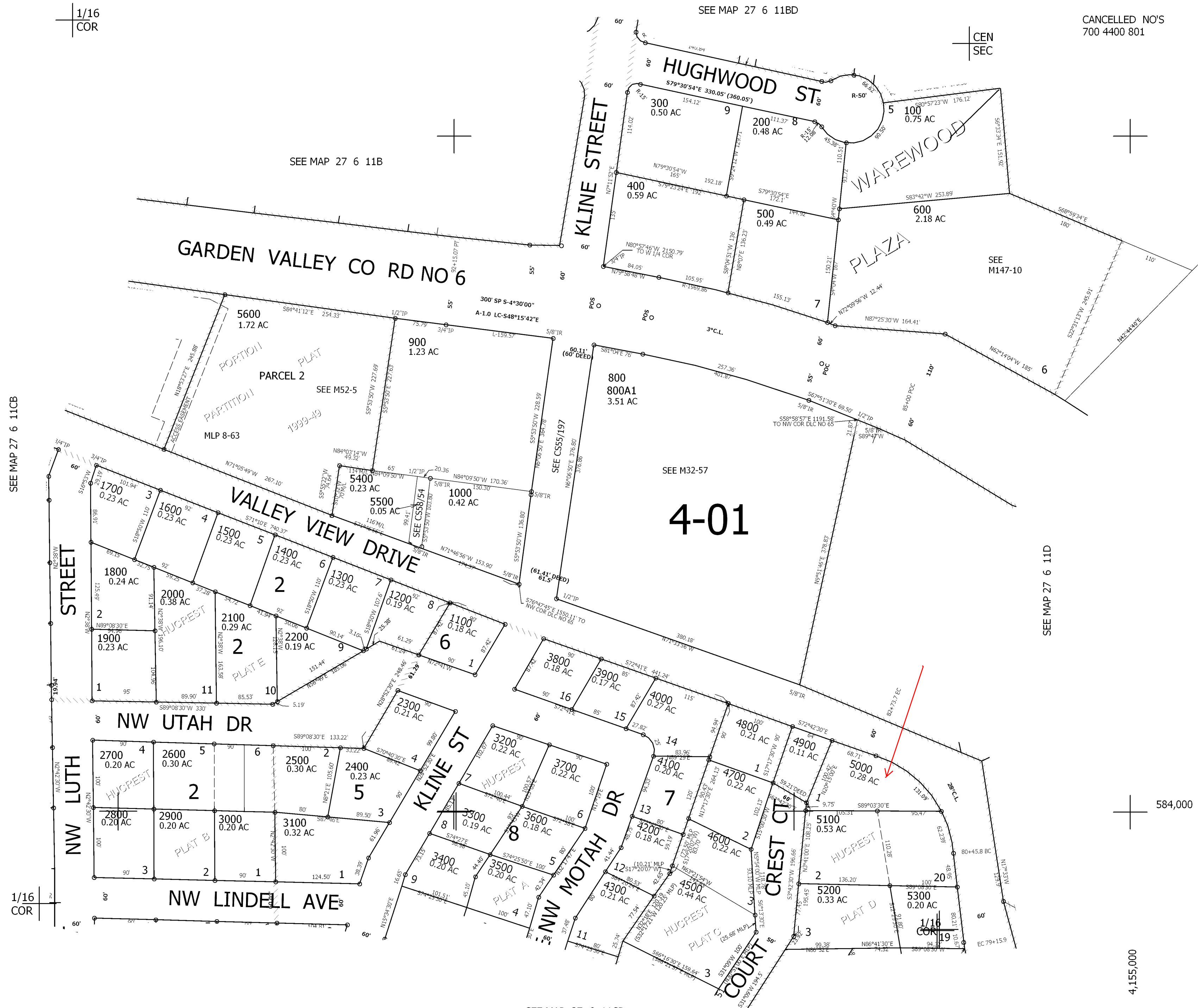
27 6 11CA ROSEBURG

1" = 100'

1/16 COR

CEN SEC

CANCELLED NO'S 700 4400 801



SEE MAP 27 6 11CB

SEE MAP 27 6 11D

1/16 COR

584,000

4,155,000

SEE MAP 27 6 11CD

27 6 11CA ROSEBURG