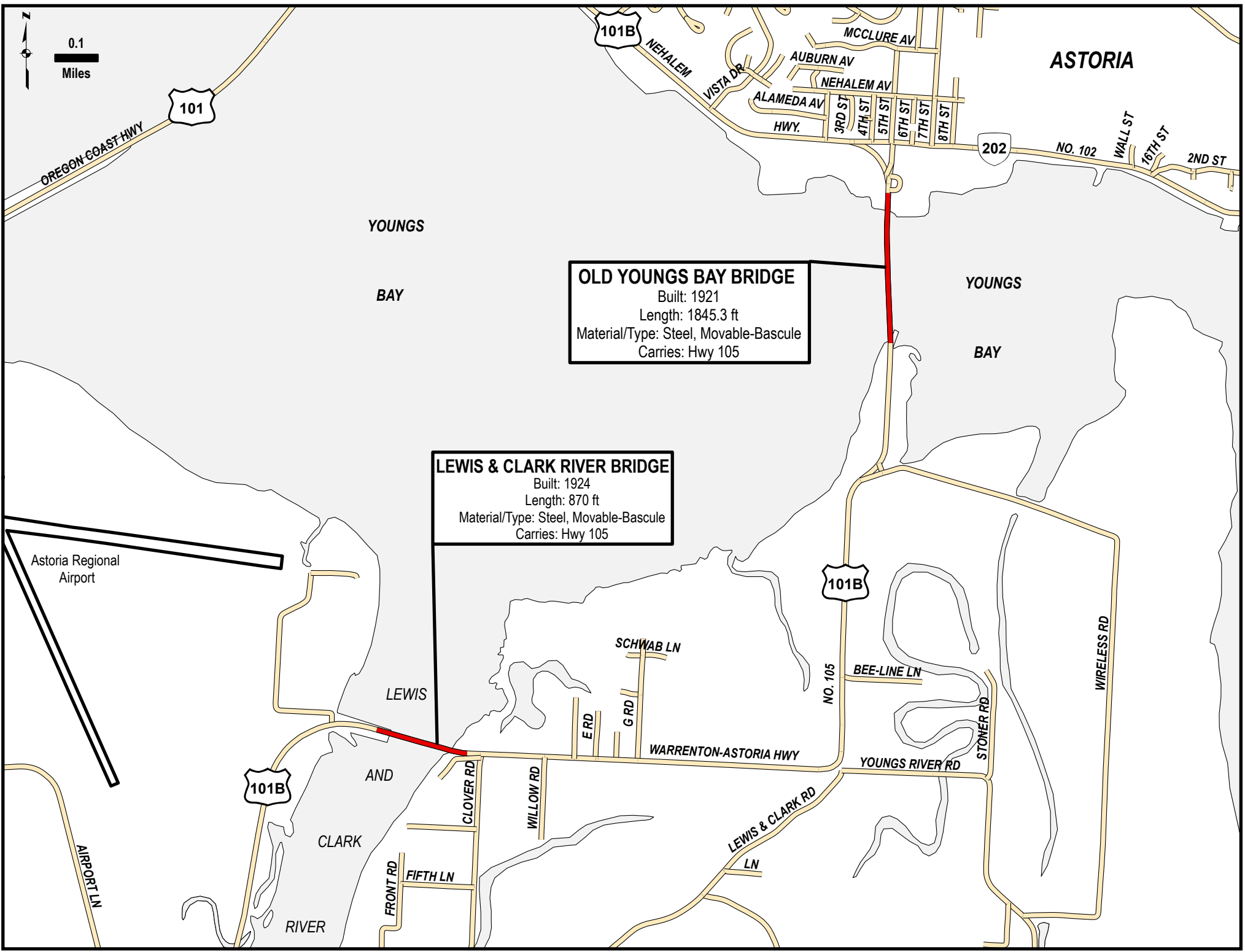


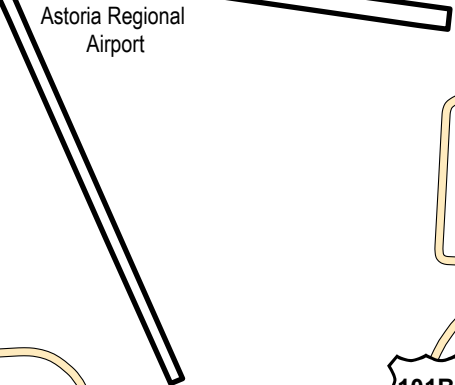


0.1
Miles



OLD YOUNGS BAY BRIDGE
Built: 1921
Length: 1845.3 ft
Material/Type: Steel, Movable-Bascule
Carries: Hwy 105

LEWIS & CLARK RIVER BRIDGE
Built: 1924
Length: 870 ft
Material/Type: Steel, Movable-Bascule
Carries: Hwy 105



Astoria Regional
Airport

ASTORIA

YOUNGS

BAY

YOUNGS

BAY

LEWIS

AND

CLARK

RIVER

101B

101

202

101B

101B

OREGON COAST HWY

NEHALEM

MCCLURE AV

AUBURN AV

NEHALEM AV

ALAMEDA AV

HWY.

3RD ST

4TH ST

5TH ST

6TH ST

7TH ST

8TH ST

NO. 102

WALL ST

16TH ST

2ND ST

SCHWAB LN

BEE-LINE LN

WIRELESS RD

NO. 105

ERD

G RD

WARRENTON-ASTORIA HWY

YOUNGS RIVER RD

STONER RD

WILLOW RD

CLOVER RD

FRONT RD

FIFTH LN

LEWIS & CLARK RD
LN

AIRPORT LN