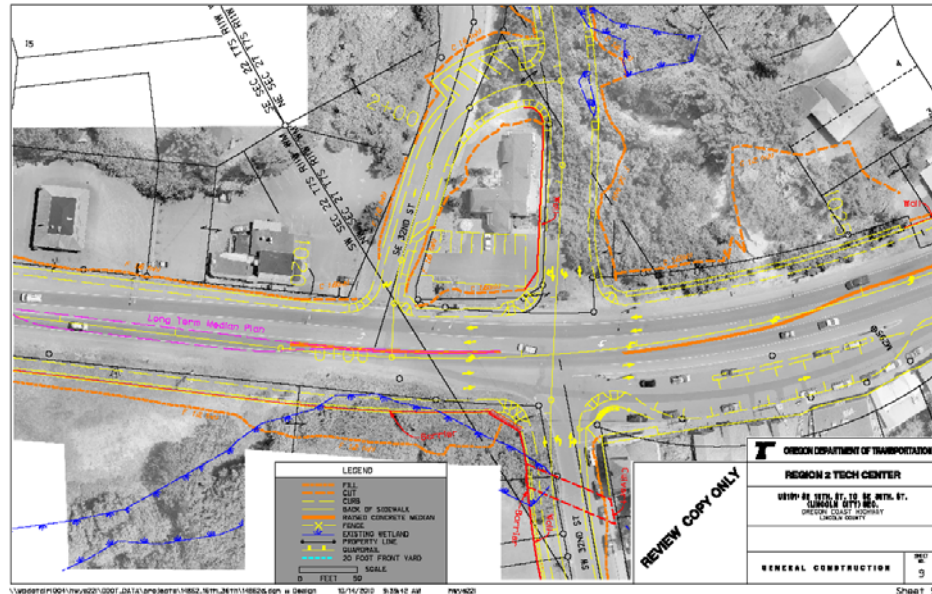


Facility Plan

What is the facility plan?

Shows a modern U.S. 101 between SW 12th Street and SE High School Drive: more travel lanes, bike lanes/shoulders, sidewalks and other components such as...



Proposes changes to the city comprehensive plan and zoning ordinance.

Why a facility plan?

There is not enough money to construct the entire project.

ODOT will need to construct Improvements to U.S. 101 in phases.

The highway is part of the National Highway System. ODOT and Lincoln City must show that the entire project can be built in order to get federal permission to build the project in phases.

A facility plan fulfills that federal requirement.

Who adopts the facility plan?

ODOT adopts the plan as part of the Oregon Highway Plan.

Are changes to the City's regulations proposed?

Yes. Lincoln City needs to adopt provisions into its comprehensive plan and into Lincoln City Code Title 17 (the Zoning Ordinance). Some of the provisions are expected to become part of the Lincoln City Transportation Master (System) Plan when it is adopted.

When does all this need to happen?

Soon. Funding for transportation facilities has become very limited.

Projects must be ready for construction when scheduled or funding may be moved to another project in Oregon.

The scheduled construction period for a phase of this project in 2013.

What happens if the facility plan is not adopted?

The only allowable highway construction project would be a 5-lane highway project beginning at SW 12th Street.

Funding could be redirected to another project in Oregon.

Once the facility plan is in place how will it help?

ODOT will implement the plan when highway approach road permits are issued and by constructing highway projects.

Lincoln City will be implementing the plan so that property development occurs in a manner compatible with the future highway facilities.